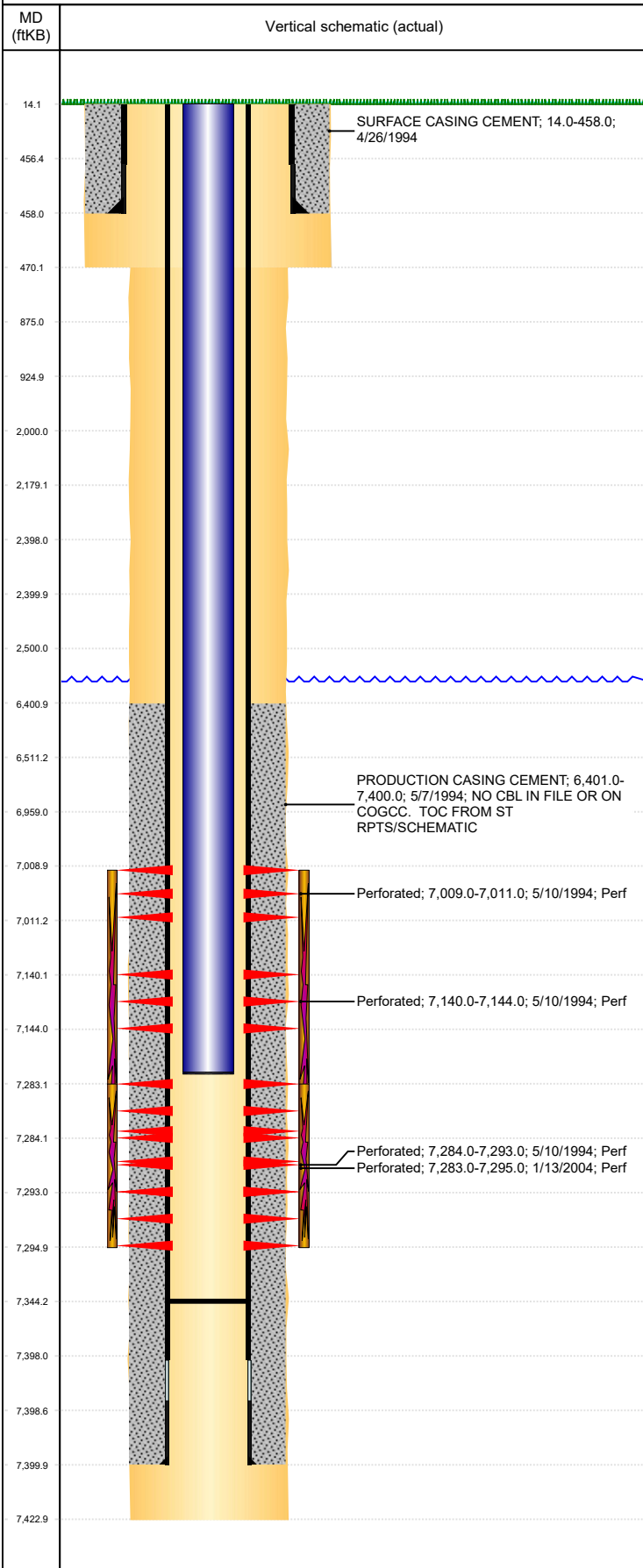


**Well Name: SEVERIN 04-13G6**

VERTICAL - ORIGINAL HOLE, 10/23/2018 11:08:03 AM



Well Header									
API 05-123-18234		Business Unit DJ BASIN			District 15		Well Config VERTICAL		
KB - GL / MSL (ft... 14.00		Spud Date 4/25/1994		P & A Date		Well Production Status PR			SoRT No
Comment NO FRAC DETAIL FOR ORIG HOLE									
NO CBL IN FILE OR ON COGCC. TOC FROM ST RPTS/SCHEMATIC									
Surface Location (Congressional)									
Qtr 3 SW	Qtr 4 SW	Section 4	Twnshp 6	Twنش... N	Range 66	Rng E/... W	Actual Latitude (°) 40.51117350	Actual Longitude (°) -104.79030922	
Wellbore Sections									
Section Des			Size (in)			Act Top, MD (ftKB)		Act Btm, MD (ftKB)	
SURFACE			9 7/8			14		470	
PRODUCTION			6 1/4			470		7,423	
Casing Strings									
Csg Des		Run Date		OD (in)	Wt/Len (lb/ft)	Grade	Top, MD (ftKB)	MD (ftKB)	
Surface		4/26/1994		7	17.00	H-40	14.0	458.0	
Production		5/7/1994		3 1/2	7.70	?	14.0	7,400.0	
Cement									
Des				Start Date		Top (ftKB)		Btm (ftKB)	
SURFACE CASING CEMENT				4/26/1994		14.0		458.0	
PRODUCTION CASING CEMENT				5/7/1994		6,401.0		7,400.0	
Zone Statuses									
Zone Name	Status Date	Status	Fluid Type	Job				Prod Method	
CODELL	6/8/1994	PR		DRILLING/COMPLETION - ORIGINAL, 4/25/1994...					
CODELL	3/1/2004	PR		RE-FRAC, 1/10/2004 00:00					
NIOBRARA	6/8/1994	PR		DRILLING/COMPLETION - ORIGINAL, 4/25/1994...					
Perforation Data									
Linked Zone		Bnch/Stg	Entered Shot Total	Top (ftKB)		Btm (ftKB)		Date	
NIOBRARA, ORIGINAL HOLE			2	7,009.00		7,011.00		5/10/1994	
NIOBRARA, ORIGINAL HOLE			4	7,140.00		7,144.00		5/10/1994	
CODELL, ORIGINAL HOLE			48	7,283.00		7,295.00		1/13/2004	
CODELL, ORIGINAL HOLE			9	7,284.00		7,293.00		5/10/1994	
Stimulation Intervals									
Zone				Start Date		Top (ftKB)		Btm (ftKB)	
NIOBRARA-CODELL, ORIGINAL HOLE				5/13/1994		7,009.0		7,293.0	
CODELL, ORIGINAL HOLE				1/15/2004		7,283.0		7,295.0	
Other In Hole									
Run Date		Des				OD (in)	Top (ftKB)	Btm (ftKB)	
Logs									
Date		Type				Top, MD (ftKB)		Btm, MD (ftKB)	
5/7/1994		INDUCTION				470.0		7,414.0	
5/10/1994		GAMMA RAY				6,750.0		7,368.0	
Plug Back Total Depths									
Date		Type		Com				Depth (ftKB)	
1/13/2004		FILL		LAST CLEANOUT - NO TAG OF FILL BEFORE LANDING TBG...				7,359.0	
12/11/2014		FILL		CLEANOUT BEFORE LANDING TBG				7,344.0	