

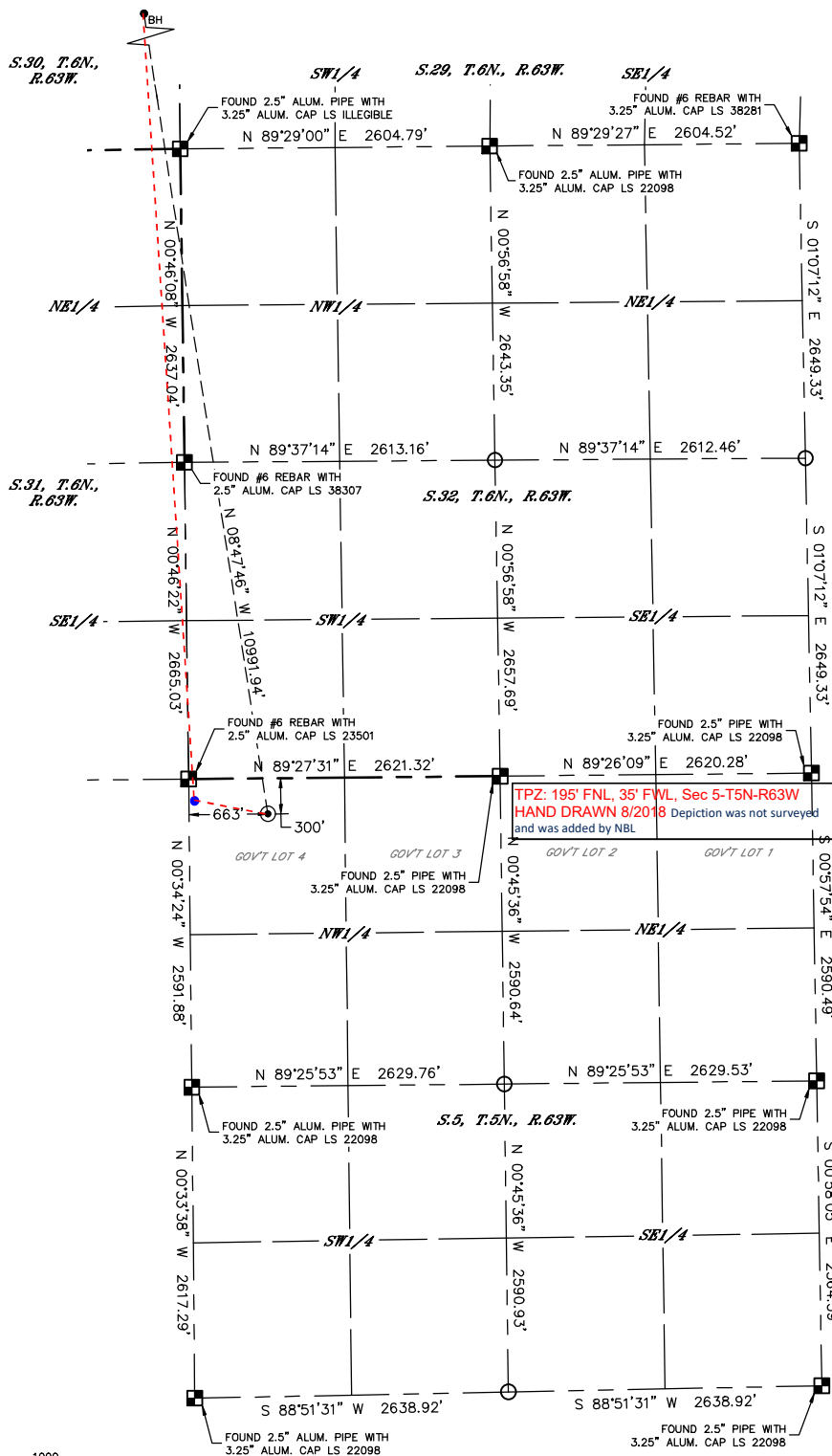


Lat40°, Inc. 6250 W. 10th Street, Unit 2, Greeley, CO 970-515-5294

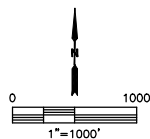
# WELL LOCATION CERTIFICATE

WELLS RANCH STATE AA32-789

SECTION: 5  
TOWNSHIP: 5N  
RANGE: 63W  
6TH. P.M.  
WELD COUNTY, CO



**APPROVED**  
By Cory at 11:08 am, Aug 31, 2018



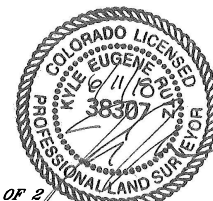
CLIENT: NOBLE ENERGY, INC.				LANDMAN: GREG WILSON			
INSTRUMENT OPERATOR: JAKE STILLE				SURVEY DATE: 11/07/2017			
				SURFACE USE: RANGELAND			
SHL FOOTAGE	SHL LAT°	SHL LONG°	SHL PDOP	SHL ELEV (FT.)	SHL 1/4/1/4	SHL S-T-R	
300 FNL 663 FWL	40.43489	-104.46783	2.8	4672	NWNW	5-5-63	

BHL FOOTAGE	BHL LAT°	BHL LONG°	BHL S-T-R
0 FNL 890 FEL	40.46476	-104.47341	30-6-63

- LEGEND
- = ALIQUOT MONUMENT AS DESCRIBED
  - = CALCULATED POSITION
  - = SURFACE HOLE LOCATION (SHL)
  - ▲ = ENTRY POINT LOCATION (EP)
  - = BOTTOM HOLE LOCATION (BHL)
  - ⊙ = EXISTING WELL
  - ⊙ = ABANDONED WELL

NOTE:

- Bearings shown are Grid Bearings of the Colorado State Plane Coordinate System, North Zone, North American Datum 1983. The lineal dimensions as contained herein are based upon the "U.S. Survey Foot."
- Distances to section lines measured at 90 degrees from said section lines.
- Ground elevations are based on an observed GPS elevation (NAVD 1988 DATUM).
- Latitude and Longitude shown are (NAD 83 DATUM).
- IMPROVEMENTS: See LOCATION DRAWING for all visible improvements within 500' of oil and gas location.
- This map does not represent a boundary survey.

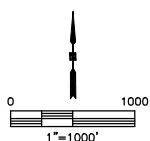
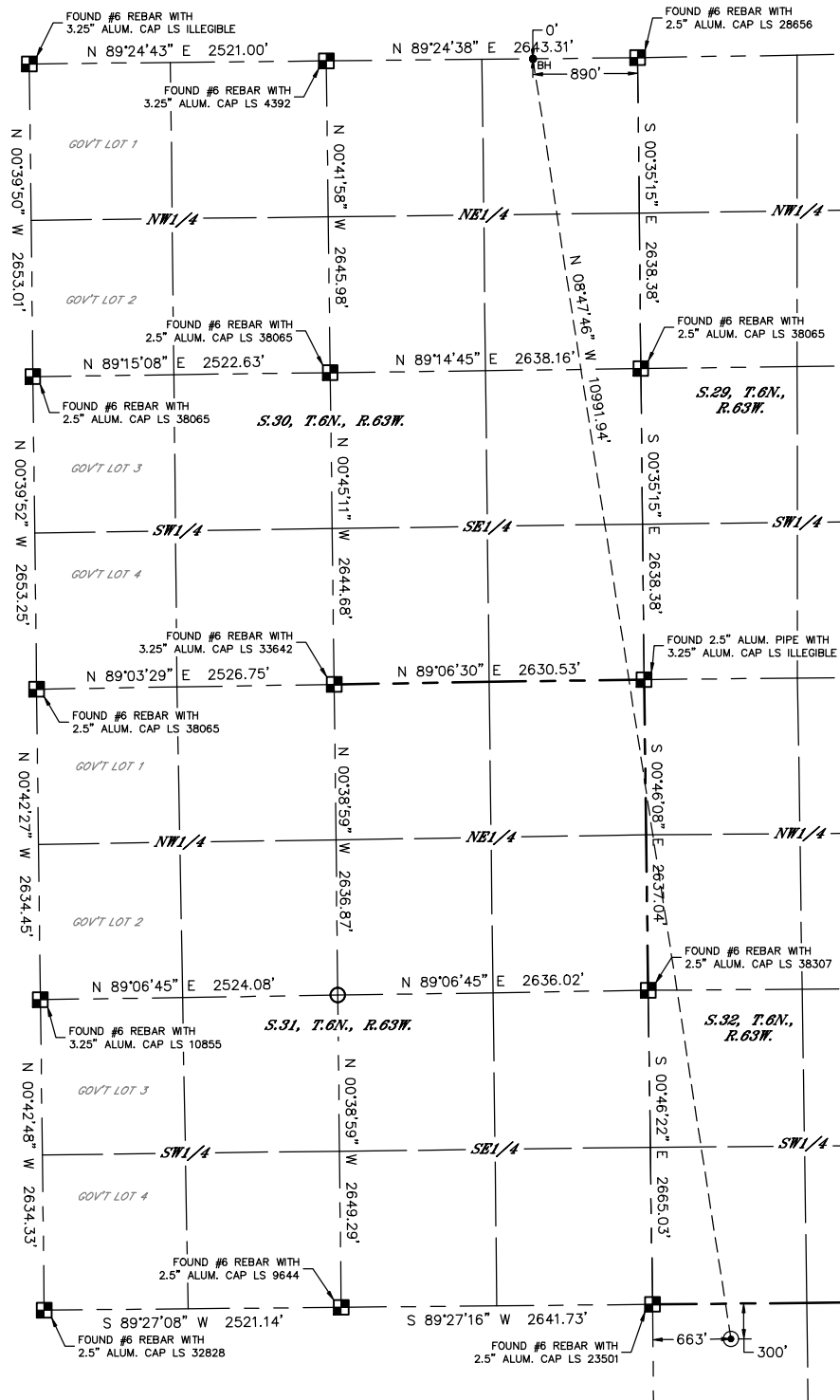


**SHEET 1 OF 2**  
Kyle E. Rutz—On behalf of Lat40°, Inc.  
Colorado Licensed Professional Surveyor No. 38307  
DATE: 6/11/2018  
PROJECT#: 2017094

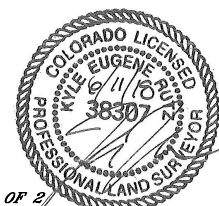


**WELL LOCATION CERTIFICATE**  
**WELLS RANCH STATE AA32-789**

SECTION: 5  
TOWNSHIP: 5N  
RANGE: 63W  
6TH. P.M.  
WELD COUNTY, CO



- LEGEND
- = ALIQUOT MONUMENT AS DESCRIBED
  - = CALCULATED POSITION
  - ⊙ = SURFACE HOLE LOCATION (SHL)
  - ▲ = ENTRY POINT LOCATION (EP)
  - = BOTTOM HOLE LOCATION (BHL)
  - ⊕ = EXISTING WELL
  - ⊖ = ABANDONED WELL



**SHEET 2 OF 2**

Kyle E. Rutz—On behalf of Lat40°, Inc.  
Colorado Licensed Professional Land Surveyor No. 38307  
DATE: 6/11/2018  
PROJECT#: 2017094