

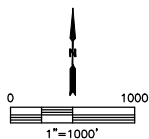
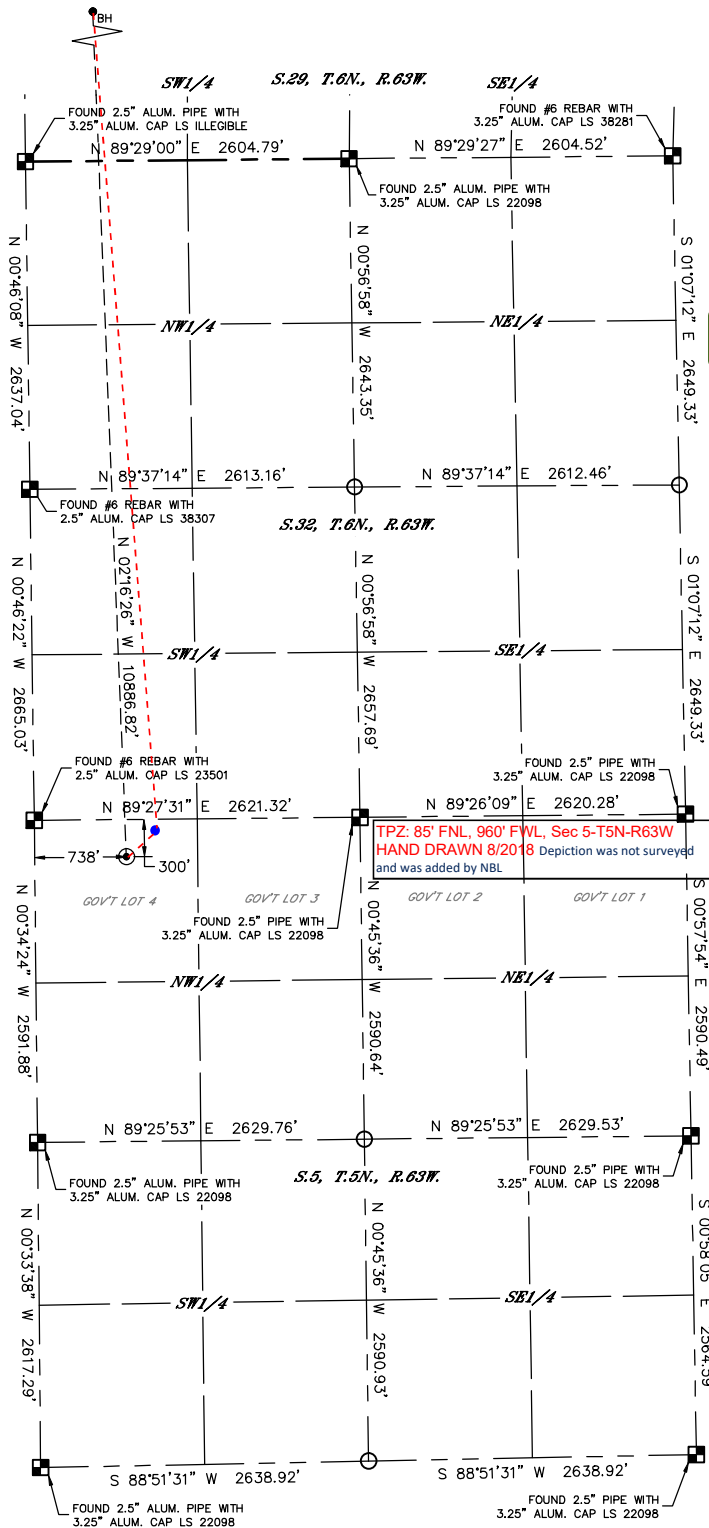


Lat40°, Inc. 6250 W. 10th Street, Unit 2, Greeley, CO 970-515-5294

WELL LOCATION CERTIFICATE

WELLS RANCH STATE AA32-775

SECTION: 5
TOWNSHIP: 5N
RANGE: 63W
6TH. P.M.
WELD COUNTY, CO



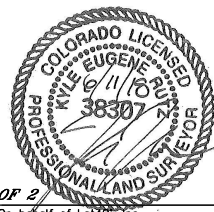
CLIENT: NOBLE ENERGY, INC.				LANDMAN: GREG WILSON			
INSTRUMENT OPERATOR: JAKE STILLE				SURVEY DATE: 11/07/2017			
SURFACE USE: RANGELAND				SURFACE USE: RANGELAND			
SHL FOOTAGE	SHL LAT°	SHL LONG°	SHL PDOP	SHL ELEV (FT.)	SHL 1/4/1/4	SHL S-T-R	
300	FNL	738	FWL	40.43489	-104.46756	2.8	4674

BHL FOOTAGE	BHL LAT°	BHL LONG°	BHL S-T-R
0	FNL	434	FWL
40.46476	-104.46865	29-6-63	

- LEGEND
- ALLOTMENT MONUMENT AS DESCRIBED
 - CALCULATED POSITION
 - SURFACE HOLE LOCATION (SHL)
 - ENTRY POINT LOCATION (EP)
 - BOTTOM HOLE LOCATION (BHL)
 - EXISTING WELL
 - ABANDONED WELL

NOTE:

- Bearings shown are Grid Bearings of the Colorado State Plane Coordinate System, North Zone, North American Datum 1983. The lineal dimensions as contained herein are based upon the "U.S. Survey Foot."
- Distances to section lines measured at 90 degrees from said section lines.
- Ground elevations are based on an observed GPS elevation (NAVD 1988 DATUM).
- Latitude and Longitude shown are (NAD 83 DATUM).
- IMPROVEMENTS: See LOCATION DRAWING for all visible improvements within 500' of oil and gas location.
- This map does not represent a boundary survey.

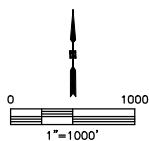
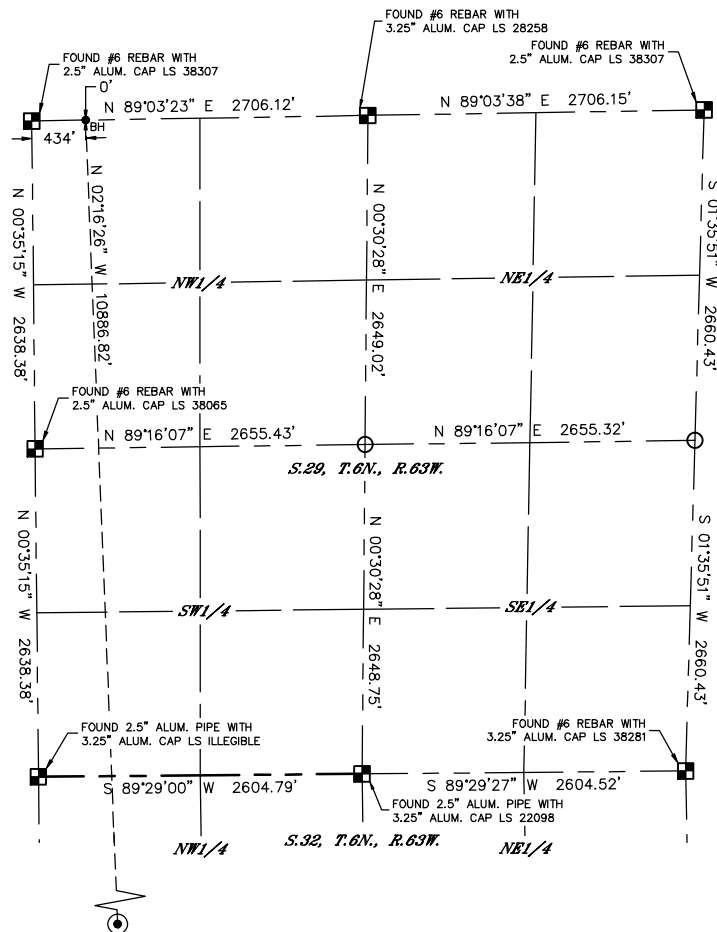


SHEET 1 OF 2
Kyle E. Rutz—On behalf of Lat40°, Inc.
Colorado Licensed Professional Surveyor No. 38307
DATE: 6/11/2018
PROJECT#: 2017094



WELL LOCATION CERTIFICATE
WELLS RANCH STATE AA32-775

SECTION: 5
TOWNSHIP: 5N
RANGE: 63W
6TH. P.M.
WELD COUNTY, CO



- LEGEND
- = ALIQUOT MONUMENT AS DESCRIBED
 - = CALCULATED POSITION
 - ⊙ = SURFACE HOLE LOCATION (SHL)
 - ▲ = ENTRY POINT LOCATION (EP)
 - = BOTTOM HOLE LOCATION (BHL)
 - ⊙ = EXISTING WELL
 - ⊙ = ABANDONED WELL

