



Kerr-McGee Oil & Gas Onshore LP

A subsidiary of Anadarko Petroleum Corporation

1099 18th Street
Denver, CO 80202
720-929-6000

October 8, 2018

Julie Murphy
Director, Colorado Oil and Gas Conservation Commission
Department of Natural Resources - The Chancery Building
1120 Lincoln Street, Suite 801
Denver, CO 80203

Re: **30 Day Certification Letter - 318A.e**
RANGER 7-19HZ (Doc No. 401718949)
Township 1 North, Range 67 West
Section 7: NENW
Unit Acreage: 800 Acres
Proposed Spacing Unit:
02N67W: SEC 30: SESW, SWSE;
02N67W: SEC 31: E2W2, W2E2;
01N67W: SEC 06: E2W2, W2E2;
01N67W: SEC 07: NENW, NWNE
Weld County, Colorado

Dear Director Murphy:

Kerr-McGee Oil and Gas Onshore LP ("KMG") hereby certifies that a thirty (30) day notice has been given by certified mail to all mineral owners in the proposed wellbore spacing unit. We have not received any objections to this spacing unit or location. KMG hereby respectfully requests approval of this well.

If you have any questions or issues regarding this permit, please contact me at (720) 929-6092.

Sincerely,

Kerr-McGee Oil and Gas Onshore LP

A blue ink signature of Craig Richardson, consisting of a stylized 'C' followed by a horizontal line.

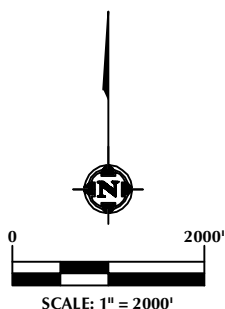
Craig Richardson
Regulatory Analyst II

Enclosure

DISTANCE FROM COMPLETED
PORTION OF WELLBORE TO
NEAREST UNIT BOUNDARY= 1270'

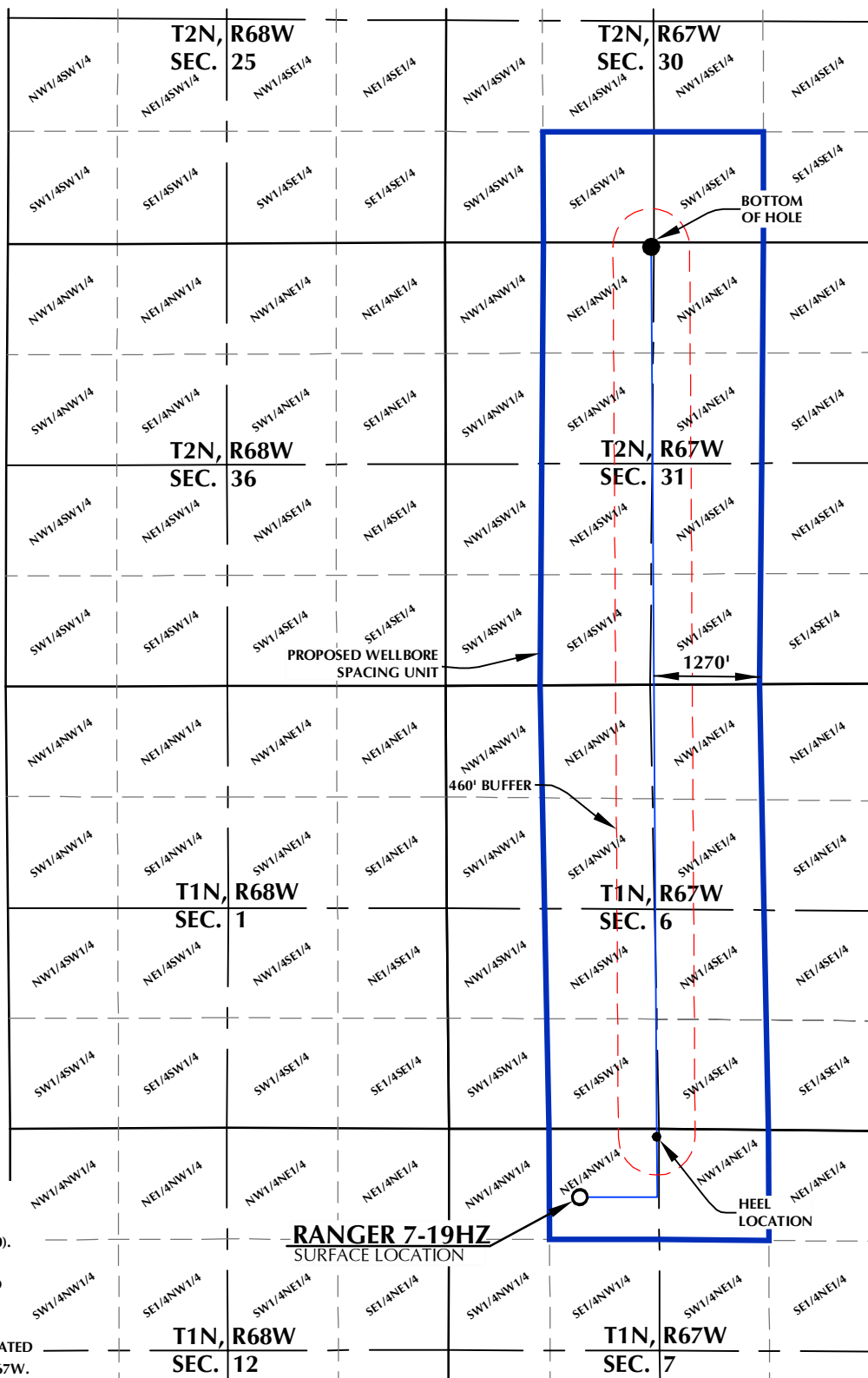
RANGER 7-19HZ WELLBORE SPACING UNIT

SURFACE LOCATION: NAD 83
GROUND ELEVATION= 5112.3'
LATITUDE= 40.070788°
LONGITUDE= -104.936710°
LATITUDE= 40°04'14.838"
LONGITUDE= -104°56'12.156"
HEEL LOCATION: NAD 83
LATITUDE= 40.072758°
LONGITUDE= -104.933398°
LATITUDE= 40°04'21.930"
LONGITUDE= -104°56'00.234"
BOTTOM HOLE LOCATION: NAD 83
LATITUDE= 40.102068°
LONGITUDE= -104.933383°
LATITUDE= 40°06'07.445"
LONGITUDE= -104°56'00.179"



NOTES:

1. DRAWING LATITUDE AND LONGITUDE COORDINATES ARE NAD 83 (2011)(EPOCH:2010).
 2. ELEVATION BASED ON NAVD88 (GEOID12B).
 3. BASIS OF BEARING DERIVED FROM COLORADO COORDINATE SYSTEM OF 1983 NORTH ZONE.
 4. ALL MEASURED DISTANCES ARE GRID.
- COMBINED SCALE FACTOR: .99972179 CALCULATED FROM THE SW. CORNER OF SECTION 6, T1N, R67W.



WELL PAD - RANGER 18-7HZ

RANGER 7-19HZ
WELLBORE SPACING UNIT
825' FNL & 1574' FWL LOT 1 (NENW) (SURFACE)
100' FNL & 2496' FWL LOT 1 (NENW) (HEEL)
LOCATED IN SECTION 7
T1N, R67W, 6TH P.M.
51' FNL & 2474' FWL LOT 1 (NENW) (BOTTOM)
LOCATED IN SECTION 31
T2N, R67W, 6TH P.M.
WELD COUNTY, COLORADO

**Kerr-McGee Oil &
Gas Onshore L.P.**
1099 18th Street
Denver, Colorado 80202



CONSULTING, LLC

SHERIDAN OFFICE
1095 Saberton Avenue
Sheridan, Wyoming 82801
Phone 307-674-0609

LOVELAND OFFICE
6706 North Franklin Avenue
Loveland, Colorado 80538
Phone 970-776-4331

DRAFTED BY:	LMO	CHECKED BY:	RKF
DATE DRAFTED:	6/7/18	DATE SURVEYED:	5/7/18
REVISED:		FILE NAME:	16-183