





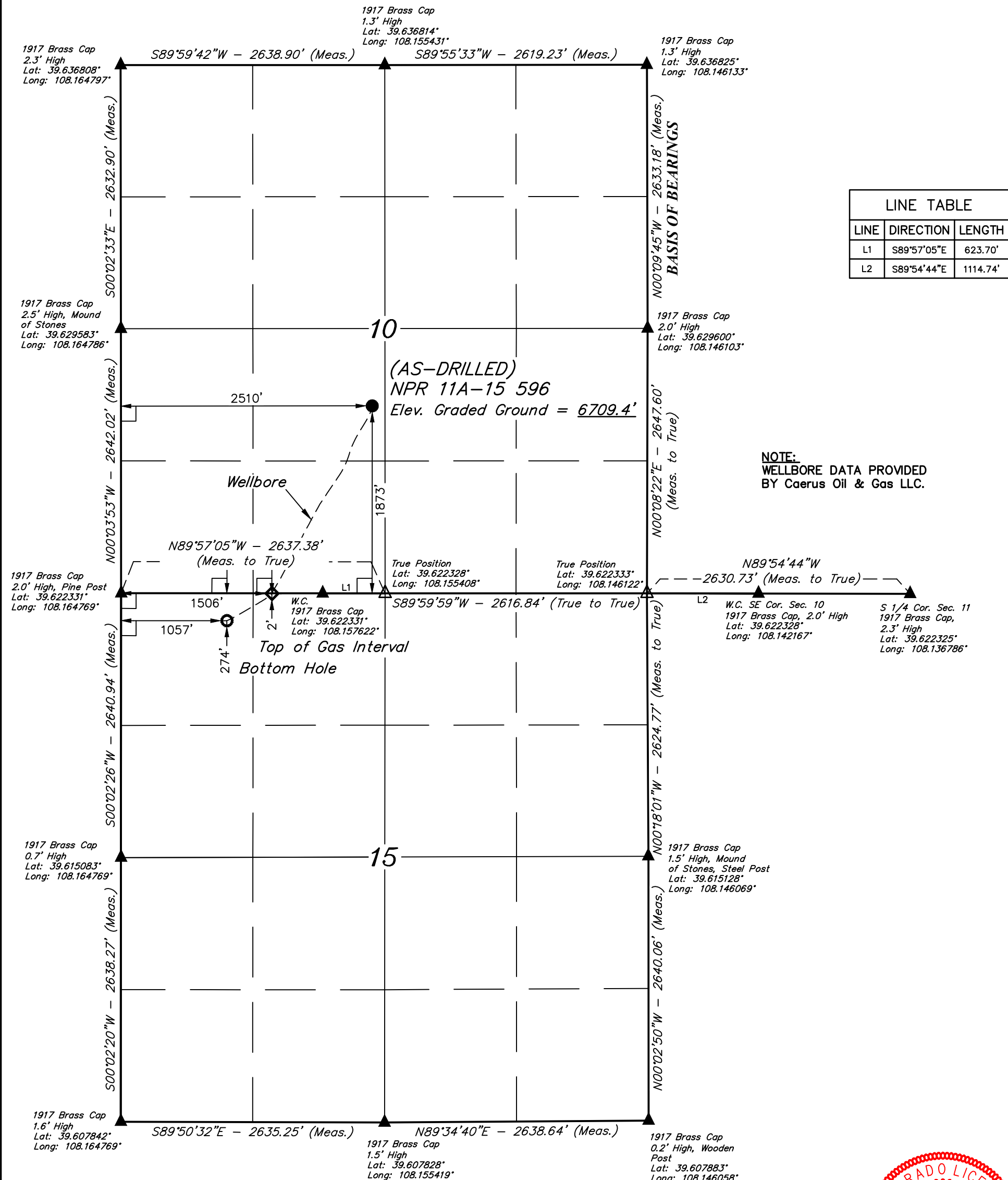


*T5S, R96W, 6th P.M.*

-  = 90° SYMBOL  
 = AS-DRILLED WELLHEAD.  
 = TOP OF GAS INTERVAL  
 = BOTTOM HOLE.  
 = SECTION CORNERS  
 LOCATED. (NAD 83)  
 = SECTION CORNERS  
 RE-ESTABLISHED.  
 (Not Set on Ground.)  
 (NAD 83)



# CERTIFICAT

THIS IS TO CERTIFY THAT THE ABOVE PLAN WAS PREPARED AND  
LOCATION AS SHOWN WAS STAKED ON THE GROUND FROM FIELD NOTES  
OF ACTUAL SURVEYS MADE BY ME OR UNDER MY SUPERVISION AND THAT  
THE SAME ARE TRUE AND CORRECT TO THE BEST OF MY KNOWLEDGE AND  
BELIEF.

REGISTERED LAND SURVEYOR  
REGISTRATION NO. 38130  
STATE OF COLORADO

STATE OF COLORADO 10-12-18

<b>NAD 83 (AS-DRILLED LOCATION)</b>	<b>NAD 83 (TOP OF GAS INTERVAL)</b>	<b>NAD 83 (BOTTOM HOLE)</b>
LATITUDE = 39°37'38.89" (39.627470)	LATITUDE = 39°37'20.37" (39.622325)	LATITUDE = 39°37'17.69" (39.621579)
LONGITUDE = 108°09'21.13" (108.155870)	LONGITUDE = 108°09'33.92" (108.159423)	LONGITUDE = 108°09'39.67" (108.161019)
<b>NAD 27 (AS-DRILLED LOCATION)</b>	<b>NAD 27 (TOP OF GAS INTERVAL)</b>	<b>NAD 27 (BOTTOM HOLE)</b>
LATITUDE = 39°37'38.98" (39.627494)	LATITUDE = 39°37'20.45" (39.622349)	LATITUDE = 39°37'17.77" (39.621603)
LONGITUDE = 108°09'18.84" (108.155234)	LONGITUDE = 108°09'31.63" (108.158786)	LONGITUDE = 108°09'37.38" (108.160382)
<b>UTM NAD 27 (ZONE 12)</b>	<b>UTM NAD 27 (ZONE 12)</b>	<b>UTM NAD 27 (ZONE 12)</b>
N: 14403096.20 E: 2441491.02	N: 14401190.57 E: 2440549.92	N: 14400904.82 E: 2440108.96

## BASIS OF BEARINGS

BEARINGS ARE A BASED ASSUMPTION THAT THE EAST LINE OF THE  
NORTHEAST 1/4 OF SECTION 10 BEARS N00°09'45"W. MONUMENTS DESCRIBED HERON.

## BASIS OF ELEVATION

SPOT ELEVATION AT THE NORTHWEST CORNER OF SECTION 30, T5S, R95W, 6th P.M., TAKEN FROM THE FORKED GULCH QUADRANGLE, GARFIELD COUNTY, COLORADO, 7.5 MINUTE QUAD. (TOPOGRAPHIC MAP) PUBLISHED BY THE UNITED STATES DEPARTMENT OF THE INTERIOR, GEOLOGICAL SURVEY. SAID ELEVATION IS MARKED AS BEING 5966 FEET.



**UELS, LLC**  
**Corporate Office \* 85 South 200 East**  
**Vernal, UT 84078 \* (435) 789-1017**

**Caerus Oil & Gas LLC**

**(AS-DRILLED) NPR 11A-15 596**  
**NE 1/4 SW 1/4, SECTION 10, T5S, R96W, 6th P.M.**  
**GARFIELD COUNTY, COLORADO**

<b>SURVEYED BY</b>	DAYTON SLAUGH	10-12-18	<b>SCALE</b>
<b>DRAWN BY</b>	M.D.	10-12-18	1" = 1000'

# AS-DRILLED WELL LOCATION PLAT