





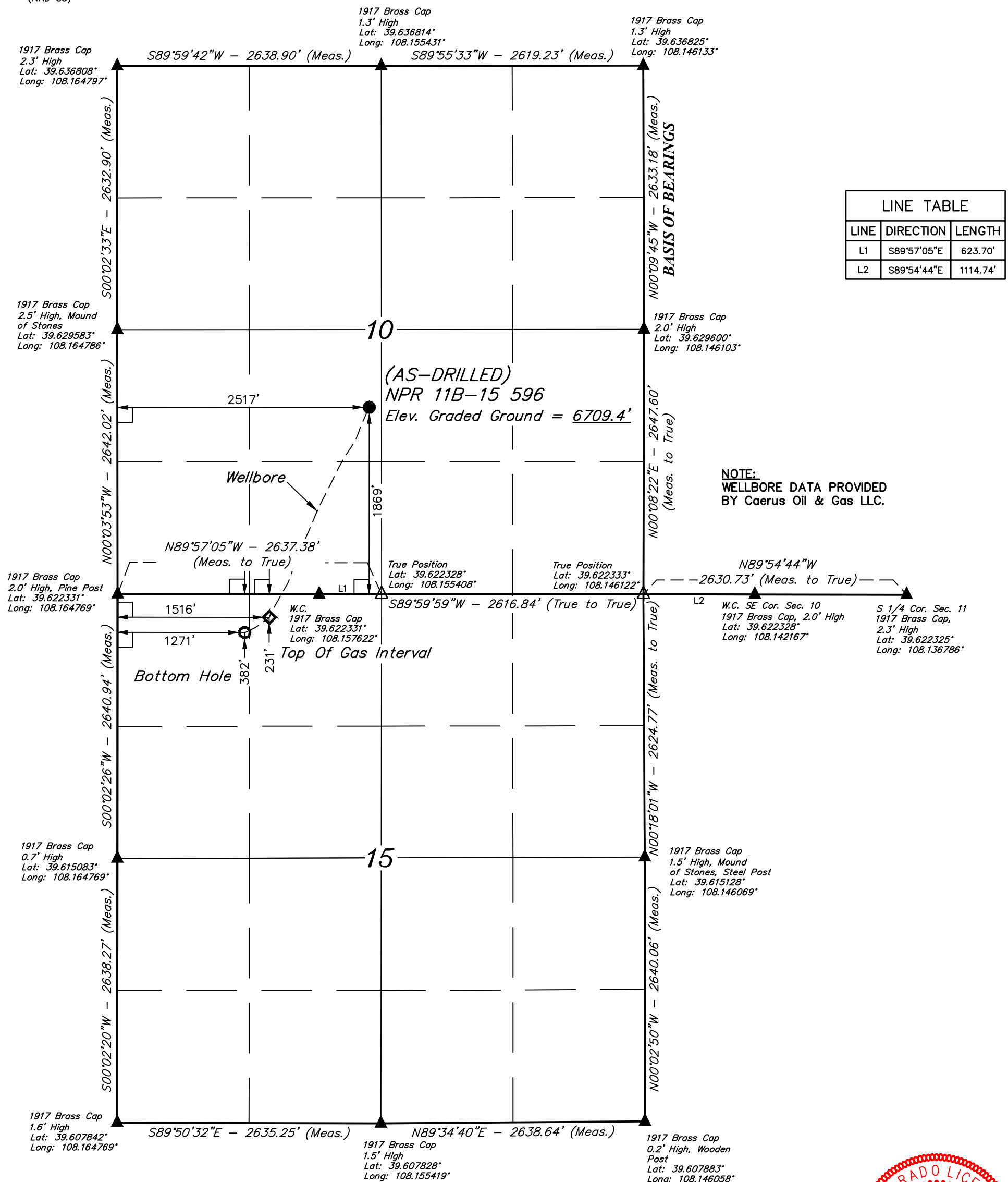


T5S, R96W, 6th P.M.

-  = 90° SYMBOL
 = AS-DRILLED WELLHEAD.
 = TOP OF GAS INTERVAL
 = BOTTOM HOLE.
 = SECTION CORNERS
 LOCATED. (NAD 83)
 = SECTION CORNERS
 RE-ESTABLISHED.
 (Not Set on Ground.)
 (NAD 83)



PDOP = 5.6

NAD 83 (AS-DRILLED LOCATION)	NAD 83 (TOP OF GAS INTERVAL)	NAD 83 (BOTTOM HOLE)
LATITUDE = 39°37'38.85" (39.627459)	LATITUDE = 39°37'18.11" (39.621697)	LATITUDE = 39°37'16.61" (39.621281)
LONGITUDE = 108°09'21.06" (108.155849)	LONGITUDE = 108°09'33.80" (108.159389)	LONGITUDE = 108°09'36.94" (108.160260)
NAD 27 (AS-DRILLED LOCATION)	NAD 27 (TOP OF GAS INTERVAL)	NAD 27 (BOTTOM HOLE)
LATITUDE = 39°37'38.94" (39.627483)	LATITUDE = 39°37'18.20" (39.621721)	LATITUDE = 39°37'16.70" (39.621305)
LONGITUDE = 108°09'18.77" (108.155213)	LONGITUDE = 108°09'31.51" (108.158753)	LONGITUDE = 108°09'34.65" (108.159624)
UTM NAD 27 (ZONE 12)	UTM NAD 27 (ZONE 12)	UTM NAD 27 (ZONE 12)
N: 14403092.36 E: 2441497.27	N: 14400962.35 E: 2440566.57	N: 14400802.87 E: 2440326.12

CERTIFICATE

THE ABOVE PLAT WAS PREPARED AND
STAKED ON THE GROUND FROM FIELD NOTES
GIVEN BY ME OR UNDER MY SUPERVISION AND THAT
IT IS CORRECT TO THE BEST OF MY KNOWLEDGE AND
BELIEF.

Harold Marshall

REGISTERED LAND SURVEYOR
REGISTRATION NO. 19160
STATE OF COLORADO

10-15-18

BASIS OF BEARINGS

BEARINGS ARE A BASED ASSUMPTION THAT THE EAST LINE OF THE
NORTHEAST 1/4 OF SECTION 10 BEARS N00°09'45"W. MONUMENTS DESCRIBED HERON.

BASIS OF ELEVATION

SPOT ELEVATION AT THE NORTHWEST CORNER OF SECTION 30, T5S, R95W, 6th P.M., TAKEN FROM THE FORKED GULCH QUADRANGLE, GARFIELD COUNTY, COLORADO, 7.5 MINUTE QUAD. (TOPOGRAPHIC MAP) PUBLISHED BY THE UNITED STATES DEPARTMENT OF THE INTERIOR, GEOLOGICAL SURVEY. SAID ELEVATION IS MARKED AS BEING 5966 FEET.

UELS, LLC

**Corporate Office * 85 South 200 East
Vernal, UT 84078 * (435) 789-1017**

**Caerus Oil & Gas LLC**

(AS-DRILLED) NPR 11B-15 596
NE 1/4 SW 1/4, SECTION 10, T5S, R96W, 6th P.M.
GARFIELD COUNTY, COLORADO

SURVEYED BY	DAYTON SLAUGH	10-12-18	SCALE
DRAWN BY	M.D.	10-12-18	1" = 1000'

AS-DRILLED WELL LOCATION PLAT