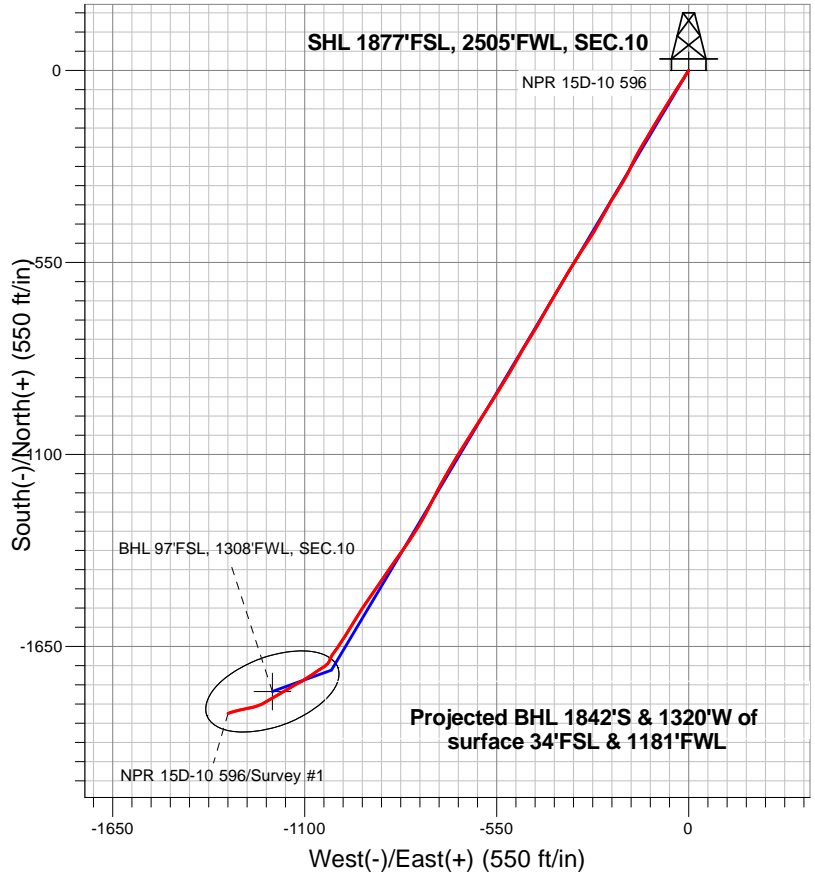


## Caerus Oil and Gas LLC



### LEGEND

- ◆ NPR 15D-10 596, NPR 15D-10 596 Wellbore #1, Plan #1 (3-8-18) V0
- NPR 15D-10 596 Wellbore #1
- Survey #1

## Final Survey Plot

**Projected Final Survey -**  
**9,706'MD & 9,335' TVD @ 2264.81'VS**  
**4.5 deg Inc 249.8 deg AZ**

Project: SEC.10-T5S-R96W  
 Site: K10 596 Pad Sec.10-T5S-R96W  
 Well: NPR 15D-10 596  
 Plan: NPR 15D-10 596 Wellbore #1



## **Caerus Oil and Gas LLC**

**SEC.10-T5S-R96W**

**K10 596 Pad Sec.10-T5S-R96W**

**NPR 15D-10 596**

**NPR 15D-10 596 Wellbore #1**

**Survey: Survey #1**

## **Standard Survey Report**

**14 March, 2018**

<b>Company:</b>	Caerus Oil and Gas LLC	<b>Local Co-ordinate Reference:</b>	Well NPR 15D-10 596
<b>Project:</b>	SEC.10-T5S-R96W	<b>TVD Reference:</b>	WELL @ 6733.0ft (Original Well Elev)
<b>Site:</b>	K10 596 Pad Sec.10-T5S-R96W	<b>MD Reference:</b>	WELL @ 6733.0ft (Original Well Elev)
<b>Well:</b>	NPR 15D-10 596	<b>North Reference:</b>	True
<b>Wellbore:</b>	NPR 15D-10 596 Wellbore #1	<b>Survey Calculation Method:</b>	Minimum Curvature
<b>Design:</b>	NPR 15D-10 596 Wellbore #1	<b>Database:</b>	US_EDM

<b>Project</b>	SEC.10-T5S-R96W, Garfield County, CO		
<b>Map System:</b>	Universal Transverse Mercator (US Survey Feet)	<b>System Datum:</b>	Mean Sea Level
<b>Geo Datum:</b>	NAD 1927 - Western US		Using Well Reference Point
<b>Map Zone:</b>	Zone 12N (114 W to 108 W)		Using geodetic scale factor

Site		K10 596 Pad Sec.10-T5S-R96W			
Site Position:		Northing:	14,403,140.13 usft	Latitude:	39.627619
From:	Lat/Long	Easting:	2,441,439.81 usft	Longitude:	-108.155411
Position Uncertainty:	0.0 ft	Slot Radius:	13-3/16 "	Grid Convergence:	1.82 °

<b>Well</b>	NPR 15D-10 596				
<b>Well Position</b>	<b>+N/-S</b>	0.0 ft	<b>Northing:</b>	14,403,100.36 usft	<b>Latitude:</b> 39.627506
	<b>+E/-W</b>	0.0 ft	<b>Easting:</b>	2,441,484.77 usft	<b>Longitude:</b> -108.155256
<b>Position Uncertainty</b>		0.0 ft	<b>Wellhead Elevation:</b>	0.0 ft	<b>Ground Level:</b> 6,709.0 ft

Wellbore		NPR 15D-10 596 Wellbore #1			
Magnetics	Model Name	Sample Date	Declination (°)	Dip Angle (°)	Field Strength (nT)
	IGRF2010	3/8/2018	9.57	65.63	51,617

<b>Design</b>	NPR 15D-10 596 Wellbore #1				
<b>Audit Notes:</b>					
<b>Version:</b>	1.0	<b>Phase:</b>	ACTUAL	<b>Tie On Depth:</b>	0.0
<b>Vertical Section:</b>	<b>Depth From (TVD) (ft)</b>	<b>+N/-S (ft)</b>	<b>+E/-W (ft)</b>	<b>Direction (°)</b>	
	0.0	0.0	0.0	215.62	

Survey Program		Date	3/14/2018		
From (ft)	To (ft)	Survey (Wellbore)	Tool Name	Description	
130.0	9,706.0	Survey #1 (NPR 15D-10 596 Wellbore #1)	MWD	MWD - Standard	

Survey										
	Measured Depth (ft)	Inclination (°)	Azimuth (°)	Vertical Depth (ft)	+N/-S (ft)	+E/-W (ft)	Vertical Section (ft)	Dogleg Rate (°/100usft)	Build Rate (°/100usft)	Turn Rate (°/100usft)
	0.0	0.00	0.00	0.0	0.0	0.0	0.0	0.00	0.00	0.00
	130.0	0.00	0.00	130.0	0.0	0.0	0.0	0.00	0.00	0.00
	386.0	5.80	211.70	385.6	-11.0	-6.8	12.9	2.27	2.27	0.00
	477.0	8.70	214.30	475.8	-20.6	-13.1	24.4	3.21	3.19	2.86
	570.0	9.80	213.30	567.6	-33.0	-21.4	39.3	1.20	1.18	-1.08
	665.0	11.60	212.90	661.0	-47.8	-31.0	56.9	1.90	1.89	-0.42
	760.0	12.00	209.90	754.0	-64.4	-41.1	76.3	0.77	0.42	-3.16
	854.0	13.10	213.60	845.7	-81.7	-51.9	96.7	1.45	1.17	3.94
949.0	13.40	212.50	938.2	-100.0	-63.8	118.4	0.41	0.32	-1.16	
1,044.0	14.80	210.50	1,030.3	-119.7	-75.9	141.5	1.56	1.47	-2.11	

<b>Company:</b>	Caerus Oil and Gas LLC	<b>Local Co-ordinate Reference:</b>	Well NPR 15D-10 596
<b>Project:</b>	SEC.10-T5S-R96W	<b>TVD Reference:</b>	WELL @ 6733.0ft (Original Well Elev)
<b>Site:</b>	K10 596 Pad Sec.10-T5S-R96W	<b>MD Reference:</b>	WELL @ 6733.0ft (Original Well Elev)
<b>Well:</b>	NPR 15D-10 596	<b>North Reference:</b>	True
<b>Wellbore:</b>	NPR 15D-10 596 Wellbore #1	<b>Survey Calculation Method:</b>	Minimum Curvature
<b>Design:</b>	NPR 15D-10 596 Wellbore #1	<b>Database:</b>	US_EDM

Survey									
Measured Depth (ft)	Inclination (°)	Azimuth (°)	Vertical Depth (ft)	+N/-S (ft)	+E/-W (ft)	Vertical Section (ft)	Dogleg Rate (°/100usft)	Build Rate (°/100usft)	Turn Rate (°/100usft)
1,138.0	16.30	211.00	1,120.9	-141.4	-88.7	166.6	1.60	1.60	0.53
1,233.0	16.60	210.70	1,212.0	-164.5	-102.5	193.4	0.33	0.32	-0.32
1,327.0	17.90	210.70	1,301.8	-188.5	-116.8	221.2	1.38	1.38	0.00
1,421.0	21.00	211.10	1,390.4	-215.3	-132.9	252.4	3.30	3.30	0.43
1,516.0	21.80	207.50	1,478.8	-245.5	-149.8	286.8	1.62	0.84	-3.79
1,611.0	22.00	206.10	1,567.0	-277.2	-165.8	321.8	0.59	0.21	-1.47
1,705.0	22.20	208.80	1,654.1	-308.5	-182.1	356.8	1.10	0.21	2.87
1,800.0	22.20	212.50	1,742.0	-339.4	-200.4	392.6	1.47	0.00	3.89
1,894.0	20.70	211.20	1,829.5	-368.6	-218.5	426.9	1.67	-1.60	-1.38
1,950.0	19.70	209.70	1,882.1	-385.2	-228.3	446.1	2.01	-1.79	-2.68
2,126.0	17.20	208.80	2,049.0	-433.8	-255.5	501.5	1.43	-1.42	-0.51
2,220.0	18.00	210.50	2,138.6	-458.5	-269.6	529.8	1.01	0.85	1.81
2,315.0	19.20	212.40	2,228.7	-484.4	-285.4	560.0	1.41	1.26	2.00
2,409.0	20.30	212.90	2,317.1	-511.1	-302.6	591.7	1.18	1.17	0.53
2,504.0	21.40	211.80	2,405.9	-539.7	-320.7	625.5	1.23	1.16	-1.16
2,599.0	22.50	212.30	2,494.0	-569.8	-339.5	660.9	1.17	1.16	0.53
2,693.0	23.20	211.60	2,580.6	-600.7	-358.8	697.3	0.80	0.74	-0.74
2,788.0	24.20	208.70	2,667.6	-633.8	-378.0	735.3	1.62	1.05	-3.05
2,882.0	24.80	209.30	2,753.2	-667.8	-396.9	774.0	0.69	0.64	0.64
2,976.0	24.90	209.70	2,838.5	-702.2	-416.3	813.3	0.21	0.11	0.43
3,071.0	24.60	211.50	2,924.7	-736.5	-436.6	852.9	0.85	-0.32	1.89
3,166.0	23.40	211.60	3,011.5	-769.4	-456.8	891.5	1.26	-1.26	0.11
3,260.0	22.80	210.80	3,098.0	-800.9	-475.9	928.2	0.72	-0.64	-0.85
3,355.0	24.00	209.90	3,185.2	-833.5	-495.0	965.8	1.32	1.26	-0.95
3,450.0	25.00	210.30	3,271.6	-867.6	-514.7	1,005.0	1.07	1.05	0.42
3,544.0	25.30	211.00	3,356.7	-901.9	-535.1	1,044.8	0.45	0.32	0.74
3,638.0	24.60	211.60	3,441.9	-935.8	-555.7	1,084.4	0.79	-0.74	0.64
3,733.0	24.80	212.40	3,528.2	-969.5	-576.7	1,124.0	0.41	0.21	0.84
3,828.0	24.70	212.80	3,614.5	-1,003.0	-598.1	1,163.7	0.21	-0.11	0.42
3,922.0	23.80	213.80	3,700.2	-1,035.3	-619.3	1,202.3	1.05	-0.96	1.06
4,017.0	23.80	212.70	3,787.1	-1,067.3	-640.3	1,240.6	0.47	0.00	-1.16
4,111.0	23.60	210.70	3,873.2	-1,099.5	-660.2	1,278.3	0.88	-0.21	-2.13
4,206.0	23.80	210.30	3,960.2	-1,132.4	-679.6	1,316.3	0.27	0.21	-0.42
4,300.0	24.70	209.20	4,045.9	-1,165.9	-698.7	1,354.7	1.07	0.96	-1.17
4,395.0	23.60	208.00	4,132.6	-1,200.0	-717.3	1,393.3	1.27	-1.16	-1.26
4,489.0	21.80	206.60	4,219.3	-1,232.2	-734.0	1,429.2	2.00	-1.91	-1.49
4,584.0	20.90	206.70	4,307.8	-1,263.1	-749.5	1,463.3	0.95	-0.95	0.11
4,679.0	21.90	210.80	4,396.2	-1,293.5	-766.2	1,497.7	1.89	1.05	4.32
4,773.0	21.90	212.30	4,483.5	-1,323.4	-784.5	1,532.7	0.60	0.00	1.60
4,868.0	21.20	214.30	4,571.8	-1,352.5	-803.7	1,567.6	1.07	-0.74	2.11
4,962.0	20.00	215.00	4,659.8	-1,379.7	-822.5	1,600.6	1.30	-1.28	0.74
5,057.0	19.30	216.10	4,749.3	-1,405.7	-841.1	1,632.6	0.83	-0.74	1.16
5,151.0	18.70	214.90	4,838.1	-1,430.7	-858.8	1,663.2	0.76	-0.64	-1.28
5,246.0	18.00	214.60	4,928.3	-1,455.2	-875.9	1,693.1	0.74	-0.74	-0.32

<b>Company:</b>	Caerus Oil and Gas LLC	<b>Local Co-ordinate Reference:</b>	Well NPR 15D-10 596
<b>Project:</b>	SEC.10-T5S-R96W	<b>TVD Reference:</b>	WELL @ 6733.0ft (Original Well Elev)
<b>Site:</b>	K10 596 Pad Sec.10-T5S-R96W	<b>MD Reference:</b>	WELL @ 6733.0ft (Original Well Elev)
<b>Well:</b>	NPR 15D-10 596	<b>North Reference:</b>	True
<b>Wellbore:</b>	NPR 15D-10 596 Wellbore #1	<b>Survey Calculation Method:</b>	Minimum Curvature
<b>Design:</b>	NPR 15D-10 596 Wellbore #1	<b>Database:</b>	US_EDM

Survey									
Measured Depth (ft)	Inclination (°)	Azimuth (°)	Vertical Depth (ft)	+N/-S (ft)	+E/-W (ft)	Vertical Section (ft)	Dogleg Rate (°/100usft)	Build Rate (°/100usft)	Turn Rate (°/100usft)
5,340.0	17.40	214.50	5,017.9	-1,478.8	-892.1	1,721.6	0.64	-0.64	-0.11
5,435.0	16.60	214.10	5,108.7	-1,501.7	-907.7	1,749.4	0.85	-0.84	-0.42
5,529.0	16.20	214.30	5,198.9	-1,523.7	-922.7	1,775.9	0.43	-0.43	0.21
5,624.0	16.40	212.70	5,290.1	-1,545.9	-937.4	1,802.6	0.52	0.21	-1.68
5,718.0	16.40	212.30	5,380.2	-1,568.3	-951.6	1,829.1	0.12	0.00	-0.43
5,813.0	14.60	212.00	5,471.8	-1,589.8	-965.1	1,854.4	1.90	-1.89	-0.32
5,907.0	13.00	212.40	5,563.1	-1,608.7	-977.1	1,876.8	1.71	-1.70	0.43
6,002.0	13.30	212.00	5,655.6	-1,627.0	-988.6	1,898.4	0.33	0.32	-0.42
6,097.0	10.80	212.80	5,748.5	-1,643.8	-999.2	1,918.2	2.64	-2.63	0.84
6,192.0	8.90	216.70	5,842.1	-1,657.2	-1,008.4	1,934.4	2.12	-2.00	4.11
6,287.0	7.50	215.80	5,936.1	-1,668.1	-1,016.4	1,948.0	1.48	-1.47	-0.95
6,381.0	6.60	211.10	6,029.4	-1,677.7	-1,022.8	1,959.5	1.14	-0.96	-5.00
6,476.0	5.20	200.20	6,123.9	-1,686.4	-1,027.1	1,969.1	1.88	-1.47	-11.47
6,570.0	3.70	202.10	6,217.6	-1,693.2	-1,029.7	1,976.1	1.60	-1.60	2.02
6,665.0	3.10	223.10	6,312.4	-1,697.9	-1,032.7	1,981.7	1.44	-0.63	22.11
6,759.0	4.50	229.20	6,406.2	-1,702.2	-1,037.2	1,987.8	1.55	1.49	6.49
6,854.0	5.00	233.90	6,500.9	-1,707.1	-1,043.3	1,995.3	0.67	0.53	4.95
6,948.0	5.30	235.00	6,594.5	-1,712.0	-1,050.2	2,003.3	0.34	0.32	1.17
7,043.0	5.80	238.70	6,689.1	-1,717.0	-1,057.9	2,011.9	0.65	0.53	3.89
7,137.0	5.70	236.20	6,782.6	-1,722.0	-1,065.8	2,020.6	0.29	-0.11	-2.66
7,232.0	5.60	234.60	6,877.1	-1,727.3	-1,073.5	2,029.4	0.20	-0.11	-1.68
7,327.0	6.30	235.80	6,971.6	-1,733.0	-1,081.6	2,038.7	0.75	0.74	1.26
7,421.0	6.60	237.90	7,065.0	-1,738.7	-1,090.5	2,048.5	0.41	0.32	2.23
7,516.0	7.10	237.30	7,159.4	-1,744.8	-1,100.0	2,059.0	0.53	0.53	-0.63
7,610.0	6.80	243.60	7,252.7	-1,750.4	-1,109.9	2,069.3	0.87	-0.32	6.70
7,705.0	7.50	240.20	7,346.9	-1,756.0	-1,120.3	2,079.9	0.86	0.74	-3.58
7,799.0	8.60	240.10	7,440.0	-1,762.6	-1,131.8	2,091.9	1.17	1.17	-0.11
7,893.0	8.90	240.00	7,532.9	-1,769.7	-1,144.1	2,104.9	0.32	0.32	-0.11
8,176.0	7.60	239.60	7,813.0	-1,790.1	-1,179.2	2,142.0	0.46	-0.46	-0.14
8,460.0	6.00	239.10	8,095.0	-1,807.2	-1,208.2	2,172.8	0.56	-0.56	-0.18
8,743.0	5.90	249.30	8,376.5	-1,820.0	-1,234.5	2,198.4	0.37	-0.04	3.60
9,027.0	5.20	260.40	8,659.1	-1,827.3	-1,260.8	2,219.7	0.45	-0.25	3.91
9,311.0	5.60	257.80	8,941.9	-1,832.4	-1,287.1	2,239.1	0.17	0.14	-0.92
9,626.0	4.50	249.80	9,255.6	-1,839.9	-1,313.7	2,260.7	0.41	-0.35	-2.54
9,706.0	4.50	249.80	9,335.4	-1,842.0	-1,319.6	2,265.9	0.00	0.00	0.00

Checked By: _____	Approved By: _____	Date: _____
-------------------	--------------------	-------------