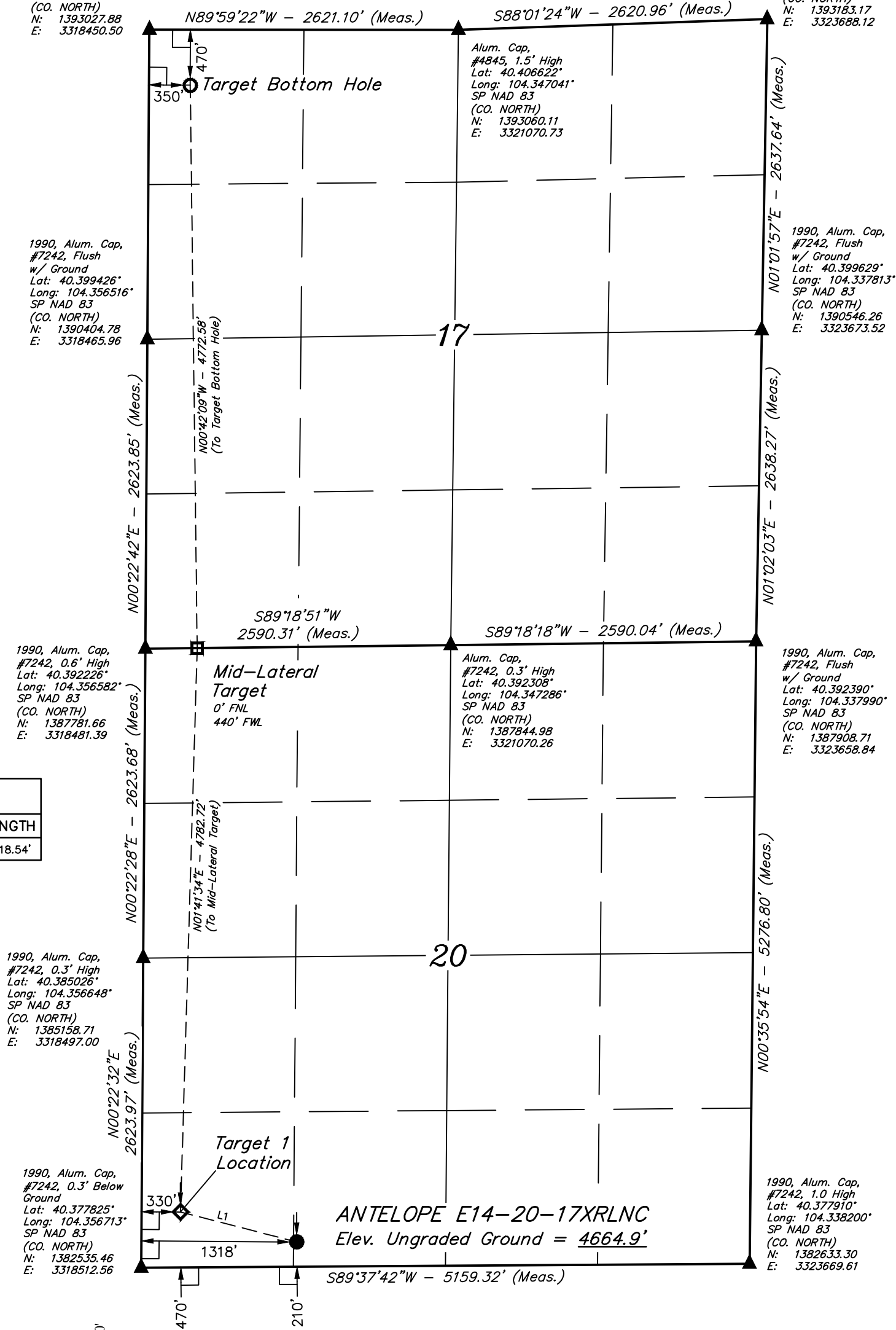


T5N, R62W, 6th P.M.

- Alum. Cap,
#4845, Flush
w/ Ground
Lat: 40.406627°
Long: 104.356450°
SP NAD 83
(CO. NORTH)
N: 1393027.88
E: 3318450.50

- Alum. Cap,
#4845, 1.0' High
Lat: 40.406866°
Long: 104.337637°
SP NAD 83
(CO. NORTH)
N: 1393183.17
E: 3323688.12



A horizontal scale bar with alternating black and white segments. It is labeled with '1000'' at both ends and '500'' and '0'' in the middle.

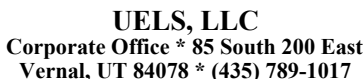
CERTIFICATE

THIS IS TO CERTIFY THAT THE ABOVE MAP WAS PREPARED FROM FIELD NOTES OF ACTUAL SURVEYS MADE BY ME OR UNDER MY SUPERVISION, AND THAT THE SAME ARE TRUE AND CORRECT TO THE BEST OF MY KNOWLEDGE AND BELIEF.


REGISTERED LAND SURVEYOR
REGISTRATION NO. 28285
STATE OF COLORADO

07-05-18

USGS COOPERATIVE BASE NETWORK CONTROL STATION, DESIGNATION "M 414". NGS DATA SHEET LISTS THE NAVD 88 ELEVATION AS BEING 4600.58 FEET.



**ANTELOPE E14-20-17XRLNC
SE 1/4 SW 1/4, SECTION 20, T5N, R62W, 6th P.M.
WELD COUNTY, COLORADO**

SURVEYED BY	JARED CHRISTOPHER, C.M.	06-17-16	SCALE
DRAWN BY	D.J.W.	07-03-18	1" = 1000'

WELL LOCATION PLAT