

CC 0697-03-15W
Garfield County, CO
Q180794 & RM-180668
Design #3

Company Name: Laramie Energy, LLC
CC 0697-03-15W
Garfield County, CO
Rig: 30" RKB
Created By: Will Jircik
Date: 7/8/2018

PROJECT DETAILS:	Garfield County, CO
Geodetic System:	US State Plane 1983
Datum:	North American Datum 1983
Ellipsoid:	GRS 1980
Zone:	Colorado Central Zone
System Datum:	Mean Sea Level

T

M

Azimuths to True North

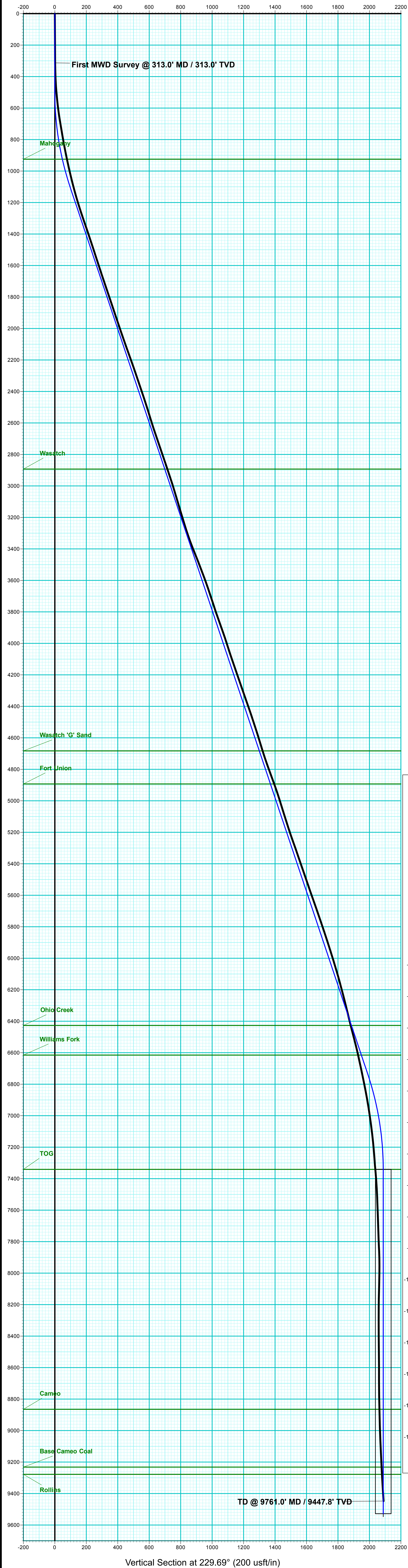
Magnetic North: 9.62°

Strength: 51396.1snT

Dip Angle: 65.58°

Date: 7/3/2018

Model: USER DEFINED



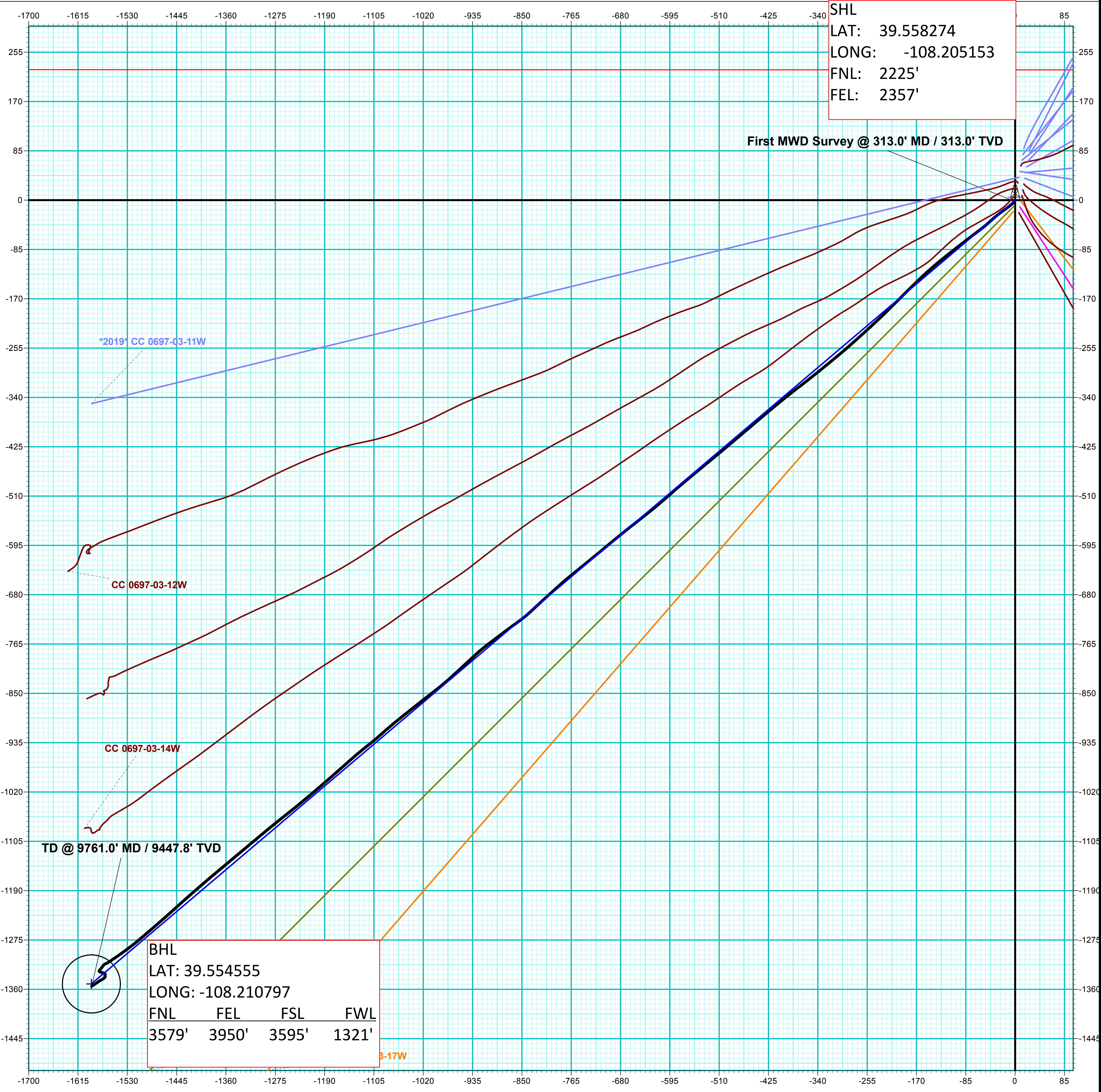
DESIGN TARGET DETAILS									
Name	TVD	+N/-S	+E/-W	Northing	Easting	Latitude	Longitude	Shape	
PBHL - CC 0697-03-15W	9528.0	-1350.7	-1592.0	1638282.15	2235761.21	39.554566	-108.210799	Circle (Radius: 50.0)	

DESIGN #3 ANNOTATIONS									
MD	Inc	Azi	TVD	+N/-S	+E/-W	VSect	Departure	Annotation	
500.0	0.00	0.00	500.0	0.0	0.0	0.0	0.0	KOP (Build 3" / 100')	
1113.8	18.56	229.69	1108.0	-64.3	-75.8	99.4	99.4	EOB @ 18.56" Inc. / 229.69° Azm	
7052.5	18.56	229.69	6733.0	-1286.5	-1516.2	1988.4	1988.4	Drop 3" / 100'	
7671.3	0.00	0.00	7341.0	-1350.7	-1592.0	2087.8	2087.8	EOD @ Vertical	
9858.3	0.00	0.00	9528.0	-1350.7	-1592.0	2087.8	2087.8	TD @ 9858.3' MD / 9528.0' TVD	

FORMATION TOP DETAILS		
TVDPath	MDPath	Formation
925.0	928.6	Mahogany
2893.0	3001.7	Wasatch
4883.0	4890.0	Wasatch 'G' Sand
4893.0	5111.5	Fort Union
6427.0	6729.7	Ohio Creek
6615.0	6928.0	Williams Fork
7341.0	7671.3	TOG
8865.0	9195.3	Cameo
9232.0	9562.3	Base Cameo Coal
9278.0	9608.3	Rollins

WELL DETAILS: CC 0697-03-15W						
+N/-S	+E/-W	Northing	Easting	8428.0	Latitude	Longitude
0.0	0.0	1639584.90	2237392.73		39.558274	-108.205153

ANNOTATIONS								
MD	Inc	Azi	TVD	+N/-S	+E/-W	VSec	Departure	Annotation
313.0	0.80	203.70	313.0	-2.0	-0.9	2.0	2.2	First MWD Survey @ 313.0' MD / 313.0' TVD
9761.0	3.70	236.60	9447.8	-1354.7	-1591.4	2089.9	2112.9	TD @ 9761.0' MD / 9447.8' TVD



Vertical Section at 229.69° (200 usft/in)