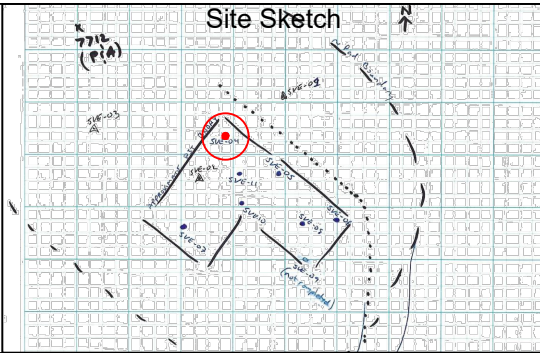




240 Mesa Avenue
Grand Junction, CO 81501
TEL (970) 640-0568
Entradainc.com

Utah Gas Corp.
DPU 7712
Proj.# 018-062



Soil Boring / Completion Log (Page 1 of 1)

Date Started: 8/15/18

Date Completed: 8/15/18

Boring Diameter: 4.25"

Drilling Method: SSA

Logged By: RAS

Drilling Co.: CO Sampling

Sample Method: SS/Cutting

Boring/Well ID: SVE-04

Coordinates: 12S

UTM

E 683341.52

N 4386120.10

Depth in Feet	Surface Elevation	Description	Moisture	% Fines	Sample	PID (ppm)	Staining	H ₂ O Level	Depth in Feet	Well: SVE-04 Elevation: +2.65'
0		FILL, Local native brown silt/silty clay with small stones and cobble; dry. No stains or HC odors.							0	
		SILTY CLAY, Stained black and dark grey. Strong HC odor. very low moisture.	5	90		340				
20			10	95		160			20	
			10	95	TPH = 170 mg/kg	164				
40			10	95		168			40	
			10	95	08152018-7712-SVE4: 65-70'	90				
60									60	
80		Total Boring Depth = 70'							80	

Cuttings

2"- Sch. 40, Solid PVC Riser

Bentonite Pellets

10-20 Silica Sand

2"- Sch. 40, #10 Slotted PVC Screen

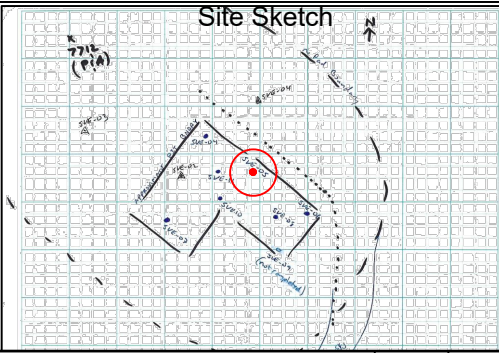
Well Bore Sluff



240 Mesa Avenue
Grand Junction, CO 81501
TEL (970) 640-0568
Entradainc.com

Utah Gas Corp.
DPU 7712
Proj.# 018-062

Site Sketch



Soil Boring / Completion Log (Page 1 of 1)

Date Started: 8/15/18

Date Completed: 8/16/18

Boring Diameter: 4.25"

Drilling Method: SSA

Logged By: RAS

Drilling Co.: CO Sampling

Sample Method: SS/Cutting

Boring/Well ID: SVE-05

Coordinates: 12S

UTM

E 683345.20

N 4386118.72

Depth in Feet	Surface Elevation	Description	Moisture	% Fines	Sample	PID (ppm)	Staining	H ₂ O Level	Depth in Feet	Well: SVE-05 Elevation: +2.0'
0		FILL, Local native brown silt/silty clay with small stones and cobble; dry. No stains or HC odors.							0	
20		SILTY CLAY, Stained black and dark grey. Strong HC odor. very low moisture.	5	90		272			20	
			10	95		1700				
			10	95		2992				
40			10	95		2416			40	
			10	95		817				
60		Total Boring Depth = 60'	10	95					60	
80									80	

Well: SVE-05
Elevation: +2.0'

Riser: +2.0'

Cuttings

2"- Sch. 40, Solid PVC Riser

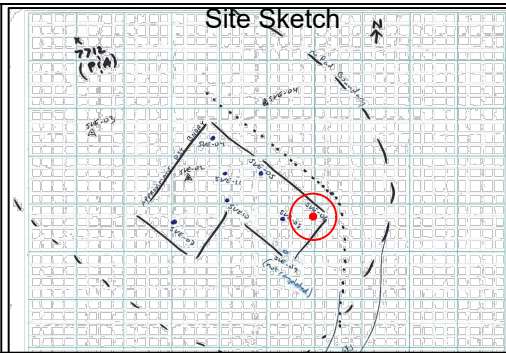
Bentonite Pellets

10-20 Silica Sand

2"- Sch. 40, #10 Slotted PVC Screen

240 Mesa Avenue
Grand Junction, CO 81501
TEL (970) 640-0568
Entradainc.com

Utah Gas Corp.
DPU 7712
Proj.# 018-062



Soil Boring / Completion Log (Page 1 of 1)

Date Started: 8/16/18

Boring/Well ID: SVE-06

Date Completed: 8/16/18

Boring Diameter: 4.25"

Coordinates: 12S

Drilling Method: SSA

UTM

Logged By: RAS

E	683347.02
---	-----------

Drilling Co.: CO Sampling

N	4386115.20
---	------------

Sample Method: SS/Cutting

Depth in Feet	Surface Elevation	Description	Moisture	% Fines	Sample	PID (ppm)	Staining	H ₂ O Level	Depth in Feet
0		FILL, Local native brown silt/silty clay with small stones and cobble; dry. No stains or HC odors.	25	90		160			0
20		SILTY CLAY, Stained black and dark grey. Strong HC odor. very low moisture.	10	95		80			20
40			10	95		202			40
60			10	95		320			60
			10	95	08162018-7712-SVE6: 55-60'	81			
						84			
60		Total Boring Depth = 60'							60
80									80

Well: SVE-08

Elevation: +2.0'

Riser: +2.0'

Cuttings

2"- Sch. 40, Solid PVC Riser

Bentonite Pellets

10-20 Silica Sand

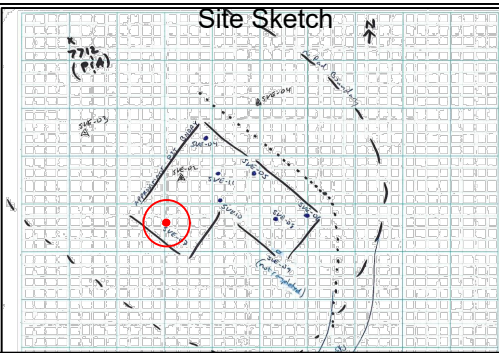
2"- Sch. 40, #10 Slotted PVC Screen



240 Mesa Avenue
Grand Junction, CO 81501
TEL (970) 640-0568
Entradainc.com

Utah Gas Corp.
DPU 7712
Proj.# 018-062

Site Sketch



Soil Boring / Completion Log (Page 1 of 1)

Date Started: 8/16/18

Date Completed: 8/16/18

Boring Diameter: 4.25"

Drilling Method: SSA

Logged By: RAS

Drilling Co.: CO Sampling

Sample Method: SS/Cutting

Boring/Well ID: SVE-07

Coordinates: 12S

UTM

E 683338.92

N 4386113.74

Depth in Feet	Surface Elevation	Description	Moisture	% Fines	Sample	PID (ppm)	Staining	H ₂ O Level	Depth in Feet	Well: SVE-07 Elevation: +2.0'
0		FILL, Local native brown silt/silty clay with small stones and cobble; dry. No stains or HC odors.	15	90					0	
20		SILTY CLAY, Brow, dry, Strong HC odor.	5	95	TPH = 7.2 mg/kg	88			20	
40			5	95	08162018-7712-SVE7: 55-60'	338			40	
60		Total Boring Depth = 58'	5	95		48			60	
80									80	

Well: SVE-07
Elevation: +2.0'

Riser: +2.0'

Cuttings

2"- Sch. 40, Solid PVC Riser

Bentonite Pellets

10-20 Silica Sand

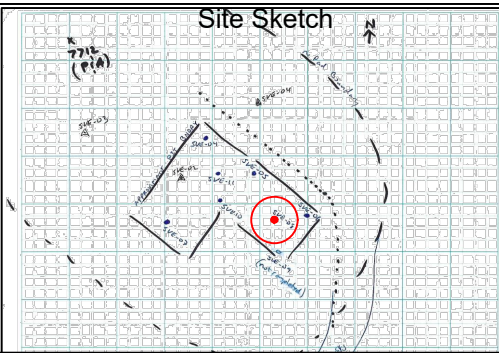
2"- Sch. 40, #10 Slotted PVC Screen



240 Mesa Avenue
Grand Junction, CO 81501
TEL (970) 640-0568
Entradainc.com

Utah Gas Corp.
DPU 7712
Proj.# 018-062

Site Sketch



Soil Boring / Completion Log (Page 1 of 1)

Date Started: 8/17/18

Date Completed: 8/17/18

Boring Diameter: 4.25"

Drilling Method: SSA

Logged By: RAS

Drilling Co.: CO Sampling

Sample Method: SS/Cutting

Boring/Well ID: SVE-08

Coordinates: 12S

UTM

E 683350.52

N 4386116.10

Depth in Feet	Surface Elevation	Description	Moisture	% Fines	Sample	PID (ppm)	Staining	H ₂ O Level	Depth in Feet	Well: Elevation: Riser: +1.0'
0		FILL, Local native brown silt/silty clay with small stones and cobble; dry. No stains or HC odors.							0	
		SILTY CLAY, Stained black and dark grey. Strong HC odor. very low moisture.	10	90		3142				
20			10	95	TPH = 4871 mg/kg	1760			20	
			10	95						
40			10	95	08172018-7712-SVE8: 55-60'				40	
			10	95		1400				
60		Total Boring Depth = 60'							60	
80									80	

Cuttings

2"- Sch. 40, Solid PVC Riser

Bentonite Pellets

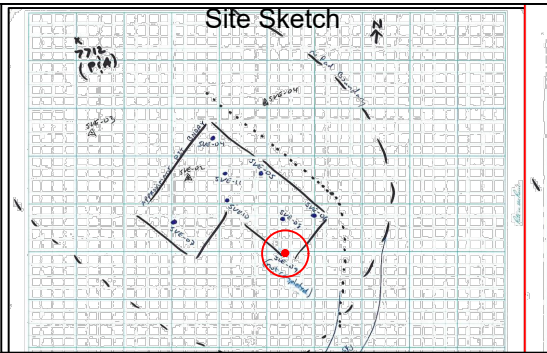
10-20 Silica Sand

2"- Sch. 40, #10 Slotted PVC Screen

Well Bore Sluff

240 Mesa Avenue
Grand Junction, CO 81501
TEL (970) 640-0568
Entradainc.com

Utah Gas Corp.
DPU 7712
Proj.# 018-062



Soil Boring / Completion Log (Page 1 of 1)

Date Started: 8/17/18

Boring/Well ID: SVE-09

Date Completed: 8/17/18

Boring Diameter: 4.25"

Coordinates: 12S

Drilling Method: SSA

UTM

Logged By: RAS

E	683348.22
---	-----------

Drilling Co.: CO Sampling

N	4386111.07
---	------------

Sample Method: SS/Cutting

Depth in Feet	Surface Elevation		Description	Moisture	% Fines	Sample	PID (ppm)	Staining	H ₂ O Level	Depth in Feet
0			FILL, Local native brown silt/silty clay with small stones and cobble; dry. No stains or HC odors.							0
			SILTY CLAY, Brown, dry, No Staining or HC odor.	15	80		34			
20				5	80		3			20
				5	80		8			
40			Total Boring Depth = 35'				4			40
60										60
80										80

Well: SVE-09
Elevation:

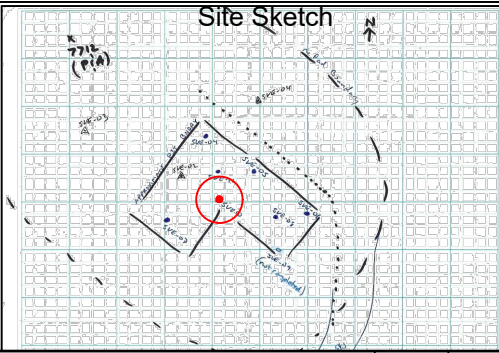
Not Completed - lack of field evidence for contamination



240 Mesa Avenue
Grand Junction, CO 81501
TEL (970) 640-0568
Entradainc.com

Utah Gas Corp.
DPU 7712
Proj.# 018-062

Site Sketch



Soil Boring / Completion Log (Page 1 of 1)

Date Started: 8/17/18

Date Completed: 8/17/18

Boring Diameter: 4.25"

Drilling Method: SSA

Logged By: RAS

Drilling Co.: CO Sampling

Sample Method: SS/Cutting

Boring/Well ID: SVE-10

Coordinates: 12S

UTM

E 683344.25

N 4386113.02

Depth in Feet	Surface Elevation	Description	Moisture	% Fines	Sample	PID (ppm)	Staining	H ₂ O Level	Depth in Feet	Well: SVE-10 Elevation: +3.0'
0		FILL, Local native brown silt/silty clay with small stones and cobble; dry. No stains or HC odors.	10	75		96			0	
20		SILTY CLAY, Stained black and dark grey. Strong HC odor. very low moisture.	10	95	TPH = 4460 mg/kg	1568			20	
			5	95	08172018-7712-SVE10: 50-53'	2122				
40			5	95		1425			40	
			5	95		886				
60		Total Boring Depth = 53' (Refusal)							60	
80									80	

Cuttings

2"- Sch. 40, Solid PVC Riser

Bentonite Pellets

10-20 Silica Sand

2"- Sch. 40, #10 Slotted PVC Screen

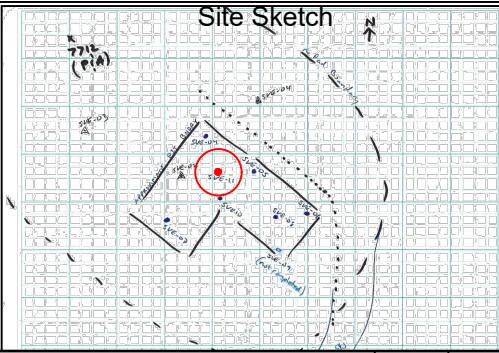
Well Bore Sluff



240 Mesa Avenue
Grand Junction, CO 81501
TEL (970) 640-0568
Entradainc.com

Utah Gas Corp.
DPU 7712
Proj.# 018-062

Site Sketch



Soil Boring / Completion Log (Page 1 of 1)

Date Started: 8/17/18

Date Completed: 8/17/18

Boring Diameter: 4.25"

Drilling Method: SSA

Logged By: RAS

Drilling Co.: CO Sampling

Sample Method: SS/Cutting

Boring/Well ID: SVE-11

Coordinates: 12S

UTM

E 683342.77

N 4386115.91

Depth in Feet	Surface Elevation	Description	Moisture	% Fines	Sample	PID (ppm)	Staining	H ₂ O Level	Depth in Feet	Well: Elevation: Riser: +2.0'
0		FILL, Local native brown silt/silty clay with small stones and cobble; dry. No stains or HC odors.	25	90		61			0	
20		SILTY CLAY, Stained black and dark grey. Strong HC odor. very low moisture.	10	95	TPH = 3066 mg/kg	480			20	
40			10	95	08172018-7712-SVE11: 55-60'	938			40	
60			5	95		1253			60	
80			5	95		591			80	
		Total Boring Depth = 60'				629				

Well: SVE-08
Elevation: +2.0'
Riser: +2.0'
Cuttings
2"- Sch. 40, Solid PVC Riser
Bentonite Pellets
10-20 Silica Sand
2"- Sch. 40, #10 Slotted PVC Screen