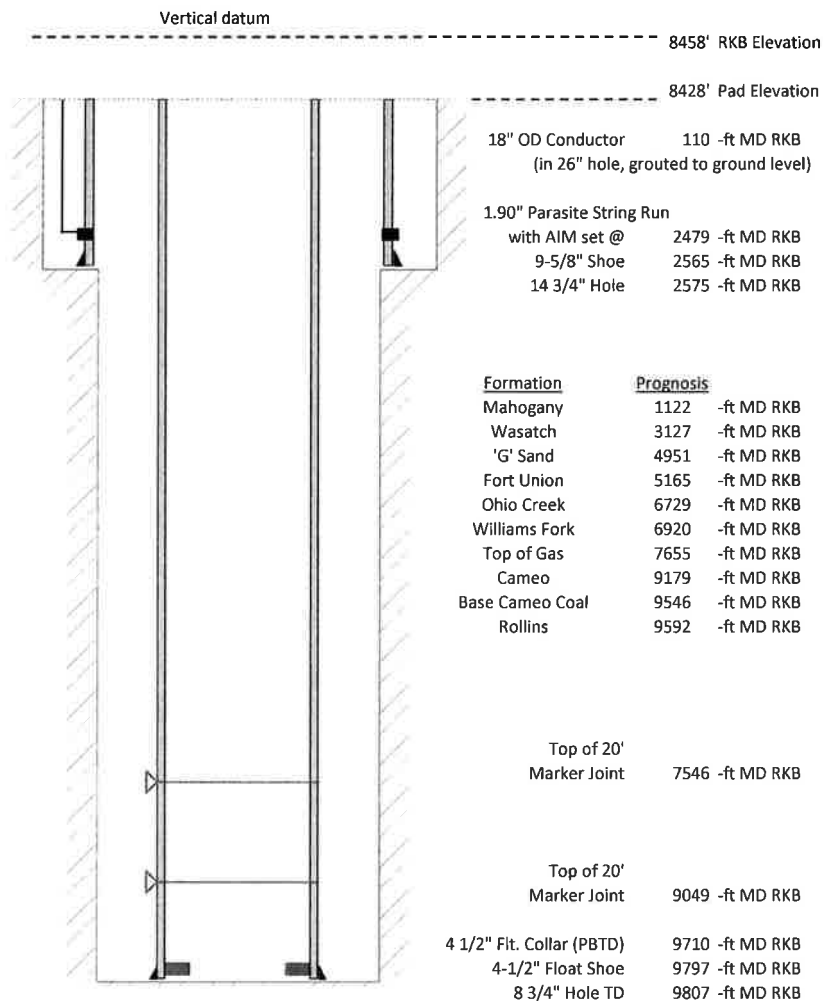


Laramie Energy, LLC
 CC 0697-03-13E
 Slot A-8
 H&P 522 (30-ft KB)

API # : 05-045-23813-00
 Lot 11/S3/T6S/R97W/6th PM
 Garfield County, CO
 Date of diagram : 6/10/2018



Cementing details

8-5/8" 24# Surface Csg	Lead	Tail
Density (ppg)	12.3	12.8
Volume (sx)	1015	292
Yield (cf/sx)	2.38	2.11
Top (ft RKB)	0	2030
Bottom (ft RKB)	2030	2565
Returns (full or partial)	partial	partial

4-1/2" 11.6# Prod Csg	Lead	Tail
Density (ppg)	12.5	13.0
Volume (sx)	1214	519
Yield (cf/sx)	1.94	2.06
Est Top (ft RKB)	2030	7455
Est Bottom (ft RKB)	7455	9797
Returns (full or partial)	full	Partial

Displacement
8.3 ppg
150.5 bbls

Other Remarks : surface-partial returns, top out-60 sx 12.7 bbls 15.6 ppg production-
 no returns while displacing