

APACHE CANYON 03-11 API# 05-071-09629 – TIMBER CREEK
OGCC OPERATOR NUMBER 10672 - DATE: OCTOBER 10, 2018
4 CORRECTIVE ACTIONS COMPLETED REGARDING COGCC FIR DOCUMENT # 682600545



The stains were removed and gravel was placed in the disturbance.

APACHE CANYON 03-11 API# 05-071-09629 – TIMBER CREEK
OGCC OPERATOR NUMBER 10672 - DATE: OCTOBER 5, 2018
5 CORRECTIVE ACTIONS COMPLETED REGARDING COGCC FIR DOCUMENT # 682600545



Stormwater controls on the southeast side of the well pad. The armor was reset to direct stormwater run-off to the armored outfall.

APACHE CANYON 03-11 API# 05-071-09629 – TIMBER CREEK
OGCC OPERATOR NUMBER 10672 - DATE: OCTOBER 5, 2018
5 CORRECTIVE ACTIONS COMPLETED REGARDING COGCC FIR DOCUMENT # 682600545



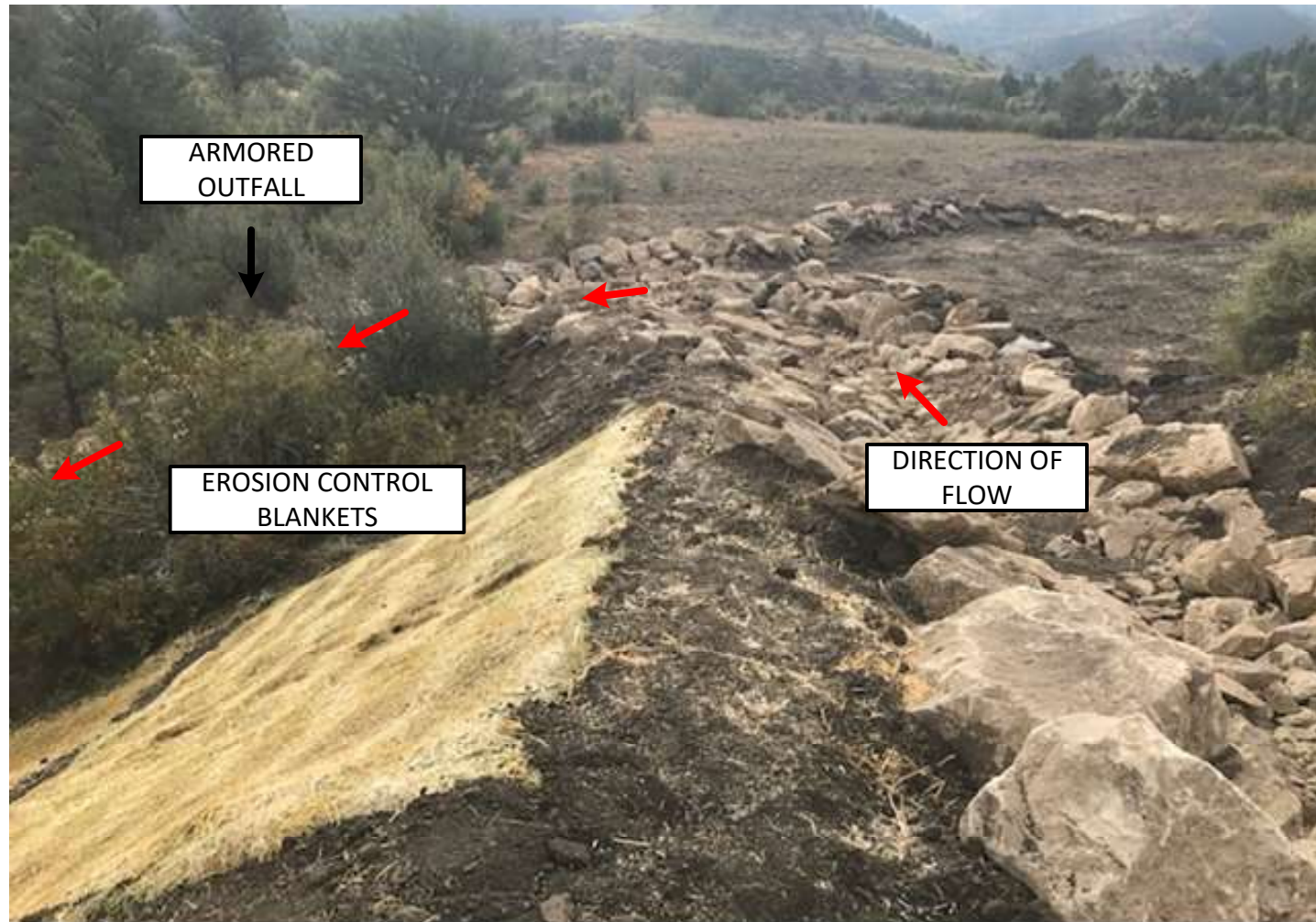
The erosion rill was corrected by placing soil in the rill. Erosion control blankets were installed in the disturbance and seeded with an approved CPW seed mix to promote the establishment of vegetation.

APACHE CANYON 03-11 API# 05-071-09629 – TIMBER CREEK
OGCC OPERATOR NUMBER 10672 - DATE: OCTOBER 5, 2018
5 CORRECTIVE ACTIONS COMPLETED REGARDING COGCC FIR DOCUMENT # 682600545



Facing north toward well pad

APACHE CANYON 03-11 API# 05-071-09629 – TIMBER CREEK
OGCC OPERATOR NUMBER 10672 - DATE: OCTOBER 5, 2018
5 CORRECTIVE ACTIONS COMPLETED REGARDING COGCC FIR DOCUMENT # 682600545



Facing south

APACHE CANYON 03-11 API# 05-071-09629 – TIMBER CREEK
OGCC OPERATOR NUMBER 10672 - DATE: OCTOBER 5, 2018
5 CORRECTIVE ACTIONS COMPLETED REGARDING COGCC FIR DOCUMENT # 682600545



Stormwater run-off is directed to this armored outfall for erosion control.