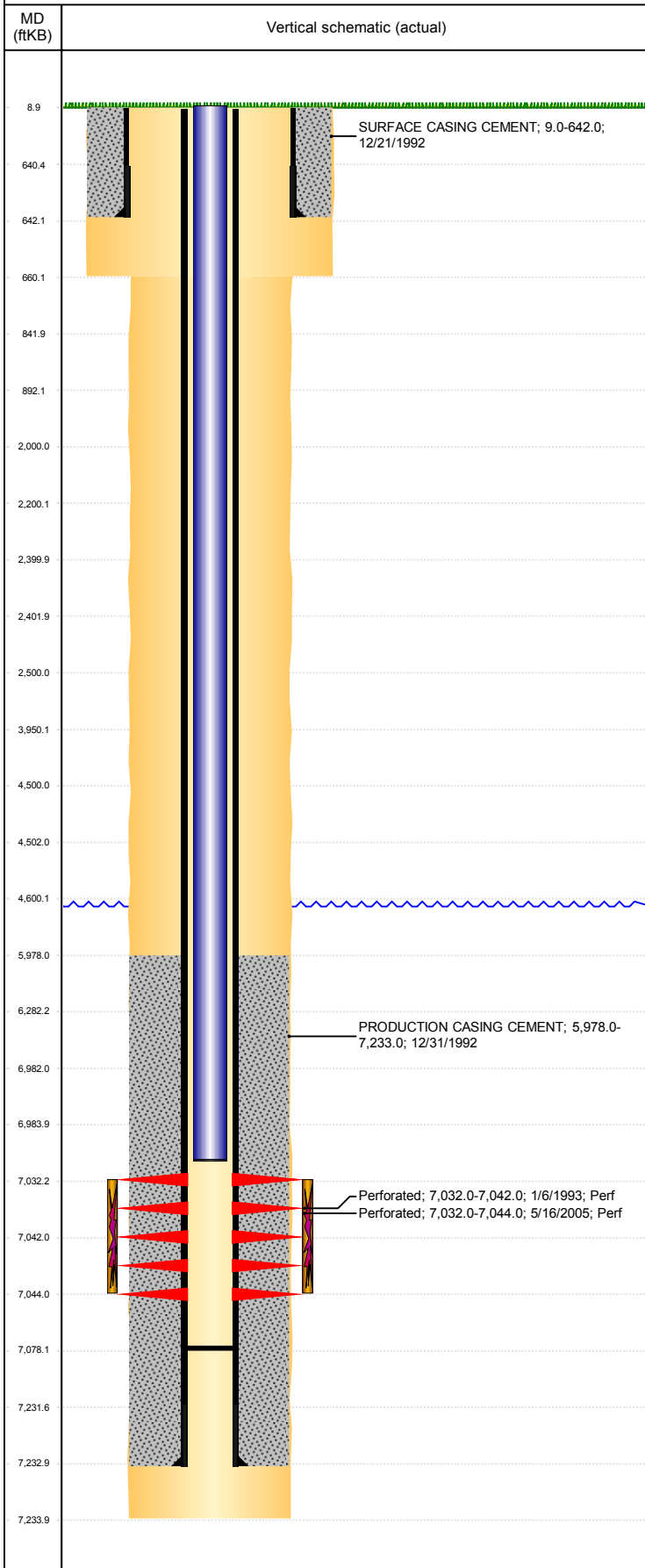


Well Name: RIVA WHITE D31-01

VERTICAL - ORIGINAL HOLE, 10/9/2018 10:42:48 AM



| Well Header | | | | | | | | | |
|----------------------------------|-------------|---------------------------|-------------|--------------------|--|------------------------------|------------------------------------|---------------------------------------|------------|
| API 05-123-16587 | | Business Unit DJ BASIN | | | District 15 | | Well Config VERTICAL | | |
| KB - GL / MSL (ft... 9.00 | | Spud Date 12/20/1992 | | P & A Date | | Well Production Status PR | | | SoRT No |
| Comment | | | | | | | | | |
| Surface Location (Congressional) | | | | | | | | | |
| Qtr 3 NE | Qtr 4 NE | Section 31 | Twnshp 3 | Twنش... N | Range 64 | Rng E/... W | Actual Latitude (°) 40.18709048 | Actual Longitude (°) -104.58713631 | |
| Wellbore Sections | | | | | | | | | |
| Section Des | | | Size (in) | | | Act Top, MD (ftKB) | | Act Btm, MD (ftKB) | |
| SURFACE | | | 12 1/4 | | | 9 | | 660 | |
| PRODUCTION | | | 7 7/8 | | | 660 | | 7,234 | |
| Casing Strings | | | | | | | | | |
| Csg Des | | | Run Date | | OD (in) | Wt/Len (lb/ft) | Grade | Top, MD (ftKB) | MD (ftKB) |
| Surface | | | 12/21/1992 | | 8 5/8 | 24.00 | | 9.0 | 642.0 |
| Production | | | 12/31/1992 | | 2 7/8 | 7.90 | N-80 | 9.0 | 7,233.0 |
| Cement | | | | | | | | | |
| Des | | | | | Start Date | | Top (ftKB) | | Btm (ftKB) |
| SURFACE CASING CEMENT | | | | | 12/21/1992 | | 9.0 | | 642.0 |
| PRODUCTION CASING CEMENT | | | | | 12/31/1992 | | 5,978.0 | | 7,233.0 |
| Zone Statuses | | | | | | | | | |
| Zone Name | | Status Date | Status | Fluid Type | Job | | | Prod Method | |
| CODELL | | 3/5/1993 | PR | Gas | DRILLING/COMPLETION - ORIGINAL, 12/20/199... | | | | |
| CODELL | | 6/7/2005 | PR | Gas | RE-FRAC, 5/12/2005 00:00 | | | | |
| Perforation Data | | | | | | | | | |
| Linked Zone | | | Bnch/Stg | Entered Shot Total | Top (ftKB) | | Btm (ftKB) | | Date |
| CODELL, ORIGINAL HOLE | | | | | | | | | 8/16/2018 |
| CODELL, ORIGINAL HOLE | | | | 40 | 7,032.00 | | 7,042.00 | | 1/6/1993 |
| CODELL, ORIGINAL HOLE | | | | 48 | 7,032.00 | | 7,044.00 | | 5/16/2005 |
| Stimulation Intervals | | | | | | | | | |
| Zone | | | | Start Date | | Top (ftKB) | | Btm (ftKB) | |
| CODELL, ORIGINAL HOLE | | | | 1/7/1993 | | 7,032.0 | | 7,042.0 | |
| CODELL, ORIGINAL HOLE | | | | 6/6/2005 | | 7,032.0 | | 7,044.0 | |
| Other In Hole | | | | | | | | | |
| Run Date | | Des | | | | OD (in) | Top (ftKB) | | Btm (ftKB) |
| | | | | | | | | | |
| Logs | | | | | | | | | |
| Date | | Type | | | | Top, MD (ftKB) | | Btm, MD (ftKB) | |
| 12/30/1992 | | COMPENSATED DENSITY | | | | 6,250.0 | | 7,234.0 | |
| 12/30/1992 | | INDUCTION | | | | 4,250.0 | | 4,650.0 | |
| 1/5/1993 | | CBL/CCL/GR | | | | 5,880.0 | | 7,199.0 | |
| 4/13/2011 | | GYRO | | | | 10.0 | | 7,070.0 | |
| 4/14/2011 | | GYRO | | | | 0.0 | | 7,070.0 | |
| Plug Back Total Depths | | | | | | | | | |
| Date | | Type | | Com | | | | Depth (ftKB) | |
| 12/31/1992 | | LATCH DOWN COLLAR | | | | | | 7,194.0 | |
| 4/13/2011 | | FILL | | | | | | 7,078.0 | |