

HALLIBURTON

iCem[®] Service

TERRA ENERGY PARTNERS

United States of America, COLORADO

For: Terra

Date: Wednesday, August 01, 2018

PA 412-26 Surface PJR

API# 05-045-23718-00

Sincerely,

Grand Junction Cement Engineering

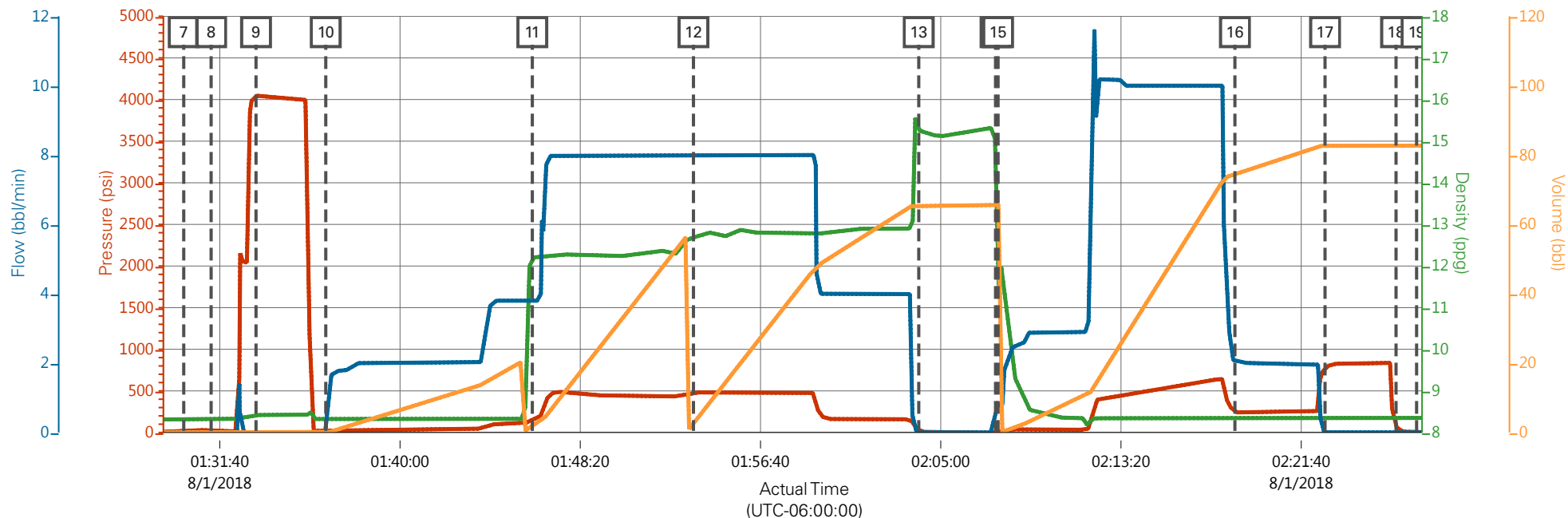
2.0 Real-Time Job Summary

2.1 Job Event Log

Type	Seq. No.	Graph Label	Date	Time	Source	DH Density (ppg)	Comb Pump Rate (bbl/min)	PS Pump Press (psi)	Pump Stg Tot (bbl)	Comments
Event	1	Call Out	7/31/2018	15:00:00	USER					
Event	2	Pre-Convoy Safety Meeting	7/31/2018	18:20:00	USER					JOURNEY MANAGEMENT COMPLETE, AS WELL AS JSA
Event	3	Crew Leave Yard	7/31/2018	18:30:00	USER					
Event	4	Arrive At Loc	7/31/2018	20:00:00	USER					JOURNEY MANAGEMENT CLOSED OUT.
Event	5	Pre-Rig Up Safety Meeting	7/31/2018	22:00:00	USER					JSA COMPLETE
Event	6	Assessment Of Location Safety Meeting	7/31/2018	22:00:00	USER					
Event	7	Rig-Up Equipment	7/31/2018	22:30:00	USER					
Event	8	Other	7/31/2018	22:45:00	USER					WATER TEST: PH-7, TEMP - 68, CL-0 TP- 1126.57, TD-1134, F.C.- 1083.28, HOLE- 13.5
Event	9	Pre-Job Safety Meeting	8/1/2018	00:20:00	USER					JSA COMPLETE
Event	10	Start Job	8/1/2018	01:30:00	COM5					
Event	11	Prime Pumps	8/1/2018	01:31:16	COM5					FRESH WATER
Event	12	Test Lines	8/1/2018	01:33:21	COM5	8.33	0.00	4102.00	0.00	4102 PSI
Event	13	Pump Spacer 1	8/1/2018	01:36:34	COM5	8.33	4.00	100.0	20.0	FRESH WATER
Event	14	Pump Lead Cement	8/1/2018	01:46:07	COM5	12.30	8.00	480.0	53.0	125 SKS VARICEM 12.3 PPG, 2.38 FT3/SK, 13.77 GAL/SK

Event	15	Pump Tail Cement	8/1/2018	01:53:34	COM5	12.80	8.00	478.00	65.8	175 SKS VARICEM, 12.8 PPG, 2.11 FT3/SK 11.78 GAL/SK
Event	16	Shutdown	8/1/2018	02:03:59	COM5					TO DROP TOP PLUG, WASH UP TUB ON TOP OF PLUG
Event	17	Drop Plug	8/1/2018	02:07:32	COM5					AWAY POSITIVE DISPLACEMENT
Event	18	Pump Displacement	8/1/2018	02:07:39	COM5	8.33	10.0	640.0	83.7	FRESH WATER
Event	19	Slow Rate	8/1/2018	02:18:36	COM5	8.33	2.00	236.00	73.0	TO BUMP PLUG
Event	20	Bump Plug	8/1/2018	02:22:46	COM5	8.33	2.00	245.0	83.7	PLUG BUMPED
Event	21	Check Floats	8/1/2018	02:26:03	COM5			846.0		FLOATS HELD, 0.5 BBLS BACK TO TRUCK
Event	22	End Job	8/1/2018	02:27:00	COM5					GOOD CIRCULATION THROUGHOUT JOB, NO PIPE MOVEMENT, 23.7 BBLS OF CEMENT TO SURFACE.
Event	23	Post-Job Safety Meeting (Pre Rig-Down)	8/1/2018	02:40:00	USER					JSA COMPLETE
Event	24	Crew Leave Location	8/1/2018	03:30:00	USER					THANK YOU FOR USING HALLIBURTON CMT, JAMES LEIST AND CREW

TEP PA 412-26 Surface



PS Pump Press (psi) DH Density (ppg) Comb Pump Rate (bbl/min) Pump Stg Tot (bbl)

Description	Actual Time (UTC-06:00:00)	PS Pump Press (psi)	DH Density (ppg)	Comb Pump Rate (bbl/min)	Pump Stg Tot (bbl)
7 Start Job	01:30:00	19.00	8.33	0.00	0.00
8 Prime Pumps	01:31:16	29.00	8.33	0.00	0.00
9 Test Lines	01:33:21	4049.00	8.42	0.00	0.00
10 Pump Spacer 1	01:36:34	11.00	8.32	0.00	0.00
11 Pump Lead Cement	01:46:07	171.00	12.23	3.80	1.80
12 Pump Tail Cement	01:53:34	478.00	12.69	8.00	2.70
13 Shutdown	02:03:59	23.00	15.25	0.00	65.50
14 Drop Plug	02:07:32	3.00	14.01	0.80	65.50
15 Pump Displacement	02:07:39	9.00	11.83	0.80	65.60
16 Slow Rate	02:18:36	246.00	8.34	2.00	74.70
17 Bump Plug	02:22:46	773.00	8.36	0.00	82.70
18 Check Floats	02:26:03	71.00	8.34	0.00	82.70
19 End Job	02:27:00	0.00	8.35	0.00	82.70

TEP PA 412-26 Surface

