



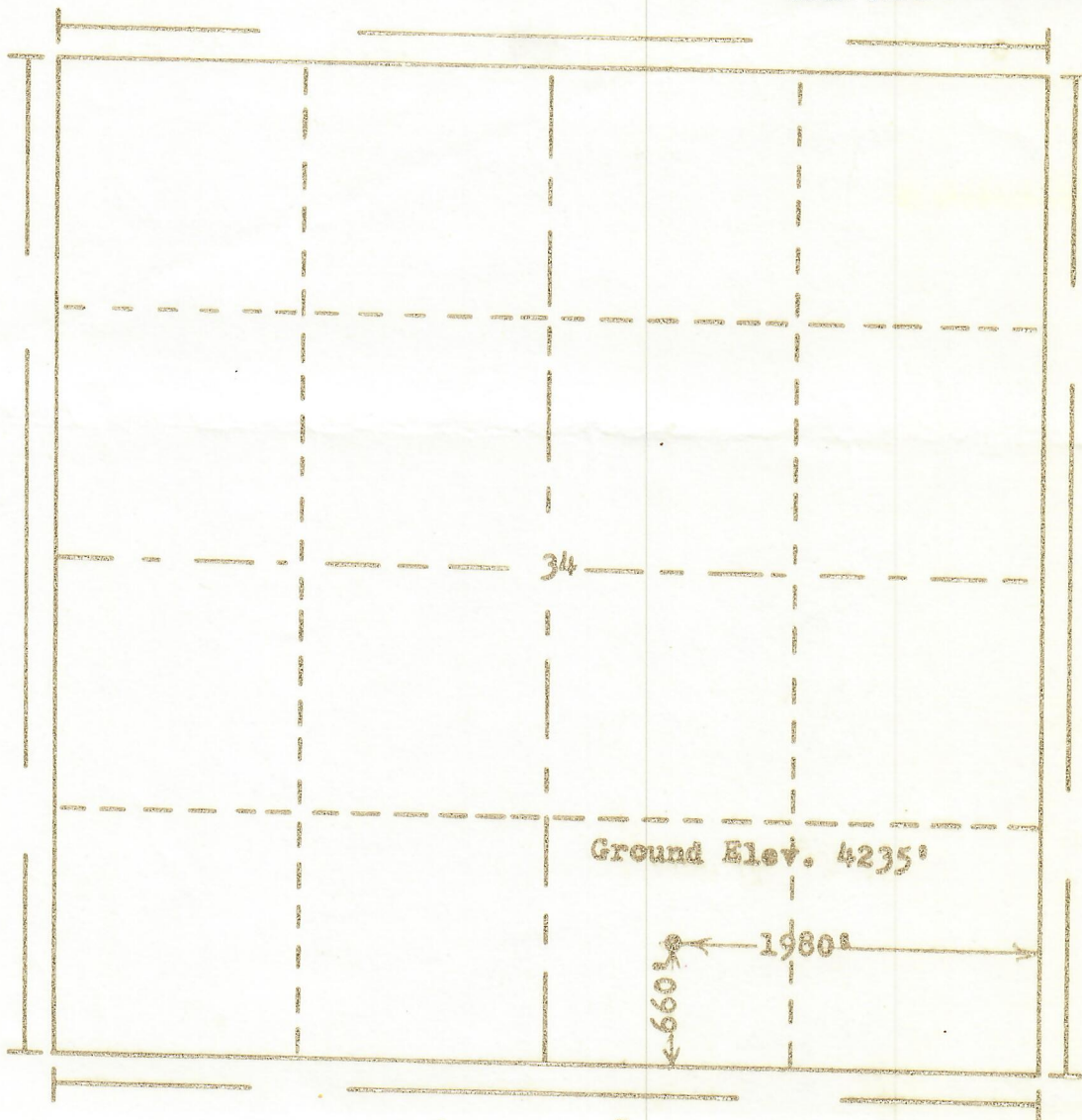
00517551

RECEIVED

MAR 11 1969

COLO. OIL & GAS CONS. COMM.

R. 48W



Scale... 1" = 1000'

Powers Elevation Company, Inc. of Denver, Colorado
has in accordance with a request from Mr. Dow
for Trend Exploration Ltd.

determined the location of No. 1 M. Well
to be CSW SE Section 34 Township 15S
Range 48W of the 6th Principal Meridian
Cheyenne County, Colorado

I hereby certify that this plat is an
accurate representation of a correct
survey showing the location of

Date: 2-18-69

B. J. Neece
Licensed Land Surveyor No. 2853
State of Colorado