



00224448

RECEIVED

SEP 18 1972

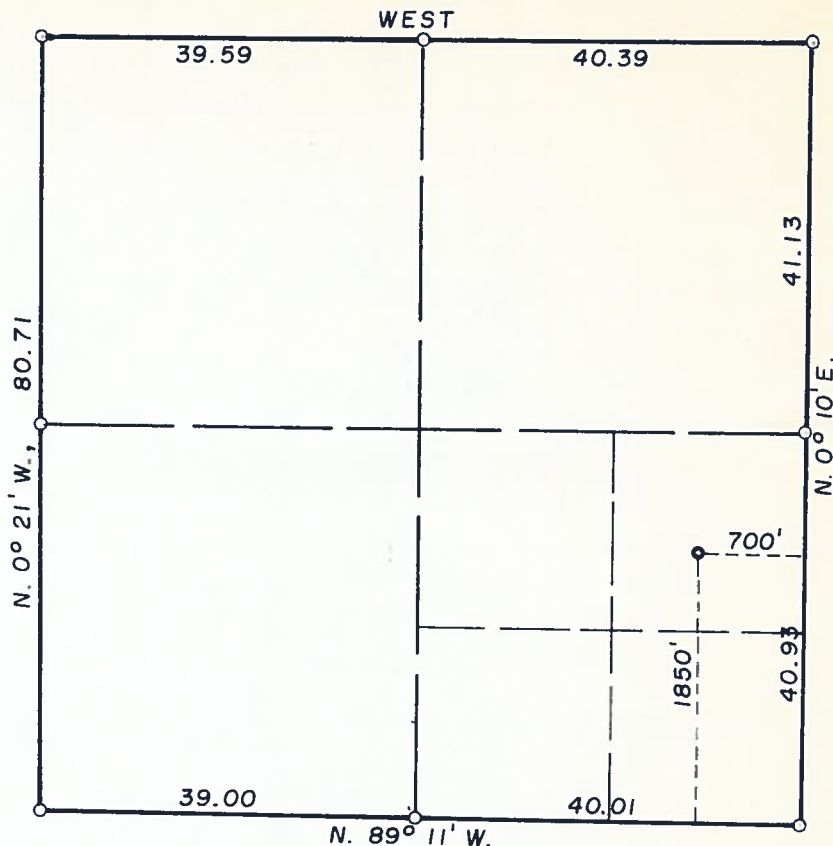
SECTION 6
T. 6 N.-R. 89W., 6th P. M.
ROUTT COUNTY, COLORADO



SCALE

1" = 20 Chains

DISTANCES ARE EX-
PRESSED IN CHAINS
EXCEPT AS INDICATED.



LEGEND

- U.S. Government Brass Cap corner
- Original stone corner, properly marked, firmly set
- Iron pipe set at proportionate distance
- Corner established by others as indicated
- W. L. C. & L. Brass Cap set
- Temporary corner set this survey
- Dependent Resurvey
- Protraction
- Well location

ELEVATIONS:

Before grading.

- LOCATION.....6332
- R. P. 200' N.6326
- R. P. 200' S.6339
- R. P. 200' E.6354
- R. P. 200' W.6325
- SP-12, T. 38S., R. 71E...6331

ELEV'S. REFERRED TO:

U.S.G.S. SW Sec. 6
El. 6722

SURVEY AND PLAT BY

WORTHINGTON, LENHART, CARPENTER & LADD, INC.

632 SOUTH DAVID STREET; CASPER, WYOMING

Direct solar lines and chained distances, Ref. Book No. 475, P. 38

PLATTED FIELD NOTES OF SURVEY

MARKING WELL LOCATION

NE 1/4 SE 1/4, SECTION 6

FOR

TREND EXPLORATION LTD., DENVER, COLO.

Dated: 9 - 11 - 1972

Work Order No. 9 - 7 - A2

E. C. Lenhart
Certified true and correct, Surveyor

COLORADO REG. NO. 3659

72-748