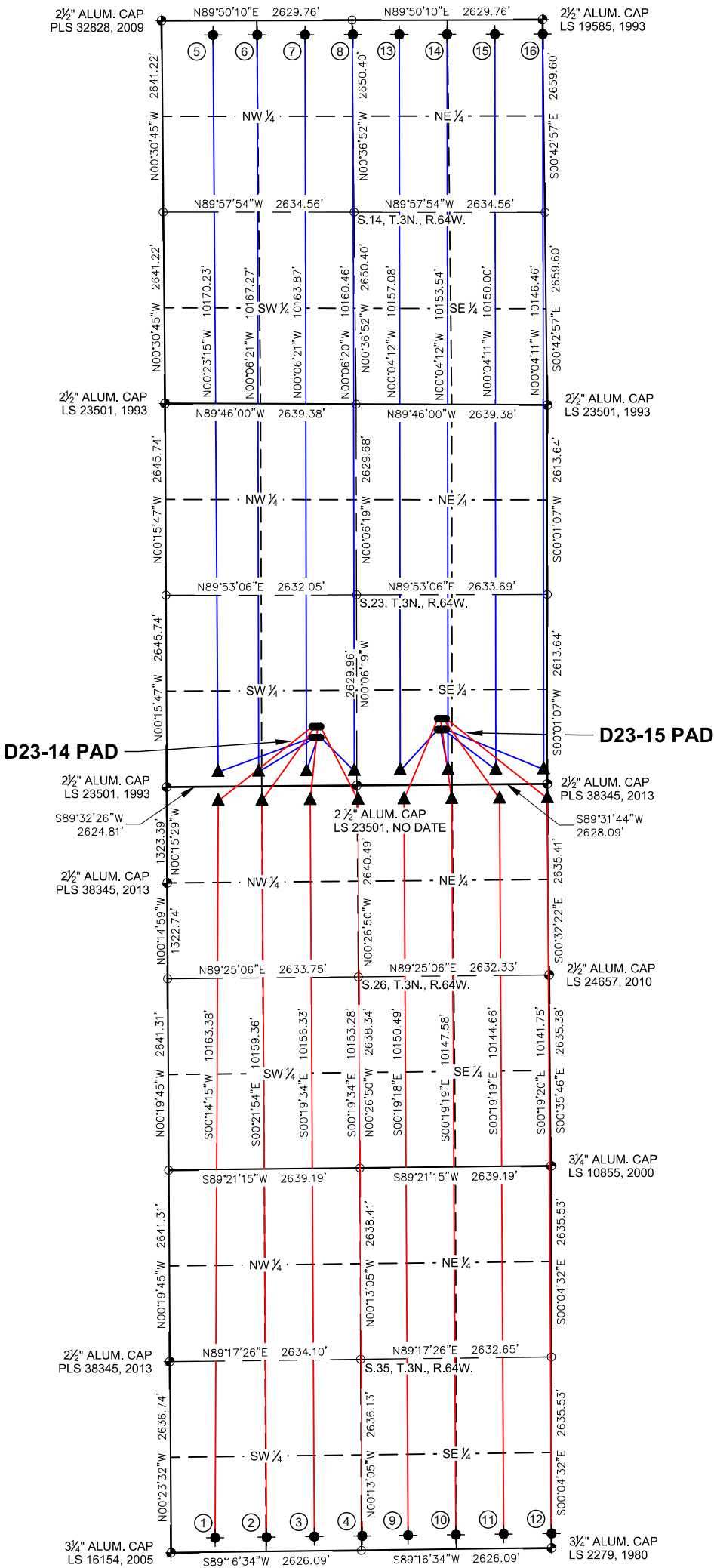
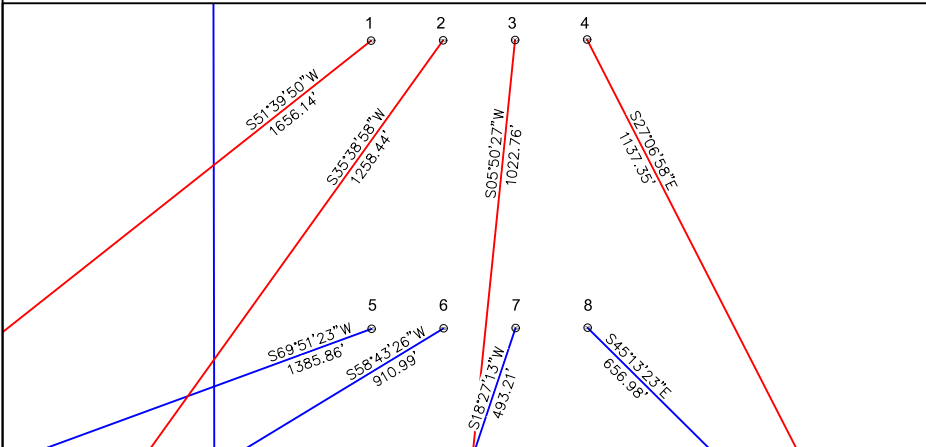


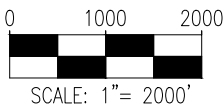
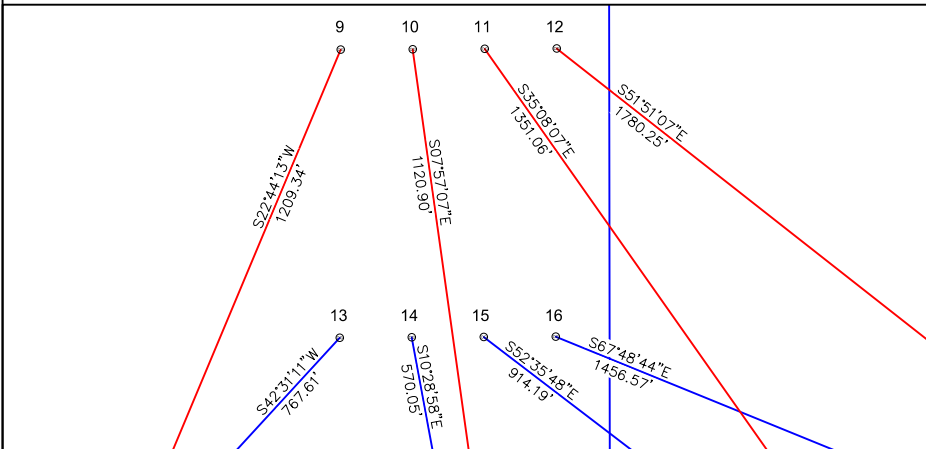
D23-14 PAD & D23-15 PAD  
MULTI-WELL LOCATION PLAT / MULTI-WELL PLAN  
T3N R64W SECTION 23



PROPOSED WELLBORE DIRECTION DATA  
D23-14 PAD  
SLOTS 1-8



PROPOSED WELLBORE DIRECTION DATA  
D23-15 PAD  
SLOTS 9-16



LEGEND

- FOUND MONUMENT
- CALCULATED POSITION
- PROPOSED WELL
- BOTTOM HOLE
- LANDING POINT

Notes:  
1) All bearings are Grid Bearings of the Colorado State Plane Coordinate System, North Zone, North American Datum 1983/2011. The lineal dimensions as shown herein are grid distances based upon the "U.S. Survey Foot." To get ground distances multiply shown distance by 1.000271913.  
2) Distances are measured at 90° from section line of the Sixth Principal Meridian, County of Weld, State of Colorado.  
3) Ground elevations are based on an observed GPS elevation (NAVD 1988 DATUM).  
4) Surface use: "RANGELAND"  
5) Instrument Operator: Ian Carabajal  
6) This map does not represent a boundary survey.

DISCLAIMER:  
THIS PLOT DOES NOT REPRESENT A MONUMENTED LAND SURVEY AND SHOULD NOT BE RELIED UPON TO DETERMINE BOUNDARY LINES, PROPERTY OWNERSHIP OR OTHER PROPERTY INTERESTS. PARCEL LINES, IF DEPICTED HAVE NOT BEEN FIELD VERIFIED AND MAY BE BASED UPON PUBLICLY AVAILABLE DATA THAT ALSO HAS NOT BEEN INDEPENDENTLY VERIFIED.

SURFACE HOLE LOCATION							TOP OF PRODUCTIVE ZONE		BOTTOM HOLE LOCATION	
SLOT	WELL NAME	LATITUDE	LONGITUDE	FOOTAGE		QTR-QTR	ELEV.	FOOTAGE		FOOTAGE
1	GUTTERSEN D35-780	40.20585°N	104.52077°W	817' FSL	2014' FWL	SESW	4829'	200' FNL	710' FWL	200' FSL 610' FWL
2	GUTTERSEN D35-770	40.20585°N	104.52063°W	817' FSL	2051' FWL	SESW	4828'	200' FNL	1313' FWL	200' FSL 1320' FWL
3	GUTTERSEN D35-760	40.20585°N	104.52050°W	817' FSL	2089' FWL	SESW	4829'	200' FNL	1980' FWL	200' FSL 1980' FWL
4	GUTTERSEN D35-750	40.20585°N	104.52036°W	816' FSL	2126' FWL	SESW	4831'	200' FNL	2640' FWL	200' FSL 2640' FWL
5	GUTTERSEN STATE D23-781	40.20544°N	104.52077°W	667' FSL	2013' FWL	SESW	4828'	200' FSL	710' FWL	200' FNL 710' FWL
6	GUTTERSEN STATE D23-771	40.20544°N	104.52064°W	667' FSL	2051' FWL	SESW	4827'	200' FSL	1270' FWL	200' FNL 1320' FWL
7	GUTTERSEN STATE D23-761	40.20544°N	104.52050°W	667' FSL	2088' FWL	SESW	4827'	200' FSL	1930' FWL	200' FNL 1980' FWL
8	GUTTERSEN STATE D23-751	40.20544°N	104.52037°W	666' FSL	2126' FWL	SESW	4829'	200' FSL	2590' FWL	200' FNL 2640' FWL
9	GUTTERSEN D35-740	40.20610°N	104.51456°W	911' FSL	1511' FEL	SWSE	4809'	200' FNL	1980' FEL	200' FSL 1980' FEL
10	GUTTERSEN D35-730	40.20610°N	104.51443°W	911' FSL	1473' FEL	SWSE	4809'	200' FNL	1320' FEL	200' FSL 1320' FEL
11	GUTTERSEN D35-720	40.20610°N	104.51429°W	911' FSL	1436' FEL	SWSE	4811'	200' FNL	660' FEL	200' FSL 660' FEL
12	GUTTERSEN STATE D35-790	40.20610°N	104.51416°W	911' FSL	1398' FEL	SWSE	4813'	200' FNL	0' FEL	200' FSL 0' FEL
13	GUTTERSEN STATE D23-741	40.20569°N	104.51457°W	761' FSL	1511' FEL	SWSE	4810'	200' FSL	2030' FEL	200' FNL 1980' FEL
14	GUTTERSEN STATE D23-731	40.20569°N	104.51443°W	761' FSL	1474' FEL	SWSE	4809'	200' FSL	1370' FEL	200' FNL 1320' FEL
15	GUTTERSEN STATE D23-721	40.20569°N	104.51430°W	761' FSL	1436' FEL	SWSE	4809'	200' FSL	710' FEL	200' FNL 660' FEL
16	GUTTERSEN D23-711	40.20569°N	104.51417°W	761' FSL	1399' FEL	SWSE	4810'	200' FSL	50' FEL	200' FNL 0' FEL

7535 Hilltop Circle  
Denver, CO 80221  
(303) 928-7128  
www.ascentgeomatics.com

FIELD DATE:  
08-02-18

DRAWN BY:  
MJE

DRAWING DATE:  
08-10-18

CHECKED BY:  
CLP

**SURFACE LOCATION:**  
SEC. 23, T3N, R64W, 6TH P.M.  
WELD COUNTY, COLORADO

PUBLICLY AVAILABLE DATA SOURCES HAVE NOT BEEN INDEPENDENTLY VERIFIED BY ASCENT.