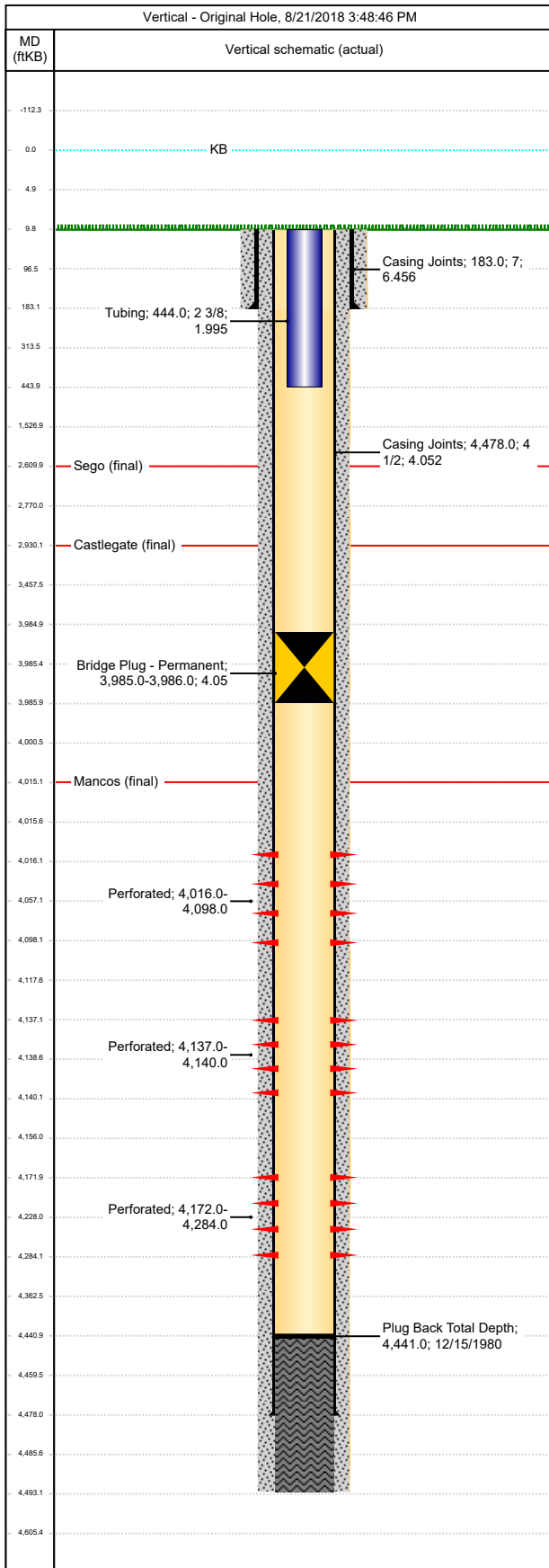




# UGC - Downhole Well Profile

Well Name: CATHEDRAL FEDERAL K-27-3-101-S

API/UWI 05103085870000	Surface Legal Location NESW-S27-T3S-R101W-6PM	Field Name Cathedral	License #	State/Province CO	Well Configuration Type Vertical
Original KB Elevation (ft) 7,966	KB-Tubing Head Distance (ft) 10	Spud Date 12/4/1980 00:00	Rig Release Date 12/15/1980 00:00	PBTD (All) (ftKB) Original Hole - 4,441.0	Total Depth All (TVD) (ftKB) Original Hole - 4,493.0



Casing Strings								
Casing Description Surface	OD (in) 7	Wt/Len (lb/ft) 20.00	String Grade	Top Connection	Set Depth (ftKB) 183.0			
Casing Components								
Item Description Casing Joints	Length (ft) 173	ID (in) 6.456	Joints 4	Drift (in) 6.331	P Collapse (psi) 2270	P Burst (psi) 3740		
Casing Description Production	OD (in) 4 1/2	Wt/Len (lb/ft) 10.50	String Grade	Top Connection	Set Depth (ftKB) 4,478.0			
Casing Components								
Item Description Casing Joints	Length (ft) 4468	ID (in) 4.052	Joints 104	Drift (in) 3.927	P Collapse (psi) 4010	P Burst (psi) 4790		
Perforations								
Date	Top (ftKB)	Btm (ftKB)	Shot Dens (shots/ft)	Entered Shot Total	Linked Zone			
7/28/1981	4016	4098	0.1	9	Mancos, Original Hole			
7/28/1981	4137	4140	0.7	2	Mancos, Original Hole			
7/28/1981	4172	4284	0.1	10	Mancos, Original Hole			
Tubing Strings								
Tubing Description Tubing - Production	Run Date 7/31/2018	String Length (ft) 434.00	Set Depth (ftKB) 444.0					
Item Des	Jts	OD (in)	Wt (lb/ft)	Grade	Len (ft)	P Burst (psi)	P Collapse (psi)	Tensile Max (1000lbf)
Tubing	14	2 3/8	4.70	J-55	434	7700	8100	85
Rod Strings								
Rod Des	Run Date	Len (ft)	Set Depth (ftKB)	Comment				
Item Des	Jts	OD (in)	Wt (lb/ft)	Grade	Len (ft)	Com		
Other In Hole								
Description Bridge Plug - Permanent	OD (in) 4.052	Top (ftKB) 3985	Run Date 7/31/2018	Pull Date	Comment			
Cement Stages								
Stg # 1	Description Surface Casing Cement	Top (ftKB) 10	Btm (ftKB) 183	Comment 80 sx RFC + 1/4 #/sx celloflake.				
Stg # 1	Description Production Casing Cement	Top (ftKB) 10	Btm (ftKB) 4493	Comment 80 sx Class "H" + 2% CaCl2 + 1/4 #/sx flocele.				
Stg # 1	Description Cement Plug	Top (ftKB) 4441	Btm (ftKB) 4493	Comment				