

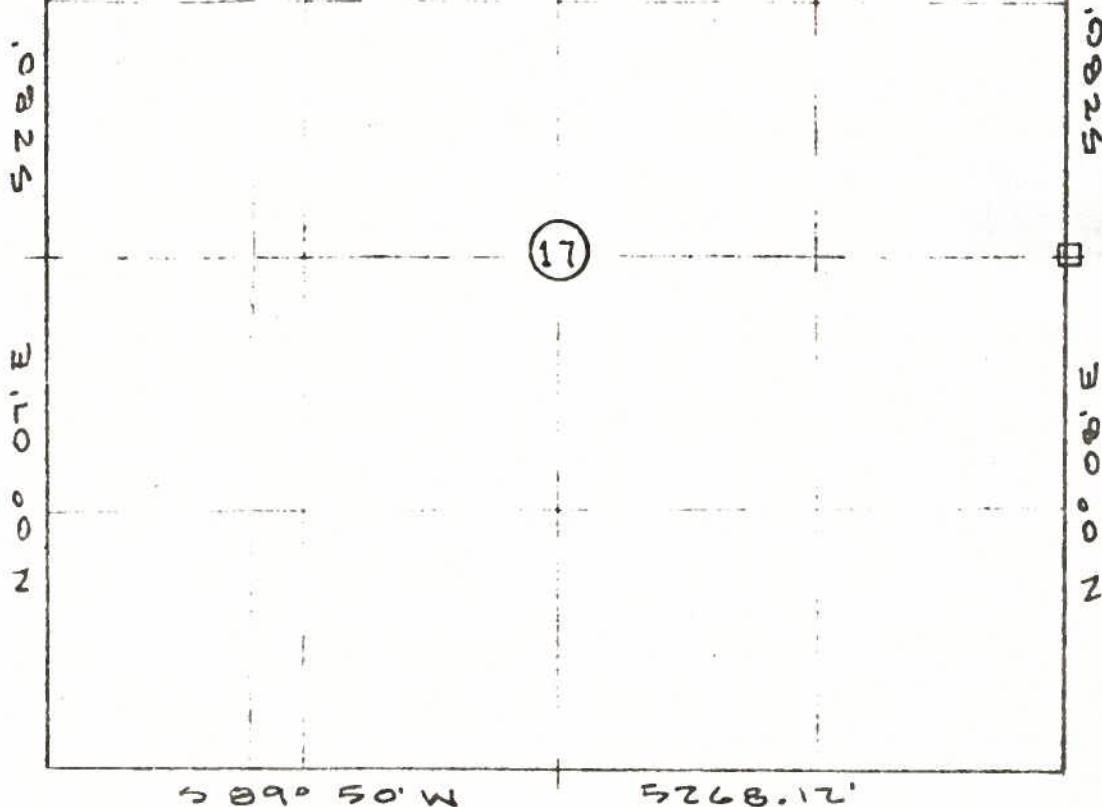


00244926

R 100 W  
S 84° 49' W 5269.44'

JUN 23 1976

GOLDEN OIL &amp; GAS CONS. CO.

MOVED LO  
75' N.W.TALAMANTES UNIT #1  
LOCATION EL=6440LOCATION MAPSCALE: 1" = 1000'CERTIFICATE OF SURVEYOR

MAP

SHOWING WELL LOCATION OF

SAMEDAN OIL COMPANY

TALAMANTES UNIT NO. 1

NE 1/4, NE 1/4 SECTION 17

T 11 N, R 100 W  
MOFFAT COUNTY  
COLORADOSTATE OF WYOMING )  
COUNTY OF SWEETWATER ) SSI, WAYNE L. JOHNSON, OF ROCK SPRINGS,  
WYOMING DO HEREBY CERTIFY THAT THIS  
MAP SHOWS CORRECTLY THE WELL LOCA-  
TION MADE FOR SAMEDAN OIL COMPANY  
ON APRIL 22, 1976.*Wayne L. Johnson*  
\_\_\_\_\_  
WYO. P.E. & L.S. NO. 159

76 544

EXHIBIT "A"