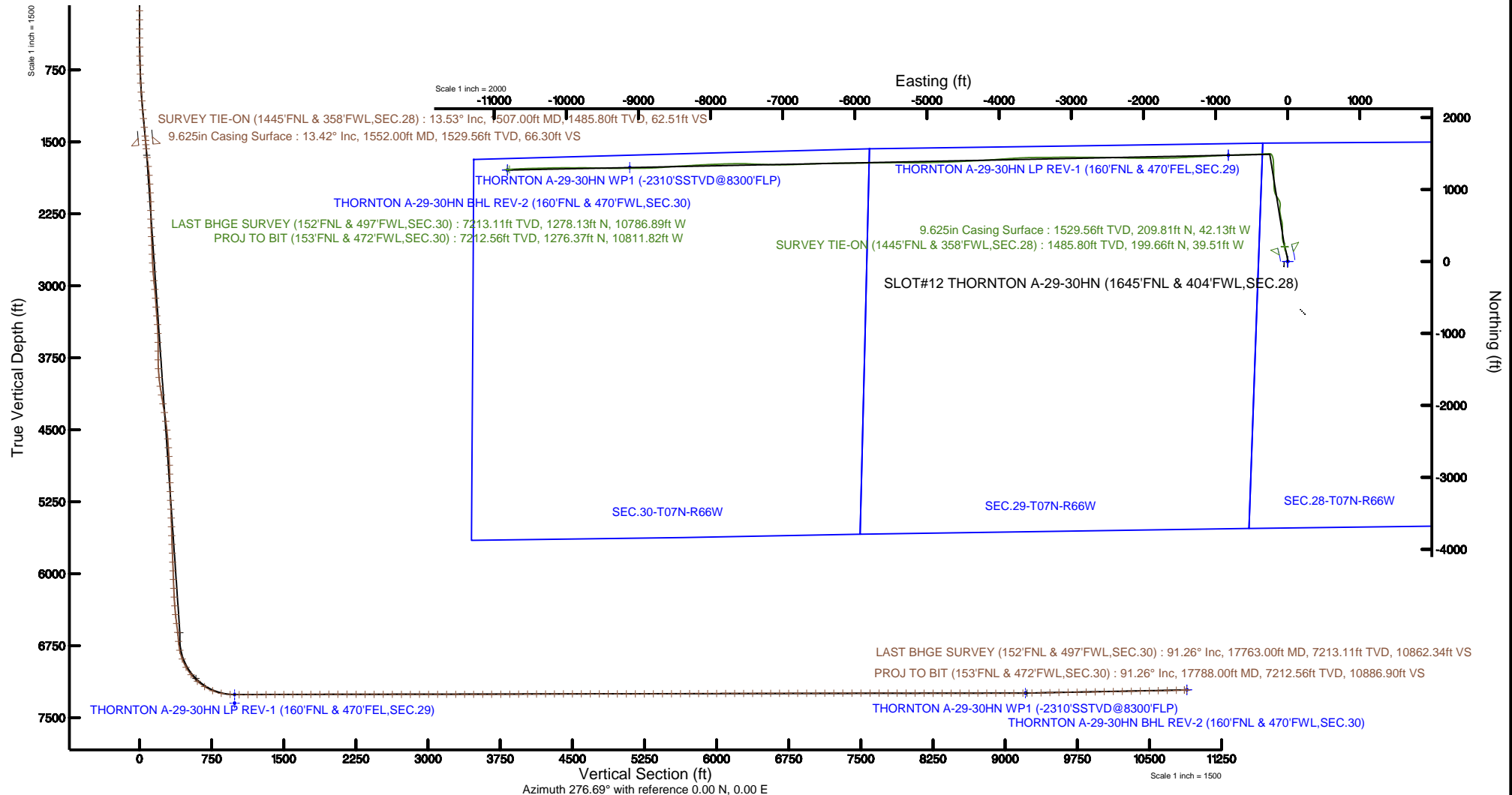


BAYSWATER E & P LLC

Location: COLORADO Slot: SLOT#12 THORNTON A-29-30HN (1645'FNL & 404'FWL,SEC.28)
 Field: WELD COUNTY (NAD83/TRUE NORTH) Well: THORNTON A-29-30HN
 Facility: SEC.28-T07N-R66W Wellbore: THORNTON A-29-30HN PWB



| | |
|----------------------------------------------------------------------------------------------------------|------------------------------------------------------------------------|
| Plot reference wellpath is THORNTON A-29-30HN PWP (REV-D.0) | Grid System: NAD83 / Lambert Colorado SP, Northern Zone (501), US feet |
| True vertical depths are referenced to TRUE 38 (4909'GL+25KB @ 4934'RKB) (RKB) | North Reference: True north |
| Measured depths are referenced to TRUE 38 (4909'GL+25KB @ 4934'RKB) (RKB) | Scale: True distance |
| TRUE 38 (4909'GL+25KB @ 4934'RKB) (RKB) to Mean Sea Level: 4934 feet | Depths are in feet |
| Mean Sea Level to Ground level (At Slot: SLOT#12 THORNTON A-29-30HN (1645'FNL & 404'FWL,SEC.28)): 0 feet | Created by: bushjarnh on 2018-08-29 |
| Coordinates are in feet referenced to Slot | Database: Denver |



Actual Wellpath Report

THORNTON A-29-30HN AWP

Page 1 of 10

| REFERENCE WELLPATH IDENTIFICATION | | | |
|-----------------------------------|--------------------------------|----------|--------------------------------------------------------|
| Operator | BAYSWATER E & P LLC | Slot | SLOT#12 THORNTON A-29-30HN (1645'FNL & 404'FWL,SEC.28) |
| Area | COLORADO | Well | THORNTON A-29-30HN |
| Field | WELD COUNTY (NAD83/TRUE NORTH) | Wellbore | THORNTON A-29-30HN AWB |
| Facility | SEC.28-T07N-R66W | | |

| REPORT SETUP INFORMATION | | | |
|--------------------------|-----------------------------------------------------------|----------------------|-----------------------------------|
| Projection System | NAD83 / Lambert Colorado SP, Northern Zone (501), US feet | Software System | WellArchitect® 5.1 |
| North Reference | True | User | Bushjamh |
| Scale | 0.999970 | Report Generated | 8/29/2018 at 5:55:39 PM |
| Convergence at slot | 0.46° East | Database/Source file | Denver/THORNTON_A-29-30HN_AWP.xml |

| WELLPATH LOCATION | | | | | | |
|-----------------------|-------------------|----------|------------------|-----------------|------------------------|-----------------|
| | Local coordinates | | Grid coordinates | | Geographic coordinates | |
| | North[ft] | East[ft] | Easting[US ft] | Northing[US ft] | Latitude | Longitude |
| Slot Location | -0.32 | 49.16 | 3196931.02 | 1443491.12 | 40°32'55.043"N | 104°47'28.867"W |
| Facility Reference Pt | | | 3196881.86 | 1443491.05 | 40°32'55.046"N | 104°47'29.504"W |
| Field Reference Pt | | | 3174587.00 | 1430859.71 | 40°30'51.890"N | 104°52'19.470"W |

| WELLPATH DATUM | | | |
|--------------------------|------------------------------------------|---------------------------------------------------------------------------------------------------------------------------|-------------------|
| Calculation method | Minimum curvature | TRUE 38 (4909'GL+25'KB @ 4934'RKB) (RKB) to Facility Vertical Datum | 4934.00ft |
| Horizontal Reference Pt | Slot | TRUE 38 (4909'GL+25'KB @ 4934'RKB) (RKB) to Mean Sea Level | 4934.00ft |
| Vertical Reference Pt | TRUE 38 (4909'GL+25'KB @ 4934'RKB) (RKB) | TRUE 38 (4909'GL+25'KB @ 4934'RKB) (RKB) to Ground Level at Slot (SLOT#12 THORNTON A-29-30HN (1645'FNL & 404'FWL,SEC.28)) | 4934.00ft |
| MD Reference Pt | TRUE 38 (4909'GL+25'KB @ 4934'RKB) (RKB) | Section Origin | N 0.00, E 0.00 ft |
| Field Vertical Reference | Mean Sea Level | Section Azimuth | 276.69° |

Actual Wellpath Report

THORNTON A-29-30HN AWP

Page 2 of 10

REFERENCE WELLPATH IDENTIFICATION

| | | | |
|----------|--------------------------------|----------|--------------------------------------------------------|
| Operator | BAYSWATER E & P LLC | Slot | SLOT#12 THORNTON A-29-30HN (1645'FNL & 404'FWL,SEC.28) |
| Area | COLORADO | Well | THORNTON A-29-30HN |
| Field | WELD COUNTY (NAD83/TRUE NORTH) | Wellbore | THORNTON A-29-30HN AWB |
| Facility | SEC.28-T07N-R66W | | |

WELLPATH DATA (191 stations) † = interpolated/extrapolated station

| MD [ft] | Inclination [°] | Azimuth [°] | TVD [ft] | Vert Sect [ft] | North [ft] | East [ft] | Latitude | Longitude | DLS [°/100ft] | Comments |
|------------|--------------------|----------------|-------------|-------------------|---------------|--------------|----------------|-----------------|------------------|-------------------------------------------|
| 0.00† | 0.000 | 7.400 | 0.00 | 0.00 | 0.00 | 0.00 | 40°32'55.043"N | 104°47'28.867"W | 0.00 | |
| 25.00 | 0.000 | 7.400 | 25.00 | 0.00 | 0.00 | 0.00 | 40°32'55.043"N | 104°47'28.867"W | 0.00 | |
| 134.00 | 0.160 | 7.400 | 134.00 | 0.00 | 0.15 | 0.02 | 40°32'55.044"N | 104°47'28.867"W | 0.15 | |
| 229.00 | 0.570 | 353.520 | 229.00 | 0.10 | 0.75 | -0.02 | 40°32'55.050"N | 104°47'28.867"W | 0.44 | |
| 324.00 | 1.430 | 357.210 | 323.98 | 0.41 | 2.41 | -0.13 | 40°32'55.067"N | 104°47'28.869"W | 0.91 | |
| 418.00 | 2.690 | 358.950 | 417.92 | 0.90 | 5.78 | -0.23 | 40°32'55.100"N | 104°47'28.870"W | 1.34 | |
| 513.00 | 4.080 | 353.460 | 512.75 | 1.97 | 11.37 | -0.65 | 40°32'55.155"N | 104°47'28.876"W | 1.50 | |
| 607.00 | 5.300 | 355.400 | 606.44 | 3.59 | 19.02 | -1.38 | 40°32'55.231"N | 104°47'28.885"W | 1.31 | |
| 702.00 | 6.790 | 352.630 | 700.90 | 5.81 | 28.96 | -2.45 | 40°32'55.329"N | 104°47'28.899"W | 1.60 | |
| 796.00 | 8.680 | 352.580 | 794.05 | 8.89 | 41.51 | -4.08 | 40°32'55.453"N | 104°47'28.920"W | 2.01 | |
| 891.00 | 10.040 | 350.430 | 887.78 | 12.96 | 56.78 | -6.38 | 40°32'55.604"N | 104°47'28.950"W | 1.48 | |
| 986.00 | 11.780 | 348.570 | 981.06 | 18.29 | 74.46 | -9.68 | 40°32'55.779"N | 104°47'28.993"W | 1.87 | |
| 1080.00 | 13.010 | 345.550 | 1072.87 | 25.10 | 94.11 | -14.22 | 40°32'55.973"N | 104°47'29.051"W | 1.48 | |
| 1175.00 | 14.390 | 346.660 | 1165.16 | 33.00 | 115.95 | -19.62 | 40°32'56.189"N | 104°47'29.121"W | 1.48 | |
| 1270.00 | 15.670 | 346.960 | 1256.91 | 41.37 | 139.94 | -25.24 | 40°32'56.426"N | 104°47'29.194"W | 1.35 | |
| 1365.00 | 15.570 | 346.530 | 1348.40 | 50.10 | 164.83 | -31.10 | 40°32'56.672"N | 104°47'29.270"W | 0.16 | |
| 1459.00 | 14.350 | 346.340 | 1439.21 | 58.50 | 188.42 | -36.79 | 40°32'56.905"N | 104°47'29.344"W | 1.30 | |
| 1507.00 | 13.530 | 346.490 | 1485.80 | 62.51 | 199.66 | -39.51 | 40°32'57.016"N | 104°47'29.379"W | 1.71 | SURVEY TIE-ON (1445'FNL & 358'FWL,SEC.28) |
| 1596.00 | 13.320 | 342.560 | 1572.37 | 70.30 | 219.57 | -45.01 | 40°32'57.212"N | 104°47'29.450"W | 1.05 | |
| 1690.00 | 14.480 | 339.740 | 1663.62 | 80.05 | 240.92 | -52.33 | 40°32'57.423"N | 104°47'29.545"W | 1.43 | |
| 1785.00 | 14.370 | 340.280 | 1755.62 | 90.68 | 263.16 | -60.42 | 40°32'57.643"N | 104°47'29.650"W | 0.18 | |
| 1880.00 | 14.150 | 348.580 | 1847.70 | 99.53 | 285.64 | -66.69 | 40°32'57.865"N | 104°47'29.731"W | 2.16 | |
| 1975.00 | 14.320 | 352.620 | 1939.79 | 106.00 | 308.68 | -70.50 | 40°32'58.093"N | 104°47'29.781"W | 1.06 | |
| 2069.00 | 14.300 | 354.590 | 2030.87 | 111.26 | 331.76 | -73.09 | 40°32'58.321"N | 104°47'29.814"W | 0.52 | |
| 2164.00 | 14.360 | 358.110 | 2122.92 | 115.48 | 355.22 | -74.59 | 40°32'58.553"N | 104°47'29.833"W | 0.92 | |
| 2258.00 | 14.340 | 3.690 | 2213.99 | 117.83 | 378.49 | -74.22 | 40°32'58.783"N | 104°47'29.829"W | 1.47 | |
| 2352.00 | 14.500 | 4.910 | 2305.03 | 118.81 | 401.83 | -72.46 | 40°32'59.013"N | 104°47'29.806"W | 0.37 | |
| 2446.00 | 14.700 | 356.680 | 2396.00 | 121.25 | 425.46 | -72.15 | 40°32'59.247"N | 104°47'29.802"W | 2.22 | |
| 2540.00 | 14.560 | 356.440 | 2486.96 | 125.42 | 449.16 | -73.57 | 40°32'59.481"N | 104°47'29.820"W | 0.16 | |
| 2635.00 | 14.620 | 0.130 | 2578.89 | 128.92 | 473.07 | -74.29 | 40°32'59.717"N | 104°47'29.830"W | 0.98 | |

Actual Wellpath Report

THORNTON A-29-30HN AWP

Page 3 of 10

REFERENCE WELLPATH IDENTIFICATION

| | | | |
|----------|--------------------------------|----------|---------------------------------------------------------|
| Operator | BAYSWATER E & P LLC | Slot | SLOT#12 THORNTON A-29-30HN (1645'FNL & 404'FWL, SEC.28) |
| Area | COLORADO | Well | THORNTON A-29-30HN |
| Field | WELD COUNTY (NAD83/TRUE NORTH) | Wellbore | THORNTON A-29-30HN AWB |
| Facility | SEC.28-T07N-R66W | | |

WELLPATH DATA (191 stations)

| MD [ft] | Inclination [°] | Azimuth [°] | TVD [ft] | Vert Sect [ft] | North [ft] | East [ft] | Latitude | Longitude | DLS [°/100ft] | Comments |
|------------|--------------------|----------------|-------------|-------------------|---------------|--------------|----------------|-----------------|------------------|----------|
| 2730.00 | 14.580 | 357.030 | 2670.83 | 132.30 | 497.00 | -74.88 | 40°32'59.954"N | 104°47'29.837"W | 0.82 | |
| 2824.00 | 14.470 | 356.110 | 2761.82 | 136.44 | 520.53 | -76.29 | 40°33'00.186"N | 104°47'29.855"W | 0.27 | |
| 2919.00 | 14.610 | 349.850 | 2853.79 | 142.09 | 544.17 | -79.21 | 40°33'00.420"N | 104°47'29.893"W | 1.66 | |
| 3014.00 | 14.550 | 343.710 | 2945.73 | 150.22 | 567.42 | -84.66 | 40°33'00.650"N | 104°47'29.964"W | 1.63 | |
| 3109.00 | 14.340 | 344.750 | 3037.73 | 159.28 | 590.22 | -91.11 | 40°33'00.875"N | 104°47'30.047"W | 0.35 | |
| 3203.00 | 14.230 | 350.240 | 3128.83 | 166.90 | 612.84 | -96.13 | 40°33'01.099"N | 104°47'30.112"W | 1.45 | |
| 3298.00 | 14.380 | 352.310 | 3220.88 | 173.14 | 636.04 | -99.68 | 40°33'01.328"N | 104°47'30.159"W | 0.56 | |
| 3392.00 | 14.320 | 348.050 | 3311.95 | 179.75 | 658.98 | -103.65 | 40°33'01.554"N | 104°47'30.210"W | 1.12 | |
| 3487.00 | 13.960 | 350.680 | 3404.08 | 186.67 | 681.78 | -107.94 | 40°33'01.780"N | 104°47'30.266"W | 0.78 | |
| 3582.00 | 13.970 | 358.890 | 3496.28 | 191.39 | 704.56 | -110.02 | 40°33'02.005"N | 104°47'30.292"W | 2.08 | |
| 3677.00 | 14.220 | 3.890 | 3588.42 | 193.52 | 727.66 | -109.45 | 40°33'02.233"N | 104°47'30.285"W | 1.31 | |
| 3772.00 | 14.400 | 7.700 | 3680.47 | 193.88 | 751.01 | -107.08 | 40°33'02.464"N | 104°47'30.254"W | 1.01 | |
| 3866.00 | 14.330 | 4.870 | 3771.54 | 194.04 | 774.19 | -104.52 | 40°33'02.693"N | 104°47'30.221"W | 0.75 | |
| 3961.00 | 14.520 | 356.000 | 3863.55 | 196.63 | 797.78 | -104.36 | 40°33'02.926"N | 104°47'30.219"W | 2.33 | |
| 4056.00 | 14.920 | 343.760 | 3955.46 | 203.61 | 821.41 | -108.61 | 40°33'03.159"N | 104°47'30.274"W | 3.29 | |
| 4150.00 | 14.900 | 333.960 | 4046.31 | 214.86 | 843.89 | -117.30 | 40°33'03.382"N | 104°47'30.387"W | 2.68 | |
| 4245.00 | 14.840 | 328.180 | 4138.13 | 229.04 | 865.20 | -129.08 | 40°33'03.592"N | 104°47'30.539"W | 1.56 | |
| 4339.00 | 14.500 | 326.050 | 4229.07 | 244.20 | 885.20 | -141.99 | 40°33'03.790"N | 104°47'30.707"W | 0.68 | |
| 4434.00 | 14.560 | 328.960 | 4321.03 | 259.25 | 905.29 | -154.79 | 40°33'03.988"N | 104°47'30.872"W | 0.77 | |
| 4528.00 | 14.620 | 333.790 | 4412.00 | 272.93 | 926.06 | -166.13 | 40°33'04.194"N | 104°47'31.019"W | 1.30 | |
| 4622.00 | 14.620 | 342.030 | 4502.97 | 284.33 | 947.99 | -175.03 | 40°33'04.410"N | 104°47'31.135"W | 2.21 | |
| 4717.00 | 14.580 | 346.920 | 4594.90 | 293.37 | 971.04 | -181.43 | 40°33'04.638"N | 104°47'31.218"W | 1.30 | |
| 4812.00 | 14.680 | 352.590 | 4686.83 | 300.35 | 994.63 | -185.69 | 40°33'04.871"N | 104°47'31.273"W | 1.51 | |
| 4906.00 | 14.680 | 353.580 | 4777.76 | 305.96 | 1018.28 | -188.56 | 40°33'05.105"N | 104°47'31.310"W | 0.27 | |
| 5001.00 | 14.720 | 359.690 | 4869.66 | 310.16 | 1042.31 | -189.97 | 40°33'05.342"N | 104°47'31.328"W | 1.63 | |
| 5096.00 | 14.560 | 358.430 | 4961.57 | 313.35 | 1066.31 | -190.36 | 40°33'05.579"N | 104°47'31.333"W | 0.38 | |
| 5190.00 | 14.770 | 0.840 | 5052.51 | 316.27 | 1090.11 | -190.51 | 40°33'05.815"N | 104°47'31.335"W | 0.69 | |
| 5285.00 | 14.780 | 357.960 | 5144.37 | 319.34 | 1114.33 | -190.76 | 40°33'06.054"N | 104°47'31.338"W | 0.77 | |
| 5380.00 | 14.690 | 356.980 | 5236.25 | 323.21 | 1138.46 | -191.83 | 40°33'06.292"N | 104°47'31.352"W | 0.28 | |
| 5475.00 | 14.530 | 359.470 | 5328.18 | 326.75 | 1162.41 | -192.58 | 40°33'06.529"N | 104°47'31.362"W | 0.68 | |

Actual Wellpath Report

THORNTON A-29-30HN AWP

Page 4 of 10

REFERENCE WELLPATH IDENTIFICATION

| | | | |
|----------|--------------------------------|----------|---------------------------------------------------------|
| Operator | BAYSWATER E & P LLC | Slot | SLOT#12 THORNTON A-29-30HN (1645'FNL & 404'FWL, SEC.28) |
| Area | COLORADO | Well | THORNTON A-29-30HN |
| Field | WELD COUNTY (NAD83/TRUE NORTH) | Wellbore | THORNTON A-29-30HN AWB |
| Facility | SEC.28-T07N-R66W | | |

WELLPATH DATA (191 stations)

| MD [ft] | Inclination [°] | Azimuth [°] | TVD [ft] | Vert Sect [ft] | North [ft] | East [ft] | Latitude | Longitude | DLS [°/100ft] | Comments |
|------------|--------------------|----------------|-------------|-------------------|---------------|--------------|----------------|-----------------|------------------|----------|
| 5569.00 | 14.490 | 358.960 | 5419.18 | 329.81 | 1185.96 | -192.90 | 40°33'06.762"N | 104°47'31.366"W | 0.14 | |
| 5664.00 | 14.340 | 359.940 | 5511.19 | 332.79 | 1209.61 | -193.13 | 40°33'06.995"N | 104°47'31.369"W | 0.30 | |
| 5759.00 | 13.960 | 0.270 | 5603.30 | 335.46 | 1232.83 | -193.08 | 40°33'07.225"N | 104°47'31.369"W | 0.41 | |
| 5853.00 | 14.410 | 357.470 | 5694.44 | 338.60 | 1255.85 | -193.55 | 40°33'07.452"N | 104°47'31.375"W | 0.87 | |
| 5948.00 | 14.090 | 358.390 | 5786.52 | 342.17 | 1279.22 | -194.39 | 40°33'07.683"N | 104°47'31.385"W | 0.41 | |
| 6043.00 | 14.930 | 356.920 | 5878.49 | 345.91 | 1303.00 | -195.38 | 40°33'07.918"N | 104°47'31.398"W | 0.97 | |
| 6137.00 | 14.280 | 358.360 | 5969.45 | 349.65 | 1326.68 | -196.36 | 40°33'08.152"N | 104°47'31.411"W | 0.79 | |
| 6231.00 | 14.830 | 359.200 | 6060.43 | 352.90 | 1350.30 | -196.86 | 40°33'08.386"N | 104°47'31.417"W | 0.63 | |
| 6326.00 | 14.720 | 357.290 | 6152.29 | 356.46 | 1374.51 | -197.60 | 40°33'08.625"N | 104°47'31.427"W | 0.53 | |
| 6421.00 | 14.710 | 354.700 | 6244.18 | 360.93 | 1398.58 | -199.28 | 40°33'08.863"N | 104°47'31.449"W | 0.69 | |
| 6515.00 | 14.850 | 350.550 | 6335.07 | 366.76 | 1422.34 | -202.36 | 40°33'09.098"N | 104°47'31.489"W | 1.14 | |
| 6610.00 | 15.000 | 344.140 | 6426.87 | 374.86 | 1446.18 | -207.72 | 40°33'09.333"N | 104°47'31.558"W | 1.74 | |
| 6705.00 | 14.790 | 336.430 | 6518.69 | 385.69 | 1469.12 | -215.93 | 40°33'09.560"N | 104°47'31.665"W | 2.10 | |
| 6800.00 | 8.920 | 320.110 | 6611.64 | 397.17 | 1485.91 | -225.52 | 40°33'09.726"N | 104°47'31.789"W | 7.06 | |
| 6894.00 | 4.430 | 297.030 | 6705.00 | 405.87 | 1493.15 | -233.43 | 40°33'09.797"N | 104°47'31.891"W | 5.47 | |
| 6988.00 | 11.480 | 275.280 | 6798.05 | 418.64 | 1495.67 | -245.99 | 40°33'09.822"N | 104°47'32.054"W | 8.03 | |
| 7083.00 | 20.460 | 268.090 | 6889.30 | 444.57 | 1495.99 | -272.06 | 40°33'09.825"N | 104°47'32.392"W | 9.66 | |
| 7178.00 | 29.560 | 266.860 | 6975.30 | 484.16 | 1494.14 | -312.14 | 40°33'09.807"N | 104°47'32.911"W | 9.59 | |
| 7272.00 | 39.200 | 266.980 | 7052.79 | 536.40 | 1491.30 | -365.08 | 40°33'09.779"N | 104°47'33.597"W | 10.26 | |
| 7367.00 | 48.970 | 267.780 | 7120.95 | 601.55 | 1488.33 | -431.02 | 40°33'09.749"N | 104°47'34.451"W | 10.30 | |
| 7461.00 | 58.140 | 267.880 | 7176.73 | 676.19 | 1485.47 | -506.50 | 40°33'09.721"N | 104°47'35.429"W | 9.76 | |
| 7556.00 | 68.710 | 267.520 | 7219.17 | 759.99 | 1482.05 | -591.28 | 40°33'09.687"N | 104°47'36.527"W | 11.13 | |
| 7651.00 | 78.380 | 268.370 | 7246.05 | 849.93 | 1478.81 | -682.22 | 40°33'09.655"N | 104°47'37.705"W | 10.21 | |
| 7745.00 | 86.860 | 268.590 | 7258.11 | 942.11 | 1476.34 | -775.32 | 40°33'09.631"N | 104°47'38.911"W | 9.02 | |
| 7840.00 | 89.780 | 268.200 | 7260.90 | 1036.07 | 1473.68 | -870.23 | 40°33'09.605"N | 104°47'40.141"W | 3.10 | |
| 7934.00 | 90.280 | 267.120 | 7260.85 | 1128.90 | 1469.84 | -964.15 | 40°33'09.567"N | 104°47'41.358"W | 1.27 | |
| 8029.00 | 90.340 | 266.630 | 7260.33 | 1222.50 | 1464.66 | -1059.01 | 40°33'09.515"N | 104°47'42.586"W | 0.52 | |
| 8123.00 | 90.460 | 266.590 | 7259.68 | 1315.05 | 1459.10 | -1152.84 | 40°33'09.460"N | 104°47'43.802"W | 0.13 | |
| 8217.00 | 90.400 | 267.270 | 7258.97 | 1407.69 | 1454.07 | -1246.71 | 40°33'09.411"N | 104°47'45.018"W | 0.73 | |
| 8311.00 | 90.400 | 266.830 | 7258.31 | 1500.36 | 1449.23 | -1340.58 | 40°33'09.363"N | 104°47'46.234"W | 0.47 | |

Actual Wellpath Report

THORNTON A-29-30HN AWP

Page 5 of 10

REFERENCE WELLPATH IDENTIFICATION

| | | | |
|----------|--------------------------------|----------|---------------------------------------------------------|
| Operator | BAYSWATER E & P LLC | Slot | SLOT#12 THORNTON A-29-30HN (1645'FNL & 404'FWL, SEC.28) |
| Area | COLORADO | Well | THORNTON A-29-30HN |
| Field | WELD COUNTY (NAD83/TRUE NORTH) | Wellbore | THORNTON A-29-30HN AWB |
| Facility | SEC.28-T07N-R66W | | |

WELLPATH DATA (191 stations)

| MD [ft] | Inclination [°] | Azimuth [°] | TVD [ft] | Vert Sect [ft] | North [ft] | East [ft] | Latitude | Longitude | DLS [°/100ft] | Comments |
|------------|--------------------|----------------|-------------|-------------------|---------------|--------------|----------------|-----------------|------------------|----------|
| 8406.00 | 90.150 | 267.300 | 7257.86 | 1594.02 | 1444.37 | -1435.45 | 40°33'09.315"N | 104°47'47.463"W | 0.56 | |
| 8501.00 | 90.180 | 267.950 | 7257.58 | 1687.83 | 1440.43 | -1530.37 | 40°33'09.276"N | 104°47'48.693"W | 0.68 | |
| 8595.00 | 90.280 | 268.740 | 7257.21 | 1780.83 | 1437.72 | -1624.33 | 40°33'09.249"N | 104°47'49.910"W | 0.85 | |
| 8690.00 | 90.280 | 268.810 | 7256.74 | 1874.92 | 1435.68 | -1719.31 | 40°33'09.229"N | 104°47'51.140"W | 0.07 | |
| 8784.00 | 90.340 | 270.160 | 7256.23 | 1968.18 | 1434.84 | -1813.30 | 40°33'09.220"N | 104°47'52.358"W | 1.44 | |
| 8879.00 | 89.850 | 270.110 | 7256.08 | 2062.55 | 1435.06 | -1908.30 | 40°33'09.222"N | 104°47'53.589"W | 0.52 | |
| 8974.00 | 89.820 | 270.040 | 7256.35 | 2156.92 | 1435.19 | -2003.30 | 40°33'09.224"N | 104°47'54.819"W | 0.08 | |
| 9069.00 | 89.600 | 270.510 | 7256.83 | 2251.32 | 1435.64 | -2098.30 | 40°33'09.228"N | 104°47'56.050"W | 0.55 | |
| 9164.00 | 90.060 | 271.030 | 7257.11 | 2345.82 | 1436.92 | -2193.29 | 40°33'09.241"N | 104°47'57.280"W | 0.73 | |
| 9258.00 | 90.090 | 272.150 | 7256.99 | 2439.44 | 1439.53 | -2287.25 | 40°33'09.266"N | 104°47'58.498"W | 1.19 | |
| 9353.00 | 90.120 | 270.950 | 7256.82 | 2534.06 | 1442.10 | -2382.21 | 40°33'09.292"N | 104°47'59.728"W | 1.26 | |
| 9448.00 | 89.880 | 270.440 | 7256.82 | 2628.54 | 1443.25 | -2477.20 | 40°33'09.303"N | 104°48'00.959"W | 0.59 | |
| 9543.00 | 89.910 | 270.830 | 7256.99 | 2723.01 | 1444.30 | -2572.20 | 40°33'09.313"N | 104°48'02.189"W | 0.41 | |
| 9637.00 | 90.120 | 270.700 | 7256.97 | 2816.50 | 1445.56 | -2666.19 | 40°33'09.325"N | 104°48'03.407"W | 0.26 | |
| 9732.00 | 90.280 | 270.190 | 7256.63 | 2910.94 | 1446.30 | -2761.19 | 40°33'09.333"N | 104°48'04.637"W | 0.56 | |
| 9827.00 | 89.970 | 270.260 | 7256.43 | 3005.33 | 1446.67 | -2856.19 | 40°33'09.336"N | 104°48'05.868"W | 0.33 | |
| 9921.00 | 90.030 | 270.730 | 7256.43 | 3098.78 | 1447.48 | -2950.18 | 40°33'09.344"N | 104°48'07.086"W | 0.50 | |
| 10016.00 | 89.820 | 269.820 | 7256.55 | 3193.19 | 1447.94 | -3045.18 | 40°33'09.349"N | 104°48'08.316"W | 0.98 | |
| 10111.00 | 90.030 | 269.680 | 7256.68 | 3287.49 | 1447.52 | -3140.18 | 40°33'09.344"N | 104°48'09.547"W | 0.27 | |
| 10205.00 | 89.910 | 268.750 | 7256.72 | 3380.69 | 1446.23 | -3234.17 | 40°33'09.331"N | 104°48'10.765"W | 1.00 | |
| 10299.00 | 90.000 | 270.320 | 7256.80 | 3473.95 | 1445.47 | -3328.16 | 40°33'09.324"N | 104°48'11.982"W | 1.67 | |
| 10394.00 | 90.150 | 269.080 | 7256.67 | 3568.24 | 1444.97 | -3423.16 | 40°33'09.319"N | 104°48'13.213"W | 1.31 | |
| 10488.00 | 90.340 | 269.680 | 7256.27 | 3661.48 | 1443.96 | -3517.15 | 40°33'09.309"N | 104°48'14.431"W | 0.67 | |
| 10583.00 | 90.180 | 267.790 | 7255.84 | 3755.56 | 1441.86 | -3612.12 | 40°33'09.288"N | 104°48'15.661"W | 2.00 | |
| 10678.00 | 90.400 | 267.350 | 7255.36 | 3849.36 | 1437.83 | -3707.04 | 40°33'09.248"N | 104°48'16.891"W | 0.52 | |
| 10772.00 | 90.370 | 266.220 | 7254.73 | 3941.95 | 1432.56 | -3800.88 | 40°33'09.196"N | 104°48'18.106"W | 1.20 | |
| 10866.00 | 90.310 | 266.240 | 7254.17 | 4034.38 | 1426.38 | -3894.68 | 40°33'09.134"N | 104°48'19.321"W | 0.07 | |
| 10961.00 | 90.340 | 266.160 | 7253.63 | 4127.79 | 1420.08 | -3989.47 | 40°33'09.072"N | 104°48'20.549"W | 0.09 | |
| 11056.00 | 90.310 | 265.420 | 7253.09 | 4221.08 | 1413.11 | -4084.21 | 40°33'09.003"N | 104°48'21.777"W | 0.78 | |
| 11150.00 | 90.220 | 266.570 | 7252.66 | 4313.44 | 1406.55 | -4177.98 | 40°33'08.938"N | 104°48'22.991"W | 1.23 | |

Actual Wellpath Report

THORNTON A-29-30HN AWP

Page 6 of 10

REFERENCE WELLPATH IDENTIFICATION

| | | | |
|----------|--------------------------------|----------|---------------------------------------------------------|
| Operator | BAYSWATER E & P LLC | Slot | SLOT#12 THORNTON A-29-30HN (1645'FNL & 404'FWL, SEC.28) |
| Area | COLORADO | Well | THORNTON A-29-30HN |
| Field | WELD COUNTY (NAD83/TRUE NORTH) | Wellbore | THORNTON A-29-30HN AWB |
| Facility | SEC.28-T07N-R66W | | |

WELLPATH DATA (191 stations)

| MD [ft] | Inclination [°] | Azimuth [°] | TVD [ft] | Vert Sect [ft] | North [ft] | East [ft] | Latitude | Longitude | DLS [°/100ft] | Comments |
|------------|--------------------|----------------|-------------|-------------------|---------------|--------------|----------------|-----------------|------------------|----------|
| 11245.00 | 90.180 | 267.300 | 7252.33 | 4407.07 | 1401.47 | -4272.84 | 40°33'08.888"N | 104°48'24.220"W | 0.77 | |
| 11340.00 | 90.180 | 267.060 | 7252.03 | 4500.76 | 1396.79 | -4367.73 | 40°33'08.841"N | 104°48'25.449"W | 0.25 | |
| 11434.00 | 90.060 | 267.500 | 7251.83 | 4593.49 | 1392.33 | -4461.62 | 40°33'08.797"N | 104°48'26.666"W | 0.49 | |
| 11529.00 | 89.940 | 266.970 | 7251.83 | 4687.20 | 1387.75 | -4556.51 | 40°33'08.752"N | 104°48'27.895"W | 0.57 | |
| 11623.00 | 89.850 | 267.870 | 7252.00 | 4779.97 | 1383.52 | -4650.41 | 40°33'08.710"N | 104°48'29.112"W | 0.96 | |
| 11717.00 | 89.970 | 267.680 | 7252.15 | 4872.83 | 1379.87 | -4744.34 | 40°33'08.673"N | 104°48'30.328"W | 0.24 | |
| 11813.00 | 89.940 | 269.150 | 7252.23 | 4967.83 | 1377.21 | -4840.30 | 40°33'08.647"N | 104°48'31.571"W | 1.53 | |
| 11907.00 | 89.940 | 268.910 | 7252.32 | 5060.99 | 1375.62 | -4934.29 | 40°33'08.631"N | 104°48'32.789"W | 0.26 | |
| 12002.00 | 90.030 | 268.650 | 7252.35 | 5155.09 | 1373.60 | -5029.27 | 40°33'08.611"N | 104°48'34.019"W | 0.29 | |
| 12096.00 | 90.340 | 269.610 | 7252.05 | 5248.27 | 1372.17 | -5123.25 | 40°33'08.596"N | 104°48'35.237"W | 1.07 | |
| 12191.00 | 90.180 | 270.070 | 7251.61 | 5342.59 | 1371.91 | -5218.25 | 40°33'08.594"N | 104°48'36.468"W | 0.51 | |
| 12286.00 | 90.250 | 270.360 | 7251.26 | 5436.98 | 1372.26 | -5313.25 | 40°33'08.597"N | 104°48'37.698"W | 0.31 | |
| 12380.00 | 90.370 | 269.940 | 7250.75 | 5530.37 | 1372.51 | -5407.25 | 40°33'08.599"N | 104°48'38.916"W | 0.46 | |
| 12475.00 | 90.340 | 269.710 | 7250.16 | 5624.68 | 1372.22 | -5502.25 | 40°33'08.596"N | 104°48'40.147"W | 0.24 | |
| 12570.00 | 90.280 | 269.470 | 7249.65 | 5718.95 | 1371.54 | -5597.24 | 40°33'08.589"N | 104°48'41.377"W | 0.26 | |
| 12664.00 | 90.150 | 269.330 | 7249.29 | 5812.19 | 1370.55 | -5691.24 | 40°33'08.579"N | 104°48'42.595"W | 0.20 | |
| 12759.00 | 90.250 | 269.000 | 7248.96 | 5906.37 | 1369.17 | -5786.23 | 40°33'08.565"N | 104°48'43.826"W | 0.36 | |
| 12853.00 | 90.150 | 268.690 | 7248.63 | 5999.49 | 1367.27 | -5880.21 | 40°33'08.546"N | 104°48'45.043"W | 0.35 | |
| 12948.00 | 90.220 | 269.480 | 7248.33 | 6093.65 | 1365.76 | -5975.19 | 40°33'08.531"N | 104°48'46.274"W | 0.83 | |
| 13042.00 | 90.180 | 269.500 | 7248.00 | 6186.91 | 1364.92 | -6069.19 | 40°33'08.523"N | 104°48'47.491"W | 0.05 | |
| 13137.00 | 90.060 | 270.390 | 7247.80 | 6281.25 | 1364.83 | -6164.19 | 40°33'08.522"N | 104°48'48.722"W | 0.95 | |
| 13231.00 | 90.430 | 269.580 | 7247.40 | 6374.61 | 1364.81 | -6258.19 | 40°33'08.521"N | 104°48'49.940"W | 0.95 | |
| 13325.00 | 90.150 | 268.610 | 7246.92 | 6467.78 | 1363.32 | -6352.17 | 40°33'08.506"N | 104°48'51.157"W | 1.07 | |
| 13420.00 | 90.340 | 268.320 | 7246.52 | 6561.80 | 1360.78 | -6447.14 | 40°33'08.481"N | 104°48'52.387"W | 0.36 | |
| 13514.00 | 89.850 | 267.310 | 7246.36 | 6654.67 | 1357.19 | -6541.07 | 40°33'08.445"N | 104°48'53.604"W | 1.19 | |
| 13609.00 | 90.030 | 267.690 | 7246.46 | 6748.45 | 1353.05 | -6635.98 | 40°33'08.404"N | 104°48'54.834"W | 0.44 | |
| 13704.00 | 90.120 | 267.990 | 7246.34 | 6842.32 | 1349.47 | -6730.91 | 40°33'08.368"N | 104°48'56.063"W | 0.33 | |
| 13799.00 | 89.940 | 268.030 | 7246.29 | 6936.23 | 1346.17 | -6825.85 | 40°33'08.335"N | 104°48'57.293"W | 0.19 | |
| 13894.00 | 90.250 | 268.930 | 7246.13 | 7030.25 | 1343.65 | -6920.82 | 40°33'08.310"N | 104°48'58.524"W | 1.00 | |
| 13989.00 | 90.310 | 269.550 | 7245.66 | 7124.45 | 1342.39 | -7015.81 | 40°33'08.298"N | 104°48'59.754"W | 0.66 | |

Actual Wellpath Report

THORNTON A-29-30HN AWP

Page 7 of 10

REFERENCE WELLPATH IDENTIFICATION

| | | | |
|----------|--------------------------------|----------|---------------------------------------------------------|
| Operator | BAYSWATER E & P LLC | Slot | SLOT#12 THORNTON A-29-30HN (1645'FNL & 404'FWL, SEC.28) |
| Area | COLORADO | Well | THORNTON A-29-30HN |
| Field | WELD COUNTY (NAD83/TRUE NORTH) | Wellbore | THORNTON A-29-30HN AWB |
| Facility | SEC.28-T07N-R66W | | |

WELLPATH DATA (191 stations)

| MD [ft] | Inclination [°] | Azimuth [°] | TVD [ft] | Vert Sect [ft] | North [ft] | East [ft] | Latitude | Longitude | DLS [°/100ft] | Comments |
|------------|--------------------|----------------|-------------|-------------------|---------------|--------------|----------------|-----------------|------------------|----------|
| 14083.00 | 90.180 | 270.870 | 7245.26 | 7217.85 | 1342.73 | -7109.80 | 40°33'08.301"N | 104°49'00.972"W | 1.41 | |
| 14178.00 | 90.120 | 272.390 | 7245.01 | 7312.47 | 1345.44 | -7204.76 | 40°33'08.327"N | 104°49'02.202"W | 1.60 | |
| 14272.00 | 90.060 | 271.530 | 7244.87 | 7406.15 | 1348.65 | -7298.71 | 40°33'08.359"N | 104°49'03.419"W | 0.92 | |
| 14367.00 | 89.970 | 272.510 | 7244.84 | 7500.83 | 1352.00 | -7393.64 | 40°33'08.391"N | 104°49'04.649"W | 1.04 | |
| 14462.00 | 90.220 | 272.940 | 7244.68 | 7595.60 | 1356.52 | -7488.54 | 40°33'08.436"N | 104°49'05.878"W | 0.52 | |
| 14556.00 | 90.000 | 269.700 | 7244.50 | 7689.18 | 1358.68 | -7582.50 | 40°33'08.457"N | 104°49'07.096"W | 3.45 | |
| 14650.00 | 89.880 | 268.850 | 7244.60 | 7782.39 | 1357.49 | -7676.49 | 40°33'08.445"N | 104°49'08.313"W | 0.91 | |
| 14745.00 | 89.970 | 268.590 | 7244.73 | 7876.47 | 1355.37 | -7771.47 | 40°33'08.424"N | 104°49'09.544"W | 0.29 | |
| 14839.00 | 89.850 | 267.650 | 7244.87 | 7969.42 | 1352.29 | -7865.42 | 40°33'08.393"N | 104°49'10.761"W | 1.01 | |
| 14934.00 | 89.780 | 268.150 | 7245.18 | 8063.30 | 1348.80 | -7960.35 | 40°33'08.358"N | 104°49'11.990"W | 0.53 | |
| 15029.00 | 89.850 | 266.930 | 7245.49 | 8157.09 | 1344.73 | -8055.26 | 40°33'08.318"N | 104°49'13.220"W | 1.29 | |
| 15124.00 | 89.910 | 267.080 | 7245.69 | 8250.74 | 1339.76 | -8150.13 | 40°33'08.268"N | 104°49'14.449"W | 0.17 | |
| 15219.00 | 90.310 | 266.000 | 7245.50 | 8344.25 | 1334.03 | -8244.96 | 40°33'08.211"N | 104°49'15.677"W | 1.21 | |
| 15314.00 | 90.090 | 267.420 | 7245.17 | 8437.81 | 1328.58 | -8339.80 | 40°33'08.157"N | 104°49'16.906"W | 1.51 | |
| 15408.00 | 90.030 | 267.210 | 7245.07 | 8530.55 | 1324.17 | -8433.69 | 40°33'08.113"N | 104°49'18.122"W | 0.23 | |
| 15503.00 | 89.880 | 265.710 | 7245.15 | 8624.04 | 1318.31 | -8528.51 | 40°33'08.055"N | 104°49'19.351"W | 1.59 | |
| 15597.00 | 90.060 | 264.940 | 7245.20 | 8716.19 | 1310.65 | -8622.20 | 40°33'07.979"N | 104°49'20.564"W | 0.84 | |
| 15691.00 | 90.090 | 266.480 | 7245.07 | 8808.47 | 1303.62 | -8715.93 | 40°33'07.909"N | 104°49'21.778"W | 1.64 | |
| 15786.00 | 89.820 | 267.660 | 7245.15 | 8902.13 | 1298.76 | -8810.80 | 40°33'07.861"N | 104°49'23.007"W | 1.27 | |
| 15881.00 | 90.030 | 268.430 | 7245.27 | 8996.05 | 1295.52 | -8905.75 | 40°33'07.828"N | 104°49'24.237"W | 0.84 | |
| 15975.00 | 90.030 | 269.860 | 7245.22 | 9089.23 | 1294.12 | -8999.73 | 40°33'07.814"N | 104°49'25.455"W | 1.52 | |
| 16070.00 | 90.860 | 270.480 | 7244.49 | 9183.61 | 1294.40 | -9094.73 | 40°33'07.817"N | 104°49'26.686"W | 1.09 | |
| 16165.00 | 90.950 | 269.580 | 7242.99 | 9277.96 | 1294.45 | -9189.72 | 40°33'07.817"N | 104°49'27.916"W | 0.95 | |
| 16260.00 | 91.290 | 269.410 | 7241.13 | 9372.19 | 1293.61 | -9284.69 | 40°33'07.808"N | 104°49'29.147"W | 0.40 | |
| 16354.00 | 91.050 | 270.520 | 7239.21 | 9465.52 | 1293.55 | -9378.67 | 40°33'07.807"N | 104°49'30.364"W | 1.21 | |
| 16448.00 | 90.920 | 271.410 | 7237.59 | 9559.04 | 1295.14 | -9472.65 | 40°33'07.823"N | 104°49'31.581"W | 0.96 | |
| 16543.00 | 91.020 | 270.840 | 7235.99 | 9653.57 | 1297.00 | -9567.61 | 40°33'07.841"N | 104°49'32.812"W | 0.61 | |
| 16637.00 | 91.020 | 271.880 | 7234.31 | 9747.15 | 1299.23 | -9661.57 | 40°33'07.862"N | 104°49'34.029"W | 1.11 | |
| 16732.00 | 90.980 | 270.200 | 7232.65 | 9841.67 | 1300.96 | -9756.54 | 40°33'07.879"N | 104°49'35.259"W | 1.77 | |
| 16826.00 | 90.980 | 269.240 | 7231.05 | 9934.96 | 1300.50 | -9850.52 | 40°33'07.874"N | 104°49'36.477"W | 1.02 | |

Actual Wellpath Report

THORNTON A-29-30HN AWP

Page 8 of 10

REFERENCE WELLPATH IDENTIFICATION

| | | | |
|----------|--------------------------------|----------|--------------------------------------------------------|
| Operator | BAYSWATER E & P LLC | Slot | SLOT#12 THORNTON A-29-30HN (1645'FNL & 404'FWL,SEC.28) |
| Area | COLORADO | Well | THORNTON A-29-30HN |
| Field | WELD COUNTY (NAD83/TRUE NORTH) | Wellbore | THORNTON A-29-30HN AWB |
| Facility | SEC.28-T07N-R66W | | |

WELLPATH DATA (191 stations)

| MD [ft] | Inclination [°] | Azimuth [°] | TVD [ft] | Vert Sect [ft] | North [ft] | East [ft] | Latitude | Longitude | DLS [°/100ft] | Comments |
|------------|--------------------|----------------|-------------|-------------------|---------------|--------------|----------------|-----------------|------------------|---------------------------------------------|
| 16921.00 | 91.050 | 270.920 | 7229.36 | 10029.31 | 1300.63 | -9945.50 | 40°33'07.875"N | 104°49'37.707"W | 1.77 | |
| 17016.00 | 91.200 | 269.510 | 7227.50 | 10123.68 | 1300.99 | -10040.48 | 40°33'07.878"N | 104°49'38.937"W | 1.49 | |
| 17111.00 | 90.980 | 269.250 | 7225.69 | 10217.89 | 1299.96 | -10135.46 | 40°33'07.868"N | 104°49'40.168"W | 0.36 | |
| 17205.00 | 91.140 | 268.330 | 7223.95 | 10310.98 | 1297.97 | -10229.42 | 40°33'07.848"N | 104°49'41.385"W | 0.99 | |
| 17300.00 | 91.080 | 268.830 | 7222.11 | 10405.02 | 1295.62 | -10324.37 | 40°33'07.824"N | 104°49'42.615"W | 0.53 | |
| 17394.00 | 90.980 | 268.850 | 7220.42 | 10498.12 | 1293.72 | -10418.34 | 40°33'07.805"N | 104°49'43.832"W | 0.11 | |
| 17488.00 | 91.110 | 268.280 | 7218.71 | 10591.16 | 1291.36 | -10512.29 | 40°33'07.781"N | 104°49'45.050"W | 0.62 | |
| 17583.00 | 91.260 | 267.990 | 7216.74 | 10685.08 | 1288.27 | -10607.22 | 40°33'07.750"N | 104°49'46.279"W | 0.34 | |
| 17678.00 | 91.050 | 266.500 | 7214.83 | 10778.77 | 1283.71 | -10702.09 | 40°33'07.705"N | 104°49'47.508"W | 1.58 | |
| 17763.00 | 91.260 | 265.970 | 7213.11 | 10862.34 | 1278.13 | -10786.89 | 40°33'07.649"N | 104°49'48.607"W | 0.67 | LAST BHGE SURVEY (152'FNL & 497'FWL,SEC.30) |
| 17788.00 | 91.260 | 265.970 | 7212.56 | 10886.90 | 1276.37 | -10811.82 | 40°33'07.632"N | 104°49'48.930"W | 0.00 | PROJ TO BIT (153'FNL & 472'FWL,SEC.30) |

HOLE & CASING SECTIONS - Ref Wellbore: THORNTON A-29-30HN AWB Ref Wellpath: THORNTON A-29-30HN AWP

| String/Diameter | Start MD [ft] | End MD [ft] | Interval [ft] | Start TVD [ft] | End TVD [ft] | Start N/S [ft] | Start E/W [ft] | End N/S [ft] | End E/W [ft] |
|------------------------|------------------|----------------|------------------|-------------------|-----------------|-------------------|-------------------|-----------------|-----------------|
| 13.5in Open Hole | 25.00 | 1552.00 | 1527.00 | 25.00 | 1529.56 | 0.00 | 0.00 | 209.81 | -42.13 |
| 9.625in Casing Surface | 25.00 | 1552.00 | 1527.00 | 25.00 | 1529.56 | 0.00 | 0.00 | 209.81 | -42.13 |
| 8.5in Open Hole | 1552.00 | 17788.00 | 16236.00 | 1529.56 | 7212.56 | 209.81 | -42.13 | 1276.37 | -10811.82 |

Actual Wellpath Report

THORNTON A-29-30HN AWP

Page 9 of 10

REFERENCE WELLPATH IDENTIFICATION

| | | | |
|----------|--------------------------------|----------|--------------------------------------------------------|
| Operator | BAYSWATER E & P LLC | Slot | SLOT#12 THORNTON A-29-30HN (1645'FNL & 404'FWL,SEC.28) |
| Area | COLORADO | Well | THORNTON A-29-30HN |
| Field | WELD COUNTY (NAD83/TRUE NORTH) | Wellbore | THORNTON A-29-30HN AWB |
| Facility | SEC.28-T07N-R66W | | |

TARGETS

| Name | TVD [ft] | North [ft] | East [ft] | Grid East [US ft] | Grid North [US ft] | Latitude | Longitude | Shape |
|------------------------------------------------------------|-------------|---------------|--------------|----------------------|-----------------------|----------------|-----------------|---------|
| THORNTON A-29-30HN BHL REV-1 (160'FNL & 470'FWL,SEC.30) | 7209.00 | 1269.12 | -10814.53 | 3186107.03 | 1444673.74 | 40°33'07.560"N | 104°49'48.965"W | point |
| THORNTON A-29-30HN BHL REV-2 (160'FNL & 470'FWL,SEC.30) | 7211.00 | 1269.12 | -10814.53 | 3186107.03 | 1444673.74 | 40°33'07.560"N | 104°49'48.965"W | point |
| THORNTON A-29-30HN WP1 (-2310'SSTVD@8300'FLP) | 7244.00 | 1304.14 | -9120.20 | 3187800.98 | 1444722.30 | 40°33'07.913"N | 104°49'27.016"W | point |
| THORNTON A-29-30HN LP REV-1 (160'FNL & 470'FEL,SEC.29) | 7259.00 | 1475.88 | -822.00 | 3196097.27 | 1444960.34 | 40°33'09.626"N | 104°47'39.516"W | point |
| THORNTON A-29-30HN BHL PLAT (160'FNL & 470'FWL,SEC.30) | 7299.00 | 1269.12 | -10814.53 | 3186107.03 | 1444673.74 | 40°33'07.560"N | 104°49'48.965"W | point |
| THORNTON A-29-30HN LP PLAT (160'FNL & 470'FEL,SEC.29) | 7349.00 | 1475.88 | -822.00 | 3196097.27 | 1444960.34 | 40°33'09.626"N | 104°47'39.516"W | point |
| SEC.28-T07N-R66W | 8000.00 | 0.00 | 0.00 | 3196931.02 | 1443491.12 | 40°32'55.043"N | 104°47'28.867"W | polygon |
| SEC.29-T07N-R66W | 8000.00 | 0.00 | 0.00 | 3196931.02 | 1443491.12 | 40°32'55.043"N | 104°47'28.867"W | polygon |
| SEC.30-T07N-R66W | 8000.00 | 0.00 | 0.00 | 3196931.02 | 1443491.12 | 40°32'55.043"N | 104°47'28.867"W | polygon |

WELLPATH COMPOSITION - Ref Wellbore: THORNTON A-29-30HN AWB Ref Wellpath: THORNTON A-29-30HN AWP

| Start MD [ft] | End MD [ft] | Positional Uncertainty Model | Log Name/Comment | Wellbore |
|------------------|----------------|------------------------------|----------------------------------------------|------------------------|
| 25.00 | 1507.00 | BHI NaviTrak (Axial) | BHI NAVITRAK (AXIAL) <134-1507> | THORNTON A-29-30HN AWB |
| 1507.00 | 17763.00 | BHI AutoTrak Curve (Short) | BHI/ATCurve (Short) 8.5" Hole <1596'-17763'> | THORNTON A-29-30HN AWB |
| 17763.00 | 17788.00 | Blind Drilling (std) | Projection to bit | THORNTON A-29-30HN AWB |

Actual Wellpath Report

THORNTON A-29-30HN AWP

Page 10 of 10

| REFERENCE WELLPATH IDENTIFICATION | | | |
|-----------------------------------|--------------------------------|----------|--------------------------------------------------------|
| Operator | BAYSWATER E & P LLC | Slot | SLOT#12 THORNTON A-29-30HN (1645'FNL & 404'FWL,SEC.28) |
| Area | COLORADO | Well | THORNTON A-29-30HN |
| Field | WELD COUNTY (NAD83/TRUE NORTH) | Wellbore | THORNTON A-29-30HN AWB |
| Facility | SEC.28-T07N-R66W | | |

| WELLPATH COMMENTS | | | | |
|-------------------|--------------------|----------------|-------------|---------------------------------------------|
| MD [ft] | Inclination [°] | Azimuth [°] | TVD [ft] | Comment |
| 1507.00 | 13.530 | 346.490 | 1485.80 | SURVEY TIE-ON (1445'FNL & 358'FWL,SEC.28) |
| 17763.00 | 91.260 | 265.970 | 7213.11 | LAST BHGE SURVEY (152'FNL & 497'FWL,SEC.30) |
| 17788.00 | 91.260 | 265.970 | 7212.56 | PROJ TO BIT (153'FNL & 472'FWL,SEC.30) |