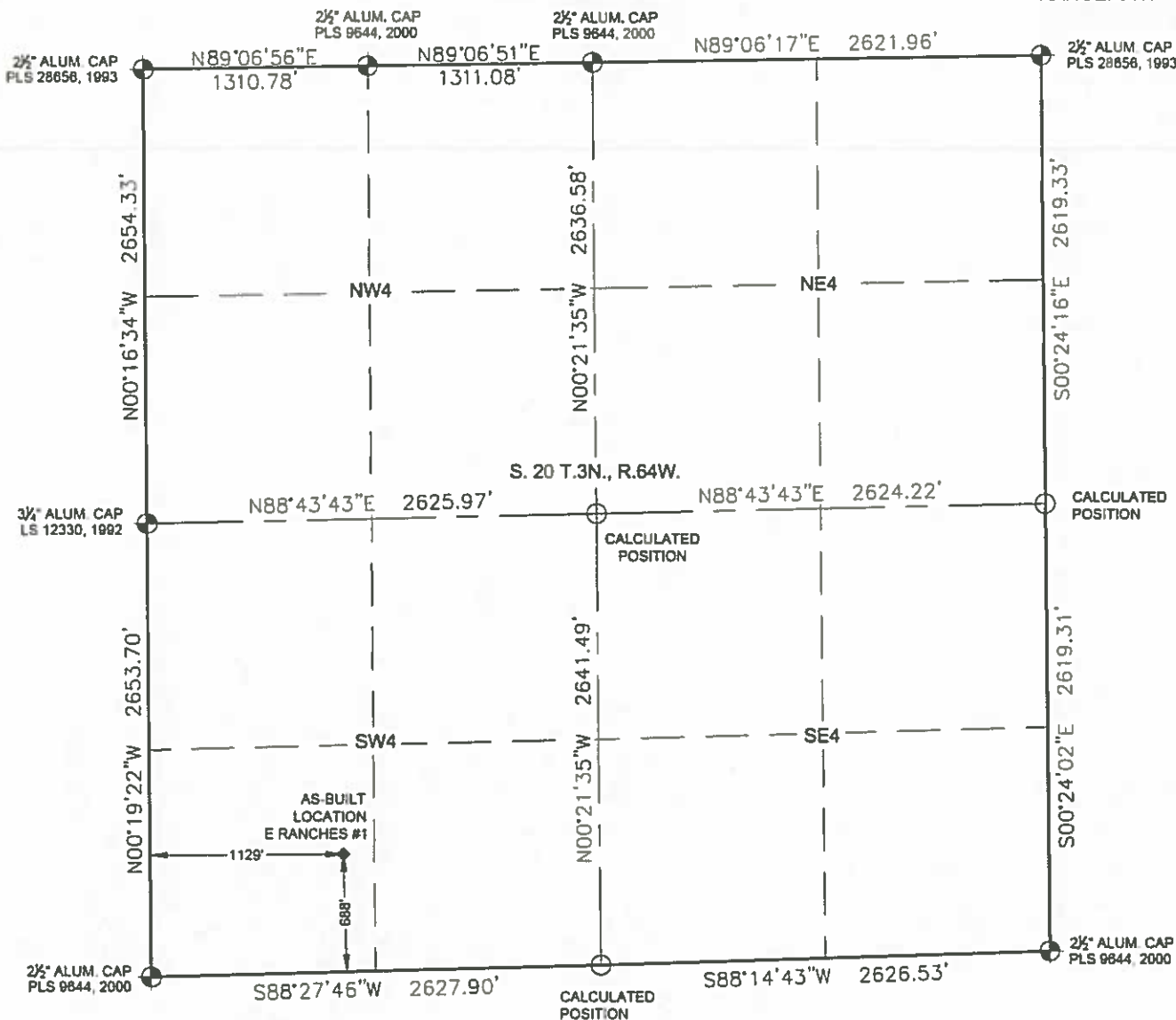


ASCENT GEOMATICS SOLUTIONS 7535 HILLTOP CIRCLE  
WELL AS-BUILT SURVEY  
E RANCHES #1

DENVER, CO 80221

SECTION: 20  
TOWNSHIP: 3N  
RANGE: 64W



0 500 1000  
SCALE: 1" = 1000'

In accordance with a request from Brian Amsberry with Noble Energy Inc.  
Ascent Geomatics Solutions has determined the surface location of the E RANCHES #1 to be 686' from the SOUTH  
line and 1129' from the WEST line as measured at right angles from the section line of Section 20, Township 3 North,  
Range 64 West of the Sixth Principal Meridian, County of Weld, State of Colorado.

I hereby state that this Well As-Built Survey was prepared by me, or under my direct supervision, that  
the fieldwork was completed on 08/14/18 for and on behalf of Noble Energy Inc., and that this map  
does not represent a Boundary Survey, it is not a Land Survey Plat or an Improvement Survey Plat,  
and it is not to be relied upon for the establishment of fence, building, or other future improvement lines.

NOTES:

- 1) ALL BEARINGS ARE GRID BEARINGS OF THE COLORADO STATE PLANE COORDINATE SYSTEM,  
NORTH ZONE, NORTH AMERICAN DATUM 1983/2011. THE LINEAL DIMENSIONS AS SHOWN  
HEREIN ARE GRID DISTANCES BASED UPON THE "U.S. SURVEY FOOT." TO GET GROUND  
DISTANCES MULTIPLY SHOWN DISTANCE BY 1.000267.
- 2) THIS WELL AS-BUILT SURVEY REFLECTS A CHANGE IN DATUM FROM USING A GROUND BASED  
DATUM TO THE USE OF STATE PLANE GRID DATUM.
- 3) GROUND ELEVATIONS ARE BASED ON AN OBSERVED GPS ELEVATION (NAVD 1988 DATUM).
- 4) SURFACE USE: "RANGELAND"
- 5) INSTRUMENT OPERATOR: ANDREW MULLER

SURFACE LOCATION:  
LATITUDE: 40.20543°N  
LONGITUDE: 104.58047°W  
PDOP: 1.8  
ELEV: 4774'  
¼ ¼ SW¼ SW¼

LEGEND

- = FOUND MONUMENT
- = CALCULATED POSITION
- ◆ = EXISTING WELL

SHEET 1 OF 1

FIELD  
DATE:  
08-14-18

DRAWING  
DATE:  
08-16-18

DRAWN BY:  
FWM

CHECKED BY:  
RMC



ROBERT J. GUFFEY, PLS 20680  
COLORADO LICENSED PROFESSIONAL LAND SURVEYOR  
FOR AND ON BEHALF OF P.F. & J. LAND SURVEYING  
d b a. ASCENT GEOMATICS SOLUTIONS