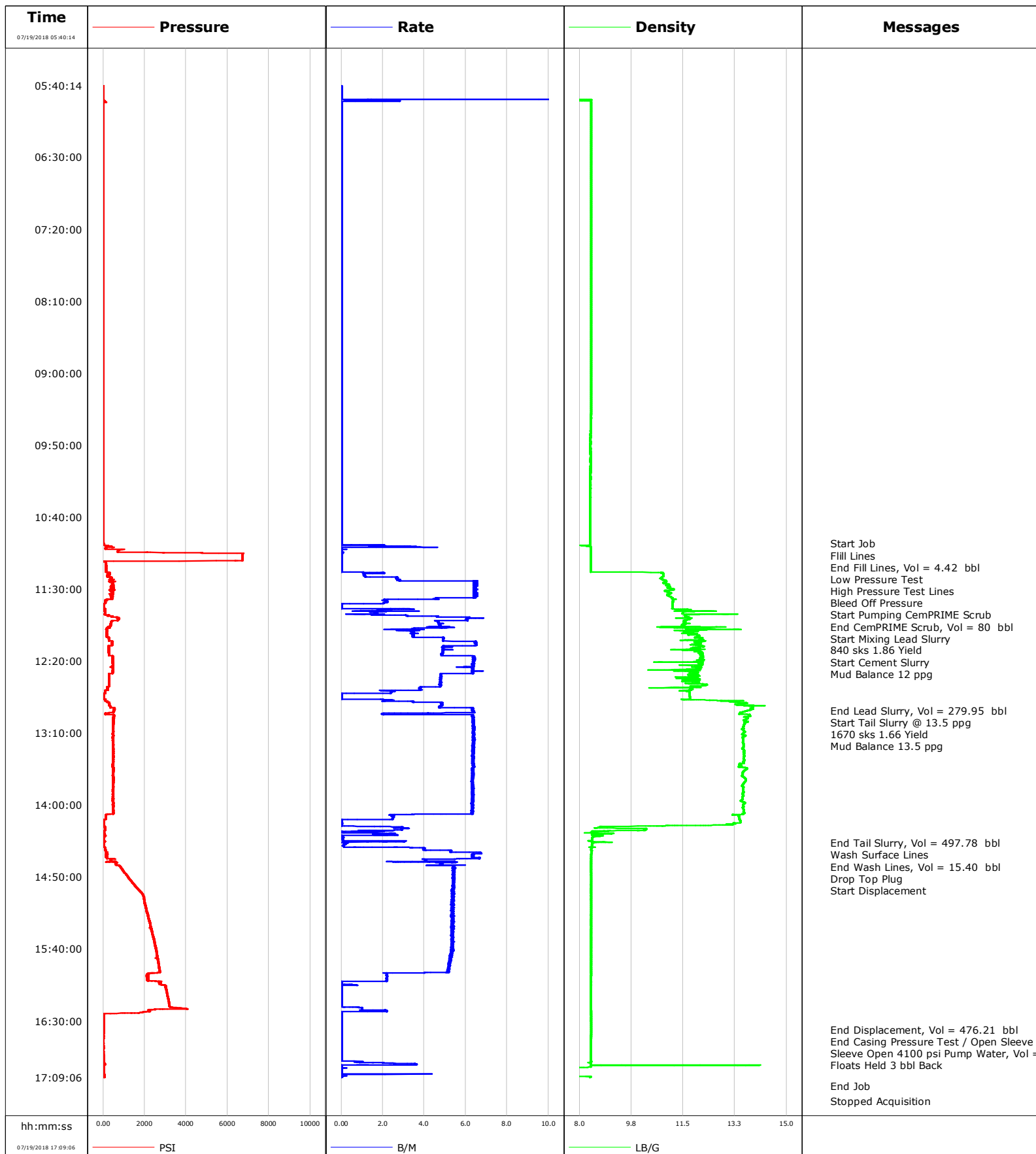


<b>Well</b>	English Farms 8-9HZ	<b>Client</b>	Anadarko
<b>Field</b>	Wattenberg	<b>SIR No.</b>	2741217
<b>Engineer</b>	Adam Aasen	<b>Job Type</b>	Cem Prod Casing
<b>Country</b>	United States	<b>Job Date</b>	07-19-2018



# Cementing Service Report

				Customer Anadarko			Job Number 2741217		
Well English Farms 8-9HZ			Location (legal)		Schlumberger Location Cheyenne			Job Start Jul/19/2018	
Field Wattenberg		Formation Name/Type		Deviation 90 deg		Bit Size 8.5 in		Well MD 20538.0 ft	
County Weld		State/Province Colorado		BHP psi		BHST 230 degF		BHCT 230 degF	
Well Master 0631765167		API/UWI 051234659300						Pore Press. Gradient lb/gal	
Rig Name Precision 564		Drilled For Oil		Service Via Land		Casing / Liner			
						Depth, ft		Size, in	
						Weight, lb/ft		Grade	
Offshore Zone		Well Class N/A		Well Type Development		1876.0		9.6	
						20528.0		5.5	
						36.0		J55	
						17.0		P110	
Drilling Fluid Type Oil Mud		Max. Density 9.30 lb/gal		Plastic Viscosity 52.000 cP		Tubing / Drill Pipe			
						T/D		Depth, ft	
						Size, in		Weight, lb/ft	
						Grade		Thread	
Service Line Cementing		Job Type Cem Prod Casing							
Max. Allowed Tub. Press psi		Max. Allowed Ann. Press psi		WH Connection 5" IF DP pin		Perforations / Open Hole			
						Top, ft		Bottom, ft	
						shot/ft		No. of Shots	
								Total Interval ft	
						ft		ft	
						ft		ft	
						ft		ft	
						Treat Down Casing		Displacement 476.0 bbl	
						Packer Type		Packer Depth ft	
						Tubing Vol. bbl		Casing Vol. 476.0 bbl	
						Annular Vol. 850.4 bbl		Openhole Vol. 0.7 bbl	
Casing/Tubing Secured <input checked="" type="checkbox"/>		1 Hole Vol. Circulated prior to Cement <input type="checkbox"/>				Casing Tools		Squeeze Job	
Lift Pressure psi						Shoe Type Float		Squeeze Type	
Pipe Rotated <input type="checkbox"/>		Pipe Reciprocated <input type="checkbox"/>				Shoe Depth 20528.0 ft		Tool Type	
No. Centralizers		Top Plugs 1		Bottom Plugs 1		Stage Tool Type		Tool Depth ft	
Cement Head Type Double						Stage Tool Depth ft		Tail Pipe Size in	
Job Scheduled For Jul/19/2018 03:00		Arrived on Location Jul/19/2018 03:00		Leave Location Jul/19/2018 07:00		Collar Type Float		Tail Pipe Depth ft	
						Collar Depth 20515.1 ft		Sqz. Total Vol. bbl	
Date	Time 24-hr clock	Treating Pressure PSI	Flow Rate B/M	Density LB/G	Volume BBL	Message			
07/19/2018	10:58:20	29	0.0	8.37	0.0	Start Job			
07/19/2018	10:58:38	30	0.0	8.36	0.0	Fill Lines			
07/19/2018	11:01:12	122	0.0	8.38	0.0	End Fill Lines, Vol = 4.42 bbl			
07/19/2018	11:01:21	115	0.0	8.38	0.0	Low Pressure Test			
07/19/2018	11:11:01	119	0.0	8.38	0.0	High Pressure Test Lines			
07/19/2018	11:11:06	118	0.0	8.38	0.0	Bleed Off Pressure			
07/19/2018	11:12:33	142	0.0	8.38	0.0	Start Pumping CemPRIME Scrub			
07/19/2018	11:40:05	40	0.0	11.14	0.0	End CemPRIME Scrub, Vol = 80 bbl			
07/19/2018	11:40:24	37	0.0	11.14	0.0	Start Mixing Lead Slurry			
07/19/2018	11:40:40	37	0.0	11.14	0.0	Start Cement Slurry			
07/19/2018	11:43:30	91	3.0	11.13	0.0	Mud Balance 12 ppg			
07/19/2018	12:46:12	42	0.0	11.73	0.0	End Lead Slurry, Vol = 279.95 bbl			
07/19/2018	12:46:15	41	0.0	11.73	0.0	Start Tail Slurry @ 13.5 ppg			
07/19/2018	12:50:23	300	4.9	13.42	0.0	Mud Balance 13.5 ppg			
07/19/2018	14:09:43	81	2.3	13.42	0.0	End Tail Slurry, Vol = 497.78 bbl			
07/19/2018	14:10:25	38	0.0	13.43	0.0	Wash Surface Lines			
07/19/2018	14:26:45	32	0.2	8.43	0.0	End Wash Lines, Vol = 15.40 bbl			
07/19/2018	14:28:05	33	0.1	8.42	0.0	Drop Top Plug			
07/19/2018	14:30:26	98	4.0	8.40	0.0	Start Displacement			
07/19/2018	16:19:38	3204	0.0	8.38	0.0	End Displacement, Vol = 476.21 bbl			
07/19/2018	16:22:17	2256	2.1	8.39	0.0	End Casing Pressure Test / Open Sleeve			

Well			Field		Job Start	Customer		Job Number	
English Farms 8-9HZ			Wattenberg		Jul/19/2018	Anadarko		2741217	
Date	Time 24-hr clock	Treating Pressure PSI	Flow Rate B/M	Density LB/G	Volume BBL	Message			
07/19/2018	16:30:15	24	0.0	8.39	0.0	Floats Held 3 bbl Back			
07/19/2018	16:58:38	35	1.5	8.36	0.0	End Job			

### Post Job Summary

Average Pump Rates, bbl/min					Volume of Fluid Injected, bbl							
Slurry	N2	Mud	Maximum Rate		Total Slurry 765.4	Mud	Spacer 80.0	N2				
Treating Pressure Summary, psi					Breakdown Fluid							
Maximum	Final 0	Average	Bump Plug to 2200	Breakdown	Type FreshWater	Volume bbl	Density 8.34 lb/gal					
Avg. N2 Percent %	Designed Slurry Volume 765.4 bbl	Displacement 476.0 bbl	Mix Water Temp 65 degF	Cement Circulated to Surface? <input type="checkbox"/>		Volume 0.0 bbl						
				Washed Thru Perfs <input type="checkbox"/>		To ft						
Customer or Authorized Representative			Schlumberger Supervisor Adam Aasen			Circulation Lost <input type="checkbox"/>	Job Completed <input checked="" type="checkbox"/>					
						-	-					