

**LEGEND:**

90° SYMBOL

SURFACE LOCATION.

PRODUCTION INTERVAL.

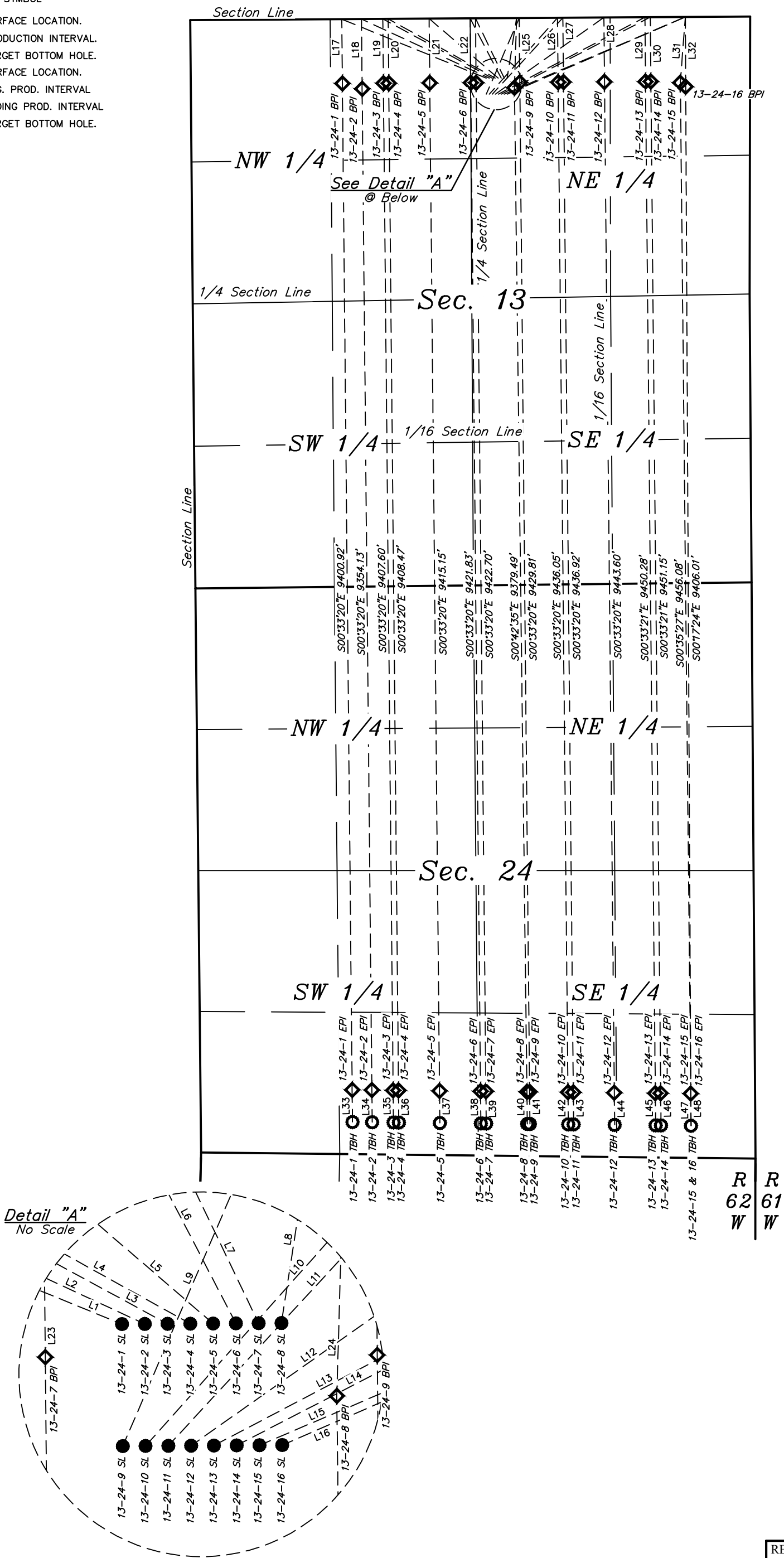
TARGET BOTTOM HOLE.

SL = SURFACE LOCATION.

BPI = BEG. PROD. INTERVAL

EPI = ENDING PROD. INTERVAL

TBH = TARGET BOTTOM HOLE.



LINE TABLE		
LINE	DIRECTION	LENGTH
L1	N67°46'20"W	1457.30'
L2	N65°09'34"W	1314.67'
L3	N61°33'57"W	1162.22'
L4	N61°02'04"W	1142.99'
L5	N49°14'54"W	851.46'
L6	N27°27'33"W	628.96'
L7	N25°38'48"W	619.25'
L8	N08°48'58"E	567.23'
L9	N23°19'29"E	775.33'
L10	N41°44'00"E	956.91'
L11	N42°41'45"E	971.80'
L12	N54°45'11"E	1241.59'
L13	N62°17'50"E	1546.21'
L14	N62°40'01"E	1565.78'
L15	N66°54'47"E	1838.40'
L16	N66°34'00"E	1812.26'
L17	S00°33'20"E	600.00'
L18	S00°33'20"E	650.00'
L19	S00°33'20"E	600.00'
L20	S00°33'20"E	600.00'
L21	S00°33'20"E	600.00'
L22	S00°33'20"E	600.00'
L23	S00°33'20"E	600.00'
L24	S01°39'53"W	650.41'
L25	S00°33'20"E	600.00'
L26	S00°33'20"E	600.00'
L27	S00°33'20"E	600.00'
L28	S00°33'20"E	600.00'
L29	S00°33'21"E	600.00'
L30	S00°33'21"E	600.00'
L31	S04°28'31"W	602.15'
L32	S00°17'24"E	650.00'
L33	S00°35'22"E	300.07'
L34	S00°35'22"E	300.07'
L35	S00°35'22"E	300.07'
L36	S00°35'22"E	300.07'
L37	S00°35'22"E	300.07'
L38	S00°35'22"E	300.07'
L39	S00°35'22"E	300.07'
L40	S00°35'22"E	300.07'
L41	S00°35'22"E	300.07'
L42	S00°35'22"E	300.07'
L43	S00°35'22"E	300.07'
L44	S00°35'22"E	300.07'
L45	S00°35'22"E	300.07'
L46	S00°35'22"E	300.07'
L47	S00°23'36"E	300.05'
L48	S00°23'36"E	300.05'

REV: 1 09-05-18 C.IVIE (BPI MOVE)

NOTES:

BISON OIL & GAS II

FREEMAN 8-62 13 PAD  
NW 1/4 NE 1/4, SECTION 13, T8N, R62W, 6th P.M.  
WELD COUNTY, COLORADO

SURVEYED BY	JARED CHRISTOPHER, O.R.	08-20-18	SCALE
DRAWN BY	C.IVIE	08-23-18	1" = 1000'
MULTI-WELL PLAN		FIGURE #3	



UELS, LLC  
Corporate Office \* 85 South 200 East  
Vernal, UT 84078 \* (435) 789-1017