



Pulsed Neutron
Gamma Ray
Casing Collar Log

Company TEP Rocky Mountain LLC		Well Federal PA 533-26		Field Parachute		County Garfield		State Colorado	
Location:		SEC 26 TWP 6S RGE 95W		API #: 05-045-23706		Other Services		RCBL	
Permanent Datum		Ground Level		Elevation		5636.9'		K.B. 5660.9'	
Log Measured From		Kelly Bushing		Elevation		24 FT		D.F. 5659.9'	
Drilling Measured From		Kelly Bushing		Elevation		5636.9'		G.L. 5636.9'	
Date	Run Number	17-JUL-2018		One					
	Depth Driller	8475 FT							
	Depth Logger	8408 FT							
	Bottom Logged Interval	8408 FT							
	Top Log Interval	4524 FT							
	Open Hole Size	8.750"		Water					
	Type Fluid	8.34 lb/gal		Density / Viscosity					
	Max. Recorded Temp.	---		Estimated Cement Top					
	Time Well Ready	ROA		Time Well Ready					
	Time Logger on Bottom	20:15		Time Logger on Bottom					
	Equipment Number	HD-0359		Equipment Number					
	Location	Grand Junction, CO		Location					
	Recorded By	Z. Fisher		Recorded By					
	Witnessed By	D. Welsh		Witnessed By					
Borehole Record		Bit		From		To		Size	
Run Number		Bit		From		To		Weight	
Casing Record		Size (in)		Wgt (lbs/ft)		Grade		Top	
Surface Casing		9 5/8		32.3		H-40		Surface	
Intermediate #1		4 1/2		11.6		P-110		Surface	
Intermediate #2									
Inner									

<<< Fold Here >>>

All interpretations are opinions based on inferences from electrical or other measurements and we cannot and do not guarantee the accuracy or correctness of any interpretation, and we shall not, except in the case of gross or willful negligence on our part, be liable or responsible for any loss, costs, damages, or expenses incurred or sustained by anyone resulting from any interpretation made by any of our officers, agents or employees. These interpretations are also subject to our general terms and conditions set out in our current Price Schedule.

Comments

Log ran as per customer request
Depth referenced to Reliance Bond Log dated 16-JUL-2018
Log ran from 8408 FT to 4524 FT
Pulsed Neutron Data logged with the Hunter RAS Tool
Thank you for choosing Reliance Oilfield Services, LLC!

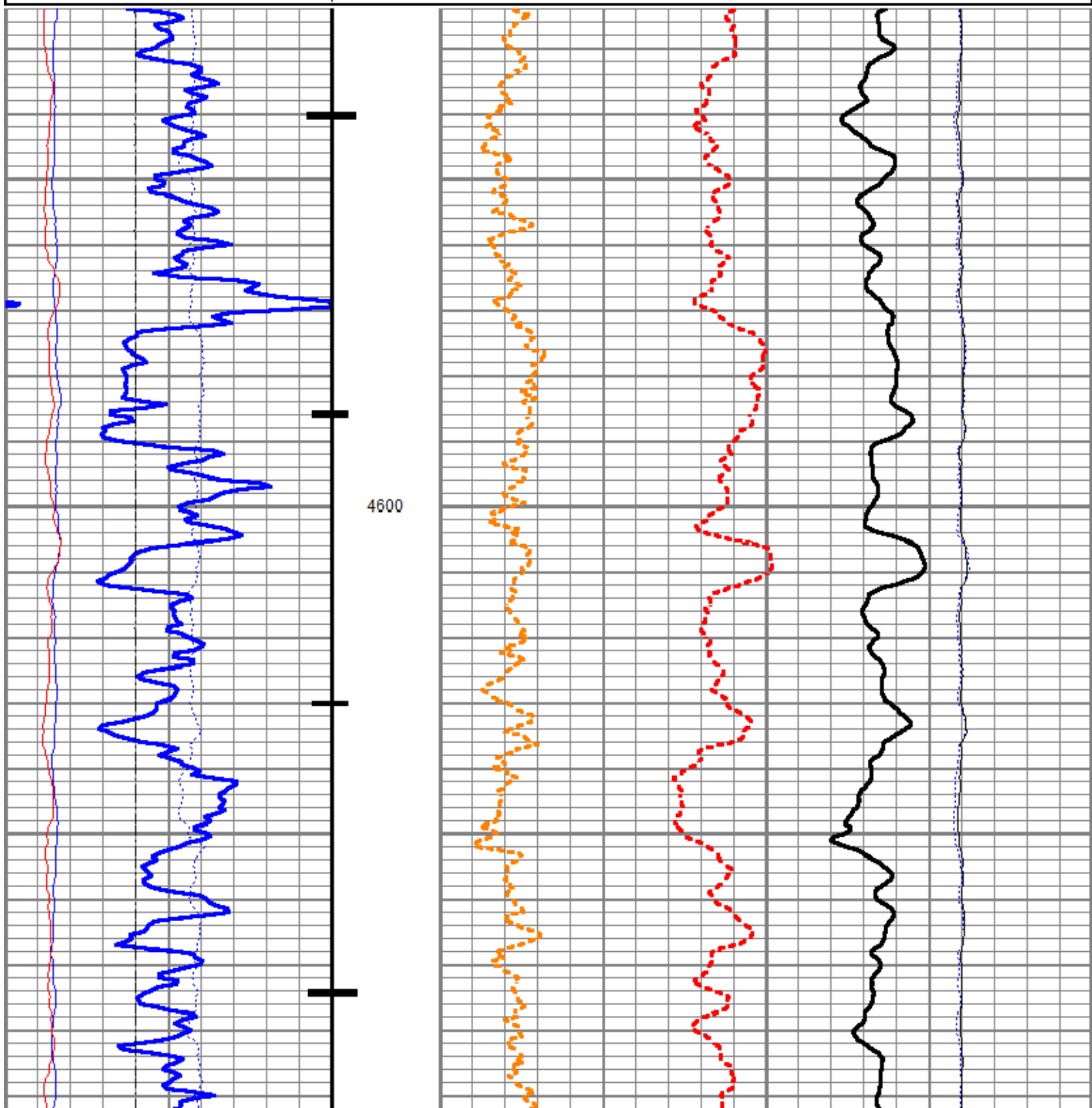


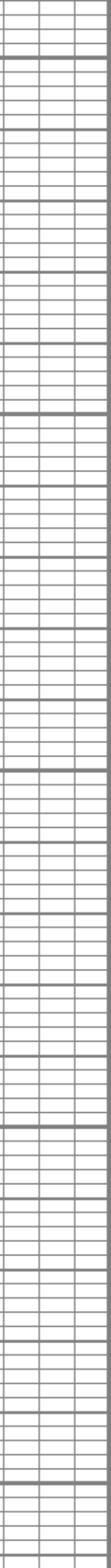
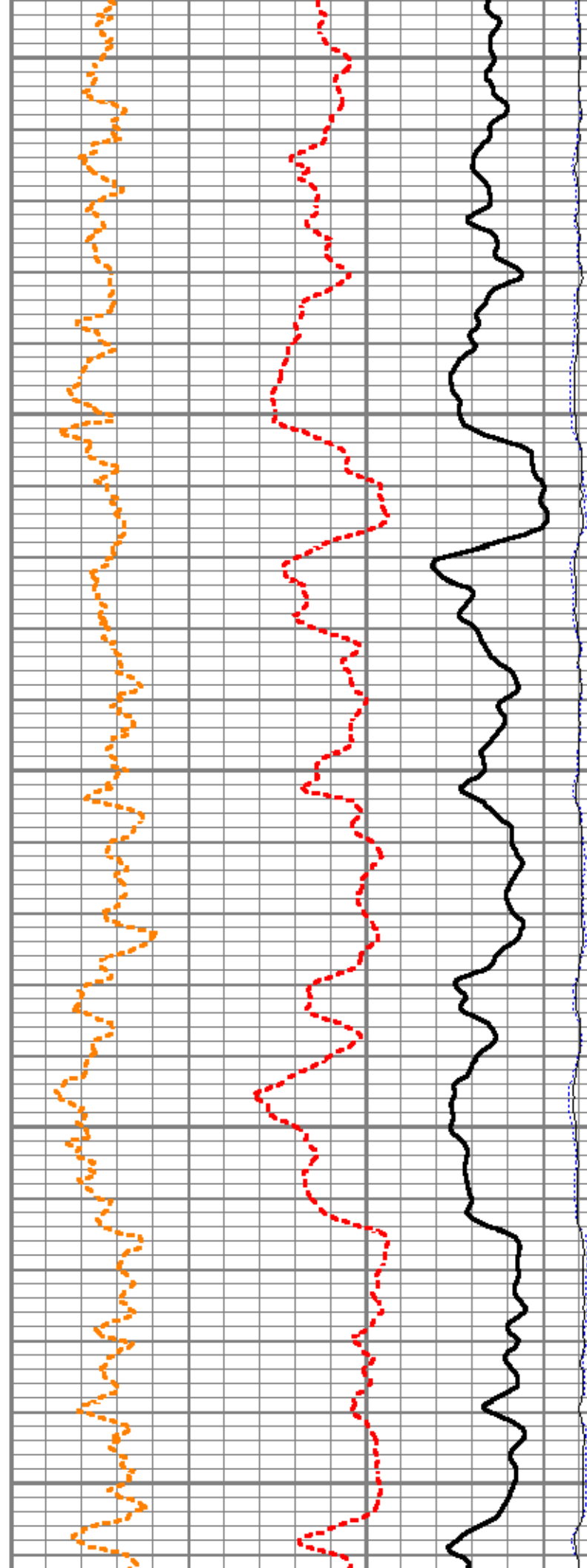
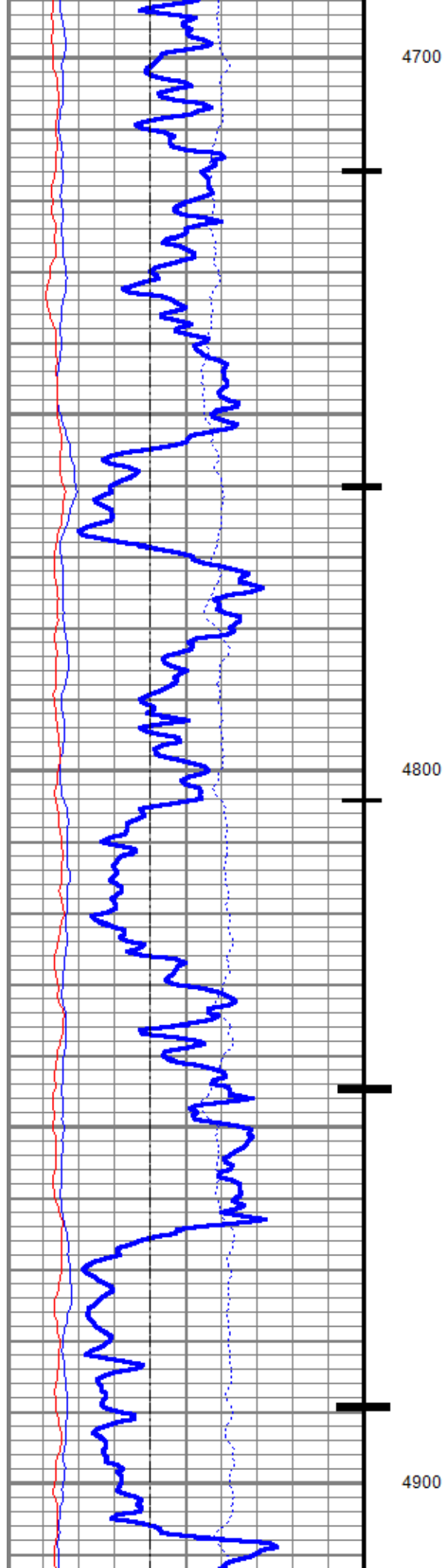
Main Pass

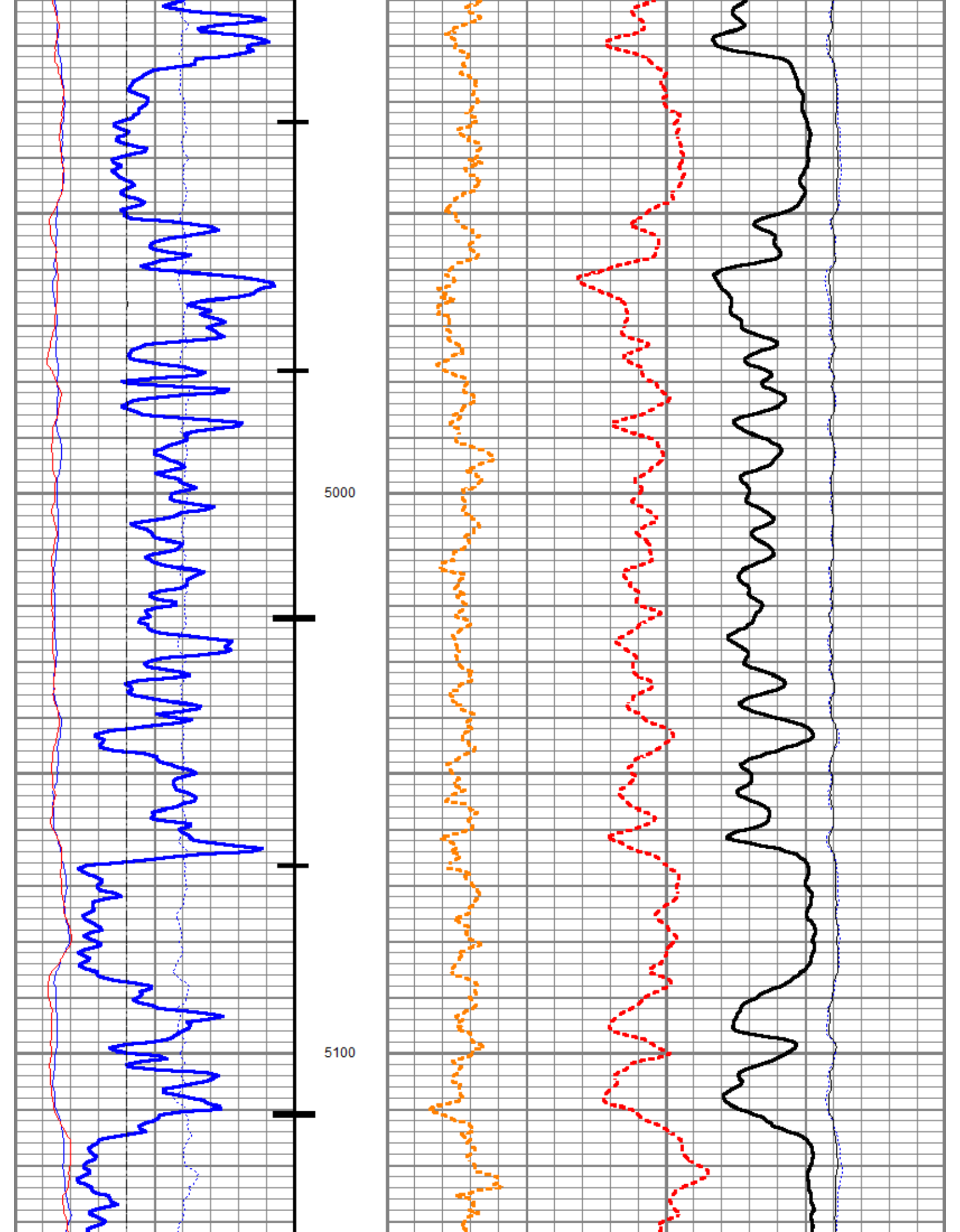
Database File	tep_federal pa 533-26_rbl_07-16-18\tep_federal pa 533-26_pn_07-17-2018\tep_federal pa 533-26_pn_07-17-18.db
Dataset Pathname	shift/merge1
Presentation Format	ros_pdn_hunter
Dataset Creation	Sat Jul 21 08:13:35 2018
Charted by	Depth in Feet scaled 1:240

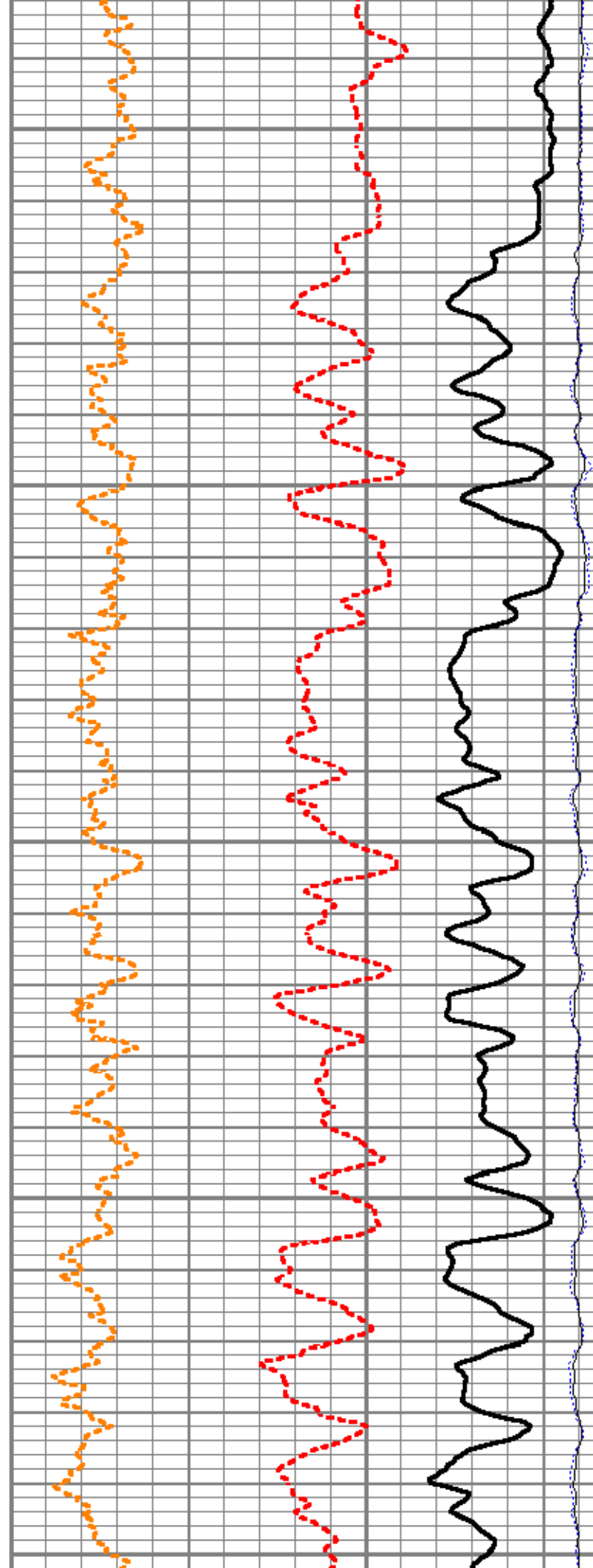
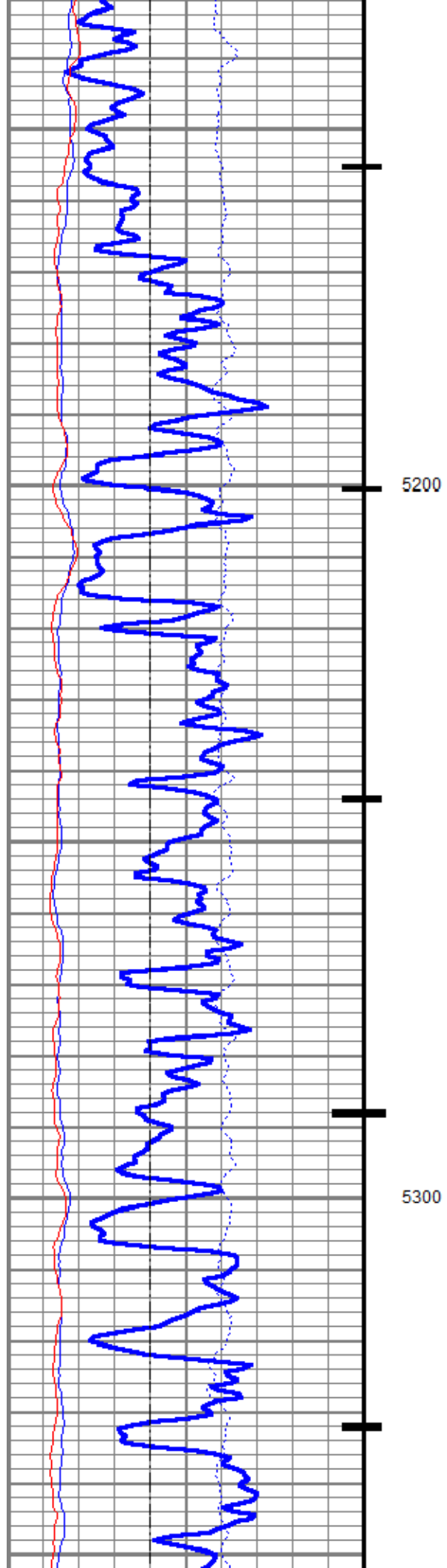
0	Gamma Ray (GAPI)	150
Casing Collar Locator		
-100	Line Speed (ft/min)	100
0	NIRS (cps)	400000
0	BKGN (cps)	4000
0	BKGF (cps)	2000

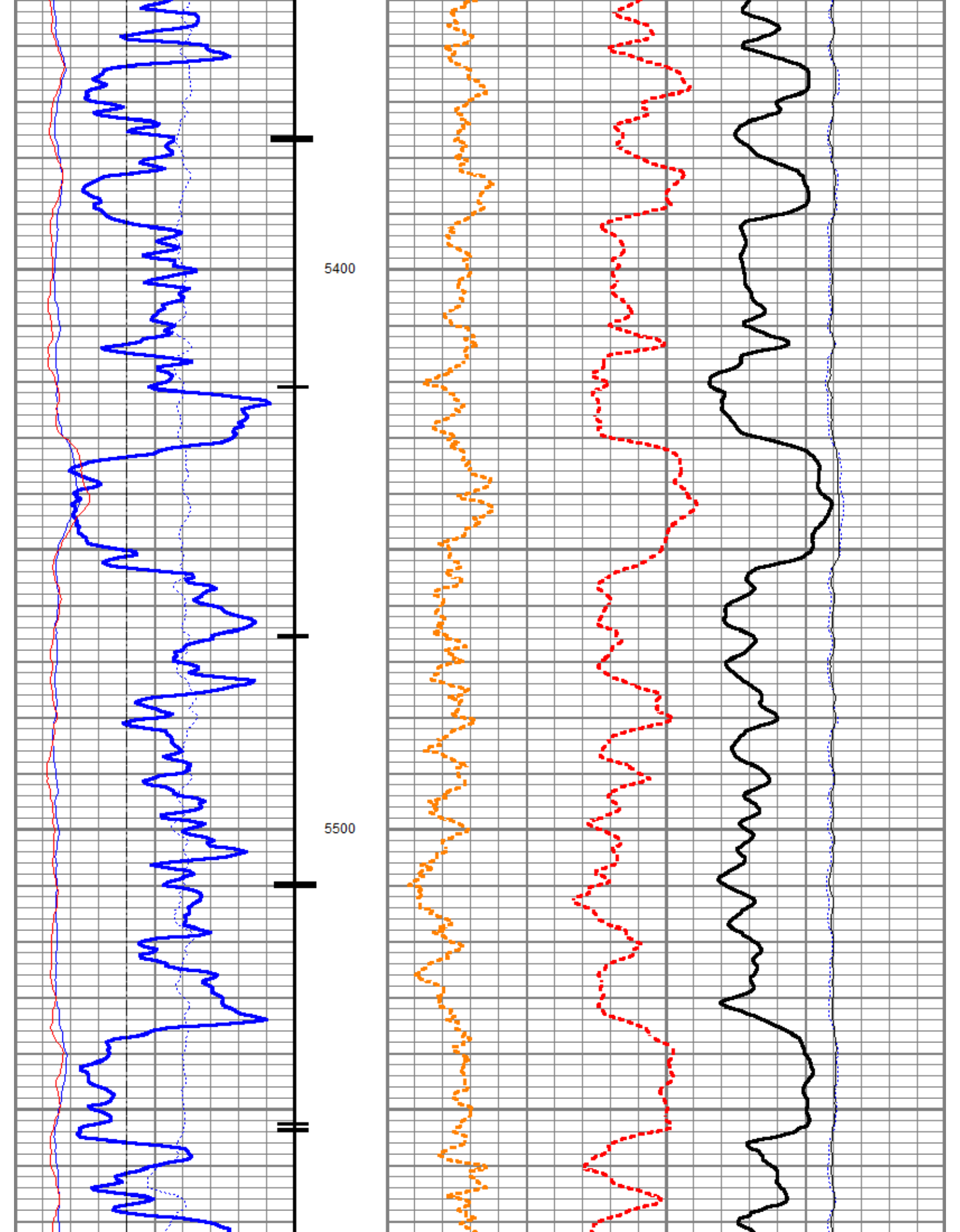
4	RNF2	0
60	SIGMA (cu)	0
4.5	RNFI	0
0	FIS2 (cps)	5000
0	NIS2 (cps)	10000

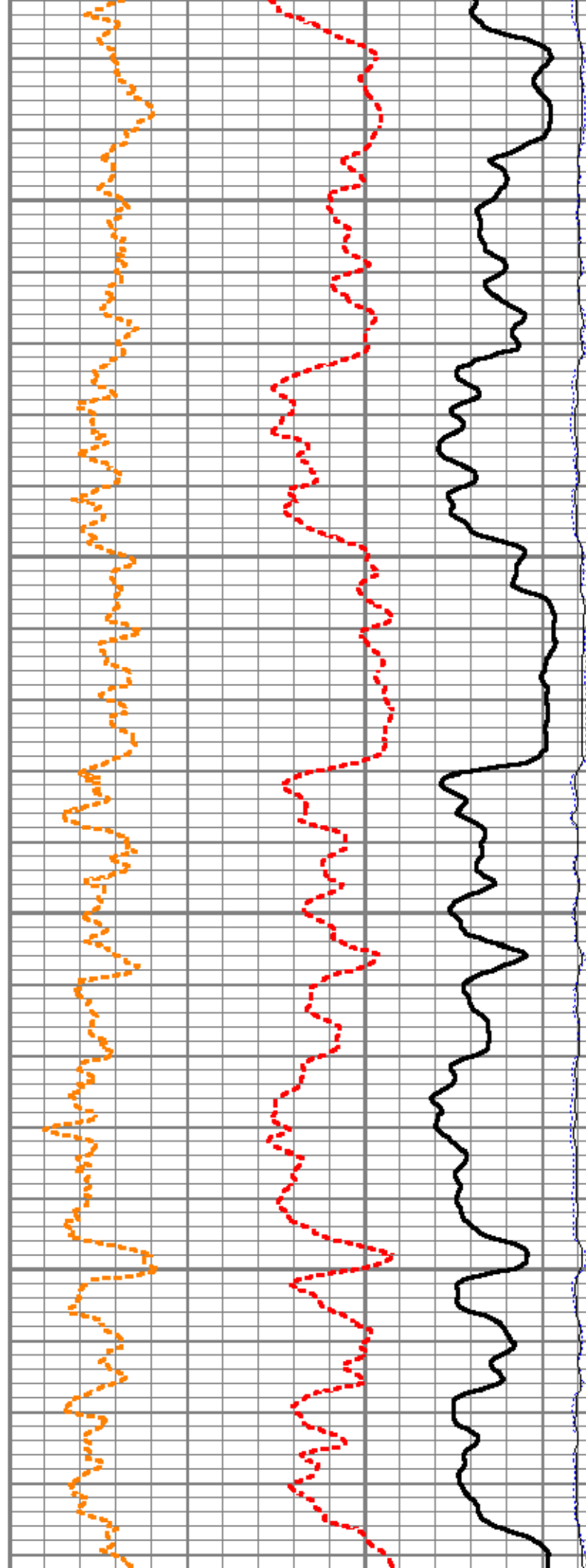
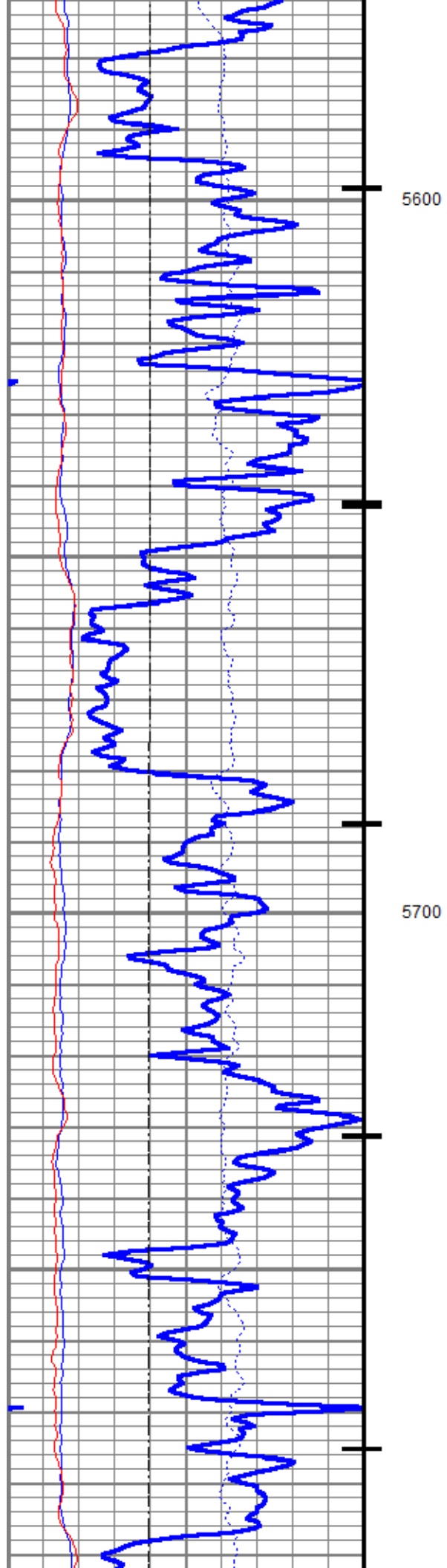


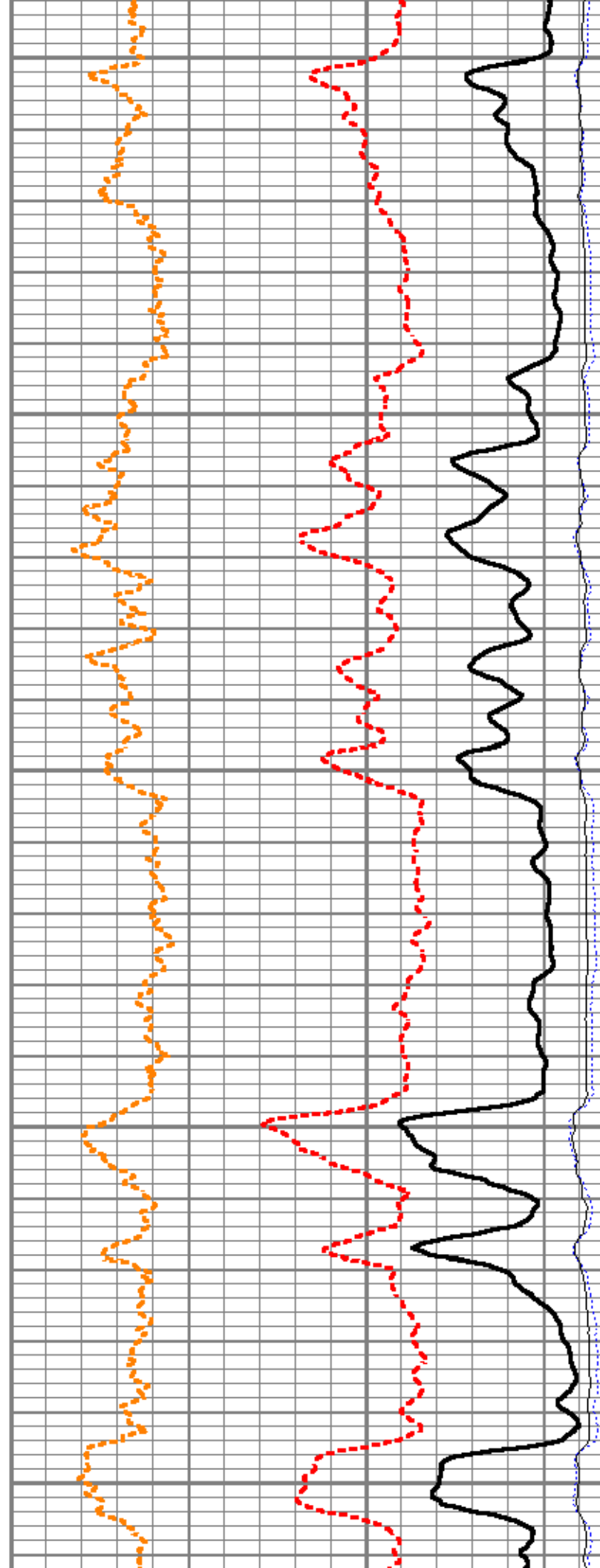
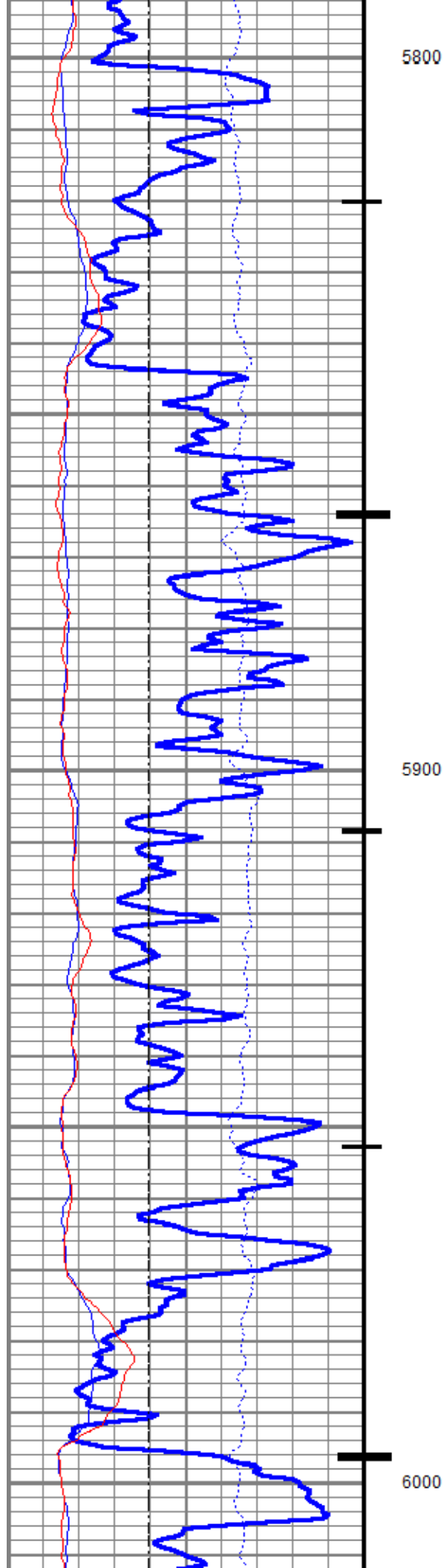


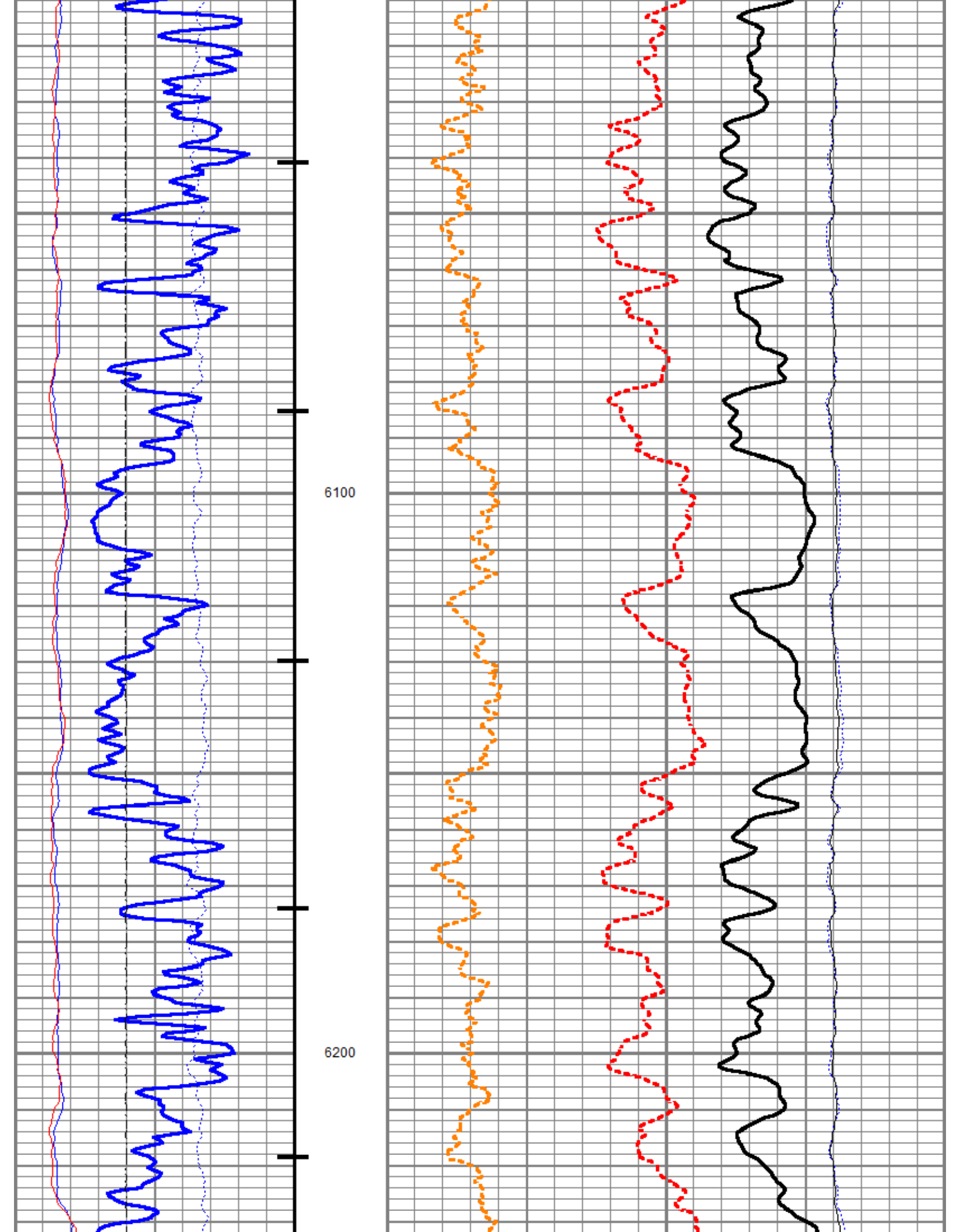


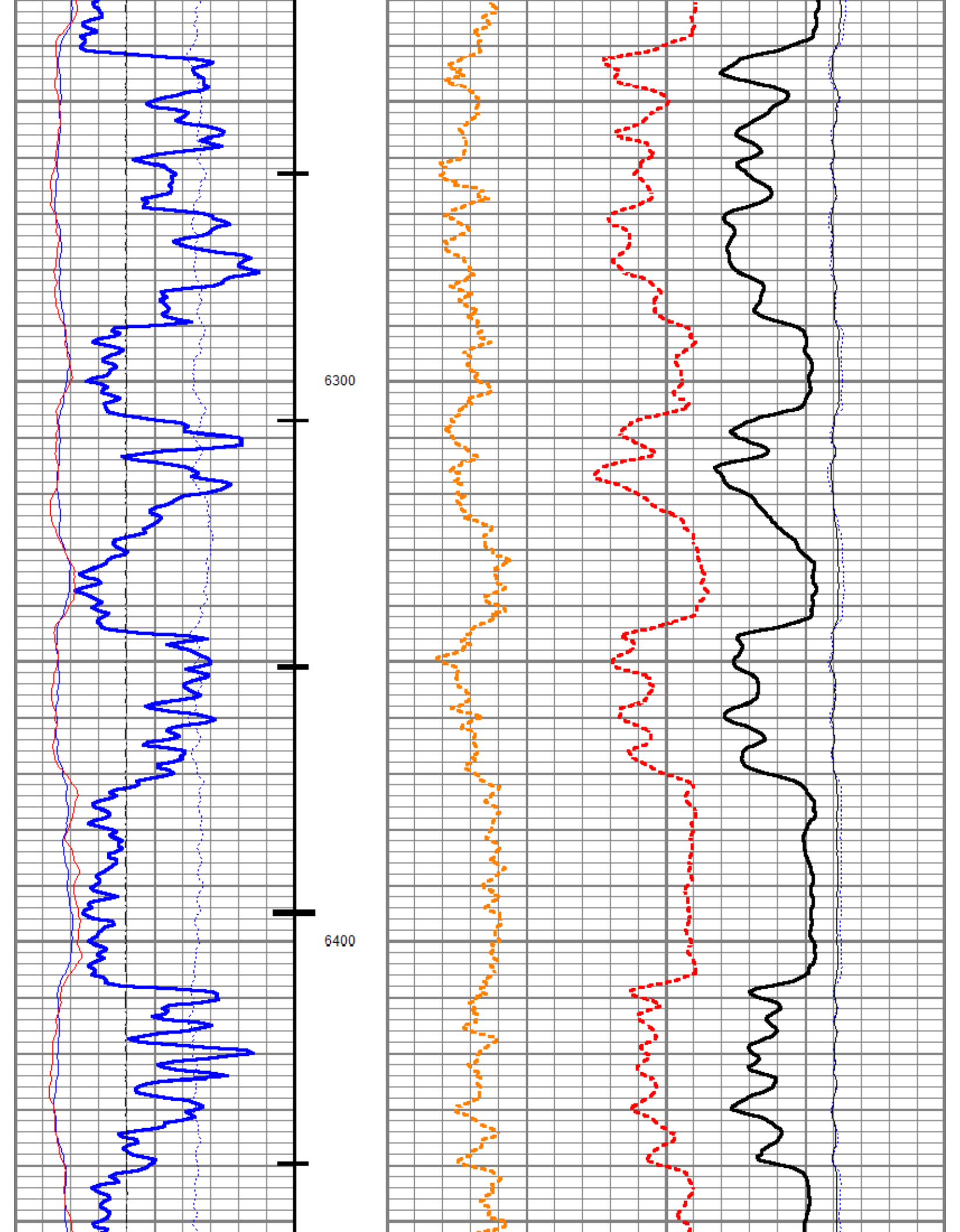


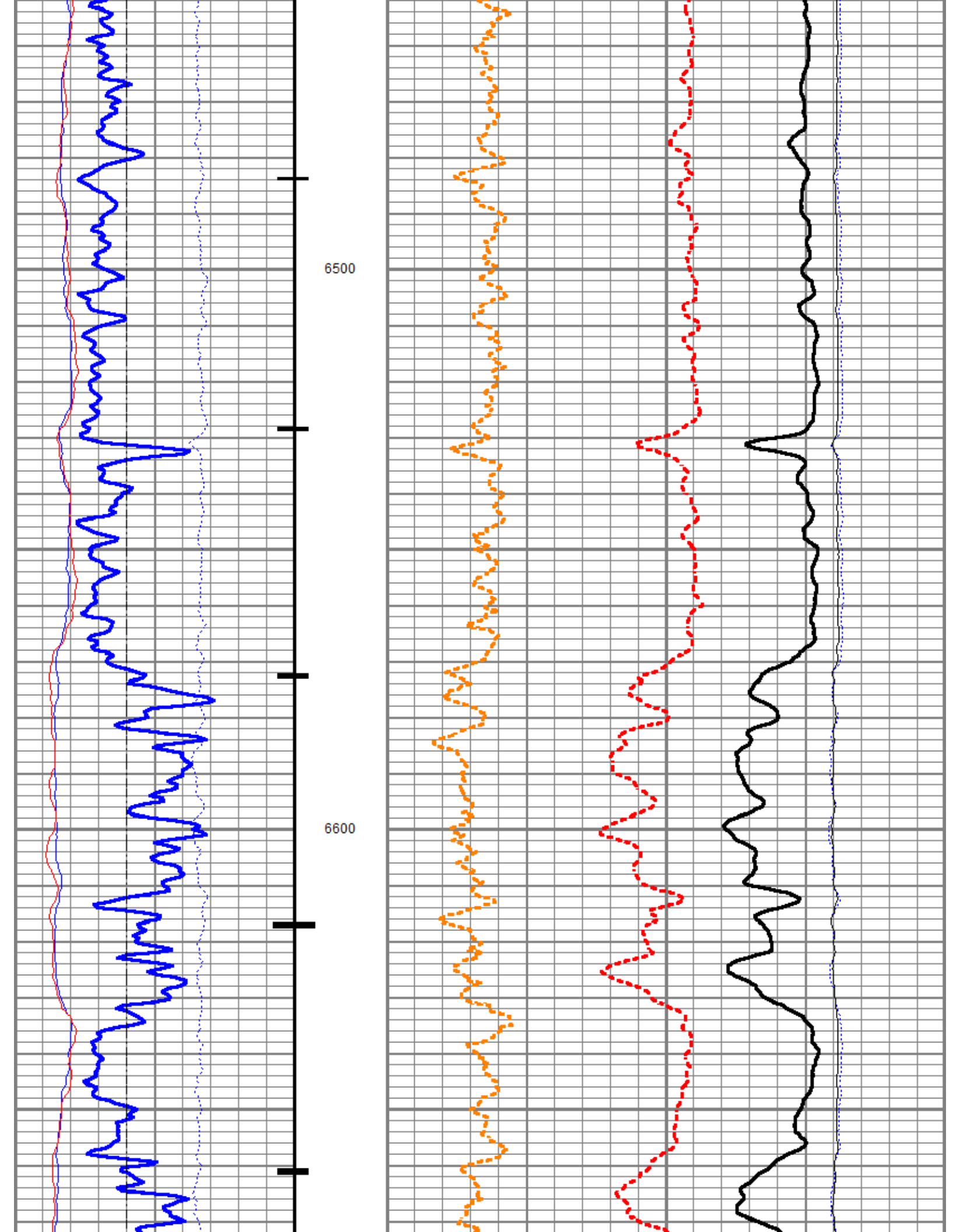


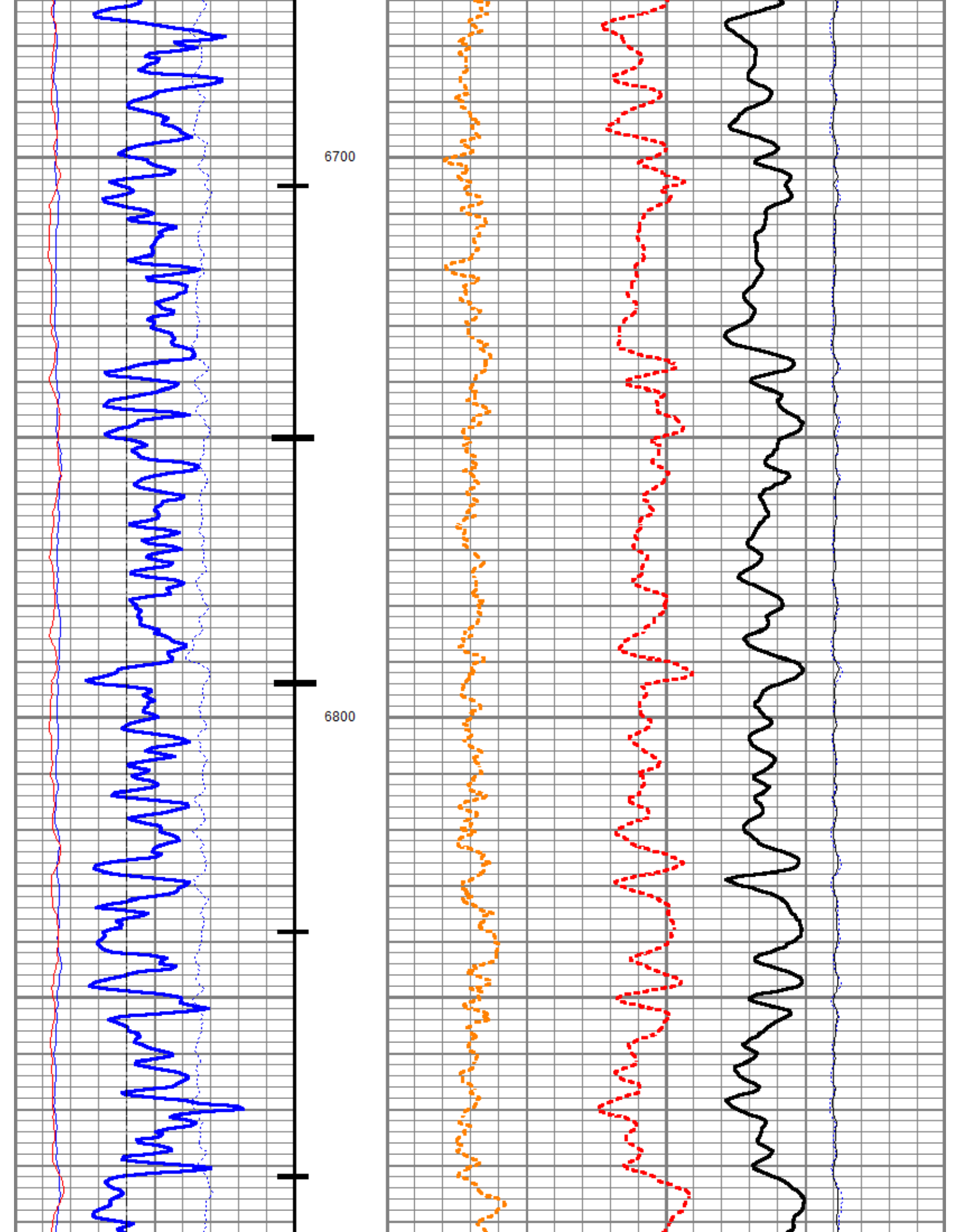


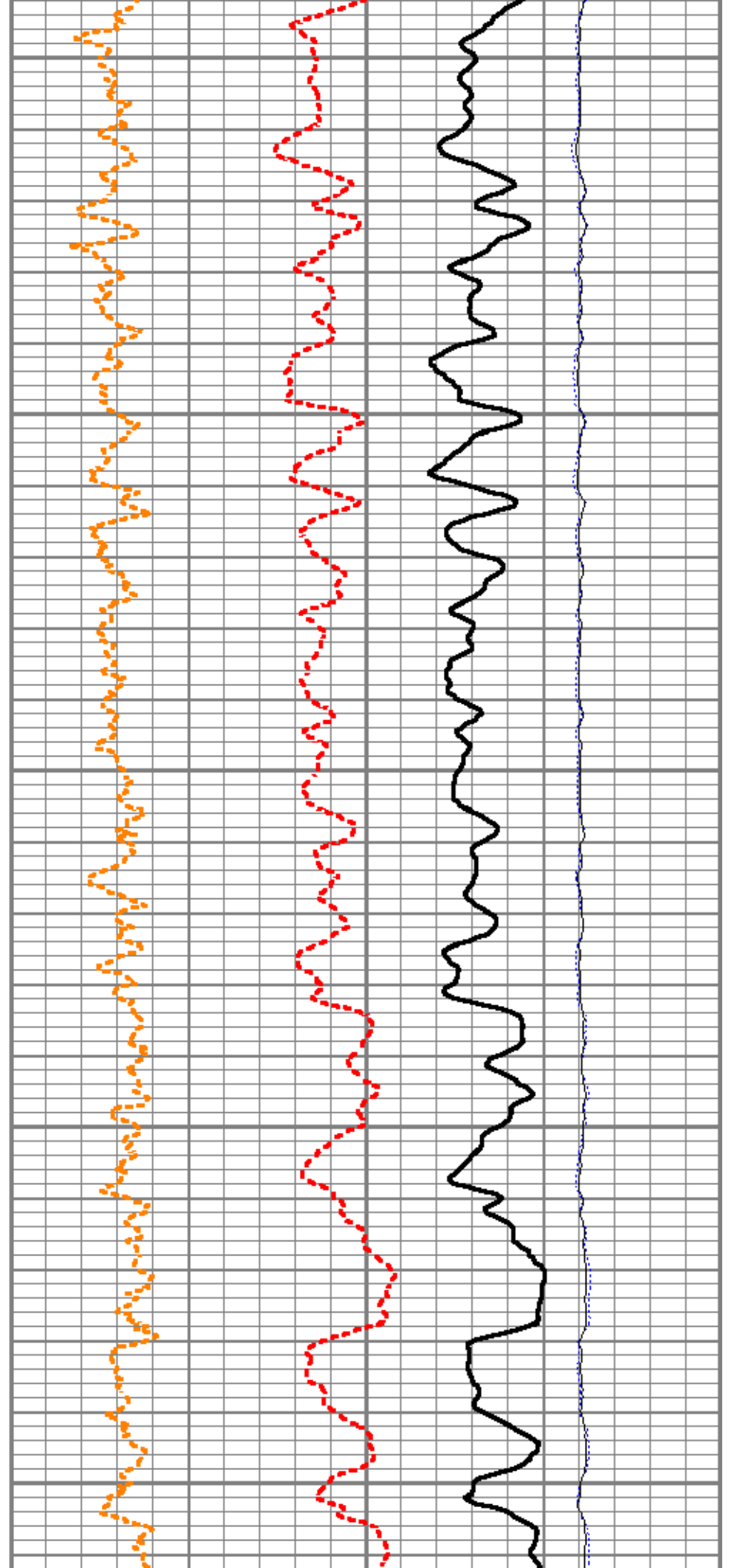
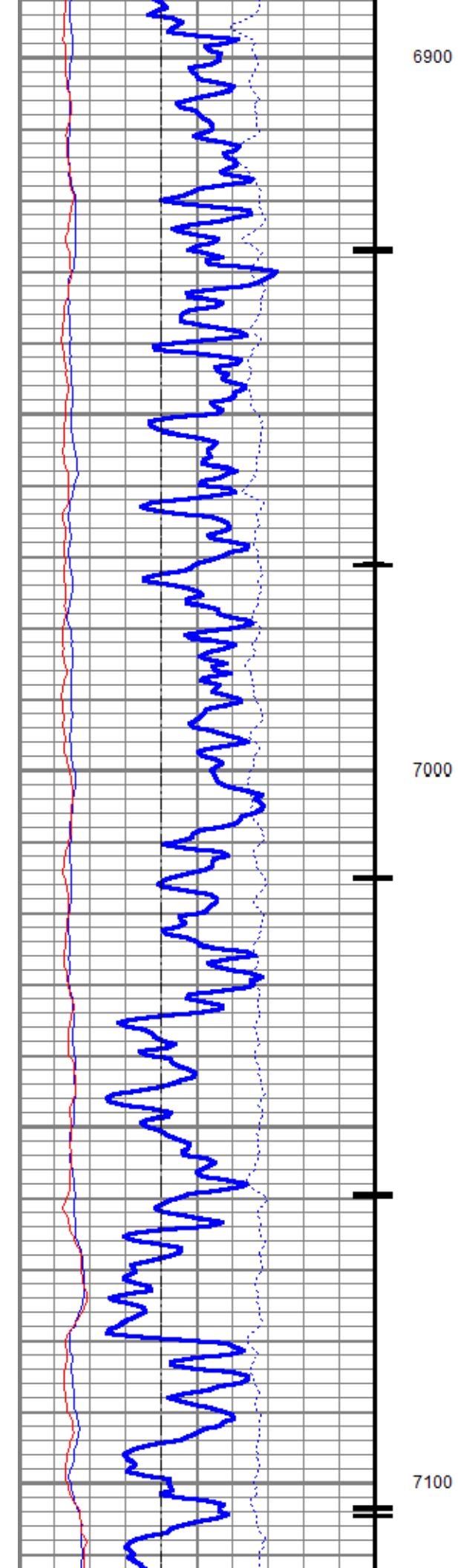


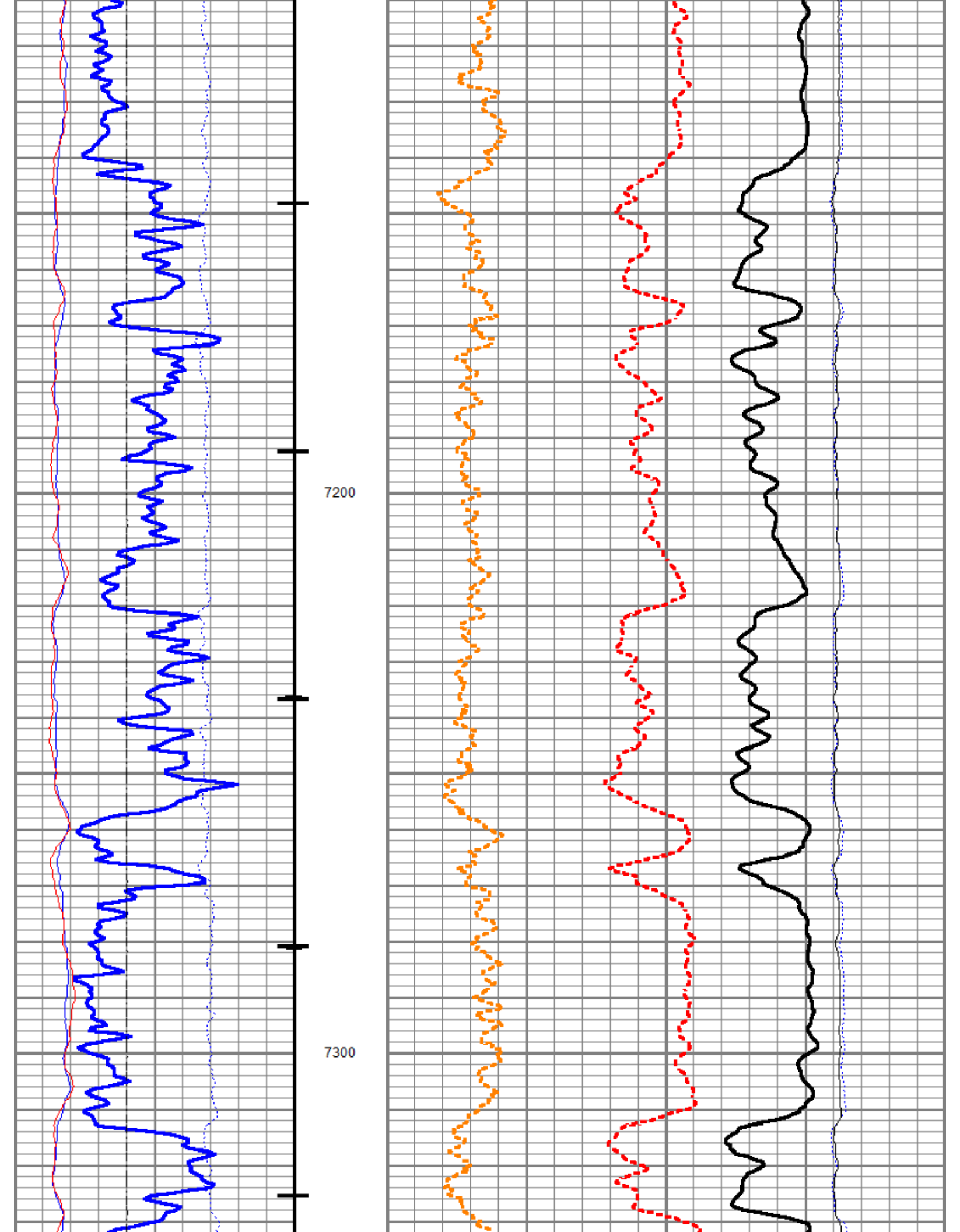


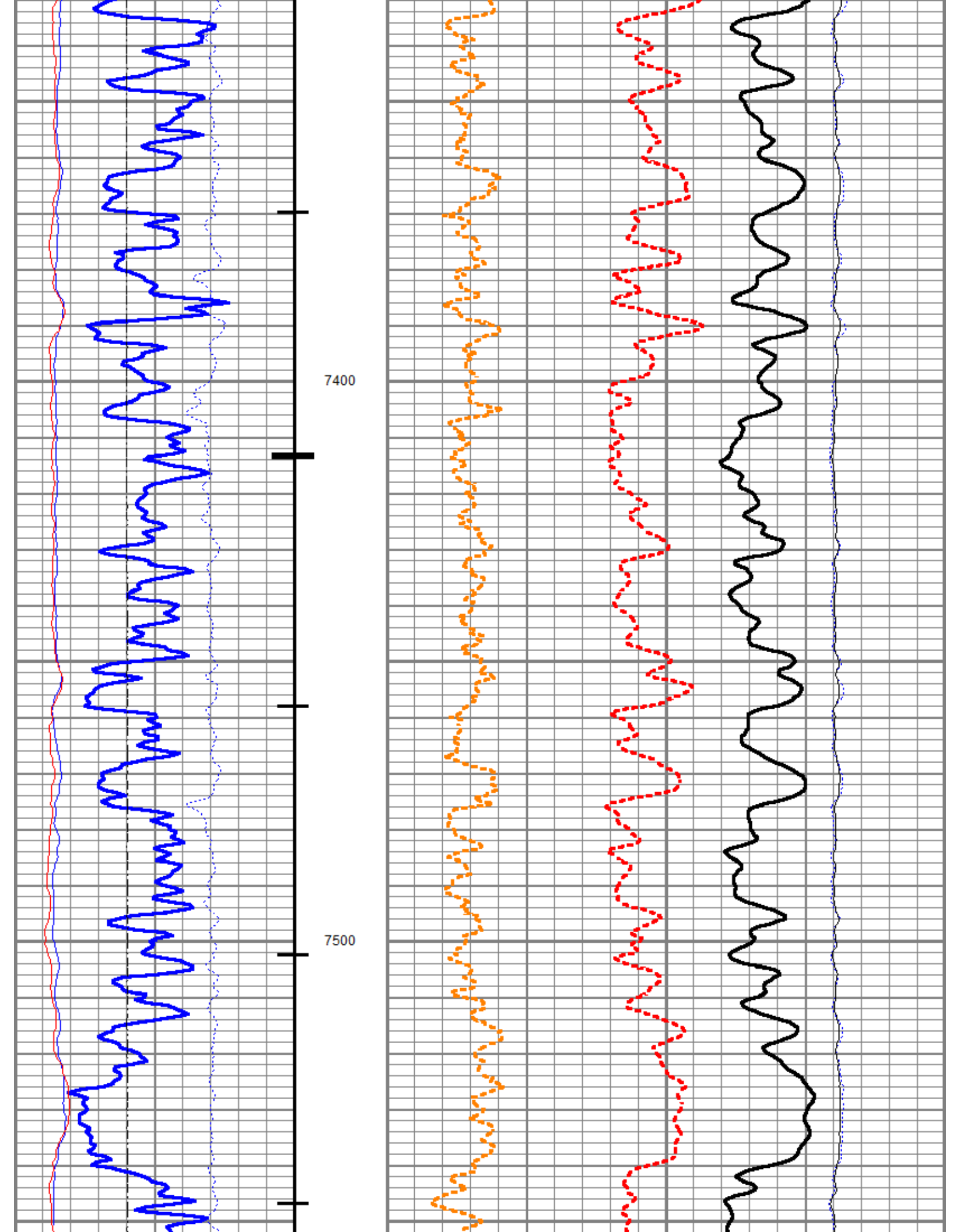


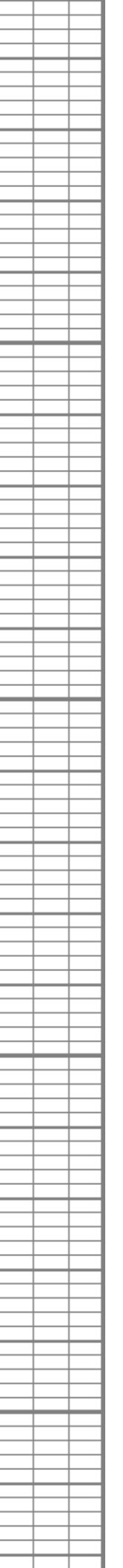
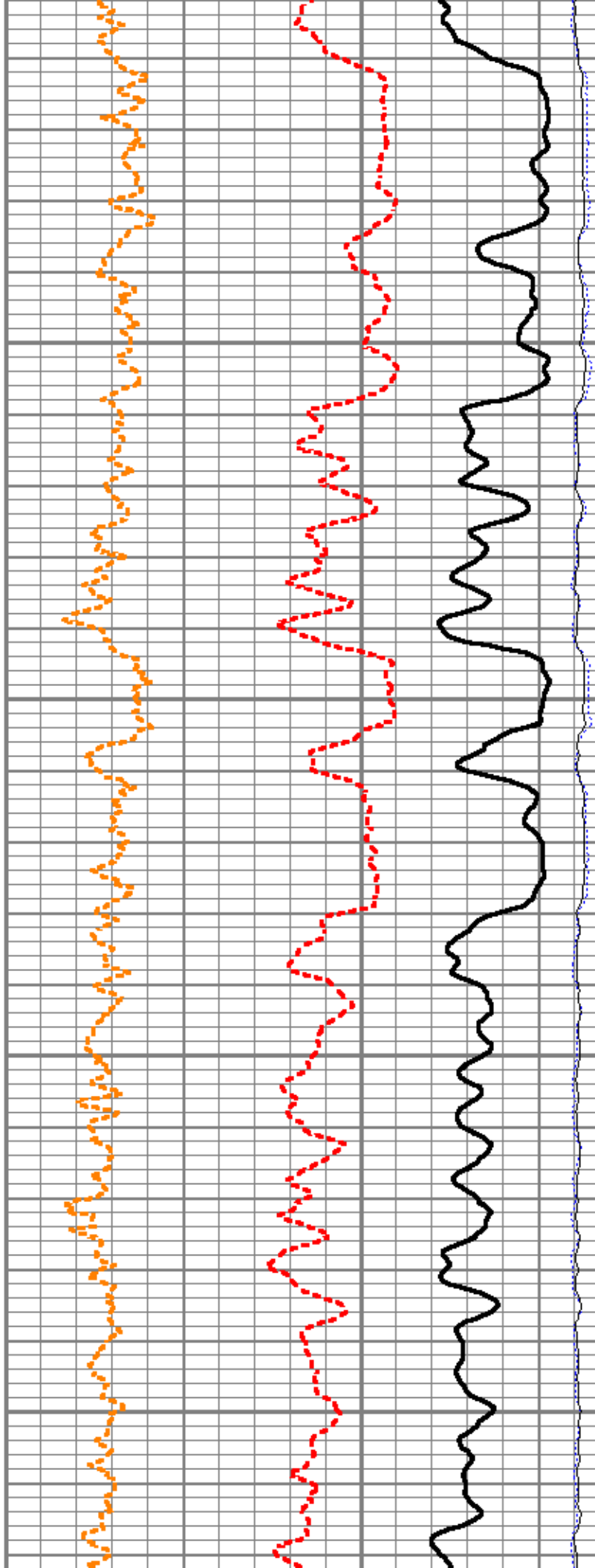
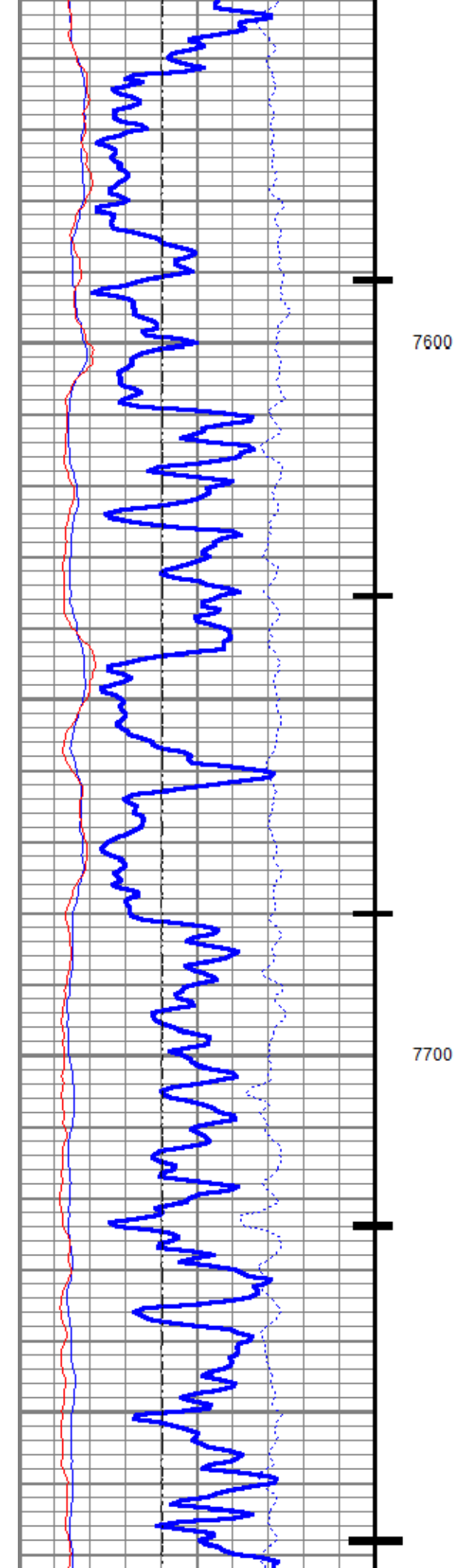


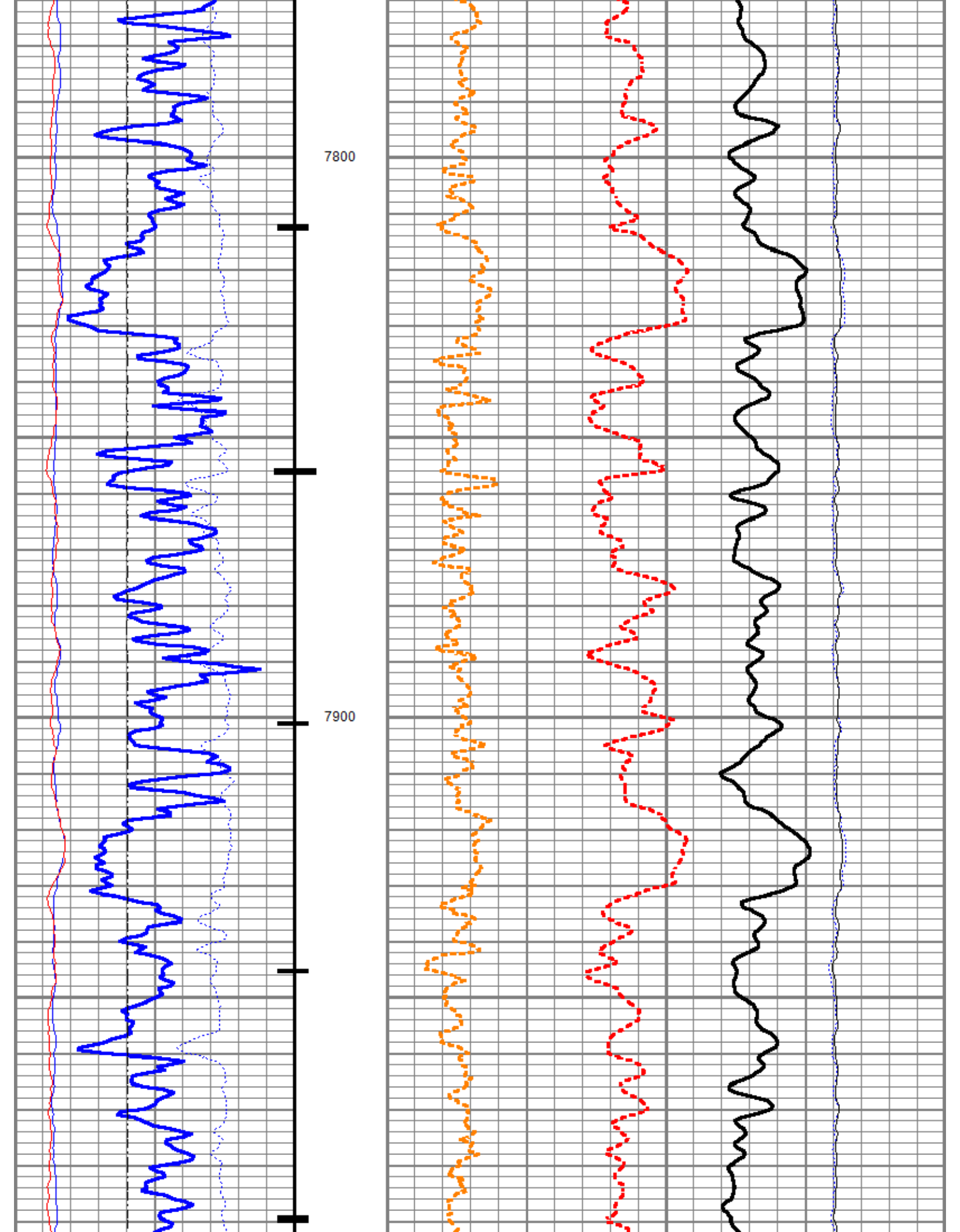


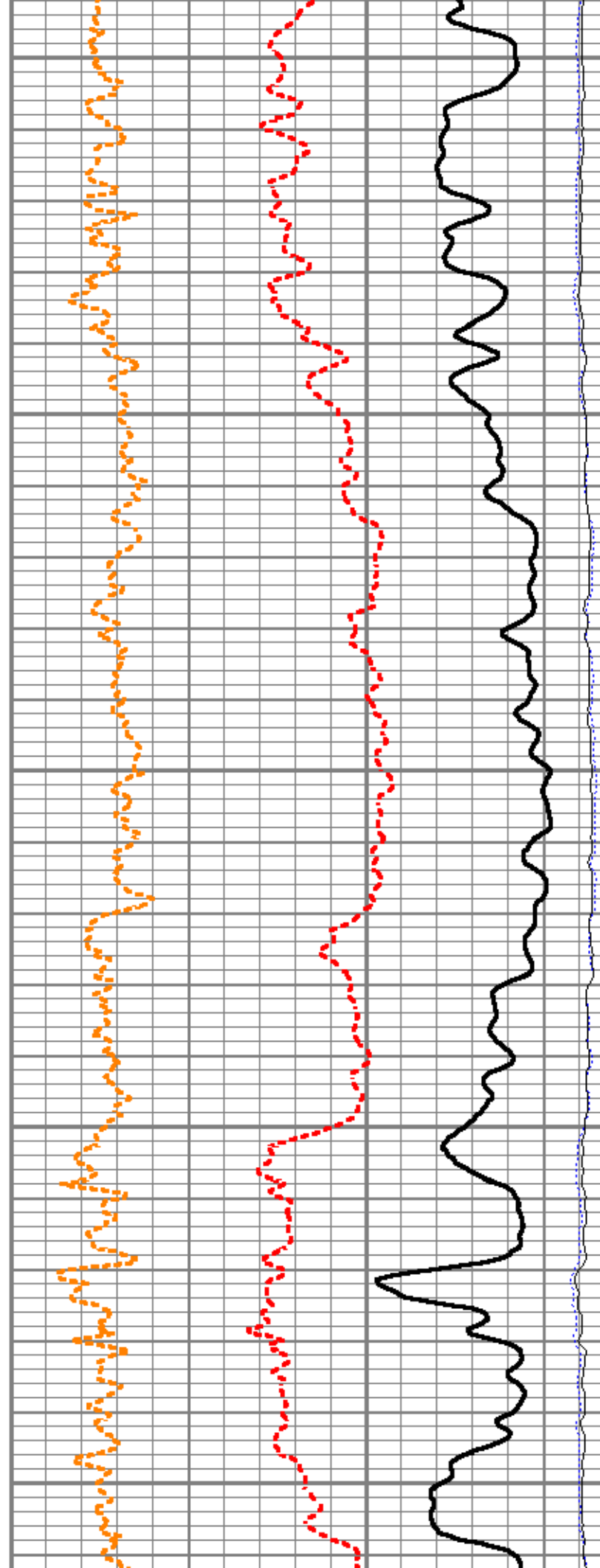
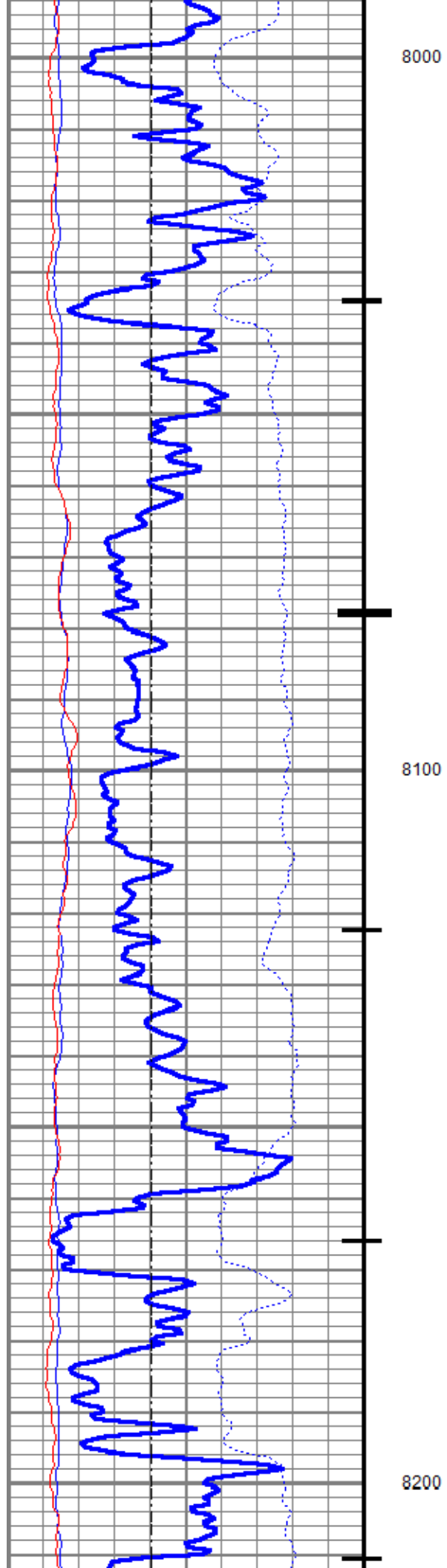


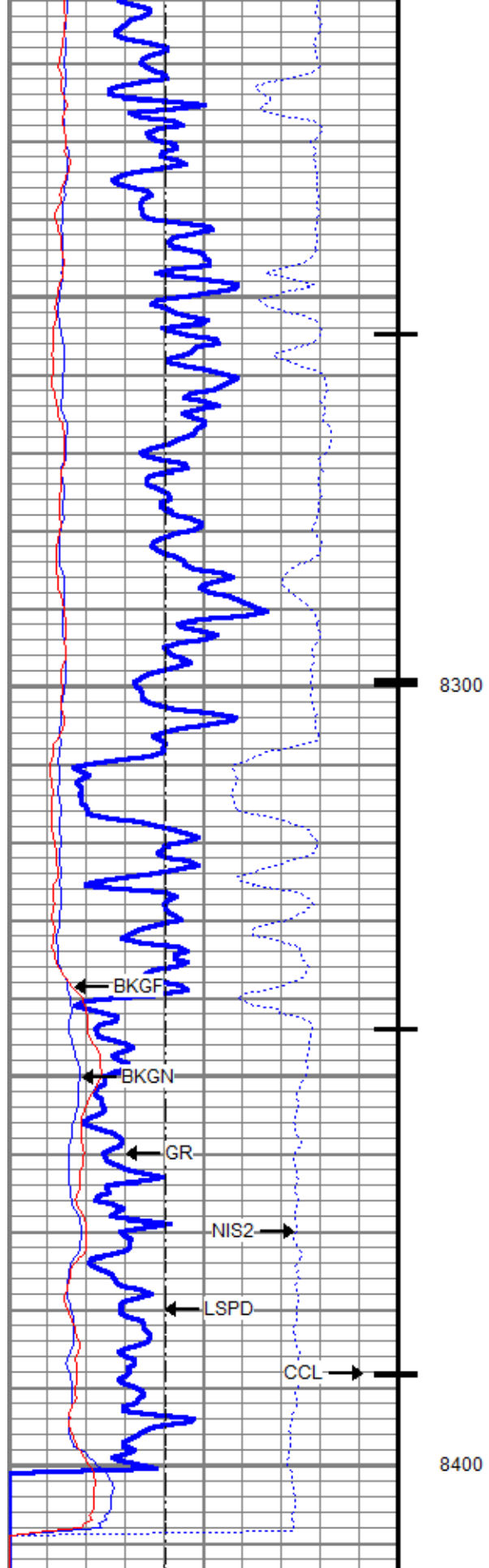




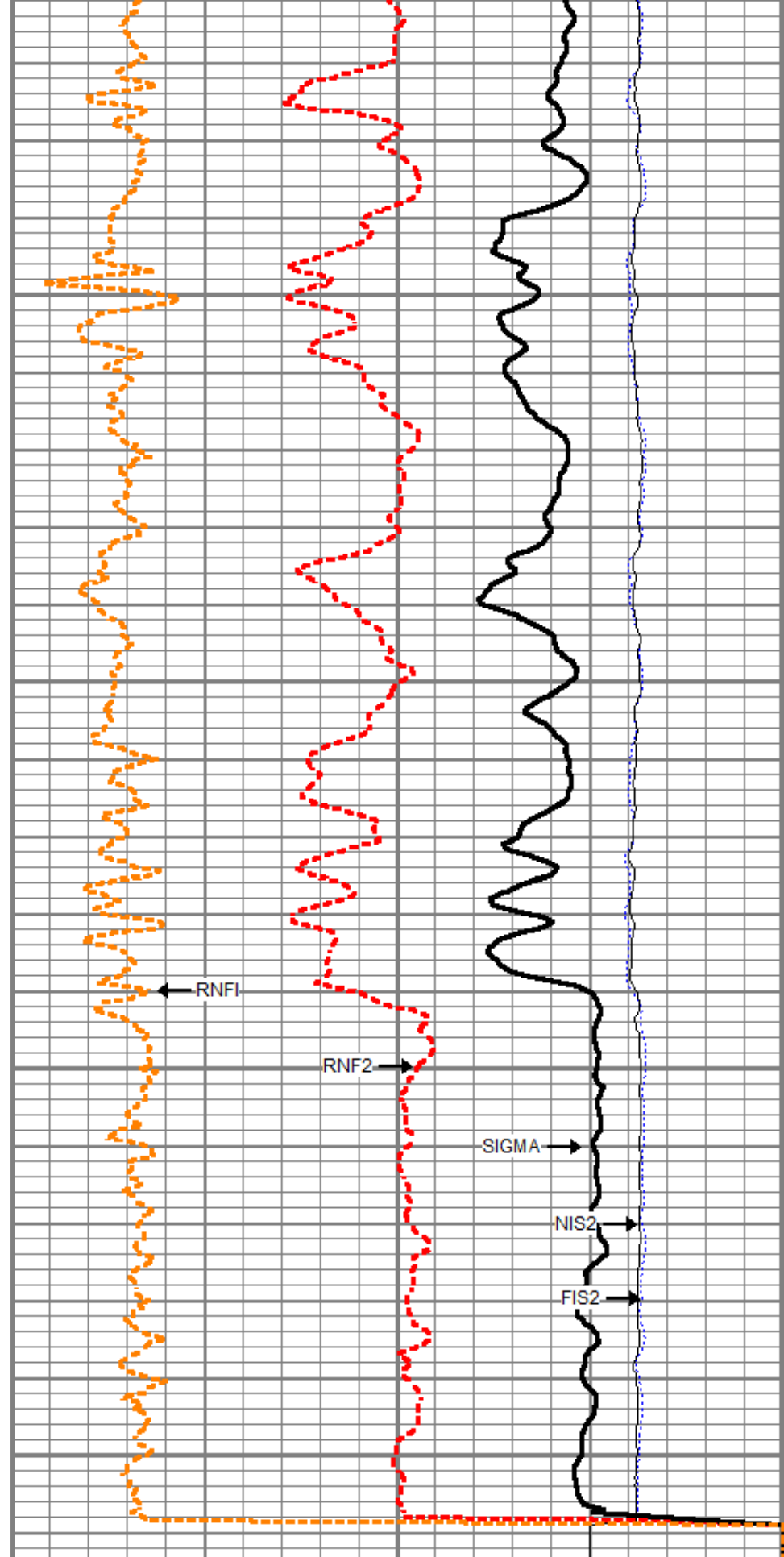








0	Gamma Ray (GAPI)	150
Casing Collar Locator		
-100	Line Speed (ft/min)	100
0	NIRS (cps)	400000



4	RNF2	0
60	SIGMA (cu)	0
4.5	RNFI	0
0	FIS2 (cps)	5000

0	BKGN (cps)	4000
0	BKGF (cps)	2000

0 NIS2 (cps) 0000

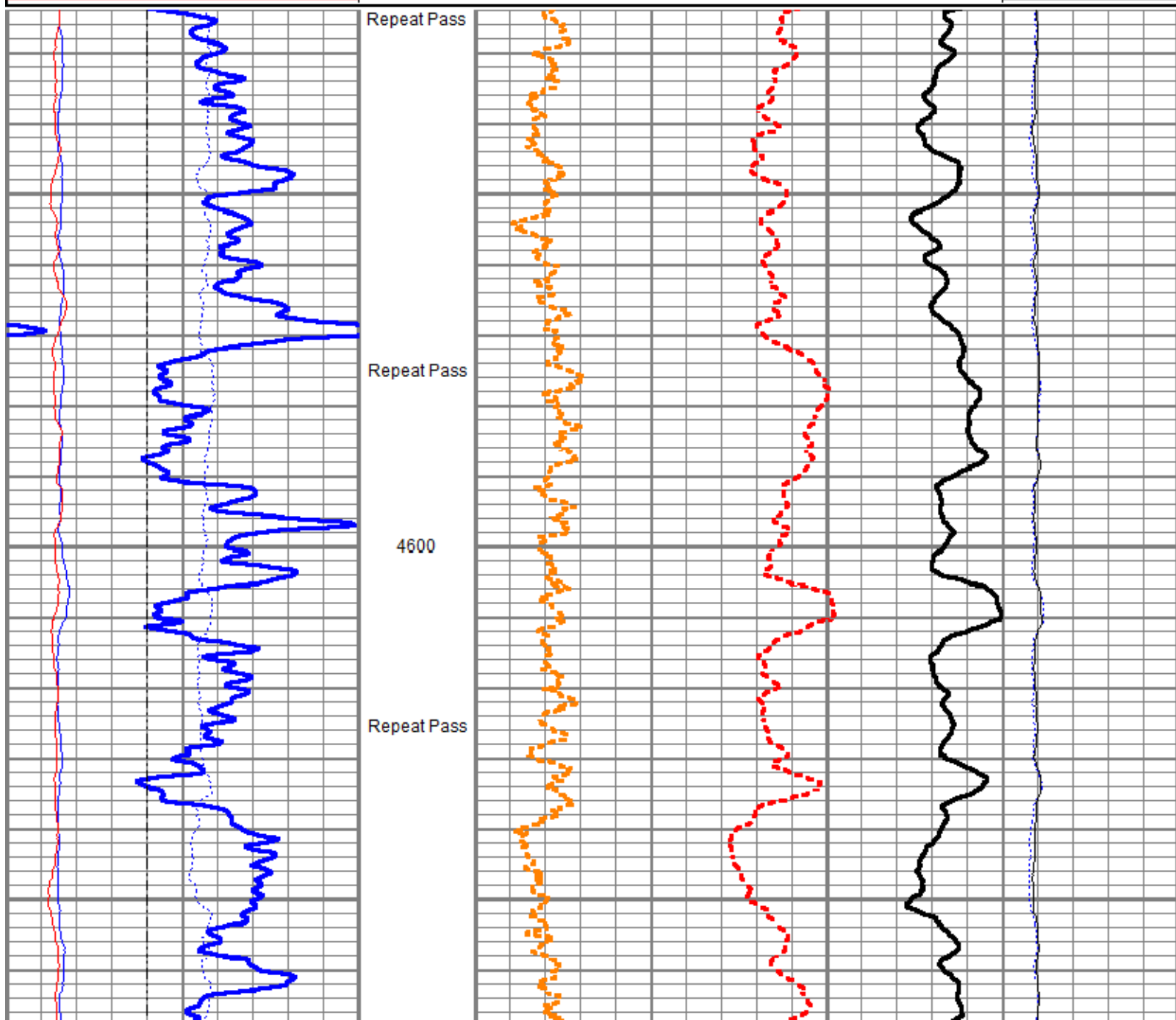


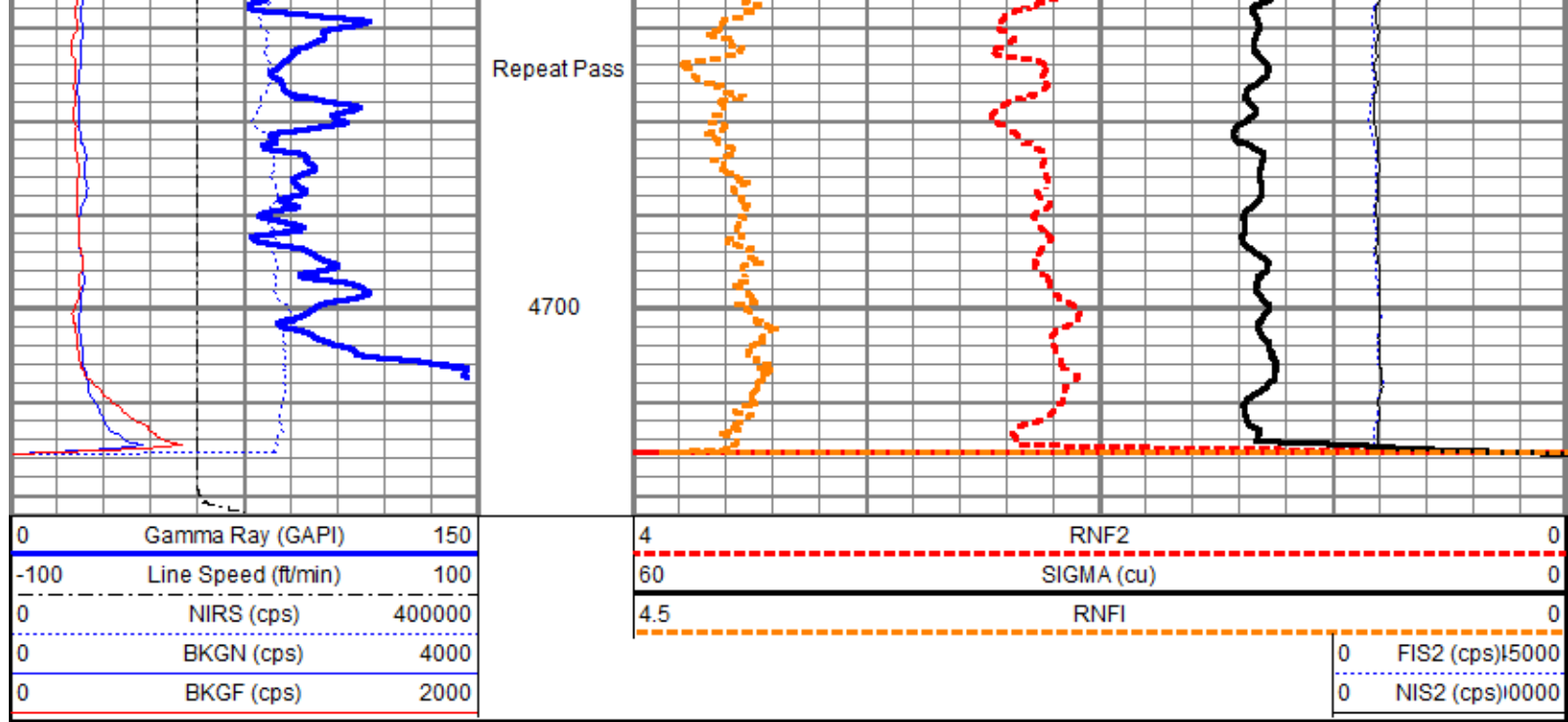
Repeat Pass

Database File tep_federal pa 533-26_rbl_07-16-18\tep_federal pa 533-26_pn_07-17-2018\tep_federal pa 533-26_pn_07-17-18.db
 Dataset Pathname repeat.2
 Presentation Format ros_pdn_hunter
 Dataset Creation Tue Jul 17 23:47:26 2018
 Charted by Depth in Feet scaled 1:240

0	Gamma Ray (GAPI)	150
-100	Line Speed (ft/min)	100
0	NIRS (cps)	400000
0	BKGN (cps)	4000
0	BKGF (cps)	2000

4	RNF2	0
60	SIGMA (cu)	0
4.5	RNFI	0
0	FIS2 (cps)	15000
0	NIS2 (cps)	0000





Sensor	Offset (ft)	Schematic	Description	Length (ft)	O.D. (in)	Weight (lb)
			Titan CHD-16875 GO Titan 1-11/16" Assembled Electric Cable Head w/ 1" Fishing Neck	1.03	1.69	5.40
			HWS_TCU-002 (001705) HWS Telemetry Control Unit (TCU002)	2.30	1.69	10.87
TCUTEMP	14.69					
TCUVOLT	14.69					
GCL_CCL	13.97					
			HWS_GCL-001 (001681) HWS Gamma Ray Collar Locator (1.6875")	2.69	1.69	13.40
GCL_GR	12.50					
GCL_GR	12.50					
Long	6.25		HWS_RAS-RAS002 (003041)	11.75	1.69	55.82

[illegible]