



Pulsed Neutron  
Gamma Ray  
Casing Collar Log

Company TEP Rocky Mountain LLC		Well Federal PA 531-26		Field Parachute		County Garfield		State Colorado	
Location:		SEC 26 TWP 6S RGE 95W		API #: 05-045-23726		Other Services		RBL	
Permanent Datum		Ground Level		Elevation		5636.9'		K.B. 5660.9'	
Log Measured From		Kelly Bushing		24 FT				D.F. 5659.9'	
Drilling Measured From		Kelly Bushing						G.L. 5636.9'	
Date	Run Number	17-JUL-2018							
Depth Driller		One							
Depth Logged		8908 FT							
Bottom Logged Interval		8840 FT							
Top Log Interval		8835 FT							
Open Hole Size		5049 FT							
Type Fluid		8.750"							
Density / Viscosity		Water							
Max. Recorded Temp.		8.34 lb/gal							
Estimated Cement Top		---							
Time Well Ready		ROA							
Time Logger on Bottom		15.39							
Equipment Number		HD-0359							
Location		Grand Junction, CO							
Recorded By		A. Ellsworth							
Witnessed By		Dustin Welsh							
Borehole Record		Bit		From		To		Size	
Run Number		Weight		From		To		Tubing Record	
Casing Record		Size (in)		Wgt (lbs/ft)		Grade		Top	
Surface Casing		9 5/8		32.3		H-40		Surface	
Intermediate #1		4 1/2		11.6		P-110		Surface	
Intermediate #2								1103 FT	
Inner								8865 FT	

<<< Fold Here >>>

All interpretations are opinions based on inferences from electrical or other measurements and we cannot and do not guarantee the accuracy or correctness of any interpretation, and we shall not, except in the case of gross or willful negligence on our part, be liable or responsible for any loss, costs, damages, or expenses incurred or sustained by anyone resulting from any interpretation made by any of our officers, agents or employees. These interpretations are also subject to our general terms and conditions set out in our current Price Schedule.

Comments

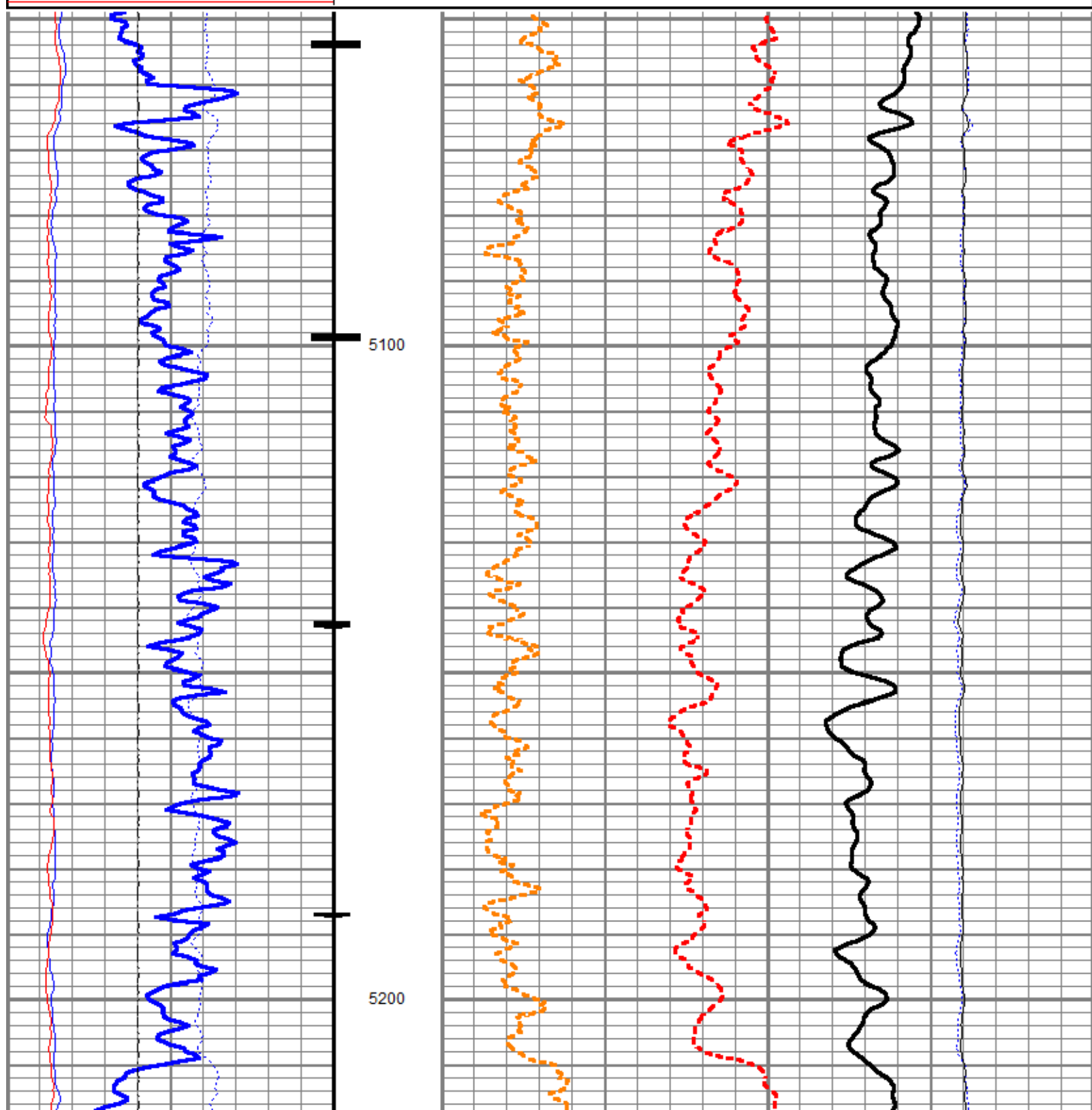
Log ran as per customer request  
Depth referenced to Reliance Bond Log dated 16-JUL-2018  
Log ran from 8835 FT to 5049 FT  
Pulsed Neutron Data logged with the Hunter RAS Tool  
Thank you for choosing Reliance Oilfield Services, LLC!

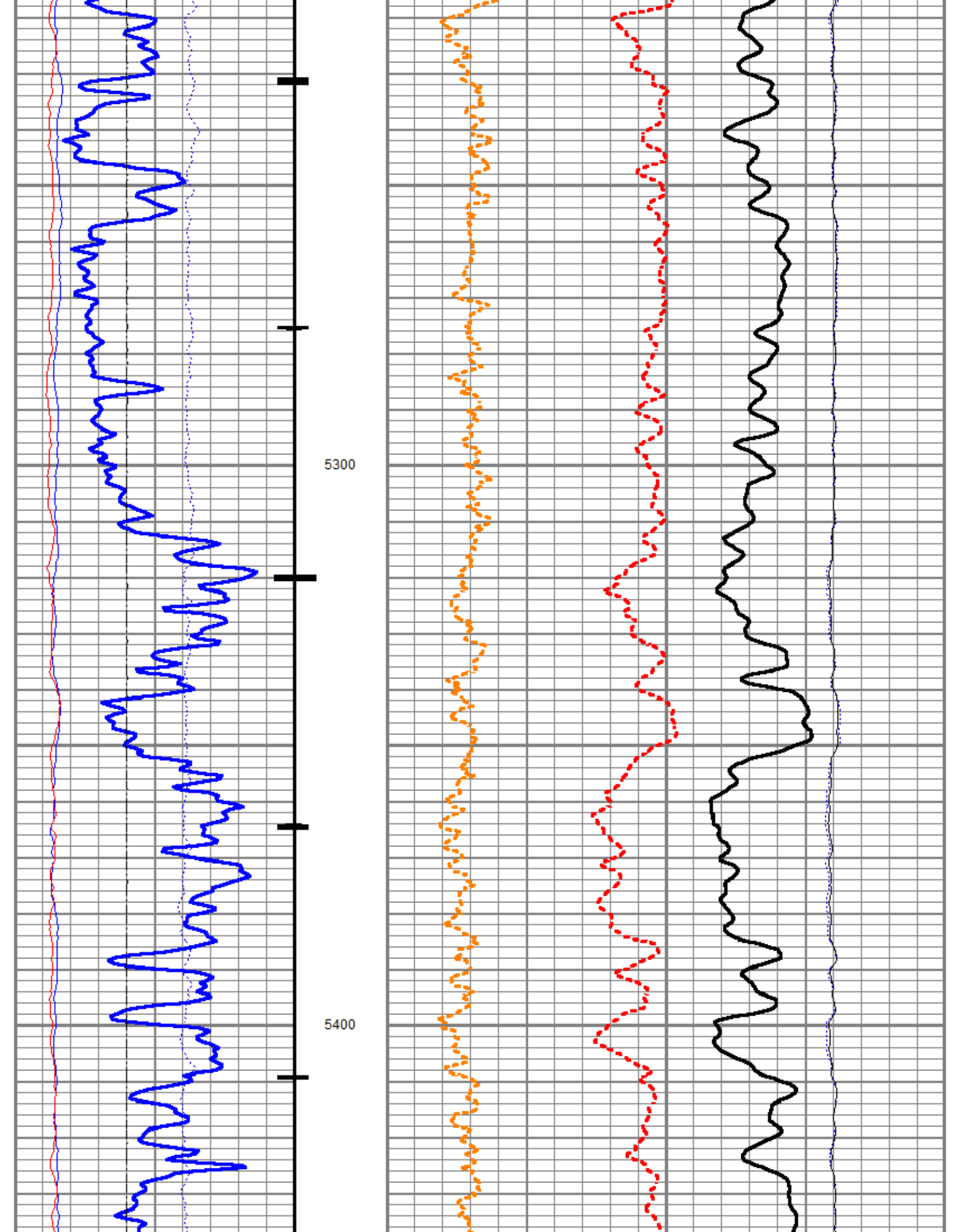


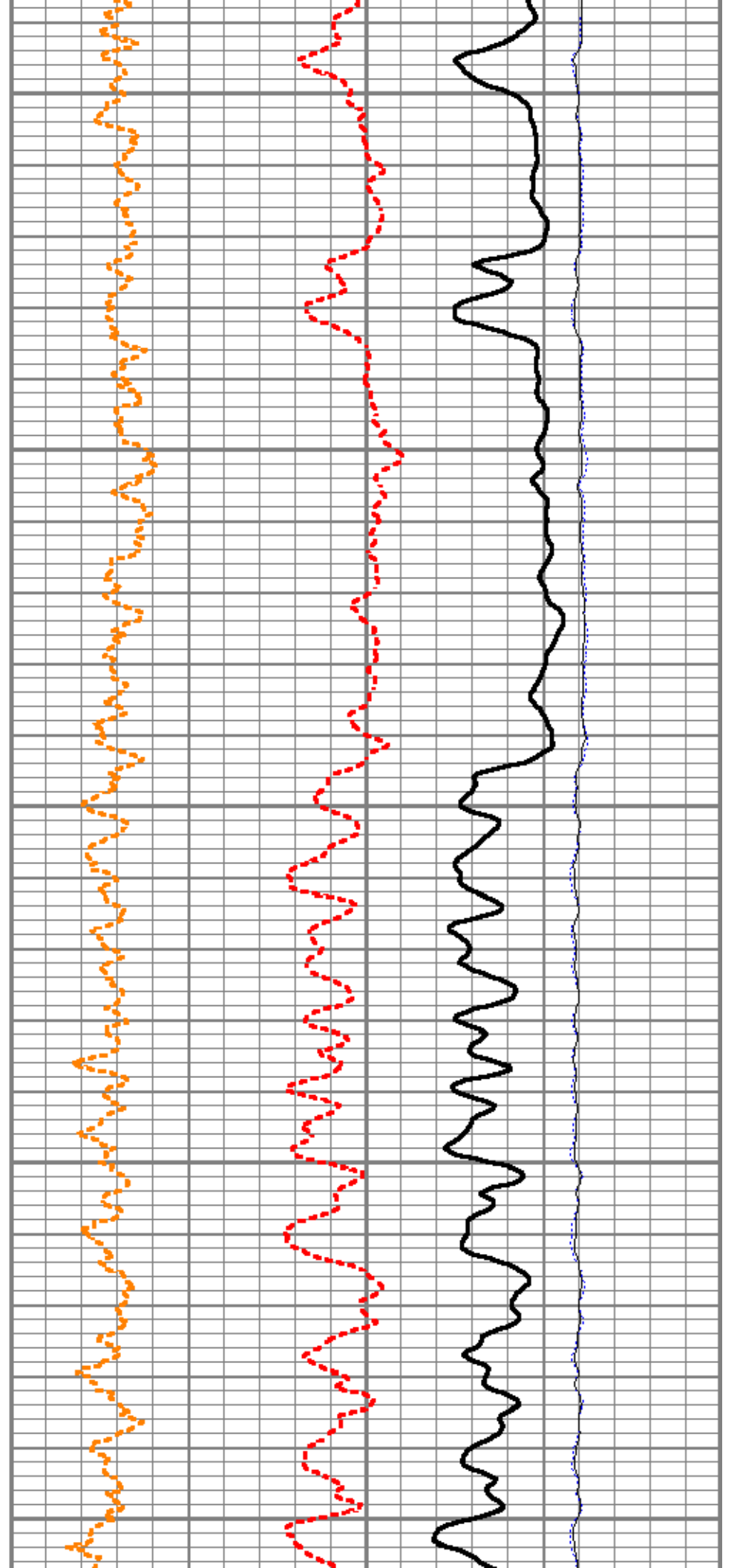
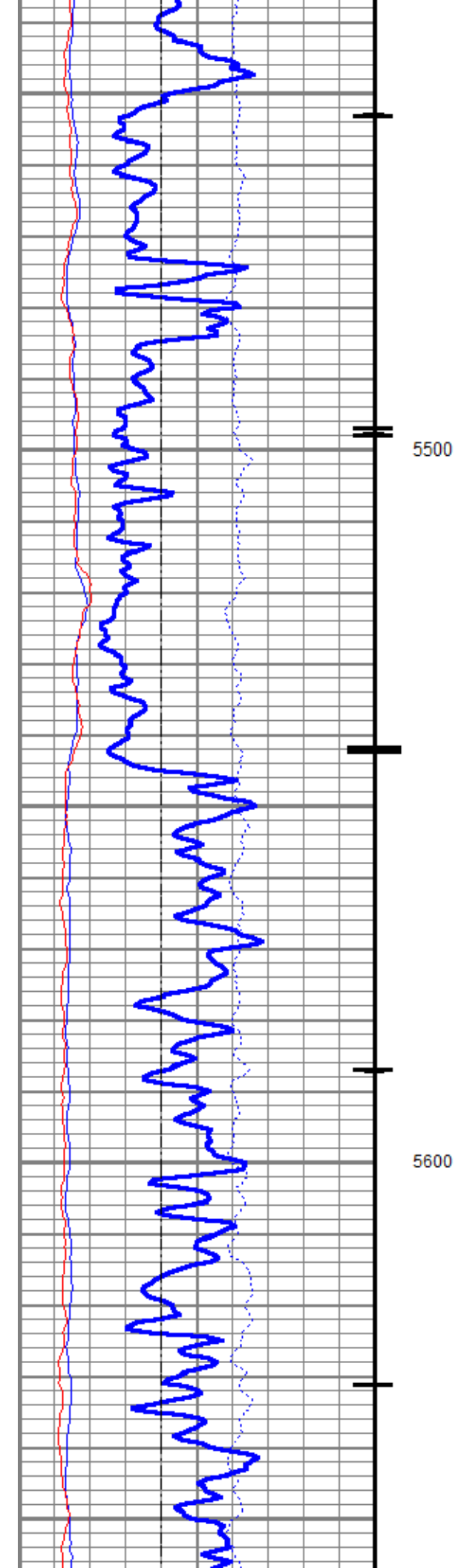
Main Pass

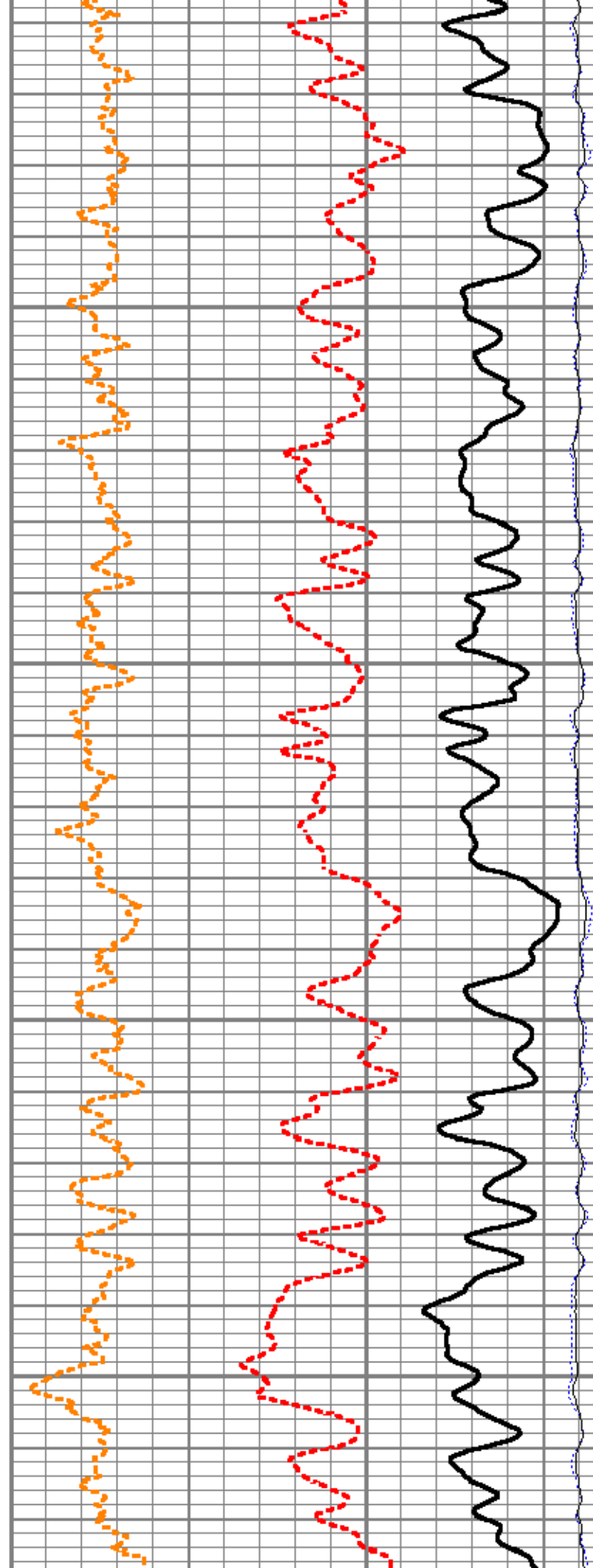
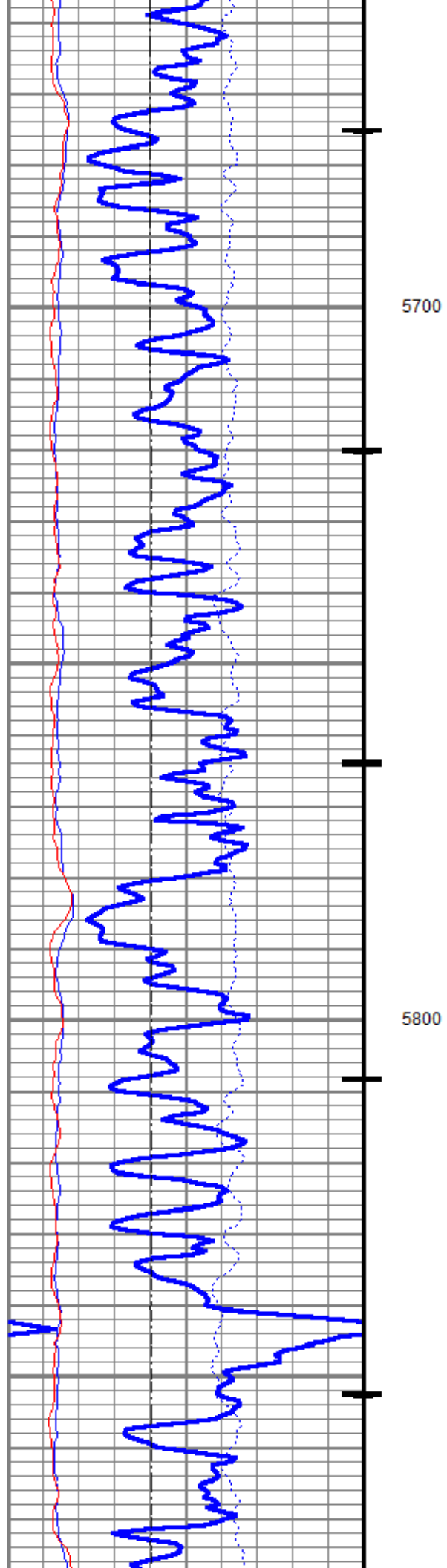
Database File	tep_federal pa 531-26_rbl_07-16-18\pn\tep_federal pa 531-26_pn_07-17-18.db
Dataset Pathname	shift/merge1
Presentation Format	ros_pdn_hunter
Dataset Creation	Fri Jul 20 15:56:45 2018
Charted by	Depth in Feet scaled 1:240

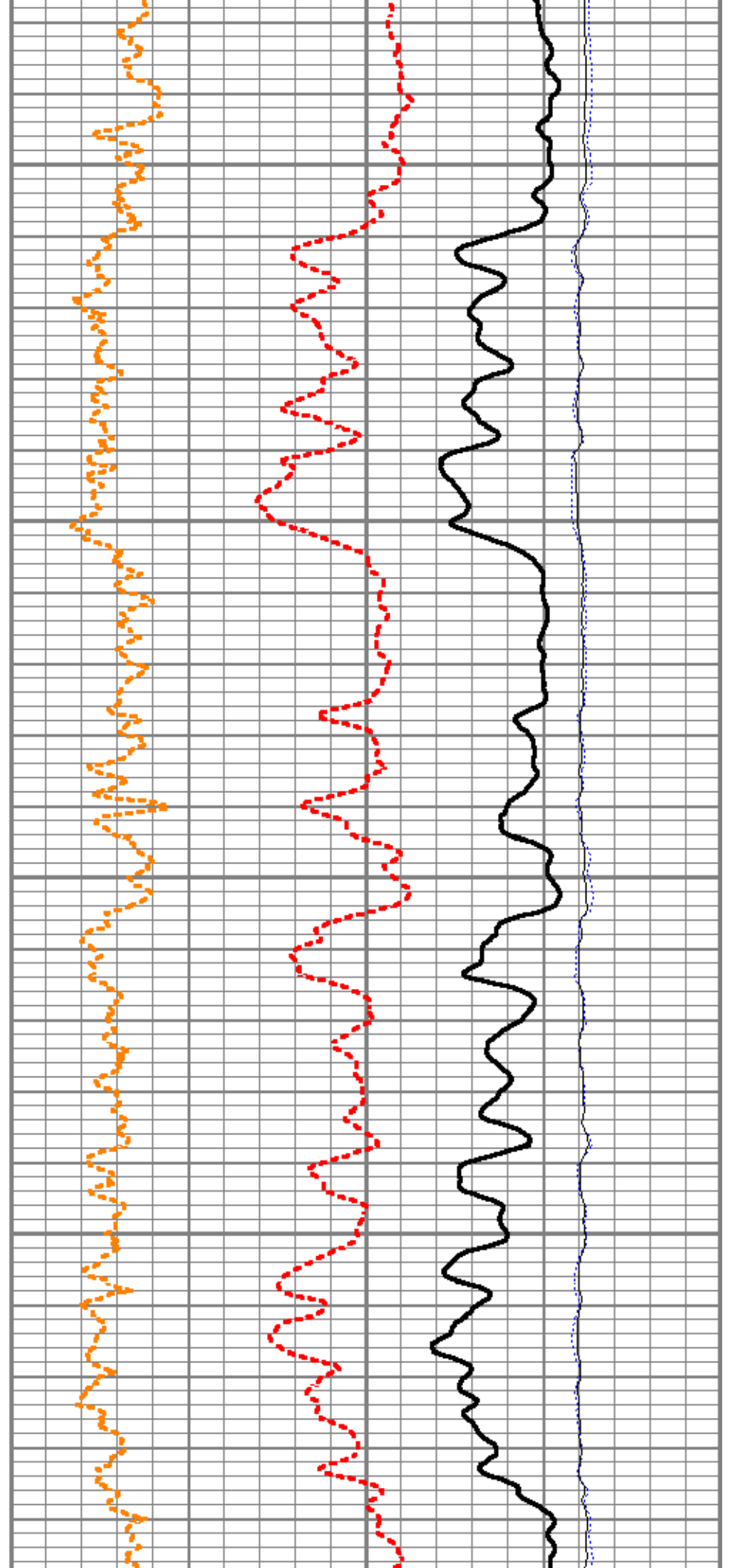
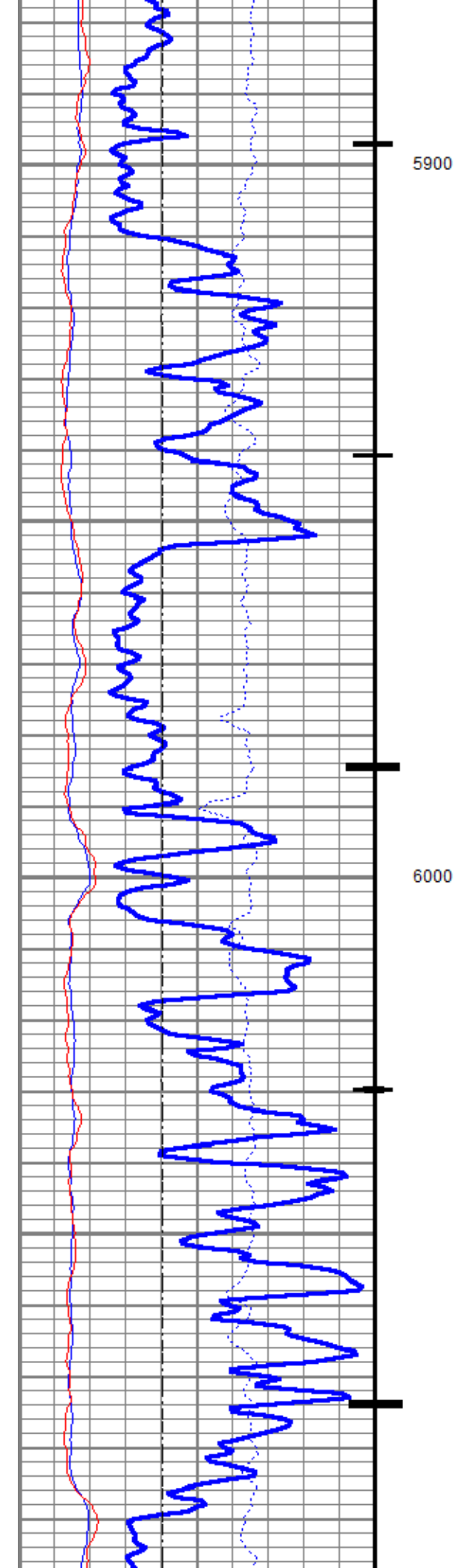
0	Gamma Ray (GAPI)	150	4	RNF2	0
	Casing Collar Locator		60	SIGMA (cu)	0
-100	Line Speed (ft/min)	100	4.5	RNF1	0
0	NIRS (cps)	400000			0 FIS2 (cps) 5000
0	BKGN (cps)	4000			0 NIS2 (cps) 10000
0	BKGF (cps)	2000			

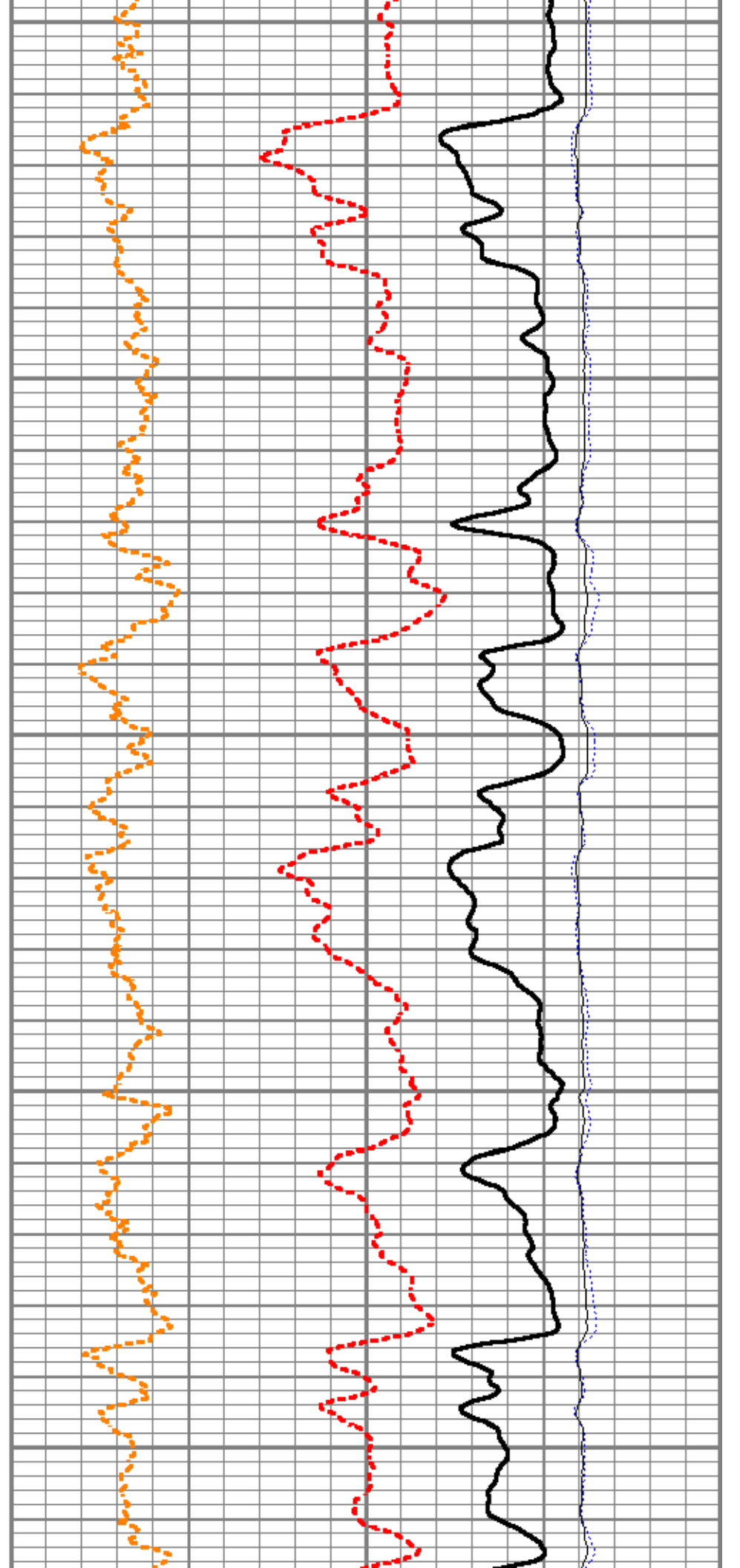
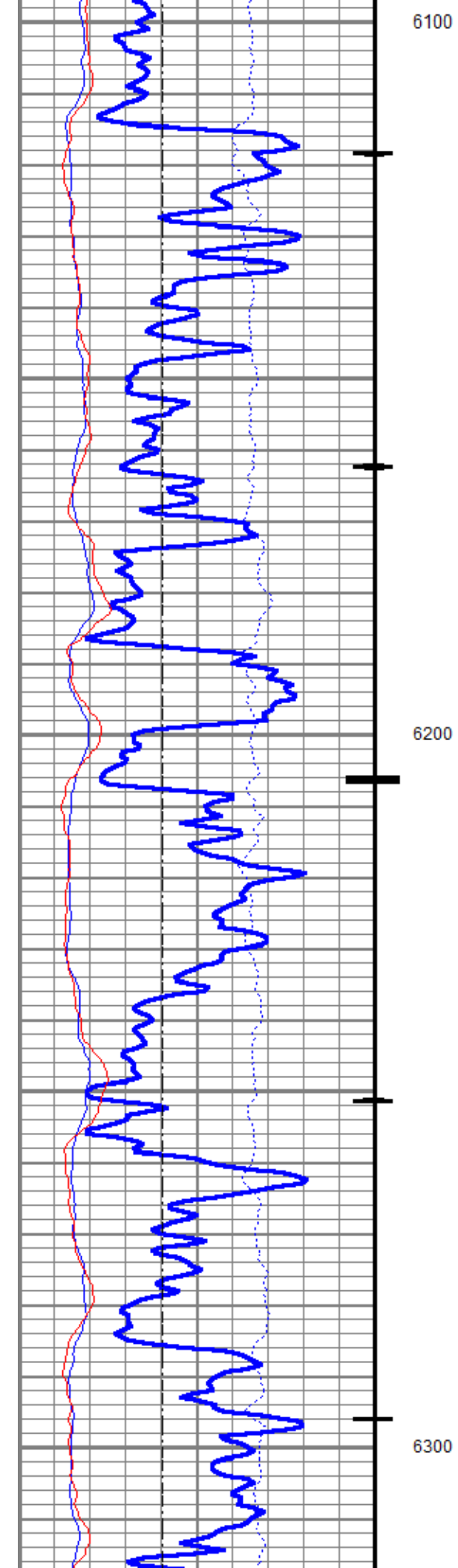




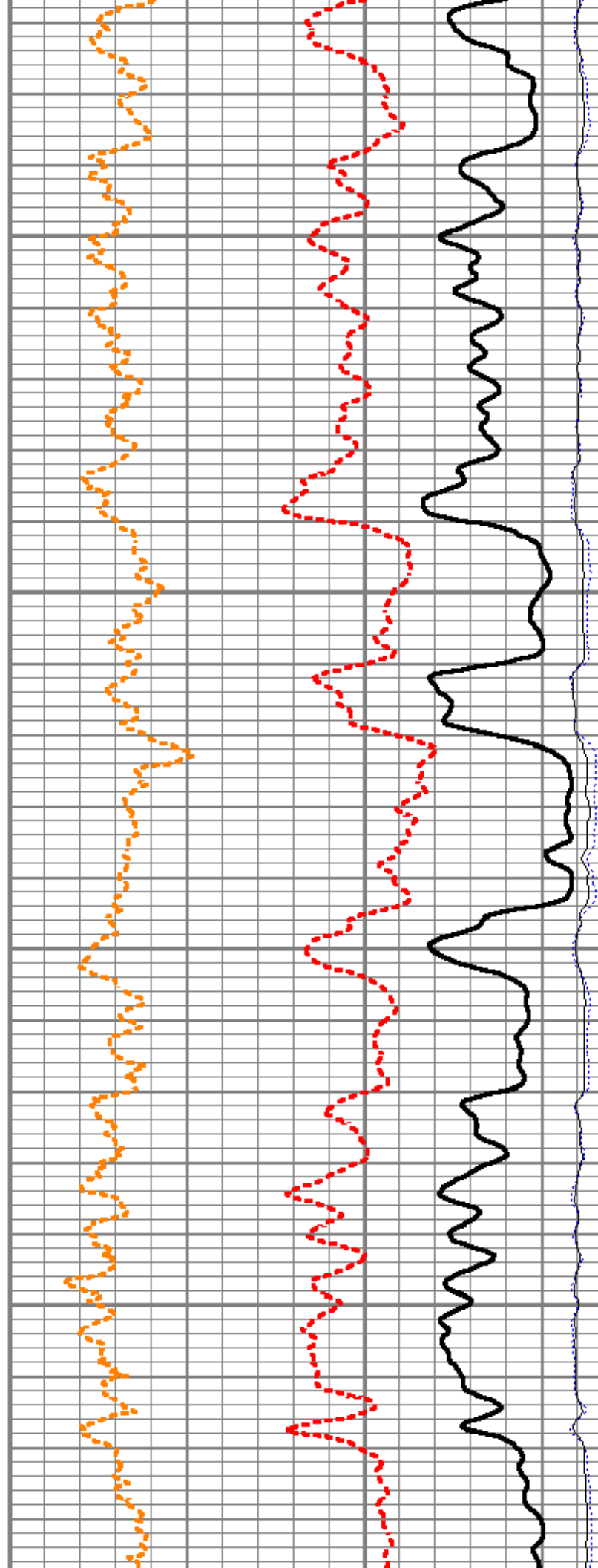
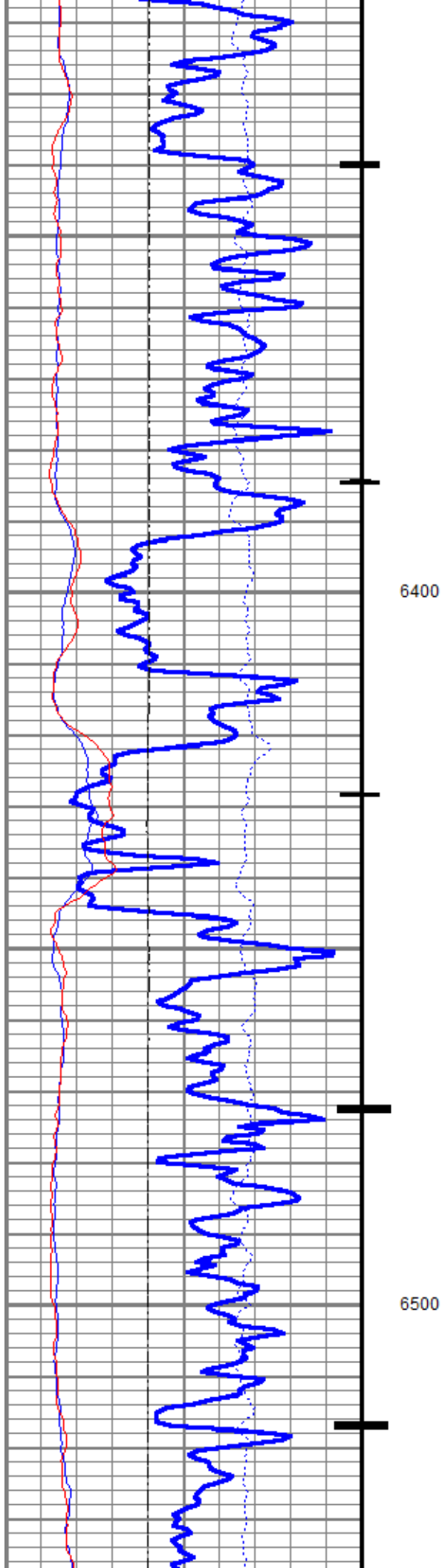




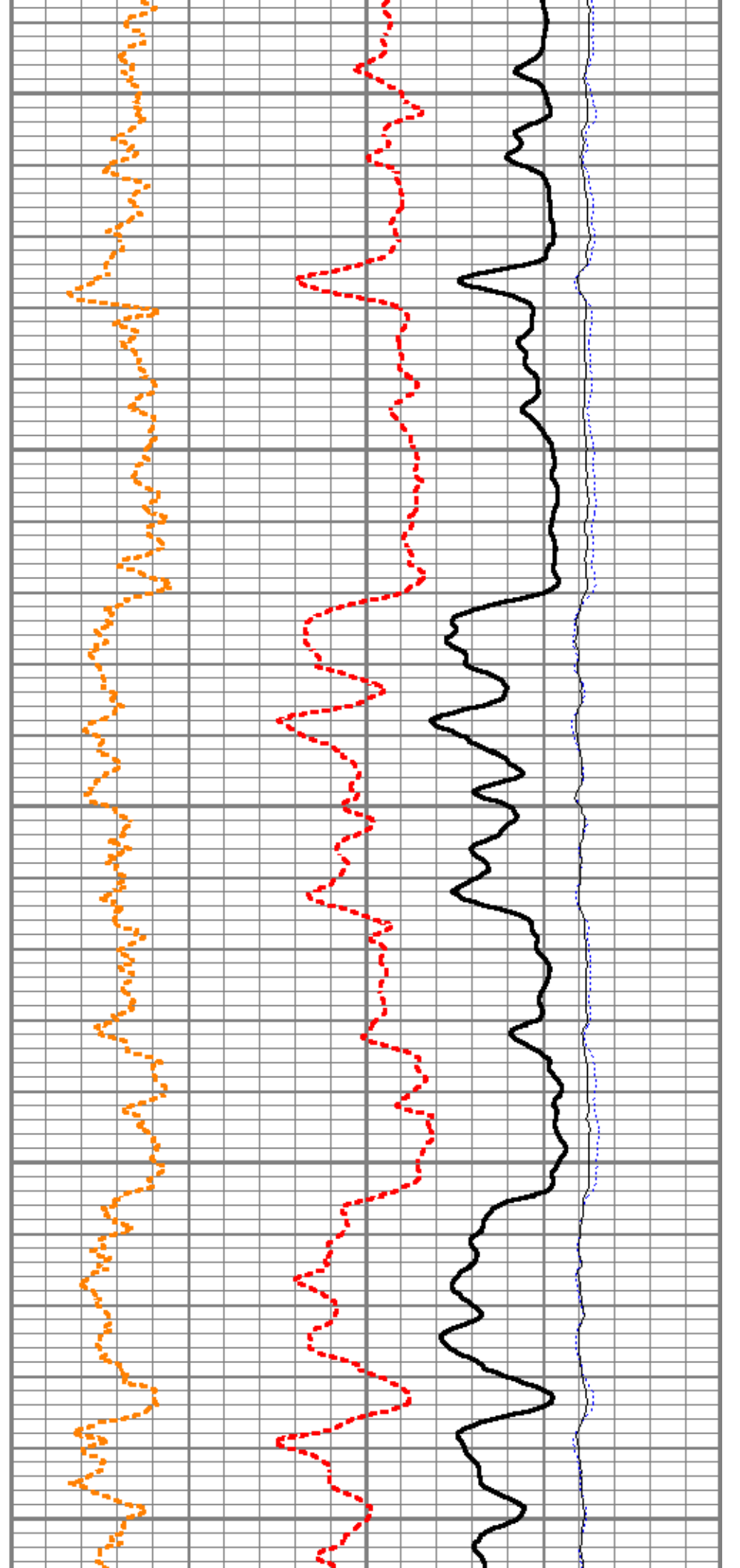
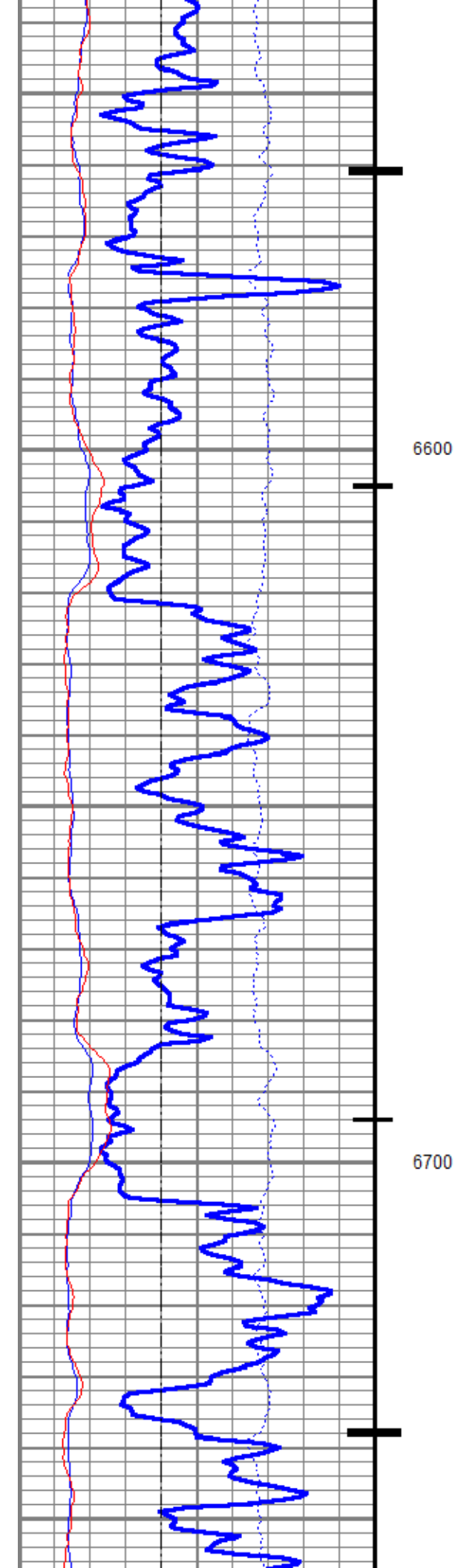


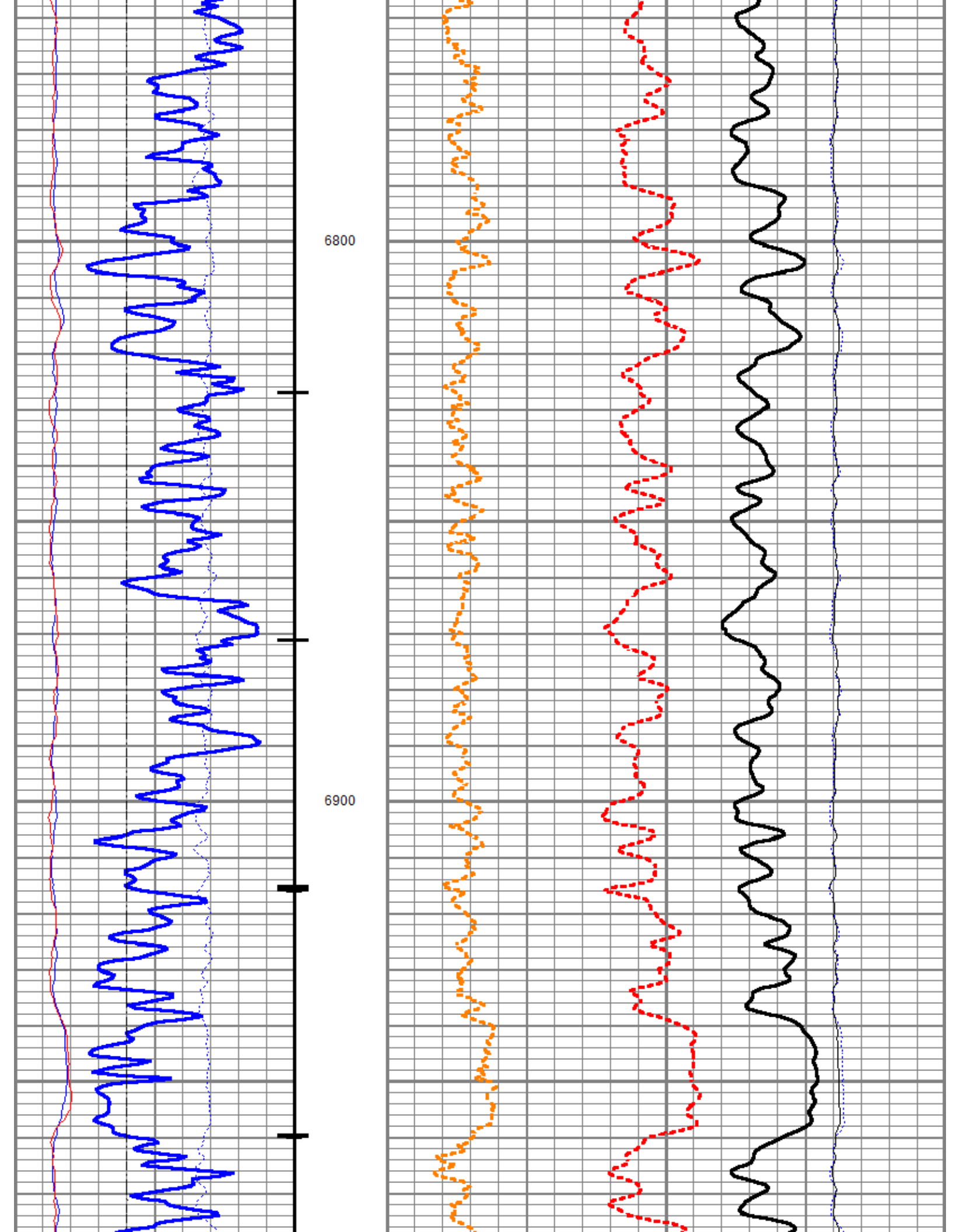


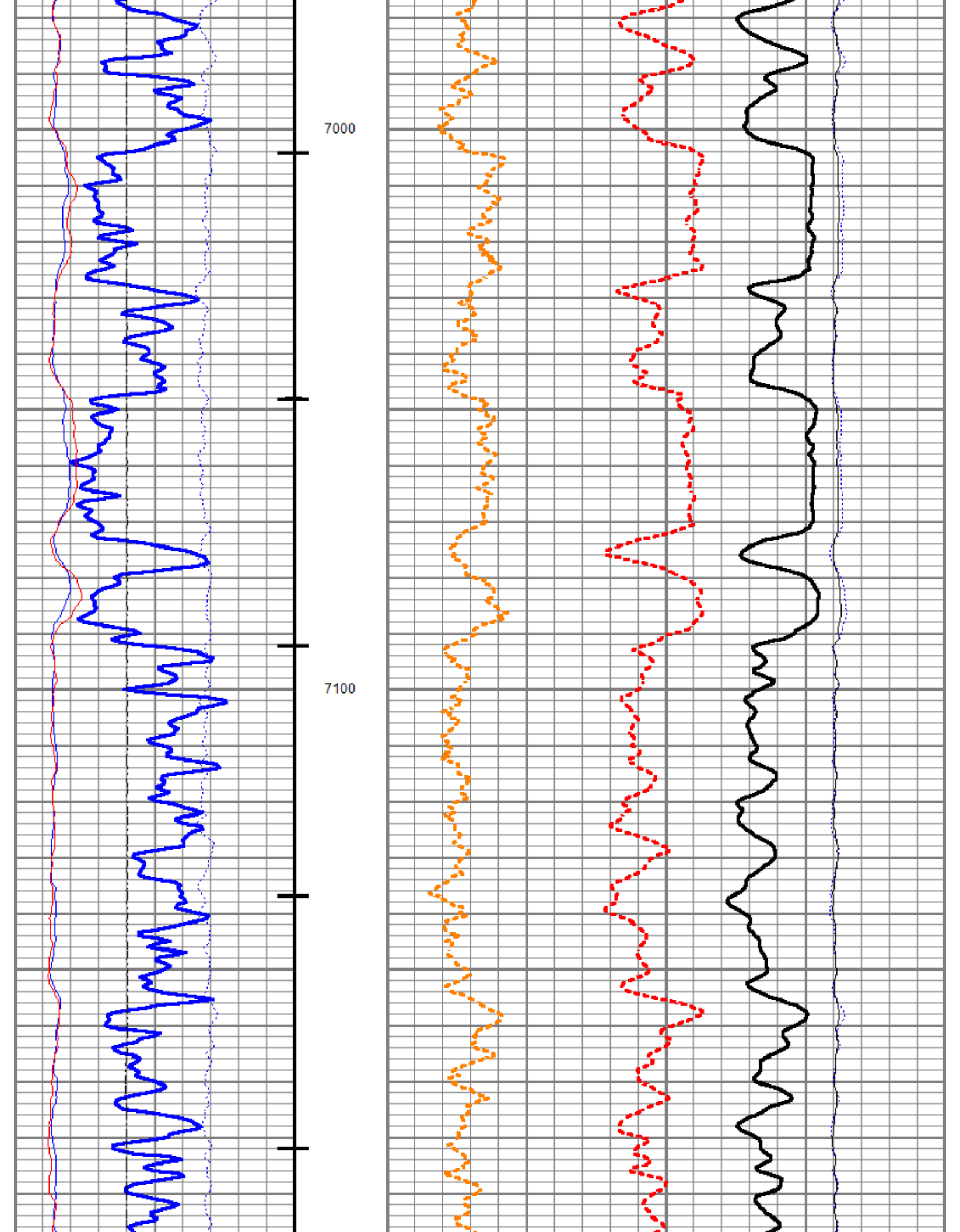


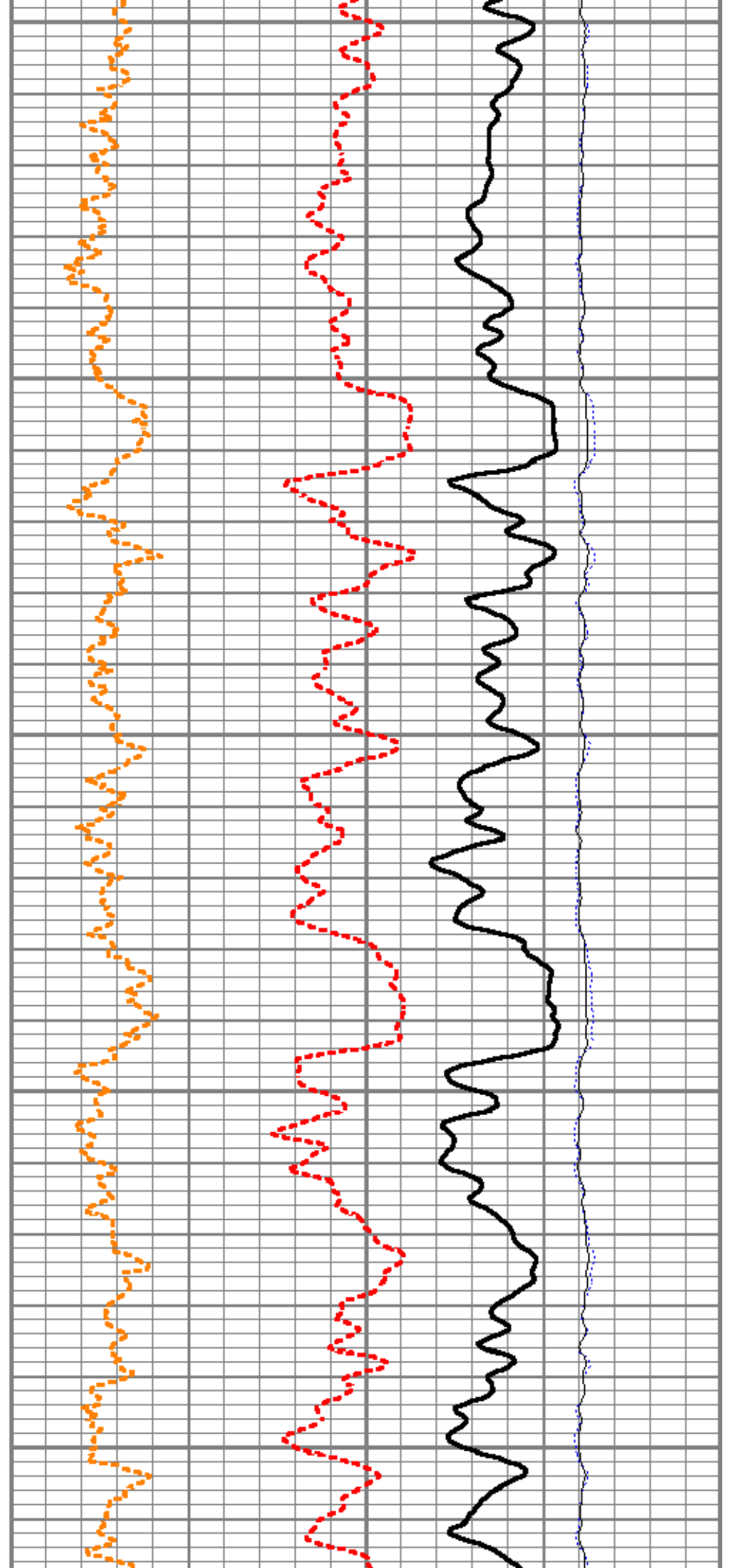
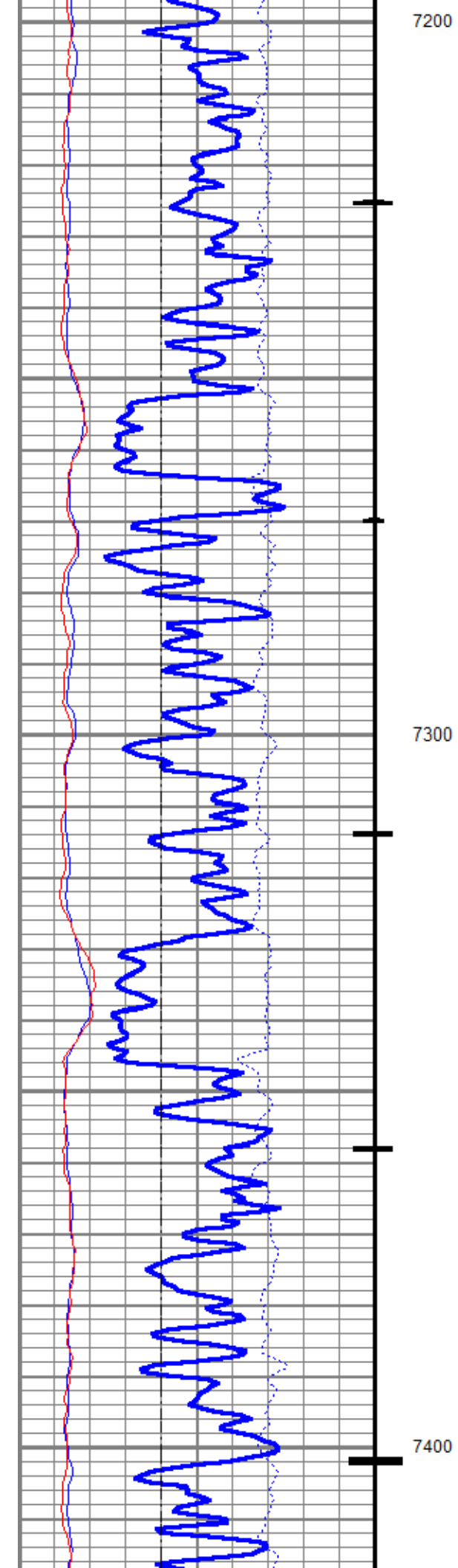


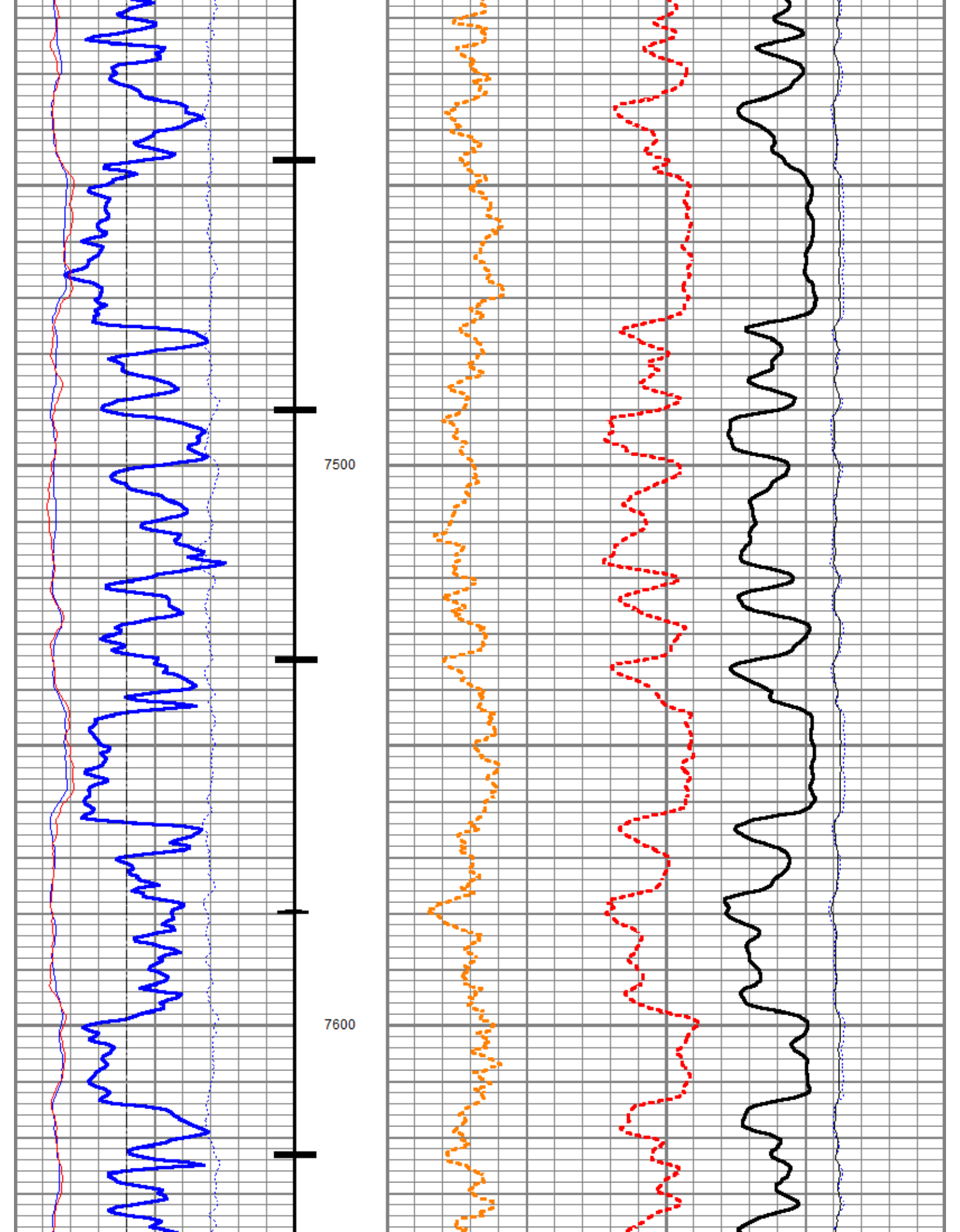


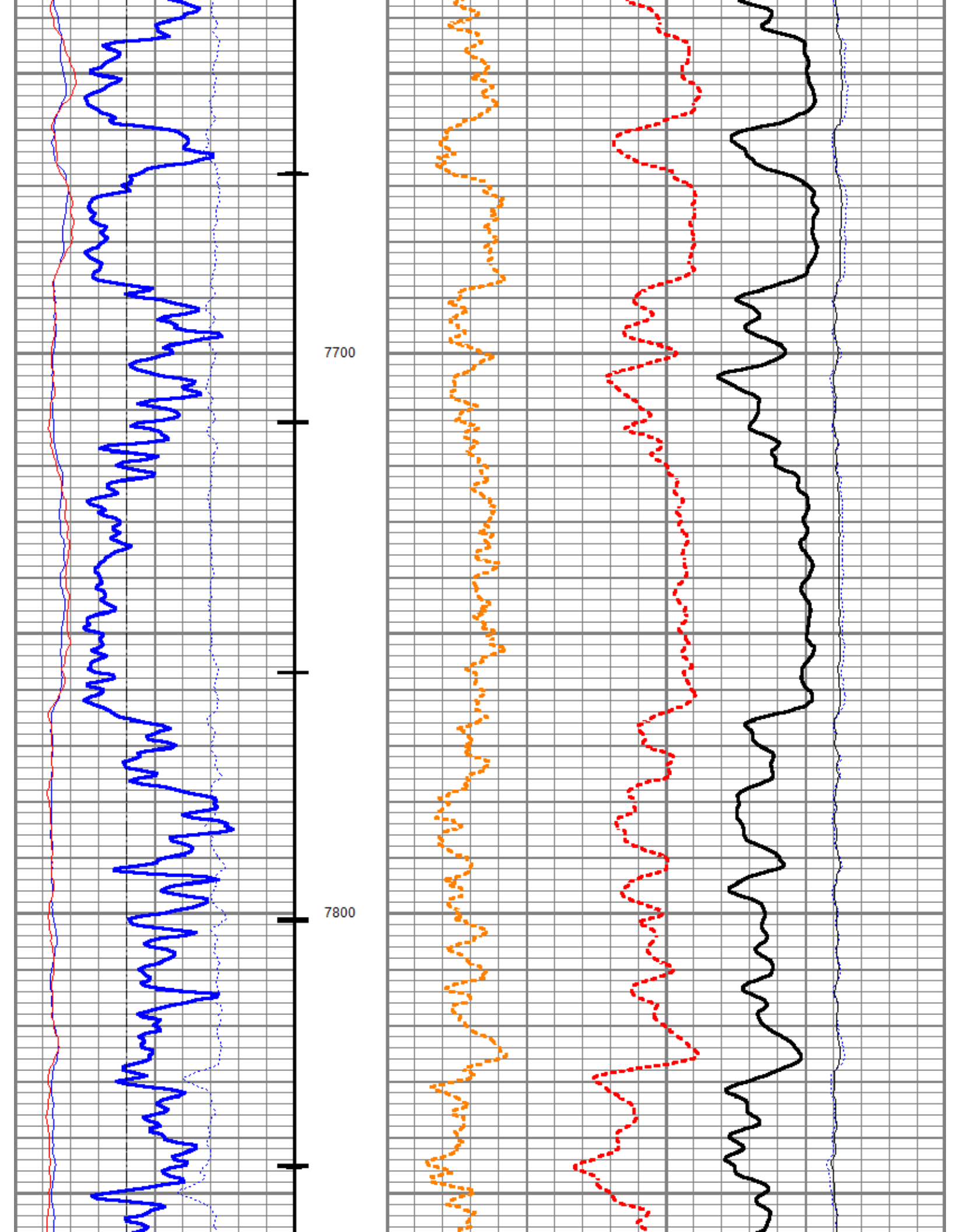


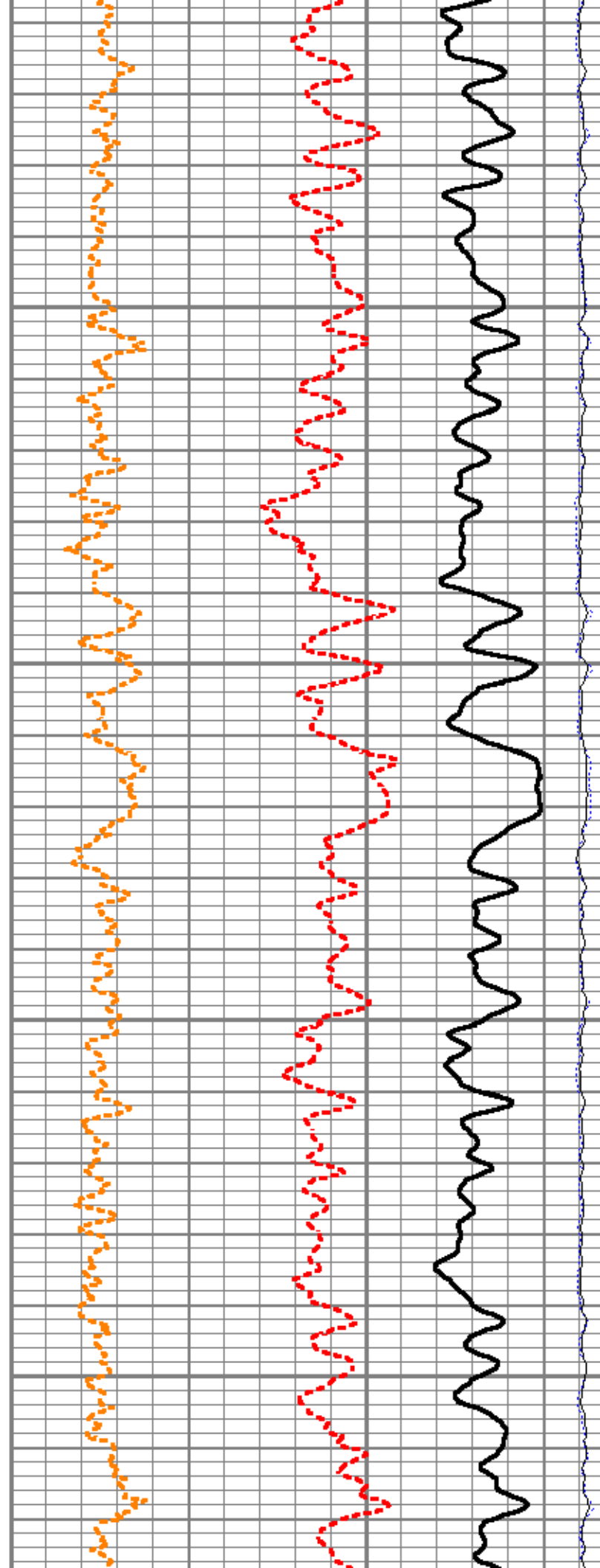
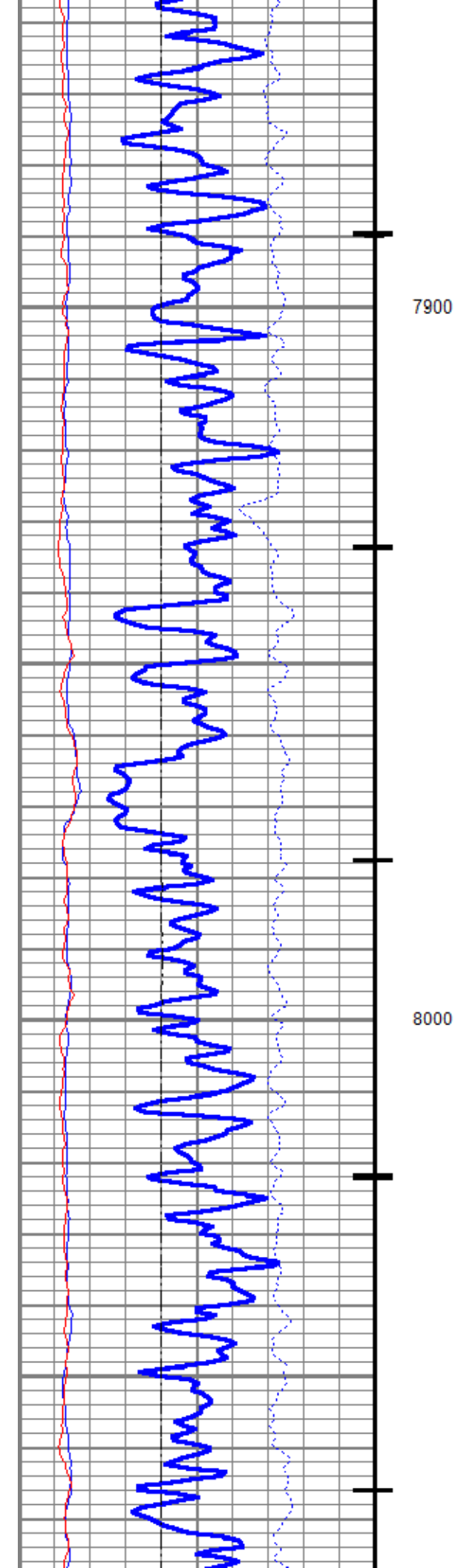




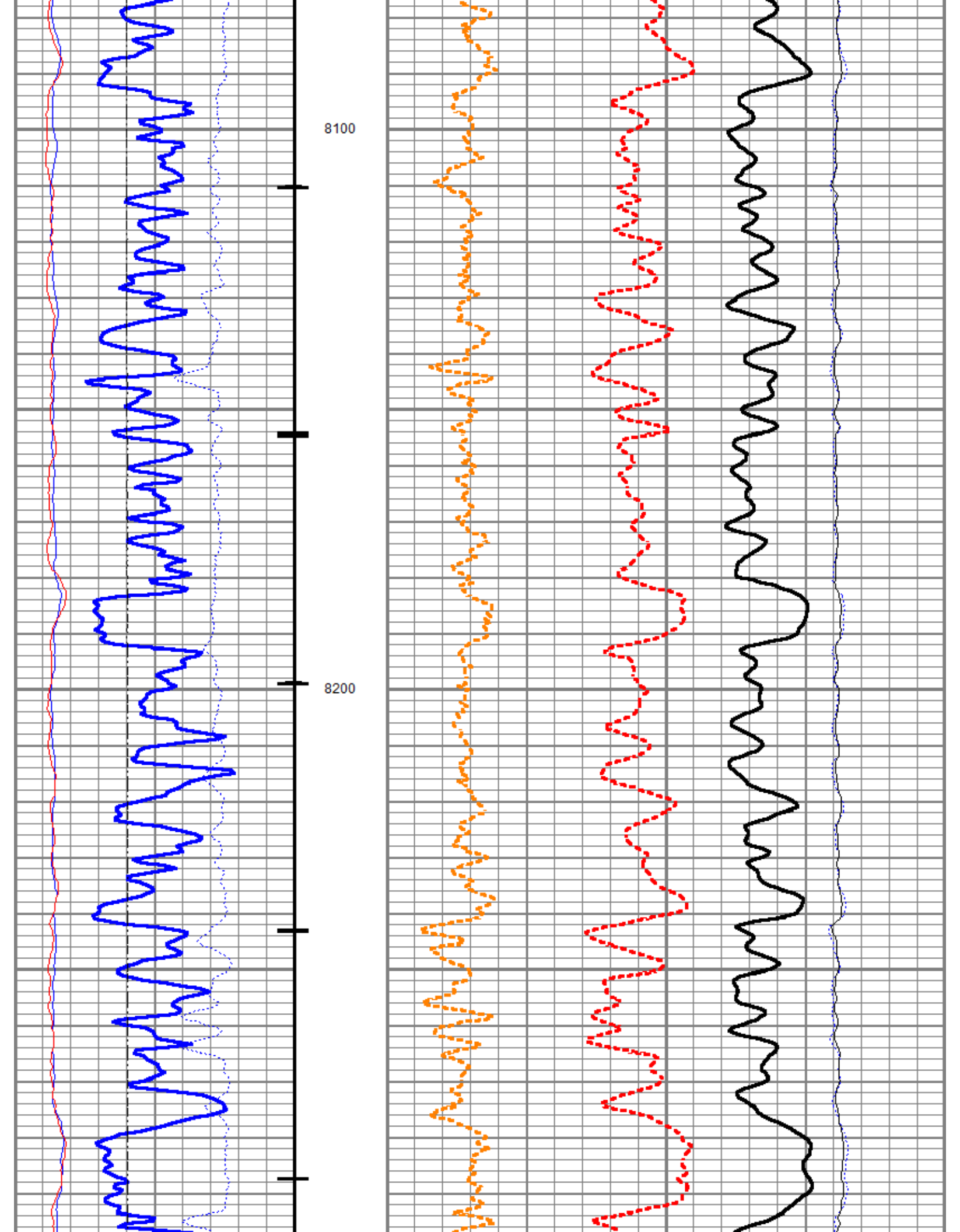


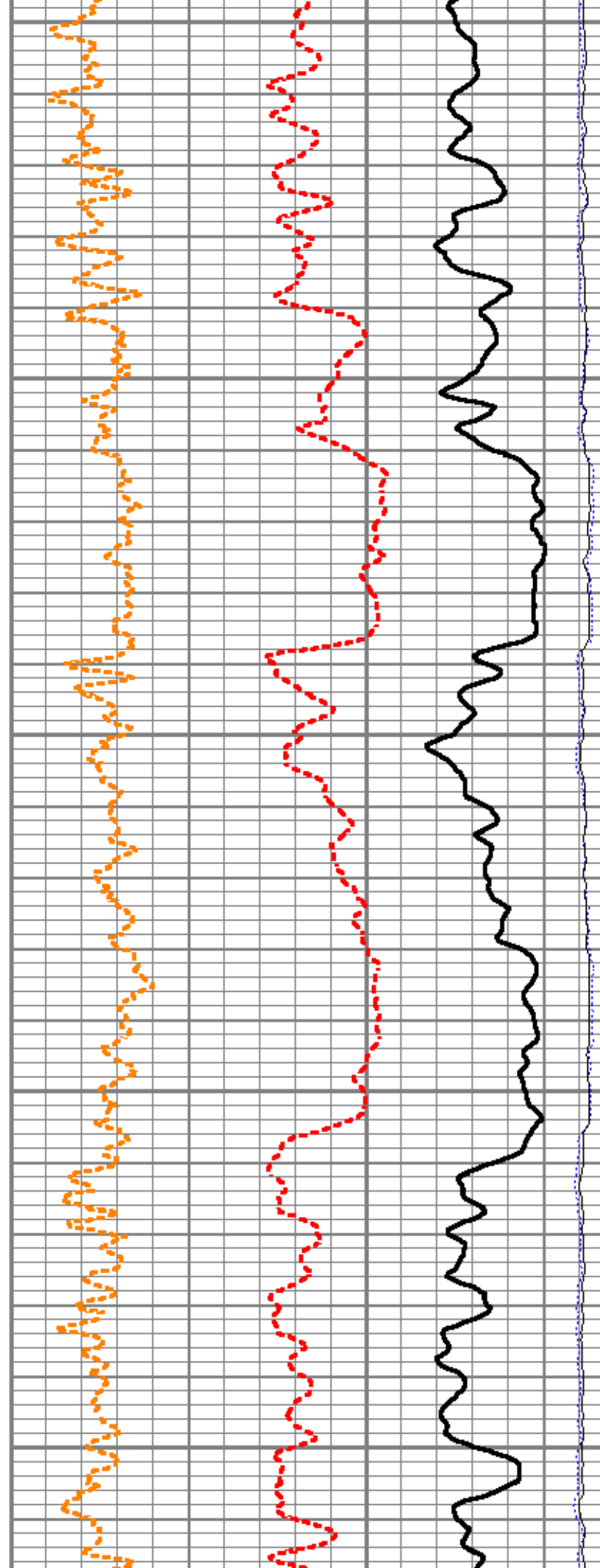
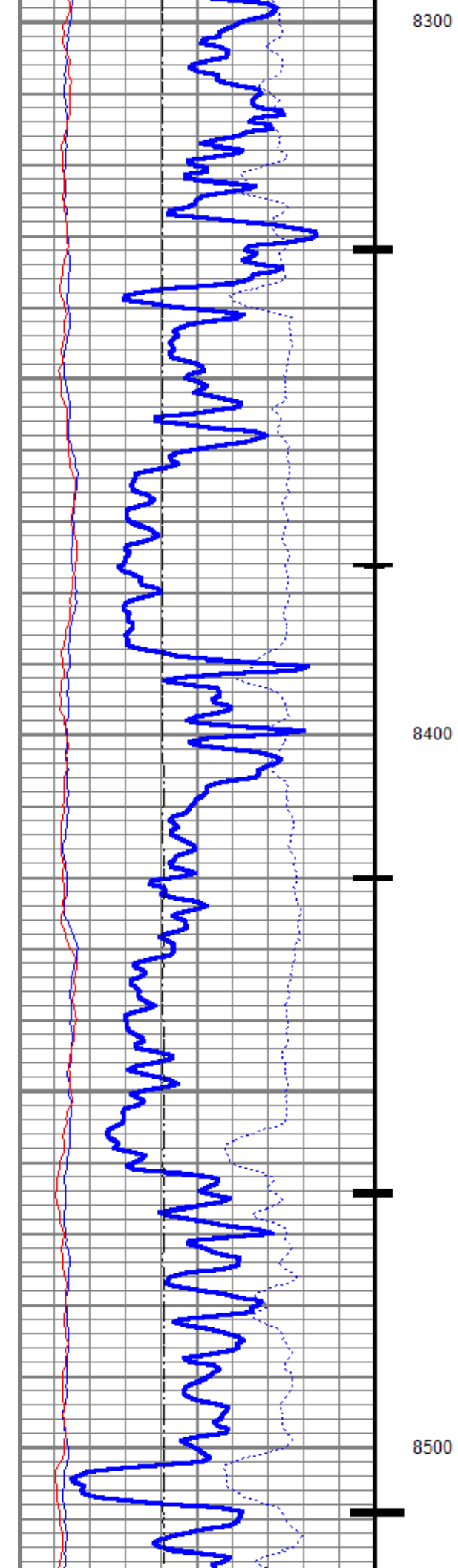


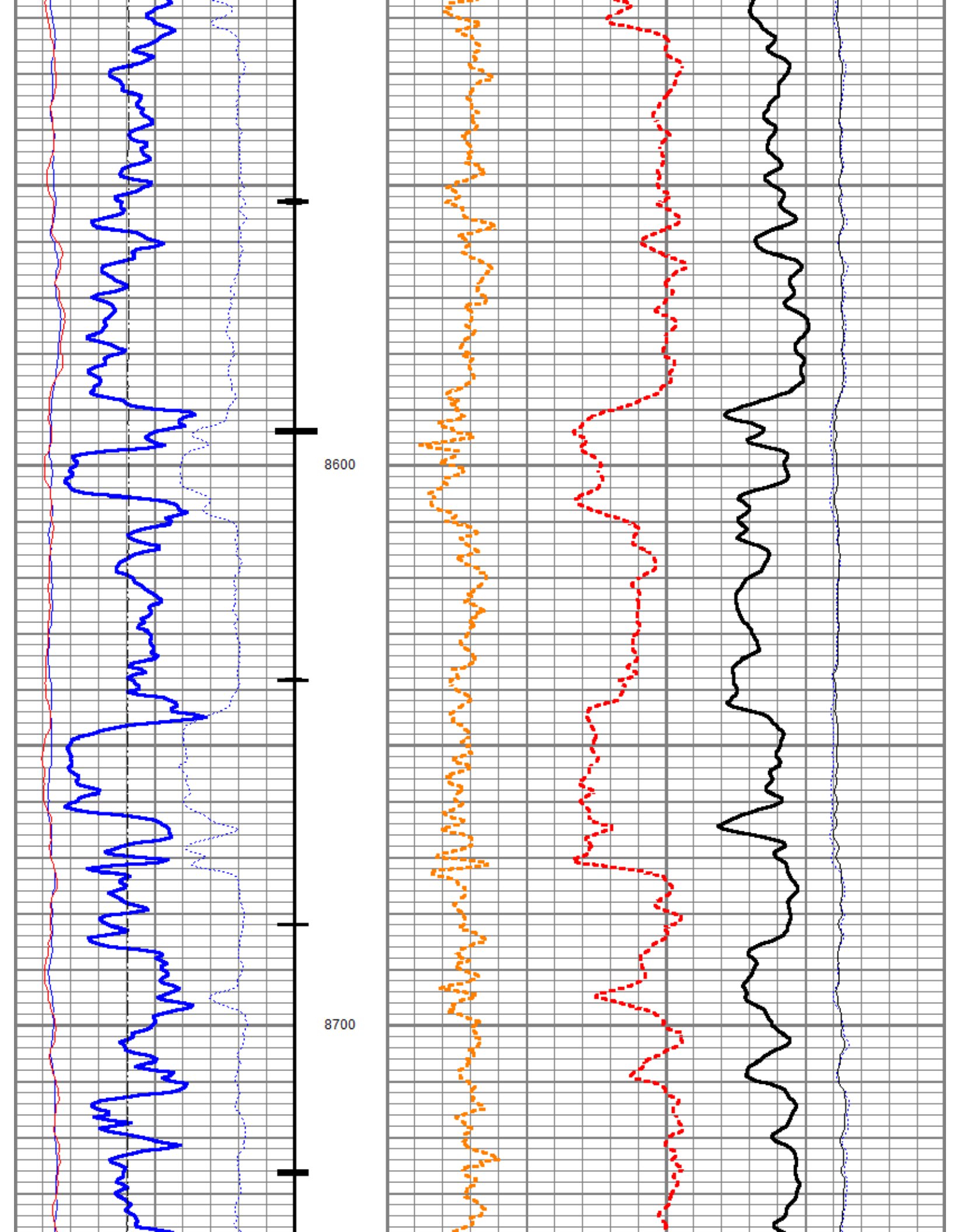


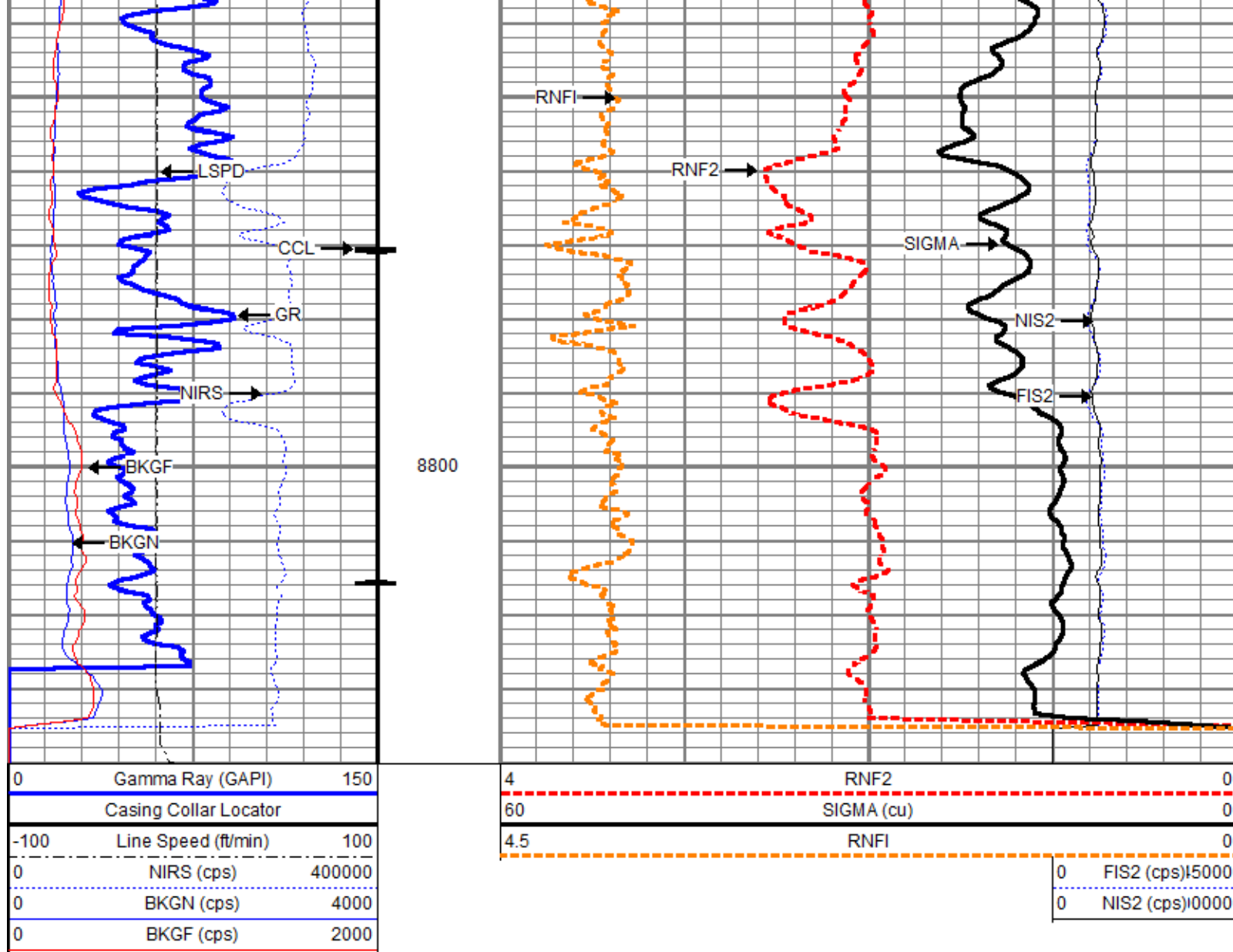






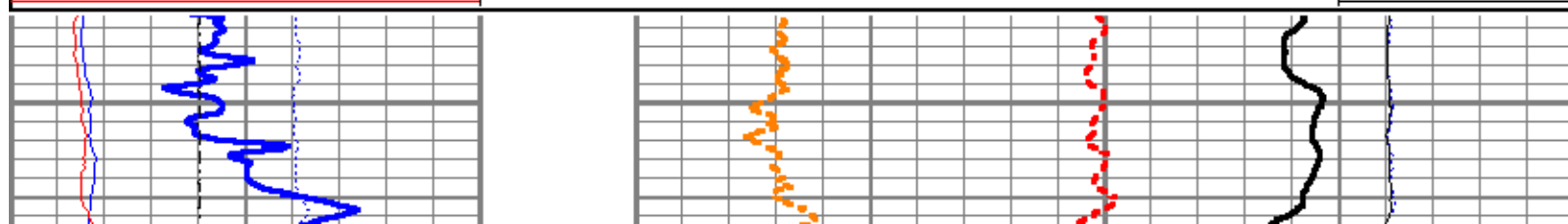
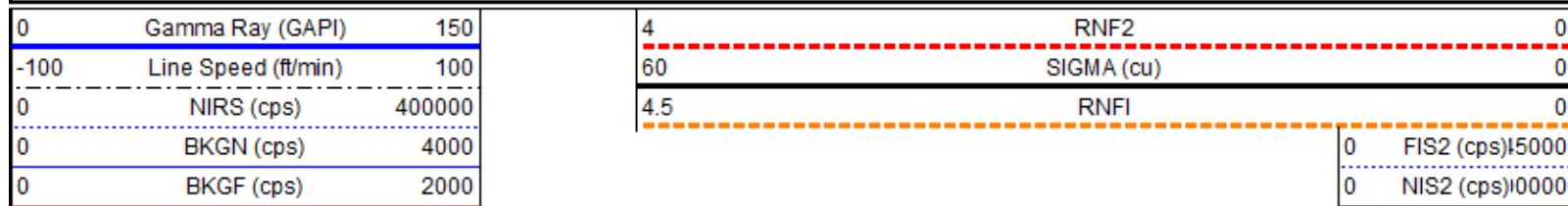


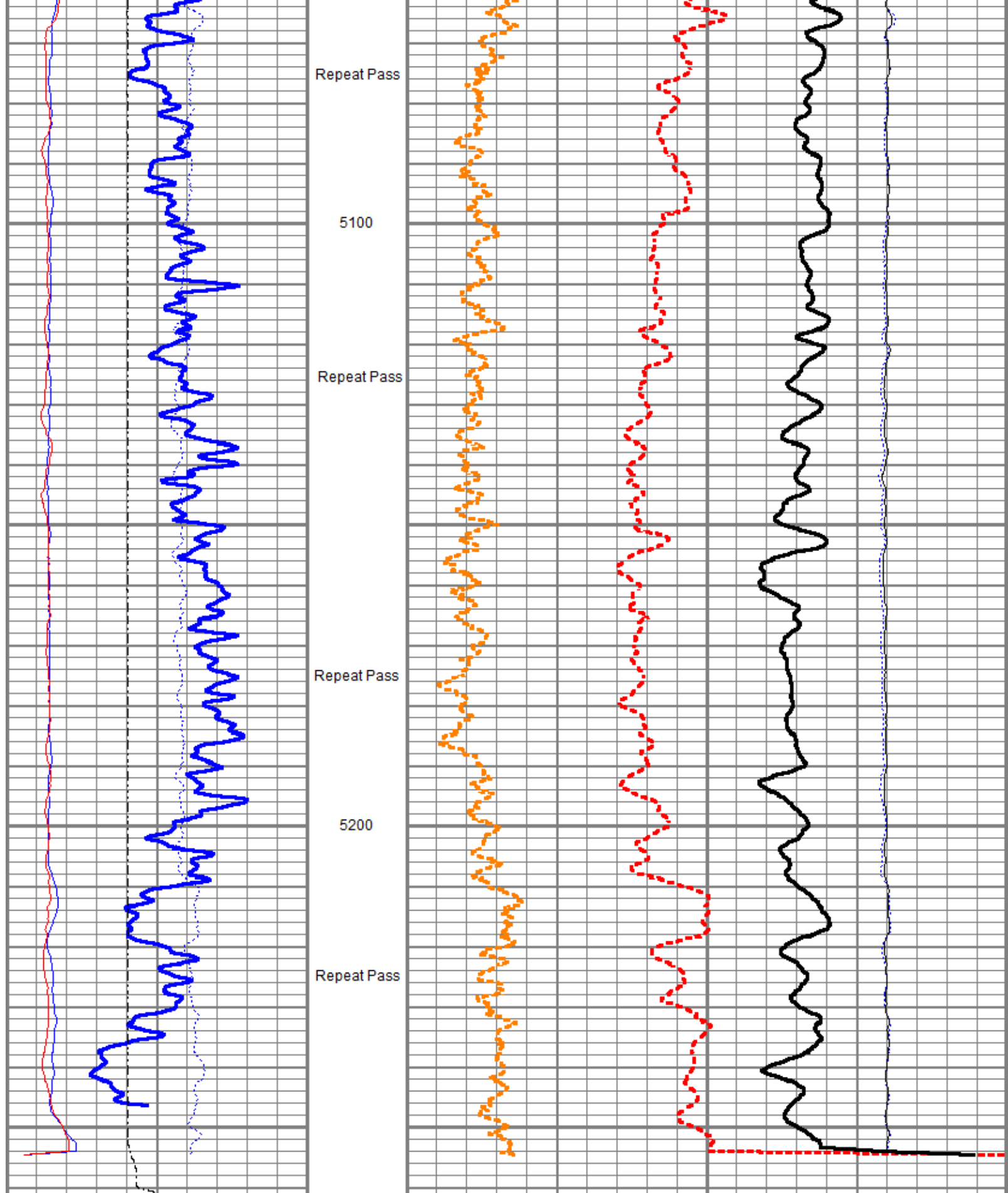




# Repeat Pass

Database File tep\_federal pa 531-26\_rbl\_07-16-18\pn\tep\_federal pa 531-26\_pn\_07-17-18.db  
 Dataset Pathname repeat.2  
 Presentation Format ros\_pdn\_hunter  
 Dataset Creation Tue Jul 17 19:59:13 2018  
 Charted by Depth in Feet scaled 1:240





0	Gamma Ray (GAPI)	150
-100	Line Speed (ft/min)	100
0	NIRS (cps)	400000
0	BKGN (cps)	4000
0	BKGF (cps)	2000

4	RNF2	0
60	SIGMA (cu)	0
4.5	RNF1	0
0	FIS2 (cps)	10000
0	NIS2 (cps)	10000



Total Weight: 66.46 lb  
O.D.: 1.69 in

#### Calibration Report

Database File c:\programdata\warrior\data\tep\_federal pa 531-26\_rbl\_07-16-18\pn\tep\_federal pa 531-26\_pn\_07-17-18.db  
Dataset Pathname main.2  
Dataset Creation Tue Jul 17 20:06:01 2018

#### Gamma Ray Calibration Report

Serial Number: 001681  
Tool Model: 001  
Performed: (Not Performed)

Calibrator Value: 1.0 GAPI

Background Reading: 0.0  
Calibrator Reading: 1.0

Sensitivity: 1.0000 GAPI/



**Company** TEP Rocky Mountain LLC  
**Well** Federal PA 531-26  
**Field** Parachute  
**County** Garfield  
**State** Colorado