

# Inspection Photos

09/05/2018

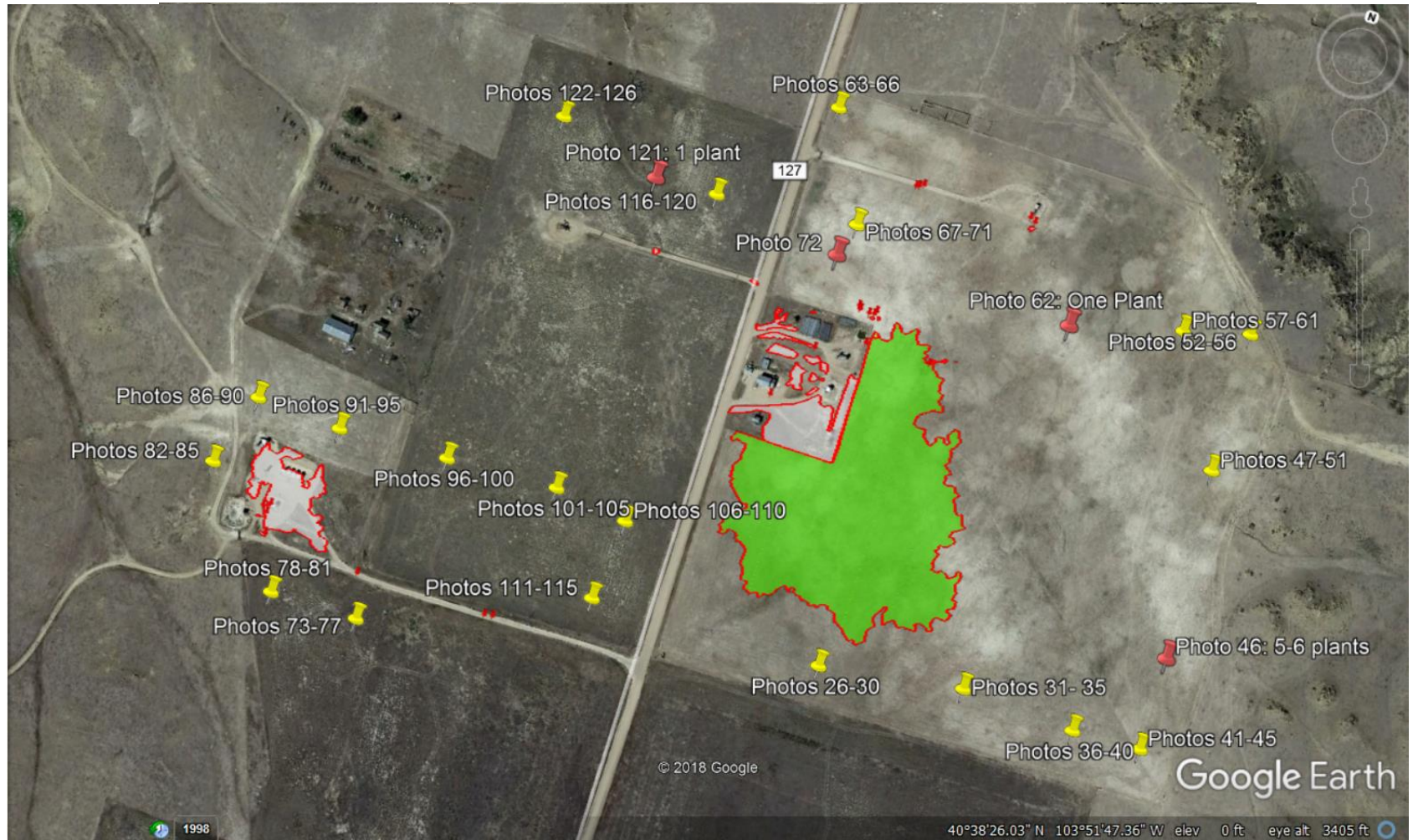
Operator: FOUNDATION ENERGY  
MANAGEMENT LLC - 10112

Location ID: 447523

Inspection Doc. Number: 682503847  
Weld County, CO

Aaron Trujillo  
NE Reclamation Specialist  
COGCC

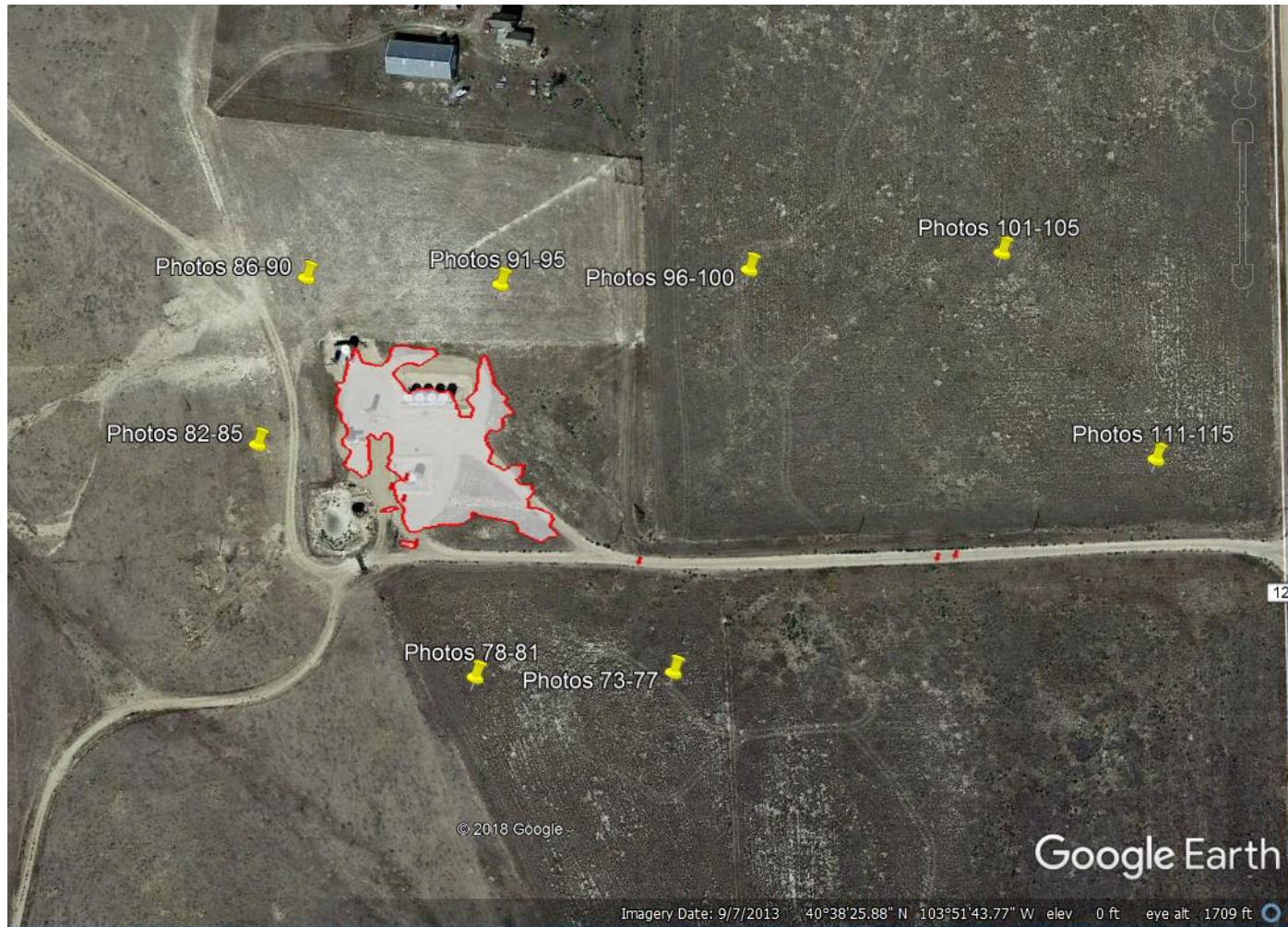
Inspection Photos  
Operator: FOUNDATION ENERGY MANAGEMENT LLC - 10112  
Location ID: 447523



Aerial imagery of photos that have been taken for documentation purposes. Not all photo documents are included within this report. Red polygons (green/white fill) where Noxious weeds were mapped on and off location using a GPS during the 6/15/2018 inspection; White polygon is diffuse knapweed concentration on location, green is the high density knapweed off the location. Point ("thumb-tacs") represent GPS points and the related photos within this documentation. Photo shows adjacent lands do not have the population densities of noxious weeds compared to areas within the locations and its immediate surrounding; noxious weed population densities decrease as the distance away from the locations increase.



Inspection Photos  
Operator: FOUNDATION ENERGY MANAGEMENT LLC - 10112  
Location ID: 447523



2013 aerial imagery. Photo shows overview of photos included in this document.





The photos within this document identify Yellow Sweet clover within the location and reference area, as well as Diffuse Knapweed. For documentation purposes as it may be difficult to distinguish between the two in the photo document, the above picture are to compare and contrast the visible differences between Diffuse Knapweed (Two photos to the left) and Yellow Sweet Clover (Single photo on the right). Photos curtesy of CO Department of Ag, and USDA Plants Database.



Inspection Photos  
Operator: FOUNDATION ENERGY MANAGEMENT LLC - 10112  
Location ID: 447523



**Photo 1:** Photo taken from the southwest end of the location.  
Photo shows Diffuse Knapweed remains on location.



**Photo 2:** Photo taken from the southwest end of the location.  
Photo shows Diffuse Knapweed remains on location.



Inspection Photos  
Operator: FOUNDATION ENERGY MANAGEMENT LLC - 10112  
Location ID: 447523



**Photo 3:** Photo taken from the southwest end of the location, facing northeast. Photo shows Diffuse Knapweed remains on location.



**Photo 4:** Photo taken from the south end of the location. Photo shows Diffuse Knapweed remains on location.



Inspection Photos  
Operator: FOUNDATION ENERGY MANAGEMENT LLC - 10112  
Location ID: 447523



**Photo 5:** Photo taken from the south end of the location. Photo shows Diffuse Knapweed remains on location.



**Photo 6:** Photo taken from the south end of the location, facing east. Photo shows Diffuse Knapweed remains on location.



Inspection Photos  
Operator: FOUNDATION ENERGY MANAGEMENT LLC - 10112  
Location ID: 447523



**Photo 7:** Photo taken from the south end of the location, facing south. Photo shows Diffuse Knapweed remains on location.



**Photo 8:** Photo taken from the south end of the location, facing south. Photo shows Diffuse Knapweed remains on location.



Inspection Photos  
Operator: FOUNDATION ENERGY MANAGEMENT LLC - 10112  
Location ID: 447523



**Photo 9:** Photo taken from the south end of the location, facing west. Photo shows Diffuse Knapweed remains on location.



**Photo 10:** Photo taken from the south end of the location. Photo shows Diffuse Knapweed remains on location.



Inspection Photos  
Operator: FOUNDATION ENERGY MANAGEMENT LLC - 10112  
Location ID: 447523



**Photo 11:** Photo taken from the east end of the location. Photo shows Diffuse Knapweed remains on location.



**Photo 12:** Continued from photo 11



Inspection Photos  
Operator: FOUNDATION ENERGY MANAGEMENT LLC - 10112  
Location ID: 447523



**Photo 13:** Photo taken from the northwest end of the location.  
Photo shows Diffuse Knapweed remains on location



**Photo 14:** Continued from photo 13





**Photo 15:** Photo taken from the northwest end of the location, facing west. Photo shows Diffuse Knapweed remains on location



**Photo 16:** Continued from photo 15



Inspection Photos  
Operator: FOUNDATION ENERGY MANAGEMENT LLC - 10112  
Location ID: 447523



**Photo 17:** Photo taken from the northwest end of the location.  
Photo shows Diffuse Knapweed remains



**Photo 18:** Photo taken from the northwest end of the location,  
facing north. Photo shows Diffuse Knapweed remains



Inspection Photos  
Operator: FOUNDATION ENERGY MANAGEMENT LLC - 10112  
Location ID: 447523



**Photo 19:** Photo taken from the east of the location, facing south. Previous inspection required operator to conduct weed management in these area due to noxious weeds spreading from the location onto the adjacent lands. Hundreds of individual Diffuse Knapweed remain evident and dense in these areas. White flowers observed in the photo Diffuse Knapweed. Unable to find evidence that sufficient weed management has been conducted. Diffuse knapweed evident in all areas of the foreground in this photo



**Photo 20:** See comments under photo 19





**Photo 21:** See comments under photo 19.



**Photo 22:** See comments under photo 19. White flowers observed in the photo Diffuse Knapweed.



Inspection Photos  
Operator: FOUNDATION ENERGY MANAGEMENT LLC - 10112  
Location ID: 447523



**Photo 23:** Photo taken from the east of the location, facing south. See comments under photo 19. White flowers observed in the photo Diffuse Knapweed.



**Photo 24:** Photo taken from the east of the location, facing west. See comments under photo 19. White flowers observed in the photo Diffuse Knapweed.



Inspection Photos  
Operator: FOUNDATION ENERGY MANAGEMENT LLC - 10112  
Location ID: 447523



**Photo 25:** Photo taken from the southeast of the location, facing northwest. See comments under photo 19. White flowers observed in the photo Diffuse Knapweed.



**Photo 26:** Photo taken from the southeast of the location, facing northwest. See comments under photo 19. White flowers observed in the photo Diffuse Knapweed.



Inspection Photos  
Operator: FOUNDATION ENERGY MANAGEMENT LLC - 10112  
Location ID: 447523



**Photo 26:** Photo taken from the adjacent lands, facing north. See photo 127 for additional details. Individual Diffuse Knapweed was observed in this area. Photo shows adjacent lands do not have the population densities of noxious weeds compared to areas within the locations and its immediate surrounding; noxious weed population densities decrease as the distance away from the locations increase.



**Photo 27:** Photo taken from the adjacent lands, facing east. See comments under photo 26



Inspection Photos  
Operator: FOUNDATION ENERGY MANAGEMENT LLC - 10112  
Location ID: 447523



**Photo 28:** Photo taken from the adjacent lands, facing south. See comments under photo 26



**Photo 29:** Photo taken from the adjacent lands, facing west. See comments under photo 26





**Photo 30:** Photo taken from the adjacent lands. Photo shows dominant vegetation observed in this immediate area to be Sand Dropseed, Blue Grama and Yellow Sweet clover (white flower)



Inspection Photos  
Operator: FOUNDATION ENERGY MANAGEMENT LLC - 10112  
Location ID: 447523



**Photo 31:** Photo taken from the adjacent lands, facing north. See photo 127 for additional details. Diffuse Knapweed was not observed in this area. Photo shows adjacent lands do not have the population densities of noxious weeds compared to areas within the locations and its immediate surrounding; noxious weed population densities decrease as the distance away from the locations increase.



**Photo 32:** Photo taken from the adjacent lands, facing east. See comments under photo 31



Inspection Photos  
Operator: FOUNDATION ENERGY MANAGEMENT LLC - 10112  
Location ID: 447523



**Photo 33:** Photo taken from the adjacent lands, facing south. See comments under photo 31



**Photo 34:** Photo taken from the adjacent lands, facing west. See comments under photo 31





**Photo 35:** Photo taken from the adjacent lands. Photo shows dominant vegetation observed in this immediate area to be Sand Dropseed, Blue Grama and Yellow Sweet clover (white flower)



Inspection Photos  
Operator: FOUNDATION ENERGY MANAGEMENT LLC - 10112  
Location ID: 447523



**Photo 36:** Photo taken from the adjacent lands, facing north. See photo 127 for additional details. Diffuse Knapweed was not observed in this area. Photo shows adjacent lands do not have the population densities of noxious weeds compared to areas within the locations and its immediate surrounding; noxious weed population densities decrease as the distance away from the locations increase.



**Photo 37:** Photo taken from the adjacent lands, facing east. See comments under photo 36



Inspection Photos  
Operator: FOUNDATION ENERGY MANAGEMENT LLC - 10112  
Location ID: 447523



**Photo 38:** Photo taken from the adjacent lands, facing south. See comments under photo 36



**Photo 39:** Photo taken from the adjacent lands, facing west. See comments under photo 36.





**Photo 40:** Photo taken from the adjacent lands. Photo shows dominant vegetation observed in this immediate area to be Sand Dropseed, Blue Grama and Yellow Sweet clover (white flower)



Inspection Photos  
Operator: FOUNDATION ENERGY MANAGEMENT LLC - 10112  
Location ID: 447523



**Photo 41:** Photo taken from the adjacent lands, facing north. See photo 127 for additional details. An individual Diffuse Knapweed was observed in this area. Photo shows adjacent lands do not have the population densities of noxious weeds compared to areas within the locations and its immediate surrounding; noxious weed population densities decrease as the distance away from the locations increase.



**Photo 42:** Photo taken from the adjacent lands, facing east. See comments under photo 41



Inspection Photos  
Operator: FOUNDATION ENERGY MANAGEMENT LLC - 10112  
Location ID: 447523



**Photo 43:** Photo taken from the adjacent lands, facing south. See comments under photo 41



**Photo 44:** Photo taken from the adjacent lands, facing west. See comments under photo 41





**Photo 45:** Photo taken from the adjacent lands. Photo shows dominant vegetation observed in this immediate area to be Sand Dropseed, Blue Grama and Yellow Sweet clover (white flower)





**Photo 46:** Photo taken from the adjacent lands to the east of the location. See photo 127. Photo shows Diffuse Knapweed observed in the reference. ~5-6 individuals were observed within this area. Photo shows adjacent lands do not have the population densities of noxious weeds compared to areas within the locations and its immediate surrounding; noxious weed population densities decrease as the distance away from the locations increase.



Inspection Photos  
Operator: FOUNDATION ENERGY MANAGEMENT LLC - 10112  
Location ID: 447523



**Photo 47:** Photo taken from the adjacent lands, facing north. See photo 127 for additional details. Diffuse Knapweed was not observed in this area. Photo shows adjacent lands do not have the population densities of noxious weeds compared to areas within the locations and its immediate surrounding; noxious weed population densities decrease as the distance away from the locations increase.



**Photo 48:** Photo taken from the adjacent lands, facing east. See comments under photo 47



Inspection Photos  
Operator: FOUNDATION ENERGY MANAGEMENT LLC - 10112  
Location ID: 447523



**Photo 49:** Photo taken from the adjacent lands, facing south. See comments under photo 47



**Photo 50:** Photo taken from the adjacent lands, facing west. See comments under photo 47





**Photo 51:** Photo taken from the adjacent lands. Photo shows dominant vegetation observed in this immediate area to be Sand Dropseed, Blue Grama and Yellow Sweet clover (white flower)



Inspection Photos  
Operator: FOUNDATION ENERGY MANAGEMENT LLC - 10112  
Location ID: 447523



**Photo 52:** Photo taken from the adjacent lands, facing north. See photo 127 for additional details. Diffuse Knapweed **was not** observed in this area. Photo shows adjacent lands do not have the population densities of noxious weeds compared to areas within the locations and its immediate surrounding; noxious weed population densities decrease as the distance away from the locations increase.



**Photo 53:** Photo taken from the adjacent lands, facing east. See comments under photo 52



Inspection Photos  
Operator: FOUNDATION ENERGY MANAGEMENT LLC - 10112  
Location ID: 447523



**Photo 54:** Photo taken from the adjacent lands, facing south. See comments under photo 52



**Photo 55:** Photo taken from the adjacent lands, facing west. See comments under photo 52





**Photo 56:** Photo taken from the adjacent lands. Photo shows dominant vegetation observed in this immediate area to be Sand Dropseed.



Inspection Photos  
Operator: FOUNDATION ENERGY MANAGEMENT LLC - 10112  
Location ID: 447523



**Photo 57:** Photo taken from the adjacent lands, facing north. See photo 127 for additional details. Diffuse Knapweed was not observed in this area. Photo shows adjacent lands do not have the population densities of noxious weeds compared to areas within the locations and its immediate surrounding; noxious weed population densities decrease as the distance away from the locations increase.



**Photo 58:** Photo taken from the adjacent lands, facing east. See comments under photo 57



Inspection Photos  
Operator: FOUNDATION ENERGY MANAGEMENT LLC - 10112  
Location ID: 447523



**Photo 59:** Photo taken from the adjacent lands, facing south. See comments under photo 57



**Photo 60:** Photo taken from the adjacent lands, facing west. See comments under photo 57





**Photo 61:** Photo taken from the adjacent lands. Photo shows dominant vegetation observed in this immediate area to be Sand Dropseed, Blue Grama and Yellow Sweet clover (white flower, top left)



Inspection Photos

Operator: FOUNDATION ENERGY MANAGEMENT LLC - 10112

Location ID: 447523



**Photo 62:** Photo taken from the adjacent lands to the northeast of the location. See photo 127. Photo shows Diffuse Knapweed observed in the reference. Only 1 individuals was observed within this area. Photo shows adjacent lands do not have the population densities of noxious weeds compared to areas within the locations and its immediate surrounding; noxious weed population densities decrease as the distance away from the locations increase.



**COLORADO**  
Oil & Gas Conservation  
Commission  
Department of Natural Resources

Inspection Doc. Number: 682503847



Inspection Photos  
Operator: FOUNDATION ENERGY MANAGEMENT LLC - 10112  
Location ID: 447523



**Photo 63:** Photo taken from the adjacent lands, facing north. See photo 127 for additional details. Diffuse Knapweed was not observed in this area. Photo shows adjacent lands do not have the population densities of noxious weeds compared to areas within the locations and its immediate surrounding; noxious weed population densities decrease as the distance away from the locations increase.



**Photo 64:** Photo taken from the adjacent lands, facing east. See comments under photo 63



Inspection Photos  
Operator: FOUNDATION ENERGY MANAGEMENT LLC - 10112  
Location ID: 447523



**Photo 65:** Photo taken from the adjacent lands, facing south. See comments under photo 63



**Photo 66:** Photo taken from the adjacent lands, facing west. See comments under photo 63



Inspection Photos  
Operator: FOUNDATION ENERGY MANAGEMENT LLC - 10112  
Location ID: 447523



**Photo 67:** Photo taken from the adjacent lands, facing north. See photo 127 for additional details. Diffuse Knapweed **was not** observed in this area. Photo shows adjacent lands do not have the population densities of noxious weeds compared to areas within the locations and its immediate surrounding; noxious weed population densities decrease as the distance away from the locations increase.



**Photo 68:** Photo taken from the adjacent lands, facing east. See comments under photo 67



Inspection Photos  
Operator: FOUNDATION ENERGY MANAGEMENT LLC - 10112  
Location ID: 447523



**Photo 69:** Photo taken from the adjacent lands, facing south. See comments under photo 67



**Photo 70:** Photo taken from the adjacent lands, facing west. See comments under photo 67





**Photo 71:** Photo taken from the adjacent lands. Photo shows dominant vegetation observed in this immediate area to be Sand Dropseed, Blue Grama and Yellow Sweet clover (white flower) and Russian Thistle





**Photo 72:** Photo taken from the adjacent lands to the northeast of the location. See photo 127. Photo shows Diffuse Knapweed observed in the reference. Multiple individuals was observed within this area. Photo shows adjacent lands do not have the population densities of noxious weeds compared to areas within the locations and its immediate surrounding; noxious weed population densities decrease as the distance away from the locations increase.