



Crestone Peak Resources

Well Name:

REGNIER FARMS 1E-19H-B268

Project Name:

Sec 19 T2N-R68W

Pad Name:

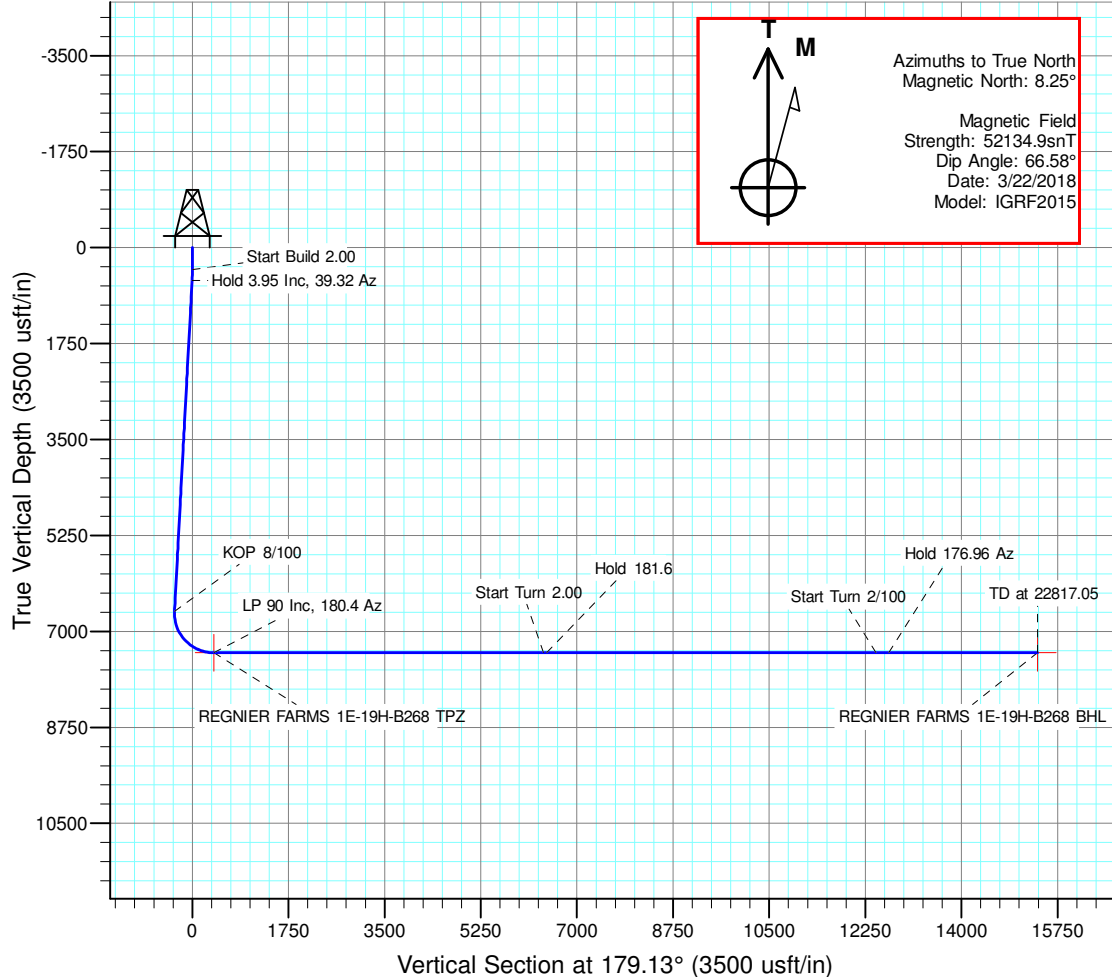
Regnier Farms Pad

ANNOTATIONS

MD	Inc	Azi	TVD	+N/-S	+E/-W	VSect	Departure	Annotation
400.00	0.00	0.00	400.00	0.00	0.00	0.00	0.00	Start Build 2.00
597.55	3.95	39.32	597.39	5.27	4.31	-5.20	6.81	Hold 3.95 Inc, 39.32 Az
6649.66	3.95	39.32	6635.12	327.85	268.57	-323.76	423.81	KOP 8/100
7813.07	90.00	180.40	7389.00	-387.53	296.29	391.96	1145.26	LP 90 Inc, 180.4 Az
13813.07	90.00	180.40	7389.00	-6387.38	254.40	6390.50	7145.26	Start Turn 2.00
13873.07	90.00	181.60	7389.00	-6447.37	253.35	6450.46	7205.26	Hold 181.6
19873.07	90.00	181.60	7389.00	-12445.03	85.82	12444.91	13205.26	Start Turn 2/100
20104.89	90.00	176.96	7389.00	-12676.77	88.73	12676.67	13437.08	Hold 176.96 Az
22817.05	90.00	176.96	7389.00	-15385.13	232.39	15386.88	16148.24	TD at 22817.05

DESIGN TARGET DETAILS

Name	TVD	+N/-S	+E/-W	Northing	Easting	Latitude	Longitude	Shape
REGNIER FARMS 1E-19H-B268 BHL	7389.00	-15385.13	232.39	1275585.823	3128048.795	40.088967	-105.042335	Point
REGNIER FARMS 1E-19H-B268 TPZ	7389.00	-387.53	296.29	1290583.550	3128035.428	40.130138	-105.042105	Point

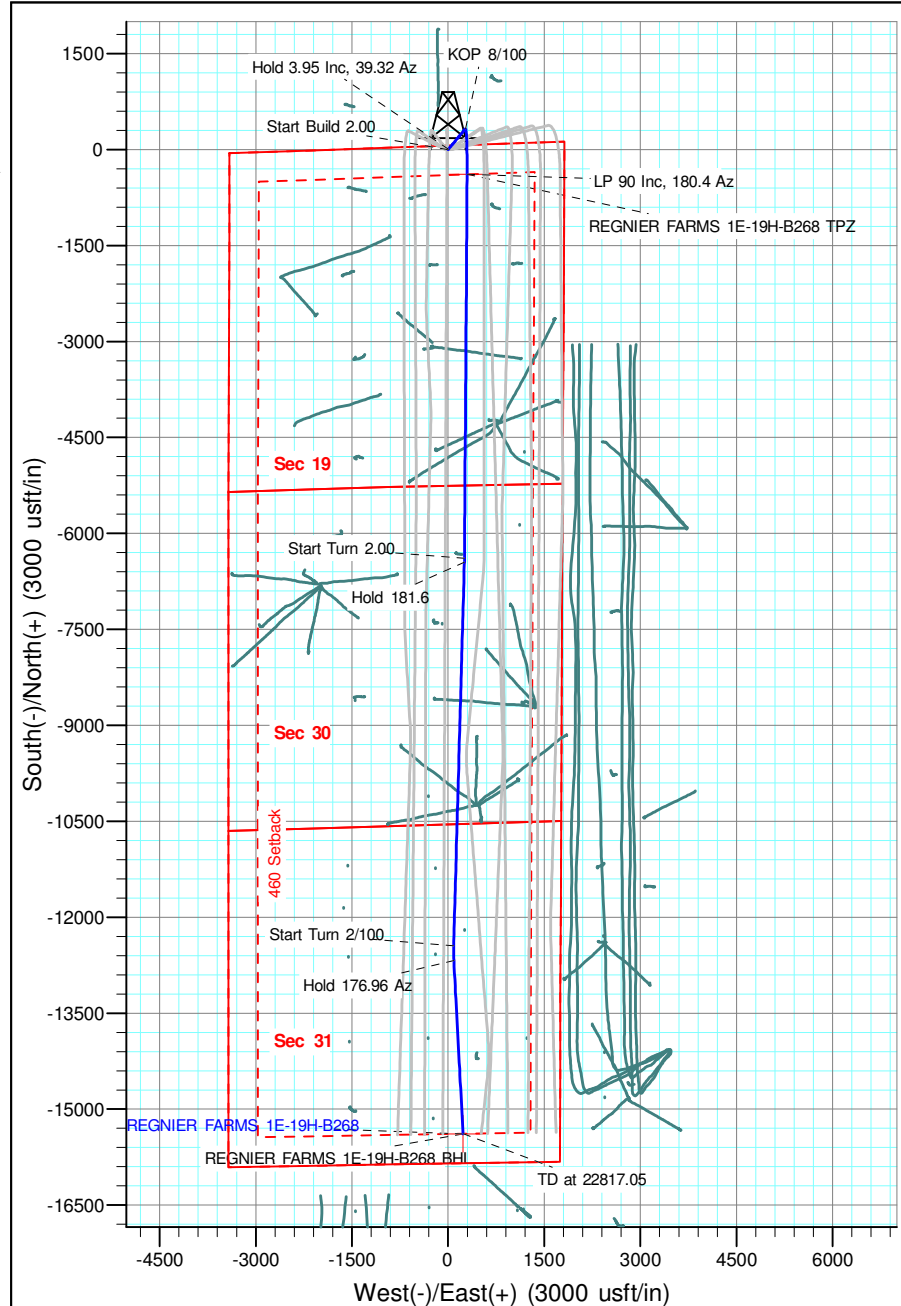


Geodetic Datum:

North American Datum 1983
US State Plane 1983, Colorado Northern Zone

Elevation:

Ground Elevation: 4966.00
KB Elevation: WELL @ 4989.00usft (Original Well Elev)





Crestone Peak Resources

Sec 19 T2N-R68W

Regnier Farms Pad

REGNIER FARMS 1E-19H-B268

Wellbore #1

Plan: Design #1 22Mar18 kjs

Standard Planning Report - Geographic

03 April, 2018

Database:	EDM 5000.14 Single User Db	Local Co-ordinate Reference:	Well REGNIER FARMS 1E-19H-B268
Company:	Crestone Peak Resources	TVD Reference:	WELL @ 4989.00usft (Original Well Elev)
Project:	Sec 19 T2N-R68W	MD Reference:	WELL @ 4989.00usft (Original Well Elev)
Site:	Regnier Farms Pad	North Reference:	True
Well:	REGNIER FARMS 1E-19H-B268	Survey Calculation Method:	Minimum Curvature
Wellbore:	Wellbore #1		
Design:	Design #1 22Mar18 kjs		

Project	Sec 19 T2N-R68W, Weld County, CO		
Map System:	US State Plane 1983	System Datum:	Mean Sea Level
Geo Datum:	North American Datum 1983		
Map Zone:	Colorado Northern Zone		

Site		Regnier Farms Pad			
Site Position:		Northing:	1,290,967.816 usft	Latitude:	40.131198
From:	Map	Easting:	3,127,697.187 usft	Longitude:	-105.043308
Position Uncertainty:	0.00 usft	Slot Radius:	13-3/16 "	Grid Convergence:	0.30

Well	REGNIER FARMS 1E-19H-B268					
Well Position	+N/-S	0.00 usft	Northing:	1,290,969.547 usft	Latitude:	40.131202
	+E/-W	0.00 usft	Easting:	3,127,737.149 usft	Longitude:	-105.043165
Position Uncertainty		0.00 usft	Wellhead Elevation:		Ground Level:	4,966.00 usft

Wellbore	Wellbore #1				
Magnetics	Model Name	Sample Date	Declination (°)	Dip Angle (°)	Field Strength (nT)
	IGRF2015	3/22/2018	8.25	66.58	52,134.85151608

Design	Design #1 22Mar18 kjs			
Audit Notes:				
Version:	Phase:	PLAN	Tie On Depth:	0.00
Vertical Section:	Depth From (TVD) (usft)	+N/-S (usft)	+E/-W (usft)	Direction (°)
	0.00	0.00	0.00	179.13

Plan Survey Tool Program	Date	4/2/2018		
Depth From (usft)	Depth To (usft)	Survey (Wellbore)	Tool Name	Remarks
1	0.00	22,816.21 Design #1 22Mar18 kjs (Wellbore)	MWD OWSG MWD - Standard	

Database:	EDM 5000.14 Single User Db	Local Co-ordinate Reference:	Well REGNIER FARMS 1E-19H-B268
Company:	Crestone Peak Resources	TVD Reference:	WELL @ 4989.00usft (Original Well Elev)
Project:	Sec 19 T2N-R68W	MD Reference:	WELL @ 4989.00usft (Original Well Elev)
Site:	Regnier Farms Pad	North Reference:	True
Well:	REGNIER FARMS 1E-19H-B268	Survey Calculation Method:	Minimum Curvature
Wellbore:	Wellbore #1		
Design:	Design #1 22Mar18 kjs		

Plan Sections										
Measured Depth (usft)	Inclination (°)	Azimuth (°)	Vertical Depth (usft)	+N/-S (usft)	+E/-W (usft)	Dogleg Rate (°/100usft)	Build Rate (°/100usft)	Turn Rate (°/100usft)	TFO (°)	Target
0.00	0.00	0.00	0.00	0.00	0.00	0.00	0.00	0.00	0.00	
400.00	0.00	0.00	400.00	0.00	0.00	0.00	0.00	0.00	0.00	
597.55	3.95	39.32	597.39	5.27	4.31	2.00	2.00	0.00	39.32	
6,649.66	3.95	39.32	6,635.12	327.85	268.57	0.00	0.00	0.00	0.00	
7,813.07	90.00	180.40	7,389.00	-387.53	296.29	8.00	7.40	12.13	141.01	REGNIER FARMS 1E
13,813.07	90.00	180.40	7,389.00	-6,387.38	254.40	0.00	0.00	0.00	0.00	
13,873.07	90.00	181.60	7,389.00	-6,447.37	253.35	2.00	0.00	2.00	90.00	
19,873.07	90.00	181.60	7,389.00	-12,445.03	85.82	0.00	0.00	0.00	0.00	
20,104.89	90.00	176.96	7,389.00	-12,676.77	88.73	2.00	0.00	-2.00	-90.00	
22,817.05	90.00	176.96	7,389.00	-15,385.13	232.39	0.00	0.00	0.00	0.00	REGNIER FARMS 1E

Database:	EDM 5000.14 Single User Db	Local Co-ordinate Reference:	Well REGNIER FARMS 1E-19H-B268
Company:	Crestone Peak Resources	TVD Reference:	WELL @ 4989.00usft (Original Well Elev)
Project:	Sec 19 T2N-R68W	MD Reference:	WELL @ 4989.00usft (Original Well Elev)
Site:	Regnier Farms Pad	North Reference:	True
Well:	REGNIER FARMS 1E-19H-B268	Survey Calculation Method:	Minimum Curvature
Wellbore:	Wellbore #1		
Design:	Design #1 22Mar18 kjs		

Planned Survey									
Measured Depth (usft)	Inclination (°)	Azimuth (°)	Vertical Depth (usft)	+N/-S (usft)	+E/-W (usft)	Map Northing (usft)	Map Easting (usft)	Latitude	Longitude
0.00	0.00	0.00	0.00	0.00	0.00	1,290,969.547	3,127,737.149	40.131202	-105.043165
200.00	0.00	0.00	200.00	0.00	0.00	1,290,969.547	3,127,737.149	40.131202	-105.043165
400.00	0.00	0.00	400.00	0.00	0.00	1,290,969.547	3,127,737.149	40.131202	-105.043165
Start Build 2.00									
597.55	3.95	39.32	597.39	5.27	4.31	1,290,974.836	3,127,741.437	40.131216	-105.043150
Hold 3.95 Inc, 39.32 Az									
600.00	3.95	39.32	599.84	5.40	4.42	1,290,974.967	3,127,741.543	40.131217	-105.043150
800.00	3.95	39.32	799.36	16.06	13.15	1,290,985.672	3,127,750.221	40.131246	-105.043118
1,000.00	3.95	39.32	998.89	26.72	21.89	1,290,996.377	3,127,758.898	40.131275	-105.043087
1,200.00	3.95	39.32	1,198.41	37.38	30.62	1,291,007.082	3,127,767.576	40.131304	-105.043056
1,400.00	3.95	39.32	1,397.94	48.04	39.35	1,291,017.787	3,127,776.253	40.131334	-105.043025
1,600.00	3.95	39.32	1,597.46	58.70	48.08	1,291,028.492	3,127,784.931	40.131363	-105.042993
1,800.00	3.95	39.32	1,796.99	69.36	56.82	1,291,039.197	3,127,793.608	40.131392	-105.042962
2,000.00	3.95	39.32	1,996.51	80.02	65.55	1,291,049.902	3,127,802.286	40.131421	-105.042931
2,200.00	3.95	39.32	2,196.04	90.68	74.28	1,291,060.607	3,127,810.963	40.131451	-105.042900
2,400.00	3.95	39.32	2,395.56	101.34	83.01	1,291,071.312	3,127,819.641	40.131480	-105.042868
2,600.00	3.95	39.32	2,595.08	112.00	91.75	1,291,082.017	3,127,828.319	40.131509	-105.042837
2,800.00	3.95	39.32	2,794.61	122.66	100.48	1,291,092.722	3,127,836.996	40.131538	-105.042806
3,000.00	3.95	39.32	2,994.13	133.32	109.21	1,291,103.427	3,127,845.674	40.131568	-105.042775
3,200.00	3.95	39.32	3,193.66	143.98	117.95	1,291,114.132	3,127,854.351	40.131597	-105.042744
3,400.00	3.95	39.32	3,393.18	154.64	126.68	1,291,124.837	3,127,863.029	40.131626	-105.042712
3,600.00	3.95	39.32	3,592.71	165.30	135.41	1,291,135.542	3,127,871.706	40.131656	-105.042681
3,800.00	3.95	39.32	3,792.23	175.96	144.14	1,291,146.247	3,127,880.384	40.131685	-105.042650
4,000.00	3.95	39.32	3,991.76	186.62	152.88	1,291,156.952	3,127,889.061	40.131714	-105.042619
4,200.00	3.95	39.32	4,191.28	197.28	161.61	1,291,167.657	3,127,897.739	40.131743	-105.042587
4,400.00	3.95	39.32	4,390.81	207.94	170.34	1,291,178.362	3,127,906.416	40.131773	-105.042556
4,600.00	3.95	39.32	4,590.33	218.60	179.07	1,291,189.068	3,127,915.094	40.131802	-105.042525
4,800.00	3.95	39.32	4,789.86	229.26	187.81	1,291,199.773	3,127,923.771	40.131831	-105.042494
5,000.00	3.95	39.32	4,989.38	239.92	196.54	1,291,210.478	3,127,932.449	40.131860	-105.042462
5,200.00	3.95	39.32	5,188.91	250.58	205.27	1,291,221.183	3,127,941.127	40.131890	-105.042431
5,400.00	3.95	39.32	5,388.43	261.24	214.00	1,291,231.888	3,127,949.804	40.131919	-105.042400
5,600.00	3.95	39.32	5,587.96	271.90	222.74	1,291,242.593	3,127,958.482	40.131948	-105.042369
5,800.00	3.95	39.32	5,787.48	282.56	231.47	1,291,253.298	3,127,967.159	40.131977	-105.042338
6,000.00	3.95	39.32	5,987.00	293.22	240.20	1,291,264.003	3,127,975.837	40.132007	-105.042306
6,200.00	3.95	39.32	6,186.53	303.88	248.93	1,291,274.708	3,127,984.514	40.132036	-105.042275
6,400.00	3.95	39.32	6,386.05	314.54	257.67	1,291,285.413	3,127,993.192	40.132065	-105.042244
6,600.00	3.95	39.32	6,585.58	325.20	266.40	1,291,296.118	3,128,001.869	40.132094	-105.042213
6,649.66	3.95	39.32	6,635.12	327.85	268.57	1,291,298.776	3,128,004.024	40.132102	-105.042205
KOP 8/100									
6,800.00	9.29	165.02	6,784.85	320.11	275.01	1,291,291.065	3,128,010.507	40.132080	-105.042182
7,000.00	25.07	175.08	6,975.35	261.92	282.87	1,291,232.917	3,128,018.667	40.131921	-105.042154
7,200.00	41.02	177.54	7,142.47	153.43	289.37	1,291,124.463	3,128,025.720	40.131623	-105.042130
7,400.00	56.99	178.78	7,273.25	3.04	293.99	1,290,974.105	3,128,031.120	40.131210	-105.042114
7,600.00	72.97	179.64	7,357.57	-177.58	296.39	1,290,793.493	3,128,034.449	40.130714	-105.042105
7,800.00	88.96	180.35	7,388.88	-374.46	296.37	1,290,596.619	3,128,035.447	40.130174	-105.042105
7,813.07	90.00	180.40	7,389.00	-387.53	296.29	1,290,583.550	3,128,035.428	40.130138	-105.042106
LP 90 Inc, 180.4 Az									
8,000.00	90.00	180.40	7,389.00	-574.45	294.98	1,290,396.620	3,128,035.086	40.129625	-105.042110
8,200.00	90.00	180.40	7,389.00	-774.45	293.59	1,290,196.621	3,128,034.721	40.129076	-105.042115
8,400.00	90.00	180.40	7,389.00	-974.44	292.19	1,289,996.621	3,128,034.355	40.128527	-105.042120
8,600.00	90.00	180.40	7,389.00	-1,174.44	290.79	1,289,796.621	3,128,033.989	40.127978	-105.042125
8,800.00	90.00	180.40	7,389.00	-1,374.43	289.40	1,289,596.622	3,128,033.623	40.127429	-105.042130
9,000.00	90.00	180.40	7,389.00	-1,574.43	288.00	1,289,396.622	3,128,033.257	40.126880	-105.042135
9,200.00	90.00	180.40	7,389.00	-1,774.42	286.60	1,289,196.622	3,128,032.891	40.126331	-105.042140

Database:	EDM 5000.14 Single User Db	Local Co-ordinate Reference:	Well REGNIER FARMS 1E-19H-B268
Company:	Crestone Peak Resources	TVD Reference:	WELL @ 4989.00usft (Original Well Elev)
Project:	Sec 19 T2N-R68W	MD Reference:	WELL @ 4989.00usft (Original Well Elev)
Site:	Regnier Farms Pad	North Reference:	True
Well:	REGNIER FARMS 1E-19H-B268	Survey Calculation Method:	Minimum Curvature
Wellbore:	Wellbore #1		
Design:	Design #1 22Mar18 kjs		

Planned Survey									
Measured Depth (usft)	Inclination (°)	Azimuth (°)	Vertical Depth (usft)	+N/-S (usft)	+E/-W (usft)	Map Northing (usft)	Map Easting (usft)	Latitude	Longitude
9,400.00	90.00	180.40	7,389.00	-1,974.42	285.21	1,288,996.623	3,128,032.525	40.125782	-105.042145
9,600.00	90.00	180.40	7,389.00	-2,174.41	283.81	1,288,796.623	3,128,032.159	40.125233	-105.042150
9,800.00	90.00	180.40	7,389.00	-2,374.41	282.42	1,288,596.623	3,128,031.793	40.124684	-105.042155
10,000.00	90.00	180.40	7,389.00	-2,574.41	281.02	1,288,396.624	3,128,031.427	40.124135	-105.042160
10,200.00	90.00	180.40	7,389.00	-2,774.40	279.62	1,288,196.624	3,128,031.061	40.123586	-105.042165
10,400.00	90.00	180.40	7,389.00	-2,974.40	278.23	1,287,996.624	3,128,030.696	40.123037	-105.042170
10,600.00	90.00	180.40	7,389.00	-3,174.39	276.83	1,287,796.625	3,128,030.330	40.122488	-105.042175
10,800.00	90.00	180.40	7,389.00	-3,374.39	275.43	1,287,596.625	3,128,029.964	40.121939	-105.042180
11,000.00	90.00	180.40	7,389.00	-3,574.38	274.04	1,287,396.625	3,128,029.598	40.121390	-105.042185
11,200.00	90.00	180.40	7,389.00	-3,774.38	272.64	1,287,196.626	3,128,029.232	40.120841	-105.042190
11,400.00	90.00	180.40	7,389.00	-3,974.37	271.25	1,286,996.626	3,128,028.866	40.120291	-105.042195
11,600.00	90.00	180.40	7,389.00	-4,174.37	269.85	1,286,796.626	3,128,028.500	40.119742	-105.042200
11,800.00	90.00	180.40	7,389.00	-4,374.36	268.45	1,286,596.627	3,128,028.134	40.119193	-105.042205
12,000.00	90.00	180.40	7,389.00	-4,574.36	267.06	1,286,396.627	3,128,027.768	40.118644	-105.042210
12,200.00	90.00	180.40	7,389.00	-4,774.35	265.66	1,286,196.627	3,128,027.402	40.118095	-105.042215
12,400.00	90.00	180.40	7,389.00	-4,974.35	264.26	1,285,996.628	3,128,027.037	40.117546	-105.042220
12,600.00	90.00	180.40	7,389.00	-5,174.34	262.87	1,285,796.628	3,128,026.671	40.116997	-105.042225
12,800.00	90.00	180.40	7,389.00	-5,374.34	261.47	1,285,596.629	3,128,026.305	40.116448	-105.042230
13,000.00	90.00	180.40	7,389.00	-5,574.33	260.08	1,285,396.629	3,128,025.939	40.115899	-105.042235
13,200.00	90.00	180.40	7,389.00	-5,774.33	258.68	1,285,196.629	3,128,025.573	40.115350	-105.042240
13,400.00	90.00	180.40	7,389.00	-5,974.32	257.28	1,284,996.630	3,128,025.207	40.114801	-105.042245
13,600.00	90.00	180.40	7,389.00	-6,174.32	255.89	1,284,796.630	3,128,024.841	40.114252	-105.042250
13,800.00	90.00	180.40	7,389.00	-6,374.31	254.49	1,284,596.630	3,128,024.475	40.113703	-105.042255
13,813.07	90.00	180.40	7,389.00	-6,387.38	254.40	1,284,583.560	3,128,024.451	40.113667	-105.042256
Start Turn 2.00									
13,873.07	90.00	181.60	7,389.00	-6,447.37	253.35	1,284,523.566	3,128,023.713	40.113503	-105.042260
Hold 181.6									
14,000.00	90.00	181.60	7,389.00	-6,574.25	249.81	1,284,396.669	3,128,020.823	40.113154	-105.042272
14,200.00	90.00	181.60	7,389.00	-6,774.17	244.22	1,284,196.721	3,128,016.269	40.112606	-105.042292
14,400.00	90.00	181.60	7,389.00	-6,974.10	238.64	1,283,996.773	3,128,011.714	40.112057	-105.042312
14,600.00	90.00	181.60	7,389.00	-7,174.02	233.05	1,283,796.824	3,128,007.160	40.111508	-105.042332
14,800.00	90.00	181.60	7,389.00	-7,373.94	227.47	1,283,596.876	3,128,002.606	40.110959	-105.042352
15,000.00	90.00	181.60	7,389.00	-7,573.86	221.89	1,283,396.928	3,127,998.051	40.110410	-105.042372
15,200.00	90.00	181.60	7,389.00	-7,773.78	216.30	1,283,196.980	3,127,993.497	40.109862	-105.042392
15,400.00	90.00	181.60	7,389.00	-7,973.71	210.72	1,282,997.032	3,127,988.943	40.109313	-105.042412
15,600.00	90.00	181.60	7,389.00	-8,173.63	205.13	1,282,797.084	3,127,984.388	40.108764	-105.042432
15,800.00	90.00	181.60	7,389.00	-8,373.55	199.55	1,282,597.136	3,127,979.834	40.108215	-105.042452
16,000.00	90.00	181.60	7,389.00	-8,573.47	193.96	1,282,397.188	3,127,975.280	40.107666	-105.042472
16,200.00	90.00	181.60	7,389.00	-8,773.39	188.38	1,282,197.239	3,127,970.726	40.107117	-105.042492
16,400.00	90.00	181.60	7,389.00	-8,973.32	182.80	1,281,997.291	3,127,966.171	40.106569	-105.042512
16,600.00	90.00	181.60	7,389.00	-9,173.24	177.21	1,281,797.343	3,127,961.617	40.106020	-105.042532
16,800.00	90.00	181.60	7,389.00	-9,373.16	171.63	1,281,597.395	3,127,957.063	40.105471	-105.042552
17,000.00	90.00	181.60	7,389.00	-9,573.08	166.04	1,281,397.447	3,127,952.508	40.104922	-105.042572
17,200.00	90.00	181.60	7,389.00	-9,773.00	160.46	1,281,197.499	3,127,947.954	40.104373	-105.042592
17,400.00	90.00	181.60	7,389.00	-9,972.93	154.87	1,280,997.551	3,127,943.400	40.103825	-105.042612
17,600.00	90.00	181.60	7,389.00	-10,172.85	149.29	1,280,797.602	3,127,938.845	40.103276	-105.042632
17,800.00	90.00	181.60	7,389.00	-10,372.77	143.71	1,280,597.654	3,127,934.291	40.102727	-105.042652
18,000.00	90.00	181.60	7,389.00	-10,572.69	138.12	1,280,397.706	3,127,929.737	40.102178	-105.042672
18,200.00	90.00	181.60	7,389.00	-10,772.62	132.54	1,280,197.758	3,127,925.183	40.101629	-105.042692
18,400.00	90.00	181.60	7,389.00	-10,972.54	126.95	1,279,997.810	3,127,920.628	40.101080	-105.042712
18,600.00	90.00	181.60	7,389.00	-11,172.46	121.37	1,279,797.862	3,127,916.074	40.100532	-105.042732
18,800.00	90.00	181.60	7,389.00	-11,372.38	115.78	1,279,597.914	3,127,911.520	40.099983	-105.042751
19,000.00	90.00	181.60	7,389.00	-11,572.30	110.20	1,279,397.966	3,127,906.965	40.099434	-105.042771
19,200.00	90.00	181.60	7,389.00	-11,772.23	104.62	1,279,198.017	3,127,902.411	40.098885	-105.042791

Database:	EDM 5000.14 Single User Db	Local Co-ordinate Reference:	Well REGNIER FARMS 1E-19H-B268
Company:	Crestone Peak Resources	TVD Reference:	WELL @ 4989.00usft (Original Well Elev)
Project:	Sec 19 T2N-R68W	MD Reference:	WELL @ 4989.00usft (Original Well Elev)
Site:	Regnier Farms Pad	North Reference:	True
Well:	REGNIER FARMS 1E-19H-B268	Survey Calculation Method:	Minimum Curvature
Wellbore:	Wellbore #1		
Design:	Design #1 22Mar18 kjs		

Planned Survey									
Measured Depth (usft)	Inclination (°)	Azimuth (°)	Vertical Depth (usft)	+N/-S (usft)	+E/-W (usft)	Map Northing (usft)	Map Easting (usft)	Latitude	Longitude
19,400.00	90.00	181.60	7,389.00	-11,972.15	99.03	1,278,998.069	3,127,897.857	40.098336	-105.042811
19,600.00	90.00	181.60	7,389.00	-12,172.07	93.45	1,278,798.121	3,127,893.302	40.097788	-105.042831
19,800.00	90.00	181.60	7,389.00	-12,371.99	87.86	1,278,598.173	3,127,888.748	40.097239	-105.042851
19,873.07	90.00	181.60	7,389.00	-12,445.03	85.82	1,278,525.122	3,127,887.084	40.097038	-105.042859
Start Turn 2/100									
20,000.00	90.00	179.06	7,389.00	-12,571.95	85.09	1,278,398.202	3,127,887.006	40.096690	-105.042861
20,104.89	90.00	176.96	7,389.00	-12,676.77	88.73	1,278,293.402	3,127,891.183	40.096402	-105.042848
Hold 176.96 Az									
20,200.00	90.00	176.96	7,389.00	-12,771.75	93.76	1,278,198.452	3,127,896.710	40.096141	-105.042830
20,400.00	90.00	176.96	7,389.00	-12,971.47	104.36	1,277,998.790	3,127,908.333	40.095593	-105.042792
20,600.00	90.00	176.96	7,389.00	-13,171.19	114.95	1,277,799.128	3,127,919.955	40.095045	-105.042754
20,800.00	90.00	176.96	7,389.00	-13,370.91	125.55	1,277,599.466	3,127,931.578	40.094497	-105.042717
21,000.00	90.00	176.96	7,389.00	-13,570.62	136.14	1,277,399.804	3,127,943.201	40.093948	-105.042679
21,200.00	90.00	176.96	7,389.00	-13,770.34	146.73	1,277,200.142	3,127,954.823	40.093400	-105.042641
21,400.00	90.00	176.96	7,389.00	-13,970.06	157.33	1,277,000.480	3,127,966.446	40.092852	-105.042603
21,600.00	90.00	176.96	7,389.00	-14,169.78	167.92	1,276,800.818	3,127,978.069	40.092304	-105.042565
21,800.00	90.00	176.96	7,389.00	-14,369.50	178.52	1,276,601.156	3,127,989.691	40.091755	-105.042527
22,000.00	90.00	176.96	7,389.00	-14,569.22	189.11	1,276,401.494	3,128,001.314	40.091207	-105.042489
22,200.00	90.00	176.96	7,389.00	-14,768.94	199.70	1,276,201.832	3,128,012.937	40.090659	-105.042452
22,400.00	90.00	176.96	7,389.00	-14,968.66	210.30	1,276,002.170	3,128,024.559	40.090110	-105.042414
22,600.00	90.00	176.96	7,389.00	-15,168.38	220.89	1,275,802.508	3,128,036.182	40.089562	-105.042376
22,800.00	90.00	176.96	7,389.00	-15,368.10	231.49	1,275,602.846	3,128,047.804	40.089014	-105.042338
22,817.05	90.00	176.96	7,389.00	-15,385.12	232.39	1,275,585.825	3,128,048.795	40.088967	-105.042335
TD at 22817.05									

Design Targets									
Target Name	Dip Angle (°)	Dip Dir. (°)	TVD (usft)	+N/-S (usft)	+E/-W (usft)	Northing (usft)	Easting (usft)	Latitude	Longitude
- hit/miss target									
- Shape									
REGNIER FARMS 1E-1'	0.00	0.00	7,389.00	-15,385.13	232.39	1,275,585.823	3,128,048.795	40.088967	-105.042335
- plan hits target center									
- Point									
REGNIER FARMS 1E-1'	0.00	0.00	7,389.00	-387.53	296.29	1,290,583.550	3,128,035.428	40.130138	-105.042106
- plan hits target center									
- Point									

Plan Annotations					
Measured Depth (usft)	Vertical Depth (usft)	Local Coordinates			
		+N/-S (usft)	+E/-W (usft)	Comment	
400.00	400.00	0.00	0.00	Start Build 2.00	
597.55	597.39	5.27	4.31	Hold 3.95 Inc, 39.32 Az	
6,649.66	6,635.12	327.85	268.57	KOP 8/100	
7,813.07	7,389.00	-387.53	296.29	LP 90 Inc, 180.4 Az	
13,813.07	7,389.00	-6,387.38	254.40	Start Turn 2.00	
13,873.07	7,389.00	-6,447.37	253.35	Hold 181.6	
19,873.07	7,389.00	-12,445.03	85.82	Start Turn 2/100	
20,104.89	7,389.00	-12,676.77	88.73	Hold 176.96 Az	
22,817.05	7,389.00	-15,385.12	232.39	TD at 22817.05	



Crestone Peak Resources

Sec 19 T2N-R68W

Regnier Farms Pad

REGNIER FARMS 1E-19H-B268

Wellbore #1

Plan: Design #1 22Mar18 kjs

Standard Planning Report - Geographic

03 April, 2018

Database:	EDM 5000.14 Single User Db	Local Co-ordinate Reference:	Well REGNIER FARMS 1E-19H-B268
Company:	Crestone Peak Resources	TVD Reference:	WELL @ 4989.00usft (Original Well Elev)
Project:	Sec 19 T2N-R68W	MD Reference:	WELL @ 4989.00usft (Original Well Elev)
Site:	Regnier Farms Pad	North Reference:	True
Well:	REGNIER FARMS 1E-19H-B268	Survey Calculation Method:	Minimum Curvature
Wellbore:	Wellbore #1		
Design:	Design #1 22Mar18 kjs		

Project	Sec 19 T2N-R68W, Weld County, CO		
Map System:	US State Plane 1983	System Datum:	Mean Sea Level
Geo Datum:	North American Datum 1983		
Map Zone:	Colorado Northern Zone		

Site		Regnier Farms Pad			
Site Position:		Northing:	1,290,967.816 usft	Latitude:	40.131198
From:	Map	Easting:	3,127,697.187 usft	Longitude:	-105.043308
Position Uncertainty:	0.00 usft	Slot Radius:	13-3/16 "	Grid Convergence:	0.30

Well	REGNIER FARMS 1E-19H-B268					
Well Position	+N/-S	0.00 usft	Northing:	1,290,969.547 usft	Latitude:	40.131202
	+E/-W	0.00 usft	Easting:	3,127,737.149 usft	Longitude:	-105.043165
Position Uncertainty		0.00 usft	Wellhead Elevation:		Ground Level:	4,966.00 usft

Wellbore	Wellbore #1				
Magnetics	Model Name	Sample Date	Declination (°)	Dip Angle (°)	Field Strength (nT)
	IGRF2015	3/22/2018	8.25	66.58	52,134.85151608

Design	Design #1 22Mar18 kjs			
Audit Notes:				
Version:	Phase:	PLAN	Tie On Depth:	0.00
Vertical Section:	Depth From (TVD) (usft)	+N/-S (usft)	+E/-W (usft)	Direction (°)
	0.00	0.00	0.00	179.13

Plan Survey Tool Program	Date	4/2/2018		
Depth From (usft)	Depth To (usft)	Survey (Wellbore)	Tool Name	Remarks
1	0.00	22,816.21 Design #1 22Mar18 kjs (Wellbore)	MWD OWSG MWD - Standard	

Database:	EDM 5000.14 Single User Db	Local Co-ordinate Reference:	Well REGNIER FARMS 1E-19H-B268
Company:	Crestone Peak Resources	TVD Reference:	WELL @ 4989.00usft (Original Well Elev)
Project:	Sec 19 T2N-R68W	MD Reference:	WELL @ 4989.00usft (Original Well Elev)
Site:	Regnier Farms Pad	North Reference:	True
Well:	REGNIER FARMS 1E-19H-B268	Survey Calculation Method:	Minimum Curvature
Wellbore:	Wellbore #1		
Design:	Design #1 22Mar18 kjs		

Plan Sections										
Measured Depth (usft)	Inclination (°)	Azimuth (°)	Vertical Depth (usft)	+N/-S (usft)	+E/-W (usft)	Dogleg Rate (°/100usft)	Build Rate (°/100usft)	Turn Rate (°/100usft)	TFO (°)	Target
0.00	0.00	0.00	0.00	0.00	0.00	0.00	0.00	0.00	0.00	
400.00	0.00	0.00	400.00	0.00	0.00	0.00	0.00	0.00	0.00	
597.55	3.95	39.32	597.39	5.27	4.31	2.00	2.00	0.00	39.32	
6,649.66	3.95	39.32	6,635.12	327.85	268.57	0.00	0.00	0.00	0.00	
7,813.07	90.00	180.40	7,389.00	-387.53	296.29	8.00	7.40	12.13	141.01	REGNIER FARMS 1E
13,813.07	90.00	180.40	7,389.00	-6,387.38	254.40	0.00	0.00	0.00	0.00	
13,873.07	90.00	181.60	7,389.00	-6,447.37	253.35	2.00	0.00	2.00	90.00	
19,873.07	90.00	181.60	7,389.00	-12,445.03	85.82	0.00	0.00	0.00	0.00	
20,104.89	90.00	176.96	7,389.00	-12,676.77	88.73	2.00	0.00	-2.00	-90.00	
22,817.05	90.00	176.96	7,389.00	-15,385.13	232.39	0.00	0.00	0.00	0.00	REGNIER FARMS 1E

Database:	EDM 5000.14 Single User Db	Local Co-ordinate Reference:	Well REGNIER FARMS 1E-19H-B268
Company:	Crestone Peak Resources	TVD Reference:	WELL @ 4989.00usft (Original Well Elev)
Project:	Sec 19 T2N-R68W	MD Reference:	WELL @ 4989.00usft (Original Well Elev)
Site:	Regnier Farms Pad	North Reference:	True
Well:	REGNIER FARMS 1E-19H-B268	Survey Calculation Method:	Minimum Curvature
Wellbore:	Wellbore #1		
Design:	Design #1 22Mar18 kjs		

Planned Survey									
Measured Depth (usft)	Inclination (°)	Azimuth (°)	Vertical Depth (usft)	+N/-S (usft)	+E/-W (usft)	Map Northing (usft)	Map Easting (usft)	Latitude	Longitude
0.00	0.00	0.00	0.00	0.00	0.00	1,290,969.547	3,127,737.149	40.131202	-105.043165
200.00	0.00	0.00	200.00	0.00	0.00	1,290,969.547	3,127,737.149	40.131202	-105.043165
400.00	0.00	0.00	400.00	0.00	0.00	1,290,969.547	3,127,737.149	40.131202	-105.043165
Start Build 2.00									
597.55	3.95	39.32	597.39	5.27	4.31	1,290,974.836	3,127,741.437	40.131216	-105.043150
Hold 3.95 Inc, 39.32 Az									
600.00	3.95	39.32	599.84	5.40	4.42	1,290,974.967	3,127,741.543	40.131217	-105.043150
800.00	3.95	39.32	799.36	16.06	13.15	1,290,985.672	3,127,750.221	40.131246	-105.043118
1,000.00	3.95	39.32	998.89	26.72	21.89	1,290,996.377	3,127,758.898	40.131275	-105.043087
1,200.00	3.95	39.32	1,198.41	37.38	30.62	1,291,007.082	3,127,767.576	40.131304	-105.043056
1,400.00	3.95	39.32	1,397.94	48.04	39.35	1,291,017.787	3,127,776.253	40.131334	-105.043025
1,600.00	3.95	39.32	1,597.46	58.70	48.08	1,291,028.492	3,127,784.931	40.131363	-105.042993
1,800.00	3.95	39.32	1,796.99	69.36	56.82	1,291,039.197	3,127,793.608	40.131392	-105.042962
2,000.00	3.95	39.32	1,996.51	80.02	65.55	1,291,049.902	3,127,802.286	40.131421	-105.042931
2,200.00	3.95	39.32	2,196.04	90.68	74.28	1,291,060.607	3,127,810.963	40.131451	-105.042900
2,400.00	3.95	39.32	2,395.56	101.34	83.01	1,291,071.312	3,127,819.641	40.131480	-105.042868
2,600.00	3.95	39.32	2,595.08	112.00	91.75	1,291,082.017	3,127,828.319	40.131509	-105.042837
2,800.00	3.95	39.32	2,794.61	122.66	100.48	1,291,092.722	3,127,836.996	40.131538	-105.042806
3,000.00	3.95	39.32	2,994.13	133.32	109.21	1,291,103.427	3,127,845.674	40.131568	-105.042775
3,200.00	3.95	39.32	3,193.66	143.98	117.95	1,291,114.132	3,127,854.351	40.131597	-105.042744
3,400.00	3.95	39.32	3,393.18	154.64	126.68	1,291,124.837	3,127,863.029	40.131626	-105.042712
3,600.00	3.95	39.32	3,592.71	165.30	135.41	1,291,135.542	3,127,871.706	40.131656	-105.042681
3,800.00	3.95	39.32	3,792.23	175.96	144.14	1,291,146.247	3,127,880.384	40.131685	-105.042650
4,000.00	3.95	39.32	3,991.76	186.62	152.88	1,291,156.952	3,127,889.061	40.131714	-105.042619
4,200.00	3.95	39.32	4,191.28	197.28	161.61	1,291,167.657	3,127,897.739	40.131743	-105.042587
4,400.00	3.95	39.32	4,390.81	207.94	170.34	1,291,178.362	3,127,906.416	40.131773	-105.042556
4,600.00	3.95	39.32	4,590.33	218.60	179.07	1,291,189.068	3,127,915.094	40.131802	-105.042525
4,800.00	3.95	39.32	4,789.86	229.26	187.81	1,291,199.773	3,127,923.771	40.131831	-105.042494
5,000.00	3.95	39.32	4,989.38	239.92	196.54	1,291,210.478	3,127,932.449	40.131860	-105.042462
5,200.00	3.95	39.32	5,188.91	250.58	205.27	1,291,221.183	3,127,941.127	40.131890	-105.042431
5,400.00	3.95	39.32	5,388.43	261.24	214.00	1,291,231.888	3,127,949.804	40.131919	-105.042400
5,600.00	3.95	39.32	5,587.96	271.90	222.74	1,291,242.593	3,127,958.482	40.131948	-105.042369
5,800.00	3.95	39.32	5,787.48	282.56	231.47	1,291,253.298	3,127,967.159	40.131977	-105.042338
6,000.00	3.95	39.32	5,987.00	293.22	240.20	1,291,264.003	3,127,975.837	40.132007	-105.042306
6,200.00	3.95	39.32	6,186.53	303.88	248.93	1,291,274.708	3,127,984.514	40.132036	-105.042275
6,400.00	3.95	39.32	6,386.05	314.54	257.67	1,291,285.413	3,127,993.192	40.132065	-105.042244
6,600.00	3.95	39.32	6,585.58	325.20	266.40	1,291,296.118	3,128,001.869	40.132094	-105.042213
6,649.66	3.95	39.32	6,635.12	327.85	268.57	1,291,298.776	3,128,004.024	40.132102	-105.042205
KOP 8/100									
6,800.00	9.29	165.02	6,784.85	320.11	275.01	1,291,291.065	3,128,010.507	40.132080	-105.042182
7,000.00	25.07	175.08	6,975.35	261.92	282.87	1,291,232.917	3,128,018.667	40.131921	-105.042154
7,200.00	41.02	177.54	7,142.47	153.43	289.37	1,291,124.463	3,128,025.720	40.131623	-105.042130
7,400.00	56.99	178.78	7,273.25	3.04	293.99	1,290,974.105	3,128,031.120	40.131210	-105.042114
7,600.00	72.97	179.64	7,357.57	-177.58	296.39	1,290,793.493	3,128,034.449	40.130714	-105.042105
7,800.00	88.96	180.35	7,388.88	-374.46	296.37	1,290,596.619	3,128,035.447	40.130174	-105.042105
7,813.07	90.00	180.40	7,389.00	-387.53	296.29	1,290,583.550	3,128,035.428	40.130138	-105.042106
LP 90 Inc, 180.4 Az									
8,000.00	90.00	180.40	7,389.00	-574.45	294.98	1,290,396.620	3,128,035.086	40.129625	-105.042110
8,200.00	90.00	180.40	7,389.00	-774.45	293.59	1,290,196.621	3,128,034.721	40.129076	-105.042115
8,400.00	90.00	180.40	7,389.00	-974.44	292.19	1,289,996.621	3,128,034.355	40.128527	-105.042120
8,600.00	90.00	180.40	7,389.00	-1,174.44	290.79	1,289,796.621	3,128,033.989	40.127978	-105.042125
8,800.00	90.00	180.40	7,389.00	-1,374.43	289.40	1,289,596.622	3,128,033.623	40.127429	-105.042130
9,000.00	90.00	180.40	7,389.00	-1,574.43	288.00	1,289,396.622	3,128,033.257	40.126880	-105.042135
9,200.00	90.00	180.40	7,389.00	-1,774.42	286.60	1,289,196.622	3,128,032.891	40.126331	-105.042140

Database:	EDM 5000.14 Single User Db	Local Co-ordinate Reference:	Well REGNIER FARMS 1E-19H-B268
Company:	Crestone Peak Resources	TVD Reference:	WELL @ 4989.00usft (Original Well Elev)
Project:	Sec 19 T2N-R68W	MD Reference:	WELL @ 4989.00usft (Original Well Elev)
Site:	Regnier Farms Pad	North Reference:	True
Well:	REGNIER FARMS 1E-19H-B268	Survey Calculation Method:	Minimum Curvature
Wellbore:	Wellbore #1		
Design:	Design #1 22Mar18 kjs		

Planned Survey									
Measured Depth (usft)	Inclination (°)	Azimuth (°)	Vertical Depth (usft)	+N/-S (usft)	+E/-W (usft)	Map Northing (usft)	Map Easting (usft)	Latitude	Longitude
9,400.00	90.00	180.40	7,389.00	-1,974.42	285.21	1,288,996.623	3,128,032.525	40.125782	-105.042145
9,600.00	90.00	180.40	7,389.00	-2,174.41	283.81	1,288,796.623	3,128,032.159	40.125233	-105.042150
9,800.00	90.00	180.40	7,389.00	-2,374.41	282.42	1,288,596.623	3,128,031.793	40.124684	-105.042155
10,000.00	90.00	180.40	7,389.00	-2,574.41	281.02	1,288,396.624	3,128,031.427	40.124135	-105.042160
10,200.00	90.00	180.40	7,389.00	-2,774.40	279.62	1,288,196.624	3,128,031.061	40.123586	-105.042165
10,400.00	90.00	180.40	7,389.00	-2,974.40	278.23	1,287,996.624	3,128,030.696	40.123037	-105.042170
10,600.00	90.00	180.40	7,389.00	-3,174.39	276.83	1,287,796.625	3,128,030.330	40.122488	-105.042175
10,800.00	90.00	180.40	7,389.00	-3,374.39	275.43	1,287,596.625	3,128,029.964	40.121939	-105.042180
11,000.00	90.00	180.40	7,389.00	-3,574.38	274.04	1,287,396.625	3,128,029.598	40.121390	-105.042185
11,200.00	90.00	180.40	7,389.00	-3,774.38	272.64	1,287,196.626	3,128,029.232	40.120841	-105.042190
11,400.00	90.00	180.40	7,389.00	-3,974.37	271.25	1,286,996.626	3,128,028.866	40.120291	-105.042195
11,600.00	90.00	180.40	7,389.00	-4,174.37	269.85	1,286,796.626	3,128,028.500	40.119742	-105.042200
11,800.00	90.00	180.40	7,389.00	-4,374.36	268.45	1,286,596.627	3,128,028.134	40.119193	-105.042205
12,000.00	90.00	180.40	7,389.00	-4,574.36	267.06	1,286,396.627	3,128,027.768	40.118644	-105.042210
12,200.00	90.00	180.40	7,389.00	-4,774.35	265.66	1,286,196.627	3,128,027.402	40.118095	-105.042215
12,400.00	90.00	180.40	7,389.00	-4,974.35	264.26	1,285,996.628	3,128,027.037	40.117546	-105.042220
12,600.00	90.00	180.40	7,389.00	-5,174.34	262.87	1,285,796.628	3,128,026.671	40.116997	-105.042225
12,800.00	90.00	180.40	7,389.00	-5,374.34	261.47	1,285,596.629	3,128,026.305	40.116448	-105.042230
13,000.00	90.00	180.40	7,389.00	-5,574.33	260.08	1,285,396.629	3,128,025.939	40.115899	-105.042235
13,200.00	90.00	180.40	7,389.00	-5,774.33	258.68	1,285,196.629	3,128,025.573	40.115350	-105.042240
13,400.00	90.00	180.40	7,389.00	-5,974.32	257.28	1,284,996.630	3,128,025.207	40.114801	-105.042245
13,600.00	90.00	180.40	7,389.00	-6,174.32	255.89	1,284,796.630	3,128,024.841	40.114252	-105.042250
13,800.00	90.00	180.40	7,389.00	-6,374.31	254.49	1,284,596.630	3,128,024.475	40.113703	-105.042255
13,813.07	90.00	180.40	7,389.00	-6,387.38	254.40	1,284,583.560	3,128,024.451	40.113667	-105.042256
Start Turn 2.00									
13,873.07	90.00	181.60	7,389.00	-6,447.37	253.35	1,284,523.566	3,128,023.713	40.113503	-105.042260
Hold 181.6									
14,000.00	90.00	181.60	7,389.00	-6,574.25	249.81	1,284,396.669	3,128,020.823	40.113154	-105.042272
14,200.00	90.00	181.60	7,389.00	-6,774.17	244.22	1,284,196.721	3,128,016.269	40.112606	-105.042292
14,400.00	90.00	181.60	7,389.00	-6,974.10	238.64	1,283,996.773	3,128,011.714	40.112057	-105.042312
14,600.00	90.00	181.60	7,389.00	-7,174.02	233.05	1,283,796.824	3,128,007.160	40.111508	-105.042332
14,800.00	90.00	181.60	7,389.00	-7,373.94	227.47	1,283,596.876	3,128,002.606	40.110959	-105.042352
15,000.00	90.00	181.60	7,389.00	-7,573.86	221.89	1,283,396.928	3,127,998.051	40.110410	-105.042372
15,200.00	90.00	181.60	7,389.00	-7,773.78	216.30	1,283,196.980	3,127,993.497	40.109862	-105.042392
15,400.00	90.00	181.60	7,389.00	-7,973.71	210.72	1,282,997.032	3,127,988.943	40.109313	-105.042412
15,600.00	90.00	181.60	7,389.00	-8,173.63	205.13	1,282,797.084	3,127,984.388	40.108764	-105.042432
15,800.00	90.00	181.60	7,389.00	-8,373.55	199.55	1,282,597.136	3,127,979.834	40.108215	-105.042452
16,000.00	90.00	181.60	7,389.00	-8,573.47	193.96	1,282,397.188	3,127,975.280	40.107666	-105.042472
16,200.00	90.00	181.60	7,389.00	-8,773.39	188.38	1,282,197.239	3,127,970.726	40.107117	-105.042492
16,400.00	90.00	181.60	7,389.00	-8,973.32	182.80	1,281,997.291	3,127,966.171	40.106569	-105.042512
16,600.00	90.00	181.60	7,389.00	-9,173.24	177.21	1,281,797.343	3,127,961.617	40.106020	-105.042532
16,800.00	90.00	181.60	7,389.00	-9,373.16	171.63	1,281,597.395	3,127,957.063	40.105471	-105.042552
17,000.00	90.00	181.60	7,389.00	-9,573.08	166.04	1,281,397.447	3,127,952.508	40.104922	-105.042572
17,200.00	90.00	181.60	7,389.00	-9,773.00	160.46	1,281,197.499	3,127,947.954	40.104373	-105.042592
17,400.00	90.00	181.60	7,389.00	-9,972.93	154.87	1,280,997.551	3,127,943.400	40.103825	-105.042612
17,600.00	90.00	181.60	7,389.00	-10,172.85	149.29	1,280,797.602	3,127,938.845	40.103276	-105.042632
17,800.00	90.00	181.60	7,389.00	-10,372.77	143.71	1,280,597.654	3,127,934.291	40.102727	-105.042652
18,000.00	90.00	181.60	7,389.00	-10,572.69	138.12	1,280,397.706	3,127,929.737	40.102178	-105.042672
18,200.00	90.00	181.60	7,389.00	-10,772.62	132.54	1,280,197.758	3,127,925.183	40.101629	-105.042692
18,400.00	90.00	181.60	7,389.00	-10,972.54	126.95	1,279,997.810	3,127,920.628	40.101080	-105.042712
18,600.00	90.00	181.60	7,389.00	-11,172.46	121.37	1,279,797.862	3,127,916.074	40.100532	-105.042732
18,800.00	90.00	181.60	7,389.00	-11,372.38	115.78	1,279,597.914	3,127,911.520	40.099983	-105.042751
19,000.00	90.00	181.60	7,389.00	-11,572.30	110.20	1,279,397.966	3,127,906.965	40.099434	-105.042771
19,200.00	90.00	181.60	7,389.00	-11,772.23	104.62	1,279,198.017	3,127,902.411	40.098885	-105.042791

Database:	EDM 5000.14 Single User Db	Local Co-ordinate Reference:	Well REGNIER FARMS 1E-19H-B268
Company:	Crestone Peak Resources	TVD Reference:	WELL @ 4989.00usft (Original Well Elev)
Project:	Sec 19 T2N-R68W	MD Reference:	WELL @ 4989.00usft (Original Well Elev)
Site:	Regnier Farms Pad	North Reference:	True
Well:	REGNIER FARMS 1E-19H-B268	Survey Calculation Method:	Minimum Curvature
Wellbore:	Wellbore #1		
Design:	Design #1 22Mar18 kjs		

Planned Survey									
Measured Depth (usft)	Inclination (°)	Azimuth (°)	Vertical Depth (usft)	+N/-S (usft)	+E/-W (usft)	Map Northing (usft)	Map Easting (usft)	Latitude	Longitude
19,400.00	90.00	181.60	7,389.00	-11,972.15	99.03	1,278,998.069	3,127,897.857	40.098336	-105.042811
19,600.00	90.00	181.60	7,389.00	-12,172.07	93.45	1,278,798.121	3,127,893.302	40.097788	-105.042831
19,800.00	90.00	181.60	7,389.00	-12,371.99	87.86	1,278,598.173	3,127,888.748	40.097239	-105.042851
19,873.07	90.00	181.60	7,389.00	-12,445.03	85.82	1,278,525.122	3,127,887.084	40.097038	-105.042859
Start Turn 2/100									
20,000.00	90.00	179.06	7,389.00	-12,571.95	85.09	1,278,398.202	3,127,887.006	40.096690	-105.042861
20,104.89	90.00	176.96	7,389.00	-12,676.77	88.73	1,278,293.402	3,127,891.183	40.096402	-105.042848
Hold 176.96 Az									
20,200.00	90.00	176.96	7,389.00	-12,771.75	93.76	1,278,198.452	3,127,896.710	40.096141	-105.042830
20,400.00	90.00	176.96	7,389.00	-12,971.47	104.36	1,277,998.790	3,127,908.333	40.095593	-105.042792
20,600.00	90.00	176.96	7,389.00	-13,171.19	114.95	1,277,799.128	3,127,919.955	40.095045	-105.042754
20,800.00	90.00	176.96	7,389.00	-13,370.91	125.55	1,277,599.466	3,127,931.578	40.094497	-105.042717
21,000.00	90.00	176.96	7,389.00	-13,570.62	136.14	1,277,399.804	3,127,943.201	40.093948	-105.042679
21,200.00	90.00	176.96	7,389.00	-13,770.34	146.73	1,277,200.142	3,127,954.823	40.093400	-105.042641
21,400.00	90.00	176.96	7,389.00	-13,970.06	157.33	1,277,000.480	3,127,966.446	40.092852	-105.042603
21,600.00	90.00	176.96	7,389.00	-14,169.78	167.92	1,276,800.818	3,127,978.069	40.092304	-105.042565
21,800.00	90.00	176.96	7,389.00	-14,369.50	178.52	1,276,601.156	3,127,989.691	40.091755	-105.042527
22,000.00	90.00	176.96	7,389.00	-14,569.22	189.11	1,276,401.494	3,128,001.314	40.091207	-105.042489
22,200.00	90.00	176.96	7,389.00	-14,768.94	199.70	1,276,201.832	3,128,012.937	40.090659	-105.042452
22,400.00	90.00	176.96	7,389.00	-14,968.66	210.30	1,276,002.170	3,128,024.559	40.090110	-105.042414
22,600.00	90.00	176.96	7,389.00	-15,168.38	220.89	1,275,802.508	3,128,036.182	40.089562	-105.042376
22,800.00	90.00	176.96	7,389.00	-15,368.10	231.49	1,275,602.846	3,128,047.804	40.089014	-105.042338
22,817.05	90.00	176.96	7,389.00	-15,385.12	232.39	1,275,585.825	3,128,048.795	40.088967	-105.042335
TD at 22817.05									

Design Targets									
Target Name	Dip Angle (°)	Dip Dir. (°)	TVD (usft)	+N/-S (usft)	+E/-W (usft)	Northing (usft)	Easting (usft)	Latitude	Longitude
- hit/miss target									
- Shape									
REGNIER FARMS 1E-1'	0.00	0.00	7,389.00	-15,385.13	232.39	1,275,585.823	3,128,048.795	40.088967	-105.042335
- plan hits target center									
- Point									
REGNIER FARMS 1E-1'	0.00	0.00	7,389.00	-387.53	296.29	1,290,583.550	3,128,035.428	40.130138	-105.042106
- plan hits target center									
- Point									

Plan Annotations					
Measured Depth (usft)	Vertical Depth (usft)	Local Coordinates			
		+N/-S (usft)	+E/-W (usft)	Comment	
400.00	400.00	0.00	0.00	Start Build 2.00	
597.55	597.39	5.27	4.31	Hold 3.95 Inc, 39.32 Az	
6,649.66	6,635.12	327.85	268.57	KOP 8/100	
7,813.07	7,389.00	-387.53	296.29	LP 90 Inc, 180.4 Az	
13,813.07	7,389.00	-6,387.38	254.40	Start Turn 2.00	
13,873.07	7,389.00	-6,447.37	253.35	Hold 181.6	
19,873.07	7,389.00	-12,445.03	85.82	Start Turn 2/100	
20,104.89	7,389.00	-12,676.77	88.73	Hold 176.96 Az	
22,817.05	7,389.00	-15,385.12	232.39	TD at 22817.05	