



# Crestone Peak Resources

Well Name:

**REGNIER FARMS 1B-19H-B268**

Project Name:

**Sec 19 T2N-R68W**

Pad Name:

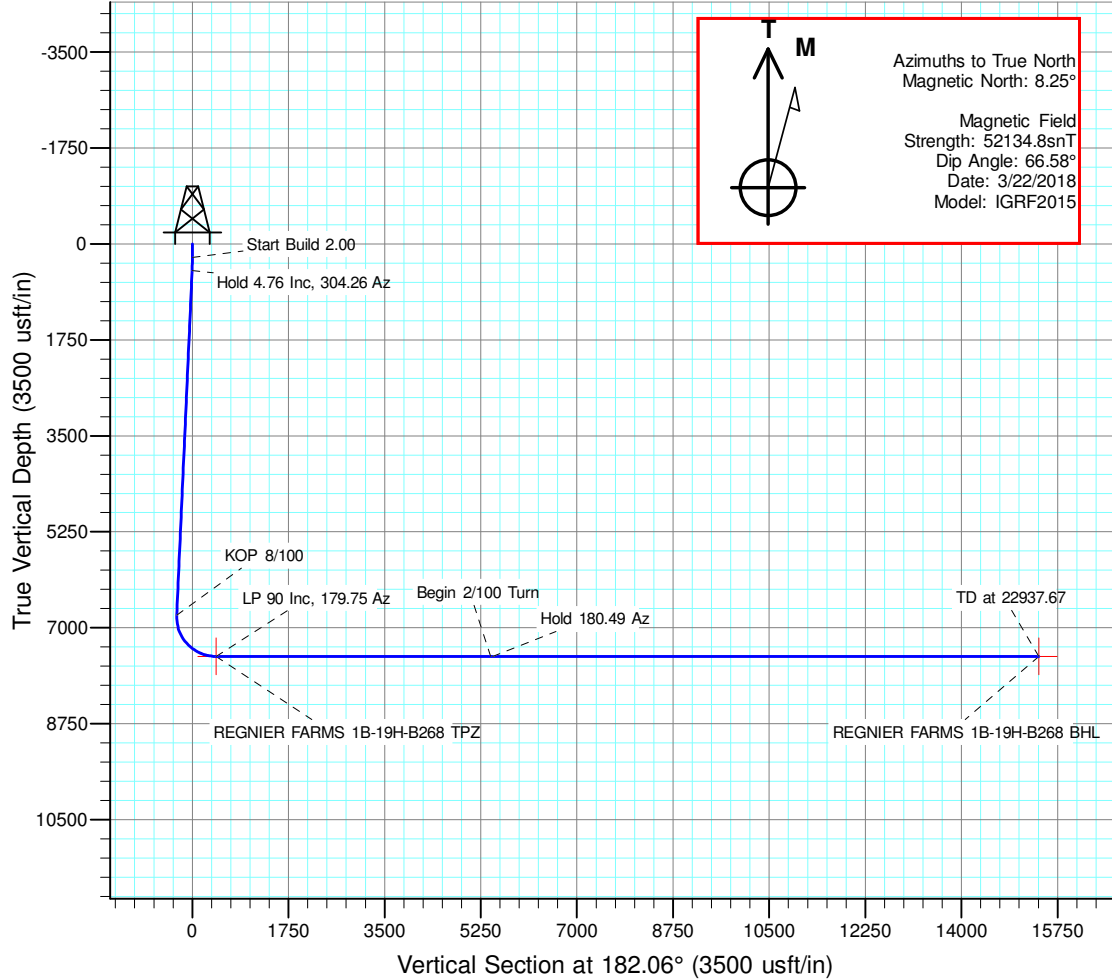
**Regnier Farms Pad**

## ANNOTATIONS

MD	Inc	Azi	TVD	+N/-S	+E/-W	Vsect	Departure	Annotation
250.00	0.00	0.00	250.00	0.00	0.00	0.00	0.00	Start Build 2.00
487.91	4.76	304.26	487.64	5.56	-8.16	-5.26	9.87	Hold 4.76 Inc, 304.26 Az
6796.92	4.76	304.26	6774.90	300.18	-440.68	-284.18	533.20	KOP 8/100
7955.59	90.00	179.75	7523.00	-415.45	-488.87	432.72	1258.31	LP 90 Inc, 179.75 Az
12955.59	90.00	179.75	7523.00	-5415.40	-467.05	5428.67	6258.31	Begin 2/100 Turn
12992.72	90.00	180.49	7523.00	-5452.53	-467.13	5465.78	6295.44	Hold 180.49 Az
22937.67	90.00	180.49	7523.00	-15397.11	-552.64	15407.03	16239.39	TD at 22937.67

## DESIGN TARGET DETAILS

Name	TVD	+N/-S	+E/-W	Northing	Easting	Latitude	Longitude	Shape
REGNIER FARMS 1B-19H-B268 BHL	7523.00	-15397.11	-552.64	1275568.493	3127233.845	40.088931	-105.045248	Point
REGNIER FARMS 1B-19H-B268 TPZ	7523.00	-415.45	-488.87	1290550.291	3127220.458	40.130058	-105.045021	Point

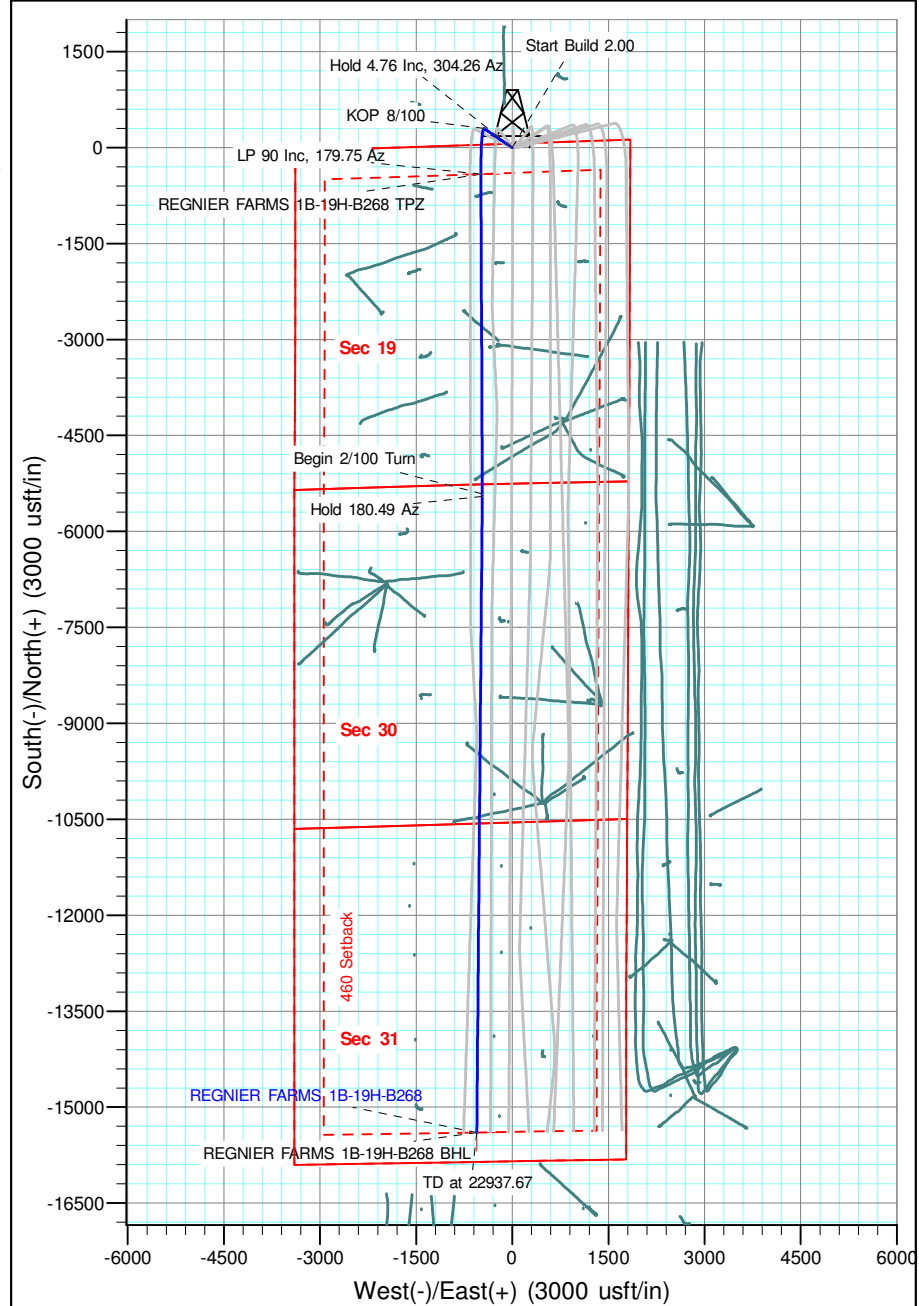


## Geodetic Datum:

North American Datum 1983  
US State Plane 1983, Colorado Northern Zone

## Elevation:

Ground Elevation: 4966.00  
KB Elevation: WELL @ 4989.00usft (Original Well Elev)





# **Crestone Peak Resources**

**Sec 19 T2N-R68W**

**Regnier Farms Pad**

**REGNIER FARMS 1B-19H-B268**

**Wellbore #1**

**Plan: Design #1 22Mar18 kjs**

## **Standard Planning Report - Geographic**

**03 April, 2018**

<b>Database:</b>	EDM 5000.14 Single User Db	<b>Local Co-ordinate Reference:</b>	Well REGNIER FARMS 1B-19H-B268
<b>Company:</b>	Crestone Peak Resources	<b>TVD Reference:</b>	WELL @ 4989.00usft (Original Well Elev)
<b>Project:</b>	Sec 19 T2N-R68W	<b>MD Reference:</b>	WELL @ 4989.00usft (Original Well Elev)
<b>Site:</b>	Regnier Farms Pad	<b>North Reference:</b>	True
<b>Well:</b>	REGNIER FARMS 1B-19H-B268	<b>Survey Calculation Method:</b>	Minimum Curvature
<b>Wellbore:</b>	Wellbore #1		
<b>Design:</b>	Design #1 22Mar18 kjs		

<b>Project</b>	Sec 19 T2N-R68W, Weld County, CO		
<b>Map System:</b>	US State Plane 1983	<b>System Datum:</b>	Mean Sea Level
<b>Geo Datum:</b>	North American Datum 1983		
<b>Map Zone:</b>	Colorado Northern Zone		

Site		Regnier Farms Pad			
Site Position:		Northing:	1,290,967.816 usft	Latitude:	40.131198
From:	Map	Easting:	3,127,697.187 usft	Longitude:	-105.043308
Position Uncertainty:	0.00 usft	Slot Radius:	13-3/16 "	Grid Convergence:	0.30 °

Well	REGNIER FARMS 1B-19H-B268					
Well Position	+N/-S	0.00 usft	Northing:	1,290,968.249 usft	Latitude:	40.131199
	+E/-W	0.00 usft	Easting:	3,127,707.177 usft	Longitude:	-105.043272
Position Uncertainty		0.00 usft	Wellhead Elevation:		Ground Level:	4,966.00 usft

<b>Wellbore</b>	Wellbore #1				
<b>Magnetics</b>	<b>Model Name</b>	<b>Sample Date</b>	<b>Declination (°)</b>	<b>Dip Angle (°)</b>	<b>Field Strength (nT)</b>
	IGRF2015	3/22/2018	8.25	66.58	52,134.83837883

<b>Design</b>	Design #1 22Mar18 kjs			
<b>Audit Notes:</b>				
<b>Version:</b>	<b>Phase:</b>	PLAN	<b>Tie On Depth:</b>	0.00
<b>Vertical Section:</b>	<b>Depth From (TVD) (usft)</b>	<b>+N/-S (usft)</b>	<b>+E/-W (usft)</b>	<b>Direction (°)</b>
	0.00	0.00	0.00	182.06

<b>Plan Survey Tool Program</b>	<b>Date</b>	4/3/2018		
<b>Depth From (usft)</b>	<b>Depth To (usft)</b>	<b>Survey (Wellbore)</b>	<b>Tool Name</b>	<b>Remarks</b>
1	0.00	22,937.24 Design #1 22Mar18 kjs (Wellbore)	MWD	
			OWSG MWD - Standard	

<b>Plan Sections</b>										
<b>Measured Depth (usft)</b>	<b>Inclination (°)</b>	<b>Azimuth (°)</b>	<b>Vertical Depth (usft)</b>	<b>+N/-S (usft)</b>	<b>+E/-W (usft)</b>	<b>Dogleg Rate (°/100usft)</b>	<b>Build Rate (°/100usft)</b>	<b>Turn Rate (°/100usft)</b>	<b>TFO (°)</b>	<b>Target</b>
0.00	0.00	0.00	0.00	0.00	0.00	0.00	0.00	0.00	0.00	
250.00	0.00	0.00	250.00	0.00	0.00	0.00	0.00	0.00	0.00	
487.91	4.76	304.26	487.63	5.56	-8.16	2.00	2.00	0.00	304.26	
6,796.92	4.76	304.26	6,774.90	300.18	-440.68	0.00	0.00	0.00	0.00	
7,955.59	90.00	179.75	7,523.00	-415.45	-488.87	8.00	7.36	-10.75	-124.42	REGNIER FARMS 1E
12,955.59	90.00	179.75	7,523.00	-5,415.40	-467.05	0.00	0.00	0.00	0.00	
12,992.72	90.00	180.49	7,523.00	-5,452.53	-467.13	2.00	0.00	2.00	90.00	
22,937.67	90.00	180.49	7,523.00	-15,397.11	-552.64	0.00	0.00	0.00	0.00	REGNIER FARMS 1E

<b>Database:</b>	EDM 5000.14 Single User Db	<b>Local Co-ordinate Reference:</b>	Well REGNIER FARMS 1B-19H-B268
<b>Company:</b>	Crestone Peak Resources	<b>TVD Reference:</b>	WELL @ 4989.00usft (Original Well Elev)
<b>Project:</b>	Sec 19 T2N-R68W	<b>MD Reference:</b>	WELL @ 4989.00usft (Original Well Elev)
<b>Site:</b>	Regnier Farms Pad	<b>North Reference:</b>	True
<b>Well:</b>	REGNIER FARMS 1B-19H-B268	<b>Survey Calculation Method:</b>	Minimum Curvature
<b>Wellbore:</b>	Wellbore #1		
<b>Design:</b>	Design #1 22Mar18 kjs		

Planned Survey									
Measured Depth (usft)	Inclination (°)	Azimuth (°)	Vertical Depth (usft)	+N/-S (usft)	+E/-W (usft)	Map Northing (usft)	Map Easting (usft)	Latitude	Longitude
0.00	0.00	0.00	0.00	0.00	0.00	1,290,968.249	3,127,707.177	40.131199	-105.043273
200.00	0.00	0.00	200.00	0.00	0.00	1,290,968.249	3,127,707.177	40.131199	-105.043273
250.00	0.00	0.00	250.00	0.00	0.00	1,290,968.249	3,127,707.177	40.131199	-105.043273
<b>Start Build 2.00</b>									
400.00	3.00	304.26	399.93	2.21	-3.24	1,290,970.442	3,127,703.921	40.131205	-105.043284
487.91	4.76	304.26	487.64	5.56	-8.16	1,290,973.765	3,127,698.989	40.131214	-105.043302
<b>Hold 4.76 Inc, 304.26 Az</b>									
600.00	4.76	304.26	599.34	10.79	-15.84	1,290,978.960	3,127,691.278	40.131228	-105.043329
800.00	4.76	304.26	798.65	20.13	-29.56	1,290,988.229	3,127,677.519	40.131254	-105.043378
1,000.00	4.76	304.26	997.96	29.47	-43.27	1,290,997.497	3,127,663.760	40.131279	-105.043427
1,200.00	4.76	304.26	1,197.27	38.81	-56.98	1,291,006.766	3,127,650.001	40.131305	-105.043476
1,400.00	4.76	304.26	1,396.58	48.15	-70.69	1,291,016.035	3,127,636.242	40.131331	-105.043525
1,600.00	4.76	304.26	1,595.89	57.49	-84.40	1,291,025.304	3,127,622.483	40.131356	-105.043574
1,800.00	4.76	304.26	1,795.20	66.83	-98.11	1,291,034.573	3,127,608.724	40.131382	-105.043623
2,000.00	4.76	304.26	1,994.52	76.17	-111.82	1,291,043.842	3,127,594.965	40.131408	-105.043672
2,200.00	4.76	304.26	2,193.83	85.51	-125.53	1,291,053.111	3,127,581.206	40.131433	-105.043722
2,400.00	4.76	304.26	2,393.14	94.85	-139.24	1,291,062.380	3,127,567.447	40.131459	-105.043771
2,600.00	4.76	304.26	2,592.45	104.19	-152.96	1,291,071.649	3,127,553.688	40.131485	-105.043820
2,800.00	4.76	304.26	2,791.76	113.53	-166.67	1,291,080.917	3,127,539.929	40.131510	-105.043869
3,000.00	4.76	304.26	2,991.07	122.87	-180.38	1,291,090.186	3,127,526.170	40.131536	-105.043918
3,200.00	4.76	304.26	3,190.38	132.21	-194.09	1,291,099.455	3,127,512.410	40.131562	-105.043967
3,400.00	4.76	304.26	3,389.69	141.55	-207.80	1,291,108.724	3,127,498.651	40.131587	-105.044016
3,600.00	4.76	304.26	3,589.00	150.89	-221.51	1,291,117.993	3,127,484.892	40.131613	-105.044065
3,800.00	4.76	304.26	3,788.31	160.23	-235.22	1,291,127.262	3,127,471.133	40.131638	-105.044114
4,000.00	4.76	304.26	3,987.62	169.57	-248.93	1,291,136.531	3,127,457.374	40.131664	-105.044163
4,200.00	4.76	304.26	4,186.93	178.91	-262.64	1,291,145.800	3,127,443.615	40.131690	-105.044212
4,400.00	4.76	304.26	4,386.24	188.25	-276.36	1,291,155.069	3,127,429.856	40.131715	-105.044261
4,600.00	4.76	304.26	4,585.56	197.59	-290.07	1,291,164.337	3,127,416.097	40.131741	-105.044310
4,800.00	4.76	304.26	4,784.87	206.93	-303.78	1,291,173.606	3,127,402.338	40.131767	-105.044359
5,000.00	4.76	304.26	4,984.18	216.26	-317.49	1,291,182.875	3,127,388.579	40.131792	-105.044408
5,200.00	4.76	304.26	5,183.49	225.60	-331.20	1,291,192.144	3,127,374.820	40.131818	-105.044457
5,400.00	4.76	304.26	5,382.80	234.94	-344.91	1,291,201.413	3,127,361.061	40.131844	-105.044506
5,600.00	4.76	304.26	5,582.11	244.28	-358.62	1,291,210.682	3,127,347.302	40.131869	-105.044555
5,800.00	4.76	304.26	5,781.42	253.62	-372.33	1,291,219.951	3,127,333.543	40.131895	-105.044604
6,000.00	4.76	304.26	5,980.73	262.96	-386.04	1,291,229.220	3,127,319.784	40.131920	-105.044653
6,200.00	4.76	304.26	6,180.04	272.30	-399.76	1,291,238.489	3,127,306.025	40.131946	-105.044702
6,400.00	4.76	304.26	6,379.35	281.64	-413.47	1,291,247.757	3,127,292.266	40.131972	-105.044751
6,600.00	4.76	304.26	6,578.66	290.98	-427.18	1,291,257.026	3,127,278.507	40.131997	-105.044800
6,796.92	4.76	304.26	6,774.90	300.18	-440.68	1,291,266.152	3,127,264.960	40.132023	-105.044849
<b>KOP 8/100</b>									
6,800.00	4.62	301.74	6,777.97	300.31	-440.89	1,291,266.289	3,127,264.748	40.132023	-105.044849
7,000.00	14.10	195.60	6,975.92	280.97	-454.38	1,291,246.870	3,127,251.355	40.131970	-105.044898
7,200.00	29.79	186.63	7,160.90	207.68	-466.75	1,291,173.519	3,127,239.365	40.131769	-105.044942
7,400.00	45.68	183.59	7,318.57	86.13	-477.03	1,291,051.919	3,127,229.708	40.131435	-105.044979
7,600.00	61.63	181.87	7,436.73	-74.26	-484.44	1,290,891.490	3,127,223.130	40.130995	-105.045005
7,800.00	77.58	180.62	7,506.21	-261.07	-488.39	1,290,704.662	3,127,220.142	40.130482	-105.045019
7,955.59	90.00	179.75	7,523.00	-415.45	-488.87	1,290,550.289	3,127,220.458	40.130058	-105.045021
<b>LP 90 Inc, 179.75 Az</b>									
8,000.00	90.00	179.75	7,523.00	-459.86	-488.67	1,290,505.881	3,127,220.881	40.129936	-105.045020
8,200.00	90.00	179.75	7,523.00	-659.85	-487.80	1,290,305.890	3,127,222.784	40.129387	-105.045017
8,400.00	90.00	179.75	7,523.00	-859.85	-486.93	1,290,105.899	3,127,224.686	40.128838	-105.045014
8,600.00	90.00	179.75	7,523.00	-1,059.85	-486.05	1,289,905.908	3,127,226.589	40.128289	-105.045011
8,800.00	90.00	179.75	7,523.00	-1,259.85	-485.18	1,289,705.917	3,127,228.492	40.127740	-105.045008
9,000.00	90.00	179.75	7,523.00	-1,459.85	-484.31	1,289,505.926	3,127,230.395	40.127191	-105.045005

<b>Database:</b>	EDM 5000.14 Single User Db	<b>Local Co-ordinate Reference:</b>	Well REGNIER FARMS 1B-19H-B268
<b>Company:</b>	Crestone Peak Resources	<b>TVD Reference:</b>	WELL @ 4989.00usft (Original Well Elev)
<b>Project:</b>	Sec 19 T2N-R68W	<b>MD Reference:</b>	WELL @ 4989.00usft (Original Well Elev)
<b>Site:</b>	Regnier Farms Pad	<b>North Reference:</b>	True
<b>Well:</b>	REGNIER FARMS 1B-19H-B268	<b>Survey Calculation Method:</b>	Minimum Curvature
<b>Wellbore:</b>	Wellbore #1		
<b>Design:</b>	Design #1 22Mar18 kjs		

Planned Survey									
Measured Depth (usft)	Inclination (°)	Azimuth (°)	Vertical Depth (usft)	+N/-S (usft)	+E/-W (usft)	Map Northing (usft)	Map Easting (usft)	Latitude	Longitude
9,200.00	90.00	179.75	7,523.00	-1,659.85	-483.44	1,289,305.935	3,127,232.298	40.126642	-105.045001
9,400.00	90.00	179.75	7,523.00	-1,859.84	-482.56	1,289,105.945	3,127,234.200	40.126093	-105.044998
9,600.00	90.00	179.75	7,523.00	-2,059.84	-481.69	1,288,905.954	3,127,236.103	40.125544	-105.044995
9,800.00	90.00	179.75	7,523.00	-2,259.84	-480.82	1,288,705.963	3,127,238.006	40.124995	-105.044992
10,000.00	90.00	179.75	7,523.00	-2,459.84	-479.94	1,288,505.972	3,127,239.909	40.124446	-105.044989
10,200.00	90.00	179.75	7,523.00	-2,659.84	-479.07	1,288,305.981	3,127,241.811	40.123897	-105.044986
10,400.00	90.00	179.75	7,523.00	-2,859.83	-478.20	1,288,105.990	3,127,243.714	40.123348	-105.044983
10,600.00	90.00	179.75	7,523.00	-3,059.83	-477.33	1,287,905.999	3,127,245.617	40.122799	-105.044979
10,800.00	90.00	179.75	7,523.00	-3,259.83	-476.45	1,287,706.008	3,127,247.520	40.122250	-105.044976
11,000.00	90.00	179.75	7,523.00	-3,459.83	-475.58	1,287,506.017	3,127,249.422	40.121701	-105.044973
11,200.00	90.00	179.75	7,523.00	-3,659.83	-474.71	1,287,306.026	3,127,251.325	40.121152	-105.044970
11,400.00	90.00	179.75	7,523.00	-3,859.82	-473.84	1,287,106.035	3,127,253.228	40.120603	-105.044967
11,600.00	90.00	179.75	7,523.00	-4,059.82	-472.96	1,286,906.044	3,127,255.131	40.120054	-105.044964
11,800.00	90.00	179.75	7,523.00	-4,259.82	-472.09	1,286,706.053	3,127,257.033	40.119505	-105.044961
12,000.00	90.00	179.75	7,523.00	-4,459.82	-471.22	1,286,506.062	3,127,258.936	40.118956	-105.044958
12,200.00	90.00	179.75	7,523.00	-4,659.82	-470.35	1,286,306.071	3,127,260.839	40.118407	-105.044954
12,400.00	90.00	179.75	7,523.00	-4,859.81	-469.47	1,286,106.080	3,127,262.742	40.117858	-105.044951
12,600.00	90.00	179.75	7,523.00	-5,059.81	-468.60	1,285,906.089	3,127,264.644	40.117309	-105.044948
12,800.00	90.00	179.75	7,523.00	-5,259.81	-467.73	1,285,706.099	3,127,266.547	40.116760	-105.044945
12,955.59	90.00	179.75	7,523.00	-5,415.40	-467.05	1,285,550.516	3,127,268.027	40.116333	-105.044943
Begin 2/100 Turn									
12,992.72	90.00	180.49	7,523.00	-5,452.53	-467.13	1,285,513.386	3,127,268.140	40.116231	-105.044943
Hold 180.49 Az									
13,000.00	90.00	180.49	7,523.00	-5,459.81	-467.19	1,285,506.106	3,127,268.115	40.116211	-105.044943
13,200.00	90.00	180.49	7,523.00	-5,659.80	-468.91	1,285,306.107	3,127,267.425	40.115662	-105.044949
13,400.00	90.00	180.49	7,523.00	-5,859.79	-470.63	1,285,106.108	3,127,266.735	40.115113	-105.044955
13,600.00	90.00	180.49	7,523.00	-6,059.79	-472.35	1,284,906.110	3,127,266.046	40.114564	-105.044961
13,800.00	90.00	180.49	7,523.00	-6,259.78	-474.07	1,284,706.111	3,127,265.356	40.114015	-105.044968
14,000.00	90.00	180.49	7,523.00	-6,459.77	-475.79	1,284,506.112	3,127,264.666	40.113466	-105.044974
14,200.00	90.00	180.49	7,523.00	-6,659.76	-477.51	1,284,306.113	3,127,263.977	40.112917	-105.044980
14,400.00	90.00	180.49	7,523.00	-6,859.76	-479.23	1,284,106.114	3,127,263.287	40.112368	-105.044986
14,600.00	90.00	180.49	7,523.00	-7,059.75	-480.95	1,283,906.116	3,127,262.597	40.111819	-105.044992
14,800.00	90.00	180.49	7,523.00	-7,259.74	-482.67	1,283,706.117	3,127,261.908	40.111270	-105.044998
15,000.00	90.00	180.49	7,523.00	-7,459.74	-484.39	1,283,506.118	3,127,261.218	40.110720	-105.045004
15,200.00	90.00	180.49	7,523.00	-7,659.73	-486.11	1,283,306.119	3,127,260.528	40.110171	-105.045011
15,400.00	90.00	180.49	7,523.00	-7,859.72	-487.83	1,283,106.120	3,127,259.839	40.109622	-105.045017
15,600.00	90.00	180.49	7,523.00	-8,059.71	-489.55	1,282,906.122	3,127,259.149	40.109073	-105.045023
15,800.00	90.00	180.49	7,523.00	-8,259.71	-491.27	1,282,706.123	3,127,258.459	40.108524	-105.045029
16,000.00	90.00	180.49	7,523.00	-8,459.70	-492.99	1,282,506.124	3,127,257.770	40.107975	-105.045035
16,200.00	90.00	180.49	7,523.00	-8,659.69	-494.71	1,282,306.125	3,127,257.080	40.107426	-105.045041
16,400.00	90.00	180.49	7,523.00	-8,859.68	-496.43	1,282,106.126	3,127,256.390	40.106877	-105.045047
16,600.00	90.00	180.49	7,523.00	-9,059.68	-498.15	1,281,906.128	3,127,255.700	40.106328	-105.045053
16,800.00	90.00	180.49	7,523.00	-9,259.67	-499.87	1,281,706.129	3,127,255.011	40.105779	-105.045060
17,000.00	90.00	180.49	7,523.00	-9,459.66	-501.59	1,281,506.130	3,127,254.321	40.105230	-105.045066
17,200.00	90.00	180.49	7,523.00	-9,659.65	-503.31	1,281,306.131	3,127,253.631	40.104681	-105.045072
17,400.00	90.00	180.49	7,523.00	-9,859.65	-505.03	1,281,106.132	3,127,252.942	40.104132	-105.045078
17,600.00	90.00	180.49	7,523.00	-10,059.64	-506.74	1,280,906.134	3,127,252.252	40.103583	-105.045084
17,800.00	90.00	180.49	7,523.00	-10,259.63	-508.46	1,280,706.135	3,127,251.562	40.103034	-105.045090
18,000.00	90.00	180.49	7,523.00	-10,459.62	-510.18	1,280,506.136	3,127,250.873	40.102485	-105.045096
18,200.00	90.00	180.49	7,523.00	-10,659.62	-511.90	1,280,306.137	3,127,250.183	40.101936	-105.045103
18,400.00	90.00	180.49	7,523.00	-10,859.61	-513.62	1,280,106.138	3,127,249.493	40.101387	-105.045109
18,600.00	90.00	180.49	7,523.00	-11,059.60	-515.34	1,279,906.140	3,127,248.804	40.100838	-105.045115
18,800.00	90.00	180.49	7,523.00	-11,259.59	-517.06	1,279,706.141	3,127,248.114	40.100289	-105.045121
19,000.00	90.00	180.49	7,523.00	-11,459.59	-518.78	1,279,506.142	3,127,247.424	40.099740	-105.045127

<b>Database:</b>	EDM 5000.14 Single User Db	<b>Local Co-ordinate Reference:</b>	Well REGNIER FARMS 1B-19H-B268
<b>Company:</b>	Crestone Peak Resources	<b>TVD Reference:</b>	WELL @ 4989.00usft (Original Well Elev)
<b>Project:</b>	Sec 19 T2N-R68W	<b>MD Reference:</b>	WELL @ 4989.00usft (Original Well Elev)
<b>Site:</b>	Regnier Farms Pad	<b>North Reference:</b>	True
<b>Well:</b>	REGNIER FARMS 1B-19H-B268	<b>Survey Calculation Method:</b>	Minimum Curvature
<b>Wellbore:</b>	Wellbore #1		
<b>Design:</b>	Design #1 22Mar18 kjs		

Planned Survey									
Measured Depth (usft)	Inclination (°)	Azimuth (°)	Vertical Depth (usft)	+N/-S (usft)	+E/-W (usft)	Map Northing (usft)	Map Easting (usft)	Latitude	Longitude
19,200.00	90.00	180.49	7,523.00	-11,659.58	-520.50	1,279,306.143	3,127,246.735	40.099191	-105.045133
19,400.00	90.00	180.49	7,523.00	-11,859.57	-522.22	1,279,106.144	3,127,246.045	40.098642	-105.045139
19,600.00	90.00	180.49	7,523.00	-12,059.57	-523.94	1,278,906.146	3,127,245.355	40.098093	-105.045145
19,800.00	90.00	180.49	7,523.00	-12,259.56	-525.66	1,278,706.147	3,127,244.666	40.097544	-105.045152
20,000.00	90.00	180.49	7,523.00	-12,459.55	-527.38	1,278,506.148	3,127,243.976	40.096995	-105.045158
20,200.00	90.00	180.49	7,523.00	-12,659.54	-529.10	1,278,306.149	3,127,243.286	40.096446	-105.045164
20,400.00	90.00	180.49	7,523.00	-12,859.54	-530.82	1,278,106.150	3,127,242.596	40.095897	-105.045170
20,600.00	90.00	180.49	7,523.00	-13,059.53	-532.54	1,277,906.152	3,127,241.907	40.095348	-105.045176
20,800.00	90.00	180.49	7,523.00	-13,259.52	-534.26	1,277,706.153	3,127,241.217	40.094799	-105.045182
21,000.00	90.00	180.49	7,523.00	-13,459.51	-535.98	1,277,506.154	3,127,240.527	40.094250	-105.045188
21,200.00	90.00	180.49	7,523.00	-13,659.51	-537.70	1,277,306.155	3,127,239.838	40.093701	-105.045195
21,400.00	90.00	180.49	7,523.00	-13,859.50	-539.42	1,277,106.156	3,127,239.148	40.093152	-105.045201
21,600.00	90.00	180.49	7,523.00	-14,059.49	-541.14	1,276,906.158	3,127,238.458	40.092603	-105.045207
21,800.00	90.00	180.49	7,523.00	-14,259.48	-542.86	1,276,706.159	3,127,237.769	40.092054	-105.045213
22,000.00	90.00	180.49	7,523.00	-14,459.48	-544.58	1,276,506.160	3,127,237.079	40.091505	-105.045219
22,200.00	90.00	180.49	7,523.00	-14,659.47	-546.30	1,276,306.161	3,127,236.389	40.090956	-105.045225
22,400.00	90.00	180.49	7,523.00	-14,859.46	-548.02	1,276,106.162	3,127,235.700	40.090407	-105.045231
22,600.00	90.00	180.49	7,523.00	-15,059.45	-549.74	1,275,906.164	3,127,235.010	40.089858	-105.045237
22,800.00	90.00	180.49	7,523.00	-15,259.45	-551.46	1,275,706.165	3,127,234.320	40.089309	-105.045244
22,937.67	90.00	180.49	7,523.00	-15,397.11	-552.64	1,275,568.496	3,127,233.845	40.088931	-105.045248
TD at 22937.67									

Design Targets									
Target Name	Dip Angle (°)	Dip Dir. (°)	TVD (usft)	+N/-S (usft)	+E/-W (usft)	Northing (usft)	Easting (usft)	Latitude	Longitude
- hit/miss target									
- Shape									
REGNIER FARMS 1B-1'	0.00	0.00	7,523.00	-15,397.11	-552.64	1,275,568.493	3,127,233.845	40.088931	-105.045248
- plan hits target center									
- Point									
REGNIER FARMS 1B-1'	0.00	0.00	7,523.00	-415.45	-488.87	1,290,550.291	3,127,220.458	40.130058	-105.045021
- plan hits target center									
- Point									

Plan Annotations					
Measured Depth (usft)	Vertical Depth (usft)	Local Coordinates			
		+N/-S (usft)	+E/-W (usft)	Comment	
250.00	250.00	0.00	0.00	Start Build 2.00	
487.91	487.64	5.56	-8.16	Hold 4.76 Inc, 304.26 Az	
6,796.92	6,774.90	300.18	-440.68	KOP 8/100	
7,955.59	7,523.00	-415.45	-488.87	LP 90 Inc, 179.75 Az	
12,955.59	7,523.00	-5,415.40	-467.05	Begin 2/100 Turn	
12,992.72	7,523.00	-5,452.53	-467.13	Hold 180.49 Az	
22,937.67	7,523.00	-15,397.11	-552.64	TD at 22937.67	