



CRESTONE PEAK  
RESOURCES

# SECTION DETAILS

Sec	MD	Inc	Azi	TVD	+N/-S	+E/-W	Dleg	TFace	VSec	Target
1	0.00	0.00	0.00	0.00	0.00	0.00	0.00	0.00	0.00	
2	200.00	0.00	0.00	200.00	0.00	0.00	0.00	0.00	0.00	
3	800.00	12.00	270.00	795.62	0.00	-62.60	2.00	270.00	8.50	
4	1217.35	15.97	238.95	1201.08	-29.66	-155.33	2.00	-77.82	-8.29	
5	6842.38	15.97	238.95	6609.09	-827.85	-1480.95	0.00	0.00	-619.00	
6	8071.67	90.00	0.78	7406.00	-116.66	-1665.00	8.00	120.83	110.60	DW N. 3A-21H-N268 TPZ
7	18939.34	90.00	0.78	7406.00	10750.00	-1517.00	0.00	0.0010856.43		DW N. 3A TGT
8	19301.67	90.00	353.53	7406.00	11111.65	-1534.96	2.00	-90.0011217.16		
9	19784.62	90.00	353.53	7406.00	11591.52	-1589.35	0.00	0.0011699.97		DW N. 3A-21H-N268 BHL

PLAN #2  
DREAM WEAVER North 3A-21H-N268

23 KB @ 4924.00usft

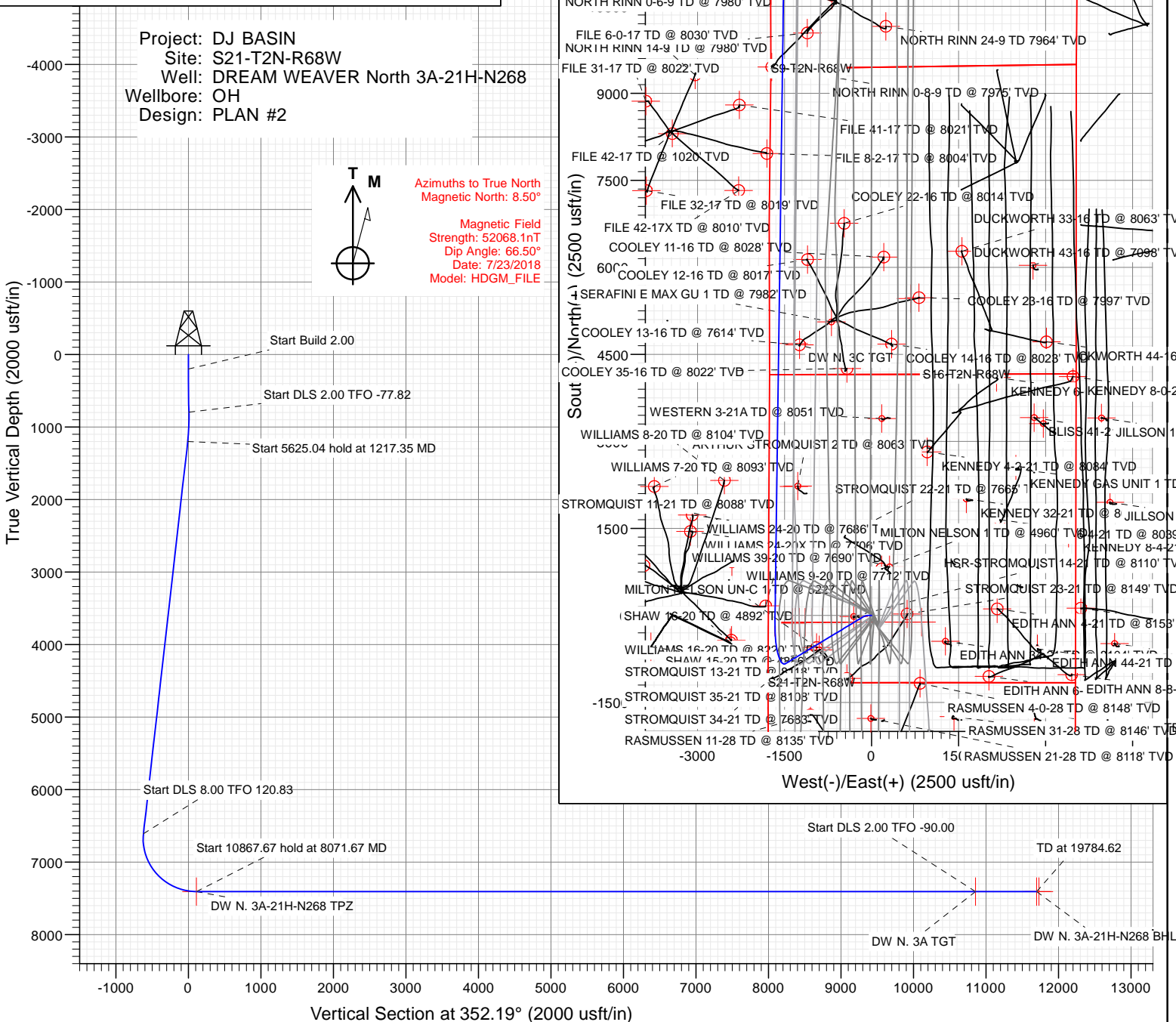
Ground Level @ 4901.00

North American Datum 1983

Well DREAM WEAVER North 3A-21H-N268 SHL, True North

Type	Target	Azimuth	Origin	N/S	E/W	From TVD
TD	No Target (Freehand)	352.19	Slot	0.00	0.00	0.00
Name		TVD	+N/-S	+E/-W	Latitude	Longitude
DW N. 3A TGT		7406.00	10750.00	-1517.00	40.149576	-105.016785
DW N. 3A-21H-N268 BHL		7406.00	11591.52	-1589.35	40.151886	-105.017044
DW N. 3A-21H-N268 BHL OLD		7406.00	11621.52	-1592.75	40.151968	-105.017056
DW N. 3A-21H-N268 TPZ		7406.00	-116.66	-1665.00	40.119745	-105.017312

Project: DJ BASIN  
Site: S21-T2N-R68W  
Well: DREAM WEAVER North 3A-21H-N268  
Wellbore: OH  
Design: PLAN #2



WELL DETAILS: DREAM WEAVER North 3A-21H-N268

+N/-S	+E/-W	Northing	Easting	Latitude	Longitude
0.00	0.00	1286960.32	3136653.10	40.120065	-105.011358

CATHEDRAL



# Cathedral Energy Services

## Planning Report

<b>Database:</b>	USA EDM 5000 Multi Users DB	<b>Local Co-ordinate Reference:</b>	Well DREAM WEAVER North 3A-21H-N268 - SI
<b>Company:</b>	Crestone Peak Resources	<b>TVD Reference:</b>	23' KB @ 4924.00usft
<b>Project:</b>	DJ BASIN	<b>MD Reference:</b>	23' KB @ 4924.00usft
<b>Site:</b>	S21-T2N-R68W	<b>North Reference:</b>	True
<b>Well:</b>	DREAM WEAVER North 3A-21H-N268	<b>Survey Calculation Method:</b>	Minimum Curvature
<b>Wellbore:</b>	OH		
<b>Design:</b>	PLAN #2		

<b>Project</b>	DJ BASIN		
<b>Map System:</b>	US State Plane 1983	<b>System Datum:</b>	Mean Sea Level
<b>Geo Datum:</b>	North American Datum 1983		
<b>Map Zone:</b>	Colorado Northern Zone		

Site		S21-T2N-R68W			
Site Position:		Northing:	1,286,960.17 usft	Latitude:	40.120065
From:	Lat/Long	Easting:	3,136,653.11 usft	Longitude:	-105.011358
Position Uncertainty:	0.00 usft	Slot Radius:	13-3/16 "	Grid Convergence:	0.32 °

Well	DREAM WEAVER North 3A-21H-N268 - Slot DREAM WEAVER North 3A-21H-N268 SHL					
Well Position	+N/-S	0.00 usft	Northing:	1,286,960.32 usft	Latitude:	40.120065
	+E/-W	0.00 usft	Easting:	3,136,653.10 usft	Longitude:	-105.011358
Position Uncertainty		0.00 usft	Wellhead Elevation:	usft	Ground Level:	4,901.00 usft

<b>Wellbore</b>	OH				
<b>Magnetics</b>	<b>Model Name</b>	<b>Sample Date</b>	<b>Declination</b>	<b>Dip Angle</b>	<b>Field Strength</b>
			(°)	(°)	(nT)
	HDGM_FILE	7/23/2018	8.50	66.50	52,068.10000000

<b>Design</b>	PLAN #2			
<b>Audit Notes:</b>				
<b>Version:</b>	<b>Phase:</b>	PLAN	<b>Tie On Depth:</b>	0.00
<b>Vertical Section:</b>	<b>Depth From (TVD)</b>	<b>+N/-S</b>	<b>+E/-W</b>	<b>Direction</b>
	(usft)	(usft)	(usft)	(°)
	0.00	0.00	0.00	352.19

<b>Plan Sections</b>										
Measured Depth (usft)	Inclination (°)	Azimuth (°)	Vertical Depth (usft)	+N/-S (usft)	+E/-W (usft)	Dogleg Rate (°/100usft)	Build Rate (°/100usft)	Turn Rate (°/100usft)	TFO (°)	Target
0.00	0.00	0.00	0.00	0.00	0.00	0.00	0.00	0.00	0.00	
200.00	0.00	0.00	200.00	0.00	0.00	0.00	0.00	0.00	0.00	
800.00	12.00	270.00	795.62	0.00	-62.60	2.00	2.00	0.00	270.00	
1,217.35	15.97	238.95	1,201.08	-29.66	-155.33	2.00	0.95	-7.44	-77.82	
6,842.38	15.97	238.95	6,609.09	-827.85	-1,480.95	0.00	0.00	0.00	0.00	
8,071.67	90.00	0.78	7,406.00	-116.66	-1,665.00	8.00	6.02	9.91	120.83	DW N. 3A-21H-N268
18,939.34	90.00	0.78	7,406.00	10,750.00	-1,517.00	0.00	0.00	0.00	0.00	DW N. 3A TGT
19,301.67	90.00	353.53	7,406.00	11,111.65	-1,534.96	2.00	0.00	-2.00	-90.00	
19,784.62	90.00	353.53	7,406.00	11,591.52	-1,589.35	0.00	0.00	0.00	0.00	DW N. 3A-21H-N268

# Cathedral Energy Services

## Planning Report

<b>Database:</b>	USA EDM 5000 Multi Users DB	<b>Local Co-ordinate Reference:</b>	Well DREAM WEAVER North 3A-21H-N268 - SI
<b>Company:</b>	Crestone Peak Resources	<b>TVD Reference:</b>	23' KB @ 4924.00usft
<b>Project:</b>	DJ BASIN	<b>MD Reference:</b>	23' KB @ 4924.00usft
<b>Site:</b>	S21-T2N-R68W	<b>North Reference:</b>	True
<b>Well:</b>	DREAM WEAVER North 3A-21H-N268	<b>Survey Calculation Method:</b>	Minimum Curvature
<b>Wellbore:</b>	OH		
<b>Design:</b>	PLAN #2		

### Planned Survey

Measured Depth (usft)	Inclination (°)	Azimuth (°)	Vertical Depth (usft)	+N/-S (usft)	+E/-W (usft)	Vertical Section (usft)	Dogleg Rate (°/100usft)	Build Rate (°/100u)	Comments / Formations
0.00	0.00	0.00	0.00	0.00	0.00	0.00	0.00	0.00	
100.00	0.00	0.00	100.00	0.00	0.00	0.00	0.00	0.00	
200.00	0.00	0.00	200.00	0.00	0.00	0.00	0.00	0.00	
300.00	2.00	270.00	299.98	0.00	-1.75	0.24	2.00	2.00	
400.00	4.00	270.00	399.84	0.00	-6.98	0.95	2.00	2.00	
500.00	6.00	270.00	499.45	0.00	-15.69	2.13	2.00	2.00	
600.00	8.00	270.00	598.70	0.00	-27.88	3.79	2.00	2.00	
700.00	10.00	270.00	697.47	0.00	-43.52	5.91	2.00	2.00	
800.00	12.00	270.00	795.62	0.00	-62.60	8.50	2.00	2.00	
900.00	12.57	260.98	893.34	-1.71	-83.75	9.69	2.00	0.57	
1,000.00	13.42	252.91	990.79	-6.82	-105.59	7.59	2.00	0.84	
1,100.00	14.49	245.89	1,087.84	-15.34	-128.10	2.20	2.00	1.07	
1,200.00	15.74	239.89	1,184.39	-27.25	-151.25	-6.45	2.00	1.25	
1,217.35	15.97	238.95	1,201.08	-29.66	-155.33	-8.29	2.00	1.34	
1,300.00	15.97	238.95	1,280.54	-41.39	-174.81	-17.26	0.00	0.00	
1,400.00	15.97	238.95	1,376.68	-55.58	-198.37	-28.12	0.00	0.00	
1,500.00	15.97	238.95	1,472.82	-69.77	-221.94	-38.98	0.00	0.00	
1,600.00	15.97	238.95	1,568.97	-83.96	-245.51	-49.83	0.00	0.00	
1,700.00	15.97	238.95	1,665.11	-98.15	-269.07	-60.69	0.00	0.00	
1,800.00	15.97	238.95	1,761.25	-112.34	-292.64	-71.55	0.00	0.00	
1,900.00	15.97	238.95	1,857.39	-126.53	-316.21	-82.40	0.00	0.00	
2,000.00	15.97	238.95	1,953.53	-140.72	-339.77	-93.26	0.00	0.00	
2,100.00	15.97	238.95	2,049.68	-154.91	-363.34	-104.12	0.00	0.00	
2,200.00	15.97	238.95	2,145.82	-169.10	-386.91	-114.98	0.00	0.00	
2,300.00	15.97	238.95	2,241.96	-183.29	-410.47	-125.83	0.00	0.00	
2,400.00	15.97	238.95	2,338.10	-197.48	-434.04	-136.69	0.00	0.00	
2,500.00	15.97	238.95	2,434.24	-211.67	-457.60	-147.55	0.00	0.00	
2,600.00	15.97	238.95	2,530.39	-225.86	-481.17	-158.40	0.00	0.00	
2,700.00	15.97	238.95	2,626.53	-240.05	-504.74	-169.26	0.00	0.00	
2,800.00	15.97	238.95	2,722.67	-254.24	-528.30	-180.12	0.00	0.00	
2,900.00	15.97	238.95	2,818.81	-268.43	-551.87	-190.98	0.00	0.00	
3,000.00	15.97	238.95	2,914.95	-282.62	-575.44	-201.83	0.00	0.00	
3,100.00	15.97	238.95	3,011.10	-296.81	-599.00	-212.69	0.00	0.00	
3,200.00	15.97	238.95	3,107.24	-311.00	-622.57	-223.55	0.00	0.00	
3,300.00	15.97	238.95	3,203.38	-325.19	-646.14	-234.40	0.00	0.00	
3,400.00	15.97	238.95	3,299.52	-339.38	-669.70	-245.26	0.00	0.00	
3,500.00	15.97	238.95	3,395.66	-353.57	-693.27	-256.12	0.00	0.00	
3,600.00	15.97	238.95	3,491.80	-367.76	-716.84	-266.97	0.00	0.00	
3,700.00	15.97	238.95	3,587.95	-381.95	-740.40	-277.83	0.00	0.00	
3,800.00	15.97	238.95	3,684.09	-396.14	-763.97	-288.69	0.00	0.00	
3,900.00	15.97	238.95	3,780.23	-410.33	-787.53	-299.55	0.00	0.00	
4,000.00	15.97	238.95	3,876.37	-424.52	-811.10	-310.40	0.00	0.00	
4,100.00	15.97	238.95	3,972.51	-438.71	-834.67	-321.26	0.00	0.00	
4,200.00	15.97	238.95	4,068.66	-452.90	-858.23	-332.12	0.00	0.00	
4,300.00	15.97	238.95	4,164.80	-467.09	-881.80	-342.97	0.00	0.00	
4,400.00	15.97	238.95	4,260.94	-481.28	-905.37	-353.83	0.00	0.00	
4,500.00	15.97	238.95	4,357.08	-495.47	-928.93	-364.69	0.00	0.00	
4,600.00	15.97	238.95	4,453.22	-509.66	-952.50	-375.55	0.00	0.00	
4,700.00	15.97	238.95	4,549.37	-523.85	-976.07	-386.40	0.00	0.00	
4,800.00	15.97	238.95	4,645.51	-538.04	-999.63	-397.26	0.00	0.00	
4,900.00	15.97	238.95	4,741.65	-552.23	-1,023.20	-408.12	0.00	0.00	
5,000.00	15.97	238.95	4,837.79	-566.42	-1,046.77	-418.97	0.00	0.00	

# Cathedral Energy Services

## Planning Report

<b>Database:</b>	USA EDM 5000 Multi Users DB	<b>Local Co-ordinate Reference:</b>	Well DREAM WEAVER North 3A-21H-N268 - SI
<b>Company:</b>	Crestone Peak Resources	<b>TVD Reference:</b>	23' KB @ 4924.00usft
<b>Project:</b>	DJ BASIN	<b>MD Reference:</b>	23' KB @ 4924.00usft
<b>Site:</b>	S21-T2N-R68W	<b>North Reference:</b>	True
<b>Well:</b>	DREAM WEAVER North 3A-21H-N268	<b>Survey Calculation Method:</b>	Minimum Curvature
<b>Wellbore:</b>	OH		
<b>Design:</b>	PLAN #2		

### Planned Survey

Measured Depth (usft)	Inclination (°)	Azimuth (°)	Vertical Depth (usft)	+N/-S (usft)	+E/-W (usft)	Vertical Section (usft)	Dogleg Rate (°/100usft)	Build Rate (°/100u)	Comments / Formations
5,100.00	15.97	238.95	4,933.93	-580.61	-1,070.33	-429.83	0.00	0.00	
5,200.00	15.97	238.95	5,030.08	-594.80	-1,093.90	-440.69	0.00	0.00	
5,300.00	15.97	238.95	5,126.22	-608.99	-1,117.46	-451.55	0.00	0.00	
5,400.00	15.97	238.95	5,222.36	-623.18	-1,141.03	-462.40	0.00	0.00	
5,500.00	15.97	238.95	5,318.50	-637.37	-1,164.60	-473.26	0.00	0.00	
5,600.00	15.97	238.95	5,414.64	-651.56	-1,188.16	-484.12	0.00	0.00	
5,700.00	15.97	238.95	5,510.79	-665.75	-1,211.73	-494.97	0.00	0.00	
5,800.00	15.97	238.95	5,606.93	-679.94	-1,235.30	-505.83	0.00	0.00	
5,900.00	15.97	238.95	5,703.07	-694.13	-1,258.86	-516.69	0.00	0.00	
6,000.00	15.97	238.95	5,799.21	-708.32	-1,282.43	-527.54	0.00	0.00	
6,100.00	15.97	238.95	5,895.35	-722.51	-1,306.00	-538.40	0.00	0.00	
6,200.00	15.97	238.95	5,991.49	-736.70	-1,329.56	-549.26	0.00	0.00	
6,300.00	15.97	238.95	6,087.64	-750.89	-1,353.13	-560.12	0.00	0.00	
6,400.00	15.97	238.95	6,183.78	-765.08	-1,376.70	-570.97	0.00	0.00	
6,500.00	15.97	238.95	6,279.92	-779.27	-1,400.26	-581.83	0.00	0.00	
6,600.00	15.97	238.95	6,376.06	-793.46	-1,423.83	-592.69	0.00	0.00	
6,700.00	15.97	238.95	6,472.20	-807.65	-1,447.39	-603.54	0.00	0.00	
6,800.00	15.97	238.95	6,568.35	-821.84	-1,470.96	-614.40	0.00	0.00	
6,842.38	15.97	238.95	6,609.09	-827.85	-1,480.95	-619.00	0.00	0.00	
6,900.00	14.15	255.34	6,664.76	-833.73	-1,494.56	-622.97	8.00	-3.15	
7,000.00	14.30	288.31	6,761.85	-832.94	-1,518.15	-618.99	8.00	0.15	
7,100.00	18.28	313.41	6,857.93	-818.26	-1,541.31	-601.30	8.00	3.98	
7,200.00	24.28	328.17	6,951.13	-789.96	-1,563.59	-570.24	8.00	6.00	
7,300.00	31.15	337.06	7,039.65	-748.61	-1,584.54	-526.42	8.00	6.87	
7,400.00	38.42	342.93	7,121.74	-695.00	-1,603.77	-470.70	8.00	7.27	
7,500.00	45.91	347.16	7,195.83	-630.18	-1,620.90	-404.15	8.00	7.48	
7,600.00	53.51	350.42	7,260.46	-555.41	-1,635.59	-328.08	8.00	7.60	
7,700.00	61.19	353.10	7,314.38	-472.14	-1,647.57	-243.95	8.00	7.68	
7,800.00	68.91	355.40	7,356.53	-382.00	-1,656.59	-153.42	8.00	7.72	
7,900.00	76.66	357.48	7,386.10	-286.74	-1,662.48	-58.25	8.00	7.75	
8,000.00	84.43	359.42	7,402.52	-188.21	-1,665.13	39.73	8.00	7.77	
8,071.67	90.00	0.78	7,406.00	-116.66	-1,665.00	110.60	8.00	7.77	
8,100.00	90.00	0.78	7,406.00	-88.33	-1,664.61	138.61	0.00	0.00	
8,200.00	90.00	0.78	7,406.00	11.66	-1,663.25	237.49	0.00	0.00	
8,300.00	90.00	0.78	7,406.00	111.65	-1,661.89	336.37	0.00	0.00	
8,400.00	90.00	0.78	7,406.00	211.64	-1,660.53	435.25	0.00	0.00	
8,500.00	90.00	0.78	7,406.00	311.63	-1,659.17	534.13	0.00	0.00	
8,600.00	90.00	0.78	7,406.00	411.62	-1,657.80	633.01	0.00	0.00	
8,700.00	90.00	0.78	7,406.00	511.61	-1,656.44	731.89	0.00	0.00	
8,800.00	90.00	0.78	7,406.00	611.60	-1,655.08	830.76	0.00	0.00	
8,900.00	90.00	0.78	7,406.00	711.59	-1,653.72	929.64	0.00	0.00	
9,000.00	90.00	0.78	7,406.00	811.59	-1,652.36	1,028.52	0.00	0.00	
9,100.00	90.00	0.78	7,406.00	911.58	-1,651.00	1,127.40	0.00	0.00	
9,200.00	90.00	0.78	7,406.00	1,011.57	-1,649.63	1,226.28	0.00	0.00	
9,300.00	90.00	0.78	7,406.00	1,111.56	-1,648.27	1,325.16	0.00	0.00	
9,400.00	90.00	0.78	7,406.00	1,211.55	-1,646.91	1,424.04	0.00	0.00	
9,500.00	90.00	0.78	7,406.00	1,311.54	-1,645.55	1,522.92	0.00	0.00	
9,600.00	90.00	0.78	7,406.00	1,411.53	-1,644.19	1,621.80	0.00	0.00	
9,700.00	90.00	0.78	7,406.00	1,511.52	-1,642.82	1,720.67	0.00	0.00	
9,800.00	90.00	0.78	7,406.00	1,611.51	-1,641.46	1,819.55	0.00	0.00	
9,900.00	90.00	0.78	7,406.00	1,711.50	-1,640.10	1,918.43	0.00	0.00	
10,000.00	90.00	0.78	7,406.00	1,811.49	-1,638.74	2,017.31	0.00	0.00	

# Cathedral Energy Services

## Planning Report

<b>Database:</b>	USA EDM 5000 Multi Users DB	<b>Local Co-ordinate Reference:</b>	Well DREAM WEAVER North 3A-21H-N268 - SI
<b>Company:</b>	Crestone Peak Resources	<b>TVD Reference:</b>	23' KB @ 4924.00usft
<b>Project:</b>	DJ BASIN	<b>MD Reference:</b>	23' KB @ 4924.00usft
<b>Site:</b>	S21-T2N-R68W	<b>North Reference:</b>	True
<b>Well:</b>	DREAM WEAVER North 3A-21H-N268	<b>Survey Calculation Method:</b>	Minimum Curvature
<b>Wellbore:</b>	OH		
<b>Design:</b>	PLAN #2		

### Planned Survey

Measured Depth (usft)	Inclination (°)	Azimuth (°)	Vertical Depth (usft)	+N/-S (usft)	+E/-W (usft)	Vertical Section (usft)	Dogleg Rate (°/100usft)	Build Rate (°/100u)	Comments / Formations
10,100.00	90.00	0.78	7,406.00	1,911.48	-1,637.38	2,116.19	0.00	0.00	
10,200.00	90.00	0.78	7,406.00	2,011.47	-1,636.02	2,215.07	0.00	0.00	
10,300.00	90.00	0.78	7,406.00	2,111.46	-1,634.65	2,313.95	0.00	0.00	
10,400.00	90.00	0.78	7,406.00	2,211.46	-1,633.29	2,412.83	0.00	0.00	
10,500.00	90.00	0.78	7,406.00	2,311.45	-1,631.93	2,511.71	0.00	0.00	
10,600.00	90.00	0.78	7,406.00	2,411.44	-1,630.57	2,610.58	0.00	0.00	
10,700.00	90.00	0.78	7,406.00	2,511.43	-1,629.21	2,709.46	0.00	0.00	
10,800.00	90.00	0.78	7,406.00	2,611.42	-1,627.84	2,808.34	0.00	0.00	
10,900.00	90.00	0.78	7,406.00	2,711.41	-1,626.48	2,907.22	0.00	0.00	
11,000.00	90.00	0.78	7,406.00	2,811.40	-1,625.12	3,006.10	0.00	0.00	
11,100.00	90.00	0.78	7,406.00	2,911.39	-1,623.76	3,104.98	0.00	0.00	
11,200.00	90.00	0.78	7,406.00	3,011.38	-1,622.40	3,203.86	0.00	0.00	
11,300.00	90.00	0.78	7,406.00	3,111.37	-1,621.04	3,302.74	0.00	0.00	
11,400.00	90.00	0.78	7,406.00	3,211.36	-1,619.67	3,401.61	0.00	0.00	
11,500.00	90.00	0.78	7,406.00	3,311.35	-1,618.31	3,500.49	0.00	0.00	
11,600.00	90.00	0.78	7,406.00	3,411.34	-1,616.95	3,599.37	0.00	0.00	
11,700.00	90.00	0.78	7,406.00	3,511.33	-1,615.59	3,698.25	0.00	0.00	
11,800.00	90.00	0.78	7,406.00	3,611.33	-1,614.23	3,797.13	0.00	0.00	
11,900.00	90.00	0.78	7,406.00	3,711.32	-1,612.86	3,896.01	0.00	0.00	
12,000.00	90.00	0.78	7,406.00	3,811.31	-1,611.50	3,994.89	0.00	0.00	
12,100.00	90.00	0.78	7,406.00	3,911.30	-1,610.14	4,093.77	0.00	0.00	
12,200.00	90.00	0.78	7,406.00	4,011.29	-1,608.78	4,192.65	0.00	0.00	
12,300.00	90.00	0.78	7,406.00	4,111.28	-1,607.42	4,291.52	0.00	0.00	
12,400.00	90.00	0.78	7,406.00	4,211.27	-1,606.06	4,390.40	0.00	0.00	
12,500.00	90.00	0.78	7,406.00	4,311.26	-1,604.69	4,489.28	0.00	0.00	
12,600.00	90.00	0.78	7,406.00	4,411.25	-1,603.33	4,588.16	0.00	0.00	
12,700.00	90.00	0.78	7,406.00	4,511.24	-1,601.97	4,687.04	0.00	0.00	
12,800.00	90.00	0.78	7,406.00	4,611.23	-1,600.61	4,785.92	0.00	0.00	
12,900.00	90.00	0.78	7,406.00	4,711.22	-1,599.25	4,884.80	0.00	0.00	
13,000.00	90.00	0.78	7,406.00	4,811.21	-1,597.88	4,983.68	0.00	0.00	
13,100.00	90.00	0.78	7,406.00	4,911.21	-1,596.52	5,082.56	0.00	0.00	
13,200.00	90.00	0.78	7,406.00	5,011.20	-1,595.16	5,181.43	0.00	0.00	
13,300.00	90.00	0.78	7,406.00	5,111.19	-1,593.80	5,280.31	0.00	0.00	
13,400.00	90.00	0.78	7,406.00	5,211.18	-1,592.44	5,379.19	0.00	0.00	
13,500.00	90.00	0.78	7,406.00	5,311.17	-1,591.07	5,478.07	0.00	0.00	
13,600.00	90.00	0.78	7,406.00	5,411.16	-1,589.71	5,576.95	0.00	0.00	
13,700.00	90.00	0.78	7,406.00	5,511.15	-1,588.35	5,675.83	0.00	0.00	
13,800.00	90.00	0.78	7,406.00	5,611.14	-1,586.99	5,774.71	0.00	0.00	
13,900.00	90.00	0.78	7,406.00	5,711.13	-1,585.63	5,873.59	0.00	0.00	
14,000.00	90.00	0.78	7,406.00	5,811.12	-1,584.27	5,972.47	0.00	0.00	
14,100.00	90.00	0.78	7,406.00	5,911.11	-1,582.90	6,071.34	0.00	0.00	
14,200.00	90.00	0.78	7,406.00	6,011.10	-1,581.54	6,170.22	0.00	0.00	
14,300.00	90.00	0.78	7,406.00	6,111.09	-1,580.18	6,269.10	0.00	0.00	
14,400.00	90.00	0.78	7,406.00	6,211.08	-1,578.82	6,367.98	0.00	0.00	
14,500.00	90.00	0.78	7,406.00	6,311.08	-1,577.46	6,466.86	0.00	0.00	
14,600.00	90.00	0.78	7,406.00	6,411.07	-1,576.09	6,565.74	0.00	0.00	
14,700.00	90.00	0.78	7,406.00	6,511.06	-1,574.73	6,664.62	0.00	0.00	
14,800.00	90.00	0.78	7,406.00	6,611.05	-1,573.37	6,763.50	0.00	0.00	
14,900.00	90.00	0.78	7,406.00	6,711.04	-1,572.01	6,862.38	0.00	0.00	
15,000.00	90.00	0.78	7,406.00	6,811.03	-1,570.65	6,961.25	0.00	0.00	
15,100.00	90.00	0.78	7,406.00	6,911.02	-1,569.29	7,060.13	0.00	0.00	
15,200.00	90.00	0.78	7,406.00	7,011.01	-1,567.92	7,159.01	0.00	0.00	

# Cathedral Energy Services

## Planning Report

<b>Database:</b>	USA EDM 5000 Multi Users DB	<b>Local Co-ordinate Reference:</b>	Well DREAM WEAVER North 3A-21H-N268 - SI
<b>Company:</b>	Crestone Peak Resources	<b>TVD Reference:</b>	23' KB @ 4924.00usft
<b>Project:</b>	DJ BASIN	<b>MD Reference:</b>	23' KB @ 4924.00usft
<b>Site:</b>	S21-T2N-R68W	<b>North Reference:</b>	True
<b>Well:</b>	DREAM WEAVER North 3A-21H-N268	<b>Survey Calculation Method:</b>	Minimum Curvature
<b>Wellbore:</b>	OH		
<b>Design:</b>	PLAN #2		

### Planned Survey

Measured Depth (usft)	Inclination (°)	Azimuth (°)	Vertical Depth (usft)	+N/-S (usft)	+E/-W (usft)	Vertical Section (usft)	Dogleg Rate (°/100usft)	Build Rate (°/100u)	Comments / Formations
15,300.00	90.00	0.78	7,406.00	7,111.00	-1,566.56	7,257.89	0.00	0.00	
15,400.00	90.00	0.78	7,406.00	7,210.99	-1,565.20	7,356.77	0.00	0.00	
15,500.00	90.00	0.78	7,406.00	7,310.98	-1,563.84	7,455.65	0.00	0.00	
15,600.00	90.00	0.78	7,406.00	7,410.97	-1,562.48	7,554.53	0.00	0.00	
15,700.00	90.00	0.78	7,406.00	7,510.96	-1,561.11	7,653.41	0.00	0.00	
15,800.00	90.00	0.78	7,406.00	7,610.95	-1,559.75	7,752.29	0.00	0.00	
15,900.00	90.00	0.78	7,406.00	7,710.95	-1,558.39	7,851.16	0.00	0.00	
16,000.00	90.00	0.78	7,406.00	7,810.94	-1,557.03	7,950.04	0.00	0.00	
16,100.00	90.00	0.78	7,406.00	7,910.93	-1,555.67	8,048.92	0.00	0.00	
16,200.00	90.00	0.78	7,406.00	8,010.92	-1,554.31	8,147.80	0.00	0.00	
16,300.00	90.00	0.78	7,406.00	8,110.91	-1,552.94	8,246.68	0.00	0.00	
16,400.00	90.00	0.78	7,406.00	8,210.90	-1,551.58	8,345.56	0.00	0.00	
16,500.00	90.00	0.78	7,406.00	8,310.89	-1,550.22	8,444.44	0.00	0.00	
16,600.00	90.00	0.78	7,406.00	8,410.88	-1,548.86	8,543.32	0.00	0.00	
16,700.00	90.00	0.78	7,406.00	8,510.87	-1,547.50	8,642.19	0.00	0.00	
16,800.00	90.00	0.78	7,406.00	8,610.86	-1,546.13	8,741.07	0.00	0.00	
16,900.00	90.00	0.78	7,406.00	8,710.85	-1,544.77	8,839.95	0.00	0.00	
17,000.00	90.00	0.78	7,406.00	8,810.84	-1,543.41	8,938.83	0.00	0.00	
17,100.00	90.00	0.78	7,406.00	8,910.83	-1,542.05	9,037.71	0.00	0.00	
17,200.00	90.00	0.78	7,406.00	9,010.82	-1,540.69	9,136.59	0.00	0.00	
17,300.00	90.00	0.78	7,406.00	9,110.82	-1,539.33	9,235.47	0.00	0.00	
17,400.00	90.00	0.78	7,406.00	9,210.81	-1,537.96	9,334.35	0.00	0.00	
17,500.00	90.00	0.78	7,406.00	9,310.80	-1,536.60	9,433.23	0.00	0.00	
17,600.00	90.00	0.78	7,406.00	9,410.79	-1,535.24	9,532.10	0.00	0.00	
17,700.00	90.00	0.78	7,406.00	9,510.78	-1,533.88	9,630.98	0.00	0.00	
17,800.00	90.00	0.78	7,406.00	9,610.77	-1,532.52	9,729.86	0.00	0.00	
17,900.00	90.00	0.78	7,406.00	9,710.76	-1,531.15	9,828.74	0.00	0.00	
18,000.00	90.00	0.78	7,406.00	9,810.75	-1,529.79	9,927.62	0.00	0.00	
18,100.00	90.00	0.78	7,406.00	9,910.74	-1,528.43	10,026.50	0.00	0.00	
18,200.00	90.00	0.78	7,406.00	10,010.73	-1,527.07	10,125.38	0.00	0.00	
18,300.00	90.00	0.78	7,406.00	10,110.72	-1,525.71	10,224.26	0.00	0.00	
18,400.00	90.00	0.78	7,406.00	10,210.71	-1,524.34	10,323.14	0.00	0.00	
18,500.00	90.00	0.78	7,406.00	10,310.70	-1,522.98	10,422.01	0.00	0.00	
18,600.00	90.00	0.78	7,406.00	10,410.70	-1,521.62	10,520.89	0.00	0.00	
18,700.00	90.00	0.78	7,406.00	10,510.69	-1,520.26	10,619.77	0.00	0.00	
18,800.00	90.00	0.78	7,406.00	10,610.68	-1,518.90	10,718.65	0.00	0.00	
18,900.00	90.00	0.78	7,406.00	10,710.67	-1,517.54	10,817.53	0.00	0.00	
18,939.34	90.00	0.78	7,406.00	10,750.00	-1,517.00	10,856.43	0.00	0.00	
19,000.00	90.00	359.57	7,406.00	10,810.66	-1,516.82	10,916.50	2.00	0.00	
19,100.00	90.00	357.57	7,406.00	10,910.63	-1,519.32	11,015.88	2.00	0.00	
19,200.00	90.00	355.57	7,406.00	11,010.44	-1,525.30	11,115.58	2.00	0.00	
19,300.00	90.00	353.57	7,406.00	11,109.99	-1,534.77	11,215.49	2.00	0.00	
19,301.67	90.00	353.53	7,406.00	11,111.65	-1,534.96	11,217.16	2.00	0.00	
19,400.00	90.00	353.53	7,406.00	11,209.35	-1,546.03	11,315.46	0.00	0.00	
19,500.00	90.00	353.53	7,406.00	11,308.71	-1,557.30	11,415.43	0.00	0.00	
19,600.00	90.00	353.53	7,406.00	11,408.08	-1,568.56	11,515.41	0.00	0.00	
19,700.00	90.00	353.53	7,406.00	11,507.44	-1,579.82	11,615.38	0.00	0.00	
19,784.62	90.00	353.53	7,406.00	11,591.52	-1,589.35	11,699.97	0.00	0.00	

# Cathedral Energy Services

## Planning Report

<b>Database:</b>	USA EDM 5000 Multi Users DB	<b>Local Co-ordinate Reference:</b>	Well DREAM WEAVER North 3A-21H-N268 - SI
<b>Company:</b>	Crestone Peak Resources	<b>TVD Reference:</b>	23' KB @ 4924.00usft
<b>Project:</b>	DJ BASIN	<b>MD Reference:</b>	23' KB @ 4924.00usft
<b>Site:</b>	S21-T2N-R68W	<b>North Reference:</b>	True
<b>Well:</b>	DREAM WEAVER North 3A-21H-N268	<b>Survey Calculation Method:</b>	Minimum Curvature
<b>Wellbore:</b>	OH		
<b>Design:</b>	PLAN #2		

Targets									
Target Name									
- hit/miss target	Dip Angle	Dip Dir.	TVD	+N/-S	+E/-W	Northing	Easting	Latitude	Longitude
- Shape	(°)	(°)	(usft)	(usft)	(usft)	(usft)	(usft)		
DW N. 3A-21H-N268 TP - plan hits target center - Point	0.00	0.00	7,406.00	-116.66	-1,665.00	1,286,834.49	3,134,988.77	40.119745	-105.017312
DW N. 3A-21H-N268 BH - plan misses target center by 30.19usft at 19784.62usft MD (7406.00 TVD, 11591.52 N, -1589.35 E) - Point	0.00	0.00	7,406.00	11,621.52	-1,592.75	1,298,572.89	3,134,996.33	40.151968	-105.017056
DW N. 3A TGT - plan hits target center - Point	0.00	0.00	7,406.00	10,750.00	-1,517.00	1,297,701.80	3,135,076.88	40.149576	-105.016785
DW N. 3A-21H-N268 BH - plan hits target center - Point	0.00	0.00	7,406.00	11,591.52	-1,589.35	1,298,542.91	3,134,999.90	40.151886	-105.017044