

# **Crestone Peak Resources**

**DJ BASIN**

**S21-T2N-R68W**

**DREAM WEAVER North 3G-21H-N268**

**OH**

**PLAN #1**

## **Anticollision Summary Report**

**23 May, 2018**

# Cathedral Energy Services

## Anticollision Summary Report

<b>Company:</b>	Crestone Peak Resources	<b>Local Co-ordinate Reference:</b>	Well DREAM WEAVER North 3G-21H-N268 - Slot DREAM WEAVER North 3G-21H-N268 SHL
<b>Project:</b>	DJ BASIN	<b>TVD Reference:</b>	23' KB @ 4924.00usft (Original Well Elev)
<b>Reference Site:</b>	S21-T2N-R68W	<b>MD Reference:</b>	23' KB @ 4924.00usft (Original Well Elev)
<b>Site Error:</b>	0.00 usft	<b>North Reference:</b>	True
<b>Reference Well:</b>	DREAM WEAVER North 3G-21H-N268	<b>Survey Calculation Method:</b>	Minimum Curvature
<b>Well Error:</b>	0.00 usft	<b>Output errors are at</b>	2.00 sigma
<b>Reference Wellbore</b>	OH	<b>Database:</b>	USA EDM 5000 Multi Users DB
<b>Reference Design:</b>	PLAN #1	<b>Offset TVD Reference:</b>	Offset Datum

<b>Reference</b>	PLAN #1		
<b>Filter type:</b>	NO GLOBAL FILTER: Using user defined selection & filtering criteria		
<b>Interpolation Method:</b>	MD Interval 100.00usft	<b>Error Model:</b>	ISCWSA
<b>Depth Range:</b>	Unlimited	<b>Scan Method:</b>	Closest Approach 3D
<b>Results Limited by:</b>	Maximum center-center distance of 1,933.21 usft	<b>Error Surface:</b>	Pedal Curve
<b>Warning Levels Evaluated at:</b>	2.00 Sigma	<b>Casing Method:</b>	Not applied

<b>Survey Tool Program</b>	<b>Date</b>	5/23/2018		
<b>From (usft)</b>	<b>To (usft)</b>	<b>Survey (Wellbore)</b>	<b>Tool Name</b>	<b>Description</b>
0.00	2,000.00	PLAN #1 (OH)	VESSI_GYROFLEX	VESSI Gyroflex Gyro
2,001.00	19,625.69	PLAN #1 (OH)	MWD+HDGM	OWSG MWD + HDGM

Summary						
Site Name	Reference Measured Depth (usft)	Offset Measured Depth (usft)	Distance Between Centres (usft)	Distance Between Ellipses (usft)	Separation Factor	Warning
S21-T2N-R68W						
DREAM WEAVER North 3A-21H-N268 - OH - PLAN #1	200.00	200.00	72.86	72.37	148.590	CC, ES
DREAM WEAVER North 3A-21H-N268 - OH - PLAN #1	19,100.00	19,200.00	1,204.28	836.15	3.271	SF
DREAM WEAVER North 3B-21H-N268 - OH - PLAN #3	408.73	408.76	60.68	59.45	49.480	CC
DREAM WEAVER North 3B-21H-N268 - OH - PLAN #3	500.00	499.82	60.88	59.33	39.389	ES
DREAM WEAVER North 3B-21H-N268 - OH - PLAN #3	19,626.62	19,884.15	944.54	561.04	2.463	SF
DREAM WEAVER North 3C-21H-N268 - OH - PLAN #2	545.75	545.82	48.43	46.72	28.340	CC
DREAM WEAVER North 3C-21H-N268 - OH - PLAN #2	600.00	599.93	48.54	46.64	25.580	ES
DREAM WEAVER North 3C-21H-N268 - OH - PLAN #2	19,626.62	19,630.38	958.73	571.09	2.473	SF
DREAM WEAVER North 3D-21H-N268 - OH - PLAN #1	714.54	714.74	35.53	33.23	15.456	CC, ES
DREAM WEAVER North 3D-21H-N268 - OH - PLAN #1	19,500.00	19,554.94	535.55	152.67	1.399	Level 3, SF
DREAM WEAVER North 3E-21H-N268 - OH - PLAN #1	810.14	810.35	22.91	20.28	8.707	CC
DREAM WEAVER North 3E-21H-N268 - OH - PLAN #1	18,700.00	18,640.52	228.24	-108.07	0.679	Level 1, ES, SF
DREAM WEAVER North 3F-21H-N268 - OH - PLAN #1	842.43	842.56	11.41	8.66	4.154	CC
DREAM WEAVER North 3F-21H-N268 - OH - PLAN #1	19,000.00	19,155.16	247.56	-74.90	0.768	Level 1, SF
DREAM WEAVER North 3F-21H-N268 - OH - PLAN #1	19,626.62	19,779.15	267.71	-79.23	0.772	Level 1, ES
DREAM WEAVER North 3F-21H-N268 - OH - PLAN #1	999.93	999.63	10.15	6.86	3.086	CC
DREAM WEAVER North 3H-21H-N268 - OH - PLAN #1	19,626.62	19,524.94	352.66	-25.90	0.932	Level 1, ES, SF
DREAM WEAVER North 3I-21H-N268 - OH - PLAN #1	200.00	200.00	24.29	23.80	49.529	CC, ES
DREAM WEAVER North 3I-21H-N268 - OH - PLAN #1	19,626.62	19,633.61	679.87	289.99	1.744	SF
DREAM WEAVER North 3J-21H-N268 - OH - PLAN #1	200.00	200.00	36.43	35.94	74.293	CC, ES
DREAM WEAVER North 3J-21H-N268 - OH - PLAN #1	19,626.62	19,756.81	979.22	593.23	2.537	SF
DREAM WEAVER North 3K-21H-N268 - OH - PLAN #1	200.00	200.00	48.57	48.08	99.058	CC, ES
DREAM WEAVER North 3K-21H-N268 - OH - PLAN #1	19,626.62	19,535.65	1,063.72	675.57	2.740	SF
DREAM WEAVER South 3A-21H-N268 - OH - PLAN #1	609.89	614.45	22.98	21.02	11.703	CC, ES, SF
DREAM WEAVER South 3B-21H-N268 - OH - PLAN #2	680.78	686.98	26.21	23.98	11.773	CC, ES
DREAM WEAVER South 3B-21H-N268 - OH - PLAN #2	700.00	705.94	26.46	24.16	11.505	SF
DREAM WEAVER South 3C-21H-N268 - OH - PLAN #1	791.03	798.61	39.46	36.84	15.054	CC
DREAM WEAVER South 3C-21H-N268 - OH - PLAN #1	800.00	807.55	39.48	36.83	14.873	ES
DREAM WEAVER South 3C-21H-N268 - OH - PLAN #1	900.00	907.04	43.99	40.96	14.535	SF
DREAM WEAVER South 3D-21H-N268 - OH - PLAN #1	918.11	926.43	32.64	29.59	10.681	CC, ES, SF
DREAM WEAVER South 3E-21H-N268 - OH - PLAN #1	1,284.77	1,309.20	47.47	43.13	10.944	CC, ES
DREAM WEAVER South 3E-21H-N268 - OH - PLAN #1	7,549.56	8,106.99	260.02	215.59	5.853	SF
DREAM WEAVER South 3F-21H-N268 - OH - PLAN #1	1,107.72	1,115.72	40.88	37.18	11.039	CC, ES
DREAM WEAVER South 3F-21H-N268 - OH - PLAN #1	8,305.50	7,550.58	110.46	64.63	2.410	SF

CC - Min centre to center distance or convergent point, SF - min separation factor, ES - min ellipse separation

# Cathedral Energy Services

## Anticollision Summary Report

<b>Company:</b>	Crestone Peak Resources	<b>Local Co-ordinate Reference:</b>	Well DREAM WEAVER North 3G-21H-N268 - Slot DREAM WEAVER North 3G-21H-N268 SHL
<b>Project:</b>	DJ BASIN	<b>TVD Reference:</b>	23' KB @ 4924.00usft (Original Well Elev)
<b>Reference Site:</b>	S21-T2N-R68W	<b>MD Reference:</b>	23' KB @ 4924.00usft (Original Well Elev)
<b>Site Error:</b>	0.00 usft	<b>North Reference:</b>	True
<b>Reference Well:</b>	DREAM WEAVER North 3G-21H-N268	<b>Survey Calculation Method:</b>	Minimum Curvature
<b>Well Error:</b>	0.00 usft	<b>Output errors are at</b>	2.00 sigma
<b>Reference Wellbore</b>	OH	<b>Database:</b>	USA EDM 5000 Multi Users DB
<b>Reference Design:</b>	PLAN #1	<b>Offset TVD Reference:</b>	Offset Datum

Summary						
Site Name Offset Well - Wellbore - Design	Reference Measured Depth (usft)	Offset Measured Depth (usft)	Distance Between Centres (usft)	Distance Between Ellipses (usft)	Separation Factor	Warning
S21-T2N-R68W						
DREAM WEAVER South 3G-21H-N268 - OH - PLAN #1	1,323.97	1,328.77	62.18	57.73	13.996	CC
DREAM WEAVER South 3G-21H-N268 - OH - PLAN #1	7,908.78	7,836.08	80.07	36.34	1.831	ES, SF
DREAM WEAVER South 3H-21H-N268 - OH - PLAN #1	1,245.59	1,250.22	91.77	87.60	22.013	CC, ES
DREAM WEAVER South 3H-21H-N268 - OH - PLAN #1	7,452.12	8,173.62	390.18	345.62	8.755	SF
DREAM WEAVER South 3I-21H-N268 - OH - PLAN #2	1,137.88	1,141.40	126.60	122.80	33.371	CC, ES
DREAM WEAVER South 3I-21H-N268 - OH - PLAN #2	8,300.00	7,473.36	750.61	705.57	16.665	SF
DREAM WEAVER South 3J-21H-N268 - OH - PLAN #2	1,045.80	1,049.02	148.89	145.41	42.842	CC, ES
DREAM WEAVER South 3J-21H-N268 - OH - PLAN #2	8,600.00	7,336.37	926.66	878.73	19.332	SF
DREAM WEAVER South 3K-21H-N268 - OH - PLAN #2	875.41	879.13	169.47	166.59	58.692	CC
DREAM WEAVER South 3K-21H-N268 - OH - PLAN #2	900.00	903.26	169.51	166.54	57.003	ES
DREAM WEAVER South 3K-21H-N268 - OH - PLAN #2	8,600.00	7,192.69	1,137.93	1,091.38	24.444	SF

# Cathedral Energy Services

## Anticollision Summary Report

<b>Company:</b>	Crestone Peak Resources	<b>Local Co-ordinate Reference:</b>	Well DREAM WEAVER North 3G-21H-N268 - Slot DREAM WEAVER North 3G-21H-N268 SHL
<b>Project:</b>	DJ BASIN	<b>TVD Reference:</b>	23' KB @ 4924.00usft (Original Well Elev)
<b>Reference Site:</b>	S21-T2N-R68W	<b>MD Reference:</b>	23' KB @ 4924.00usft (Original Well Elev)
<b>Site Error:</b>	0.00 usft	<b>North Reference:</b>	True
<b>Reference Well:</b>	DREAM WEAVER North 3G-21H-N268	<b>Survey Calculation Method:</b>	Minimum Curvature
<b>Well Error:</b>	0.00 usft	<b>Output errors are at</b>	2.00 sigma
<b>Reference Wellbore</b>	OH	<b>Database:</b>	USA EDM 5000 Multi Users DB
<b>Reference Design:</b>	PLAN #1	<b>Offset TVD Reference:</b>	Offset Datum

Summary						
Site Name Offset Well - Wellbore - Design	Reference Measured Depth (usft)	Offset Measured Depth (usft)	Distance Between Centres (usft)	Distance Between Ellipses (usft)	Separation Factor	Warning
S21-T2N-R68W (OFFSETS)						
ARTHUR STROMQUIST 2 - KMG WELL - GYRO	10,210.28	7,379.96	992.00	930.28	16.073	CC, ES
ARTHUR STROMQUIST 2 - KMG WELL - GYRO	10,400.00	7,385.20	1,009.97	946.07	15.806	SF
BLISS 41-21 - KPK WELL - SURVEYS						Out of range
BOULDER CREEK 9-4K8 - SNYDER OIL - NO SURVEY						Out of range
BROWN C UNIT 1 - CPR WELL - GYRO						Out of range
CANINO 1 - HUGHES C W-SOTEXCO 1 - NO SURVEY						Out of range
CHAMPLIN 41-4/1-68/ 1 - KMG WELL - NO SURVEYS						Out of range
CHAMPLIN 86 AMOCO B 2 - KPK WELL - NO SURVEY						Out of range
CHAMPLIN 86 AMOCO UT/Q 1 - KMG WELL - GYRO						Out of range
CHAMPLIN 86 AMOCO-B 1 - KPK WELL - NO SURVEY						Out of range
CHAMPLIN 86 AMOCO-B 3 - KPK WELL - NO SURVEY						Out of range
CHAMPLIN 86 AMOCO-B 4 - KPK WELL - NO SURVEY						Out of range
CHAMPLIN 86 AMOCO-B 5 - KPK WELL - NO SURVEY						Out of range
CHAMPLIN 86 AMOCO-B 6 - KPK WELL - NO SURVEY						Out of range
CHAMPLIN 86 AMOCO-F 5 - KPK WELL - NO SURVEY						Out of range
CHAMPLIN 86 AMOCO-O 9 - KMG WELL - GYRO						Out of range
CHAMPLIN32-4/1-68/ 2 - KMG WELL - NO SURVEYS						Out of range
CHMPLN 86 AMOCO-F 1 - KPK WELL - NO SURVEYS						Out of range
COLCLASURE 42-21 - KPK WELL - NO SURVEYS						Out of range
COOLEY 11-16 - KMG WELL - SURVEYS	14,159.00	7,606.14	509.63	376.17	3.819	CC, ES
COOLEY 11-16 - KMG WELL - SURVEYS	14,200.00	7,607.40	511.28	376.89	3.804	SF
COOLEY 12-16 - KMG WELL - SURVEYS	14,125.50	7,557.35	806.27	674.26	6.107	CC, ES
COOLEY 12-16 - KMG WELL - SURVEYS	14,200.00	7,557.86	809.71	676.33	6.071	SF
COOLEY 13-16 - KMG WELL - SURVEYS	12,657.46	7,469.98	951.45	847.97	9.194	CC, ES
COOLEY 13-16 - KMG WELL - SURVEYS	12,700.00	7,470.25	952.40	848.47	9.164	SF
COOLEY 14-16 - KMG WELL - SURVEYS	12,673.41	7,536.48	626.20	521.87	6.002	CC, ES, SF
COOLEY 22-16 - KMG WELL - SURVEYS	14,745.33	7,627.30	172.75	22.66	1.151	Level 2, CC, ES, SF
COOLEY 23-16 - KMG WELL - SURVEYS	13,461.44	7,593.09	1,109.19	992.05	9.469	CC
COOLEY 23-16 - KMG WELL - SURVEYS	13,500.00	7,592.89	1,109.86	991.96	9.413	ES
COOLEY 23-16 - KMG WELL - SURVEYS	13,600.00	7,592.36	1,117.81	998.32	9.355	SF
COOLEY 35-16 - KMG WELL - SURVEYS	12,237.10	7,481.35	140.30	39.66	1.394	Level 3, CC, ES, SF
COPPER 31-15 - KMG WELL - SURVEYS						Out of range
CPC 31-4 (1-68) 3 - ANADARKO WELL - NO SURVEYS						Out of range
CPC 42-4 (1-68) 4 - ANADARKO WELL - NO SURVEYS						Out of range
DOMENICO 1 - NOBLE WELL - GYRO						Out of range
DUCKWORTH 31-16 - CPR WELL - GYRO	16,788.12	7,579.87	1,866.40	1,701.68	11.331	CC
DUCKWORTH 31-16 - CPR WELL - GYRO	16,800.00	7,580.21	1,866.44	1,701.56	11.320	ES
DUCKWORTH 31-16 - CPR WELL - GYRO	16,900.00	7,583.08	1,869.75	1,703.74	11.263	SF
DUCKWORTH 32-16 - CPR WELL - SURVEYS	15,316.86	7,517.78	1,853.92	1,708.46	12.745	CC, ES
DUCKWORTH 32-16 - CPR WELL - SURVEYS	15,500.00	7,519.02	1,862.94	1,714.81	12.577	SF
DUCKWORTH 33-16 - CPR WELL - SURVEYS	14,256.77	7,561.27	1,855.11	1,714.49	13.193	CC, ES
DUCKWORTH 33-16 - CPR WELL - SURVEYS	14,400.00	7,561.14	1,860.63	1,718.72	13.111	SF
DUCKWORTH 41-16 - CPR WELL - SURVEYS						Out of range
DUCKWORTH 43-16 - CPR WELL - GYRO						Out of range
DUCKWORTH 44-16 - CPR WELL - SURVEYS						Out of range
DUCKWORTH 6-0-16 - CPR WELL - SURVEYS						Out of range
DUCKWORTH B UNIT 1 - CPR WELL - GYRO						Out of range
DUCKWORTH B UNIT 2 - CPR WELL - GYRO						Out of range
EAST RINN 0-4-15 - CPR WELL - SURVEYS						Out of range
EAST RINN 13-15 - CPR WELL - SURVEYS						Out of range
EDITH ANN 1 - CPR WELL - GYRO						Out of range

CC - Min centre to center distance or convergent point, SF - min separation factor, ES - min ellipse separation

# Cathedral Energy Services

## Anticollision Summary Report

<b>Company:</b>	Crestone Peak Resources	<b>Local Co-ordinate Reference:</b>	Well DREAM WEAVER North 3G-21H-N268 - Slot DREAM WEAVER North 3G-21H-N268 SHL
<b>Project:</b>	DJ BASIN	<b>TVD Reference:</b>	23' KB @ 4924.00usft (Original Well Elev)
<b>Reference Site:</b>	S21-T2N-R68W	<b>MD Reference:</b>	23' KB @ 4924.00usft (Original Well Elev)
<b>Site Error:</b>	0.00 usft	<b>North Reference:</b>	True
<b>Reference Well:</b>	DREAM WEAVER North 3G-21H-N268	<b>Survey Calculation Method:</b>	Minimum Curvature
<b>Well Error:</b>	0.00 usft	<b>Output errors are at</b>	2.00 sigma
<b>Reference Wellbore</b>	OH	<b>Database:</b>	USA EDM 5000 Multi Users DB
<b>Reference Design:</b>	PLAN #1	<b>Offset TVD Reference:</b>	Offset Datum

Summary						
Site Name Offset Well - Wellbore - Design	Reference Measured Depth (usft)	Offset Measured Depth (usft)	Distance Between Centres (usft)	Distance Between Ellipses (usft)	Separation Factor	Warning
S21-T2N-R68W (OFFSETS)						
EDITH ANN 33-21 - CPR WELL - GYRO	8,913.34	7,407.71	1,658.29	1,613.86	37.326	CC, ES
EDITH ANN 33-21 - CPR WELL - GYRO	9,400.00	7,410.05	1,728.23	1,679.04	35.137	SF
EDITH ANN 34-21 - CPR WELL - GYRO	2,543.93	2,557.51	1,378.01	1,369.52	162.278	CC
EDITH ANN 34-21 - CPR WELL - GYRO	2,600.00	2,611.01	1,378.07	1,369.37	158.284	ES
EDITH ANN 34-21 - CPR WELL - GYRO	7,800.00	7,391.81	1,558.21	1,523.40	44.763	SF
EDITH ANN 4-21 - CPR WELL - SURVEYS						Out of range
EDITH ANN 44-21 - CPR WELL - GYRO						Out of range
EDITH ANN 6-8-21 - CPR WELL - SURVEYS						Out of range
EDITH ANN 8-8-21 - CPR WELL - SURVEYS						Out of range
EDITH ANN-DUCKWORTH 4A-21H-O268 - CPR - FINAL	8,171.63	8,362.00	1,237.04	1,188.89	25.696	CC
EDITH ANN-DUCKWORTH 4A-21H-O268 - CPR - FINAL	16,932.75	17,130.00	1,307.36	981.48	4.012	ES, SF
EDITH ANN-DUCKWORTH 4B-21H-O268 - CPR - FINAL	9,316.27	9,609.57	1,558.03	1,479.02	19.720	CC
EDITH ANN-DUCKWORTH 4B-21H-O268 - CPR - FINAL	16,941.76	17,237.97	1,652.66	1,325.35	5.049	ES, SF
EDITH ANN-DUCKWORTH 4C-21H-O268 - CPR - FINA						Out of range
EDITH ANN-DUCKWORTH 4D-21H-O268 - CPR - FINA						Out of range
EDITH ANN-DUCKWORTH 4E-21H-O268 - CPR - FINAL						Out of range
EDITH ANN-DUCKWORTH 4F-21H-O268 - CPR - FINAL						Out of range
EDITH ANN-DUCKWORTH 4G-21H-O268 - CPR - FINA						Out of range
EDITH ANN-DUCKWORTH 4H-21H-O268 - CPR - FINA						Out of range
ERIE CORP 42-4 - KMG WELL - NO SURVEYS						Out of range
EVERIST 12-10 - KMG WELL - SURVEYS						Out of range
EVERIST 12-10X - KMG WELL - NO SURVEYS						Out of range
EVERIST 13-10 - KMG WELL - SURVEYS						Out of range
EVERIST 33-10 - KMG WELL - SURVEYS						Out of range
FAIRVIEW 1 - EXTRACTION WELL - NO SURVEYS						Out of range
FAIRVIEW 3 - EXTRACTION O&G LLC - SURVEYS						Out of range
FAIRVIEW 4 - EXTRACTION O&G LLC - SURVEYS						Out of range
FAIRVIEW 5 - EXTRACTION O&G LLC - SURVEYS						Out of range
FILE 1-17 - CPR WELL - SURVEYS						Out of range
FILE 31-17 - CPR WELL - SURVEYS						Out of range
FILE 32-17 - CPR WELL - SURVEYS						Out of range
FILE 41-17 - CPR WELL - SURVEYS						Out of range
FILE 42-17 - CPR WELL - NO SURVEYS						Out of range
FILE 4-2-17 - CPR WELL - SURVEYS						Out of range
FILE 42-17X - CPR WELL - SURVEYS						Out of range
FILE 6-0-17 - CPR WELL - SURVEYS						Out of range
FILE 8-2-17 - CPR WELL - SURVEYS	15,965.25	7,703.59	1,507.70	1,349.96	9.558	CC
FILE 8-2-17 - CPR WELL - SURVEYS	16,000.00	7,703.42	1,508.10	1,349.66	9.519	ES
FILE 8-2-17 - CPR WELL - SURVEYS	16,200.00	7,702.43	1,525.87	1,364.42	9.452	SF
FREDERICKS 13-27 - KMG WELL - NO SURVEYS						Out of range
FREDERICKS 13-27X - KMG WELL - SURVEYS						Out of range
GARVER U 34-5JI - KMG WELL - NO SURVEYS						Out of range
HINGLEY 1 - KPK WELL - NO SURVEYS						Out of range
HINGLEY 2 - KPK WELL - NO SUREYS						Out of range
HSR-STROMQUIST 14-21 - KMG WELL - GYRO	7,966.51	7,397.71	45.47	9.80	1.275	Level 3, CC, ES, SF
JACK A MLEYNEK 2 - KPK WELL - NO SURVEYS						Out of range
JACK MLEYNEK 1 - KPK WELL - NO SURVEYS						Out of range
JACK MLEYNEK 3 - KPK WELL - NO SURVEYS						Out of range
JACK MLEYNEK 4 - KPK WELL - NO SURVEYS						Out of range
JACK MLEYNEK 5 - KPK WELL - NO SURVEYS						Out of range
JILLSON 0-6-22 - CPR WELL - SURVEYS						Out of range

CC - Min centre to center distance or convergent point, SF - min separation factor, ES - min ellipse separation

# Cathedral Energy Services

## Anticollision Summary Report

<b>Company:</b>	Crestone Peak Resources	<b>Local Co-ordinate Reference:</b>	Well DREAM WEAVER North 3G-21H-N268 - Slot DREAM WEAVER North 3G-21H-N268 SHL
<b>Project:</b>	DJ BASIN	<b>TVD Reference:</b>	23' KB @ 4924.00usft (Original Well Elev)
<b>Reference Site:</b>	S21-T2N-R68W	<b>MD Reference:</b>	23' KB @ 4924.00usft (Original Well Elev)
<b>Site Error:</b>	0.00 usft	<b>North Reference:</b>	True
<b>Reference Well:</b>	DREAM WEAVER North 3G-21H-N268	<b>Survey Calculation Method:</b>	Minimum Curvature
<b>Well Error:</b>	0.00 usft	<b>Output errors are at</b>	2.00 sigma
<b>Reference Wellbore</b>	OH	<b>Database:</b>	USA EDM 5000 Multi Users DB
<b>Reference Design:</b>	PLAN #1	<b>Offset TVD Reference:</b>	Offset Datum

Summary						
Site Name	Reference Measured Depth (usft)	Offset Measured Depth (usft)	Distance Between Centres (usft)	Distance Between Ellipses (usft)	Separation Factor	Warning
S21-T2N-R68W (OFFSETS)						
JILLSON 1 - KPK WELL - NO SURVEYS						Out of range
JILLSON 11-22 - CPR WELL - GYRO						Out of range
JILLSON 12-22 - CPR WELL - GYRO						Out of range
JILLSON 14-22 - CPR WELL - GYRO						Out of range
JILLSON 3 - KPK WELL - NO SURVEYS						Out of range
JILLSON 5 - KPK WELL - NO SURVEYS						Out of range
JILLSON A 1 - KPK WELL - NO SURVEYS	800.00	775.99	1,525.21	1,522.56	576.561	CC
JILLSON A 1 - KPK WELL - NO SURVEYS	1,000.00	975.83	1,525.61	1,522.27	456.278	ES
JILLSON A 1 - KPK WELL - NO SURVEYS	5,500.00	5,430.67	1,687.20	1,663.11	70.051	SF
JILLSON A 2 - KPK WELL - NO SURVEYS	800.00	775.99	1,722.06	1,719.41	649.768	CC, ES
JILLSON A 2 - KPK WELL - NO SURVEYS	2,800.00	2,758.31	1,925.19	1,915.81	205.202	SF
JILLSON A 3 - KPK WELL - NO SURVEYS						Out of range
JILLSON A 4 - KPK WELL - NO SURVEYS						Out of range
JILLSON-EAST RINN 3A-22H-M268 - CPR WELL - SUR						Out of range
JILLSON-EAST RINN 3B-22H-M268 - CPR WELL - SUR						Out of range
JILLSON-EAST RINN 3C-22H-M268 - CPR WELL - SUR						Out of range
KENNEDY 1 - MACEY & MERSHON WELL - NO SURVEYS						Out of range
KENNEDY 31-21 - CPR WELL - GYRO	11,470.69	7,430.53	1,694.00	1,613.48	21.038	CC
KENNEDY 31-21 - CPR WELL - GYRO	11,500.00	7,430.56	1,694.25	1,613.33	20.935	ES
KENNEDY 31-21 - CPR WELL - GYRO	11,700.00	7,430.83	1,709.45	1,626.25	20.547	SF
KENNEDY 32-21 - CPR WELL - GYRO	9,974.93	7,409.36	1,915.95	1,857.51	32.785	CC
KENNEDY 32-21 - CPR WELL - GYRO	10,000.00	7,409.66	1,916.12	1,857.34	32.602	ES
KENNEDY 32-21 - CPR WELL - GYRO	10,200.00	7,412.05	1,929.13	1,867.91	31.515	SF
KENNEDY 41-21 - CPR WELL - GYRO						Out of range
KENNEDY 4-2-21 - CPR WELL - SURVEYS	10,796.51	7,462.90	1,244.03	1,167.28	16.210	CC
KENNEDY 4-2-21 - CPR WELL - SURVEYS	10,800.00	7,462.91	1,244.03	1,167.23	16.197	ES
KENNEDY 4-2-21 - CPR WELL - SURVEYS	11,000.00	7,463.01	1,260.56	1,181.08	15.859	SF
KENNEDY 6-0-21 - CPR WELL - SURVEYS						Out of range
KENNEDY 6-4-21 - CPR WELL - SURVEYS						Out of range
KENNEDY 8-0-21 - CPR WELL - SURVEYS						Out of range
KENNEDY GAS UNIT 1 - CPR WELL - GYRO						Out of range
LONGMONT 8-10K - TOP OPERATING WELL - NO SURVEYS						Out of range
LONGMONT FARMS 1 - KPK WELL - NO SURVEYS						Out of range
LONGMONT FARMS 3 - KPK WELL - NO SURVEYS						Out of range
MAX SERAFINI 1 - KPK WELL - NO SURVEYS						Out of range
MAX SERAFINI C 1 - KPK WELL - NO SURVEYS						Out of range
MILES 1 - KPK WELL - NO SURVEYS						Out of range
MILES 33-3M - KMG WELL - GYRO						Out of range
MILES 4 - KPK WELL - NO SURVEYS						Out of range
MILES 5 - KPK WELL - NO SURVEYS						Out of range
MILES JOSEPHINE 1 - KPK WELL - NO SURVEYS						Out of range
MILES JOSEPHINE 2 - KPK WELL - NO SURVEYS						Out of range
MILES JOSEPHINE B 1 - KPK WELL - NO SURVEYS						Out of range
MILLER 12-27 - CPR WELL - GYRO						Out of range
MILTON NELSON 1 - KPK WELL - NO SURVEYS	800.00	781.00	875.33	872.39	297.388	CC, ES
MILTON NELSON 1 - KPK WELL - NO SURVEYS	5,200.00	4,960.00	1,479.44	1,456.09	63.342	SF
MILTON NELSON UN-C 1 - KPK WELL - NO SURVEYS	5,308.65	5,227.00	790.85	765.06	30.676	CC, ES
MILTON NELSON UN-C 1 - KPK WELL - NO SURVEYS	5,400.00	5,227.00	796.10	769.71	30.165	SF
MILTON NELSON UNIT 1 - KPK WELL - NO SURVEYS	3,741.95	3,701.38	305.21	289.10	18.946	CC
MILTON NELSON UNIT 1 - KPK WELL - NO SURVEYS	3,800.00	3,756.08	305.33	288.88	18.560	ES
MILTON NELSON UNIT 1 - KPK WELL - NO SURVEYS	5,000.00	4,943.80	354.12	330.60	15.059	SF

CC - Min centre to center distance or convergent point, SF - min separation factor, ES - min ellipse separation



# Cathedral Energy Services

## Anticollision Summary Report

<b>Company:</b>	Crestone Peak Resources	<b>Local Co-ordinate Reference:</b>	Well DREAM WEAVER North 3G-21H-N268 - Slot DREAM WEAVER North 3G-21H-N268 SHL
<b>Project:</b>	DJ BASIN	<b>TVD Reference:</b>	23' KB @ 4924.00usft (Original Well Elev)
<b>Reference Site:</b>	S21-T2N-R68W	<b>MD Reference:</b>	23' KB @ 4924.00usft (Original Well Elev)
<b>Site Error:</b>	0.00 usft	<b>North Reference:</b>	True
<b>Reference Well:</b>	DREAM WEAVER North 3G-21H-N268	<b>Survey Calculation Method:</b>	Minimum Curvature
<b>Well Error:</b>	0.00 usft	<b>Output errors are at</b>	2.00 sigma
<b>Reference Wellbore</b>	OH	<b>Database:</b>	USA EDM 5000 Multi Users DB
<b>Reference Design:</b>	PLAN #1	<b>Offset TVD Reference:</b>	Offset Datum

Summary						
Site Name	Reference Measured Depth (usft)	Offset Measured Depth (usft)	Distance Between Centres (usft)	Distance Between Ellipses (usft)	Separation Factor	Warning
S21-T2N-R68W (OFFSETS)						
MLEYNEK 28-10M - KMG WELL - GYRO						Out of range
MLEYNEK U 28-10JI - KMG WELL - GYRO						Out of range
MLEYNEK U 28-15JI - KMG WELL - GYRO						Out of range
MORGAN-A 4 - KPK WELL - NO SURVEYS						Out of range
NELSON 42-33 /2-68/ 2 - ANADARKO WELL - NO SURV						Out of range
NELSON DUANE E 41-33 (2-68) 1 - CHAMPLIN PETRO						Out of range
NELSON DUANE E 41-33 (2-68) 1-X - KMG WELL - NO						Out of range
NELSON E UNIT 2 - CPR WELL - GYRO						Out of range
NELSON MILTON H 'D' 1 - KMG WELL - GYRO						Out of range
NELSON MILTON H 'M' 1 - KMG WELL - GYRO						Out of range
NELSON MILTON-F 1 - KPK WELL - NO SURVEYS						Out of range
NORTH RINN 0-4-9 - CPR WELL - SURVEYS	19,626.62	7,724.51	1,413.96	1,199.15	6.583	CC, ES, SF
NORTH RINN 0-6-9 - CPR WELL - SURVEYS	18,765.97	7,485.43	1,405.73	1,206.89	7.070	CC
NORTH RINN 0-6-9 - CPR WELL - SURVEYS	18,800.00	7,485.20	1,406.14	1,206.69	7.050	ES
NORTH RINN 0-6-9 - CPR WELL - SURVEYS	18,900.00	7,484.50	1,412.10	1,211.39	7.035	SF
NORTH RINN 0-8-9 - CPR WELL - SURVEYS	17,452.46	7,629.12	1,403.82	1,216.67	7.501	CC, ES
NORTH RINN 0-8-9 - CPR WELL - SURVEYS	17,500.00	7,628.34	1,404.63	1,217.27	7.497	SF
NORTH RINN 13-9 - CPR WELL - SURVEYS	19,423.57	7,469.96	720.19	507.07	3.379	CC, ES, SF
NORTH RINN 14-9 - CPR WELL - SURVEYS	18,028.38	7,424.64	786.18	598.30	4.184	CC, ES, SF
NORTH RINN 24-9 - CPR WELL - SURVEYS	18,136.30	7,474.65	566.65	377.18	2.991	CC, ES, SF
NORTH RINN 2-4-9 - CPR WELL - SURVEYS	19,626.62	7,561.12	359.93	301.01	6.108	CC, ES, SF
NORTH RINN 2-6-9 - CPR WELL - SURVEYS	18,675.17	7,363.66	360.67	165.24	1.846	CC, ES, SF
OSKARSON 1 - HRM RES II LLC - NO SURVEYS						Out of range
OSKARSON 2 - ENERVEST OP - NO SURVEYS						Out of range
OSKARSON 24-33 - CPR WELL - GYRO						Out of range
OSKARSON 2-8-33 - CPR WELL - SURVEYS						Out of range
OSKARSON 3 - HRM RES II LLC - NO SURVEYS						Out of range
OSKARSON-E 1 - CPR WELL - GYRO						Out of range
OSKARSON-E 2 - CPR WELL - NO SURVEYS						Out of range
RASMUSSEN 3 - PETERSON ENERGY - GYRO						Out of range
RASMUSSEN 1 - PETERSON - GYRO	5,130.53	4,967.00	1,251.98	1,230.95	59.527	CC, ES
RASMUSSEN 1 - PETERSON - GYRO	5,300.00	4,967.00	1,263.40	1,241.97	58.936	SF
RASMUSSEN 11-28 - CPR WELL - SURVEYS	6,753.35	6,997.99	1,196.22	1,143.88	22.852	CC, ES
RASMUSSEN 11-28 - CPR WELL - SURVEYS	6,800.00	7,041.92	1,197.39	1,144.85	22.791	SF
RASMUSSEN 12-28 - CPR WELL - SURVEYS						Out of range
RASMUSSEN 2 - PETERSON ENERGY - NO SURVEYS						Out of range
RASMUSSEN 21-28 - CPR WELL - GYRO	6,748.97	6,700.75	979.32	949.37	32.694	CC, ES
RASMUSSEN 21-28 - CPR WELL - GYRO	6,900.00	6,852.46	994.74	964.09	32.447	SF
RASMUSSEN 22-28 - CPR WELL - GYRO						Out of range
RASMUSSEN 2-4-28 - CPR WELL - SURVEYS						Out of range
RASMUSSEN 31-28 - CPR WELL - GYRO	6,619.96	6,557.64	1,862.83	1,831.93	60.288	CC, ES
RASMUSSEN 31-28 - CPR WELL - GYRO	7,000.00	6,936.36	1,902.36	1,869.80	58.429	SF
RASMUSSEN 32-28 32-28 - CPR WELL - GYRO						Out of range
RASMUSSEN 4-0-28 - CPR WELL - SURVEYS	6,180.03	6,568.50	1,117.15	1,060.66	19.778	CC
RASMUSSEN 4-0-28 - CPR WELL - SURVEYS	6,300.00	6,684.61	1,117.44	1,060.33	19.565	ES
RASMUSSEN 4-0-28 - CPR WELL - SURVEYS	6,800.00	7,195.88	1,128.61	1,069.00	18.932	SF
RASMUSSEN 41-28 - CPR WELL - GYRO						Out of range
RASMUSSEN 42-28 - CPR WELL - SURVEYS						Out of range
RASMUSSEN 4-2-28 - CPR WELL - SURVEYS						Out of range
RASMUSSEN 4-4-28 - CPR WELL - SURVEYS						Out of range
RASMUSSEN 44-29 - KPK WELL - NO SURVEYS						Out of range

CC - Min centre to center distance or convergent point, SF - min separation factor, ES - min ellipse separation

# Cathedral Energy Services

## Anticollision Summary Report

<b>Company:</b>	Crestone Peak Resources	<b>Local Co-ordinate Reference:</b>	Well DREAM WEAVER North 3G-21H-N268 - Slot DREAM WEAVER North 3G-21H-N268 SHL
<b>Project:</b>	DJ BASIN	<b>TVD Reference:</b>	23' KB @ 4924.00usft (Original Well Elev)
<b>Reference Site:</b>	S21-T2N-R68W	<b>MD Reference:</b>	23' KB @ 4924.00usft (Original Well Elev)
<b>Site Error:</b>	0.00 usft	<b>North Reference:</b>	True
<b>Reference Well:</b>	DREAM WEAVER North 3G-21H-N268	<b>Survey Calculation Method:</b>	Minimum Curvature
<b>Well Error:</b>	0.00 usft	<b>Output errors are at</b>	2.00 sigma
<b>Reference Wellbore</b>	OH	<b>Database:</b>	USA EDM 5000 Multi Users DB
<b>Reference Design:</b>	PLAN #1	<b>Offset TVD Reference:</b>	Offset Datum

Summary						
Site Name Offset Well - Wellbore - Design	Reference Measured Depth (usft)	Offset Measured Depth (usft)	Distance Between Centres (usft)	Distance Between Ellipses (usft)	Separation Factor	Warning
S21-T2N-R68W (OFFSETS)						
RASMUSSEN 4-A - PETERSON ENERGY - GYRO	5,218.25	4,960.00	1,534.01	1,512.95	72.808	CC, ES
RASMUSSEN 4-A - PETERSON ENERGY - GYRO	5,500.00	4,960.00	1,559.67	1,537.85	71.466	SF
RASMUSSEN C" 2" - CPR WELL - GYRO						Out of range
RASMUSSEN-C-UNIT 1 - CPR WELL - GYRO	6,748.77	6,665.21	1,635.49	1,606.16	55.769	CC, ES
RASMUSSEN-C-UNIT 1 - CPR WELL - GYRO	6,900.00	6,799.67	1,650.36	1,620.36	55.007	SF
RODGERS 1 - KPK WELL - NO SURVEYS						Out of range
SAUNDERS TRUST 8-2K8 - EXTRACTION WELL - NO						Out of range
SCHLAGEL 2 - EXTRACTION WELL - NO SURVEYS						Out of range
SERAFINI E MAX GU 1 - KMG WELL - GYRO	13,076.04	7,428.40	390.22	285.15	3.714	CC, ES
SERAFINI E MAX GU 1 - KMG WELL - GYRO	13,100.00	7,429.39	390.95	285.58	3.710	SF
SERAFINI-B 2 - KPK WELL - NO SURVEYS						Out of range
SHAW 1 - KPK WELL - NO SURVEYS						Out of range
SHAW 15-20 - KPK - SURVEYS						Out of range
SHAW 16-20 - KPK - SURVEYS						Out of range
STROMQUIST 1 - KPK WELL - NO SURVEYS						Out of range
STROMQUIST 11-21 - KMG WELL - GYRO	8,817.40	7,393.36	571.30	528.14	13.237	CC, ES
STROMQUIST 11-21 - KMG WELL - GYRO	8,900.00	7,393.82	577.24	533.42	13.173	SF
STROMQUIST 13-21 - KMG WELL - GYRO	5,608.39	5,532.70	605.73	581.12	24.618	CC, ES
STROMQUIST 13-21 - KMG WELL - GYRO	7,400.00	7,280.74	652.16	618.90	19.605	SF
STROMQUIST 22-21 - KMG WELL - SURVEYS	9,359.28	7,490.87	184.09	129.06	3.346	CC, ES
STROMQUIST 22-21 - KMG WELL - SURVEYS	9,400.00	7,492.63	188.53	132.15	3.344	SF
STROMQUIST 23-21 - KMG WELL - SURVEYS	2,393.77	2,365.70	402.70	393.62	44.337	CC
STROMQUIST 23-21 - KMG WELL - SURVEYS	2,400.00	2,371.73	402.70	393.60	44.238	ES
STROMQUIST 23-21 - KMG WELL - SURVEYS	8,200.00	7,439.26	900.93	861.63	22.924	SF
STROMQUIST 34-21 - KMG WELL - SURVEYS	1,300.00	1,171.16	1,094.78	1,090.04	231.344	CC, ES
STROMQUIST 34-21 - KMG WELL - SURVEYS	7,100.00	7,107.80	1,510.69	1,473.99	41.158	SF
STROMQUIST 35-21 - KMG WELL - SURVEYS	6,783.62	6,809.41	334.20	300.48	9.913	CC, ES
STROMQUIST 35-21 - KMG WELL - SURVEYS	6,800.00	6,826.06	334.34	300.55	9.893	SF
TRAVELERS 28-11M - KMG WELL - GYRO						Out of range
TRAVELERS U 28-13DI - KMG WELL - GYRO						Out of range
UPRC 33-1M - KMG WELL - GYRO						Out of range
UPRR 43 PAN AM-B 7 - KPK WELL - NO SURVEYS						Out of range
WESTERN 3-21A - KMG WELL - GYRO	11,378.84	7,377.45	462.83	383.82	5.858	CC, ES
WESTERN 3-21A - KMG WELL - GYRO	11,400.00	7,377.52	463.31	384.12	5.850	SF
WILDFLOWER 12-27 - KMG WELL - SURVEYS						Out of range
WILDFLOWER 33-27 - KMG WELL - SURVEYS						Out of range
WOOLEY UNIT 1 - KPK WELL - NO SURVEYS						Out of range



# Cathedral Energy Services

## Anticollision Summary Report

<b>Company:</b>	Crestone Peak Resources	<b>Local Co-ordinate Reference:</b>	Well DREAM WEAVER North 3G-21H-N268 - Slot DREAM WEAVER North 3G-21H-N268 SHL
<b>Project:</b>	DJ BASIN	<b>TVD Reference:</b>	23' KB @ 4924.00usft (Original Well Elev)
<b>Reference Site:</b>	S21-T2N-R68W	<b>MD Reference:</b>	23' KB @ 4924.00usft (Original Well Elev)
<b>Site Error:</b>	0.00 usft	<b>North Reference:</b>	True
<b>Reference Well:</b>	DREAM WEAVER North 3G-21H-N268	<b>Survey Calculation Method:</b>	Minimum Curvature
<b>Well Error:</b>	0.00 usft	<b>Output errors are at</b>	2.00 sigma
<b>Reference Wellbore</b>	OH	<b>Database:</b>	USA EDM 5000 Multi Users DB
<b>Reference Design:</b>	PLAN #1	<b>Offset TVD Reference:</b>	Offset Datum

Summary						
Site Name	Reference Measured Depth (usft)	Offset Measured Depth (usft)	Distance Between Centres (usft)	Distance Between Ellipses (usft)	Separation Factor	Warning
<b>Offset Well - Wellbore - Design</b>						
S32-T2N-R68W						
Anderson 22-32 - KPK WELL - NO SURVEYS						Out of range
Anderson 32-32 - CPR WELL - SURVEYS						Out of range
Anderson 41-32 - CPR - GYRO						Out of range
Anderson 4-2-32 - CPR WELL - SURVEYS						Out of range
Anderson 6-4-32 - CPR WELL - SURVEYS						Out of range
Anderson Trust 1 - KPK - NO SURVEYS						Out of range
Anderson Trust 1 A - CPR WELL - GYRO						Out of range
Anderson Trust 2-A - CPR WELL - NO SURVEYS						Out of range
Anderson Trust 32-2 - CPR WELL - GYRO						Out of range
Anderson Trust 32-8 - CPR WELL - GYRO						Out of range
Anderson Trust C 1 - CPR WELL - SURVEYS						Out of range
Anderson Trust C Unit 2 - CPR WELL - GYRO						Out of range
Brown 22-5 - CPR WELL - GYRO						Out of range
Brown 31-5 - CPR WELL - SURVEYS						Out of range
Brown 41-5 - CPR WELL - SURVEYS						Out of range
Brown 5-3 - CPR WELL - GYRO						Out of range
Brown 5-5 - CPR WELL - GYRO						Out of range
Brown C Unit 1 - CPR WELL - GYRO						Out of range
Brown C Unit 2 - CPR WELL - GYRO						Out of range
Bryant 10-30 - KMG WELL - SURVEYS						Out of range
Bryant 16-30 - KMG WELL - SURVEYS						Out of range
Bryant 20-30 - KMG WELL - SURVEYS						Out of range
Bryant 23-30 - KMG WELL - SURVEYS						Out of range
Bryant 24-30 - KMG WELL - SURVEYS						Out of range
Bryant 33-29 - KMG WELL - SURVEYS						Out of range
Bryant 36-30 - KMG WELL - SURVEYS						Out of range
Bryant 8-30 - KMG WELL - SURVEYS						Out of range
Bryant Federal 37-30 - KMG WELL - SURVEYS						Out of range
Bulthaup 1-6 - KMG WELL - GYRO						Out of range
Bulthaup 16-6 - KMG WELL - SURVEYS						Out of range
Bulthaup 17-6 - KMG WELL - SURVEYS						Out of range
Bulthaup 24-6 - KMG WELL - SURVEYS						Out of range
Bulthaup 27-6 - KMG WELL - SURVEYS						Out of range
Bulthaup 39-6 - KMG WELL - SURVEYS						Out of range
Bulthaup 40-6 - KMG WELL - SURVEYS						Out of range
Bulthaup 8-6 - KMG WELL - GYRO						Out of range
Bulthaup 9-6 - KMG WELL - SURVEYS						Out of range
Canino 1-X - HUGHES CW - NO SURVEYS						Out of range
Champlin 86 Amoco F 6 - KPK - NO SURVEYS						Out of range
Champlin 86 N 1 - KMG WELL - GYRO						Out of range
Champlin Amoco 86 F 7 - KPK WELL - SURVEYS						Out of range
Cinque 1 - FOUNDATION WELL - NO SURVEYS						Out of range
Cinque 2 - FOUNDATION WELL - NO SURVEYS						Out of range
Cinque 4 - FOUNDATION WELL - NO SURVEYS						Out of range
FILE 3A-32H-K268 - OH - FINAL						Out of range
FILE 3B-32H-K268 - OH - FINAL						Out of range
FILE 3C-32H-K268 - OH - FINAL						Out of range
FILE 3D-32H-K268 - OH - FINAL						Out of range
FILE 3E-32H-K268 - OH - FINAL						Out of range
FILE 3F-32H-K268 - OH - FINAL						Out of range
FILE 3G-32H-K268 - OH - FINAL						Out of range

CC - Min centre to center distance or convergent point, SF - min separation factor, ES - min ellipse separation

# Cathedral Energy Services

## Anticollision Summary Report

<b>Company:</b>	Crestone Peak Resources	<b>Local Co-ordinate Reference:</b>	Well DREAM WEAVER North 3G-21H-N268 - Slot DREAM WEAVER North 3G-21H-N268 SHL
<b>Project:</b>	DJ BASIN	<b>TVD Reference:</b>	23' KB @ 4924.00usft (Original Well Elev)
<b>Reference Site:</b>	S21-T2N-R68W	<b>MD Reference:</b>	23' KB @ 4924.00usft (Original Well Elev)
<b>Site Error:</b>	0.00 usft	<b>North Reference:</b>	True
<b>Reference Well:</b>	DREAM WEAVER North 3G-21H-N268	<b>Survey Calculation Method:</b>	Minimum Curvature
<b>Well Error:</b>	0.00 usft	<b>Output errors are at</b>	2.00 sigma
<b>Reference Wellbore</b>	OH	<b>Database:</b>	USA EDM 5000 Multi Users DB
<b>Reference Design:</b>	PLAN #1	<b>Offset TVD Reference:</b>	Offset Datum

Summary						
Site Name	Reference Measured Depth (usft)	Offset Measured Depth (usft)	Distance Between Centres (usft)	Distance Between Ellipses (usft)	Separation Factor	Warning
<b>Offset Well - Wellbore - Design</b>						
S32-T2N-R68W						
FILE 3H-32H-K268 - OH - FINAL						Out of range
FILE 3Q-32H-K268 - OH - FINAL						Out of range
FILE 3R-32H-K268 - OH - FINAL						Out of range
FILE 3S-32H-K268 - OH - FINAL						Out of range
FILE 3T-32H-K268 - OH - FINAL						Out of range
FILE FED 3I-32H-K268 - OH - FINAL						Out of range
FILE FED 3J-32H-K268 - OH - FINAL						Out of range
FILE FED 3K-32H-K268 - OH - FINAL						Out of range
FILE FED 3K-32H-K268 - OH - PLAN #4						Out of range
FILE FED 3L-32H-K268 - OH - FINAL						Out of range
FILE FED 3M-32H-K268 - OH - FINAL						Out of range
FILE FED 3N-32H-K268 - OH - FINAL						Out of range
FILE FED 3O-32H-K268 - OH - FINAL						Out of range
FILE FED 3P-32H-K268 - OH - FINAL						Out of range
Foster 33-5 - CPR WELL - SURVEYS						Out of range
Foster 43-5 - CPR WELL - SURVEYS						Out of range
Foster 4-5 - CPR WELL - SURVEYS						Out of range
Foster 4-6-5 - CPR WELL - SURVEYS						Out of range
Foster 6-4-5 - CPR - SURVEYS						Out of range
Foster 6-4-5X - CPR WELL - SURVEYS						Out of range
Foster 6-8-5 - CPR WELL - SURVEYS						Out of range
Foster 8-8-5 - CPR WELL - SURVEYS						Out of range
Foster E Unit 1 - CPR - GYRO						Out of range
Gene 11-5 - KERR-MCGEE - GYRO						Out of range
Hankins 1 - KPK WELL - NO SURVEYS						Out of range
Hauck 17-29 - KMG WELL - SURVEYS						Out of range
Hauck 24-29 - KMG WELL - SURVEYS						Out of range
Hauck 7-29 - KMG WELL - SURVEYS						Out of range
HSR-Bryant 9-30A - KMG WELL - GYRO						Out of range
HSR-Williams 10-20 - KMG WELL - GYRO						Out of range
HWY52 4A-32H-O268 - OH - FINAL						Out of range
HWY52 4B-32H-O268 - OH - FINAL						Out of range
HWY52 4C-32H-O268 - OH - FINAL						Out of range
HWY52 4D-32H-O268 - OH - FINAL						Out of range
HWY52 4E-32H-O268 - OH - FINAL						Out of range
HWY52 4F-32H-O268 - OH - FINAL						Out of range
HWY52 4G-32H-O268 - OH - FINAL						Out of range
HWY52 4H-32H-O268 - OH - FINAL						Out of range
HWY52 4I-32H-O268 - OH - FINAL						Out of range
HWY52 4J-32H-O268 - OH - FINAL						Out of range
HWY52 4K-32H-O268 - OH - FINAL						Out of range
HWY52 4L-32H-O268 - OH - FINAL						Out of range
HWY52 4M-32H-O268 - OH - FINAL						Out of range
HWY52 4N-32H-O268 - OH - FINAL						Out of range
HWY52 4O-32H-O268 - OH - FINAL						Out of range
HWY52 4P-32H-O268 - OH - FINAL						Out of range
HWY52 4Q-32H-O268 - OH - FINAL						Out of range
HWY52 4R-32H-O268 - OH - FINAL						Out of range
HWY52 4S-32H-O268 - OH - FINAL						Out of range
HWY52 4T-32H-O268 - OH - FINAL						Out of range
HWY52 4U-32H-O268 - OH - FINAL						Out of range

CC - Min centre to center distance or convergent point, SF - min separation factor, ES - min ellipse separation

# Cathedral Energy Services

## Anticollision Summary Report

<b>Company:</b>	Crestone Peak Resources	<b>Local Co-ordinate Reference:</b>	Well DREAM WEAVER North 3G-21H-N268 - Slot DREAM WEAVER North 3G-21H-N268 SHL
<b>Project:</b>	DJ BASIN	<b>TVD Reference:</b>	23' KB @ 4924.00usft (Original Well Elev)
<b>Reference Site:</b>	S21-T2N-R68W	<b>MD Reference:</b>	23' KB @ 4924.00usft (Original Well Elev)
<b>Site Error:</b>	0.00 usft	<b>North Reference:</b>	True
<b>Reference Well:</b>	DREAM WEAVER North 3G-21H-N268	<b>Survey Calculation Method:</b>	Minimum Curvature
<b>Well Error:</b>	0.00 usft	<b>Output errors are at</b>	2.00 sigma
<b>Reference Wellbore</b>	OH	<b>Database:</b>	USA EDM 5000 Multi Users DB
<b>Reference Design:</b>	PLAN #1	<b>Offset TVD Reference:</b>	Offset Datum

Summary						
Site Name	Reference Measured Depth (usft)	Offset Measured Depth (usft)	Distance Between Centres (usft)	Distance Between Ellipses (usft)	Separation Factor	Warning
<b>Offset Well - Wellbore - Design</b>						
S32-T2N-R68W						
HWY52 4V-32H-O268 - OH - FINAL						Out of range
HWY52 4W-32H-O268 - OH - FINAL						Out of range
Jack Hein Unit 1 - HS RESOURCES WELL - NO SURVE						Out of range
John Lamar 1 - KPK WELL - NO SURVEYS						Out of range
Johnson 32-30 - KPK WELL - NO SURVEYS						Out of range
Johnson 7-30A - KMG WELL - GYRO						Out of range
Kenneth Koch 1 - KPK WELL - NO SURVEYS						Out of range
Kenyon 34-19 - CPR WELL - SURVEYS						Out of range
Kenyon 4-8-19 - CPR WELL - SURVEYS						Out of range
Kenyon 8-4-19 - CPR WELL - SURVEYS						Out of range
Kenyon 8-6-19 - CPR WELL - SURVEYS						Out of range
Kenyon 8-8-19 - CPR WELL - SURVEYS						Out of range
Koch 41-6 - KPK WELL - NO SURVEYS						Out of range
Koch Kenneth E A-1 - KMG WELL - SURVEY						Out of range
Milton H Nelson H-1 - KMG WELL - GYRO						Out of range
Milton H Nelson I1 - KMG WELL - GYRO						Out of range
Milton H Nelson L1 - KMG WELL - GYRO						Out of range
Milton Nelson K1 - KMG WELL - GYRO						Out of range
Nelson 1 - TEXAS TEA - NO SURVEYS						Out of range
Nelson 1-A - TEXAS TEA WELL - NO SURVEYS						Out of range
Nelson 2 - TEXAS TEA WELL - NO SURVEYS						Out of range
Nelson 3 - TEXAS TEA WELL - NO SURVEYS						Out of range
Nelson 4 - TEXAS TEA WELL - NO SURVEYS						Out of range
Nelson 5 - TEXAS TEA WELL - NO SURVEYS						Out of range
Nelson D2 - KPK WELL - NO SURVEYS						Out of range
Nelson E Unit 1 - CPR WELL - GYRO						Out of range
Nelson E Unit 2 - CPR WELL - GYRO						Out of range
NOAA Federal 11-32 - CPR WELL - GYRO						Out of range
Osarkson 2-8-33 - CPR WELL - SURVEYS						Out of range
Oskarson 13-33 - CPR - GYRO						Out of range
Oskarson 23-33 - CPR WELL - GYRO						Out of range
Oskarson 4 - HRM - NO SURVEYS						Out of range
Oskarson 4-4-33 - CPR WELL - SURVEYS						Out of range
Oskarson 4-6-33 - CPR WELL - SURVEYS						Out of range
Oskarson 4-8-33 - CPR WELL - SURVEYS						Out of range
Oskarson E Unit 1 - CPR WELL - GYRO						Out of range
Paquette 13-5 - KMG WELL - GYRO						Out of range
Paquette 14-5 - KERR-MCGEE - GYRO						Out of range
Rasmussen 10-29 - KMG WELL - SURVEYS						Out of range
Rasmussen 14-29 - KMG WELL - SURVEYS						Out of range
Rasmussen 16-29 - KMG WELL - SURVEYS						Out of range
Rasmussen 19-29 - KMG WELL - SURVEYS						Out of range
Rasmussen 20-29 - KMG WELL - SURVEYS						Out of range
Rasmussen 22-29 - KMG WELL - SURVEYS						Out of range
Rasmussen 23-29 - KMG WELL - SURVEYS						Out of range
Rasmussen 25-29 - KMG WELL - SURVEYS						Out of range
Rasmussen 36-29 - KMG WELL - SURVEYS						Out of range
Rasmussen 37-29 - KMG WELL - SURVEYS						Out of range
Rasmussen 39-29 - KMG WELL - SURVEYS						Out of range
Rasmussen Fed 35-29 - KMG WELL - SURVEYS						Out of range
Ray Nelson 0-4-32 - CPR WELL - SURVEYS						Out of range

CC - Min centre to center distance or convergent point, SF - min separation factor, ES - min ellipse separation

# Cathedral Energy Services

## Anticollision Summary Report

<b>Company:</b>	Crestone Peak Resources	<b>Local Co-ordinate Reference:</b>	Well DREAM WEAVER North 3G-21H-N268 - Slot DREAM WEAVER North 3G-21H-N268 SHL
<b>Project:</b>	DJ BASIN	<b>TVD Reference:</b>	23' KB @ 4924.00usft (Original Well Elev)
<b>Reference Site:</b>	S21-T2N-R68W	<b>MD Reference:</b>	23' KB @ 4924.00usft (Original Well Elev)
<b>Site Error:</b>	0.00 usft	<b>North Reference:</b>	True
<b>Reference Well:</b>	DREAM WEAVER North 3G-21H-N268	<b>Survey Calculation Method:</b>	Minimum Curvature
<b>Well Error:</b>	0.00 usft	<b>Output errors are at</b>	2.00 sigma
<b>Reference Wellbore</b>	OH	<b>Database:</b>	USA EDM 5000 Multi Users DB
<b>Reference Design:</b>	PLAN #1	<b>Offset TVD Reference:</b>	Offset Datum

### Summary

Site Name Offset Well - Wellbore - Design	Reference Measured Depth (usft)	Offset Measured Depth (usft)	Distance Between Centres (usft)	Distance Between Ellipses (usft)	Separation Factor	Warning
S32-T2N-R68W						
Ray Nelson 12-32 - CPR WELL - GYRO						Out of range
Ray Nelson 13-32 - CPR WELL - SURVEYS						Out of range
Ray Nelson 14-32 - CPR WELL - SURVEYS						Out of range
Ray Nelson 23-32 - CPR WELL - GYRO						Out of range
Ray Nelson 24-32 - CPR WELL - SURVEYS						Out of range
Ray Nelson 2-4-32 - CPR WELL - SURVEYS						Out of range
Ray Nelson 33-32 - CPR WELL - SURVEYS						Out of range
Ray Nelson 34-32 - CPR WELL - SURVEYS						Out of range
Ray Nelson 44-32 - CPR WELL - SURVEYS						Out of range
Ray Nelson 4-4-32 - CPR WELL - SURVEYS						Out of range
Ray Nelson 4-6-32 - CPR WELL - SURVEYS						Out of range
Ray Nelson 8-8-32 - CPR WELL - SURVEYS						Out of range
Regnier Farms 32-19 - CPR WELL - GYRO						Out of range
Regnier Farms 33-19 - CPR WELL - GYRO						Out of range
Regnier Farms 42-19 - CPR WELL - GYRO						Out of range
Regnier Farms 43-19 - CPR WELL - SURVEYS						Out of range
Regnier Farms B 2 - CPR WELL - GYRO						Out of range
Regnier Farms B Unit 1 - CPR WELL - GYRO						Out of range
Sawdey Unit 2 - KMG WELL - GYRO						Out of range
Schriner 11-5 - KMG WELL - GYRO						Out of range
Schriner 12-5 - KMG WELL - GYRO						Out of range
SEC Four 12-4 - KMG WELL - SURVEYS						Out of range
SEC Four 13-4 - KMG WELL - SURVEYS						Out of range
SEC Four 14-4 - KMG WELL - SURVEYS						Out of range
SEC Four 21-4 - KMG WELL - SURVEYS						Out of range
SEC Four 22-4 - KMG WELL - SURVEYS						Out of range
SEC Four 31-4 - KMG WELL - SURVEYS						Out of range
SEC Four 32-4 - KMG WELL - SURVEYS						Out of range
SEC Four 33-4 - KMG WELL - SURVEYS						Out of range
SEC Four 3-4 - KMG WELL - SURVEYS						Out of range
SEC Four 35-4 - KMG WELL - SURVEYS						Out of range
SEC Four 4-4 - KMG WELL - SURVEYS						Out of range
SEC Four 5-4 - KMG WELL - SURVEYS						Out of range
SEC Four 6-4 - KMG WELL - SURVEYS						Out of range
Shaw 11-29A - KMG WELL - SURVEYS						Out of range
Shaw 12-29A - KMG - GYRO						Out of range
Shaw 15-20 - KPK - SURVEYS						Out of range
Shaw 16-20 - KPK - SURVEYS						Out of range
Tallgrass 1-8 - KMG - SURVEYS						Out of range
Tallgrass 2-8 - KMG - SURVEYS						Out of range
Tallgrass 3-8 - KMG - SURVEYS						Out of range
Tallgrass 4-8 - KMG - SURVEYS						Out of range
Tallgrass 5-8 - KMG - SURVEYS						Out of range
Tallgrass 6-8 - KMG WELL - SURVEYS						Out of range
Williams 10-20 - KMG WELL - SURVEYS						Out of range
Williams 11-20 - KMG WELL - SURVEYS						Out of range
Williams 13-20 - KMG WELL - SURVEYS						Out of range
Williams 14-20 - KMG WELL - SURVEYS						Out of range
Williams 16-20 - KMG WELL - SURVEYS						Out of range
Williams 18-29 - KMG WELL - SURVEYS						Out of range
Williams 23-20 - KMG WELL - SURVEYS						Out of range

CC - Min centre to center distance or convergent point, SF - min separation factor, ES - min ellipse separation

# Cathedral Energy Services

## Anticollision Summary Report

<b>Company:</b>	Crestone Peak Resources	<b>Local Co-ordinate Reference:</b>	Well DREAM WEAVER North 3G-21H-N268 - Slot DREAM WEAVER North 3G-21H-N268 SHL
<b>Project:</b>	DJ BASIN	<b>TVD Reference:</b>	23' KB @ 4924.00usft (Original Well Elev)
<b>Reference Site:</b>	S21-T2N-R68W	<b>MD Reference:</b>	23' KB @ 4924.00usft (Original Well Elev)
<b>Site Error:</b>	0.00 usft	<b>North Reference:</b>	True
<b>Reference Well:</b>	DREAM WEAVER North 3G-21H-N268	<b>Survey Calculation Method:</b>	Minimum Curvature
<b>Well Error:</b>	0.00 usft	<b>Output errors are at</b>	2.00 sigma
<b>Reference Wellbore</b>	OH	<b>Database:</b>	USA EDM 5000 Multi Users DB
<b>Reference Design:</b>	PLAN #1	<b>Offset TVD Reference:</b>	Offset Datum

Summary						
Site Name Offset Well - Wellbore - Design	Reference Measured Depth (usft)	Offset Measured Depth (usft)	Distance Between Centres (usft)	Distance Between Ellipses (usft)	Separation Factor	Warning
S32-T2N-R68W						
Williams 24-20 - KMG WELL - SURVEYS						Out of range
Williams 24-20X - KMG WELL - SURVEYS						Out of range
Williams 25-20 - KMG WELL - SURVEYS						Out of range
Williams 35-20 - KMG WELL - SURVEYS						Out of range
Williams 36-20 - KMG WELL - SURVEYS						Out of range
Williams 39-20 - KMG WELL - SURVEYS	8,159.05	7,621.21	1,559.65	1,515.94	35.683	CC, ES
Williams 39-20 - KMG WELL - SURVEYS	8,900.00	7,628.73	1,726.69	1,673.20	32.282	SF
Williams 4-29 - KMG WELL - SURVEYS						Out of range
Williams 7-20 - KMG WELL - SURVEYS						Out of range
Williams 8-20 - KMG WELL - SURVEYS						Out of range
Williams 9-20 - KMG WELL - SURVEYS						Out of range
Woolley 41-7 - CPR WELL - GYRO						Out of range
Woolley 42-7 KPK - KPK WELL - SURVEYS						Out of range

# Cathedral Energy Services

## Anticollision Summary Report

<b>Company:</b>	Crestone Peak Resources	<b>Local Co-ordinate Reference:</b>	Well DREAM WEAVER North 3G-21H-N268 - Slot DREAM WEAVER North 3G-21H-N268 SHL
<b>Project:</b>	DJ BASIN	<b>TVD Reference:</b>	23' KB @ 4924.00usft (Original Well Elev)
<b>Reference Site:</b>	S21-T2N-R68W	<b>MD Reference:</b>	23' KB @ 4924.00usft (Original Well Elev)
<b>Site Error:</b>	0.00 usft	<b>North Reference:</b>	True
<b>Reference Well:</b>	DREAM WEAVER North 3G-21H-N268	<b>Survey Calculation Method:</b>	Minimum Curvature
<b>Well Error:</b>	0.00 usft	<b>Output errors are at</b>	2.00 sigma
<b>Reference Wellbore</b>	OH	<b>Database:</b>	USA EDM 5000 Multi Users DB
<b>Reference Design:</b>	PLAN #1	<b>Offset TVD Reference:</b>	Offset Datum

Summary						
Site Name	Reference Measured Depth (usft)	Offset Measured Depth (usft)	Distance Between Centres (usft)	Distance Between Ellipses (usft)	Separation Factor	Warning
<b>Offset Well - Wellbore - Design</b>						
S7-T1N-R68W (Woolley-S/B/Morgan Hills)						
BAILEY 8-8-1 (EXISTING) - CPR WELL - SURVEYS						Out of range
BEARDEN 0-6-6 (EXISTING) - CPR WELL - SURVEYS						Out of range
BEARDEN 1 (EXISTING) - CPR WELL - GYRO						Out of range
BEARDEN 13-6 (EXISTING) - CPR WELL - SURVEYS						Out of range
BEARDEN 14-6 (EXISTING) - CPR WELL - SURVEYS						Out of range
BEARDEN 23-6 (EXISTING) - ENCANA WELL - GYRO						Out of range
BEARDEN 24-6 (EXISTING) - CPR WELL - CPR WELL						Out of range
BEARDEN 2-4-6 (EXISTING) - CPR WELL - SURVEYS						Out of range
BEARDEN 2-8-6 (EXISTING) - CPR WELL - SURVEYS						Out of range
BECKY 1 (EXISTING) - FOUNDATION WELL - NO SUR						Out of range
BECKY 2-6 (EXISTING) - EXTRACTION WELL - GYRO						Out of range
BECKY 5-6 (EXISTING) - FOUNDATION WELL - NO SU						Out of range
BECKY 7-6 (EXISTING) - EXTRACTION WELL - GYRO						Out of range
BILLINGS 21-7 (EXISTING) - KPK WELL - SURVEYS						Out of range
BULTHAUP 10-6 (EXISTING) - KMG WELL - SURVEYS						Out of range
BULTHAUP 15-6 (EXISTING) - KMG WELL - GYRO						Out of range
BULTHAUP 17-6 (EXISTING) - KMG WELL - SURVEYS						Out of range
BULTHAUP 21-6 (EXISTING) - KMG WELL - SURVEYS						Out of range
BULTHAUP 23-6 (EXISTING) - KMG WELL - SURVEYS						Out of range
BULTHAUP 27-6 (EXISTING) - KMG WELL - SURVEYS						Out of range
CANYON CREEK 43-13 (EXISTING) - CPR WELL - SUR						Out of range
CANYON CREEK 8-6-13X (EXISTING) - CPR WELL - S						Out of range
CHAMPLIN-86-AMOCO 1 (EXISTING) - AMOCO - SURV						Out of range
COAL CREEK 6-0-19 (EXISTING) - CPR WELL - STK						Out of range
COAL CREEK 6-0-19 (EXISTING) - OH - SURVEYS						Out of range
COMMONS 28-19 (EXISTING) - KMG WELL - SURVEYS						Out of range
ERIE CHAMPLIN 18-9 (EXISTING) - EXISTING - SURVE						Out of range
ERIE CHAMPLIN B UNIT 1 - CPR WELL - GYRO						Out of range
ERIE CHAMPLIN B UNIT 2 - CPR WELL - GYRO						Out of range
I & J 7-6 (EXISTING) - KMG WELL - GYRO						Out of range
Morgan Hills 1A-7H-A168 - HZ - FINAL						Out of range
Morgan Hills 1B-7H-A168 - HZ - FINAL						Out of range
Morgan Hills 1C-7H-A168 - HZ - FINAL						Out of range
Morgan Hills 1D-7H-A168 - HZ - FINAL						Out of range
Morgan Hills 1E-7H-A168 - HZ - FINAL						Out of range
Morgan Hills 1F-7H-A168 - HZ - FINAL						Out of range
Morgan Hills 1G-7H-A168 - HZ - FINAL						Out of range
Morgan Hills 1H-7H-A168 - HZ - FINAL						Out of range
Morgan Hills 1I-7H-A168 - OH - FINAL						Out of range
SOSA 11-18 (EXISTING) - CPR WELL - SURVEYS						Out of range
SOSA 12-18 (EXISTING) - CPR WELL - SURVEYS						Out of range
SOSA 21-18 (EXISTING) - CPR WELL - SURVEYS						Out of range
SOSA 22-18 (EXISTING) - CPR WELL - SURVEYS						Out of range
SOSA A UNIT 1 (EXISTING) - CPR WELL - GYRO						Out of range
TALLGRASS 33-17 (EXISTING) - KMG WELL - SURVEY						Out of range
THOMAS 14-7(EXISTING) - CPR WELL - SURVEYS						Out of range
THOMAS 24-7 (EXISTING) - CPR WELL - SURVEYS						Out of range
THOMAS 2-8-7 (EXISTING) - CPR WELL - SURVEYS						Out of range
THOMAS 33-7 (EXISTING) - CPR WELL - SURVEYS						Out of range
THOMAS 7-12 (EXISTING) - CPR WELL - GYRO						Out of range
Thomas 7-14 (AL) - Existing - NO SURVEYS						Out of range

CC - Min centre to center distance or convergent point, SF - min separation factor, ES - min ellipse separation



# Cathedral Energy Services

## Anticollision Summary Report

<b>Company:</b>	Crestone Peak Resources	<b>Local Co-ordinate Reference:</b>	Well DREAM WEAVER North 3G-21H-N268 - Slot DREAM WEAVER North 3G-21H-N268 SHL
<b>Project:</b>	DJ BASIN	<b>TVD Reference:</b>	23' KB @ 4924.00usft (Original Well Elev)
<b>Reference Site:</b>	S21-T2N-R68W	<b>MD Reference:</b>	23' KB @ 4924.00usft (Original Well Elev)
<b>Site Error:</b>	0.00 usft	<b>North Reference:</b>	True
<b>Reference Well:</b>	DREAM WEAVER North 3G-21H-N268	<b>Survey Calculation Method:</b>	Minimum Curvature
<b>Well Error:</b>	0.00 usft	<b>Output errors are at</b>	2.00 sigma
<b>Reference Wellbore</b>	OH	<b>Database:</b>	USA EDM 5000 Multi Users DB
<b>Reference Design:</b>	PLAN #1	<b>Offset TVD Reference:</b>	Offset Datum

Summary						
Site Name	Reference Measured Depth (usft)	Offset Measured Depth (usft)	Distance Between Centres (usft)	Distance Between Ellipses (usft)	Separation Factor	Warning
Offset Well - Wellbore - Design						
S7-T1N-R68W (Woolley-S/B/Morgan Hills)						
THOMAS E UNIT 1 (EXISTING) - CPR WELL - GYRO						Out of range
THOMAS E UNIT 2 - VESSELS WELL - INC ONLY						Out of range
THOMAS K UNIT 1 (EXISTING) - EXISTING - NO SURV						Out of range
WHEELER G UNIT 1 - CPR - GYRO						Out of range
WIGGETT 13-1 - CPR - GYRO						Out of range
WIGGETT 8-2-13 (EXISTING) - CPR WELL - SURVEYS						Out of range
WOOLLEY 11-7 (EXISTING) - CPR WELL - SURVEYS						Out of range
WOOLLEY 12-7 (EXISTING) - CPR WELL - GYRO						Out of range
WOOLLEY 21-7 (EXISTING) - CPR WELL - GYRO						Out of range
WOOLLEY 22-7 (EXISTING) - CPR WELL - SURVEYS						Out of range
WOOLLEY 2-4-7 (EXISTING) - CPR WELL - SURVEYS						Out of range
WOOLLEY 4-0-7 (EXISTING) - CPR WELL - SURVEYS						Out of range
WOOLLEY 41-7 (EXISTING) - CPR WELL - GYRO						Out of range
WOOLLEY 42-7 (EXISTING) - CPR WELL - GYRO						Out of range
WOOLLEY 42-7 KPK (EXISTING) - KPK WELL - SURVE						Out of range
WOOLLEY A 1-7 (EXISTING) - CPR WELL - GYRO						Out of range
WOOLLEY F UNIT 1 (EXISTING) - CPR WELL - GYRO						Out of range
Woolley-Becky 2A-7H-E168 - Hz - FINAL						Out of range
Woolley-Becky 2B-7H-E168 - Hz - FINAL						Out of range
Woolley-Becky 2C-7H-E168 - Hz - FINAL						Out of range
Woolley-Becky 2D-7H-E168 - Hz - FINAL						Out of range
Woolley-Becky 2E-7H-E168 - Hz - FINAL						Out of range
Woolley-Becky 2F-7H-E168 - Hz - FINAL						Out of range
Woolley-Becky 2G-7H-E168 - Hz - FINAL						Out of range
Woolley-Becky 2H-7H-E168 - Hz - FINAL						Out of range
Woolley-Sosa 2A-7H-E168 - OH - FINAL						Out of range
Woolley-Sosa 2B-7H-E168 - HZ - FINAL						Out of range
Woolley-Sosa 2C-7H-E168 - HZ - FINAL						Out of range
Woolley-Sosa 2D-7H-E168 - HZ - FINAL						Out of range
Woolley-Sosa 2E-7H-E168 - HZ - FINAL						Out of range
Woolley-Sosa 2F-7H-E168 - HZ - FINAL						Out of range
Woolley-Sosa 2G-7H-E168 - HZ - FINAL						Out of range

# Cathedral Energy Services

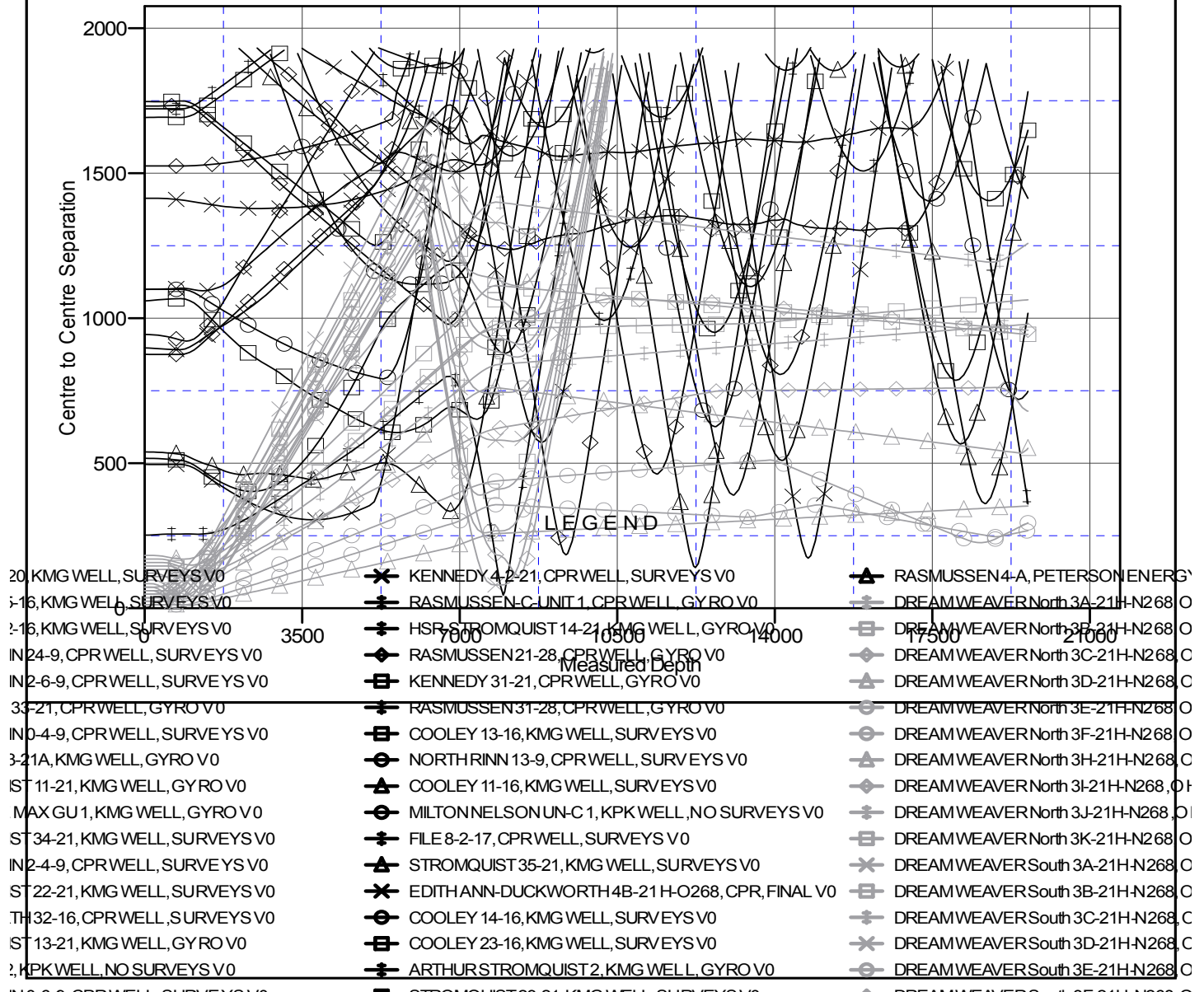
## Anticollision Summary Report

<b>Company:</b>	Crestone Peak Resources	<b>Local Co-ordinate Reference:</b>	Well DREAM WEAVER North 3G-21H-N268 - Slot DREAM WEAVER North 3G-21H-N268 SHL
<b>Project:</b>	DJ BASIN	<b>TVD Reference:</b>	23' KB @ 4924.00usft (Original Well Elev)
<b>Reference Site:</b>	S21-T2N-R68W	<b>MD Reference:</b>	23' KB @ 4924.00usft (Original Well Elev)
<b>Site Error:</b>	0.00 usft	<b>North Reference:</b>	True
<b>Reference Well:</b>	DREAM WEAVER North 3G-21H-N268	<b>Survey Calculation Method:</b>	Minimum Curvature
<b>Well Error:</b>	0.00 usft	<b>Output errors are at</b>	2.00 sigma
<b>Reference Wellbore</b>	OH	<b>Database:</b>	USA EDM 5000 Multi Users DB
<b>Reference Design:</b>	PLAN #1	<b>Offset TVD Reference:</b>	Offset Datum

Reference Depths are relative to 23' KB @ 4924.00usft (Original Well E  
Offset Depths are relative to Offset Datum  
Central Meridian is -105.500000

Coordinates are relative to: DREAM WEAVER North 3G-21H-N268 - Slot DREAM  
Coordinate System is US State Plane 1983, Colorado Northern Zone  
Grid Convergence at Surface is: 0.32°

### Ladder Plot



CC - Min centre to center distance or convergent point, SF - min separation factor, ES - min ellipse separation

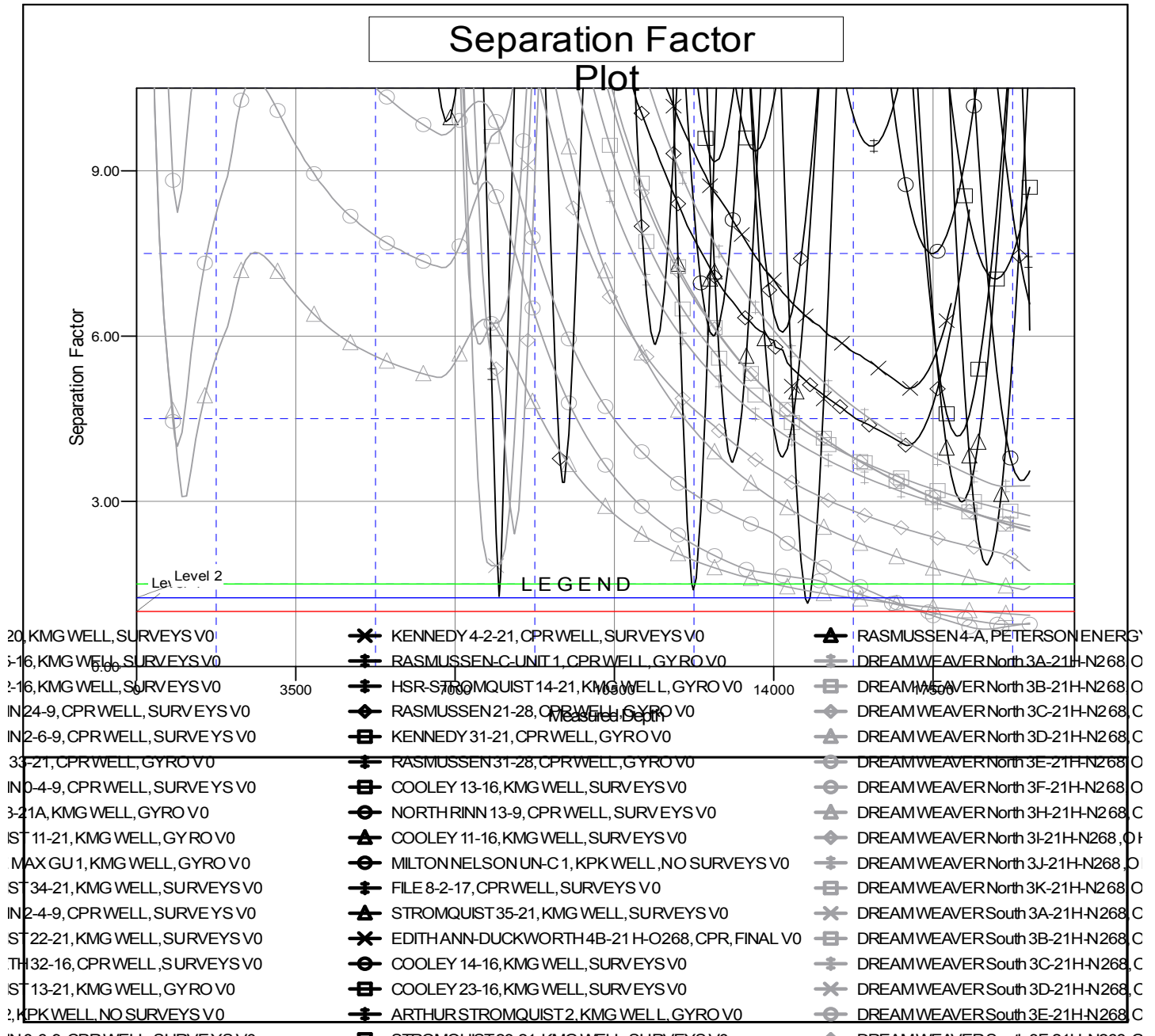
# Cathedral Energy Services

## Anticollision Summary Report

<b>Company:</b>	Crestone Peak Resources	<b>Local Co-ordinate Reference:</b>	Well DREAM WEAVER North 3G-21H-N268 - Slot DREAM WEAVER North 3G-21H-N268 SHL
<b>Project:</b>	DJ BASIN	<b>TVD Reference:</b>	23' KB @ 4924.00usft (Original Well Elev)
<b>Reference Site:</b>	S21-T2N-R68W	<b>MD Reference:</b>	23' KB @ 4924.00usft (Original Well Elev)
<b>Site Error:</b>	0.00 usft	<b>North Reference:</b>	True
<b>Reference Well:</b>	DREAM WEAVER North 3G-21H-N268	<b>Survey Calculation Method:</b>	Minimum Curvature
<b>Well Error:</b>	0.00 usft	<b>Output errors are at</b>	2.00 sigma
<b>Reference Wellbore</b>	OH	<b>Database:</b>	USA EDM 5000 Multi Users DB
<b>Reference Design:</b>	PLAN #1	<b>Offset TVD Reference:</b>	Offset Datum

Reference Depths are relative to 23' KB @ 4924.00usft (Original Well E  
Offset Depths are relative to Offset Datum  
Central Meridian is -105.500000

Coordinates are relative to: DREAM WEAVER North 3G-21H-N268 - Slot DREAM  
Coordinate System is US State Plane 1983, Colorado Northern Zone  
Grid Convergence at Surface is: 0.32°



CC - Min centre to center distance or convergent point, SF - min separation factor, ES - min ellipse separation