



CRESTONE PEAK
RESOURCES

SECTION DETAILS

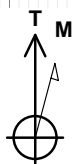
Sec	MD	Inc	Azi	TVD	+N/-S	+E/-W	Dleg	TFace	VSec	Target
1	0.00	0.00	0.00	0.00	0.00	0.00	0.00	0.00	0.00	
2	800.00	0.00	0.00	800.00	0.00	0.00	0.00	0.00	0.00	
3	1210.30	8.21	198.93	1208.90	-27.75	-9.52	2.00	198.93	-27.43	
4	6651.31	8.21	198.93	6594.20	-762.35	-261.45	0.00	0.00	-753.78	
5	7873.12	90.00	359.69	7406.00	-52.90	-303.84	8.00	160.58	-43.35	DREAM WEAVER North 3G-21H-N268 TPZ
6	19625.69	90.00	359.69	7406.00	11699.49	-367.01	0.00	0.0011705.24		DREAM WEAVER North 3G-21H-N268 BHL

PLAN #1
DREAM WEAVER North 3G-21H-N268
23' KB @ 4924.00usft (Original Well Elev)
Ground Level @ 4901.00

Well DREAM WEAVER North 3G-21H-N268 - Slot DREAM WEAVER North 3G-21H-N268 SHL, True North

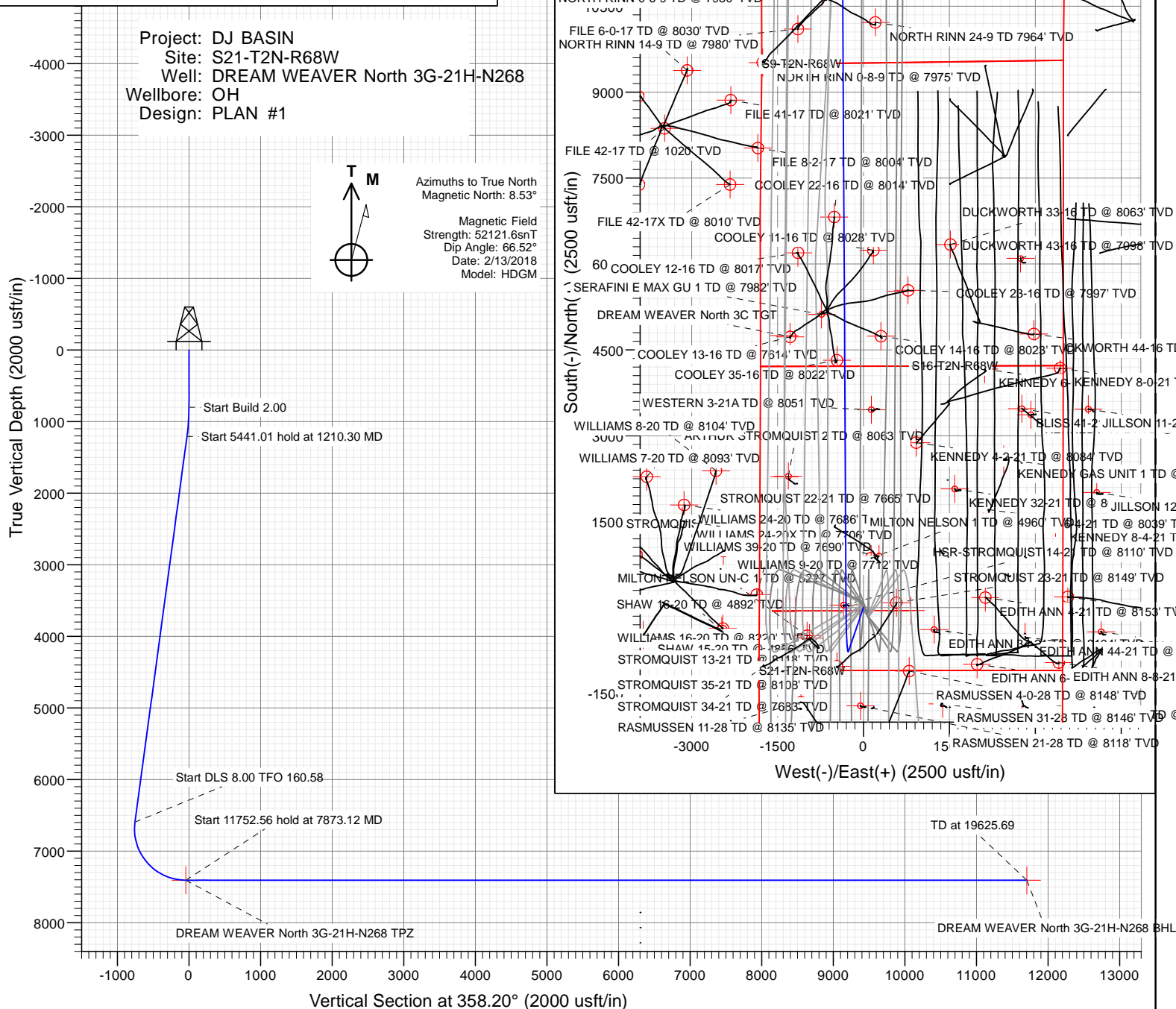
Type	Target	Azimuth	Origin	Type	N/S	E/W	From	TVD
TD	No Target (Freehand)	358.20	Slot	0.00	0.00	0.00	0.00	0.00
Name		TVD	+N/-S	+E/-W	Latitude	Longitude		
DREAM WEAVER North 3G-21H-N268 BHL		7406.00	11699.49	-367.01	40.119896	-105.011219		
DREAM WEAVER North 3G-21H-N268 TPZ		7406.00	-52.90	-303.84	40.119751	-105.012306		

Project: DJ BASIN
Site: S21-T2N-R68W
Well: DREAM WEAVER North 3G-21H-N268
Wellbore: OH
Design: PLAN #1



Azimuths to True North
Magnetic North: 8.53°

Magnetic Field
Strength: 52121.6snT
Dip Angle: 66.52°
Date: 2/13/2018
Model: HDGM



WELL DETAILS: DREAM WEAVER North 3G-21H-N268

+N/-S	+E/-W	Northing	Easting	Latitude	Longitude
0.00	0.00	1286898.91	3136692.31	40.119896	-105.011219

CATHEDRAL



Cathedral Energy Services

Planning Report

Database:	USA EDM 5000 Multi Users DB	Local Co-ordinate Reference:	Well DREAM WEAVER North 3G-21H-N268 - SI
Company:	Crestone Peak Resources	TVD Reference:	23' KB @ 4924.00usft (Original Well Elev)
Project:	DJ BASIN	MD Reference:	23' KB @ 4924.00usft (Original Well Elev)
Site:	S21-T2N-R68W	North Reference:	True
Well:	DREAM WEAVER North 3G-21H-N268	Survey Calculation Method:	Minimum Curvature
Wellbore:	OH		
Design:	PLAN #1		

Project	DJ BASIN		
Map System:	US State Plane 1983	System Datum:	Mean Sea Level
Geo Datum:	North American Datum 1983		
Map Zone:	Colorado Northern Zone		

Site		S21-T2N-R68W			
Site Position:		Northing:	1,286,960.17 usft	Latitude:	40.120065
From:	Lat/Long	Easting:	3,136,653.11 usft	Longitude:	-105.011358
Position Uncertainty:	0.00 usft	Slot Radius:	13-3/16 "	Grid Convergence:	0.32 °

Well	DREAM WEAVER North 3G-21H-N268 - Slot DREAM WEAVER North 3G-21H-N268 SHL					
Well Position	+N/-S	0.00 usft	Northing:	1,286,898.91 usft	Latitude:	40.119896
	+E/-W	0.00 usft	Easting:	3,136,692.31 usft	Longitude:	-105.011219
Position Uncertainty		0.00 usft	Wellhead Elevation:	usft	Ground Level:	4,901.00 usft

Wellbore	OH				
Magnetics	Model Name	Sample Date	Declination (°)	Dip Angle (°)	Field Strength (nT)
	HDGM	2/13/2018	8.53	66.52	52,121.60000000

Design	PLAN #1			
Audit Notes:				
Version:	Phase:	PLAN	Tie On Depth:	0.00
Vertical Section:	Depth From (TVD) (usft)	+N/-S (usft)	+E/-W (usft)	Direction (°)
	0.00	0.00	0.00	358.20

Plan Sections										
Measured Depth (usft)	Inclination (°)	Azimuth (°)	Vertical Depth (usft)	+N/-S (usft)	+E/-W (usft)	Dogleg Rate (°/100usft)	Build Rate (°/100usft)	Turn Rate (°/100usft)	TFO (°)	Target
0.00	0.00	0.00	0.00	0.00	0.00	0.00	0.00	0.00	0.00	
800.00	0.00	0.00	800.00	0.00	0.00	0.00	0.00	0.00	0.00	
1,210.30	8.21	198.93	1,208.90	-27.75	-9.52	2.00	2.00	0.00	198.93	
6,651.31	8.21	198.93	6,594.20	-762.35	-261.45	0.00	0.00	0.00	0.00	
7,873.12	90.00	359.69	7,406.00	-52.90	-303.84	8.00	6.69	13.16	160.58	DREAM WEAVER Nc
19,625.69	90.00	359.69	7,406.00	11,699.49	-367.01	0.00	0.00	0.00	0.00	DREAM WEAVER Nc

Cathedral Energy Services

Planning Report

Database:	USA EDM 5000 Multi Users DB	Local Co-ordinate Reference:	Well DREAM WEAVER North 3G-21H-N268 - SI
Company:	Crestone Peak Resources	TVD Reference:	23' KB @ 4924.00usft (Original Well Elev)
Project:	DJ BASIN	MD Reference:	23' KB @ 4924.00usft (Original Well Elev)
Site:	S21-T2N-R68W	North Reference:	True
Well:	DREAM WEAVER North 3G-21H-N268	Survey Calculation Method:	Minimum Curvature
Wellbore:	OH		
Design:	PLAN #1		

Planned Survey									
Measured Depth (usft)	Inclination (°)	Azimuth (°)	Vertical Depth (usft)	+N/-S (usft)	+E/-W (usft)	Vertical Section (usft)	Dogleg Rate (°/100usft)	Build Rate (°/100u)	Comments / Formations
0.00	0.00	0.00	0.00	0.00	0.00	0.00	0.00	0.00	
100.00	0.00	0.00	100.00	0.00	0.00	0.00	0.00	0.00	
200.00	0.00	0.00	200.00	0.00	0.00	0.00	0.00	0.00	
300.00	0.00	0.00	300.00	0.00	0.00	0.00	0.00	0.00	
400.00	0.00	0.00	400.00	0.00	0.00	0.00	0.00	0.00	
500.00	0.00	0.00	500.00	0.00	0.00	0.00	0.00	0.00	
600.00	0.00	0.00	600.00	0.00	0.00	0.00	0.00	0.00	
700.00	0.00	0.00	700.00	0.00	0.00	0.00	0.00	0.00	
800.00	0.00	0.00	800.00	0.00	0.00	0.00	0.00	0.00	
900.00	2.00	198.93	899.98	-1.65	-0.57	-1.63	2.00	2.00	
1,000.00	4.00	198.93	999.84	-6.60	-2.26	-6.53	2.00	2.00	
1,100.00	6.00	198.93	1,099.45	-14.84	-5.09	-14.68	2.00	2.00	
1,200.00	8.00	198.93	1,198.70	-26.37	-9.04	-26.08	2.00	2.00	
1,210.30	8.21	198.93	1,208.90	-27.75	-9.52	-27.43	2.00	2.00	
1,300.00	8.21	198.93	1,297.68	-39.86	-13.67	-39.41	0.00	0.00	
1,400.00	8.21	198.93	1,396.66	-53.36	-18.30	-52.76	0.00	0.00	
1,500.00	8.21	198.93	1,495.63	-66.86	-22.93	-66.11	0.00	0.00	
1,600.00	8.21	198.93	1,594.61	-80.36	-27.56	-79.46	0.00	0.00	
1,700.00	8.21	198.93	1,693.58	-93.86	-32.19	-92.81	0.00	0.00	
1,800.00	8.21	198.93	1,792.56	-107.36	-36.82	-106.16	0.00	0.00	
1,900.00	8.21	198.93	1,891.54	-120.86	-41.45	-119.50	0.00	0.00	
2,000.00	8.21	198.93	1,990.51	-134.36	-46.08	-132.85	0.00	0.00	
2,100.00	8.21	198.93	2,089.49	-147.87	-50.71	-146.20	0.00	0.00	
2,200.00	8.21	198.93	2,188.47	-161.37	-55.34	-159.55	0.00	0.00	
2,300.00	8.21	198.93	2,287.44	-174.87	-59.97	-172.90	0.00	0.00	
2,400.00	8.21	198.93	2,386.42	-188.37	-64.60	-186.25	0.00	0.00	
2,500.00	8.21	198.93	2,485.39	-201.87	-69.23	-199.60	0.00	0.00	
2,600.00	8.21	198.93	2,584.37	-215.37	-73.86	-212.95	0.00	0.00	
2,700.00	8.21	198.93	2,683.35	-228.87	-78.49	-226.30	0.00	0.00	
2,800.00	8.21	198.93	2,782.32	-242.37	-83.12	-239.65	0.00	0.00	
2,900.00	8.21	198.93	2,881.30	-255.88	-87.75	-253.00	0.00	0.00	
3,000.00	8.21	198.93	2,980.27	-269.38	-92.38	-266.35	0.00	0.00	
3,100.00	8.21	198.93	3,079.25	-282.88	-97.02	-279.70	0.00	0.00	
3,200.00	8.21	198.93	3,178.23	-296.38	-101.65	-293.05	0.00	0.00	
3,300.00	8.21	198.93	3,277.20	-309.88	-106.28	-306.40	0.00	0.00	
3,400.00	8.21	198.93	3,376.18	-323.38	-110.91	-319.75	0.00	0.00	
3,500.00	8.21	198.93	3,475.16	-336.88	-115.54	-333.10	0.00	0.00	
3,600.00	8.21	198.93	3,574.13	-350.38	-120.17	-346.45	0.00	0.00	
3,700.00	8.21	198.93	3,673.11	-363.89	-124.80	-359.79	0.00	0.00	
3,800.00	8.21	198.93	3,772.08	-377.39	-129.43	-373.14	0.00	0.00	
3,900.00	8.21	198.93	3,871.06	-390.89	-134.06	-386.49	0.00	0.00	
4,000.00	8.21	198.93	3,970.04	-404.39	-138.69	-399.84	0.00	0.00	
4,100.00	8.21	198.93	4,069.01	-417.89	-143.32	-413.19	0.00	0.00	
4,200.00	8.21	198.93	4,167.99	-431.39	-147.95	-426.54	0.00	0.00	
4,300.00	8.21	198.93	4,266.96	-444.89	-152.58	-439.89	0.00	0.00	
4,400.00	8.21	198.93	4,365.94	-458.40	-157.21	-453.24	0.00	0.00	
4,500.00	8.21	198.93	4,464.92	-471.90	-161.84	-466.59	0.00	0.00	
4,600.00	8.21	198.93	4,563.89	-485.40	-166.47	-479.94	0.00	0.00	
4,700.00	8.21	198.93	4,662.87	-498.90	-171.10	-493.29	0.00	0.00	
4,800.00	8.21	198.93	4,761.85	-512.40	-175.73	-506.64	0.00	0.00	
4,900.00	8.21	198.93	4,860.82	-525.90	-180.36	-519.99	0.00	0.00	
5,000.00	8.21	198.93	4,959.80	-539.40	-184.99	-533.34	0.00	0.00	

Cathedral Energy Services

Planning Report

Database:	USA EDM 5000 Multi Users DB	Local Co-ordinate Reference:	Well DREAM WEAVER North 3G-21H-N268 - SI
Company:	Crestone Peak Resources	TVD Reference:	23' KB @ 4924.00usft (Original Well Elev)
Project:	DJ BASIN	MD Reference:	23' KB @ 4924.00usft (Original Well Elev)
Site:	S21-T2N-R68W	North Reference:	True
Well:	DREAM WEAVER North 3G-21H-N268	Survey Calculation Method:	Minimum Curvature
Wellbore:	OH		
Design:	PLAN #1		

Planned Survey

Measured Depth (usft)	Inclination (°)	Azimuth (°)	Vertical Depth (usft)	+N/-S (usft)	+E/-W (usft)	Vertical Section (usft)	Dogleg Rate (°/100usft)	Build Rate (°/100u)	Comments / Formations
5,100.00	8.21	198.93	5,058.77	-552.90	-189.62	-546.69	0.00	0.00	
5,200.00	8.21	198.93	5,157.75	-566.41	-194.25	-560.04	0.00	0.00	
5,300.00	8.21	198.93	5,256.73	-579.91	-198.88	-573.39	0.00	0.00	
5,400.00	8.21	198.93	5,355.70	-593.41	-203.51	-586.74	0.00	0.00	
5,500.00	8.21	198.93	5,454.68	-606.91	-208.14	-600.08	0.00	0.00	
5,600.00	8.21	198.93	5,553.65	-620.41	-212.77	-613.43	0.00	0.00	
5,700.00	8.21	198.93	5,652.63	-633.91	-217.40	-626.78	0.00	0.00	
5,800.00	8.21	198.93	5,751.61	-647.41	-222.03	-640.13	0.00	0.00	
5,900.00	8.21	198.93	5,850.58	-660.91	-226.67	-653.48	0.00	0.00	
6,000.00	8.21	198.93	5,949.56	-674.42	-231.30	-666.83	0.00	0.00	
6,100.00	8.21	198.93	6,048.53	-687.92	-235.93	-680.18	0.00	0.00	
6,200.00	8.21	198.93	6,147.51	-701.42	-240.56	-693.53	0.00	0.00	
6,300.00	8.21	198.93	6,246.49	-714.92	-245.19	-706.88	0.00	0.00	
6,400.00	8.21	198.93	6,345.46	-728.42	-249.82	-720.23	0.00	0.00	
6,500.00	8.21	198.93	6,444.44	-741.92	-254.45	-733.58	0.00	0.00	
6,600.00	8.21	198.93	6,543.42	-755.42	-259.08	-746.93	0.00	0.00	
6,651.31	8.21	198.93	6,594.20	-762.35	-261.45	-753.78	0.00	0.00	
6,700.00	4.71	214.89	6,642.58	-767.28	-263.73	-758.63	8.00	-7.17	
6,800.00	4.96	326.50	6,742.38	-767.04	-268.47	-758.25	8.00	0.25	
6,900.00	12.45	347.26	6,841.18	-752.90	-273.24	-743.97	8.00	7.49	
7,000.00	20.33	352.32	6,937.05	-725.14	-277.94	-716.06	8.00	7.88	
7,100.00	28.27	354.62	7,028.12	-684.28	-282.49	-675.09	8.00	7.95	
7,200.00	36.24	355.97	7,112.62	-631.13	-286.79	-621.83	8.00	7.97	
7,300.00	44.22	356.89	7,188.91	-566.72	-290.76	-557.33	8.00	7.98	
7,400.00	52.20	357.58	7,255.50	-492.31	-294.33	-482.84	8.00	7.98	
7,500.00	60.19	358.13	7,311.09	-409.35	-297.41	-399.82	8.00	7.99	
7,600.00	68.18	358.60	7,354.61	-319.44	-299.97	-309.88	8.00	7.99	
7,700.00	76.17	359.02	7,385.20	-224.34	-301.93	-214.76	8.00	7.99	
7,800.00	84.16	359.41	7,402.27	-125.90	-303.27	-116.33	8.00	7.99	
7,873.12	90.00	359.69	7,406.00	-52.90	-303.84	-43.35	8.00	7.99	DREAM WEAVER North 3G-21H-N268 TPZ
7,900.00	90.00	359.69	7,406.00	-26.03	-303.98	-16.48	0.00	0.00	
8,000.00	90.00	359.69	7,406.00	73.97	-304.52	83.48	0.00	0.00	
8,100.00	90.00	359.69	7,406.00	173.97	-305.06	183.45	0.00	0.00	
8,200.00	90.00	359.69	7,406.00	273.97	-305.60	283.41	0.00	0.00	
8,300.00	90.00	359.69	7,406.00	373.97	-306.13	383.38	0.00	0.00	
8,400.00	90.00	359.69	7,406.00	473.97	-306.67	483.35	0.00	0.00	
8,500.00	90.00	359.69	7,406.00	573.96	-307.21	583.31	0.00	0.00	
8,600.00	90.00	359.69	7,406.00	673.96	-307.75	683.28	0.00	0.00	
8,700.00	90.00	359.69	7,406.00	773.96	-308.28	783.25	0.00	0.00	
8,800.00	90.00	359.69	7,406.00	873.96	-308.82	883.21	0.00	0.00	
8,900.00	90.00	359.69	7,406.00	973.96	-309.36	983.18	0.00	0.00	
9,000.00	90.00	359.69	7,406.00	1,073.96	-309.90	1,083.14	0.00	0.00	
9,100.00	90.00	359.69	7,406.00	1,173.96	-310.43	1,183.11	0.00	0.00	
9,200.00	90.00	359.69	7,406.00	1,273.95	-310.97	1,283.08	0.00	0.00	
9,300.00	90.00	359.69	7,406.00	1,373.95	-311.51	1,383.04	0.00	0.00	
9,400.00	90.00	359.69	7,406.00	1,473.95	-312.05	1,483.01	0.00	0.00	
9,500.00	90.00	359.69	7,406.00	1,573.95	-312.58	1,582.98	0.00	0.00	
9,600.00	90.00	359.69	7,406.00	1,673.95	-313.12	1,682.94	0.00	0.00	
9,700.00	90.00	359.69	7,406.00	1,773.95	-313.66	1,782.91	0.00	0.00	
9,800.00	90.00	359.69	7,406.00	1,873.95	-314.20	1,882.87	0.00	0.00	
9,900.00	90.00	359.69	7,406.00	1,973.94	-314.73	1,982.84	0.00	0.00	
10,000.00	90.00	359.69	7,406.00	2,073.94	-315.27	2,082.81	0.00	0.00	

Cathedral Energy Services

Planning Report

Database:	USA EDM 5000 Multi Users DB	Local Co-ordinate Reference:	Well DREAM WEAVER North 3G-21H-N268 - SI
Company:	Crestone Peak Resources	TVD Reference:	23' KB @ 4924.00usft (Original Well Elev)
Project:	DJ BASIN	MD Reference:	23' KB @ 4924.00usft (Original Well Elev)
Site:	S21-T2N-R68W	North Reference:	True
Well:	DREAM WEAVER North 3G-21H-N268	Survey Calculation Method:	Minimum Curvature
Wellbore:	OH		
Design:	PLAN #1		

Planned Survey

Measured Depth (usft)	Inclination (°)	Azimuth (°)	Vertical Depth (usft)	+N/-S (usft)	+E/-W (usft)	Vertical Section (usft)	Dogleg Rate (°/100usft)	Build Rate (°/100u)	Comments / Formations
10,100.00	90.00	359.69	7,406.00	2,173.94	-315.81	2,182.77	0.00	0.00	
10,200.00	90.00	359.69	7,406.00	2,273.94	-316.35	2,282.74	0.00	0.00	
10,300.00	90.00	359.69	7,406.00	2,373.94	-316.88	2,382.71	0.00	0.00	
10,400.00	90.00	359.69	7,406.00	2,473.94	-317.42	2,482.67	0.00	0.00	
10,500.00	90.00	359.69	7,406.00	2,573.94	-317.96	2,582.64	0.00	0.00	
10,600.00	90.00	359.69	7,406.00	2,673.93	-318.50	2,682.60	0.00	0.00	
10,700.00	90.00	359.69	7,406.00	2,773.93	-319.03	2,782.57	0.00	0.00	
10,800.00	90.00	359.69	7,406.00	2,873.93	-319.57	2,882.54	0.00	0.00	
10,900.00	90.00	359.69	7,406.00	2,973.93	-320.11	2,982.50	0.00	0.00	
11,000.00	90.00	359.69	7,406.00	3,073.93	-320.65	3,082.47	0.00	0.00	
11,100.00	90.00	359.69	7,406.00	3,173.93	-321.18	3,182.44	0.00	0.00	
11,200.00	90.00	359.69	7,406.00	3,273.92	-321.72	3,282.40	0.00	0.00	
11,300.00	90.00	359.69	7,406.00	3,373.92	-322.26	3,382.37	0.00	0.00	
11,400.00	90.00	359.69	7,406.00	3,473.92	-322.80	3,482.33	0.00	0.00	
11,500.00	90.00	359.69	7,406.00	3,573.92	-323.33	3,582.30	0.00	0.00	
11,600.00	90.00	359.69	7,406.00	3,673.92	-323.87	3,682.27	0.00	0.00	
11,700.00	90.00	359.69	7,406.00	3,773.92	-324.41	3,782.23	0.00	0.00	
11,800.00	90.00	359.69	7,406.00	3,873.92	-324.95	3,882.20	0.00	0.00	
11,900.00	90.00	359.69	7,406.00	3,973.91	-325.48	3,982.17	0.00	0.00	
12,000.00	90.00	359.69	7,406.00	4,073.91	-326.02	4,082.13	0.00	0.00	
12,100.00	90.00	359.69	7,406.00	4,173.91	-326.56	4,182.10	0.00	0.00	
12,200.00	90.00	359.69	7,406.00	4,273.91	-327.10	4,282.06	0.00	0.00	
12,300.00	90.00	359.69	7,406.00	4,373.91	-327.63	4,382.03	0.00	0.00	
12,400.00	90.00	359.69	7,406.00	4,473.91	-328.17	4,482.00	0.00	0.00	
12,500.00	90.00	359.69	7,406.00	4,573.91	-328.71	4,581.96	0.00	0.00	
12,600.00	90.00	359.69	7,406.00	4,673.90	-329.25	4,681.93	0.00	0.00	
12,700.00	90.00	359.69	7,406.00	4,773.90	-329.78	4,781.90	0.00	0.00	
12,800.00	90.00	359.69	7,406.00	4,873.90	-330.32	4,881.86	0.00	0.00	
12,900.00	90.00	359.69	7,406.00	4,973.90	-330.86	4,981.83	0.00	0.00	
13,000.00	90.00	359.69	7,406.00	5,073.90	-331.40	5,081.79	0.00	0.00	
13,100.00	90.00	359.69	7,406.00	5,173.90	-331.93	5,181.76	0.00	0.00	
13,200.00	90.00	359.69	7,406.00	5,273.90	-332.47	5,281.73	0.00	0.00	
13,300.00	90.00	359.69	7,406.00	5,373.89	-333.01	5,381.69	0.00	0.00	
13,400.00	90.00	359.69	7,406.00	5,473.89	-333.55	5,481.66	0.00	0.00	
13,500.00	90.00	359.69	7,406.00	5,573.89	-334.08	5,581.63	0.00	0.00	
13,600.00	90.00	359.69	7,406.00	5,673.89	-334.62	5,681.59	0.00	0.00	
13,700.00	90.00	359.69	7,406.00	5,773.89	-335.16	5,781.56	0.00	0.00	
13,800.00	90.00	359.69	7,406.00	5,873.89	-335.70	5,881.52	0.00	0.00	
13,900.00	90.00	359.69	7,406.00	5,973.89	-336.23	5,981.49	0.00	0.00	
14,000.00	90.00	359.69	7,406.00	6,073.88	-336.77	6,081.46	0.00	0.00	
14,100.00	90.00	359.69	7,406.00	6,173.88	-337.31	6,181.42	0.00	0.00	
14,200.00	90.00	359.69	7,406.00	6,273.88	-337.85	6,281.39	0.00	0.00	
14,300.00	90.00	359.69	7,406.00	6,373.88	-338.38	6,381.36	0.00	0.00	
14,400.00	90.00	359.69	7,406.00	6,473.88	-338.92	6,481.32	0.00	0.00	
14,500.00	90.00	359.69	7,406.00	6,573.88	-339.46	6,581.29	0.00	0.00	
14,600.00	90.00	359.69	7,406.00	6,673.88	-340.00	6,681.25	0.00	0.00	
14,700.00	90.00	359.69	7,406.00	6,773.87	-340.53	6,781.22	0.00	0.00	
14,800.00	90.00	359.69	7,406.00	6,873.87	-341.07	6,881.19	0.00	0.00	
14,900.00	90.00	359.69	7,406.00	6,973.87	-341.61	6,981.15	0.00	0.00	
15,000.00	90.00	359.69	7,406.00	7,073.87	-342.15	7,081.12	0.00	0.00	
15,100.00	90.00	359.69	7,406.00	7,173.87	-342.68	7,181.09	0.00	0.00	
15,200.00	90.00	359.69	7,406.00	7,273.87	-343.22	7,281.05	0.00	0.00	

Cathedral Energy Services

Planning Report

Database:	USA EDM 5000 Multi Users DB	Local Co-ordinate Reference:	Well DREAM WEAVER North 3G-21H-N268 - SI
Company:	Crestone Peak Resources	TVD Reference:	23' KB @ 4924.00usft (Original Well Elev)
Project:	DJ BASIN	MD Reference:	23' KB @ 4924.00usft (Original Well Elev)
Site:	S21-T2N-R68W	North Reference:	True
Well:	DREAM WEAVER North 3G-21H-N268	Survey Calculation Method:	Minimum Curvature
Wellbore:	OH		
Design:	PLAN #1		

Planned Survey									
Measured Depth (usft)	Inclination (°)	Azimuth (°)	Vertical Depth (usft)	+N/-S (usft)	+E/-W (usft)	Vertical Section (usft)	Dogleg Rate (°/100usft)	Build Rate (°/100u)	Comments / Formations
15,300.00	90.00	359.69	7,406.00	7,373.87	-343.76	7,381.02	0.00	0.00	
15,400.00	90.00	359.69	7,406.00	7,473.86	-344.30	7,480.98	0.00	0.00	
15,500.00	90.00	359.69	7,406.00	7,573.86	-344.83	7,580.95	0.00	0.00	
15,600.00	90.00	359.69	7,406.00	7,673.86	-345.37	7,680.92	0.00	0.00	
15,700.00	90.00	359.69	7,406.00	7,773.86	-345.91	7,780.88	0.00	0.00	
15,800.00	90.00	359.69	7,406.00	7,873.86	-346.45	7,880.85	0.00	0.00	
15,900.00	90.00	359.69	7,406.00	7,973.86	-346.98	7,980.82	0.00	0.00	
16,000.00	90.00	359.69	7,406.00	8,073.86	-347.52	8,080.78	0.00	0.00	
16,100.00	90.00	359.69	7,406.00	8,173.85	-348.06	8,180.75	0.00	0.00	
16,200.00	90.00	359.69	7,406.00	8,273.85	-348.60	8,280.71	0.00	0.00	
16,300.00	90.00	359.69	7,406.00	8,373.85	-349.13	8,380.68	0.00	0.00	
16,400.00	90.00	359.69	7,406.00	8,473.85	-349.67	8,480.65	0.00	0.00	
16,500.00	90.00	359.69	7,406.00	8,573.85	-350.21	8,580.61	0.00	0.00	
16,600.00	90.00	359.69	7,406.00	8,673.85	-350.75	8,680.58	0.00	0.00	
16,700.00	90.00	359.69	7,406.00	8,773.85	-351.28	8,780.55	0.00	0.00	
16,800.00	90.00	359.69	7,406.00	8,873.84	-351.82	8,880.51	0.00	0.00	
16,900.00	90.00	359.69	7,406.00	8,973.84	-352.36	8,980.48	0.00	0.00	
17,000.00	90.00	359.69	7,406.00	9,073.84	-352.90	9,080.44	0.00	0.00	
17,100.00	90.00	359.69	7,406.00	9,173.84	-353.43	9,180.41	0.00	0.00	
17,200.00	90.00	359.69	7,406.00	9,273.84	-353.97	9,280.38	0.00	0.00	
17,300.00	90.00	359.69	7,406.00	9,373.84	-354.51	9,380.34	0.00	0.00	
17,400.00	90.00	359.69	7,406.00	9,473.84	-355.05	9,480.31	0.00	0.00	
17,500.00	90.00	359.69	7,406.00	9,573.83	-355.58	9,580.28	0.00	0.00	
17,600.00	90.00	359.69	7,406.00	9,673.83	-356.12	9,680.24	0.00	0.00	
17,700.00	90.00	359.69	7,406.00	9,773.83	-356.66	9,780.21	0.00	0.00	
17,800.00	90.00	359.69	7,406.00	9,873.83	-357.20	9,880.17	0.00	0.00	
17,900.00	90.00	359.69	7,406.00	9,973.83	-357.73	9,980.14	0.00	0.00	
18,000.00	90.00	359.69	7,406.00	10,073.83	-358.27	10,080.11	0.00	0.00	
18,100.00	90.00	359.69	7,406.00	10,173.83	-358.81	10,180.07	0.00	0.00	
18,200.00	90.00	359.69	7,406.00	10,273.82	-359.35	10,280.04	0.00	0.00	
18,300.00	90.00	359.69	7,406.00	10,373.82	-359.88	10,380.01	0.00	0.00	
18,400.00	90.00	359.69	7,406.00	10,473.82	-360.42	10,479.97	0.00	0.00	
18,500.00	90.00	359.69	7,406.00	10,573.82	-360.96	10,579.94	0.00	0.00	
18,600.00	90.00	359.69	7,406.00	10,673.82	-361.50	10,679.90	0.00	0.00	
18,700.00	90.00	359.69	7,406.00	10,773.82	-362.03	10,779.87	0.00	0.00	
18,800.00	90.00	359.69	7,406.00	10,873.82	-362.57	10,879.84	0.00	0.00	
18,900.00	90.00	359.69	7,406.00	10,973.81	-363.11	10,979.80	0.00	0.00	
19,000.00	90.00	359.69	7,406.00	11,073.81	-363.65	11,079.77	0.00	0.00	
19,100.00	90.00	359.69	7,406.00	11,173.81	-364.18	11,179.74	0.00	0.00	
19,200.00	90.00	359.69	7,406.00	11,273.81	-364.72	11,279.70	0.00	0.00	
19,300.00	90.00	359.69	7,406.00	11,373.81	-365.26	11,379.67	0.00	0.00	
19,400.00	90.00	359.69	7,406.00	11,473.81	-365.80	11,479.63	0.00	0.00	
19,500.00	90.00	359.69	7,406.00	11,573.81	-366.33	11,579.60	0.00	0.00	
19,600.00	90.00	359.69	7,406.00	11,673.80	-366.87	11,679.57	0.00	0.00	
19,625.69	90.00	359.69	7,406.00	11,699.49	-367.01	11,705.24	0.00	0.00	DREAM WEAVER North 3G-21H-N268 BHL

Cathedral Energy Services

Planning Report

Database:	USA EDM 5000 Multi Users DB	Local Co-ordinate Reference:	Well DREAM WEAVER North 3G-21H-N268 - SI
Company:	Crestone Peak Resources	TVD Reference:	23' KB @ 4924.00usft (Original Well Elev)
Project:	DJ BASIN	MD Reference:	23' KB @ 4924.00usft (Original Well Elev)
Site:	S21-T2N-R68W	North Reference:	True
Well:	DREAM WEAVER North 3G-21H-N268	Survey Calculation Method:	Minimum Curvature
Wellbore:	OH		
Design:	PLAN #1		

Targets									
Target Name									
- hit/miss target	Dip Angle	Dip Dir.	TVD	+N/-S	+E/-W	Northing	Easting	Latitude	Longitude
- Shape	(°)	(°)	(usft)	(usft)	(usft)	(usft)	(usft)		
DREAM WEAVER North	0.00	0.00	7,406.00	-52.90	-303.84	1,286,844.33	3,136,388.76	40.119751	-105.012306
- plan hits target center									
- Point									
DREAM WEAVER North	0.00	0.00	7,406.00	11,699.49	-367.01	1,298,596.20	3,136,260.82	40.152013	-105.012532
- plan hits target center									
- Point									