

Crestone Peak Resources

DJ BASIN

S21-T2N-R68W

DREAM WEAVER North 3E-21H-N268

OH

PLAN #1

Anticollision Summary Report

23 May, 2018

Cathedral Energy Services

Anticollision Summary Report

Company:	Crestone Peak Resources	Local Co-ordinate Reference:	Well DREAM WEAVER North 3E-21H-N268 - Slot DREAM WEAVER North 3E-21H-N268 SHL
Project:	DJ BASIN	TVD Reference:	23' KB @ 4924.00usft (Original Well Elev)
Reference Site:	S21-T2N-R68W	MD Reference:	23' KB @ 4924.00usft (Original Well Elev)
Site Error:	0.00 usft	North Reference:	True
Reference Well:	DREAM WEAVER North 3E-21H-N268	Survey Calculation Method:	Minimum Curvature
Well Error:	0.00 usft	Output errors are at	2.00 sigma
Reference Wellbore	OH	Database:	USA EDM 5000 Multi Users DB
Reference Design:	PLAN #1	Offset TVD Reference:	Offset Datum

Reference	PLAN #1		
Filter type:	NO GLOBAL FILTER: Using user defined selection & filtering criteria		
Interpolation Method:	MD Interval 100.00usft	Error Model:	ISCWSA
Depth Range:	Unlimited	Scan Method:	Closest Approach 3D
Results Limited by:	Maximum center-center distance of 1,933.21 usft	Error Surface:	Pedal Curve
Warning Levels Evaluated at:	2.00 Sigma	Casing Method:	Not applied

Survey Tool Program	Date	5/23/2018		
From (usft)	To (usft)	Survey (Wellbore)	Tool Name	Description
0.00	600.00	PLAN #1 (OH)	VESSI_GYROFLEX	VESSI Gyroflex Gyro
2,001.00	19,573.95	PLAN #1 (OH)	MWD+HDGM	OWSG MWD + HDGM

Summary						
Site Name	Reference Measured Depth (usft)	Offset Measured Depth (usft)	Distance Between Centres (usft)	Distance Between Ellipses (usft)	Separation Factor	Warning
Offset Well - Wellbore - Design						
S21-T2N-R68W						
DREAM WEAVER North 3A-21H-N268 - OH - PLAN #1	200.00	200.00	48.57	48.08	99.059	CC, ES
DREAM WEAVER North 3A-21H-N268 - OH - PLAN #1	19,573.95	19,716.53	984.45	603.82	2.586	SF
DREAM WEAVER North 3B-21H-N268 - OH - PLAN #3	384.22	384.23	36.41	35.27	31.935	CC
DREAM WEAVER North 3B-21H-N268 - OH - PLAN #3	400.00	400.00	36.41	35.22	30.459	ES
DREAM WEAVER North 3B-21H-N268 - OH - PLAN #3	19,573.95	19,884.15	694.30	326.98	1.890	SF
DREAM WEAVER North 3C-21H-N268 - OH - PLAN #2	503.03	503.06	24.21	22.66	15.533	CC, ES
DREAM WEAVER North 3C-21H-N268 - OH - PLAN #2	19,573.95	19,630.38	674.27	287.49	1.743	SF
DREAM WEAVER North 3D-21H-N268 - OH - PLAN #1	619.18	619.23	11.85	9.89	6.034	CC
DREAM WEAVER North 3D-21H-N268 - OH - PLAN #1	19,456.64	19,562.49	282.32	-80.56	0.778	Level 1, ES, SF
DREAM WEAVER North 3F-21H-N268 - OH - PLAN #1	756.78	756.69	11.48	9.04	4.699	CC
DREAM WEAVER North 3F-21H-N268 - OH - PLAN #1	800.00	799.88	11.60	9.01	4.477	ES
DREAM WEAVER North 3F-21H-N268 - OH - PLAN #1	19,573.95	19,786.79	236.29	25.87	1.123	Level 2, SF
DREAM WEAVER North 3G-21H-N268 - OH - PLAN #1	810.15	809.96	22.90	20.27	8.706	CC
DREAM WEAVER North 3G-21H-N268 - OH - PLAN #1	18,600.00	18,652.46	227.08	-107.71	0.678	Level 1, SF
DREAM WEAVER North 3G-21H-N268 - OH - PLAN #1	18,700.00	18,752.39	230.39	-108.04	0.681	Level 1, ES
DREAM WEAVER North 3J-21H-N268 - OH - PLAN #1	863.70	863.33	34.35	31.53	12.190	CC, ES
DREAM WEAVER North 3H-21H-N268 - OH - PLAN #1	18,700.00	18,648.96	542.81	183.38	1.510	SF
DREAM WEAVER North 3I-21H-N268 - OH - PLAN #1	200.00	200.00	48.57	48.08	99.060	CC, ES
DREAM WEAVER North 3I-21H-N268 - OH - PLAN #1	19,573.95	19,633.61	964.30	577.45	2.493	SF
DREAM WEAVER North 3J-21H-N268 - OH - PLAN #1	200.00	200.00	60.71	60.22	123.824	CC, ES
DREAM WEAVER North 3J-21H-N268 - OH - PLAN #1	19,573.95	19,750.41	1,270.54	888.15	3.323	SF
DREAM WEAVER North 3K-21H-N268 - OH - PLAN #1	200.00	200.00	72.86	72.37	148.589	CC, ES
DREAM WEAVER North 3K-21H-N268 - OH - PLAN #1	19,573.95	19,528.85	1,339.32	952.05	3.458	SF
DREAM WEAVER South 3A-21H-N268 - OH - PLAN #1	685.23	693.13	33.02	30.78	14.742	CC, ES
DREAM WEAVER South 3A-21H-N268 - OH - PLAN #1	700.00	707.45	33.27	30.98	14.511	SF
DREAM WEAVER South 3B-21H-N268 - OH - PLAN #2	765.80	775.44	34.72	32.17	13.655	CC, ES
DREAM WEAVER South 3B-21H-N268 - OH - PLAN #2	8,600.00	7,318.59	572.30	521.44	11.252	SF
DREAM WEAVER South 3C-21H-N268 - OH - PLAN #1	826.24	837.32	52.12	49.37	18.939	CC, ES
DREAM WEAVER South 3C-21H-N268 - OH - PLAN #1	8,300.00	7,391.81	425.99	379.76	9.215	SF
DREAM WEAVER South 3D-21H-N268 - OH - PLAN #1	922.70	933.74	53.17	50.09	17.262	CC, ES
DREAM WEAVER South 3D-21H-N268 - OH - PLAN #1	8,203.69	7,511.93	132.32	86.73	2.902	SF
DREAM WEAVER South 3E-21H-N268 - OH - PLAN #1	1,229.21	1,238.33	93.06	88.93	22.542	CC, ES
DREAM WEAVER South 3E-21H-N268 - OH - PLAN #1	7,586.82	8,022.14	172.68	128.65	3.922	SF
DREAM WEAVER South 3F-21H-N268 - OH - PLAN #1	1,050.93	1,061.31	74.40	70.88	21.149	CC, ES

CC - Min centre to center distance or covergent point, SF - min separation factor, ES - min ellipse separation

Cathedral Energy Services

Anticollision Summary Report

Company:	Crestone Peak Resources	Local Co-ordinate Reference:	Well DREAM WEAVER North 3E-21H-N268 - Slot DREAM WEAVER North 3E-21H-N268 SHL
Project:	DJ BASIN	TVD Reference:	23' KB @ 4924.00usft (Original Well Elev)
Reference Site:	S21-T2N-R68W	MD Reference:	23' KB @ 4924.00usft (Original Well Elev)
Site Error:	0.00 usft	North Reference:	True
Reference Well:	DREAM WEAVER North 3E-21H-N268	Survey Calculation Method:	Minimum Curvature
Well Error:	0.00 usft	Output errors are at	2.00 sigma
Reference Wellbore	OH	Database:	USA EDM 5000 Multi Users DB
Reference Design:	PLAN #1	Offset TVD Reference:	Offset Datum

Summary						
Site Name Offset Well - Wellbore - Design	Reference Measured Depth (usft)	Offset Measured Depth (usft)	Distance Between Centres (usft)	Distance Between Ellipses (usft)	Separation Factor	Warning
S21-T2N-R68W						
DREAM WEAVER South 3F-21H-N268 - OH - PLAN #1	8,307.83	7,459.53	330.75	284.66	7.175	SF
DREAM WEAVER South 3G-21H-N268 - OH - PLAN #1	1,227.67	1,234.87	108.42	104.29	26.290	CC, ES
DREAM WEAVER South 3G-21H-N268 - OH - PLAN #1	8,200.00	7,481.64	518.50	473.81	11.601	SF
DREAM WEAVER South 3H-21H-N268 - OH - PLAN #1	1,117.65	1,124.49	130.59	126.86	34.976	CC, ES
DREAM WEAVER South 3H-21H-N268 - OH - PLAN #1	7,300.00	8,249.43	817.42	772.74	18.293	SF
DREAM WEAVER South 3I-21H-N268 - OH - PLAN #2	1,004.22	1,009.50	156.99	153.66	47.122	CC, ES
DREAM WEAVER South 3I-21H-N268 - OH - PLAN #2	8,500.00	7,240.81	1,191.85	1,145.35	25.633	SF
DREAM WEAVER South 3J-21H-N268 - OH - PLAN #2	923.23	927.94	175.00	171.95	57.420	CC, ES
DREAM WEAVER South 3J-21H-N268 - OH - PLAN #2	8,700.00	7,190.13	1,366.68	1,317.86	27.996	SF
DREAM WEAVER South 3K-21H-N268 - OH - PLAN #2	824.72	829.05	192.55	189.84	71.121	CC, ES
DREAM WEAVER South 3K-21H-N268 - OH - PLAN #2	8,800.00	7,018.80	1,580.33	1,531.93	32.652	SF

Cathedral Energy Services

Anticollision Summary Report

Company:	Crestone Peak Resources	Local Co-ordinate Reference:	Well DREAM WEAVER North 3E-21H-N268 - Slot DREAM WEAVER North 3E-21H-N268 SHL
Project:	DJ BASIN	TVD Reference:	23' KB @ 4924.00usft (Original Well Elev)
Reference Site:	S21-T2N-R68W	MD Reference:	23' KB @ 4924.00usft (Original Well Elev)
Site Error:	0.00 usft	North Reference:	True
Reference Well:	DREAM WEAVER North 3E-21H-N268	Survey Calculation Method:	Minimum Curvature
Well Error:	0.00 usft	Output errors are at	2.00 sigma
Reference Wellbore	OH	Database:	USA EDM 5000 Multi Users DB
Reference Design:	PLAN #1	Offset TVD Reference:	Offset Datum

Summary						
Site Name Offset Well - Wellbore - Design	Reference Measured Depth (usft)	Offset Measured Depth (usft)	Distance Between Centres (usft)	Distance Between Ellipses (usft)	Separation Factor	Warning
S21-T2N-R68W (OFFSETS)						
ARTHUR STROMQUIST 2 - KMG WELL - GYRO	10,151.89	7,287.76	533.41	472.00	8.687	CC, ES
ARTHUR STROMQUIST 2 - KMG WELL - GYRO	10,200.00	7,288.95	535.57	473.33	8.604	SF
BLISS 41-21 - KPK WELL - SURVEYS						Out of range
BOULDER CREEK 9-4K8 - SNYDER OIL - NO SURVEY						Out of range
BROWN C UNIT 1 - CPR WELL - GYRO						Out of range
CANINO 1 - HUGHES C W-SOTEXCO 1 - NO SURVEY						Out of range
CHAMPLIN 41-4/1-68/ 1 - KMG WELL - NO SURVEYS						Out of range
CHAMPLIN 86 AMOCO B 2 - KPK WELL - NO SURVEY						Out of range
CHAMPLIN 86 AMOCO UT/Q 1 - KMG WELL - GYRO						Out of range
CHAMPLIN 86 AMOCO-B 1 - KPK WELL - NO SURVEY						Out of range
CHAMPLIN 86 AMOCO-B 3 - KPK WELL - NO SURVEY						Out of range
CHAMPLIN 86 AMOCO-B 4 - KPK WELL - NO SURVEY						Out of range
CHAMPLIN 86 AMOCO-B 5 - KPK WELL - NO SURVEY						Out of range
CHAMPLIN 86 AMOCO-B 6 - KPK WELL - NO SURVEY						Out of range
CHAMPLIN 86 AMOCO-F 5 - KPK WELL - NO SURVEY						Out of range
CHAMPLIN 86 AMOCO-O 9 - KMG WELL - GYRO						Out of range
CHAMPLIN32-4/1-68/ 2 - KMG WELL - NO SURVEYS						Out of range
CHMPLN 86 AMOCO-F 1 - KPK WELL - NO SURVEYS						Out of range
COLCLASURE 42-21 - KPK WELL - NO SURVEYS						Out of range
COOLEY 11-16 - KMG WELL - SURVEYS	14,160.08	7,495.45	997.28	863.10	7.432	CC, ES
COOLEY 11-16 - KMG WELL - SURVEYS	14,200.00	7,497.17	998.08	863.51	7.417	SF
COOLEY 12-16 - KMG WELL - SURVEYS	14,044.38	7,459.75	311.20	180.47	2.381	CC, ES, SF
COOLEY 13-16 - KMG WELL - SURVEYS	12,600.01	7,369.14	464.66	361.30	4.495	CC, ES, SF
COOLEY 14-16 - KMG WELL - SURVEYS	12,600.79	7,454.13	1,113.54	1,009.52	10.705	CC, ES, SF
COOLEY 22-16 - KMG WELL - SURVEYS	14,700.00	7,532.40	279.19	129.58	1.866	ES, SF
COOLEY 22-16 - KMG WELL - SURVEYS	14,702.91	7,532.42	279.18	129.62	1.867	CC
COOLEY 23-16 - KMG WELL - SURVEYS	13,380.48	7,492.87	1,605.39	1,488.71	13.759	CC
COOLEY 23-16 - KMG WELL - SURVEYS	13,400.00	7,492.67	1,605.51	1,488.49	13.720	ES
COOLEY 23-16 - KMG WELL - SURVEYS	13,600.00	7,490.56	1,620.32	1,500.48	13.520	SF
COOLEY 35-16 - KMG WELL - SURVEYS	12,169.01	7,378.46	340.48	239.75	3.380	CC, ES, SF
COPPER 31-15 - KMG WELL - SURVEYS						Out of range
CPC 31-4 (1-68) 3 - ANADARKO WELL - NO SURVEYS						Out of range
CPC 42-4 (1-68) 4 - ANADARKO WELL - NO SURVEYS						Out of range
DOMENICO 1 - NOBLE WELL - GYRO						Out of range
DUCKWORTH 31-16 - CPR WELL - GYRO						Out of range
DUCKWORTH 32-16 - CPR WELL - SURVEYS						Out of range
DUCKWORTH 33-16 - CPR WELL - SURVEYS						Out of range
DUCKWORTH 41-16 - CPR WELL - SURVEYS						Out of range
DUCKWORTH 43-16 - CPR WELL - GYRO						Out of range
DUCKWORTH 44-16 - CPR WELL - SURVEYS						Out of range
DUCKWORTH 6-0-16 - CPR WELL - SURVEYS						Out of range
DUCKWORTH B UNIT 1 - CPR WELL - GYRO						Out of range
DUCKWORTH B UNIT 2 - CPR WELL - GYRO						Out of range
EAST RINN 0-4-15 - CPR WELL - SURVEYS						Out of range
EAST RINN 13-15 - CPR WELL - SURVEYS						Out of range
EDITH ANN 1 - CPR WELL - GYRO						Out of range
EDITH ANN 33-21 - CPR WELL - GYRO	0.00	0.00	1,691.77			
EDITH ANN 33-21 - CPR WELL - GYRO	610.34	610.13	1,692.45	1,690.52	877.789	ES
EDITH ANN 33-21 - CPR WELL - GYRO	2,300.00	2,285.51	1,922.86	1,915.27	253.195	SF
EDITH ANN 34-21 - CPR WELL - GYRO	742.60	759.83	1,429.20	1,426.77	588.418	CC
EDITH ANN 34-21 - CPR WELL - GYRO	800.00	820.30	1,429.33	1,426.70	542.253	ES

CC - Min centre to center distance or convergent point, SF - min separation factor, ES - min ellipse separation

Cathedral Energy Services

Anticollision Summary Report

Company:	Crestone Peak Resources	Local Co-ordinate Reference:	Well DREAM WEAVER North 3E-21H-N268 - Slot DREAM WEAVER North 3E-21H-N268 SHL
Project:	DJ BASIN	TVD Reference:	23' KB @ 4924.00usft (Original Well Elev)
Reference Site:	S21-T2N-R68W	MD Reference:	23' KB @ 4924.00usft (Original Well Elev)
Site Error:	0.00 usft	North Reference:	True
Reference Well:	DREAM WEAVER North 3E-21H-N268	Survey Calculation Method:	Minimum Curvature
Well Error:	0.00 usft	Output errors are at	2.00 sigma
Reference Wellbore	OH	Database:	USA EDM 5000 Multi Users DB
Reference Design:	PLAN #1	Offset TVD Reference:	Offset Datum

Summary						
Site Name Offset Well - Wellbore - Design	Reference Measured Depth (usft)	Offset Measured Depth (usft)	Distance Between Centres (usft)	Distance Between Ellipses (usft)	Separation Factor	Warning
S21-T2N-R68W (OFFSETS)						
EDITH ANN 34-21 - CPR WELL - GYRO	7,000.00	6,897.73	1,932.54	1,900.60	60.500	SF
EDITH ANN 4-21 - CPR WELL - SURVEYS						Out of range
EDITH ANN 44-21 - CPR WELL - GYRO						Out of range
EDITH ANN 6-8-21 - CPR WELL - SURVEYS						Out of range
EDITH ANN 8-8-21 - CPR WELL - SURVEYS						Out of range
EDITH ANN-DUCKWORTH 4A-21H-O268 - CPR - FINAL	16,900.00	17,130.00	1,607.18	1,281.61	4.937	SF
EDITH ANN-DUCKWORTH 4A-21H-O268 - CPR - FINAL	16,984.46	17,130.00	1,604.96	1,279.94	4.938	CC, ES
EDITH ANN-DUCKWORTH 4B-21H-O268 - CPR - FINAL						Out of range
EDITH ANN-DUCKWORTH 4C-21H-O268 - CPR - FINA						Out of range
EDITH ANN-DUCKWORTH 4D-21H-O268 - CPR - FINA						Out of range
EDITH ANN-DUCKWORTH 4E-21H-O268 - CPR - FINAL						Out of range
EDITH ANN-DUCKWORTH 4F-21H-O268 - CPR - FINAL						Out of range
EDITH ANN-DUCKWORTH 4G-21H-O268 - CPR - FINA						Out of range
EDITH ANN-DUCKWORTH 4H-21H-O268 - CPR - FINA						Out of range
ERIE CORP 42-4 - KMG WELL - NO SURVEYS						Out of range
EVERIST 12-10 - KMG WELL - SURVEYS						Out of range
EVERIST 12-10X - KMG WELL - NO SURVEYS						Out of range
EVERIST 13-10 - KMG WELL - SURVEYS						Out of range
EVERIST 33-10 - KMG WELL - SURVEYS						Out of range
FAIRVIEW 1 - EXTRACTION WELL - NO SURVEYS						Out of range
FAIRVIEW 3 - EXTRACTION O&G LLC - SURVEYS						Out of range
FAIRVIEW 4 - EXTRACTION O&G LLC - SURVEYS						Out of range
FAIRVIEW 5 - EXTRACTION O&G LLC - SURVEYS						Out of range
FILE 1-17 - CPR WELL - SURVEYS						Out of range
FILE 31-17 - CPR WELL - SURVEYS						Out of range
FILE 32-17 - CPR WELL - SURVEYS						Out of range
FILE 41-17 - CPR WELL - SURVEYS	16,602.09	7,475.75	1,644.07	1,477.07	9.844	CC, ES
FILE 41-17 - CPR WELL - SURVEYS	16,800.00	7,475.52	1,655.94	1,486.50	9.773	SF
FILE 42-17 - CPR WELL - NO SURVEYS						Out of range
FILE 4-2-17 - CPR WELL - SURVEYS						Out of range
FILE 42-17X - CPR WELL - SURVEYS	15,165.31	7,546.28	1,574.31	1,425.86	10.606	CC
FILE 42-17X - CPR WELL - SURVEYS	15,200.00	7,545.83	1,574.69	1,425.18	10.533	ES
FILE 42-17X - CPR WELL - SURVEYS	15,400.00	7,543.70	1,591.70	1,437.25	10.306	SF
FILE 6-0-17 - CPR WELL - SURVEYS						Out of range
FILE 8-2-17 - CPR WELL - SURVEYS	15,831.81	7,600.61	1,138.09	983.64	7.368	CC, ES
FILE 8-2-17 - CPR WELL - SURVEYS	16,000.00	7,600.03	1,150.45	992.11	7.266	SF
FREDERICKS 13-27 - KMG WELL - NO SURVEYS						Out of range
FREDERICKS 13-27X - KMG WELL - SURVEYS						Out of range
GARVER U 34-5JI - KMG WELL - NO SURVEYS						Out of range
HINGLEY 1 - KPK WELL - NO SURVEYS						Out of range
HINGLEY 2 - KPK WELL - NO SUREYS						Out of range
HSR-STROMQUIST 14-21 - KMG WELL - GYRO	1,507.51	1,483.90	206.68	201.59	40.572	CC, ES
HSR-STROMQUIST 14-21 - KMG WELL - GYRO	7,900.00	7,302.65	385.00	349.78	10.933	SF
JACK A MLEYNEK 2 - KPK WELL - NO SURVEYS						Out of range
JACK MLEYNEK 1 - KPK WELL - NO SURVEYS						Out of range
JACK MLEYNEK 3 - KPK WELL - NO SURVEYS						Out of range
JACK MLEYNEK 4 - KPK WELL - NO SURVEYS						Out of range
JACK MLEYNEK 5 - KPK WELL - NO SURVEYS						Out of range
JILLSON 0-6-22 - CPR WELL - SURVEYS						Out of range
JILLSON 1 - KPK WELL - NO SURVEYS						Out of range
JILLSON 11-22 - CPR WELL - GYRO						Out of range

CC - Min centre to center distance or convergent point, SF - min separation factor, ES - min ellipse separation

Cathedral Energy Services

Anticollision Summary Report

Company:	Crestone Peak Resources	Local Co-ordinate Reference:	Well DREAM WEAVER North 3E-21H-N268 - Slot DREAM WEAVER North 3E-21H-N268 SHL
Project:	DJ BASIN	TVD Reference:	23' KB @ 4924.00usft (Original Well Elev)
Reference Site:	S21-T2N-R68W	MD Reference:	23' KB @ 4924.00usft (Original Well Elev)
Site Error:	0.00 usft	North Reference:	True
Reference Well:	DREAM WEAVER North 3E-21H-N268	Survey Calculation Method:	Minimum Curvature
Well Error:	0.00 usft	Output errors are at	2.00 sigma
Reference Wellbore	OH	Database:	USA EDM 5000 Multi Users DB
Reference Design:	PLAN #1	Offset TVD Reference:	Offset Datum

Summary						
Site Name Offset Well - Wellbore - Design	Reference Measured Depth (usft)	Offset Measured Depth (usft)	Distance Between Centres (usft)	Distance Between Ellipses (usft)	Separation Factor	Warning
S21-T2N-R68W (OFFSETS)						
JILLSON 12-22 - CPR WELL - GYRO						Out of range
JILLSON 14-22 - CPR WELL - GYRO						Out of range
JILLSON 3 - KPK WELL - NO SURVEYS						Out of range
JILLSON 5 - KPK WELL - NO SURVEYS						Out of range
JILLSON A 1 - KPK WELL - NO SURVEYS	600.00	575.99	1,543.34	1,541.39	792.748	CC, ES
JILLSON A 1 - KPK WELL - NO SURVEYS	5,000.00	4,914.21	1,932.19	1,910.81	90.356	SF
JILLSON A 2 - KPK WELL - NO SURVEYS	600.00	575.99	1,722.76	1,720.81	883.436	CC, ES
JILLSON A 2 - KPK WELL - NO SURVEYS	2,100.00	2,058.27	1,926.45	1,919.28	268.913	SF
JILLSON A 3 - KPK WELL - NO SURVEYS						Out of range
JILLSON A 4 - KPK WELL - NO SURVEYS						Out of range
JILLSON-EAST RINN 3A-22H-M268 - CPR WELL - SUR						Out of range
JILLSON-EAST RINN 3B-22H-M268 - CPR WELL - SUR						Out of range
JILLSON-EAST RINN 3C-22H-M268 - CPR WELL - SUR						Out of range
KENNEDY 1 - MACEY & MERSHON WELL - NO SURVE						Out of range
KENNEDY 31-21 - CPR WELL - GYRO						Out of range
KENNEDY 32-21 - CPR WELL - GYRO						Out of range
KENNEDY 41-21 - CPR WELL - GYRO						Out of range
KENNEDY 4-2-21 - CPR WELL - SURVEYS	10,713.43	7,370.44	1,709.16	1,633.09	22.469	CC, ES
KENNEDY 4-2-21 - CPR WELL - SURVEYS	11,000.00	7,370.22	1,733.01	1,653.38	21.763	SF
KENNEDY 6-0-21 - CPR WELL - SURVEYS						Out of range
KENNEDY 6-4-21 - CPR WELL - SURVEYS						Out of range
KENNEDY 8-0-21 - CPR WELL - SURVEYS						Out of range
KENNEDY GAS UNIT 1 - CPR WELL - GYRO						Out of range
LONGMONT 8-10K - TOP OPERATING WELL - NO SUR						Out of range
LONGMONT FARMS 1 - KPK WELL - NO SURVEYS						Out of range
LONGMONT FARMS 3 - KPK WELL - NO SURVEYS						Out of range
MAX SERAFINI 1 - KPK WELL - NO SURVEYS						Out of range
MAX SERAFINI C 1 - KPK WELL - NO SURVEYS						Out of range
MILES 1 - KPK WELL - NO SURVEYS						Out of range
MILES 33-3M - KMG WELL - GYRO						Out of range
MILES 4 - KPK WELL - NO SURVEYS						Out of range
MILES 5 - KPK WELL - NO SURVEYS						Out of range
MILES JOSEPHINE 1 - KPK WELL - NO SURVEYS						Out of range
MILES JOSEPHINE 2 - KPK WELL - NO SURVEYS						Out of range
MILES JOSEPHINE B 1 - KPK WELL - NO SURVEYS						Out of range
MILLER 12-27 - CPR WELL - GYRO						Out of range
MILTON NELSON 1 - KPK WELL - NO SURVEYS	600.00	581.00	857.17	855.04	400.933	CC, ES
MILTON NELSON 1 - KPK WELL - NO SURVEYS	5,200.00	4,960.00	1,571.27	1,547.66	66.557	SF
MILTON NELSON UN-C 1 - KPK WELL - NO SURVEYS	5,347.15	5,227.00	499.52	472.89	18.756	CC, ES
MILTON NELSON UN-C 1 - KPK WELL - NO SURVEYS	5,400.00	5,227.00	502.31	475.28	18.585	SF
MILTON NELSON UNIT 1 - KPK WELL - NO SURVEYS	2,434.99	2,403.83	440.48	431.25	47.769	CC
MILTON NELSON UNIT 1 - KPK WELL - NO SURVEYS	2,500.00	2,460.20	440.62	431.14	46.485	ES
MILTON NELSON UNIT 1 - KPK WELL - NO SURVEYS	5,100.00	4,977.00	640.36	616.11	26.411	SF
MLEYNEK 28-10M - KMG WELL - GYRO						Out of range
MLEYNEK U 28-10JI - KMG WELL - GYRO						Out of range
MLEYNEK U 28-15JI - KMG WELL - GYRO						Out of range
MORGAN-A 4 - KPK WELL - NO SURVEYS						Out of range
NELSON 42-33 /2-68/ 2 - ANADARKO WELL - NO SURV						Out of range
NELSON DUANE E 41-33 (2-68) 1 - CHAMPLIN PETRO						Out of range
NELSON DUANE E 41-33 (2-68) 1-X - KMG WELL - NO						Out of range
NELSON E UNIT 2 - CPR WELL - GYRO						Out of range

CC - Min centre to center distance or convergent point, SF - min separation factor, ES - min ellipse separation

Cathedral Energy Services

Anticollision Summary Report

Company:	Crestone Peak Resources	Local Co-ordinate Reference:	Well DREAM WEAVER North 3E-21H-N268 - Slot DREAM WEAVER North 3E-21H-N268 SHL
Project:	DJ BASIN	TVD Reference:	23' KB @ 4924.00usft (Original Well Elev)
Reference Site:	S21-T2N-R68W	MD Reference:	23' KB @ 4924.00usft (Original Well Elev)
Site Error:	0.00 usft	North Reference:	True
Reference Well:	DREAM WEAVER North 3E-21H-N268	Survey Calculation Method:	Minimum Curvature
Well Error:	0.00 usft	Output errors are at	2.00 sigma
Reference Wellbore	OH	Database:	USA EDM 5000 Multi Users DB
Reference Design:	PLAN #1	Offset TVD Reference:	Offset Datum

Summary						
Site Name Offset Well - Wellbore - Design	Reference Measured Depth (usft)	Offset Measured Depth (usft)	Distance Between Centres (usft)	Distance Between Ellipses (usft)	Separation Factor	Warning
S21-T2N-R68W (OFFSETS)						
NELSON MILTON H 'D' 1 - KMG WELL - GYRO						Out of range
NELSON MILTON H 'M' 1 - KMG WELL - GYRO						Out of range
NELSON MILTON-F 1 - KPK WELL - NO SURVEYS						Out of range
NORTH RINN 0-4-9 - CPR WELL - SURVEYS	19,573.95	7,610.75	1,147.50	939.56	5.518	CC, ES, SF
NORTH RINN 0-6-9 - CPR WELL - SURVEYS	18,804.96	7,387.98	1,191.61	993.72	6.022	CC, ES, SF
NORTH RINN 0-8-9 - CPR WELL - SURVEYS	17,324.04	7,533.48	1,130.56	945.94	6.124	CC, ES
NORTH RINN 0-8-9 - CPR WELL - SURVEYS	17,400.00	7,531.76	1,133.11	947.82	6.115	SF
NORTH RINN 13-9 - CPR WELL - SURVEYS	19,410.25	7,374.75	455.34	243.67	2.151	CC, ES, SF
NORTH RINN 14-9 - CPR WELL - SURVEYS	17,938.98	7,330.43	551.83	366.94	2.985	CC, ES, SF
NORTH RINN 24-9 - CPR WELL - SURVEYS	18,135.48	7,383.49	790.94	603.77	4.226	CC, ES, SF
NORTH RINN 2-4-9 - CPR WELL - SURVEYS	19,573.95	7,483.10	432.32	302.03	3.318	CC, ES, SF
NORTH RINN 2-6-9 - CPR WELL - SURVEYS	18,626.51	7,269.17	153.43	-39.60	0.795	Level 1, CC, ES, SF
OSKARSON 1 - HRM RES II LLC - NO SURVEYS						Out of range
OSKARSON 2 - ENERVEST OP - NO SURVEYS						Out of range
OSKARSON 24-33 - CPR WELL - GYRO						Out of range
OSKARSON 2-8-33 - CPR WELL - SURVEYS						Out of range
OSKARSON 3 - HRM RES II LLC - NO SURVEYS						Out of range
OSKARSON-E 1 - CPR WELL - GYRO						Out of range
OSKARSON-E 2 - CPR WELL - NO SURVEYS						Out of range
RASMUSSEN 3 - PETERSON ENERGY - GYRO						Out of range
RASMUSSEN 1 - PETERSON - GYRO	5,103.38	4,967.00	1,345.92	1,323.60	60.302	CC, ES
RASMUSSEN 1 - PETERSON - GYRO	5,300.00	4,967.00	1,360.21	1,337.30	59.374	SF
RASMUSSEN 11-28 - CPR WELL - SURVEYS	6,713.91	6,945.05	981.99	932.30	19.765	CC, ES
RASMUSSEN 11-28 - CPR WELL - SURVEYS	6,800.00	7,027.86	986.76	936.78	19.744	SF
RASMUSSEN 12-28 - CPR WELL - SURVEYS						Out of range
RASMUSSEN 2 - PETERSON ENERGY - NO SURVEYS						Out of range
RASMUSSEN 21-28 - CPR WELL - GYRO	6,651.73	6,579.63	1,127.01	1,095.17	35.396	CC, ES
RASMUSSEN 21-28 - CPR WELL - GYRO	6,800.00	6,725.69	1,140.30	1,107.70	34.978	SF
RASMUSSEN 22-28 - CPR WELL - GYRO						Out of range
RASMUSSEN 2-4-28 - CPR WELL - SURVEYS						Out of range
RASMUSSEN 31-28 - CPR WELL - GYRO						Out of range
RASMUSSEN 32-28 32-28 - CPR WELL - GYRO						Out of range
RASMUSSEN 4-0-28 - CPR WELL - SURVEYS	5,195.30	5,621.19	1,395.43	1,344.50	27.399	CC
RASMUSSEN 4-0-28 - CPR WELL - SURVEYS	5,200.00	5,624.35	1,395.43	1,344.46	27.380	ES
RASMUSSEN 4-0-28 - CPR WELL - SURVEYS	6,600.00	6,935.34	1,474.33	1,415.22	24.941	SF
RASMUSSEN 41-28 - CPR WELL - GYRO						Out of range
RASMUSSEN 42-28 - CPR WELL - SURVEYS						Out of range
RASMUSSEN 4-2-28 - CPR WELL - SURVEYS						Out of range
RASMUSSEN 4-4-28 - CPR WELL - SURVEYS						Out of range
RASMUSSEN 44-29 - KPK WELL - NO SURVEYS						Out of range
RASMUSSEN 4-A - PETERSON ENERGY - GYRO	5,268.65	4,960.00	1,368.07	1,346.77	64.205	CC, ES
RASMUSSEN 4-A - PETERSON ENERGY - GYRO	5,500.00	4,960.00	1,387.50	1,365.60	63.359	SF
RASMUSSEN C" 2" - CPR WELL - GYRO						Out of range
RASMUSSEN-C-UNIT 1 - CPR WELL - GYRO	6,697.94	6,599.87	1,508.46	1,478.64	50.587	CC
RASMUSSEN-C-UNIT 1 - CPR WELL - GYRO	6,700.00	6,601.88	1,508.46	1,478.63	50.568	ES
RASMUSSEN-C-UNIT 1 - CPR WELL - GYRO	6,900.00	6,779.92	1,536.97	1,506.15	49.878	SF
RODGERS 1 - KPK WELL - NO SURVEYS						Out of range
SAUNDERS TRUST 8-2K8 - EXTRACTION WELL - NO						Out of range
SCHLAGEL 2 - EXTRACTION WELL - NO SURVEYS						Out of range
SERAFINI E MAX GU 1 - KMG WELL - GYRO	13,015.21	7,284.06	103.47	-1.45	0.986	Level 1, CC, ES, SF
SERAFINI-B 2 - KPK WELL - NO SURVEYS						Out of range

CC - Min centre to center distance or convergent point, SF - min separation factor, ES - min ellipse separation

Cathedral Energy Services

Anticollision Summary Report

Company:	Crestone Peak Resources	Local Co-ordinate Reference:	Well DREAM WEAVER North 3E-21H-N268 - Slot DREAM WEAVER North 3E-21H-N268 SHL
Project:	DJ BASIN	TVD Reference:	23' KB @ 4924.00usft (Original Well Elev)
Reference Site:	S21-T2N-R68W	MD Reference:	23' KB @ 4924.00usft (Original Well Elev)
Site Error:	0.00 usft	North Reference:	True
Reference Well:	DREAM WEAVER North 3E-21H-N268	Survey Calculation Method:	Minimum Curvature
Well Error:	0.00 usft	Output errors are at	2.00 sigma
Reference Wellbore	OH	Database:	USA EDM 5000 Multi Users DB
Reference Design:	PLAN #1	Offset TVD Reference:	Offset Datum

Summary						
Site Name Offset Well - Wellbore - Design	Reference Measured Depth (usft)	Offset Measured Depth (usft)	Distance Between Centres (usft)	Distance Between Ellipses (usft)	Separation Factor	Warning
S21-T2N-R68W (OFFSETS)						
SHAW 1 - KPK WELL - NO SURVEYS						Out of range
SHAW 15-20 - KPK - SURVEYS						Out of range
SHAW 16-20 - KPK - SURVEYS						Out of range
STROMQUIST 1 - KPK WELL - NO SURVEYS						Out of range
STROMQUIST 11-21 - KMG WELL - GYRO	617.96	608.27	875.30	873.34	445.795	CC, ES
STROMQUIST 11-21 - KMG WELL - GYRO	8,900.00	7,295.05	1,023.17	979.40	23.377	SF
STROMQUIST 13-21 - KMG WELL - GYRO	7,300.00	7,156.59	239.79	206.92	7.295	SF
STROMQUIST 13-21 - KMG WELL - GYRO	7,308.88	7,162.95	239.69	206.87	7.303	CC, ES
STROMQUIST 22-21 - KMG WELL - SURVEYS	9,289.22	7,387.64	261.47	205.65	4.684	CC, ES, SF
STROMQUIST 23-21 - KMG WELL - SURVEYS	1,817.69	1,795.74	485.50	478.33	67.730	CC, ES
STROMQUIST 23-21 - KMG WELL - SURVEYS	8,300.00	7,349.08	1,363.50	1,323.56	34.138	SF
STROMQUIST 34-21 - KMG WELL - SURVEYS	1,636.74	1,452.16	1,044.85	1,038.89	175.276	CC, ES
STROMQUIST 34-21 - KMG WELL - SURVEYS	7,000.00	6,982.48	1,124.26	1,088.49	31.435	SF
STROMQUIST 35-21 - KMG WELL - SURVEYS	6,653.83	6,652.66	326.21	285.21	7.956	CC, ES
STROMQUIST 35-21 - KMG WELL - SURVEYS	6,700.00	6,699.01	327.48	286.19	7.932	SF
TRAVELERS 28-11M - KMG WELL - GYRO						Out of range
TRAVELERS U 28-13DI - KMG WELL - GYRO						Out of range
UPRC 33-1M - KMG WELL - GYRO						Out of range
UPRR 43 PAN AM-B 7 - KPK WELL - NO SURVEYS						Out of range
WESTERN 3-21A - KMG WELL - GYRO	11,304.84	7,284.52	935.00	856.44	11.903	CC, ES
WESTERN 3-21A - KMG WELL - GYRO	11,400.00	7,284.83	939.83	860.55	11.856	SF
WILDFLOWER 12-27 - KMG WELL - SURVEYS						Out of range
WILDFLOWER 33-27 - KMG WELL - SURVEYS						Out of range
WOOLEY UNIT 1 - KPK WELL - NO SURVEYS						Out of range

Cathedral Energy Services

Anticollision Summary Report

Company:	Crestone Peak Resources	Local Co-ordinate Reference:	Well DREAM WEAVER North 3E-21H-N268 - Slot DREAM WEAVER North 3E-21H-N268 SHL
Project:	DJ BASIN	TVD Reference:	23' KB @ 4924.00usft (Original Well Elev)
Reference Site:	S21-T2N-R68W	MD Reference:	23' KB @ 4924.00usft (Original Well Elev)
Site Error:	0.00 usft	North Reference:	True
Reference Well:	DREAM WEAVER North 3E-21H-N268	Survey Calculation Method:	Minimum Curvature
Well Error:	0.00 usft	Output errors are at	2.00 sigma
Reference Wellbore	OH	Database:	USA EDM 5000 Multi Users DB
Reference Design:	PLAN #1	Offset TVD Reference:	Offset Datum

Summary

Site Name Offset Well - Wellbore - Design	Reference Measured Depth (usft)	Offset Measured Depth (usft)	Distance Between Centres (usft)	Distance Between Ellipses (usft)	Separation Factor	Warning
S32-T2N-R68W						
Anderson 22-32 - KPK WELL - NO SURVEYS						Out of range
Anderson 32-32 - CPR WELL - SURVEYS						Out of range
Anderson 41-32 - CPR - GYRO						Out of range
Anderson 4-2-32 - CPR WELL - SURVEYS						Out of range
Anderson 6-4-32 - CPR WELL - SURVEYS						Out of range
Anderson Trust 1 - KPK - NO SURVEYS						Out of range
Anderson Trust 1 A - CPR WELL - GYRO						Out of range
Anderson Trust 2-A - CPR WELL - NO SURVEYS						Out of range
Anderson Trust 32-2 - CPR WELL - GYRO						Out of range
Anderson Trust 32-8 - CPR WELL - GYRO						Out of range
Anderson Trust C 1 - CPR WELL - SURVEYS						Out of range
Anderson Trust C Unit 2 - CPR WELL - GYRO						Out of range
Brown 22-5 - CPR WELL - GYRO						Out of range
Brown 31-5 - CPR WELL - SURVEYS						Out of range
Brown 41-5 - CPR WELL - SURVEYS						Out of range
Brown 5-3 - CPR WELL - GYRO						Out of range
Brown 5-5 - CPR WELL - GYRO						Out of range
Brown C Unit 1 - CPR WELL - GYRO						Out of range
Brown C Unit 2 - CPR WELL - GYRO						Out of range
Bryant 10-30 - KMG WELL - SURVEYS						Out of range
Bryant 16-30 - KMG WELL - SURVEYS						Out of range
Bryant 20-30 - KMG WELL - SURVEYS						Out of range
Bryant 23-30 - KMG WELL - SURVEYS						Out of range
Bryant 24-30 - KMG WELL - SURVEYS						Out of range
Bryant 33-29 - KMG WELL - SURVEYS						Out of range
Bryant 36-30 - KMG WELL - SURVEYS						Out of range
Bryant 8-30 - KMG WELL - SURVEYS						Out of range
Bryant Federal 37-30 - KMG WELL - SURVEYS						Out of range
Bulthaup 1-6 - KMG WELL - GYRO						Out of range
Bulthaup 16-6 - KMG WELL - SURVEYS						Out of range
Bulthaup 17-6 - KMG WELL - SURVEYS						Out of range
Bulthaup 24-6 - KMG WELL - SURVEYS						Out of range
Bulthaup 27-6 - KMG WELL - SURVEYS						Out of range
Bulthaup 39-6 - KMG WELL - SURVEYS						Out of range
Bulthaup 40-6 - KMG WELL - SURVEYS						Out of range
Bulthaup 8-6 - KMG WELL - GYRO						Out of range
Bulthaup 9-6 - KMG WELL - SURVEYS						Out of range
Canino 1-X - HUGHES CW - NO SURVEYS						Out of range
Champlin 86 Amoco F 6 - KPK - NO SURVEYS						Out of range
Champlin 86 N 1 - KMG WELL - GYRO						Out of range
Champlin Amoco 86 F 7 - KPK WELL - SURVEYS						Out of range
Cinque 1 - FOUNDATION WELL - NO SURVEYS						Out of range
Cinque 2 - FOUNDATION WELL - NO SURVEYS						Out of range
Cinque 4 - FOUNDATION WELL - NO SURVEYS						Out of range
FILE 3A-32H-K268 - OH - FINAL						Out of range
FILE 3B-32H-K268 - OH - FINAL						Out of range
FILE 3C-32H-K268 - OH - FINAL						Out of range
FILE 3D-32H-K268 - OH - FINAL						Out of range
FILE 3E-32H-K268 - OH - FINAL						Out of range
FILE 3F-32H-K268 - OH - FINAL						Out of range
FILE 3G-32H-K268 - OH - FINAL						Out of range

CC - Min centre to center distance or convergent point, SF - min separation factor, ES - min ellipse separation

Cathedral Energy Services

Anticollision Summary Report

Company:	Crestone Peak Resources	Local Co-ordinate Reference:	Well DREAM WEAVER North 3E-21H-N268 - Slot DREAM WEAVER North 3E-21H-N268 SHL
Project:	DJ BASIN	TVD Reference:	23' KB @ 4924.00usft (Original Well Elev)
Reference Site:	S21-T2N-R68W	MD Reference:	23' KB @ 4924.00usft (Original Well Elev)
Site Error:	0.00 usft	North Reference:	True
Reference Well:	DREAM WEAVER North 3E-21H-N268	Survey Calculation Method:	Minimum Curvature
Well Error:	0.00 usft	Output errors are at	2.00 sigma
Reference Wellbore	OH	Database:	USA EDM 5000 Multi Users DB
Reference Design:	PLAN #1	Offset TVD Reference:	Offset Datum

Summary						
Site Name	Reference Measured Depth (usft)	Offset Measured Depth (usft)	Distance Between Centres (usft)	Distance Between Ellipses (usft)	Separation Factor	Warning
Offset Well - Wellbore - Design						
S32-T2N-R68W						
FILE 3H-32H-K268 - OH - FINAL						Out of range
FILE 3Q-32H-K268 - OH - FINAL						Out of range
FILE 3R-32H-K268 - OH - FINAL						Out of range
FILE 3S-32H-K268 - OH - FINAL						Out of range
FILE 3T-32H-K268 - OH - FINAL						Out of range
FILE FED 3I-32H-K268 - OH - FINAL						Out of range
FILE FED 3J-32H-K268 - OH - FINAL						Out of range
FILE FED 3K-32H-K268 - OH - FINAL						Out of range
FILE FED 3K-32H-K268 - OH - PLAN #4						Out of range
FILE FED 3L-32H-K268 - OH - FINAL						Out of range
FILE FED 3M-32H-K268 - OH - FINAL						Out of range
FILE FED 3N-32H-K268 - OH - FINAL						Out of range
FILE FED 3O-32H-K268 - OH - FINAL						Out of range
FILE FED 3P-32H-K268 - OH - FINAL						Out of range
Foster 33-5 - CPR WELL - SURVEYS						Out of range
Foster 43-5 - CPR WELL - SURVEYS						Out of range
Foster 4-5 - CPR WELL - SURVEYS						Out of range
Foster 4-6-5 - CPR WELL - SURVEYS						Out of range
Foster 6-4-5 - CPR - SURVEYS						Out of range
Foster 6-4-5X - CPR WELL - SURVEYS						Out of range
Foster 6-8-5 - CPR WELL - SURVEYS						Out of range
Foster 8-8-5 - CPR WELL - SURVEYS						Out of range
Foster E Unit 1 - CPR - GYRO						Out of range
Gene 11-5 - KERR-MCGEE - GYRO						Out of range
Hankins 1 - KPK WELL - NO SURVEYS						Out of range
Hauck 17-29 - KMG WELL - SURVEYS						Out of range
Hauck 24-29 - KMG WELL - SURVEYS						Out of range
Hauck 7-29 - KMG WELL - SURVEYS						Out of range
HSR-Bryant 9-30A - KMG WELL - GYRO						Out of range
HSR-Williams 10-20 - KMG WELL - GYRO						Out of range
HWY52 4A-32H-O268 - OH - FINAL						Out of range
HWY52 4B-32H-O268 - OH - FINAL						Out of range
HWY52 4C-32H-O268 - OH - FINAL						Out of range
HWY52 4D-32H-O268 - OH - FINAL						Out of range
HWY52 4E-32H-O268 - OH - FINAL						Out of range
HWY52 4F-32H-O268 - OH - FINAL						Out of range
HWY52 4G-32H-O268 - OH - FINAL						Out of range
HWY52 4H-32H-O268 - OH - FINAL						Out of range
HWY52 4I-32H-O268 - OH - FINAL						Out of range
HWY52 4J-32H-O268 - OH - FINAL						Out of range
HWY52 4K-32H-O268 - OH - FINAL						Out of range
HWY52 4L-32H-O268 - OH - FINAL						Out of range
HWY52 4M-32H-O268 - OH - FINAL						Out of range
HWY52 4N-32H-O268 - OH - FINAL						Out of range
HWY52 4O-32H-O268 - OH - FINAL						Out of range
HWY52 4P-32H-O268 - OH - FINAL						Out of range
HWY52 4Q-32H-O268 - OH - FINAL						Out of range
HWY52 4R-32H-O268 - OH - FINAL						Out of range
HWY52 4S-32H-O268 - OH - FINAL						Out of range
HWY52 4T-32H-O268 - OH - FINAL						Out of range
HWY52 4U-32H-O268 - OH - FINAL						Out of range

CC - Min centre to center distance or convergent point, SF - min separation factor, ES - min ellipse separation

Cathedral Energy Services

Anticollision Summary Report

Company:	Crestone Peak Resources	Local Co-ordinate Reference:	Well DREAM WEAVER North 3E-21H-N268 - Slot DREAM WEAVER North 3E-21H-N268 SHL
Project:	DJ BASIN	TVD Reference:	23' KB @ 4924.00usft (Original Well Elev)
Reference Site:	S21-T2N-R68W	MD Reference:	23' KB @ 4924.00usft (Original Well Elev)
Site Error:	0.00 usft	North Reference:	True
Reference Well:	DREAM WEAVER North 3E-21H-N268	Survey Calculation Method:	Minimum Curvature
Well Error:	0.00 usft	Output errors are at	2.00 sigma
Reference Wellbore	OH	Database:	USA EDM 5000 Multi Users DB
Reference Design:	PLAN #1	Offset TVD Reference:	Offset Datum

Summary

Site Name Offset Well - Wellbore - Design	Reference Measured Depth (usft)	Offset Measured Depth (usft)	Distance Between Centres (usft)	Distance Between Ellipses (usft)	Separation Factor	Warning
S32-T2N-R68W						
HWY52 4V-32H-O268 - OH - FINAL						Out of range
HWY52 4W-32H-O268 - OH - FINAL						Out of range
Jack Hein Unit 1 - HS RESOURCES WELL - NO SURVE						Out of range
John Lamar 1 - KPK WELL - NO SURVEYS						Out of range
Johnson 32-30 - KPK WELL - NO SURVEYS						Out of range
Johnson 7-30A - KMG WELL - GYRO						Out of range
Kenneth Koch 1 - KPK WELL - NO SURVEYS						Out of range
Kenyon 34-19 - CPR WELL - SURVEYS						Out of range
Kenyon 4-8-19 - CPR WELL - SURVEYS						Out of range
Kenyon 8-4-19 - CPR WELL - SURVEYS						Out of range
Kenyon 8-6-19 - CPR WELL - SURVEYS						Out of range
Kenyon 8-8-19 - CPR WELL - SURVEYS						Out of range
Koch 41-6 - KPK WELL - NO SURVEYS						Out of range
Koch Kenneth E A-1 - KMG WELL - SURVEY						Out of range
Milton H Nelson H-1 - KMG WELL - GYRO						Out of range
Milton H Nelson I1 - KMG WELL - GYRO						Out of range
Milton H Nelson L1 - KMG WELL - GYRO						Out of range
Milton Nelson K1 - KMG WELL - GYRO						Out of range
Nelson 1 - TEXAS TEA - NO SURVEYS						Out of range
Nelson 1-A - TEXAS TEA WELL - NO SURVEYS						Out of range
Nelson 2 - TEXAS TEA WELL - NO SURVEYS						Out of range
Nelson 3 - TEXAS TEA WELL - NO SURVEYS						Out of range
Nelson 4 - TEXAS TEA WELL - NO SURVEYS						Out of range
Nelson 5 - TEXAS TEA WELL - NO SURVEYS						Out of range
Nelson D2 - KPK WELL - NO SURVEYS						Out of range
Nelson E Unit 1 - CPR WELL - GYRO						Out of range
Nelson E Unit 2 - CPR WELL - GYRO						Out of range
NOAA Federal 11-32 - CPR WELL - GYRO						Out of range
Osarkson 2-8-33 - CPR WELL - SURVEYS						Out of range
Oskarson 13-33 - CPR - GYRO						Out of range
Oskarson 23-33 - CPR WELL - GYRO						Out of range
Oskarson 4 - HRM - NO SURVEYS						Out of range
Oskarson 4-4-33 - CPR WELL - SURVEYS						Out of range
Oskarson 4-6-33 - CPR WELL - SURVEYS						Out of range
Oskarson 4-8-33 - CPR WELL - SURVEYS						Out of range
Oskarson E Unit 1 - CPR WELL - GYRO						Out of range
Paquette 13-5 - KMG WELL - GYRO						Out of range
Paquette 14-5 - KERR-MCGEE - GYRO						Out of range
Rasmussen 10-29 - KMG WELL - SURVEYS						Out of range
Rasmussen 14-29 - KMG WELL - SURVEYS						Out of range
Rasmussen 16-29 - KMG WELL - SURVEYS						Out of range
Rasmussen 19-29 - KMG WELL - SURVEYS						Out of range
Rasmussen 20-29 - KMG WELL - SURVEYS						Out of range
Rasmussen 22-29 - KMG WELL - SURVEYS						Out of range
Rasmussen 23-29 - KMG WELL - SURVEYS						Out of range
Rasmussen 25-29 - KMG WELL - SURVEYS						Out of range
Rasmussen 36-29 - KMG WELL - SURVEYS						Out of range
Rasmussen 37-29 - KMG WELL - SURVEYS						Out of range
Rasmussen 39-29 - KMG WELL - SURVEYS						Out of range
Rasmussen Fed 35-29 - KMG WELL - SURVEYS						Out of range
Ray Nelson 0-4-32 - CPR WELL - SURVEYS						Out of range

CC - Min centre to center distance or convergent point, SF - min separation factor, ES - min ellipse separation

Cathedral Energy Services

Anticollision Summary Report

Company:	Crestone Peak Resources	Local Co-ordinate Reference:	Well DREAM WEAVER North 3E-21H-N268 - Slot DREAM WEAVER North 3E-21H-N268 SHL
Project:	DJ BASIN	TVD Reference:	23' KB @ 4924.00usft (Original Well Elev)
Reference Site:	S21-T2N-R68W	MD Reference:	23' KB @ 4924.00usft (Original Well Elev)
Site Error:	0.00 usft	North Reference:	True
Reference Well:	DREAM WEAVER North 3E-21H-N268	Survey Calculation Method:	Minimum Curvature
Well Error:	0.00 usft	Output errors are at	2.00 sigma
Reference Wellbore	OH	Database:	USA EDM 5000 Multi Users DB
Reference Design:	PLAN #1	Offset TVD Reference:	Offset Datum

Summary						
Site Name	Reference Measured Depth (usft)	Offset Measured Depth (usft)	Distance Between Centres (usft)	Distance Between Ellipses (usft)	Separation Factor	Warning
Offset Well - Wellbore - Design						
S32-T2N-R68W						
Ray Nelson 12-32 - CPR WELL - GYRO						Out of range
Ray Nelson 13-32 - CPR WELL - SURVEYS						Out of range
Ray Nelson 14-32 - CPR WELL - SURVEYS						Out of range
Ray Nelson 23-32 - CPR WELL - GYRO						Out of range
Ray Nelson 24-32 - CPR WELL - SURVEYS						Out of range
Ray Nelson 2-4-32 - CPR WELL - SURVEYS						Out of range
Ray Nelson 33-32 - CPR WELL - SURVEYS						Out of range
Ray Nelson 34-32 - CPR WELL - SURVEYS						Out of range
Ray Nelson 44-32 - CPR WELL - SURVEYS						Out of range
Ray Nelson 4-4-32 - CPR WELL - SURVEYS						Out of range
Ray Nelson 4-6-32 - CPR WELL - SURVEYS						Out of range
Ray Nelson 8-8-32 - CPR WELL - SURVEYS						Out of range
Regnier Farms 32-19 - CPR WELL - GYRO						Out of range
Regnier Farms 33-19 - CPR WELL - GYRO						Out of range
Regnier Farms 42-19 - CPR WELL - GYRO						Out of range
Regnier Farms 43-19 - CPR WELL - SURVEYS						Out of range
Regnier Farms B 2 - CPR WELL - GYRO						Out of range
Regnier Farms B Unit 1 - CPR WELL - GYRO						Out of range
Sawdey Unit 2 - KMG WELL - GYRO						Out of range
Schriner 11-5 - KMG WELL - GYRO						Out of range
Schriner 12-5 - KMG WELL - GYRO						Out of range
SEC Four 12-4 - KMG WELL - SURVEYS						Out of range
SEC Four 13-4 - KMG WELL - SURVEYS						Out of range
SEC Four 14-4 - KMG WELL - SURVEYS						Out of range
SEC Four 21-4 - KMG WELL - SURVEYS						Out of range
SEC Four 22-4 - KMG WELL - SURVEYS						Out of range
SEC Four 31-4 - KMG WELL - SURVEYS						Out of range
SEC Four 32-4 - KMG WELL - SURVEYS						Out of range
SEC Four 33-4 - KMG WELL - SURVEYS						Out of range
SEC Four 3-4 - KMG WELL - SURVEYS						Out of range
SEC Four 35-4 - KMG WELL - SURVEYS						Out of range
SEC Four 4-4 - KMG WELL - SURVEYS						Out of range
SEC Four 5-4 - KMG WELL - SURVEYS						Out of range
SEC Four 6-4 - KMG WELL - SURVEYS						Out of range
Shaw 11-29A - KMG WELL - SURVEYS						Out of range
Shaw 12-29A - KMG - GYRO						Out of range
Shaw 15-20 - KPK - SURVEYS						Out of range
Shaw 16-20 - KPK - SURVEYS						Out of range
Tallgrass 1-8 - KMG - SURVEYS						Out of range
Tallgrass 2-8 - KMG - SURVEYS						Out of range
Tallgrass 3-8 - KMG - SURVEYS						Out of range
Tallgrass 4-8 - KMG - SURVEYS						Out of range
Tallgrass 5-8 - KMG - SURVEYS						Out of range
Tallgrass 6-8 - KMG WELL - SURVEYS						Out of range
Williams 10-20 - KMG WELL - SURVEYS						Out of range
Williams 11-20 - KMG WELL - SURVEYS						Out of range
Williams 13-20 - KMG WELL - SURVEYS						Out of range
Williams 14-20 - KMG WELL - SURVEYS						Out of range
Williams 16-20 - KMG WELL - SURVEYS	7,591.30	7,432.88	1,738.37	1,694.64	39.749	CC
Williams 16-20 - KMG WELL - SURVEYS	7,600.00	7,435.22	1,738.40	1,694.60	39.692	ES
Williams 16-20 - KMG WELL - SURVEYS	8,300.00	7,446.06	1,894.52	1,843.98	37.486	SF

CC - Min centre to center distance or convergent point, SF - min separation factor, ES - min ellipse separation

Cathedral Energy Services

Anticollision Summary Report

Company:	Crestone Peak Resources	Local Co-ordinate Reference:	Well DREAM WEAVER North 3E-21H-N268 - Slot DREAM WEAVER North 3E-21H-N268 SHL
Project:	DJ BASIN	TVD Reference:	23' KB @ 4924.00usft (Original Well Elev)
Reference Site:	S21-T2N-R68W	MD Reference:	23' KB @ 4924.00usft (Original Well Elev)
Site Error:	0.00 usft	North Reference:	True
Reference Well:	DREAM WEAVER North 3E-21H-N268	Survey Calculation Method:	Minimum Curvature
Well Error:	0.00 usft	Output errors are at	2.00 sigma
Reference Wellbore	OH	Database:	USA EDM 5000 Multi Users DB
Reference Design:	PLAN #1	Offset TVD Reference:	Offset Datum

Summary						
Site Name Offset Well - Wellbore - Design	Reference Measured Depth (usft)	Offset Measured Depth (usft)	Distance Between Centres (usft)	Distance Between Ellipses (usft)	Separation Factor	Warning
S32-T2N-R68W						
Williams 18-29 - KMG WELL - SURVEYS						Out of range
Williams 23-20 - KMG WELL - SURVEYS						Out of range
Williams 24-20 - KMG WELL - SURVEYS						Out of range
Williams 24-20X - KMG WELL - SURVEYS						Out of range
Williams 25-20 - KMG WELL - SURVEYS						Out of range
Williams 35-20 - KMG WELL - SURVEYS						Out of range
Williams 36-20 - KMG WELL - SURVEYS						Out of range
Williams 39-20 - KMG WELL - SURVEYS	8,109.05	7,525.91	1,126.69	1,083.30	25.968	CC, ES
Williams 39-20 - KMG WELL - SURVEYS	8,600.00	7,530.91	1,228.99	1,177.78	23.996	SF
Williams 4-29 - KMG WELL - SURVEYS						Out of range
Williams 7-20 - KMG WELL - SURVEYS						Out of range
Williams 8-20 - KMG WELL - SURVEYS	10,268.80	7,730.56	1,805.20	1,717.32	20.542	CC
Williams 8-20 - KMG WELL - SURVEYS	10,300.00	7,731.25	1,805.47	1,717.25	20.465	ES
Williams 8-20 - KMG WELL - SURVEYS	10,500.00	7,735.56	1,819.94	1,729.97	20.230	SF
Williams 9-20 - KMG WELL - SURVEYS	8,885.14	7,351.18	1,677.14	1,625.52	32.491	CC
Williams 9-20 - KMG WELL - SURVEYS	8,900.00	7,351.13	1,677.20	1,625.45	32.409	ES
Williams 9-20 - KMG WELL - SURVEYS	9,300.00	7,349.73	1,727.68	1,672.43	31.266	SF
Woolley 41-7 - CPR WELL - GYRO						Out of range
Woolley 42-7 KPK - KPK WELL - SURVEYS						Out of range

Cathedral Energy Services

Anticollision Summary Report

Company:	Crestone Peak Resources	Local Co-ordinate Reference:	Well DREAM WEAVER North 3E-21H-N268 - Slot DREAM WEAVER North 3E-21H-N268 SHL
Project:	DJ BASIN	TVD Reference:	23' KB @ 4924.00usft (Original Well Elev)
Reference Site:	S21-T2N-R68W	MD Reference:	23' KB @ 4924.00usft (Original Well Elev)
Site Error:	0.00 usft	North Reference:	True
Reference Well:	DREAM WEAVER North 3E-21H-N268	Survey Calculation Method:	Minimum Curvature
Well Error:	0.00 usft	Output errors are at	2.00 sigma
Reference Wellbore	OH	Database:	USA EDM 5000 Multi Users DB
Reference Design:	PLAN #1	Offset TVD Reference:	Offset Datum

Summary

Site Name Offset Well - Wellbore - Design	Reference Measured Depth (usft)	Offset Measured Depth (usft)	Distance Between Centres (usft)	Distance Between Ellipses (usft)	Separation Factor	Warning
S7-T1N-R68W (Woolley-S/B/Morgan Hills)						
BAILEY 8-8-1 (EXISTING) - CPR WELL - SURVEYS						Out of range
BEARDEN 0-6-6 (EXISTING) - CPR WELL - SURVEYS						Out of range
BEARDEN 1 (EXISTING) - CPR WELL - GYRO						Out of range
BEARDEN 13-6 (EXISTING) - CPR WELL - SURVEYS						Out of range
BEARDEN 14-6 (EXISTING) - CPR WELL - SURVEYS						Out of range
BEARDEN 23-6 (EXISTING) - ENCANA WELL - GYRO						Out of range
BEARDEN 24-6 (EXISTING) - CPR WELL - CPR WELL						Out of range
BEARDEN 2-4-6 (EXISTING) - CPR WELL - SURVEYS						Out of range
BEARDEN 2-8-6 (EXISTING) - CPR WELL - SURVEYS						Out of range
BECKY 1 (EXISTING) - FOUNDATION WELL - NO SUR						Out of range
BECKY 2-6 (EXISTING) - EXTRACTION WELL - GYRO						Out of range
BECKY 5-6 (EXISTING) - FOUNDATION WELL - NO SU						Out of range
BECKY 7-6 (EXISTING) - EXTRACTION WELL - GYRO						Out of range
BILLINGS 21-7 (EXISTING) - KPK WELL - SURVEYS						Out of range
BULTHAUP 10-6 (EXISTING) - KMG WELL - SURVEYS						Out of range
BULTHAUP 15-6 (EXISTING) - KMG WELL - GYRO						Out of range
BULTHAUP 17-6 (EXISTING) - KMG WELL - SURVEYS						Out of range
BULTHAUP 21-6 (EXISTING) - KMG WELL - SURVEYS						Out of range
BULTHAUP 23-6 (EXISTING) - KMG WELL - SURVEYS						Out of range
BULTHAUP 27-6 (EXISTING) - KMG WELL - SURVEYS						Out of range
CANYON CREEK 43-13 (EXISTING) - CPR WELL - SUR						Out of range
CANYON CREEK 8-6-13X (EXISTING) - CPR WELL - S						Out of range
CHAMPLIN-86-AMOCO 1 (EXISTING) - AMOCO - SURV						Out of range
COAL CREEK 6-0-19 (EXISTING) - CPR WELL - STK						Out of range
COAL CREEK 6-0-19 (EXISTING) - OH - SURVEYS						Out of range
COMMONS 28-19 (EXISTING) - KMG WELL - SURVEYS						Out of range
ERIE CHAMPLIN 18-9 (EXISTING) - EXISTING - SURVE						Out of range
ERIE CHAMPLIN B UNIT 1 - CPR WELL - GYRO						Out of range
ERIE CHAMPLIN B UNIT 2 - CPR WELL - GYRO						Out of range
I & J 7-6 (EXISTING) - KMG WELL - GYRO						Out of range
Morgan Hills 1A-7H-A168 - HZ - FINAL						Out of range
Morgan Hills 1B-7H-A168 - HZ - FINAL						Out of range
Morgan Hills 1C-7H-A168 - HZ - FINAL						Out of range
Morgan Hills 1D-7H-A168 - HZ - FINAL						Out of range
Morgan Hills 1E-7H-A168 - HZ - FINAL						Out of range
Morgan Hills 1F-7H-A168 - HZ - FINAL						Out of range
Morgan Hills 1G-7H-A168 - HZ - FINAL						Out of range
Morgan Hills 1H-7H-A168 - HZ - FINAL						Out of range
Morgan Hills 1I-7H-A168 - OH - FINAL						Out of range
SOSA 11-18 (EXISTING) - CPR WELL - SURVEYS						Out of range
SOSA 12-18 (EXISTING) - CPR WELL - SURVEYS						Out of range
SOSA 21-18 (EXISTING) - CPR WELL - SURVEYS						Out of range
SOSA 22-18 (EXISTING) - CPR WELL - SURVEYS						Out of range
SOSA A UNIT 1 (EXISTING) - CPR WELL - GYRO						Out of range
TALLGRASS 33-17 (EXISTING) - KMG WELL - SURVEY						Out of range
THOMAS 14-7(EXISTING) - CPR WELL - SURVEYS						Out of range
THOMAS 24-7 (EXISTING) - CPR WELL - SURVEYS						Out of range
THOMAS 2-8-7 (EXISTING) - CPR WELL - SURVEYS						Out of range
THOMAS 33-7 (EXISTING) - CPR WELL - SURVEYS						Out of range
THOMAS 7-12 (EXISTING) - CPR WELL - GYRO						Out of range
Thomas 7-14 (AL) - Existing - NO SURVEYS						Out of range

CC - Min centre to center distance or convergent point, SF - min separation factor, ES - min ellipse separation

Cathedral Energy Services

Anticollision Summary Report

Company:	Crestone Peak Resources	Local Co-ordinate Reference:	Well DREAM WEAVER North 3E-21H-N268 - Slot DREAM WEAVER North 3E-21H-N268 SHL
Project:	DJ BASIN	TVD Reference:	23' KB @ 4924.00usft (Original Well Elev)
Reference Site:	S21-T2N-R68W	MD Reference:	23' KB @ 4924.00usft (Original Well Elev)
Site Error:	0.00 usft	North Reference:	True
Reference Well:	DREAM WEAVER North 3E-21H-N268	Survey Calculation Method:	Minimum Curvature
Well Error:	0.00 usft	Output errors are at	2.00 sigma
Reference Wellbore	OH	Database:	USA EDM 5000 Multi Users DB
Reference Design:	PLAN #1	Offset TVD Reference:	Offset Datum

Summary						
Site Name	Reference Measured Depth (usft)	Offset Measured Depth (usft)	Distance Between Centres (usft)	Distance Between Ellipses (usft)	Separation Factor	Warning
Offset Well - Wellbore - Design						
S7-T1N-R68W (Woolley-S/B/Morgan Hills)						
THOMAS E UNIT 1 (EXISTING) - CPR WELL - GYRO						Out of range
THOMAS E UNIT 2 - VESSELS WELL - INC ONLY						Out of range
THOMAS K UNIT 1 (EXISTING) - EXISTING - NO SURV						Out of range
WHEELER G UNIT 1 - CPR - GYRO						Out of range
WIGGETT 13-1 - CPR - GYRO						Out of range
WIGGETT 8-2-13 (EXISTING) - CPR WELL - SURVEYS						Out of range
WOOLLEY 11-7 (EXISTING) - CPR WELL - SURVEYS						Out of range
WOOLLEY 12-7 (EXISTING) - CPR WELL - GYRO						Out of range
WOOLLEY 21-7 (EXISTING) - CPR WELL - GYRO						Out of range
WOOLLEY 22-7 (EXISTING) - CPR WELL - SURVEYS						Out of range
WOOLLEY 2-4-7 (EXISTING) - CPR WELL - SURVEYS						Out of range
WOOLLEY 4-0-7 (EXISTING) - CPR WELL - SURVEYS						Out of range
WOOLLEY 41-7 (EXISTING) - CPR WELL - GYRO						Out of range
WOOLLEY 42-7 (EXISTING) - CPR WELL - GYRO						Out of range
WOOLLEY 42-7 KPK (EXISTING) - KPK WELL - SURVE						Out of range
WOOLLEY A 1-7 (EXISTING) - CPR WELL - GYRO						Out of range
WOOLLEY F UNIT 1 (EXISTING) - CPR WELL - GYRO						Out of range
Woolley-Becky 2A-7H-E168 - Hz - FINAL						Out of range
Woolley-Becky 2B-7H-E168 - Hz - FINAL						Out of range
Woolley-Becky 2C-7H-E168 - Hz - FINAL						Out of range
Woolley-Becky 2D-7H-E168 - Hz - FINAL						Out of range
Woolley-Becky 2E-7H-E168 - Hz - FINAL						Out of range
Woolley-Becky 2F-7H-E168 - Hz - FINAL						Out of range
Woolley-Becky 2G-7H-E168 - Hz - FINAL						Out of range
Woolley-Becky 2H-7H-E168 - Hz - FINAL						Out of range
Woolley-Sosa 2A-7H-E168 - OH - FINAL						Out of range
Woolley-Sosa 2B-7H-E168 - HZ - FINAL						Out of range
Woolley-Sosa 2C-7H-E168 - HZ - FINAL						Out of range
Woolley-Sosa 2D-7H-E168 - HZ - FINAL						Out of range
Woolley-Sosa 2E-7H-E168 - HZ - FINAL						Out of range
Woolley-Sosa 2F-7H-E168 - HZ - FINAL						Out of range
Woolley-Sosa 2G-7H-E168 - HZ - FINAL						Out of range

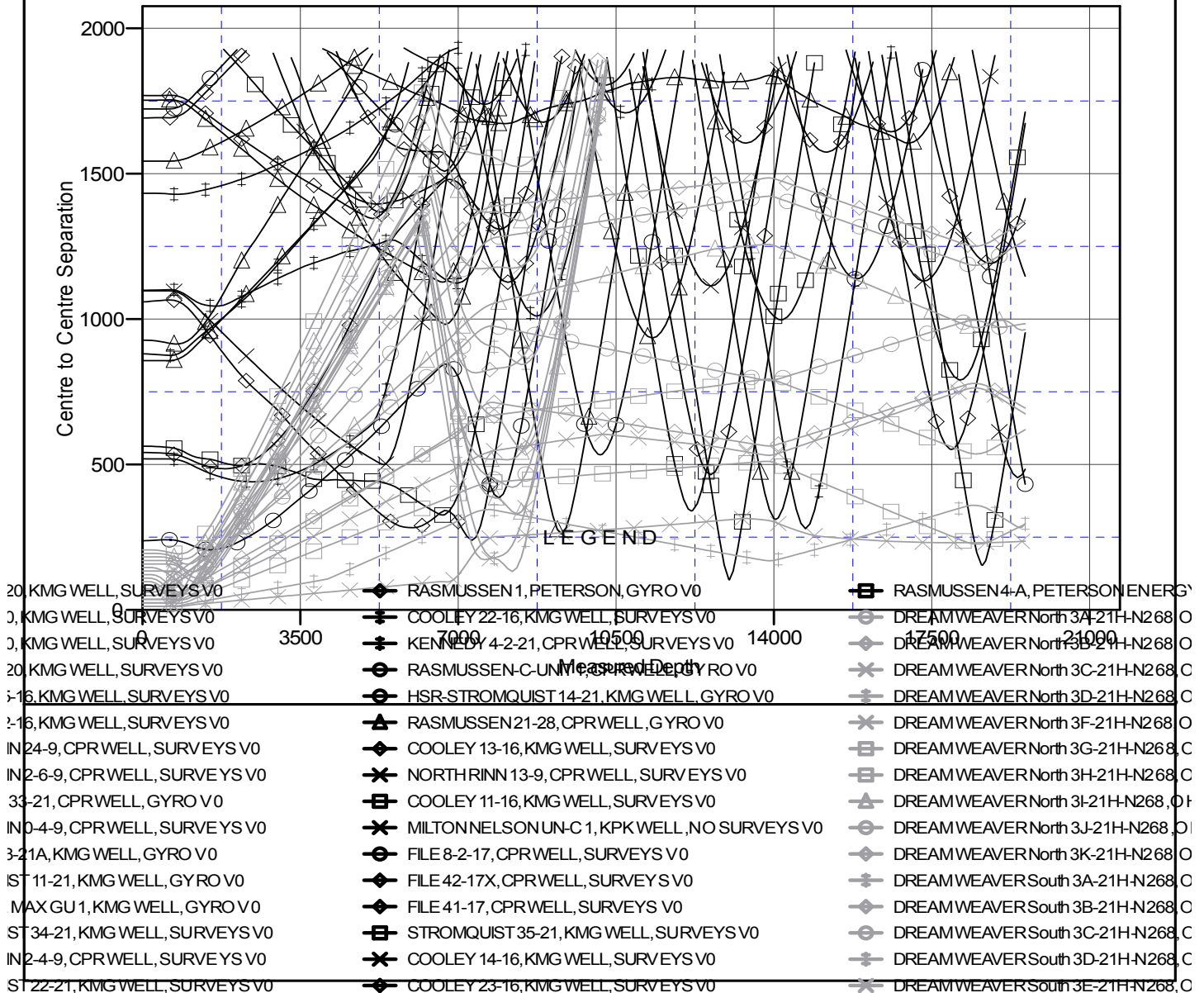
Cathedral Energy Services
Anticollision Summary Report

Company:	Crestone Peak Resources	Local Co-ordinate Reference:	Well DREAM WEAVER North 3E-21H-N268 - Slot DREAM WEAVER North 3E-21H-N268 SHL
Project:	DJ BASIN	TVD Reference:	23' KB @ 4924.00usft (Original Well Elev)
Reference Site:	S21-T2N-R68W	MD Reference:	23' KB @ 4924.00usft (Original Well Elev)
Site Error:	0.00 usft	North Reference:	True
Reference Well:	DREAM WEAVER North 3E-21H-N268	Survey Calculation Method:	Minimum Curvature
Well Error:	0.00 usft	Output errors are at	2.00 sigma
Reference Wellbore	OH	Database:	USA EDM 5000 Multi Users DB
Reference Design:	PLAN #1	Offset TVD Reference:	Offset Datum

Reference Depths are relative to 23' KB @ 4924.00usft (Original Well E
Offset Depths are relative to Offset Datum
Central Meridian is -105.500000

Coordinates are relative to: DREAM WEAVER North 3E-21H-N268 - Slot DREAM
Coordinate System is US State Plane 1983, Colorado Northern Zone
Grid Convergence at Surface is: 0.32°

Ladder Plot



CC - Min centre to center distance or convergent point, SF - min separation factor, ES - min ellipse separation

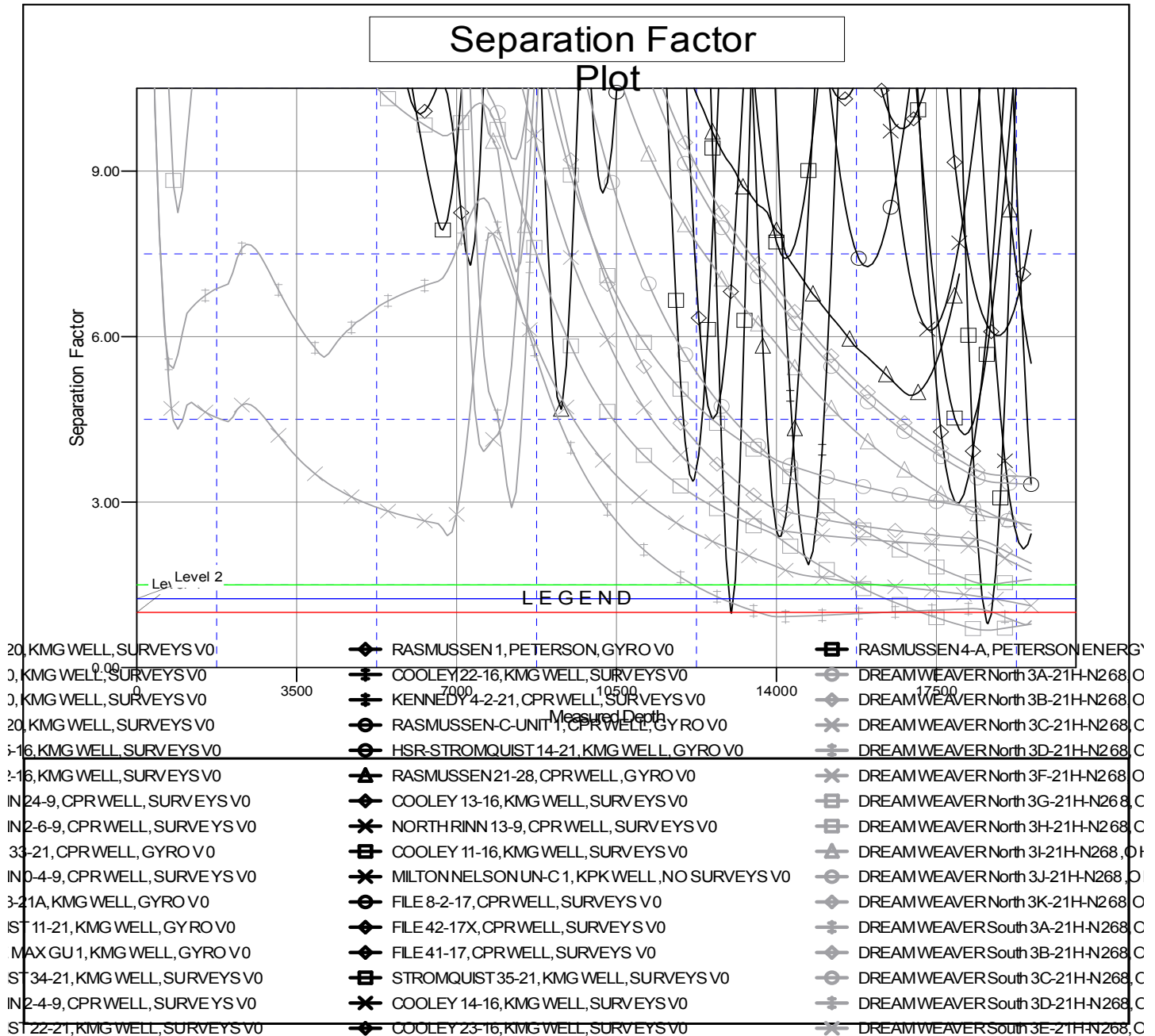
Cathedral Energy Services

Anticollision Summary Report

Company:	Crestone Peak Resources	Local Co-ordinate Reference:	Well DREAM WEAVER North 3E-21H-N268 - Slot DREAM WEAVER North 3E-21H-N268 SHL
Project:	DJ BASIN	TVD Reference:	23' KB @ 4924.00usft (Original Well Elev)
Reference Site:	S21-T2N-R68W	MD Reference:	23' KB @ 4924.00usft (Original Well Elev)
Site Error:	0.00 usft	North Reference:	True
Reference Well:	DREAM WEAVER North 3E-21H-N268	Survey Calculation Method:	Minimum Curvature
Well Error:	0.00 usft	Output errors are at	2.00 sigma
Reference Wellbore	OH	Database:	USA EDM 5000 Multi Users DB
Reference Design:	PLAN #1	Offset TVD Reference:	Offset Datum

Reference Depths are relative to 23' KB @ 4924.00usft (Original Well E
Offset Depths are relative to Offset Datum
Central Meridian is -105.500000

Coordinates are relative to: DREAM WEAVER North 3E-21H-N268 - Slot DREAM
Coordinate System is US State Plane 1983, Colorado Northern Zone
Grid Convergence at Surface is: 0.32°



CC - Min centre to center distance or convergent point, SF - min separation factor, ES - min ellipse separation