

DREAM WEAVER NORTH 3B-21H-N268 WELL LOCATION EXHIBIT

BHL: 2180' FSL
480' FWL SEC. 9

2 1/2" ALUM. CAP
RLS 11372, 2005

N89°51'10"E 2643.07'

N89°51'10"E 2642.99'

2 1/2" ALUM CAP
PLS 24667

SURFACE LOCATION:
GROUND ELEVATION=4901'
NAD83
LATITUDE:40.120037° N
LONGITUDE:105.011335° W

TOP OF PRODUCTION ZONE LOCATION:
NAD83
LATITUDE:40.119708° N
LONGITUDE:105.016253° W

BOTTOM HOLE LOCATION:
NAD83
LATITUDE:40.151943° N
LONGITUDE:105.015874° W

21

2 1/2" ALUM CAP
LS 24667, 1994

2 1/2" ALUM CAP 430' WC
PLS 38345, 2014

2 1/2" ALUM CAP
LS 24667, 1994

DREAM WEAVER NORTH 3B-21H-N268

NOTES:
BH LOCATION PROVIDED BY CLIENT.
LAND SURFACE USE- HAY MEADOW
EXISTING WELL HSR-STROMQUIST 14-21 IS
218' SW AT 1127' FSL & 1568' FWL
SEE LOCATION DRAWING FOR ADDITIONAL
IMPROVEMENTS WITHIN 500'

PDOP=1.8
GPS OPERATOR: DOMINICK DAVIS

3/4" BRASS CAP
BLM, 1952

S89°54'57"W 2659.46'

3/4" BRASS CAP
BLM, 1952

N89°57'05"W 2641.98'

3/4" BRASS CAP
BLM, 1952

LEGEND

- = EXISTING MONUMENT
- = CALCULATED POSITION
- = PROPOSED WELL
- ◆ = EXISTING WELL
- ▲ = TOP OF PRODUCTION ZONE
- TPZ = TOP OF PRODUCTION ZONE
- BHL = BOTTOM HOLE LOCATION
- WC = WITNESS CORNER

NOTES:

- THIS FIELD SURVEY CONFORMS TO THE MINIMUM STANDARDS SET BY THE C.O.G.C.C., RULE NO. 215
- ALL DISTANCES AND BEARINGS SHOWN HEREON ARE GROUND VALUES AS GPS MEASURED IN THE FIELD, WITH TIES TO WELLS MEASURED PERPENDICULAR TO LINES SHOWN HEREON. THIS LOW DISTORTION PROJECTION (LDP) IS BASED ON THE NORTH AMERICAN DATUM OF 1983, U.S. SURVEY FOOT WITH A LATITUDE ORIGIN OF 40.131498°N, A CENTRAL MERIDIAN LONGITUDE OF 104.998741°W, AND A SCALE FACTOR ON THE CENTRAL MERIDIAN OF 1.000232 (EXACT). THE LDP BASIS OF BEARINGS IS GEODETIC NORTH.
- FIELD VERIFICATION OF MONUMENTS COMPLETED WITHIN 1 YEAR OF SIGNATURE DATE, UNLESS OTHERWISE NOTED.

**WELL DREAM WEAVER NORTH 3B-21H-N268
TO BE LOCATED 1148' FSL & 1785' FWL**

I, ROBERT J. GUFFEY, A LICENSED PROFESSIONAL LAND SURVEYOR IN THE STATE OF COLORADO, DO HEREBY STATE TO CRESTONE PEAK RESOURCES THAT THE WELL LOCATION EXHIBIT SHOWN HEREON WAS PREPARED BY ME OR UNDER MY DIRECT SUPERVISION AND THE DRAWING SHOWN HEREON ACCURATELY DEPICTS THE PROPOSED LOCATION OF THE WELL. THIS EXHIBIT MEETS THE REQUIREMENTS OF A GIS LAND POSITION AS DEFINED BY SECTION 38-51-102 (7.5) C.R.S. AND AS SUCH PER SECTION 38-51-109.3 C.R.S. CANNOT BE RELIED UPON TO DETERMINE OWNERSHIP.

ROBERT J. GUFFEY, PLS 20680
COLORADO LICENSED PROFESSIONAL LAND SURVEYOR
FOR AND ON BEHALF OF P.F.S., LLC
d b a. ASCENT GEOMATICS SOLUTIONS



NOTICE: ACCORDING TO COLORADO LAW YOU MUST COMMENCE ANY LEGAL ACTION BASED UPON ANY DEFECT IN THIS SURVEY WITHIN THREE YEARS AFTER YOU FIRST DISCOVER SUCH DEFECT IN NO EVENT MAY ANY ACTION BASED UPON ANY DEFECT IN THIS SURVEY BE COMMENCED MORE THAN TEN YEARS FROM THIS SAID DATE OF THIS CERTIFICATION SHOWN HEREON.



FIELD DATE
02-13-18
DRAWING DATE
05-23-18
BY
CSG
CHECKED
RMC

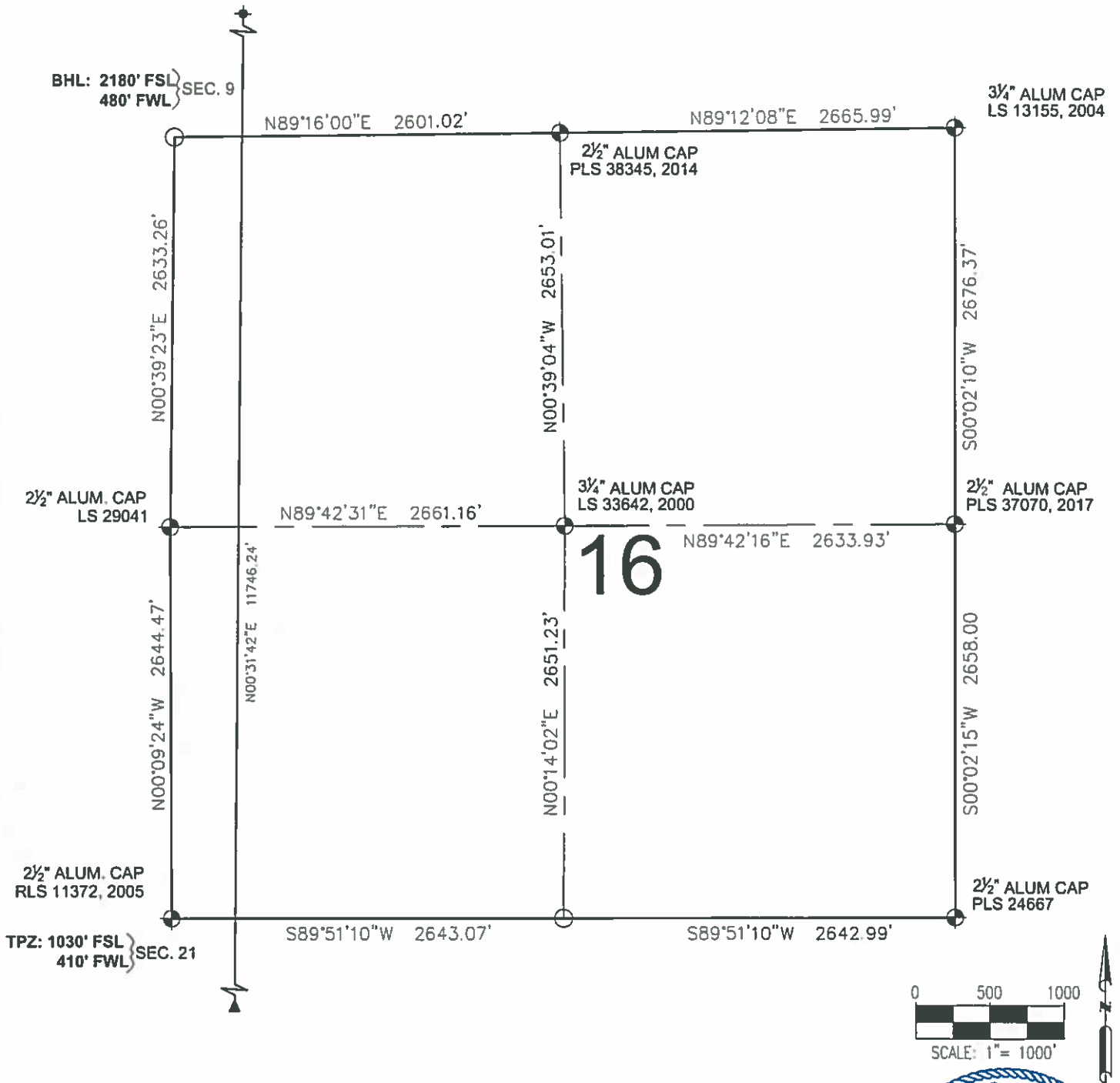
WELL NAME
DREAM WEAVER NORTH 3B-21H-N268
SURFACE LOCATION
SE 1/4 SW 1/4 SEC. 21, T2N, R68W, 6TH P.M.
WELD COUNTY, COLORADO

PREPARED FOR:



SHEET 1 OF 3

DREAM WEAVER NORTH 3B-21H-N268 WELL LOCATION EXHIBIT



LEGEND

- ⊕ = EXISTING MONUMENT
- = CALCULATED POSITION
- = PROPOSED WELL
- ◆ = EXISTING WELL
- ⚓ = BOTTOM HOLE
- ▲ = TOP OF PRODUCTION ZONE
- TPZ = TOP OF PRODUCTION ZONE
- BHL = BOTTOM HOLE LOCATION
- WC = WITNESS CORNER

ROBERT J. GUFFEY, PLS 20680
COLORADO LICENSED PROFESSIONAL LAND SURVEYOR
FOR AND ON BEHALF OF P.F.S., LLC
d.b.a. ASCENT GEOMATICS SOLUTIONS



SHEET 2 OF 3



7535 Hilltop Circle
Denver, CO 80221
(303) 924-7724
www.ascentgeomatics.com

FIELD DATE:

02-13-18

DRAWING DATE:

05-23-18

BY:

CSG

CHECKED:

RMC

WELL NAME:

DREAM WEAVER NORTH 3B-21H-N268

SURFACE LOCATION:

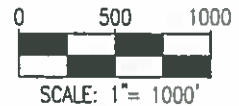
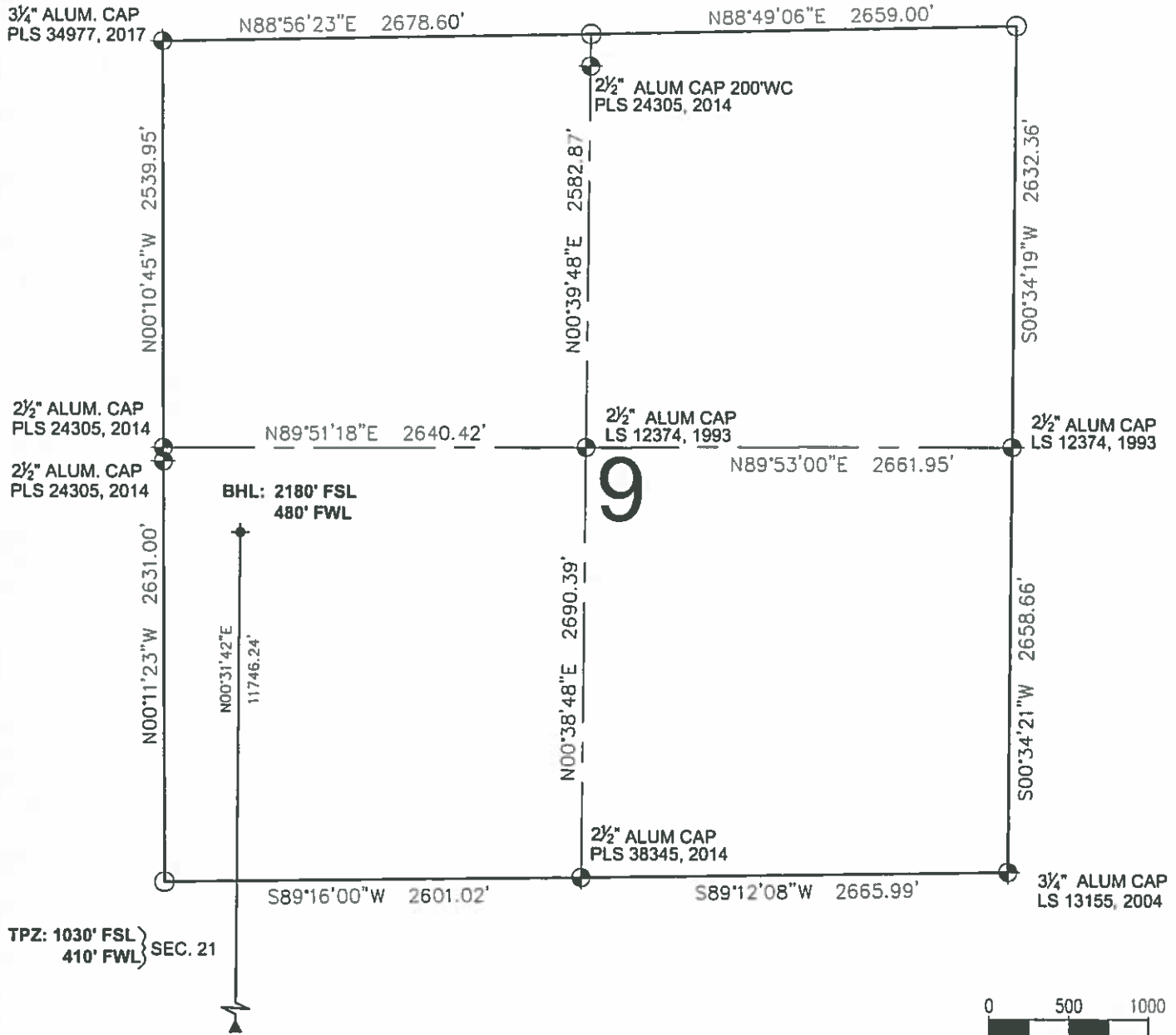
SE 1/4 SW 1/4 SEC. 21, T2N, R68W, 6TH P.M.
WELD COUNTY, COLORADO

PREPARED FOR:



CRESTONE PEAK
RESOURCES

DREAM WEAVER NORTH 3B-21H-N268 WELL LOCATION EXHIBIT



LEGEND

- ⊙ = EXISTING MONUMENT
 - = CALCULATED POSITION
 - = PROPOSED WELL
 - ◆ = EXISTING WELL
 - ⬆ = BOTTOM HOLE
 - ▲ = TOP OF PRODUCTION ZONE
 - TPZ = TOP OF PRODUCTION ZONE
 - BHL = BOTTOM HOLE LOCATION
 - WC = WITNESS CORNER
- ROBERT J. GUFFEY, PLS 20680
COLORADO LICENSED PROFESSIONAL LAND SURVEYOR
FOR AND ON BEHALF OF P.F.S., LLC
d.b.a. ASCENT GEOMATICS SOLUTIONS



SHEET 3 OF 3



7535 HiTop Circle
Denver, CO 80221
(303) 928-7728
www.ascentgeomatics.com

FIELD DATE

02-13-18

DRAWING DATE

05-23-18

BY

CSG

CHECKED

RMC

WELL NAME

DREAM WEAVER NORTH 3B-21H-N268

SURFACE LOCATION

SE 1/4 SW 1/4 SEC. 21, T2N, R68W, 6TH P.M.

WELD COUNTY, COLORADO

PREPARED FOR



CRESTONE PEAK
RESOURCES