



CRESTONE PEAK  
RESOURCES

#### SECTION DETAILS

Sec	MD	Inc	Azi	TVD	+N/-S	+E/-W	Dleg	TFace	VSec	Target
1	0.00	0.00	0.00	0.00	0.00	0.00	0.00	0.00	0.00	
2	300.00	0.00	0.00	300.00	0.00	0.00	0.00	0.00	0.00	
3	980.93	13.62	235.81	974.53	-45.26	-66.62	2.00	235.81	-37.76	
4	6919.79	13.62	235.81	6746.42	-831.04	-1223.31	0.00	0.00	-693.37	
5	8141.10	90.00	0.52	7543.00	-119.89	-1375.50	8.00	123.95	30.09	DREAM WEAVER North 3B-21H-N268 TPZ
6	19884.15	90.00	0.52	7543.00	11622.67	-1268.82	0.00	0.00	11691.72	DREAM WEAVER North 3B-21H-N268 BHL

PLAN #3  
DREAM WEAVER North 3B-21H-N268  
23' KB @ 4924.00ust (Original Well Elev)  
Ground Level @ 4901.00

Well DREAM WEAVER North 3B-21H-N268 - Slot DREAM WEAVER North 3B-21H-N268 SHL, True North

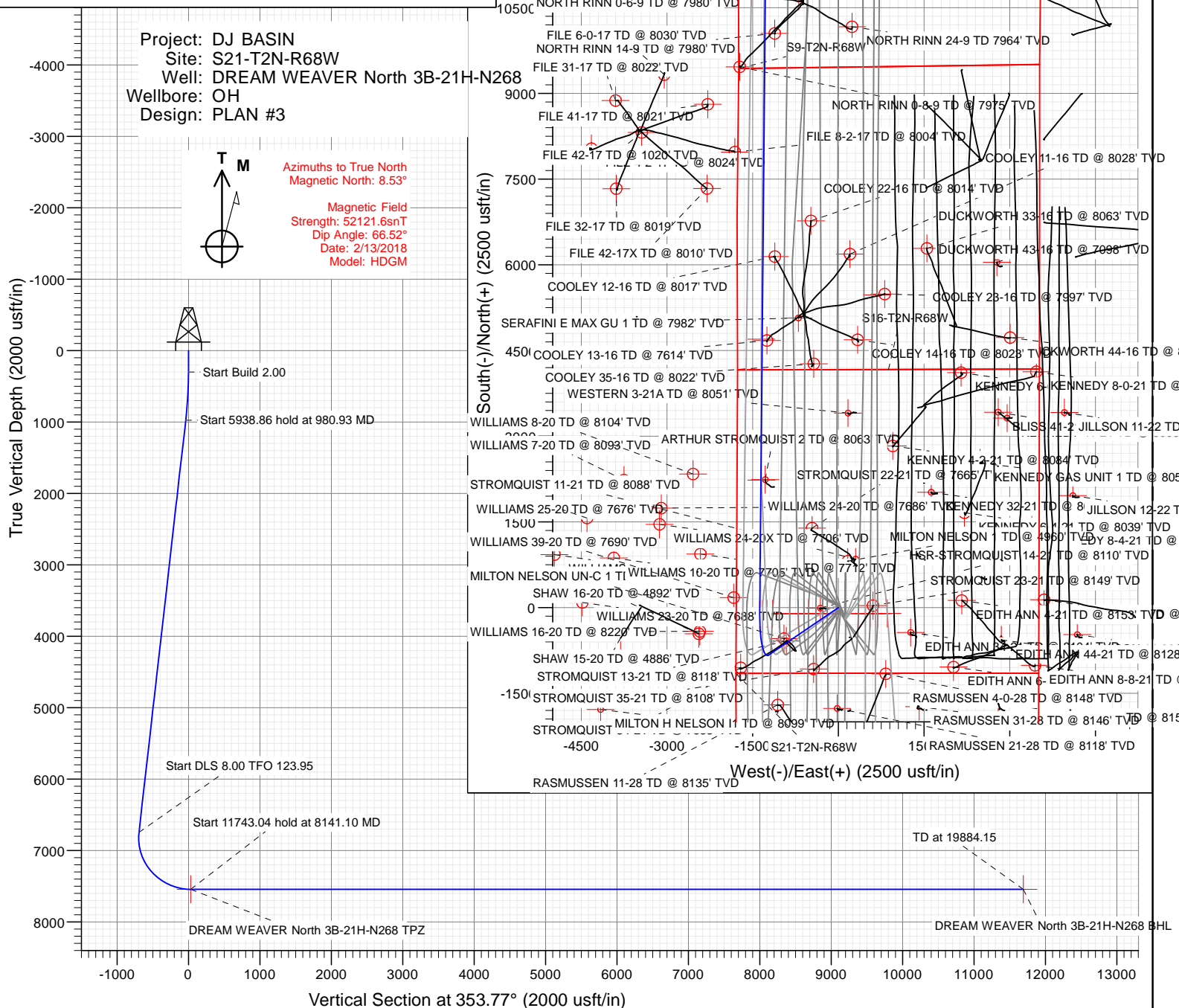
Type	Target	TD	No Target (Freehand)	Azimuth	Origin	Type	N/S	E/W	From	TVD
Name	DREAM WEAVER North 3B-21H-N268 BHL	TVD		353.77	Slot		0.00	0.00	0.00	
	DREAM WEAVER North 3B-21H-N268 TPZ	7543.00		11622.67			-119.89	-1375.50	40.11943	-105.016253

Project: DJ BASIN  
Site: S21-T2N-R68W  
Well: DREAM WEAVER North 3B-21H-N268  
Wellbore: OH  
Design: PLAN #3



Azimuths to True North  
Magnetic North: 8.53°

Magnetic Field  
Strength: 52121.6snT  
Dip Angle: 66.52°  
Date: 2/13/2018  
Model: HDGM



#### WELL DETAILS: DREAM WEAVER North 3B-21H-N268

+N/-S	+E/-W	Northing	Easting	Latitude	Longitude
0.00	0.00	1286950.09	3136659.63	40.120037	-105.011335

CATHEDRAL



# Cathedral Energy Services

## Planning Report

<b>Database:</b>	USA EDM 5000 Multi Users DB	<b>Local Co-ordinate Reference:</b>	Well DREAM WEAVER North 3B-21H-N268 - SI
<b>Company:</b>	Crestone Peak Resources	<b>TVD Reference:</b>	23' KB @ 4924.00usft (Original Well Elev)
<b>Project:</b>	DJ BASIN	<b>MD Reference:</b>	23' KB @ 4924.00usft (Original Well Elev)
<b>Site:</b>	S21-T2N-R68W	<b>North Reference:</b>	True
<b>Well:</b>	DREAM WEAVER North 3B-21H-N268	<b>Survey Calculation Method:</b>	Minimum Curvature
<b>Wellbore:</b>	OH		
<b>Design:</b>	PLAN #3		

Project	DJ BASIN		
Map System:	US State Plane 1983	System Datum:	Mean Sea Level
Geo Datum:	North American Datum 1983		
Map Zone:	Colorado Northern Zone		

Site		S21-T2N-R68W			
Site Position:		Northing:	1,286,960.17 usft	Latitude:	40.120065
From:	Lat/Long	Easting:	3,136,653.11 usft	Longitude:	-105.011358
Position Uncertainty:	0.00 usft	Slot Radius:	13-3/16 "	Grid Convergence:	0.32 °

Well	DREAM WEAVER North 3B-21H-N268 - Slot DREAM WEAVER North 3B-21H-N268 SHL					
Well Position	+N/-S	0.00 usft	Northing:	1,286,950.09 usft	Latitude:	40.120037
	+E/-W	0.00 usft	Easting:	3,136,659.63 usft	Longitude:	-105.011335
Position Uncertainty		0.00 usft	Wellhead Elevation:	usft	Ground Level:	4,901.00 usft

Wellbore	OH				
Magnetics	Model Name	Sample Date	Declination (°)	Dip Angle (°)	Field Strength (nT)
	HDGM	2/13/2018	8.53	66.52	52,121.60000000

Design	PLAN #3			
Audit Notes:				
Version:	Phase:	PLAN	Tie On Depth:	0.00
Vertical Section:	Depth From (TVD) (usft)	+N/-S (usft)	+E/-W (usft)	Direction (°)
	0.00	0.00	0.00	353.77

Plan Sections										
Measured Depth (usft)	Inclination (°)	Azimuth (°)	Vertical Depth (usft)	+N/-S (usft)	+E/-W (usft)	Dogleg Rate (°/100usft)	Build Rate (°/100usft)	Turn Rate (°/100usft)	TFO (°)	Target
0.00	0.00	0.00	0.00	0.00	0.00	0.00	0.00	0.00	0.00	
300.00	0.00	0.00	300.00	0.00	0.00	0.00	0.00	0.00	0.00	
980.93	13.62	235.81	974.53	-45.26	-66.62	2.00	2.00	0.00	235.81	
6,919.79	13.62	235.81	6,746.42	-831.04	-1,223.31	0.00	0.00	0.00	0.00	
8,141.10	90.00	0.52	7,543.00	-119.89	-1,375.50	8.00	6.25	10.21	123.95	DREAM WEAVER No
19,884.15	90.00	0.52	7,543.00	11,622.67	-1,268.82	0.00	0.00	0.00	0.00	DREAM WEAVER No

# Cathedral Energy Services

## Planning Report

<b>Database:</b>	USA EDM 5000 Multi Users DB	<b>Local Co-ordinate Reference:</b>	Well DREAM WEAVER North 3B-21H-N268 - SI
<b>Company:</b>	Crestone Peak Resources	<b>TVD Reference:</b>	23' KB @ 4924.00usft (Original Well Elev)
<b>Project:</b>	DJ BASIN	<b>MD Reference:</b>	23' KB @ 4924.00usft (Original Well Elev)
<b>Site:</b>	S21-T2N-R68W	<b>North Reference:</b>	True
<b>Well:</b>	DREAM WEAVER North 3B-21H-N268	<b>Survey Calculation Method:</b>	Minimum Curvature
<b>Wellbore:</b>	OH		
<b>Design:</b>	PLAN #3		

### Planned Survey

Measured Depth (usft)	Inclination (°)	Azimuth (°)	Vertical Depth (usft)	+N/-S (usft)	+E/-W (usft)	Vertical Section (usft)	Dogleg Rate (°/100usft)	Build Rate (°/100u)	Comments / Formations
0.00	0.00	0.00	0.00	0.00	0.00	0.00	0.00	0.00	
100.00	0.00	0.00	100.00	0.00	0.00	0.00	0.00	0.00	
200.00	0.00	0.00	200.00	0.00	0.00	0.00	0.00	0.00	
300.00	0.00	0.00	300.00	0.00	0.00	0.00	0.00	0.00	
400.00	2.00	235.81	399.98	-0.98	-1.44	-0.82	2.00	2.00	
500.00	4.00	235.81	499.84	-3.92	-5.77	-3.27	2.00	2.00	
600.00	6.00	235.81	599.45	-8.82	-12.98	-7.36	2.00	2.00	
700.00	8.00	235.81	698.70	-15.67	-23.06	-13.07	2.00	2.00	
800.00	10.00	235.81	797.47	-24.46	-36.00	-20.41	2.00	2.00	
900.00	12.00	235.81	895.62	-35.18	-51.78	-29.35	2.00	2.00	
980.93	13.62	235.81	974.53	-45.26	-66.62	-37.76	2.00	2.00	
1,000.00	13.62	235.81	993.07	-47.78	-70.34	-39.87	0.00	0.00	
1,100.00	13.62	235.81	1,090.26	-61.01	-89.82	-50.91	0.00	0.00	
1,200.00	13.62	235.81	1,187.45	-74.25	-109.29	-61.95	0.00	0.00	
1,300.00	13.62	235.81	1,284.64	-87.48	-128.77	-72.99	0.00	0.00	
1,400.00	13.62	235.81	1,381.82	-100.71	-148.25	-84.03	0.00	0.00	
1,500.00	13.62	235.81	1,479.01	-113.94	-167.72	-95.06	0.00	0.00	
1,600.00	13.62	235.81	1,576.20	-127.17	-187.20	-106.10	0.00	0.00	
1,700.00	13.62	235.81	1,673.39	-140.40	-206.68	-117.14	0.00	0.00	
1,800.00	13.62	235.81	1,770.58	-153.63	-226.15	-128.18	0.00	0.00	
1,900.00	13.62	235.81	1,867.77	-166.86	-245.63	-139.22	0.00	0.00	
2,000.00	13.62	235.81	1,964.96	-180.09	-265.11	-150.26	0.00	0.00	
2,100.00	13.62	235.81	2,062.14	-193.33	-284.58	-161.30	0.00	0.00	
2,200.00	13.62	235.81	2,159.33	-206.56	-304.06	-172.34	0.00	0.00	
2,300.00	13.62	235.81	2,256.52	-219.79	-323.53	-183.38	0.00	0.00	
2,400.00	13.62	235.81	2,353.71	-233.02	-343.01	-194.42	0.00	0.00	
2,500.00	13.62	235.81	2,450.90	-246.25	-362.49	-205.46	0.00	0.00	
2,600.00	13.62	235.81	2,548.09	-259.48	-381.96	-216.50	0.00	0.00	
2,700.00	13.62	235.81	2,645.27	-272.71	-401.44	-227.54	0.00	0.00	
2,800.00	13.62	235.81	2,742.46	-285.94	-420.92	-238.58	0.00	0.00	
2,900.00	13.62	235.81	2,839.65	-299.17	-440.39	-249.61	0.00	0.00	
3,000.00	13.62	235.81	2,936.84	-312.41	-459.87	-260.65	0.00	0.00	
3,100.00	13.62	235.81	3,034.03	-325.64	-479.35	-271.69	0.00	0.00	
3,200.00	13.62	235.81	3,131.22	-338.87	-498.82	-282.73	0.00	0.00	
3,300.00	13.62	235.81	3,228.41	-352.10	-518.30	-293.77	0.00	0.00	
3,400.00	13.62	235.81	3,325.59	-365.33	-537.78	-304.81	0.00	0.00	
3,500.00	13.62	235.81	3,422.78	-378.56	-557.25	-315.85	0.00	0.00	
3,600.00	13.62	235.81	3,519.97	-391.79	-576.73	-326.89	0.00	0.00	
3,700.00	13.62	235.81	3,617.16	-405.02	-596.21	-337.93	0.00	0.00	
3,800.00	13.62	235.81	3,714.35	-418.25	-615.68	-348.97	0.00	0.00	
3,900.00	13.62	235.81	3,811.54	-431.49	-635.16	-360.01	0.00	0.00	
4,000.00	13.62	235.81	3,908.72	-444.72	-654.64	-371.05	0.00	0.00	
4,100.00	13.62	235.81	4,005.91	-457.95	-674.11	-382.09	0.00	0.00	
4,200.00	13.62	235.81	4,103.10	-471.18	-693.59	-393.13	0.00	0.00	
4,300.00	13.62	235.81	4,200.29	-484.41	-713.07	-404.16	0.00	0.00	
4,400.00	13.62	235.81	4,297.48	-497.64	-732.54	-415.20	0.00	0.00	
4,500.00	13.62	235.81	4,394.67	-510.87	-752.02	-426.24	0.00	0.00	
4,600.00	13.62	235.81	4,491.86	-524.10	-771.50	-437.28	0.00	0.00	
4,700.00	13.62	235.81	4,589.04	-537.33	-790.97	-448.32	0.00	0.00	
4,800.00	13.62	235.81	4,686.23	-550.57	-810.45	-459.36	0.00	0.00	
4,900.00	13.62	235.81	4,783.42	-563.80	-829.93	-470.40	0.00	0.00	
5,000.00	13.62	235.81	4,880.61	-577.03	-849.40	-481.44	0.00	0.00	

# Cathedral Energy Services

## Planning Report

<b>Database:</b>	USA EDM 5000 Multi Users DB	<b>Local Co-ordinate Reference:</b>	Well DREAM WEAVER North 3B-21H-N268 - SI
<b>Company:</b>	Crestone Peak Resources	<b>TVD Reference:</b>	23' KB @ 4924.00usft (Original Well Elev)
<b>Project:</b>	DJ BASIN	<b>MD Reference:</b>	23' KB @ 4924.00usft (Original Well Elev)
<b>Site:</b>	S21-T2N-R68W	<b>North Reference:</b>	True
<b>Well:</b>	DREAM WEAVER North 3B-21H-N268	<b>Survey Calculation Method:</b>	Minimum Curvature
<b>Wellbore:</b>	OH		
<b>Design:</b>	PLAN #3		

### Planned Survey

Measured Depth (usft)	Inclination (°)	Azimuth (°)	Vertical Depth (usft)	+N/-S (usft)	+E/-W (usft)	Vertical Section (usft)	Dogleg Rate (°/100usft)	Build Rate (°/100u)	Comments / Formations
5,100.00	13.62	235.81	4,977.80	-590.26	-868.88	-492.48	0.00	0.00	
5,200.00	13.62	235.81	5,074.99	-603.49	-888.36	-503.52	0.00	0.00	
5,300.00	13.62	235.81	5,172.18	-616.72	-907.83	-514.56	0.00	0.00	
5,400.00	13.62	235.81	5,269.36	-629.95	-927.31	-525.60	0.00	0.00	
5,500.00	13.62	235.81	5,366.55	-643.18	-946.79	-536.64	0.00	0.00	
5,600.00	13.62	235.81	5,463.74	-656.41	-966.26	-547.68	0.00	0.00	
5,700.00	13.62	235.81	5,560.93	-669.64	-985.74	-558.71	0.00	0.00	
5,800.00	13.62	235.81	5,658.12	-682.88	-1,005.22	-569.75	0.00	0.00	
5,900.00	13.62	235.81	5,755.31	-696.11	-1,024.69	-580.79	0.00	0.00	
6,000.00	13.62	235.81	5,852.49	-709.34	-1,044.17	-591.83	0.00	0.00	
6,100.00	13.62	235.81	5,949.68	-722.57	-1,063.64	-602.87	0.00	0.00	
6,200.00	13.62	235.81	6,046.87	-735.80	-1,083.12	-613.91	0.00	0.00	
6,300.00	13.62	235.81	6,144.06	-749.03	-1,102.60	-624.95	0.00	0.00	
6,400.00	13.62	235.81	6,241.25	-762.26	-1,122.07	-635.99	0.00	0.00	
6,500.00	13.62	235.81	6,338.44	-775.49	-1,141.55	-647.03	0.00	0.00	
6,600.00	13.62	235.81	6,435.63	-788.72	-1,161.03	-658.07	0.00	0.00	
6,700.00	13.62	235.81	6,532.81	-801.96	-1,180.50	-669.11	0.00	0.00	
6,800.00	13.62	235.81	6,630.00	-815.19	-1,199.98	-680.15	0.00	0.00	
6,900.00	13.62	235.81	6,727.19	-828.42	-1,219.46	-691.19	0.00	0.00	
6,919.79	13.62	235.81	6,746.42	-831.04	-1,223.31	-693.37	0.00	0.00	
7,000.00	11.34	263.95	6,824.81	-837.18	-1,238.98	-697.78	8.00	-2.85	
7,100.00	13.09	301.59	6,922.69	-832.28	-1,258.43	-690.79	8.00	1.75	
7,200.00	18.45	323.88	7,018.98	-813.53	-1,277.44	-670.09	8.00	5.36	
7,300.00	25.22	335.50	7,111.79	-781.31	-1,295.63	-636.09	8.00	6.77	
7,400.00	32.52	342.32	7,199.33	-736.24	-1,312.65	-589.44	8.00	7.30	
7,500.00	40.07	346.82	7,279.88	-679.20	-1,328.18	-531.05	8.00	7.55	
7,600.00	47.74	350.10	7,351.89	-611.29	-1,341.90	-462.05	8.00	7.67	
7,700.00	55.49	352.65	7,413.94	-533.85	-1,353.56	-383.80	8.00	7.75	
7,800.00	63.28	354.77	7,464.83	-448.37	-1,362.92	-297.82	8.00	7.79	
7,900.00	71.10	356.61	7,503.57	-356.53	-1,369.80	-205.77	8.00	7.82	
8,000.00	78.93	358.29	7,529.41	-260.10	-1,374.07	-109.45	8.00	7.83	
8,100.00	86.78	359.88	7,541.84	-160.97	-1,375.64	-10.73	8.00	7.84	
8,141.10	90.00	0.52	7,543.00	-119.89	-1,375.50	30.09	8.00	7.85	DREAM WEAVER North 3B-21H-N268 TPZ
8,200.00	90.00	0.52	7,543.00	-61.00	-1,374.96	88.58	0.00	0.00	
8,300.00	90.00	0.52	7,543.00	39.00	-1,374.06	187.88	0.00	0.00	
8,400.00	90.00	0.52	7,543.00	138.99	-1,373.15	287.19	0.00	0.00	
8,500.00	90.00	0.52	7,543.00	238.99	-1,372.24	386.50	0.00	0.00	
8,600.00	90.00	0.52	7,543.00	338.99	-1,371.33	485.80	0.00	0.00	
8,700.00	90.00	0.52	7,543.00	438.98	-1,370.42	585.11	0.00	0.00	
8,800.00	90.00	0.52	7,543.00	538.98	-1,369.51	684.42	0.00	0.00	
8,900.00	90.00	0.52	7,543.00	638.97	-1,368.61	783.72	0.00	0.00	
9,000.00	90.00	0.52	7,543.00	738.97	-1,367.70	883.03	0.00	0.00	
9,100.00	90.00	0.52	7,543.00	838.97	-1,366.79	982.34	0.00	0.00	
9,200.00	90.00	0.52	7,543.00	938.96	-1,365.88	1,081.65	0.00	0.00	
9,300.00	90.00	0.52	7,543.00	1,038.96	-1,364.97	1,180.95	0.00	0.00	
9,400.00	90.00	0.52	7,543.00	1,138.95	-1,364.06	1,280.26	0.00	0.00	
9,500.00	90.00	0.52	7,543.00	1,238.95	-1,363.16	1,379.57	0.00	0.00	
9,600.00	90.00	0.52	7,543.00	1,338.94	-1,362.25	1,478.87	0.00	0.00	
9,700.00	90.00	0.52	7,543.00	1,438.94	-1,361.34	1,578.18	0.00	0.00	
9,800.00	90.00	0.52	7,543.00	1,538.94	-1,360.43	1,677.49	0.00	0.00	
9,900.00	90.00	0.52	7,543.00	1,638.93	-1,359.52	1,776.79	0.00	0.00	
10,000.00	90.00	0.52	7,543.00	1,738.93	-1,358.61	1,876.10	0.00	0.00	

# Cathedral Energy Services

## Planning Report

<b>Database:</b>	USA EDM 5000 Multi Users DB	<b>Local Co-ordinate Reference:</b>	Well DREAM WEAVER North 3B-21H-N268 - SI
<b>Company:</b>	Crestone Peak Resources	<b>TVD Reference:</b>	23' KB @ 4924.00usft (Original Well Elev)
<b>Project:</b>	DJ BASIN	<b>MD Reference:</b>	23' KB @ 4924.00usft (Original Well Elev)
<b>Site:</b>	S21-T2N-R68W	<b>North Reference:</b>	True
<b>Well:</b>	DREAM WEAVER North 3B-21H-N268	<b>Survey Calculation Method:</b>	Minimum Curvature
<b>Wellbore:</b>	OH		
<b>Design:</b>	PLAN #3		

### Planned Survey

Measured Depth (usft)	Inclination (°)	Azimuth (°)	Vertical Depth (usft)	+N/-S (usft)	+E/-W (usft)	Vertical Section (usft)	Dogleg Rate (°/100usft)	Build Rate (°/100u)	Comments / Formations
10,100.00	90.00	0.52	7,543.00	1,838.92	-1,357.70	1,975.41	0.00	0.00	
10,200.00	90.00	0.52	7,543.00	1,938.92	-1,356.80	2,074.71	0.00	0.00	
10,300.00	90.00	0.52	7,543.00	2,038.92	-1,355.89	2,174.02	0.00	0.00	
10,400.00	90.00	0.52	7,543.00	2,138.91	-1,354.98	2,273.33	0.00	0.00	
10,500.00	90.00	0.52	7,543.00	2,238.91	-1,354.07	2,372.63	0.00	0.00	
10,600.00	90.00	0.52	7,543.00	2,338.90	-1,353.16	2,471.94	0.00	0.00	
10,700.00	90.00	0.52	7,543.00	2,438.90	-1,352.25	2,571.25	0.00	0.00	
10,800.00	90.00	0.52	7,543.00	2,538.89	-1,351.35	2,670.55	0.00	0.00	
10,900.00	90.00	0.52	7,543.00	2,638.89	-1,350.44	2,769.86	0.00	0.00	
11,000.00	90.00	0.52	7,543.00	2,738.89	-1,349.53	2,869.17	0.00	0.00	
11,100.00	90.00	0.52	7,543.00	2,838.88	-1,348.62	2,968.47	0.00	0.00	
11,200.00	90.00	0.52	7,543.00	2,938.88	-1,347.71	3,067.78	0.00	0.00	
11,300.00	90.00	0.52	7,543.00	3,038.87	-1,346.80	3,167.09	0.00	0.00	
11,400.00	90.00	0.52	7,543.00	3,138.87	-1,345.89	3,266.39	0.00	0.00	
11,500.00	90.00	0.52	7,543.00	3,238.87	-1,344.99	3,365.70	0.00	0.00	
11,600.00	90.00	0.52	7,543.00	3,338.86	-1,344.08	3,465.01	0.00	0.00	
11,700.00	90.00	0.52	7,543.00	3,438.86	-1,343.17	3,564.31	0.00	0.00	
11,800.00	90.00	0.52	7,543.00	3,538.85	-1,342.26	3,663.62	0.00	0.00	
11,900.00	90.00	0.52	7,543.00	3,638.85	-1,341.35	3,762.93	0.00	0.00	
12,000.00	90.00	0.52	7,543.00	3,738.85	-1,340.44	3,862.23	0.00	0.00	
12,100.00	90.00	0.52	7,543.00	3,838.84	-1,339.54	3,961.54	0.00	0.00	
12,200.00	90.00	0.52	7,543.00	3,938.84	-1,338.63	4,060.85	0.00	0.00	
12,300.00	90.00	0.52	7,543.00	4,038.83	-1,337.72	4,160.15	0.00	0.00	
12,400.00	90.00	0.52	7,543.00	4,138.83	-1,336.81	4,259.46	0.00	0.00	
12,500.00	90.00	0.52	7,543.00	4,238.82	-1,335.90	4,358.77	0.00	0.00	
12,600.00	90.00	0.52	7,543.00	4,338.82	-1,334.99	4,458.07	0.00	0.00	
12,700.00	90.00	0.52	7,543.00	4,438.82	-1,334.09	4,557.38	0.00	0.00	
12,800.00	90.00	0.52	7,543.00	4,538.81	-1,333.18	4,656.69	0.00	0.00	
12,900.00	90.00	0.52	7,543.00	4,638.81	-1,332.27	4,755.99	0.00	0.00	
13,000.00	90.00	0.52	7,543.00	4,738.80	-1,331.36	4,855.30	0.00	0.00	
13,100.00	90.00	0.52	7,543.00	4,838.80	-1,330.45	4,954.61	0.00	0.00	
13,200.00	90.00	0.52	7,543.00	4,938.80	-1,329.54	5,053.91	0.00	0.00	
13,300.00	90.00	0.52	7,543.00	5,038.79	-1,328.63	5,153.22	0.00	0.00	
13,400.00	90.00	0.52	7,543.00	5,138.79	-1,327.73	5,252.53	0.00	0.00	
13,500.00	90.00	0.52	7,543.00	5,238.78	-1,326.82	5,351.83	0.00	0.00	
13,600.00	90.00	0.52	7,543.00	5,338.78	-1,325.91	5,451.14	0.00	0.00	
13,700.00	90.00	0.52	7,543.00	5,438.78	-1,325.00	5,550.45	0.00	0.00	
13,800.00	90.00	0.52	7,543.00	5,538.77	-1,324.09	5,649.75	0.00	0.00	
13,900.00	90.00	0.52	7,543.00	5,638.77	-1,323.18	5,749.06	0.00	0.00	
14,000.00	90.00	0.52	7,543.00	5,738.76	-1,322.28	5,848.37	0.00	0.00	
14,100.00	90.00	0.52	7,543.00	5,838.76	-1,321.37	5,947.67	0.00	0.00	
14,200.00	90.00	0.52	7,543.00	5,938.75	-1,320.46	6,046.98	0.00	0.00	
14,300.00	90.00	0.52	7,543.00	6,038.75	-1,319.55	6,146.29	0.00	0.00	
14,400.00	90.00	0.52	7,543.00	6,138.75	-1,318.64	6,245.59	0.00	0.00	
14,500.00	90.00	0.52	7,543.00	6,238.74	-1,317.73	6,344.90	0.00	0.00	
14,600.00	90.00	0.52	7,543.00	6,338.74	-1,316.82	6,444.21	0.00	0.00	
14,700.00	90.00	0.52	7,543.00	6,438.73	-1,315.92	6,543.51	0.00	0.00	
14,800.00	90.00	0.52	7,543.00	6,538.73	-1,315.01	6,642.82	0.00	0.00	
14,900.00	90.00	0.52	7,543.00	6,638.73	-1,314.10	6,742.13	0.00	0.00	
15,000.00	90.00	0.52	7,543.00	6,738.72	-1,313.19	6,841.43	0.00	0.00	
15,100.00	90.00	0.52	7,543.00	6,838.72	-1,312.28	6,940.74	0.00	0.00	
15,200.00	90.00	0.52	7,543.00	6,938.71	-1,311.37	7,040.05	0.00	0.00	

# Cathedral Energy Services

## Planning Report

<b>Database:</b>	USA EDM 5000 Multi Users DB	<b>Local Co-ordinate Reference:</b>	Well DREAM WEAVER North 3B-21H-N268 - SI
<b>Company:</b>	Crestone Peak Resources	<b>TVD Reference:</b>	23' KB @ 4924.00usft (Original Well Elev)
<b>Project:</b>	DJ BASIN	<b>MD Reference:</b>	23' KB @ 4924.00usft (Original Well Elev)
<b>Site:</b>	S21-T2N-R68W	<b>North Reference:</b>	True
<b>Well:</b>	DREAM WEAVER North 3B-21H-N268	<b>Survey Calculation Method:</b>	Minimum Curvature
<b>Wellbore:</b>	OH		
<b>Design:</b>	PLAN #3		

Planned Survey									
Measured Depth (usft)	Inclination (°)	Azimuth (°)	Vertical Depth (usft)	+N/-S (usft)	+E/-W (usft)	Vertical Section (usft)	Dogleg Rate (°/100usft)	Build Rate (°/100u)	Comments / Formations
15,300.00	90.00	0.52	7,543.00	7,038.71	-1,310.47	7,139.35	0.00	0.00	
15,400.00	90.00	0.52	7,543.00	7,138.71	-1,309.56	7,238.66	0.00	0.00	
15,500.00	90.00	0.52	7,543.00	7,238.70	-1,308.65	7,337.97	0.00	0.00	
15,600.00	90.00	0.52	7,543.00	7,338.70	-1,307.74	7,437.27	0.00	0.00	
15,700.00	90.00	0.52	7,543.00	7,438.69	-1,306.83	7,536.58	0.00	0.00	
15,800.00	90.00	0.52	7,543.00	7,538.69	-1,305.92	7,635.89	0.00	0.00	
15,900.00	90.00	0.52	7,543.00	7,638.68	-1,305.02	7,735.19	0.00	0.00	
16,000.00	90.00	0.52	7,543.00	7,738.68	-1,304.11	7,834.50	0.00	0.00	
16,100.00	90.00	0.52	7,543.00	7,838.68	-1,303.20	7,933.81	0.00	0.00	
16,200.00	90.00	0.52	7,543.00	7,938.67	-1,302.29	8,033.11	0.00	0.00	
16,300.00	90.00	0.52	7,543.00	8,038.67	-1,301.38	8,132.42	0.00	0.00	
16,400.00	90.00	0.52	7,543.00	8,138.66	-1,300.47	8,231.73	0.00	0.00	
16,500.00	90.00	0.52	7,543.00	8,238.66	-1,299.56	8,331.03	0.00	0.00	
16,600.00	90.00	0.52	7,543.00	8,338.66	-1,298.66	8,430.34	0.00	0.00	
16,700.00	90.00	0.52	7,543.00	8,438.65	-1,297.75	8,529.65	0.00	0.00	
16,800.00	90.00	0.52	7,543.00	8,538.65	-1,296.84	8,628.95	0.00	0.00	
16,900.00	90.00	0.52	7,543.00	8,638.64	-1,295.93	8,728.26	0.00	0.00	
17,000.00	90.00	0.52	7,543.00	8,738.64	-1,295.02	8,827.57	0.00	0.00	
17,100.00	90.00	0.52	7,543.00	8,838.63	-1,294.11	8,926.87	0.00	0.00	
17,200.00	90.00	0.52	7,543.00	8,938.63	-1,293.21	9,026.18	0.00	0.00	
17,300.00	90.00	0.52	7,543.00	9,038.63	-1,292.30	9,125.49	0.00	0.00	
17,400.00	90.00	0.52	7,543.00	9,138.62	-1,291.39	9,224.79	0.00	0.00	
17,500.00	90.00	0.52	7,543.00	9,238.62	-1,290.48	9,324.10	0.00	0.00	
17,600.00	90.00	0.52	7,543.00	9,338.61	-1,289.57	9,423.41	0.00	0.00	
17,700.00	90.00	0.52	7,543.00	9,438.61	-1,288.66	9,522.71	0.00	0.00	
17,800.00	90.00	0.52	7,543.00	9,538.61	-1,287.75	9,622.02	0.00	0.00	
17,900.00	90.00	0.52	7,543.00	9,638.60	-1,286.85	9,721.33	0.00	0.00	
18,000.00	90.00	0.52	7,543.00	9,738.60	-1,285.94	9,820.63	0.00	0.00	
18,100.00	90.00	0.52	7,543.00	9,838.59	-1,285.03	9,919.94	0.00	0.00	
18,200.00	90.00	0.52	7,543.00	9,938.59	-1,284.12	10,019.25	0.00	0.00	
18,300.00	90.00	0.52	7,543.00	10,038.59	-1,283.21	10,118.56	0.00	0.00	
18,400.00	90.00	0.52	7,543.00	10,138.58	-1,282.30	10,217.86	0.00	0.00	
18,500.00	90.00	0.52	7,543.00	10,238.58	-1,281.40	10,317.17	0.00	0.00	
18,600.00	90.00	0.52	7,543.00	10,338.57	-1,280.49	10,416.48	0.00	0.00	
18,700.00	90.00	0.52	7,543.00	10,438.57	-1,279.58	10,515.78	0.00	0.00	
18,800.00	90.00	0.52	7,543.00	10,538.56	-1,278.67	10,615.09	0.00	0.00	
18,900.00	90.00	0.52	7,543.00	10,638.56	-1,277.76	10,714.40	0.00	0.00	
19,000.00	90.00	0.52	7,543.00	10,738.56	-1,276.85	10,813.70	0.00	0.00	
19,100.00	90.00	0.52	7,543.00	10,838.55	-1,275.95	10,913.01	0.00	0.00	
19,200.00	90.00	0.52	7,543.00	10,938.55	-1,275.04	11,012.32	0.00	0.00	
19,300.00	90.00	0.52	7,543.00	11,038.54	-1,274.13	11,111.62	0.00	0.00	
19,400.00	90.00	0.52	7,543.00	11,138.54	-1,273.22	11,210.93	0.00	0.00	
19,500.00	90.00	0.52	7,543.00	11,238.54	-1,272.31	11,310.24	0.00	0.00	
19,600.00	90.00	0.52	7,543.00	11,338.53	-1,271.40	11,409.54	0.00	0.00	
19,700.00	90.00	0.52	7,543.00	11,438.53	-1,270.49	11,508.85	0.00	0.00	
19,800.00	90.00	0.52	7,543.00	11,538.52	-1,269.59	11,608.16	0.00	0.00	
19,884.15	90.00	0.52	7,543.00	11,622.67	-1,268.82	11,691.72	0.00	0.00	DREAM WEAVER North 3B-21H-N268 BHL

# Cathedral Energy Services

## Planning Report

<b>Database:</b>	USA EDM 5000 Multi Users DB	<b>Local Co-ordinate Reference:</b>	Well DREAM WEAVER North 3B-21H-N268 - SI
<b>Company:</b>	Crestone Peak Resources	<b>TVD Reference:</b>	23' KB @ 4924.00usft (Original Well Elev)
<b>Project:</b>	DJ BASIN	<b>MD Reference:</b>	23' KB @ 4924.00usft (Original Well Elev)
<b>Site:</b>	S21-T2N-R68W	<b>North Reference:</b>	True
<b>Well:</b>	DREAM WEAVER North 3B-21H-N268	<b>Survey Calculation Method:</b>	Minimum Curvature
<b>Wellbore:</b>	OH		
<b>Design:</b>	PLAN #3		

Targets									
Target Name									
- hit/miss target	Dip Angle	Dip Dir.	TVD	+N/-S	+E/-W	Northing	Easting	Latitude	Longitude
- Shape	(°)	(°)	(usft)	(usft)	(usft)	(usft)	(usft)		
DREAM WEAVER North	0.00	0.00	7,543.00	-119.89	-1,375.50	1,286,822.61	3,135,284.82	40.119708	-105.016253
- plan hits target center									
- Point									
DREAM WEAVER North	0.00	0.00	7,543.00	11,622.67	-1,268.82	1,298,565.58	3,135,326.78	40.151943	-105.015874
- plan hits target center									
- Point									