



99999999

ARROYO 8-21
01707545 SENE SEC 21 T15E S1W

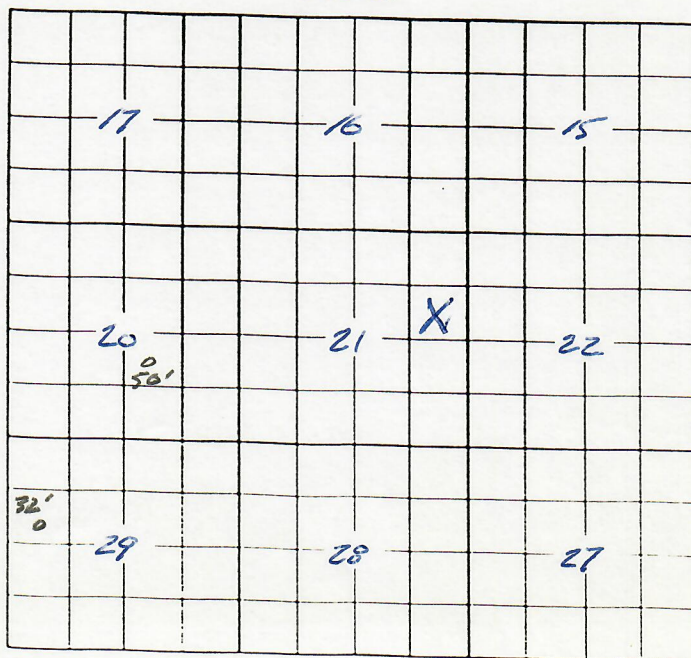
	QTR	QTR	SEC	TWNS	RANGE	PM	NAME	DEPTH	TPERF	BPERF
A	NW	SE	12	150S	0510W	S	KELLER BURR	30		
B	NW	NW	18	150S	0510W	S	J O D RANCH	30		
C	NE	NW	20	150S	0510W	S	ANSLEY DAVID			
D	NW	SE	20	150S	0510W	S	CAGE RANCH CO	40		
E	NW	SE	24	150S	0510W	S	CAGE CATTLE CO	38		
F	SW	NW	29	150S	0510W	S	RUSH CREEK RANCH	32		
G	NW	NW	32	150S	0510W	S	ANSLEY DAVID	42		
H	NW	SW	08	160S	0510W	S	ANSLEY DAVID	22		
I	SE	SW	10	160S	0510W	S	MORGAN RICHARD	30		
J	SE	SW	10	160S	0510W	S	MORGAN RICHARD	30	15	30
K	SW	NW	14	160S	0510W	S	BRIEGAL BROS	52		
L	NW	SW	14	160S	0510W	S	BRIEGEL EMMETT	36		
M	NE	NW	16	160S	0510W	S	CAGE CLAUDE R	50		
N	NE	NW	18	160S	0510W	S	ANSLEY DAVID	40		
O	NE	NW	18	160S	0510W	S	ANSLEY DAVID	55		
P	SW	NE	20	160S	0510W	S	ANSLEY DAVID			
Q	SE	SW	30	160S	0510W	S	ANSLEY DAVID			
R	SE	SW	30	160S	0510W	S	ANSLEY DAVID	101		
S	SE	SW	30	160S	0510W	S	ANSLEY DAVID	100		
T	NW	NW	04	170S	0510W	S	MORGAN R.			

Letter=Choice | F10=Mark 1 | PgUp/PgDn=±20 | UpAr/DnAr =±1 | Esc=Quit

OIL AND GAS WELL/WATER WELL

0 = WATER WELL

BASE PLAT



00517747



ATLAS
WIRELINE
SERVICES

CONFIDENTIAL
DRILL INDUCTION FOCUSED LOG

GAMMA RAY

FILE NO.

7172

WELL NO.

CS-217-7303

COMPANY MULL DRILLING CO., INC.

WELL CSU HINPOOL NO. 1

FIELD WILD CAT

COUNTY CUYAHUE

STATE COLORADO

LOCATION:

NAME

SEC22 TWP15S RGE31M

OTHER SERVICES
BHC-RC/CR
ZOL/CN/CR

PENETRANT DRILLING GROUND LEVEL

LOGGING MEASURED FROM K.B. 12 ELEV. 4550' FT. ABOVE P.O.

DRILLING MEASURED FROM KELLY BUSHING

ELEVATIONS

KB 4562'
DE 4560'
CL 4550'

DATE 7-JUN-92

RUN 1

SERVICE ORDER

DEPTH-DRILLER

DEPTH-LOGGER

POSITION LOGGED INTERVAL

TOP LOGGED INTERVAL

CASING - DRILLER

CASING - LOGGER

BIT SIZE

TYPE FLUID IN HOLE

DENSITY / VISCOSITY

PH / FLUID LOSS

SOURCE OF SAMPLE

RT RT MEAS. TEMP.

RT RT MEAS. TEMP.

RT RT MEAS. TEMP.

SOURCE OF RT / RMC

RT RT MEAS. TEMP.

TIME SINCE CIRCULATION

TRK. REC. TEMP. DEG. F

EQUIP. NO. / LOC.

RECORDED BY

WITNESSED BY

FINAL PRINT

RECEIVED

JUN 20 1992

FOLD HERE

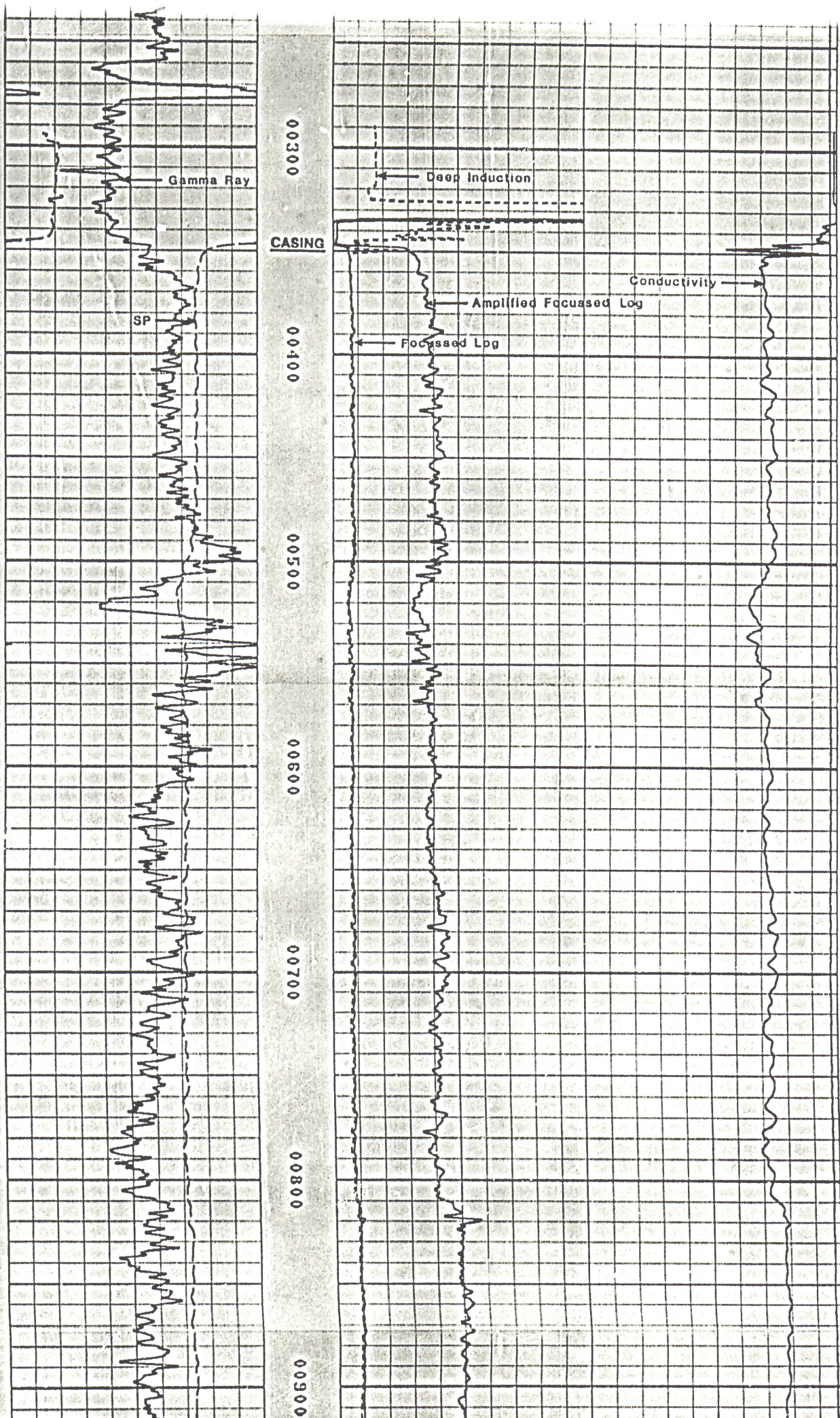
IN MAKING INTERPRETATIONS OF LOGS OUR EMPLOYEES WILL GIVE CUSTOMER THE BENEFIT OF THEIR BEST JUDGEMENT, BUT SINCE ALL INTERPRETATIONS ARE OPINIONS BASED ON INFERENCES FROM ELECTRICAL OR OTHER MEASUREMENTS, WE CANNOT, AND WE DO NOT GUARANTEE THE ACCURACY OR CORRECTNESS OF ANY INTERPRETATION. WE SHALL NOT BE LIABLE OR RESPONSIBLE FOR ANY LOSS, COST, DAMAGES, OR EXPENSES, WHATSOEVER INCURRED OR SUSTAINED BY THE CUSTOMER RESULTING FROM ANY INTERPRETATION MADE BY ANY OF OUR EMPLOYEES.

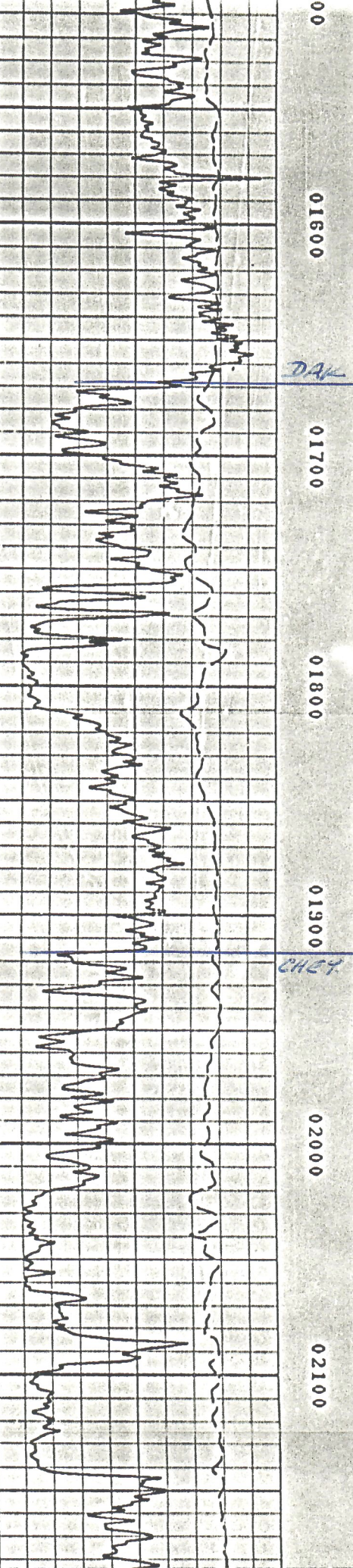
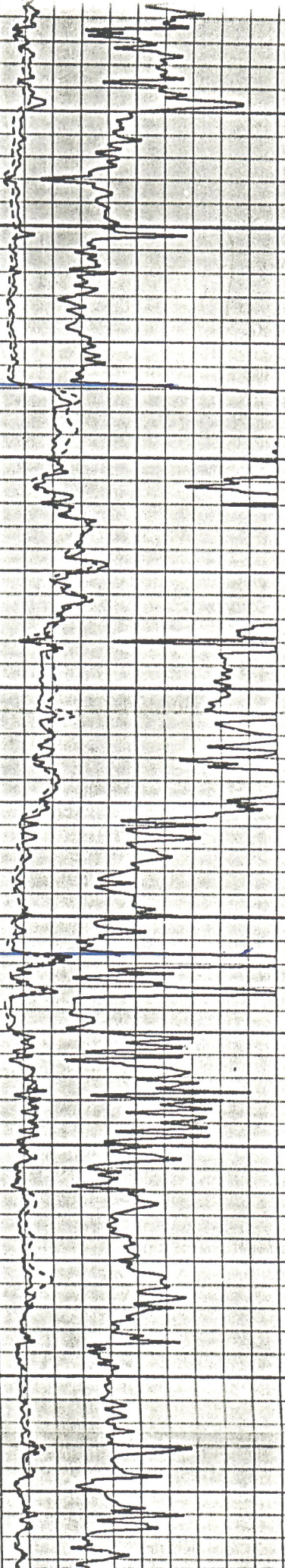
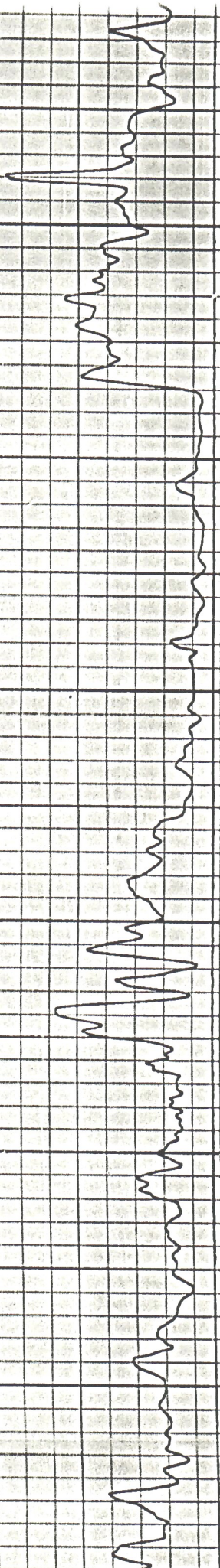
REMARKS RUN (1)

RIG: KUDU NO.1
CREW: MCKIE & ELMORE

EQUIPMENT DATA

RUN	TRIP	TOOL	SERIAL NO.	SERIES NO.	POSITION
-----	------	------	------------	------------	----------





00 01600 01700 01800 01900 02000 02100

DAK

CH24

DATA FROM GEOPHYSICAL LOGS
DAKOTA/CHEYENNE AQUIFERS
EASTERN COLORADO
1994

TWN/RNG SEC QTR/QTR WELL ID	ELEV. GS	ELEV MP	DEPTH TO TOP DAKOTA	DEPTH BASE TO TOP DAKOTA	DEPTH TO TOP CHEY	DEPTH BASE TO TOP CHEY	ELEV TOP DAKOTA	ELEV BASE DAKOTA	ELEV TOP CHEY	ELEV BASE CHEY
15S 45W 1 SWSE No. 1 YELTSIN	4304	4312	1765	1980	2095	2250	2547	2332	2217	2062
15S 45W 14 SWSW ARDREY 1	4354	4363	1720	1910	2010	2140	2643	2453	2353	2223
15S 45W 20 NENE SAMPSON 1	4386	4398	1695	1920	1995	2060	2703	2478	2403	2338
15S 45W 26 SWNW DOLFI-JONES 1	4352	4361	1645	1875	1975	2080	2716	2486	2386	2281
15S 45W 33 NWNW CHAMPLIN SS & N. FARMS INC. #1	4289	4299	1495	1630	1745	1870	2804	2669	2554	2429
15S 46W 6 SENW STEVENS 1-6	4359	4370	1620	1845	1940	2060	2750	2525	2430	2310
15S 46W 10 NW BAIN 1	4525	4534	1860	2015	2130	2165	2674	2519	2404	2369
15S 46W 17 SENW 2X ROTHER 22-17	4330	4340	1550	1750	1870	2025	2790	2590	2470	2315
15S 46W 23 SESW LARSON No. 1 RDD	4474	4484	1700	1930	2025	2135	2784	2554	2459	2349
15S 47W 1 SENE #1 IRENE 42-1	4359	4369	1625	1855	1940	2075	2744	2514	2429	2294
15S 47W 6 SESE SSM No 1-6 TXD DRAN	4204	4213	1415	1610	1760	1935	2798	2603	2453	2278
15S 48W 5 SENE SSM-UPRR 1-5	4294	4305	1520	1735	1875	2020	2785	2570	2430	2285
15S 48W 14 NWSW JELINEK 14-13	4233	4245	1385	1595	1745	1950	2860	2650	2500	2295 DIFFICULT Kc
15S 48W 34 SWSE M. SELL 1	4235	4244	1275	1540	1675	1840	2969	2704	2569	2404
15S 49W 1 NWSW #1 WECO COLLINS RANCH 13-1	4338	4348	1550	1745	1880	2065	2798	2603	2468	2283 DIFFICULT Kc
15S 49W 12 NENW COLLINS RANCH A-1	4293	4303	1465	1665	1780	1990	2838	2638	2523	2313
15S 49W 26 SESE COGC No. 1 LIESEN	4344	4352	1405	1620	1775	1920	2947	2732	2577	2432
15S 49W 30 SENW SSM KELLER 1-30	4454	4465	1520	1715	1725	2025	2945	2750	2740	2440
15S 50W 1 NWNW STEWART A-1	4392	4402	1580	1785	1965	2120	2822	2617	2437	2282
15S 50W 4 NENE #1 CSU MINPOOL A	4504	4516	1750	1955	2075	2255	2766	2561	2441	2261
15S 50W 36 NWNW #1 STATE-KELLER	4407	4419	1460	1645	1720	1920	2959	2774	2699	2499
15S 51W 24 NESW No. 1 CAGE RANCH	4489	4501	1560	1760	1850	1980	2941	2741	2651	2521
15S 52W 8 NENE HOC 1-8	4760	4770	2125	2320	2485	2630	2645	2450	2285	2140 DIFFICULT LOG