

Inspection Photos

09/05/2018

Operator: FOUNDATION ENERGY
MANAGEMENT LLC - 10112

Location ID: 327361

Inspection Doc. Number: 682503860
Weld County, CO

Aaron Trujillo
NE Reclamation Specialist
COGCC

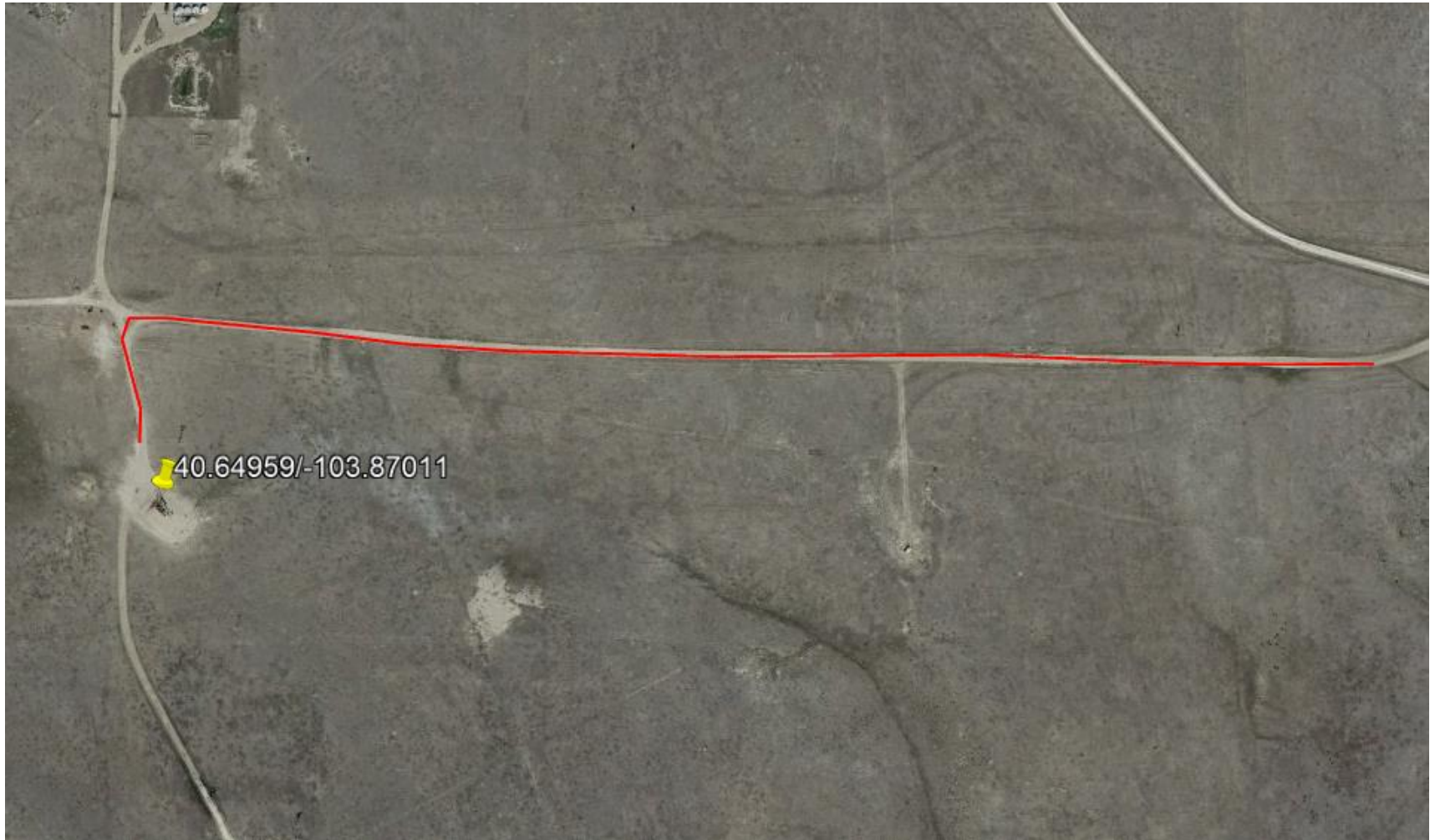


Photo 1: 2013 Aerial imagery. The following photos document Diffuse knapweed on the access road(s). For the purpose of this inspection report, this aerial image highlights the areas of the access road where weeds were observed.



Photo 2: Photo taken from the access road. Photo shows Diffuse Knapweed has not been sufficiently managed or removed from access road.



Photo 3: Photo taken from the access road. Photo shows Diffuse Knapweed has not been sufficiently managed or removed from access road.



Photo 4: Photo taken from the access road. Photo shows Diffuse Knapweed has not been sufficiently managed or removed from access road.

Inspection Photos
Operator: FOUNDATION ENERGY MANAGEMENT LLC - 10112
Location ID: 327361



Photo 5: Photo taken from the access road, facing west. Photo shows Diffuse Knapweed has not been sufficiently managed or removed from access road.



Photo 6: Photo taken from the access road facing east. Photo shows Diffuse Knapweed has not been sufficiently managed or removed from access road.



Photo 7: Photo taken from the access road facing west. Photo shows Diffuse Knapweed has not been sufficiently managed or removed from access road.



Photo 8: Photo taken from the north end of the location, facing southeast. Photo shows Diffuse Knapweed has not been sufficiently managed or removed from location.



Photo 9: Photo taken from the north end of the location, facing southeast. Photo shows Diffuse Knapweed has not been sufficiently managed or removed from location.



Photo 10: Photo taken from the south end of the location, facing southwest. Photo shows Diffuse Knapweed has not been sufficiently managed or removed from location.



Photo 11: Photo taken from the southeast end of the location, facing southwest. Photo shows Diffuse Knapweed has not been sufficiently managed or removed from location.

Inspection Photos
Operator: FOUNDATION ENERGY MANAGEMENT LLC - 10112
Location ID: 327361



Photo 12: Photo taken from the south end of the location, facing northeast. Photo shows Diffuse Knapweed has not been sufficiently managed or removed from location.



Photo 13: Photo taken from the west end of the location, facing northeast. Photo shows Diffuse Knapweed has not been sufficiently managed or removed from location.



Photo 14: Photo taken from the north end of the location. Photo shows Diffuse Knapweed has not been sufficiently managed or removed from access road.