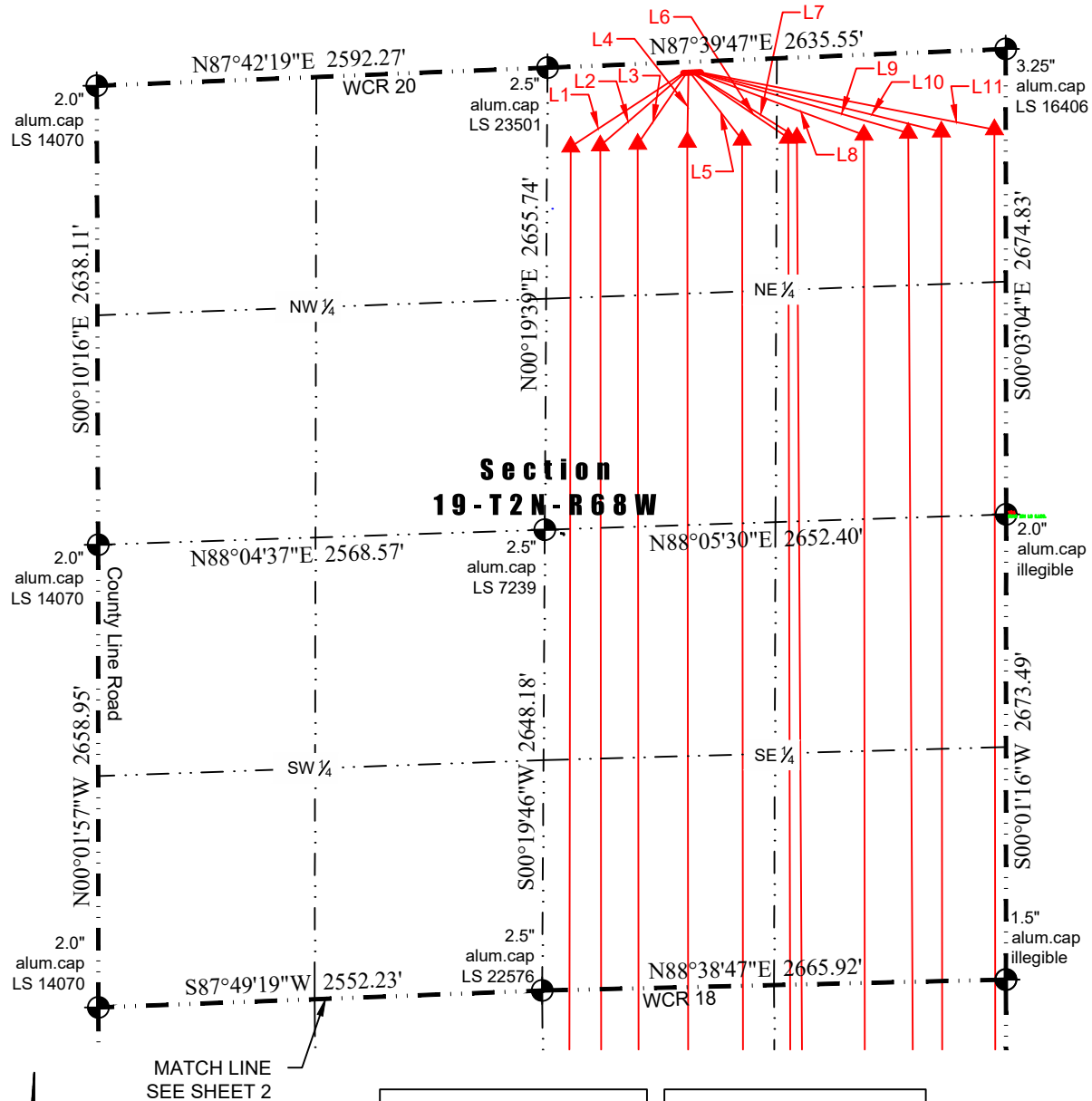




Washburn Land Surveying  
www.WashburnSurveying.com  
970-232-9645

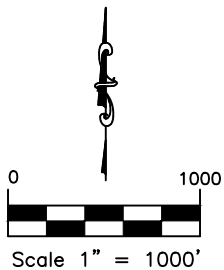
# MULTI-WELL PLAN REGNIER FARMS 19H-B268 PAD

SECTION: 19  
TOWNSHIP: 2N  
RANGE: 68W  
6TH P.M.  
WELD COUNTY, CO



Parcel Line Table		
Line #	Length	Direction
L1	774'	S56°43'19"W
L2	642'	S49°20'48"W
L3	497'	S34°31'07"W
L4	398'	S00°57'58"W
L5	488'	S37°41'42"E
L6	669'	S55°49'40"E
L7	701'	S57°46'22"E
L8	1033'	S69°40'17"E

Parcel Line Table		
Line #	Length	Direction
L9	1262'	S73°57'46"E
L10	1435'	S76°13'50"E
L11	1720'	S78°57'32"E



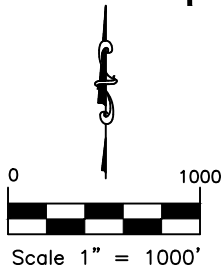
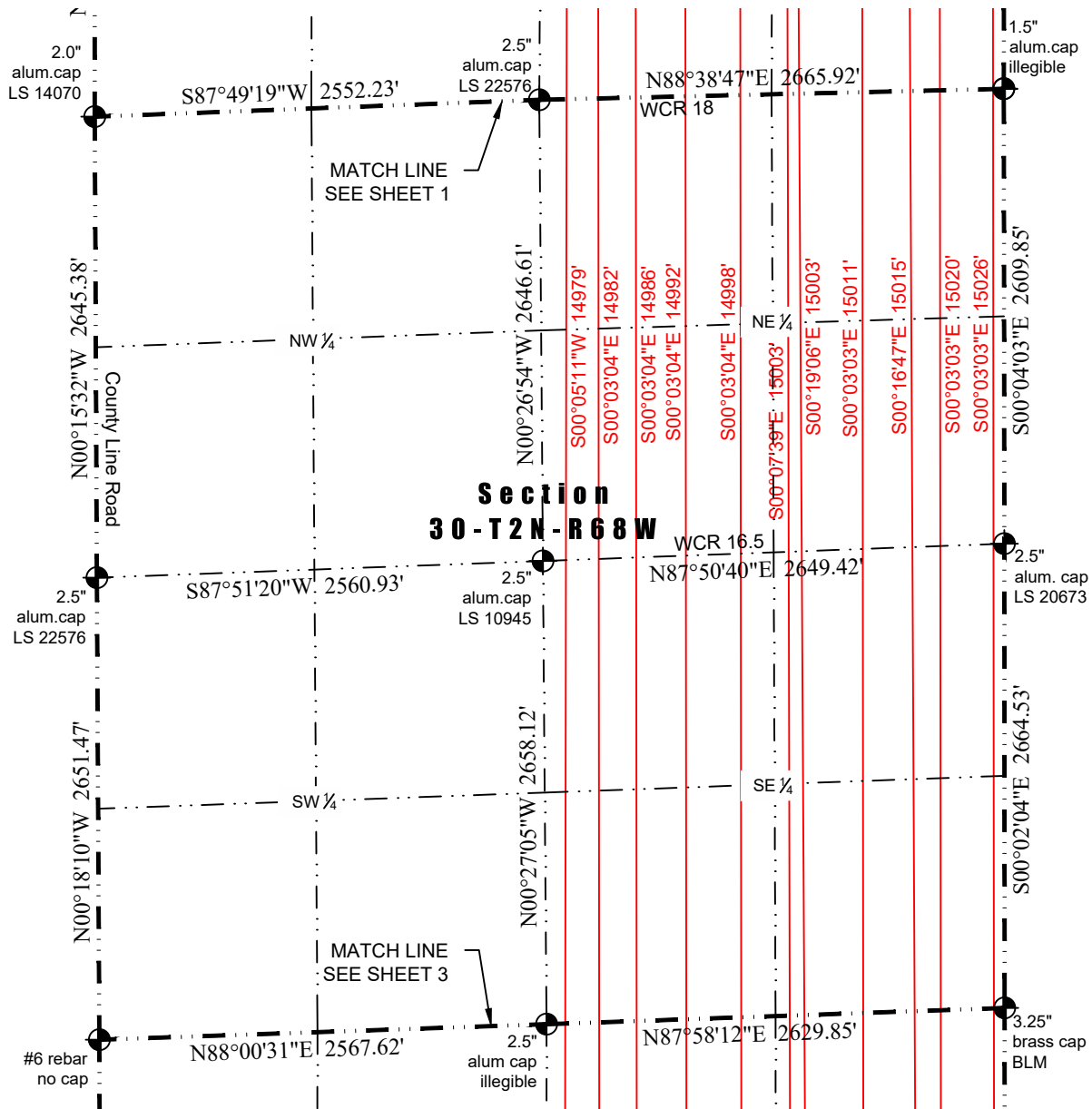
- LEGEND:
- ALIQUOT CORNER AS DESCRIBED
  - CALCULATED POSITION
  - SURFACE HOLE LOCATION (SHL)
  - LANDING POINT LOCATION (LPL)
  - BOTTOM HOLE LOCATION (BHL)



Washburn Land Surveying  
www.WashburnSurveying.com  
970-232-9645

# MULTI-WELL PLAN REGNIER FARMS 19H-B268 PAD

SECTION: 19  
TOWNSHIP: 2N  
RANGE: 68W  
6TH P.M.  
WELD COUNTY, CO



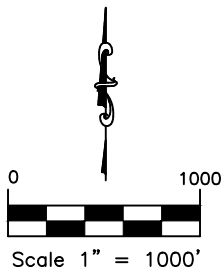
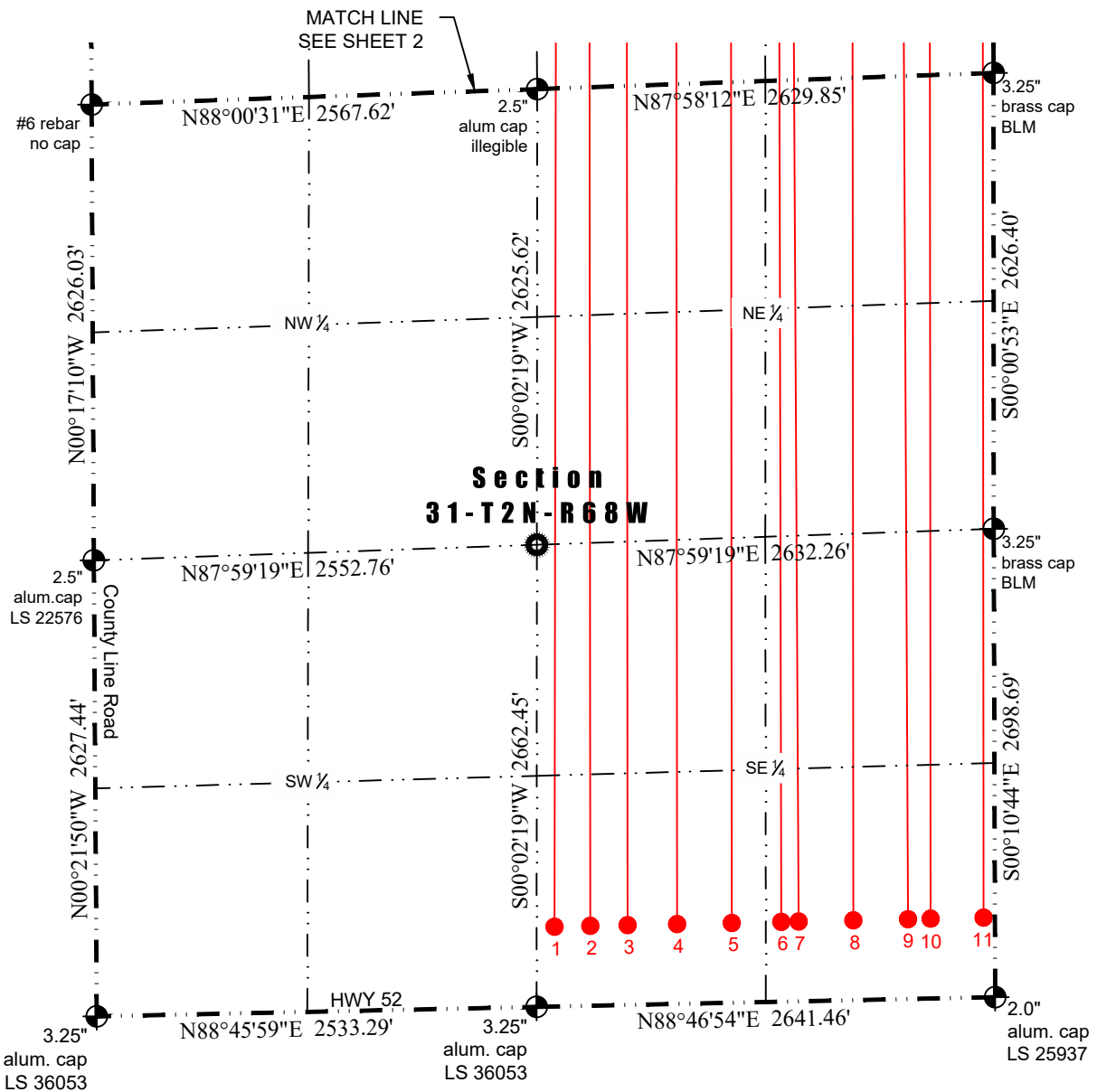
- LEGEND:
- ALIQUOT CORNER AS DESCRIBED
  - CALCULATED POSITION
  - SURFACE HOLE LOCATION (SHL)
  - ▲ LANDING POINT LOCATION (LPL)
  - BOTTOM HOLE LOCATION (BHL)



Washburn Land Surveying  
www.WashburnSurveying.com  
970-232-9645

# MULTI-WELL PLAN REGNIER FARMS 19H-B268 PAD

SECTION: 19  
TOWNSHIP: 2N  
RANGE: 68W  
6TH P.M.  
WELD COUNTY, CO



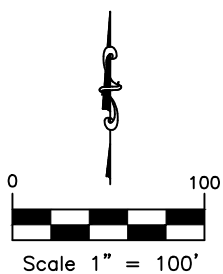
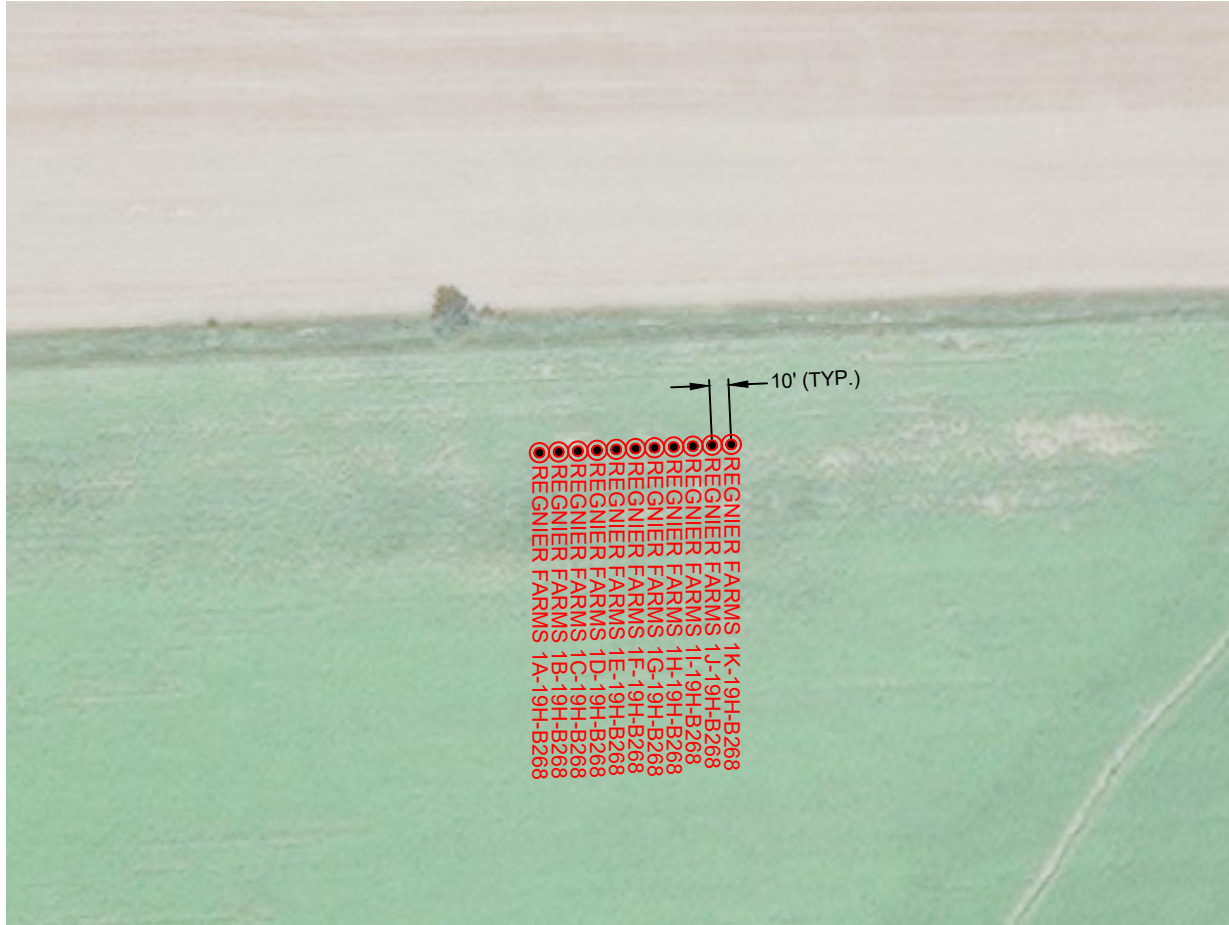
- LEGEND:**
- ALIQUOT CORNER AS DESCRIBED
  - CALCULATED POSITION
  - SURFACE HOLE LOCATION (SHL)
  - LANDING POINT LOCATION (LPL)
  - BOTTOM HOLE LOCATION (BHL)



Washburn Land Surveying  
www.WashburnSurveying.com  
970-232-9645

# MULTI-WELL PLAN REGNIER FARMS 19H-B268 PAD

SECTION: 19  
TOWNSHIP: 2N  
RANGE: 68W  
6TH P.M.  
WELD COUNTY, CO





Washburn Land Surveying  
www.WashburnSurveying.com  
970-232-9645

## MULTI-WELL PLAN REGNIER FARMS 19H-B268 PAD

SECTION: 19  
TOWNSHIP: 2N  
RANGE: 68W  
6TH P.M.  
WELD COUNTY, CO

ID	WELL	SHL LAT	SHL LONG	FOOTAGES
1	REGNIER FARMS 1A-19H-B268	40.131197	-105.043308	62' FNL, 1853' FEL OF SECTION 19
2	REGNIER FARMS 1B-19H-B268	40.131199	-105.043272	62' FNL, 1843' FEL OF SECTION 19
3	REGNIER FARMS 1C-19H-B268	40.131200	-105.043237	62' FNL, 1833' FEL OF SECTION 19
4	REGNIER FARMS 1D-19H-B268	40.131201	-105.043201	62' FNL, 1823' FEL OF SECTION 19
5	REGNIER FARMS 1E-19H-B268	40.131202	-105.043165	62' FNL, 1813' FEL OF SECTION 19
6	REGNIER FARMS 1F-19H-B268	40.131203	-105.043129	62' FNL, 1803' FEL OF SECTION 19
7	REGNIER FARMS 1G-19H-B268	40.131204	-105.043094	62' FNL, 1793' FEL OF SECTION 19
8	REGNIER FARMS 1H-19H-B268	40.131205	-105.043058	62' FNL, 1783' FEL OF SECTION 19
9	REGNIER FARMS 1I-19H-B268	40.131206	-105.043022	62' FNL, 1773' FEL OF SECTION 19
10	REGNIER FARMS 1J-19H-B268	40.131207	-105.042986	62' FNL, 1763' FEL OF SECTION 19
11	REGNIER FARMS 1K-19H-B268	40.131208	-105.042951	62' FNL, 1753' FEL OF SECTION 19
ID	WELL	TPZ LAT	TPZ LONG	FOOTAGES
1	REGNIER FARMS 1A-19H-B268	40.130041	-105.045629	460' FNL, 2500' FEL OF SECTION 19
2	REGNIER FARMS 1B-19H-B268	40.130058	-105.045021	460' FNL, 2330' FEL OF SECTION 19
3	REGNIER FARMS 1C-19H-B268	40.130079	-105.044252	460' FNL, 2115' FEL OF SECTION 19
4	REGNIER FARMS 1D-19H-B268	40.130107	-105.043232	460' FNL, 1830' FEL OF SECTION 19
5	REGNIER FARMS 1E-19H-B268	40.130138	-105.042105	460' FNL, 1515' FEL OF SECTION 19
6	REGNIER FARMS 1F-19H-B268	40.130164	-105.041158	460' FNL, 1250' FEL OF SECTION 19
7	REGNIER FARMS 1G-19H-B268	40.130169	-105.040979	460' FNL, 1200' FEL OF SECTION 19
8	REGNIER FARMS 1H-19H-B268	40.130206	-105.039602	460' FNL, 815' FEL OF SECTION 19
9	REGNIER FARMS 1I-19H-B268	40.130231	-105.038690	460' FNL, 560' FEL OF SECTION 19
10	REGNIER FARMS 1J-19H-B268	40.130250	-105.038010	460' FNL, 370' FEL OF SECTION 19
11	REGNIER FARMS 1K-19H-B268	40.130280	-105.036919	460' FNL, 65' FEL OF SECTION 19
ID	WELL	BHL LAT	BHL LONG	FOOTAGES
1	REGNIER FARMS 1A-19H-B268	40.088922	-105.045984	460' FSL, 2536' FEL OF SECTION 31
2	REGNIER FARMS 1B-19H-B268	40.088931	-105.045248	460' FSL, 2330' FEL OF SECTION 31
3	REGNIER FARMS 1C-19H-B268	40.088941	-105.044479	460' FSL, 2115' FEL OF SECTION 31
4	REGNIER FARMS 1D-19H-B268	40.088953	-105.043460	460' FSL, 1830' FEL OF SECTION 31
5	REGNIER FARMS 1E-19H-B268	40.088967	-105.042335	460' FSL, 1515' FEL OF SECTION 31
6	REGNIER FARMS 1F-19H-B268	40.088980	-105.041316	460' FSL, 1230' FEL OF SECTION 31
7	REGNIER FARMS 1G-19H-B268	40.088984	-105.040958	460' FSL, 1130' FEL OF SECTION 31
8	REGNIER FARMS 1H-19H-B268	40.088998	-105.039833	460' FSL, 815' FEL OF SECTION 31
9	REGNIER FARMS 1I-19H-B268	40.089012	-105.038707	460' FSL, 500' FEL OF SECTION 31
10	REGNIER FARMS 1J-19H-B268	40.089018	-105.038242	460' FSL, 370' FEL OF SECTION 31
11	REGNIER FARMS 1K-19H-B268	40.089031	-105.037152	460' FSL, 65' FEL OF SECTION 31