

# Foundation Energy Management, LLC

## WELLBORE DIAGRAM

Well / Battery	Prospect Name		Total Depth	Current Status
CSF 13C-14-4-104	BAXTER PASS		2120	TA
Location	Sec-Twn-Rng		Producing Horizon	County & State
NWNW	14-4S-104W		MESAVERDE	RIO BLANCO, CO

### WELLBORE DIAGRAM

**Prepared Date:** 7/25/2018  
**Prepared By:** JARED KIMBRELL

#### General Info

API #: 05-103-10486  
 KB Elevation: 6183'  
 GL Elevation: 6174'  
 Spud Date: 10/11/2004  
 Completion Date: 6/27/2006  
 TVD: 2120'  
 MD: 2120'  
 Last PBTD: 1670' (06/19/2013)

#### Tubing Detail

2-7/8 inch(OD)  
 6.5 # (weight)  
 J-55 grade

#### Tubing Tally

	Length	Depth
2-7/8	6	6

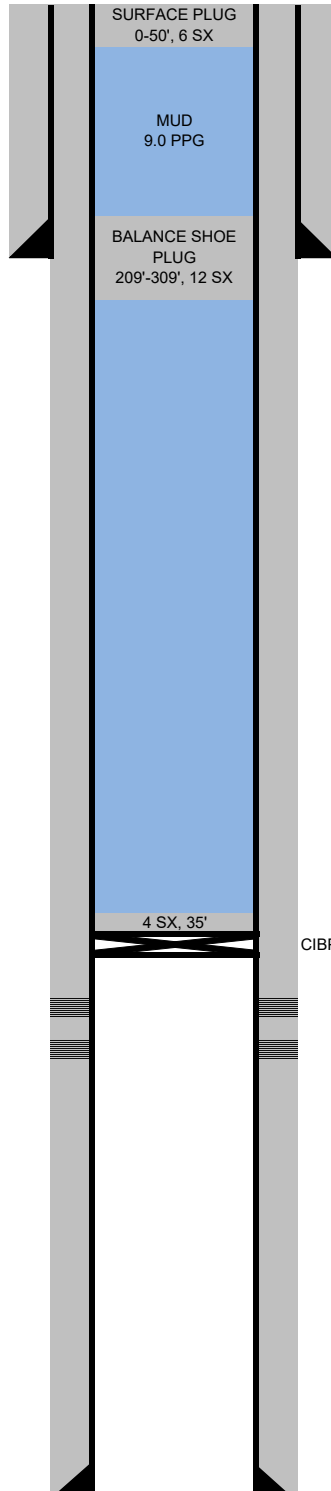
Pump Details:

Pumping Unit Details:

Well Notes:

CMT GOES TO 2115' CSG GOES TO 2033'

No collar on bottom of short jt in hole



#### Surface Casing

8-5/8 inch (OD)  
 24 # (weight)  
 J-55 grade  
 259 depth from KB  
 SURF cement top Calculated  
 185 sacks of cement  
 12-1/4 inch (OD) HOLE SIZE

#### Rod Design

length	depth
	0
	0
	0
	0

#### Production Casing

5-1/2 inch (OD)  
 17 # (weight)  
 J-55 grade  
 2033 depth from KB  
 0 cement top Calculated  
 200 sacks of cement  
 7-7/8 inch (OD) HOLE SIZE

CIBP @ 1650'

#### Open Perforations

1692'-1702'  
 1727'-1752'  
 Mesaverde

PBTD: 1670' (tagged on 06/19/2013)