

T6N, R80W, 6th P.M.

# SandRidge Exploration & Production, LLC.

Surface & Landing Point Locations,  
SU 0680 12-9H16 as  
shown in the NE1/4NW1/4 & NW1/4NE1/4  
respectively of Section 9, T6N,  
R80W, 6th P.M., Jackson County, Colorado.

## BASIS OF BEARINGS:

US STATE PLANE 1983  
CO NORTH 0501 GRID

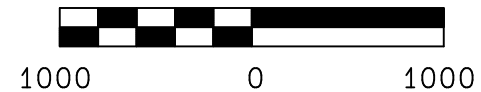
## BASIS OF ELEVATION

SPOT ELEVATION AT THE NW CORNER OF SECTION 9,  
T6N, R80W, 6TH PM, TAKEN FROM THE COALMONT  
QUADRANGLE, USGS 7.5 MIN QUAD (TOPOGRAPHIC MAP)  
WITH SAID ELEVATION MARKED AS BEING 8222 FEET.

## SURFACE USE

GRAZING/RANGELAND

GRAPHIC SCALE 1"=1000'



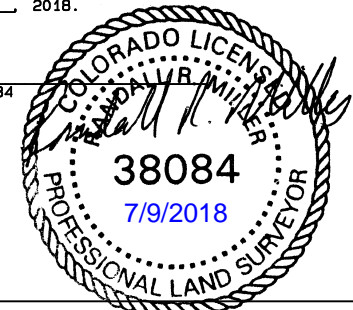
I RANDALL R. MILLER, BEING A REGISTERED LAND SURVEYOR IN THE  
STATE OF COLORADO, DO HEREBY CERTIFY THAT THIS PLAT WAS  
MADE BY ME AND/OR UNDER MY DIRECT SUPERVISION AND THAT IT  
IS ACCURATE TO THE BEST OF MY KNOWLEDGE.

DATED THIS \_\_\_\_\_ DAY OF \_\_\_\_\_, 2018.

RANDALL R. MILLER, COLORADO PLS NO. 38084

## LEGEND

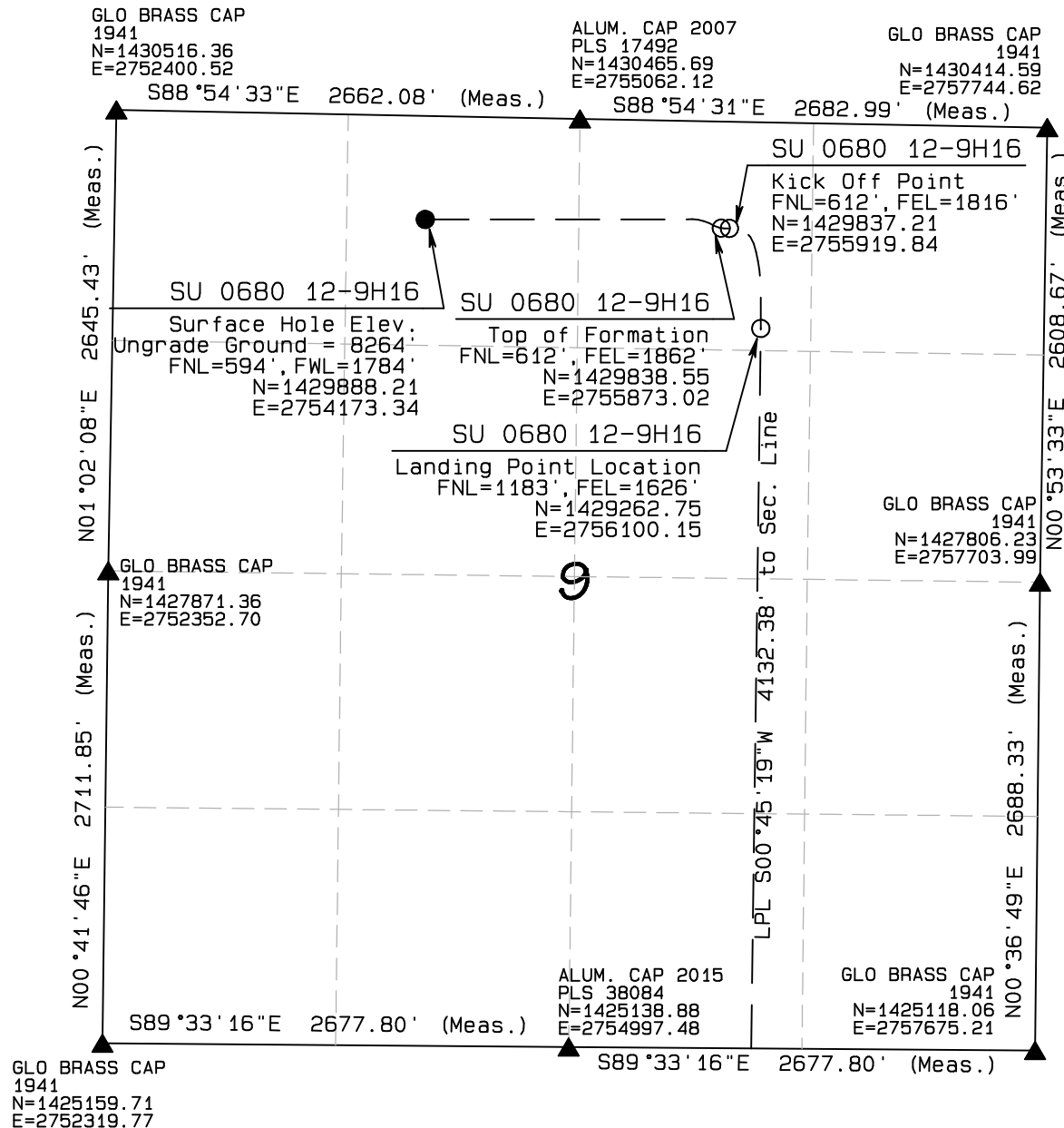
90° SYMBOL  
FOUND CORNER  
PROPOSED WELL  
PROPOSED KOP/LPL/BHL



NORTH PARK ENGINEERING &  
CONSULTING, INC.

P.O. BOX 395  
WALDEN, CO 80480  
(970) 723-3725

DATE OF FIELD WORK: 6/1/2018 DRAWING COMPLETION: 7/6/2018  
SURVEYED BY: LRK DRAWN BY: ADL CHECKED BY: RRM



NAD 83 (KOP-KICK OFF PT)

LATITUDE=40.50999°N  
LONGITUDE=106.37782°W

NAD 83 (TOF OF NIOBRARA)

LATITUDE=40.50999°N  
LONGITUDE=106.37798°W

NAD 83 (SURFACE LOCATION)

LATITUDE=40.51008°N  
LONGITUDE=106.38410°W PDOP=1.200

NAD 83 (TARGET BOTTOM HOLE)

LATITUDE=40.48243°N  
LONGITUDE=106.37726°W

NAD 83 (LANDING POINT LOCATION)

LATITUDE=40.50842°N  
LONGITUDE=106.37715°W

T6N, R80W, 6th P.M.

SandRidge Exploration & Production, LLC.

Bottom Hole Location,  
SU 0680 12-9H16 as  
shown in the SW1/4SE1/4 of Section 16, T6N,  
R80W, 6th P.M., Jackson County, Colorado.

BASIS OF BEARINGS:

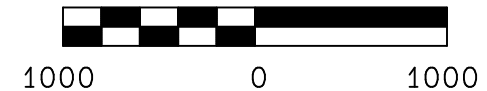
US STATE PLANE 1983  
CO NORTH 0501 GRID

BASIS OF ELEVATION

SPOT ELEVATION AT THE NW CORNER OF SECTION 9,  
T6N, R80W, 6TH PM, TAKEN FROM THE COALMONT  
QUADRANGLE, USGS 7.5 MIN QUAD (TOPOGRAPHIC MAP)  
WITH SAID ELEVATION MARKED AS BEING 8222 FEET.

SURFACE USE  
GRAZING/RANGELAND

GRAPHIC SCALE 1"=1000'



I RANDALL R. MILLER, BEING A REGISTERED LAND SURVEYOR IN THE  
STATE OF COLORADO, DO HEREBY CERTIFY THAT THIS PLAT WAS  
MADE BY ME AND/OR UNDER MY DIRECT SUPERVISION AND THAT IT  
IS ACCURATE TO THE BEST OF MY KNOWLEDGE.

DATED THIS \_\_\_\_\_ DAY OF \_\_\_\_\_, 2018

RANDALL R. MILLER, COLORADO PLS NO. 38084

LEGEND

90° SYMBOL  
FOUND CORNER  
PROPOSED WELL  
PROPOSED KOP/LPL/BHL



NORTH PARK ENGINEERING &  
CONSULTING, INC.

P.O. BOX 395  
WALDEN, CO 80480  
(970) 723-3725

DATE OF FIELD WORK: 6/1/2018 DRAWING COMPLETION: 7/6/2018

SURVEYED BY: LRK DRAWN BY: ADL CHECKED BY: RRM

NAD 83 (KOP-KICK OFF PT)

LATITUDE=40.50999°N  
LONGITUDE=106.37782°W

NAD 83 (TOF OF NIOBRARA)

LATITUDE=40.50999°N  
LONGITUDE=106.37798°W

NAD 83 (SURFACE LOCATION)

LATITUDE=40.51008°N  
LONGITUDE=106.38410°W PDOP=1.200

NAD 83 (TARGET BOTTOM HOLE)

LATITUDE=40.48243°N  
LONGITUDE=106.37726°W

NAD 83 (LANDING POINT LOCATION)

LATITUDE=40.50842°N  
LONGITUDE=106.37715°W