

## Inspection Photos

Location Name: Pond G Centralized E&P Waste Management Facility

Facility ID: #437578 Pit ID: #414402

Inspection Date: August 29, 2018



Photo #1 – Pit facility sign located on north side of pit.



Photo #2 – View of pit from NE corner. Note foreign debris (angular rocks) on top of pit liner.



## Inspection Photos

Location Name: Pond G Centralized E&P Waste Management Facility

Facility ID: #437578 Pit ID: #414402

Inspection Date: August 29, 2018



**Photo #3 – Hoses stored on east side of pit, looking south.**



**Photo #4 – Additional equipment storage east of pit.**

## Inspection Photos

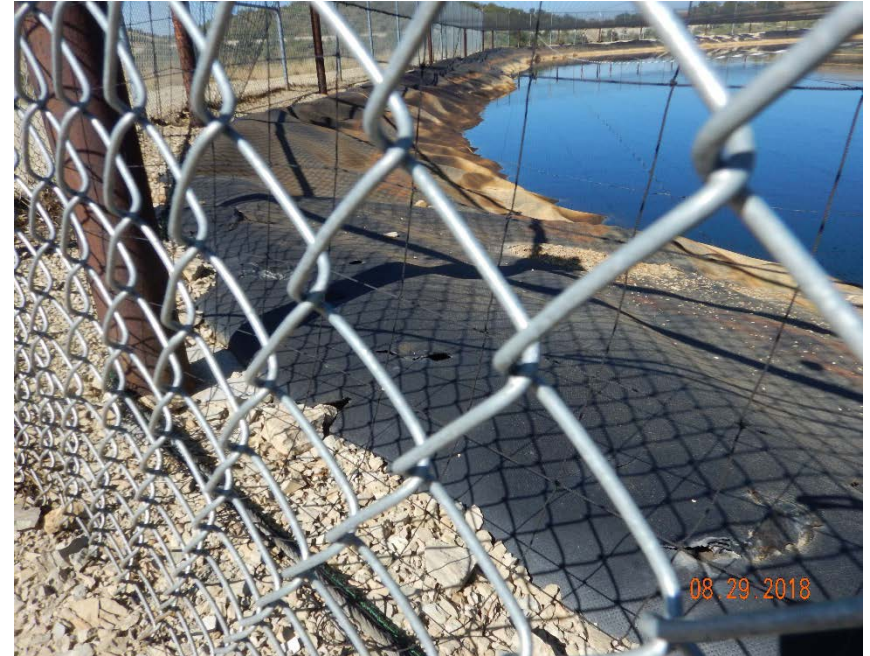
Location Name: Pond G Centralized E&P Waste Management Facility

Facility ID: #437578 Pit ID: #414402

Inspection Date: August 29, 2018



**Photo #5 – Holes observed in east pit berm liner (near anchor trench).**



**Photo #6 – Holes observed in SE corner of pit liner. Note absence of freeboard monitoring method around perimeter of pit.**



## Inspection Photos

Location Name: Pond G Centralized E&P Waste Management Facility

Facility ID: #437578 Pit ID: #414402

Inspection Date: August 29, 2018



**Photo #7 – Metal pipe observed inside of netting on south side of pit.**



**Photo #8 – Hole in liner observed on west pit berm.**

## Inspection Photos

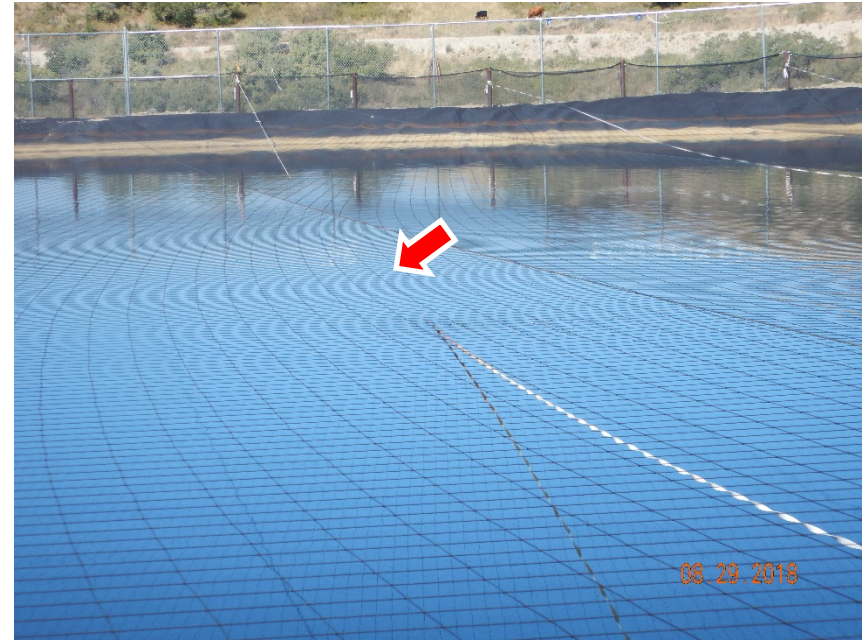
Location Name: Pond G Centralized E&P Waste Management Facility

Facility ID: #437578 Pit ID: #414402

Inspection Date: August 29, 2018



**Photo #9 – Hoses with camlocks in direct contact with pit liner at NW corner of pit.**



**Photo #10 – White, ratcheted straps have enough slack to dip into pit fluids (red arrow), view from east side of pit.**



## Inspection Photos

Location Name: Pond G Centralized E&P Waste Management Facility

Facility ID: #437578 Pit ID: #414402

Inspection Date: August 29, 2018



**Photo #11 – Leak detection system on north side of pit.**



**Photo #12 – Pipeline manifold and unused HDPE surface pipe spool observed at NW corner of pit.**



## Inspection Photos

Location Name: Pond G Centralized E&P Waste Management Facility

Facility ID: #437578 Pit ID: #414402

Inspection Date: August 29, 2018



**Photo #13 – Capped and plugged off-location surface pipelines leading into location from NW corner, looking west. Note black HDPE surface pipeline in bottom left corner of photo is disconnected.**



**Photo #14 – Steel off-location surface pipelines lead from NW corner of pit toward production facility SE of location (next photo). HDPE surface line was disconnected on date of inspection.**

## Inspection Photos

Location Name: Pond G Centralized E&P Waste Management Facility

Facility ID: #437578 Pit ID: #414402

Inspection Date: August 29, 2018



**Photo #15 – Looking SE along steel off-location surface pipelines from previous photo.**



**Photo #16 – Array of steel ASTs used as gun barrel separators, located at NE corner of pit.**



## Inspection Photos

Location Name: Pond G Centralized E&P Waste Management Facility

Facility ID: #437578 Pit ID: #414402

Inspection Date: August 29, 2018



**Photo #17 – Unused equipment (hose with camlock, metal bucket, and cardboard box) inside of NW corner of tank battery. Per operator, Rubbermaid tub contains filter socks to be used inside of battery.**



**Photo #18 – Steel pipe stored on top of liner on south side of tank berm.**

## Inspection Photos

Location Name: Pond G Centralized E&P Waste Management Facility

Facility ID: #437578 Pit ID: #414402

Inspection Date: August 29, 2018



**Photo #19 – View of gun barrel tank battery from SE corner. Note only two condensate tanks on east end of battery have labels and placards.**



**Photo #20 – Unused equipment stored northeast of pit.**