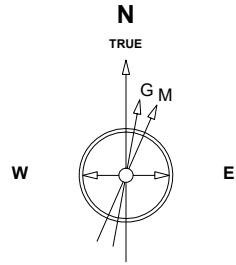


# Great Western Operating Company, LLC

**Location** Colorado  
**Field** Wattenburg  
**Installation** Schaefer-Pre

**Slot** C13 - Schaefer LD 13-032HC  
**Well** Schaefer LD 13-032HC  
**Wellbore** Schaefer LD 13-032HC (PWB)

Created by admin  
Date plotted 13-Aug-2018  
Plot reference is Schaefer LD 13-032HC (PWB).  
Ref wellpath is Schaefer LD 13-032HC (PWP#1).  
Coordinates are in Feet reference C13 - Schaefer LD 13-032HC.  
True Vertical Depths are reference Rig Datum.  
Measured Depths are reference Rig Datum.  
Rig Datum: Planned Datum #1  
Rig Datum to Mean Sea Level: 5041.40 ft.  
Plot North is aligned to TRUE North.



Scale 1 cm = 500 ft

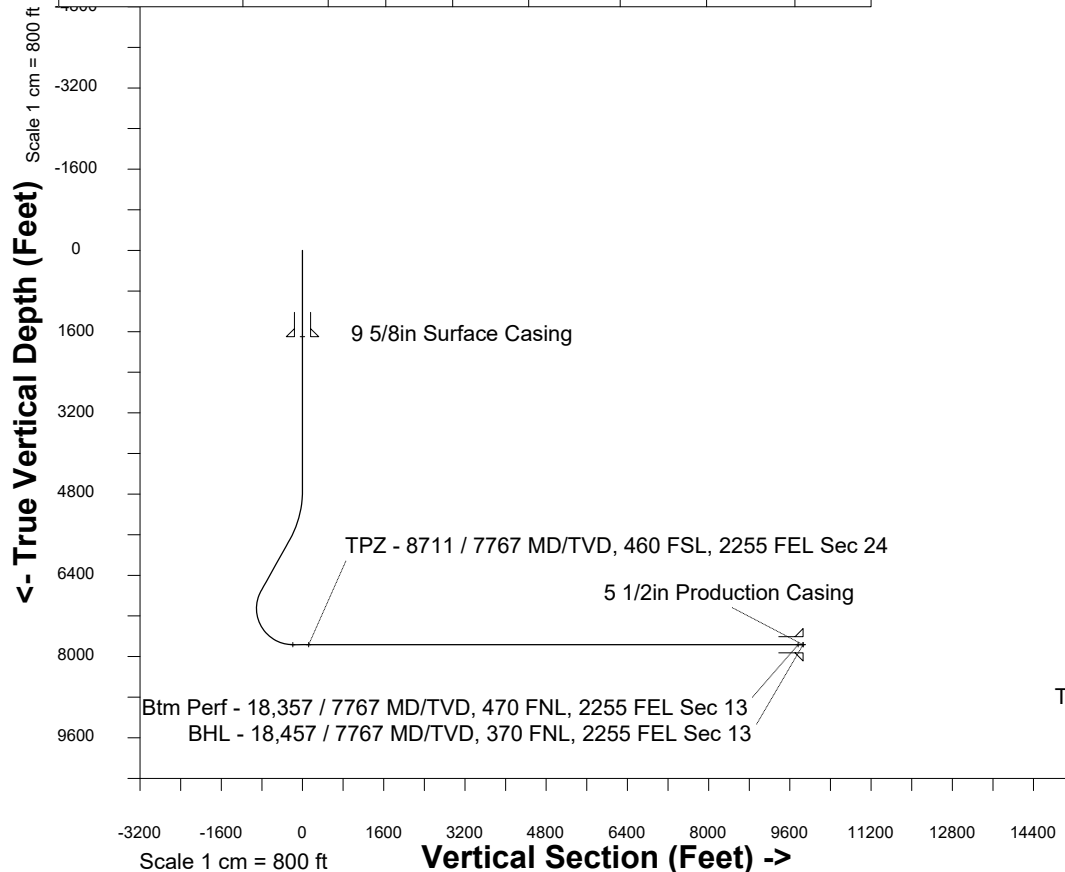
East (Feet) ->

-11000 -10000 -9000 -8000 -7000 -6000 -5000 -4000 -3000 -2000 -1000 0 1000 2000

Aug-2-2018  
EMM-2015 [2000.0-2020.0] Dip: 66.28 deg Field: 51960.7 nT  
Lat: N39 56 40.1460 Long: W104 50 5.2404 Elev: 5021.40 ft  
Magnetic North is 8.18 deg East of TRUE North  
To correct azimuth from Magnetic to TRUE add 8.18 deg

## WELL PROFILE DATA

Point	MD	Inc	Azi	TVD	North	East	deg/100ft	V. Sect
Tie on	0.00	0.00	0.00	0.00	S 0.00	W 0.00		0.00
KOP	4738.00	0.00	192.26	4738.00	S 0.00	W 0.00	0.00	0.00
End of Build	5737.85	30.00	192.26	5692.80	S 249.96	W 54.33	3.00	-248.30
End of Hold	6910.65	30.00	192.26	6708.52	S 822.91	W 178.85	0.00	-817.42
Target	8711.44	90.00	0.13	7767.00	N 112.25	W 305.22	0.00	120.98
Target Btm Pe...Sec 13	18356.56	90.00	0.13	7767.00	N 9757.34	W 283.92	0.00	9761.47
End of Turn	18356.82	90.00	0.16	7767.00	N 9757.61	W 283.92	13.00	9761.74
T.D. & Target BHL... 13	18456.74	90.00	0.16	7767.00	N 9857.52	W 283.64	0.00	9861.60



BHL - 18,457 / 7767 MD/TVD, 370 FNL, 2255 FEL Sec 13  
Btm Perf - 18,357 / 7767 MD/TVD, 470 FNL, 2255 FEL Sec 13

