

# SRC ENERGY

Location: COLORADO Slot: SLOT#33 CHALK 20C-35-M (2330'FNL & 2131'FEL, SEC.26)  
Field: WELD COUNTY (NAD83, TRUE NORTH) Well: CHALK 20C-35-M  
Facility: SEC.26-T06N-R66W Wellbore: CHALK 20C-35-M PWB

Plot reference wellpath is CHALK 20C-35-M (REV-B.0) PWP	Grid System: NAD83 / Lambert Colorado SP, Northern Zone (501), US feet
True vertical depths are referenced to PROPETRO 12 (4) (RKB)	* = Wellpath was transformed from a different geodetic datum
Measured depths are referenced to PROPETRO 12 (4) (RKB)	North Reference: True north
PROPETRO 12 (4) (RKB) to Mean Sea Level: 4700 feet	Scale: True distance
Mean Sea Level to Mud line (At Slot: SLOT#33 CHALK 20C-35-M (2330'FNL & 2131'FEL, SEC.26)): 0 feet	Depths are in feet
Coordinates are in feet referenced to Slot	Created by: doddanna on 2018-08-08
	Database: WellArchitectDB2

## Location Information

Facility Name	Grid East (US ft)	Grid North (US ft)	Latitude	Longitude
SEC.26-T06N-R66W	3211308.441	1412009.151	40°27'42.779"N	104°44'26.117"W
Slot	Local N (ft)	Local E (ft)	Grid East (US ft)	Grid North (US ft)
SLOT#33 CHALK 20C-35-M (2330'FNL & 2131'FEL, SEC.26)	-617.91	-532.89	3210780.879	1411366.749
PROPETRO 12 (4) (RKB) to Mud line (At Slot: SLOT#33 CHALK 20C-35-M (2330'FNL & 2131'FEL, SEC.26))			4700R	
Mean Sea Level to Mud line (At Slot: SLOT#33 CHALK 20C-35-M (2330'FNL & 2131'FEL, SEC.26))			0R	
PROPETRO 12 (4) (RKB) to Mean Sea Level			4700R	

## Survey Program

Start MD (ft)	End MD (ft)	Tool	Model	Log Name/Comment	Wellbore
4.00	1750.00	BHI NavTrak	BHI NavTrak (Rotating+Axial Corr)		CHALK 20C-35-M PWB
1750.00	13727.00	BHI AutoTrak Curve	BHI AutoTrak Curve (MagCAD+HFR1, Short spacing)		CHALK 20C-35-M PWB

## Well Profile Data

Design Comment	MD (ft)	Inc (°)	Az (°)	TVD (ft)	Local N (ft)	Local E (ft)	DLS (°/100ft)	VS (ft)
Tie On	4.00	0.000	98.580	4.00	0.00	0.00	0.00	0.00
End of Tangent	300.00	0.000	98.580	300.00	0.00	0.00	0.00	0.00
End of Build (XS)	699.29	7.986	98.580	698.00	-4.14	27.47	2.00	7.60
End of Tangent (XS)	6591.45	7.986	98.580	6533.02	-126.26	836.89	0.00	231.69
End of 3D Arc (XS)	7577.99	89.934	180.306	7151.00	-762.48	919.18	9.00	873.20
End of Tangent (XS)	13627.17	89.934	180.306	7158.00	-6811.56	886.84	0.00	6869.04
End of 3D Arc	13630.59	90.001	180.318	7158.00	-6814.98	886.82	2.00	6872.43
End of Tangent	13727.00	90.001	180.318	7158.00	-6911.39	886.29	0.00	6967.98

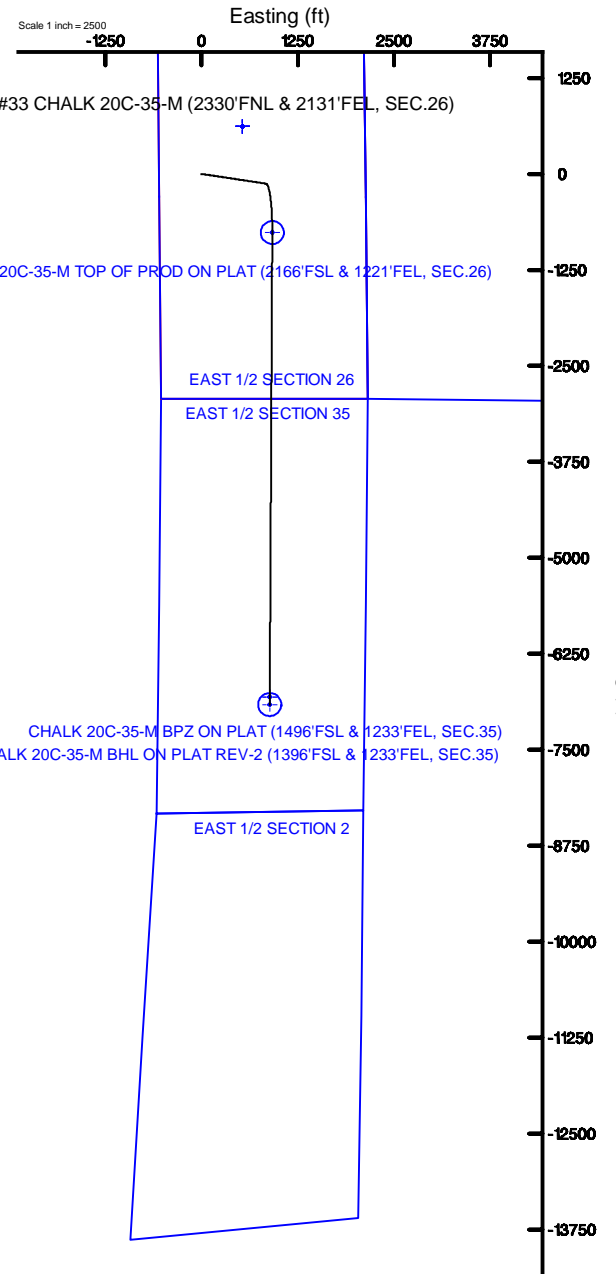
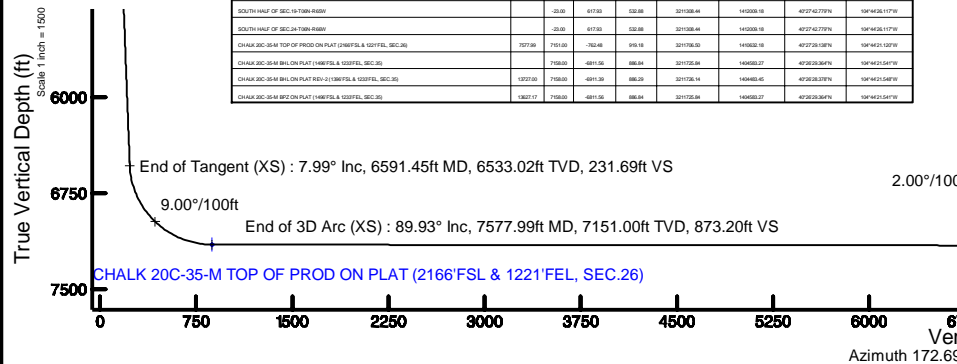
## Hole and Casing Sections

Name	Start MD (ft)	End MD (ft)	Interval (ft)	Start TVD (ft)	End TVD (ft)	Start Local N (ft)	Start Local E (ft)	End Local N (ft)	End Local E (ft)	Wellbore
13.5in Open Hole	4.00	1750.00	1746.00	4.00	1738.52	0.00	0.00	-25.92	171.81	CHALK 20C-35-M PWB
9.625in Casing Surface	4.00	1750.00	1746.00	4.00	1738.52	0.00	0.00	-25.92	171.81	CHALK 20C-35-M PWB
8.5in Open Hole	1750.00	13727.00	11977.00	1738.52	7158.00	-25.92	171.81	-6911.39	886.29	CHALK 20C-35-M PWB

## Targets

# Targets

Name	MD (ft)	TVD (ft)	Local N (ft)	Local E (ft)	Grid East (US ft)	Grid North (US ft)	Latitude	Longitude
EAST HALF OF SEC.26-T06N-R66W	-53.00	617.91	532.89	3211308.44	1412009.15	40°27'42.779"N	104°44'26.117"W	
EAST HALF OF SEC.26-T06N-R66W	-53.00	617.91	532.89	3211308.44	1412009.15	40°27'42.779"N	104°44'26.117"W	
EAST HALF OF SEC.26-T06N-R66W	-53.00	617.91	532.89	3211308.44	1412009.15	40°27'42.779"N	104°44'26.117"W	
EAST HALF OF SEC.26-T06N-R66W	-53.00	617.91	532.89	3211308.44	1412009.15	40°27'42.779"N	104°44'26.117"W	
SEC.26-T06N-R66W	-53.00	617.91	532.89	3211308.44	1412009.15	40°27'42.779"N	104°44'26.117"W	
SEC.26-T06N-R66W	-53.00	617.91	532.89	3211308.44	1412009.15	40°27'42.779"N	104°44'26.117"W	
SOUTH HALF OF SEC.19-T06N-R66W	-53.00	617.91	532.89	3211308.44	1412009.15	40°27'42.779"N	104°44'26.117"W	
SOUTH HALF OF SEC.24-T06N-R66W	-53.00	617.91	532.89	3211308.44	1412009.15	40°27'42.779"N	104°44'26.117"W	
CHALK SEC.35-M TOP OF PROD ON PLAT (2166'FSL & 1221'FEL, SEC.26)	7071.90	7158.00	-762.48	919.18	3211308.44	1412009.15	40°27'42.779"N	104°44'26.117"W
CHALK SEC.35-M BHL ON PLAT (1496'FSL & 1233'FEL, SEC.35)	7158.00	7158.00	-6811.56	886.84	3211308.44	1412009.15	40°27'42.779"N	104°44'26.117"W
CHALK SEC.35-M BHL ON PLAT REV-2 (1396'FSL & 1233'FEL, SEC.35)	13727.00	7158.00	-6811.56	886.84	3211308.44	1412009.15	40°27'42.779"N	104°44'26.117"W
CHALK SEC.35-M BPZ ON PLAT (1496'FSL & 1233'FEL, SEC.35)	13630.59	7158.00	-6811.56	886.84	3211308.44	1412009.15	40°27'42.779"N	104°44'26.117"W



BIGCM (1900.0 to 2019.0) Dip: 66.86° Field: 52318.8 nT  
Magnetic North is 8.28 degrees East of True North (at 8/7/2018)

To correct azimuth from Magnetic to True add 8.28 degrees

# CHALK\_20C-35-M\_\_REV-B.0\_\_PWP.las

## ~VERSION INFORMATION

VERS. 2.0 : CWLS LOG ASCII STANDARD-VERSION 2.0

WRAP. NO : ASCII DATA SECTION CONTAINS ONE ROW PER WELLPATH STATION

## ~WELL INFORMATION

#MNEM	.UNITS	DATA	:DESCRIPTION
#----	.-----	----	:-----
STRT	.ft	0.00	:START MD
STOP	.ft	13727.00	:STOP MD
STEP	.ft	0.0	:STEP (non-uniform increment)
NULL	.	-999.99	:NULL
COMP	.	SRC ENERGY	:OPERATOR
WELL	.	CHALK 20C-35-M	:WELL
FLD	.	WELD COUNTY (NAD83,TRUE NORTH)	:FIELD
LOC	.	COLORADO	:AREA (aka: Location)
CNTY	.	N/A	:COUNTY
STAT	.	N/A	:STATE
CTRY	.	N/A	:COUNTRY
SRVC	.	Baker Hughes	:CONTRACTOR
DATE	.	04/25/2018	:LOG REV DATE
API	.		:API NUMBER

## ~OTHER INFORMATION

#Software: WellArchitect(R) Version 5.0

#MNEM	.UNITS	DATA	:DESCRIPTION
#----	.-----	----	:-----
WPTYPE	.	PLANNED WELLPATH	:WELLPATH TYPE
FACILITY	.	SEC.26-T06N-R66W	:FACILITY
SLOT	.	SLOT#33 CHALK 20C-35-M (2330'FNL & 2131'FEL, SEC.26)	:SLOT
WELLBORE	.	CHALK 20C-35-M PWB	:WELLBORE
WELLPATH	.	CHALK 20C-35-M (REV-B.0) PWP	:WELLPATH
MDREFPT	.	PROPETRO 12 (4') (RKB)	:MD REFERENCE POINT
TVDREFPT	.	PROPETRO 12 (4') (RKB)	:TVD REFERENCE POINT
LCLREFPT	.	Slot	:LOCAL COORDINATE REFERENCE PT

## CHALK\_20C-35-M\_\_REV-B.0\_\_PWP.las

VSAZIMUTH.deg	172.69	:VERTICAL SECTION AZIMUTH
VSORIGN .ft	0.00	:VERTICAL SECTION ORIGIN NORTH
VSORIGE .ft	0.00	:VERTICAL SECTION ORIGIN EAST

## ~CURVE (WELLPATH) INFORMATION

#MNEM	.UNITS	:DESCRIPTION
#----	.-----	:-----
DEPT	.ft	:MEASURED DEPTH
INC	.deg	:INCLINATION
AZI	.deg	:AZIMUTH
TVD	.ft	:TRUE VERTICAL DEPTH
SECT	.ft	:CROSS SECTION (CURTAIN/VERTICAL)
LOCALN	.ft	:LOCAL NORTH
LOCALE	.ft	:LOCAL EAST
LAT	.deg	:LATITUDE
LONG	.deg	:LONGITUDE
DLS	.deg/100ft	:DOGLEG SEVERITY

## ~ASCII DATA

0.00	0.00	98.58	0.00	0.00	0.00	0.00	40.4601869	-104.7425031	0.00
4.00	0.00	98.58	4.00	0.00	0.00	0.00	40.4601869	-104.7425031	0.00
104.00	0.00	98.58	104.00	0.00	0.00	0.00	40.4601869	-104.7425031	0.00
204.00	0.00	98.58	204.00	0.00	0.00	0.00	40.4601869	-104.7425031	0.00
300.00	0.00	98.58	300.00	0.00	0.00	0.00	40.4601869	-104.7425031	0.00
304.00	0.08	98.58	304.00	0.00	0.00	0.00	40.4601869	-104.7425030	2.00
404.00	2.08	98.58	403.98	0.52	-0.28	1.87	40.4601862	-104.7424963	2.00
504.00	4.08	98.58	503.83	1.99	-1.08	7.18	40.4601840	-104.7424773	2.00
604.00	6.08	98.58	603.43	4.41	-2.40	15.93	40.4601803	-104.7424458	2.00
699.29	7.99	98.58	698.00	7.60	-4.14	27.47	40.4601756	-104.7424043	2.00
704.00	7.99	98.58	702.66	7.78	-4.24	28.12	40.4601753	-104.7424020	0.00
804.00	7.99	98.58	801.69	11.59	-6.31	41.85	40.4601696	-104.7423526	0.00
904.00	7.99	98.58	900.72	15.39	-8.39	55.59	40.4601639	-104.7423033	0.00
1004.00	7.99	98.58	999.75	19.19	-10.46	69.33	40.4601582	-104.7422539	0.00
1104.00	7.99	98.58	1098.78	23.00	-12.53	83.07	40.4601525	-104.7422046	0.00

## CHALK\_20C-35-M\_\_REV-B.0\_\_PWP.las

1204.00	7.99	98.58	1197.81	26.80	-14.60	96.80	40.4601469	-104.7421552	0.00
1304.00	7.99	98.58	1296.84	30.60	-16.68	110.54	40.4601412	-104.7421058	0.00
1404.00	7.99	98.58	1395.87	34.41	-18.75	124.28	40.4601355	-104.7420565	0.00
1504.00	7.99	98.58	1494.90	38.21	-20.82	138.02	40.4601298	-104.7420071	0.00
1604.00	7.99	98.58	1593.94	42.01	-22.90	151.75	40.4601241	-104.7419577	0.00
1704.00	7.99	98.58	1692.97	45.81	-24.97	165.49	40.4601184	-104.7419084	0.00
1804.00	7.99	98.58	1792.00	49.62	-27.04	179.23	40.4601127	-104.7418590	0.00
1904.00	7.99	98.58	1891.03	53.42	-29.11	192.96	40.4601070	-104.7418096	0.00
2004.00	7.99	98.58	1990.06	57.22	-31.19	206.70	40.4601013	-104.7417603	0.00
2104.00	7.99	98.58	2089.09	61.03	-33.26	220.44	40.4600957	-104.7417109	0.00
2204.00	7.99	98.58	2188.12	64.83	-35.33	234.18	40.4600900	-104.7416615	0.00
2304.00	7.99	98.58	2287.15	68.63	-37.40	247.91	40.4600843	-104.7416122	0.00
2404.00	7.99	98.58	2386.18	72.44	-39.48	261.65	40.4600786	-104.7415628	0.00
2504.00	7.99	98.58	2485.21	76.24	-41.55	275.39	40.4600729	-104.7415134	0.00
2604.00	7.99	98.58	2584.24	80.04	-43.62	289.12	40.4600672	-104.7414641	0.00
2704.00	7.99	98.58	2683.27	83.84	-45.69	302.86	40.4600615	-104.7414147	0.00
2804.00	7.99	98.58	2782.30	87.65	-47.77	316.60	40.4600558	-104.7413653	0.00
2904.00	7.99	98.58	2881.33	91.45	-49.84	330.34	40.4600501	-104.7413160	0.00
3004.00	7.99	98.58	2980.36	95.25	-51.91	344.07	40.4600444	-104.7412666	0.00
3104.00	7.99	98.58	3079.39	99.06	-53.98	357.81	40.4600388	-104.7412172	0.00
3204.00	7.99	98.58	3178.42	102.86	-56.06	371.55	40.4600331	-104.7411679	0.00
3304.00	7.99	98.58	3277.45	106.66	-58.13	385.29	40.4600274	-104.7411185	0.00
3404.00	7.99	98.58	3376.48	110.47	-60.20	399.02	40.4600217	-104.7410691	0.00
3504.00	7.99	98.58	3475.51	114.27	-62.27	412.76	40.4600160	-104.7410198	0.00
3604.00	7.99	98.58	3574.54	118.07	-64.35	426.50	40.4600103	-104.7409704	0.00
3704.00	7.99	98.58	3673.57	121.88	-66.42	440.23	40.4600046	-104.7409210	0.00
3804.00	7.99	98.58	3772.60	125.68	-68.49	453.97	40.4599989	-104.7408717	0.00
3904.00	7.99	98.58	3871.63	129.48	-70.56	467.71	40.4599932	-104.7408223	0.00
4004.00	7.99	98.58	3970.66	133.28	-72.64	481.45	40.4599876	-104.7407729	0.00
4104.00	7.99	98.58	4069.69	137.09	-74.71	495.18	40.4599819	-104.7407236	0.00
4204.00	7.99	98.58	4168.72	140.89	-76.78	508.92	40.4599762	-104.7406742	0.00
4304.00	7.99	98.58	4267.75	144.69	-78.85	522.66	40.4599705	-104.7406248	0.00
4404.00	7.99	98.58	4366.78	148.50	-80.93	536.39	40.4599648	-104.7405755	0.00
4504.00	7.99	98.58	4465.81	152.30	-83.00	550.13	40.4599591	-104.7405261	0.00

## CHALK\_20C-35-M\_REV-B.0\_PWP.las

4604.00	7.99	98.58	4564.84	156.10	-85.07	563.87	40.4599534	-104.7404768	0.00
4704.00	7.99	98.58	4663.87	159.91	-87.14	577.61	40.4599477	-104.7404274	0.00
4804.00	7.99	98.58	4762.90	163.71	-89.22	591.34	40.4599420	-104.7403780	0.00
4904.00	7.99	98.58	4861.93	167.51	-91.29	605.08	40.4599363	-104.7403287	0.00
5004.00	7.99	98.58	4960.96	171.31	-93.36	618.82	40.4599307	-104.7402793	0.00
5104.00	7.99	98.58	5059.99	175.12	-95.44	632.56	40.4599250	-104.7402299	0.00
5204.00	7.99	98.58	5159.02	178.92	-97.51	646.29	40.4599193	-104.7401806	0.00
5304.00	7.99	98.58	5258.05	182.72	-99.58	660.03	40.4599136	-104.7401312	0.00
5404.00	7.99	98.58	5357.09	186.53	-101.65	673.77	40.4599079	-104.7400818	0.00
5504.00	7.99	98.58	5456.12	190.33	-103.73	687.50	40.4599022	-104.7400325	0.00
5604.00	7.99	98.58	5555.15	194.13	-105.80	701.24	40.4598965	-104.7399831	0.00
5704.00	7.99	98.58	5654.18	197.94	-107.87	714.98	40.4598908	-104.7399337	0.00
5804.00	7.99	98.58	5753.21	201.74	-109.94	728.72	40.4598851	-104.7398844	0.00
5904.00	7.99	98.58	5852.24	205.54	-112.02	742.45	40.4598794	-104.7398350	0.00
6004.00	7.99	98.58	5951.27	209.34	-114.09	756.19	40.4598738	-104.7397856	0.00
6104.00	7.99	98.58	6050.30	213.15	-116.16	769.93	40.4598681	-104.7397363	0.00
6204.00	7.99	98.58	6149.33	216.95	-118.23	783.67	40.4598624	-104.7396869	0.00
6304.00	7.99	98.58	6248.36	220.75	-120.31	797.40	40.4598567	-104.7396375	0.00
6404.00	7.99	98.58	6347.39	224.56	-122.38	811.14	40.4598510	-104.7395882	0.00
6504.00	7.99	98.58	6446.42	228.36	-124.45	824.88	40.4598453	-104.7395388	0.00
6591.45	7.99	98.58	6533.02	231.69	-126.26	836.89	40.4598403	-104.7394956	0.00
6604.00	8.22	106.42	6545.45	232.29	-126.65	838.61	40.4598393	-104.7394894	9.00
6704.00	13.74	145.72	6643.70	245.77	-138.51	852.19	40.4598067	-104.7394407	9.00
6804.00	21.70	159.90	6738.92	274.44	-165.73	865.26	40.4597320	-104.7393937	9.00
6904.00	30.23	166.53	6828.77	317.59	-207.66	877.50	40.4596169	-104.7393497	9.00
7004.00	38.96	170.43	6911.02	374.15	-263.26	888.61	40.4594643	-104.7393098	9.00
7104.00	47.77	173.08	6983.65	442.73	-331.15	898.32	40.4592779	-104.7392749	9.00
7204.00	56.64	175.07	7044.87	521.64	-409.68	906.39	40.4590624	-104.7392459	9.00
7304.00	65.52	176.69	7093.19	608.94	-496.89	912.62	40.4588230	-104.7392236	9.00
7404.00	74.43	178.10	7127.40	702.47	-590.65	916.85	40.4585656	-104.7392084	9.00
7504.00	83.34	179.39	7146.66	799.95	-688.65	918.99	40.4582966	-104.7392007	9.00
7577.99	89.93	180.31	7151.00	873.20	-762.48	919.18	40.4580940	-104.7392000	9.00
7604.00	89.93	180.31	7151.03	898.97	-788.48	919.04	40.4580226	-104.7392005	0.00
7704.00	89.93	180.31	7151.15	998.09	-888.48	918.51	40.4577481	-104.7392024	0.00

## CHALK\_20C-35-M\_REV-B.0\_PWP.las

7804.00	89.93	180.31	7151.26	1097.21	-988.48	917.97	40.4574736	-104.7392044	0.00
7904.00	89.93	180.31	7151.38	1196.33	-1088.48	917.44	40.4571992	-104.7392063	0.00
8004.00	89.93	180.31	7151.49	1295.45	-1188.48	916.90	40.4569247	-104.7392082	0.00
8104.00	89.93	180.31	7151.61	1394.57	-1288.47	916.37	40.4566502	-104.7392102	0.00
8204.00	89.93	180.31	7151.72	1493.68	-1388.47	915.84	40.4563757	-104.7392121	0.00
8304.00	89.93	180.31	7151.84	1592.80	-1488.47	915.30	40.4561012	-104.7392140	0.00
8404.00	89.93	180.31	7151.96	1691.92	-1588.47	914.77	40.4558268	-104.7392160	0.00
8504.00	89.93	180.31	7152.07	1791.04	-1688.47	914.23	40.4555523	-104.7392179	0.00
8604.00	89.93	180.31	7152.19	1890.16	-1788.47	913.70	40.4552778	-104.7392198	0.00
8704.00	89.93	180.31	7152.30	1989.28	-1888.47	913.16	40.4550033	-104.7392218	0.00
8804.00	89.93	180.31	7152.42	2088.39	-1988.46	912.63	40.4547288	-104.7392237	0.00
8904.00	89.93	180.31	7152.53	2187.51	-2088.46	912.09	40.4544543	-104.7392257	0.00
9004.00	89.93	180.31	7152.65	2286.63	-2188.46	911.56	40.4541799	-104.7392276	0.00
9104.00	89.93	180.31	7152.77	2385.75	-2288.46	911.02	40.4539054	-104.7392295	0.00
9204.00	89.93	180.31	7152.88	2484.87	-2388.46	910.49	40.4536309	-104.7392315	0.00
9304.00	89.93	180.31	7153.00	2583.99	-2488.46	909.95	40.4533564	-104.7392334	0.00
9404.00	89.93	180.31	7153.11	2683.10	-2588.46	909.42	40.4530819	-104.7392353	0.00
9504.00	89.93	180.31	7153.23	2782.22	-2688.45	908.88	40.4528074	-104.7392373	0.00
9604.00	89.93	180.31	7153.34	2881.34	-2788.45	908.35	40.4525330	-104.7392392	0.00
9704.00	89.93	180.31	7153.46	2980.46	-2888.45	907.82	40.4522585	-104.7392411	0.00
9804.00	89.93	180.31	7153.58	3079.58	-2988.45	907.28	40.4519840	-104.7392431	0.00
9904.00	89.93	180.31	7153.69	3178.70	-3088.45	906.75	40.4517095	-104.7392450	0.00
10004.00	89.93	180.31	7153.81	3277.81	-3188.45	906.21	40.4514350	-104.7392469	0.00
10104.00	89.93	180.31	7153.92	3376.93	-3288.44	905.68	40.4511605	-104.7392489	0.00
10204.00	89.93	180.31	7154.04	3476.05	-3388.44	905.14	40.4508861	-104.7392508	0.00
10304.00	89.93	180.31	7154.15	3575.17	-3488.44	904.61	40.4506116	-104.7392527	0.00
10404.00	89.93	180.31	7154.27	3674.29	-3588.44	904.07	40.4503371	-104.7392547	0.00
10504.00	89.93	180.31	7154.39	3773.41	-3688.44	903.54	40.4500626	-104.7392566	0.00
10604.00	89.93	180.31	7154.50	3872.52	-3788.44	903.00	40.4497881	-104.7392585	0.00
10704.00	89.93	180.31	7154.62	3971.64	-3888.44	902.47	40.4495136	-104.7392605	0.00
10804.00	89.93	180.31	7154.73	4070.76	-3988.43	901.93	40.4492391	-104.7392624	0.00
10904.00	89.93	180.31	7154.85	4169.88	-4088.43	901.40	40.4489647	-104.7392643	0.00
11004.00	89.93	180.31	7154.96	4269.00	-4188.43	900.87	40.4486902	-104.7392663	0.00
11104.00	89.93	180.31	7155.08	4368.12	-4288.43	900.33	40.4484157	-104.7392682	0.00

## CHALK\_20C-35-M\_REV-B.0\_PWP.las

11204.00	89.93	180.31	7155.20	4467.23	-4388.43	899.80	40.4481412	-104.7392701	0.00
11304.00	89.93	180.31	7155.31	4566.35	-4488.43	899.26	40.4478667	-104.7392721	0.00
11404.00	89.93	180.31	7155.43	4665.47	-4588.43	898.73	40.4475922	-104.7392740	0.00
11504.00	89.93	180.31	7155.54	4764.59	-4688.42	898.19	40.4473178	-104.7392759	0.00
11604.00	89.93	180.31	7155.66	4863.71	-4788.42	897.66	40.4470433	-104.7392779	0.00
11704.00	89.93	180.31	7155.77	4962.83	-4888.42	897.12	40.4467688	-104.7392798	0.00
11804.00	89.93	180.31	7155.89	5061.94	-4988.42	896.59	40.4464943	-104.7392817	0.00
11904.00	89.93	180.31	7156.01	5161.06	-5088.42	896.05	40.4462198	-104.7392837	0.00
12004.00	89.93	180.31	7156.12	5260.18	-5188.42	895.52	40.4459453	-104.7392856	0.00
12104.00	89.93	180.31	7156.24	5359.30	-5288.41	894.98	40.4456709	-104.7392875	0.00
12204.00	89.93	180.31	7156.35	5458.42	-5388.41	894.45	40.4453964	-104.7392895	0.00
12304.00	89.93	180.31	7156.47	5557.53	-5488.41	893.91	40.4451219	-104.7392914	0.00
12404.00	89.93	180.31	7156.58	5656.65	-5588.41	893.38	40.4448474	-104.7392933	0.00
12504.00	89.93	180.31	7156.70	5755.77	-5688.41	892.85	40.4445729	-104.7392953	0.00
12604.00	89.93	180.31	7156.82	5854.89	-5788.41	892.31	40.4442984	-104.7392972	0.00
12704.00	89.93	180.31	7156.93	5954.01	-5888.41	891.78	40.4440240	-104.7392991	0.00
12804.00	89.93	180.31	7157.05	6053.13	-5988.40	891.24	40.4437495	-104.7393011	0.00
12904.00	89.93	180.31	7157.16	6152.24	-6088.40	890.71	40.4434750	-104.7393030	0.00
13004.00	89.93	180.31	7157.28	6251.36	-6188.40	890.17	40.4432005	-104.7393049	0.00
13104.00	89.93	180.31	7157.39	6350.48	-6288.40	889.64	40.4429260	-104.7393069	0.00
13204.00	89.93	180.31	7157.51	6449.60	-6388.40	889.10	40.4426515	-104.7393088	0.00
13304.00	89.93	180.31	7157.63	6548.72	-6488.40	888.57	40.4423771	-104.7393108	0.00
13404.00	89.93	180.31	7157.74	6647.84	-6588.40	888.03	40.4421026	-104.7393127	0.00
13504.00	89.93	180.31	7157.86	6746.95	-6688.39	887.50	40.4418281	-104.7393146	0.00
13604.00	89.93	180.31	7157.97	6846.07	-6788.39	886.96	40.4415536	-104.7393166	0.00
13627.17	89.93	180.31	7158.00	6869.04	-6811.56	886.84	40.4414900	-104.7393170	0.00
13630.59	90.00	180.32	7158.00	6872.43	-6814.98	886.82	40.4414806	-104.7393171	2.00
13704.00	90.00	180.32	7158.00	6945.19	-6888.39	886.41	40.4412791	-104.7393185	0.00
13727.00	90.00	180.32	7158.00	6967.98	-6911.39	886.29	40.4412160	-104.7393190	0.00



# Planned Wellpath Report

## CHALK 20C-35-M (REV-B.0) PWP

Page 1 of 9



### REFERENCE WELLPATH IDENTIFICATION

Operator	SRC ENERGY	Slot	SLOT#33 CHALK 20C-35-M (2330'FNL & 2131'FEL, SEC.26)
Area	COLORADO	Well	CHALK 20C-35-M
Field	WELD COUNTY (NAD83,TRUE NORTH)	Wellbore	CHALK 20C-35-M PWB
Facility	SEC.26-T06N-R66W		

### REPORT SETUP INFORMATION

Projection System	NAD83 / Lambert Colorado SP, Northern Zone (501), US feet	Software System	WellArchitect® 5.0
North Reference	True	User	Doddanna
Scale	0.999964	Report Generated	8/8/2018 at 9:58:55 AM
Convergence at slot	0.49° East	Database/Source file	WellArchitectDB2/CHALK_20C-35-M__REV-B.0__PWP.xml

### WELLPATH LOCATION

	Local coordinates		Grid coordinates		Geographic coordinates	
	North[ft]	East[ft]	Easting[US ft]	Northing[US ft]	Latitude	Longitude
Slot Location	-617.91	-532.89	3210780.88	1411386.75	40°27'36.673"N	104°44'33.011"W
Facility Reference Pt			3211308.44	1412009.18	40°27'42.779"N	104°44'26.117"W
Field Reference Pt			3171284.48	1426358.81	40°30'07.643"N	104°53'02.634"W

### WELLPATH DATUM

Calculation method	Minimum curvature	PROPETRO 12 (4') (RKB) to Facility Vertical Datum	4700.00ft
Horizontal Reference Pt	Slot	PROPETRO 12 (4') (RKB) to Mean Sea Level	4700.00ft
Vertical Reference Pt	PROPETRO 12 (4') (RKB)	PROPETRO 12 (4') (RKB) to Mud Line at Slot (SLOT#33 CHALK 20C-35-M (2330'FNL & 2131'FEL, SEC.26))	4700.00ft
MD Reference Pt	PROPETRO 12 (4') (RKB)	Section Origin	N 0.00, E 0.00 ft
Field Vertical Reference	Mean Sea Level	Section Azimuth	172.69°





# Planned Wellpath Report

## CHALK 20C-35-M (REV-B.0) PWP

Page 2 of 9



### REFERENCE WELLPATH IDENTIFICATION

Operator	SRC ENERGY	Slot	SLOT#33 CHALK 20C-35-M (2330'FNL & 2131'FEL, SEC.26)
Area	COLORADO	Well	CHALK 20C-35-M
Field	WELD COUNTY (NAD83,TRUE NORTH)	Wellbore	CHALK 20C-35-M PWB
Facility	SEC.26-T06N-R66W		

### WELLPATH DATA (146 stations) † = interpolated/extrapolated station

MD [ft]	Inclination [°]	Azimuth [°]	TVD [ft]	Vert Sect [ft]	North [ft]	East [ft]	DLS [°/100ft]	Comments
0.00†	0.000	98.580	0.00	0.00	0.00	0.00	0.00	
4.00	0.000	98.580	4.00	0.00	0.00	0.00	0.00	Tie On
104.00†	0.000	98.580	104.00	0.00	0.00	0.00	0.00	
204.00†	0.000	98.580	204.00	0.00	0.00	0.00	0.00	
300.00	0.000	98.580	300.00	0.00	0.00	0.00	0.00	End of Tangent
304.00†	0.080	98.580	304.00	0.00	0.00	0.00	2.00	
404.00†	2.080	98.580	403.98	0.52	-0.28	1.87	2.00	
504.00†	4.080	98.580	503.83	1.99	-1.08	7.18	2.00	
604.00†	6.080	98.580	603.43	4.41	-2.40	15.93	2.00	
699.29	7.986	98.580	698.00	7.60	-4.14	27.47	2.00	End of Build (XS)
704.00†	7.986	98.580	702.66	7.78	-4.24	28.12	0.00	
804.00†	7.986	98.580	801.69	11.59	-6.31	41.85	0.00	
904.00†	7.986	98.580	900.72	15.39	-8.39	55.59	0.00	
1004.00†	7.986	98.580	999.75	19.19	-10.46	69.33	0.00	
1104.00†	7.986	98.580	1098.78	23.00	-12.53	83.07	0.00	
1204.00†	7.986	98.580	1197.81	26.80	-14.60	96.80	0.00	
1304.00†	7.986	98.580	1296.84	30.60	-16.68	110.54	0.00	
1404.00†	7.986	98.580	1395.87	34.41	-18.75	124.28	0.00	
1504.00†	7.986	98.580	1494.90	38.21	-20.82	138.02	0.00	
1604.00†	7.986	98.580	1593.94	42.01	-22.90	151.75	0.00	
1704.00†	7.986	98.580	1692.97	45.81	-24.97	165.49	0.00	
1804.00†	7.986	98.580	1792.00	49.62	-27.04	179.23	0.00	
1904.00†	7.986	98.580	1891.03	53.42	-29.11	192.96	0.00	
2004.00†	7.986	98.580	1990.06	57.22	-31.19	206.70	0.00	
2104.00†	7.986	98.580	2089.09	61.03	-33.26	220.44	0.00	
2204.00†	7.986	98.580	2188.12	64.83	-35.33	234.18	0.00	
2304.00†	7.986	98.580	2287.15	68.63	-37.40	247.91	0.00	
2404.00†	7.986	98.580	2386.18	72.44	-39.48	261.65	0.00	
2504.00†	7.986	98.580	2485.21	76.24	-41.55	275.39	0.00	
2604.00†	7.986	98.580	2584.24	80.04	-43.62	289.12	0.00	



# Planned Wellpath Report

## CHALK 20C-35-M (REV-B.0) PWP

Page 3 of 9



REFERENCE WELLPATH IDENTIFICATION			
Operator	SRC ENERGY	Slot	SLOT#33 CHALK 20C-35-M (2330'FNL & 2131'FEL, SEC.26)
Area	COLORADO	Well	CHALK 20C-35-M
Field	WELD COUNTY (NAD83,TRUE NORTH)	Wellbore	CHALK 20C-35-M PWB
Facility	SEC.26-T06N-R66W		

WELLPATH DATA (146 stations) † = interpolated/extrapolated station								
MD [ft]	Inclination [°]	Azimuth [°]	TVD [ft]	Vert Sect [ft]	North [ft]	East [ft]	DLS [°/100ft]	Comments
2704.00†	7.986	98.580	2683.27	83.84	-45.69	302.86	0.00	
2804.00†	7.986	98.580	2782.30	87.65	-47.77	316.60	0.00	
2904.00†	7.986	98.580	2881.33	91.45	-49.84	330.34	0.00	
3004.00†	7.986	98.580	2980.36	95.25	-51.91	344.07	0.00	
3104.00†	7.986	98.580	3079.39	99.06	-53.98	357.81	0.00	
3204.00†	7.986	98.580	3178.42	102.86	-56.06	371.55	0.00	
3304.00†	7.986	98.580	3277.45	106.66	-58.13	385.29	0.00	
3404.00†	7.986	98.580	3376.48	110.47	-60.20	399.02	0.00	
3504.00†	7.986	98.580	3475.51	114.27	-62.27	412.76	0.00	
3604.00†	7.986	98.580	3574.54	118.07	-64.35	426.50	0.00	
3704.00†	7.986	98.580	3673.57	121.88	-66.42	440.23	0.00	
3804.00†	7.986	98.580	3772.60	125.68	-68.49	453.97	0.00	
3904.00†	7.986	98.580	3871.63	129.48	-70.56	467.71	0.00	
4004.00†	7.986	98.580	3970.66	133.28	-72.64	481.45	0.00	
4104.00†	7.986	98.580	4069.69	137.09	-74.71	495.18	0.00	
4204.00†	7.986	98.580	4168.72	140.89	-76.78	508.92	0.00	
4304.00†	7.986	98.580	4267.75	144.69	-78.85	522.66	0.00	
4404.00†	7.986	98.580	4366.78	148.50	-80.93	536.39	0.00	
4504.00†	7.986	98.580	4465.81	152.30	-83.00	550.13	0.00	
4604.00†	7.986	98.580	4564.84	156.10	-85.07	563.87	0.00	
4704.00†	7.986	98.580	4663.87	159.91	-87.14	577.61	0.00	
4804.00†	7.986	98.580	4762.90	163.71	-89.22	591.34	0.00	
4904.00†	7.986	98.580	4861.93	167.51	-91.29	605.08	0.00	
5004.00†	7.986	98.580	4960.96	171.31	-93.36	618.82	0.00	
5104.00†	7.986	98.580	5059.99	175.12	-95.44	632.56	0.00	
5204.00†	7.986	98.580	5159.02	178.92	-97.51	646.29	0.00	
5304.00†	7.986	98.580	5258.05	182.72	-99.58	660.03	0.00	
5404.00†	7.986	98.580	5357.09	186.53	-101.65	673.77	0.00	
5504.00†	7.986	98.580	5456.12	190.33	-103.73	687.50	0.00	
5604.00†	7.986	98.580	5555.15	194.13	-105.80	701.24	0.00	



# Planned Wellpath Report

## CHALK 20C-35-M (REV-B.0) PWP

Page 4 of 9



REFERENCE WELLPATH IDENTIFICATION			
Operator	SRC ENERGY	Slot	SLOT#33 CHALK 20C-35-M (2330'FNL & 2131'FEL, SEC.26)
Area	COLORADO	Well	CHALK 20C-35-M
Field	WELD COUNTY (NAD83,TRUE NORTH)	Wellbore	CHALK 20C-35-M PWB
Facility	SEC.26-T06N-R66W		

WELLPATH DATA (146 stations) † = interpolated/extrapolated station								
MD [ft]	Inclination [°]	Azimuth [°]	TVD [ft]	Vert Sect [ft]	North [ft]	East [ft]	DLS [°/100ft]	Comments
5704.00†	7.986	98.580	5654.18	197.94	-107.87	714.98	0.00	
5804.00†	7.986	98.580	5753.21	201.74	-109.94	728.72	0.00	
5904.00†	7.986	98.580	5852.24	205.54	-112.02	742.45	0.00	
6004.00†	7.986	98.580	5951.27	209.34	-114.09	756.19	0.00	
6104.00†	7.986	98.580	6050.30	213.15	-116.16	769.93	0.00	
6204.00†	7.986	98.580	6149.33	216.95	-118.23	783.67	0.00	
6304.00†	7.986	98.580	6248.36	220.75	-120.31	797.40	0.00	
6404.00†	7.986	98.580	6347.39	224.56	-122.38	811.14	0.00	
6504.00†	7.986	98.580	6446.42	228.36	-124.45	824.88	0.00	
6591.45	7.986	98.580	6533.02	231.69	-126.26	836.89	0.00	End of Tangent (XS)
6604.00†	8.222	106.421	6545.45	232.29	-126.65	838.61	9.00	
6704.00†	13.739	145.717	6643.70	245.77	-138.51	852.19	9.00	
6804.00†	21.699	159.897	6738.92	274.44	-165.73	865.26	9.00	
6904.00†	30.230	166.533	6828.77	317.59	-207.66	877.50	9.00	
7004.00†	38.958	170.429	6911.02	374.15	-263.26	888.61	9.00	
7104.00†	47.774	173.077	6983.65	442.73	-331.15	898.32	9.00	
7204.00†	56.636	175.070	7044.87	521.64	-409.68	906.39	9.00	
7304.00†	65.524	176.692	7093.19	608.94	-496.89	912.62	9.00	
7404.00†	74.427	178.098	7127.40	702.47	-590.65	916.85	9.00	
7504.00†	83.338	179.386	7146.66	799.95	-688.65	918.99	9.00	
7577.99	89.934	180.306	7151.00†	873.20	-762.48	919.18	9.00	End of 3D Arc (XS)
7604.00†	89.934	180.306	7151.03	898.97	-788.48	919.04	0.00	
7704.00†	89.934	180.306	7151.15	998.09	-888.48	918.51	0.00	
7804.00†	89.934	180.306	7151.26	1097.21	-988.48	917.97	0.00	
7904.00†	89.934	180.306	7151.38	1196.33	-1088.48	917.44	0.00	
8004.00†	89.934	180.306	7151.49	1295.45	-1188.48	916.90	0.00	
8104.00†	89.934	180.306	7151.61	1394.57	-1288.47	916.37	0.00	
8204.00†	89.934	180.306	7151.72	1493.68	-1388.47	915.84	0.00	
8304.00†	89.934	180.306	7151.84	1592.80	-1488.47	915.30	0.00	
8404.00†	89.934	180.306	7151.96	1691.92	-1588.47	914.77	0.00	



# Planned Wellpath Report

## CHALK 20C-35-M (REV-B.0) PWP

Page 5 of 9



REFERENCE WELLPATH IDENTIFICATION			
Operator	SRC ENERGY	Slot	SLOT#33 CHALK 20C-35-M (2330'FNL & 2131'FEL, SEC.26)
Area	COLORADO	Well	CHALK 20C-35-M
Field	WELD COUNTY (NAD83,TRUE NORTH)	Wellbore	CHALK 20C-35-M PWB
Facility	SEC.26-T06N-R66W		

WELLPATH DATA (146 stations) † = interpolated/extrapolated station								
MD [ft]	Inclination [°]	Azimuth [°]	TVD [ft]	Vert Sect [ft]	North [ft]	East [ft]	DLS [°/100ft]	Comments
8504.00†	89.934	180.306	7152.07	1791.04	-1688.47	914.23	0.00	
8604.00†	89.934	180.306	7152.19	1890.16	-1788.47	913.70	0.00	
8704.00†	89.934	180.306	7152.30	1989.28	-1888.47	913.16	0.00	
8804.00†	89.934	180.306	7152.42	2088.39	-1988.46	912.63	0.00	
8904.00†	89.934	180.306	7152.53	2187.51	-2088.46	912.09	0.00	
9004.00†	89.934	180.306	7152.65	2286.63	-2188.46	911.56	0.00	
9104.00†	89.934	180.306	7152.77	2385.75	-2288.46	911.02	0.00	
9204.00†	89.934	180.306	7152.88	2484.87	-2388.46	910.49	0.00	
9304.00†	89.934	180.306	7153.00	2583.99	-2488.46	909.95	0.00	
9404.00†	89.934	180.306	7153.11	2683.10	-2588.46	909.42	0.00	
9504.00†	89.934	180.306	7153.23	2782.22	-2688.45	908.88	0.00	
9604.00†	89.934	180.306	7153.34	2881.34	-2788.45	908.35	0.00	
9704.00†	89.934	180.306	7153.46	2980.46	-2888.45	907.82	0.00	
9804.00†	89.934	180.306	7153.58	3079.58	-2988.45	907.28	0.00	
9904.00†	89.934	180.306	7153.69	3178.70	-3088.45	906.75	0.00	
10004.00†	89.934	180.306	7153.81	3277.81	-3188.45	906.21	0.00	
10104.00†	89.934	180.306	7153.92	3376.93	-3288.44	905.68	0.00	
10204.00†	89.934	180.306	7154.04	3476.05	-3388.44	905.14	0.00	
10304.00†	89.934	180.306	7154.15	3575.17	-3488.44	904.61	0.00	
10404.00†	89.934	180.306	7154.27	3674.29	-3588.44	904.07	0.00	
10504.00†	89.934	180.306	7154.39	3773.41	-3688.44	903.54	0.00	
10604.00†	89.934	180.306	7154.50	3872.52	-3788.44	903.00	0.00	
10704.00†	89.934	180.306	7154.62	3971.64	-3888.44	902.47	0.00	
10804.00†	89.934	180.306	7154.73	4070.76	-3988.43	901.93	0.00	
10904.00†	89.934	180.306	7154.85	4169.88	-4088.43	901.40	0.00	
11004.00†	89.934	180.306	7154.96	4269.00	-4188.43	900.87	0.00	
11104.00†	89.934	180.306	7155.08	4368.12	-4288.43	900.33	0.00	
11204.00†	89.934	180.306	7155.20	4467.23	-4388.43	899.80	0.00	
11304.00†	89.934	180.306	7155.31	4566.35	-4488.43	899.26	0.00	
11404.00†	89.934	180.306	7155.43	4665.47	-4588.43	898.73	0.00	



# Planned Wellpath Report

## CHALK 20C-35-M (REV-B.0) PWP

Page 6 of 9



REFERENCE WELLPATH IDENTIFICATION			
Operator	SRC ENERGY	Slot	SLOT#33 CHALK 20C-35-M (2330'FNL & 2131'FEL, SEC.26)
Area	COLORADO	Well	CHALK 20C-35-M
Field	WELD COUNTY (NAD83,TRUE NORTH)	Wellbore	CHALK 20C-35-M PWB
Facility	SEC.26-T06N-R66W		

### WELLPATH DATA (146 stations) † = interpolated/extrapolated station

MD [ft]	Inclination [°]	Azimuth [°]	TVD [ft]	Vert Sect [ft]	North [ft]	East [ft]	DLS [°/100ft]	Comments
11504.00†	89.934	180.306	7155.54	4764.59	-4688.42	898.19	0.00	
11604.00†	89.934	180.306	7155.66	4863.71	-4788.42	897.66	0.00	
11704.00†	89.934	180.306	7155.77	4962.83	-4888.42	897.12	0.00	
11804.00†	89.934	180.306	7155.89	5061.94	-4988.42	896.59	0.00	
11904.00†	89.934	180.306	7156.01	5161.06	-5088.42	896.05	0.00	
12004.00†	89.934	180.306	7156.12	5260.18	-5188.42	895.52	0.00	
12104.00†	89.934	180.306	7156.24	5359.30	-5288.41	894.98	0.00	
12204.00†	89.934	180.306	7156.35	5458.42	-5388.41	894.45	0.00	
12304.00†	89.934	180.306	7156.47	5557.53	-5488.41	893.91	0.00	
12404.00†	89.934	180.306	7156.58	5656.65	-5588.41	893.38	0.00	
12504.00†	89.934	180.306	7156.70	5755.77	-5688.41	892.85	0.00	
12604.00†	89.934	180.306	7156.82	5854.89	-5788.41	892.31	0.00	
12704.00†	89.934	180.306	7156.93	5954.01	-5888.41	891.78	0.00	
12804.00†	89.934	180.306	7157.05	6053.13	-5988.40	891.24	0.00	
12904.00†	89.934	180.306	7157.16	6152.24	-6088.40	890.71	0.00	
13004.00†	89.934	180.306	7157.28	6251.36	-6188.40	890.17	0.00	
13104.00†	89.934	180.306	7157.39	6350.48	-6288.40	889.64	0.00	
13204.00†	89.934	180.306	7157.51	6449.60	-6388.40	889.10	0.00	
13304.00†	89.934	180.306	7157.63	6548.72	-6488.40	888.57	0.00	
13404.00†	89.934	180.306	7157.74	6647.84	-6588.40	888.03	0.00	
13504.00†	89.934	180.306	7157.86	6746.95	-6688.39	887.50	0.00	
13604.00†	89.934	180.306	7157.97	6846.07	-6788.39	886.96	0.00	
13627.17	89.934	180.306	7158.00 <sup>2</sup>	6869.04	-6811.56	886.84	0.00	End of Tangent (XS)
13630.59	90.001	180.318	7158.00	6872.43	-6814.98	886.82	2.00	End of 3D Arc
13704.00†	90.001	180.318	7158.00	6945.19	-6888.39	886.41	0.00	
13727.00	90.001	180.318	7158.00 <sup>3</sup>	6967.98	-6911.39	886.29	0.00	End of Tangent



# Planned Wellpath Report

## CHALK 20C-35-M (REV-B.0) PWP

Page 7 of 9



REFERENCE WELLPATH IDENTIFICATION			
Operator	SRC ENERGY	Slot	SLOT#33 CHALK 20C-35-M (2330'FNL & 2131'FEL, SEC.26)
Area	COLORADO	Well	CHALK 20C-35-M
Field	WELD COUNTY (NAD83,TRUE NORTH)	Wellbore	CHALK 20C-35-M PWB
Facility	SEC.26-T06N-R66W		

HOLE & CASING SECTIONS - Ref Wellbore: CHALK 20C-35-M PWB      Ref Wellpath: CHALK 20C-35-M (REV-B.0) PWP									
String/Diameter	Start MD [ft]	End MD [ft]	Interval [ft]	Start TVD [ft]	End TVD [ft]	Start N/S [ft]	Start E/W [ft]	End N/S [ft]	End E/W [ft]
13.5in Open Hole	4.00	1750.00	1746.00	4.00	1738.52	0.00	0.00	-25.92	171.81
9.625in Casing Surface	4.00	1750.00	1746.00	4.00	1738.52	0.00	0.00	-25.92	171.81
8.5in Open Hole	1750.00	13727.00	11977.00	1738.52	7158.00	-25.92	171.81	-6911.39	886.29



# Planned Wellpath Report

## CHALK 20C-35-M (REV-B.0) PWP

Page 8 of 9



REFERENCE WELLPATH IDENTIFICATION			
Operator	SRC ENERGY	Slot	SLOT#33 CHALK 20C-35-M (2330'FNL & 2131'FEL, SEC.26)
Area	COLORADO	Well	CHALK 20C-35-M
Field	WELD COUNTY (NAD83,TRUE NORTH)	Wellbore	CHALK 20C-35-M PWB
Facility	SEC.26-T06N-R66W		

TARGETS									
Name	MD [ft]	TVD [ft]	North [ft]	East [ft]	Grid East [US ft]	Grid North [US ft]	Latitude	Longitude	Shape
EAST HALF OF SEC.02-T05N-R66W		-23.00	617.93	532.88	3211308.44	1412009.18	40°27'42.779"N	104°44'26.117"W	polygon
EAST HALF OF SEC.26-T06N-R66W		-23.00	617.93	532.88	3211308.44	1412009.18	40°27'42.779"N	104°44'26.117"W	polygon
EAST HALF OF SEC.35-T06N-R66W		-23.00	617.93	532.88	3211308.44	1412009.18	40°27'42.779"N	104°44'26.117"W	polygon
SEC.25-T06N-R66W		-23.00	617.93	532.88	3211308.44	1412009.18	40°27'42.779"N	104°44'26.117"W	polygon
SEC.30-T06N-R65W		-23.00	617.93	532.88	3211308.44	1412009.18	40°27'42.779"N	104°44'26.117"W	polygon
SOUTH HALF OF SEC.19-T06N-R65W		-23.00	617.93	532.88	3211308.44	1412009.18	40°27'42.779"N	104°44'26.117"W	polygon
SOUTH HALF OF SEC.24-T06N-R66W		-23.00	617.93	532.88	3211308.44	1412009.18	40°27'42.779"N	104°44'26.117"W	polygon
1) CHALK 20C-35-M TOP OF PROD ON PLAT (2166'FSL & 1221'FEL, SEC.26)	7577.99	7151.00	-762.48	919.18	3211706.50	1410632.18	40°27'29.138"N	104°44'21.120"W	circle
CHALK 20C-35-M BHL ON PLAT (1496'FSL & 1233'FEL, SEC.35)		7158.00	-6811.56	886.84	3211725.84	1404583.27	40°26'29.364"N	104°44'21.541"W	circle
3) CHALK 20C-35-M BHL ON PLAT REV-2 (1396'FSL & 1233'FEL, SEC.35)	13727.00	7158.00	-6911.39	886.29	3211726.14	1404483.45	40°26'28.378"N	104°44'21.548"W	circle
2) CHALK 20C-35-M BPZ ON PLAT (1496'FSL & 1233'FEL, SEC.35)	13627.17	7158.00	-6811.56	886.84	3211725.84	1404583.27	40°26'29.364"N	104°44'21.541"W	circle





# Planned Wellpath Report

CHALK 20C-35-M (REV-B.0) PWP

Page 9 of 9



REFERENCE WELLPATH IDENTIFICATION			
Operator	SRC ENERGY	Slot	SLOT#33 CHALK 20C-35-M (2330'FNL & 2131'FEL, SEC.26)
Area	COLORADO	Well	CHALK 20C-35-M
Field	WELD COUNTY (NAD83,TRUE NORTH)	Wellbore	CHALK 20C-35-M PWB
Facility	SEC.26-T06N-R66W		

SURVEY PROGRAM - Ref Wellbore: CHALK 20C-35-M PWB Ref Wellpath: CHALK 20C-35-M (REV-B.0) PWP				
Start MD [ft]	End MD [ft]	Positional Uncertainty Model	Log Name/Comment	Wellbore
4.00	1750.00	BHI NaviTrak (Rotating+Axial Corr)		CHALK 20C-35-M PWB
1750.00	13727.00	BHI AutoTrak Curve (MagCAD+IFR1, Short spacing)		CHALK 20C-35-M PWB