



FINISHED WELL PAD GRADE ELEVATION = 8086.1'

FINISHED STAGING AREA GRADE ELEVATION = 8089.0'

- NOTES:**
- Flare stack is to be located a min. of 100' from the wellhead.
  - Round corners at 35' radius or as needed.
  - Construct diversion ditches as needed.
  - Contours shown at 2' intervals.
  - Cut/Fill slopes 1 1/2:1 (Typ.).



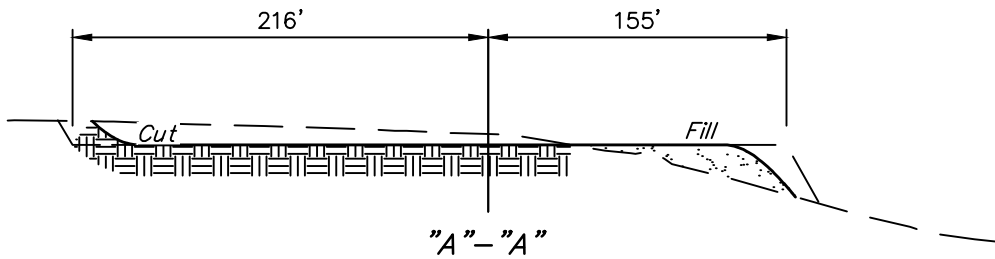
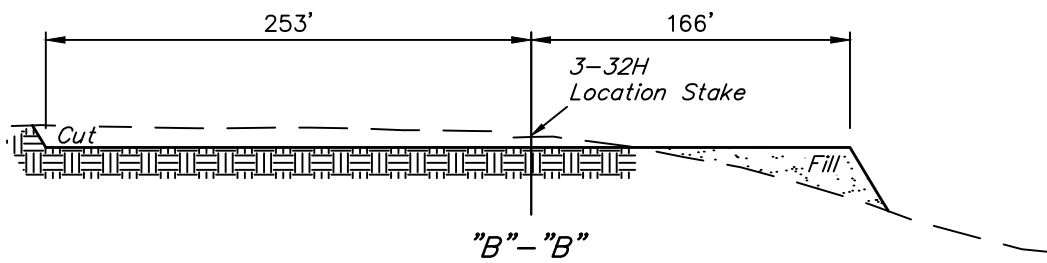
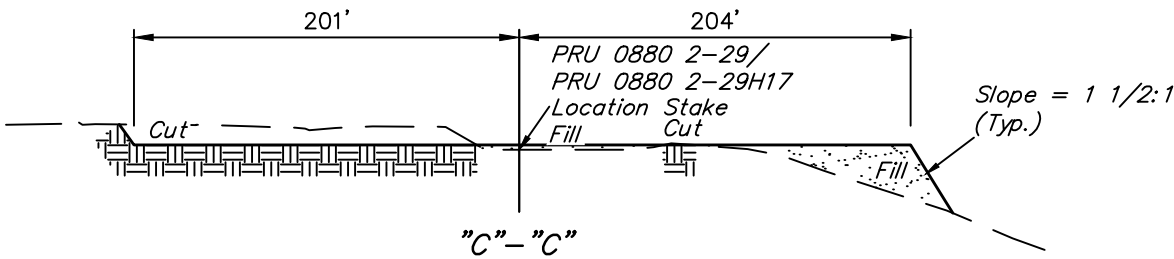
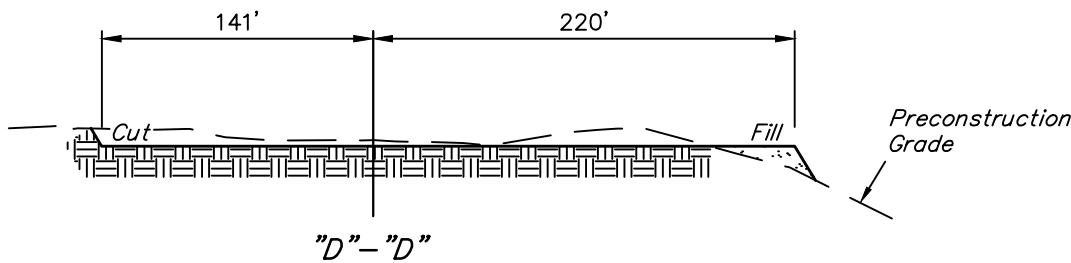
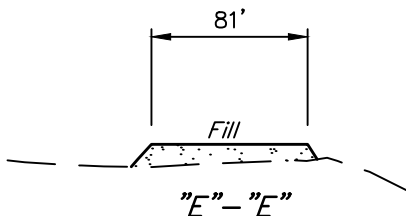
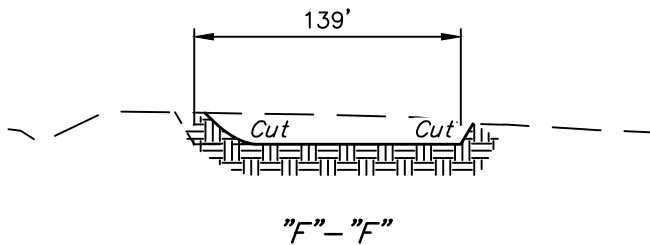
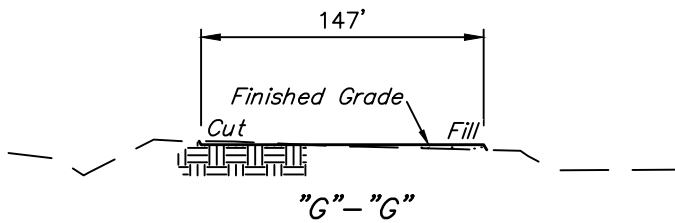
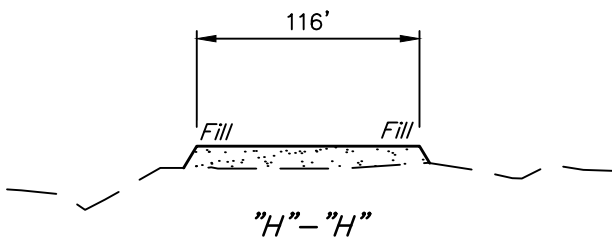
**UELS, LLC**  
Corporate Office \* 85 South 200 East  
Vernal, UT 84078 \* (435) 789-1017

**SandRidge Exploration & Production, LLC**

**OXBOW 0880 S29 PAD**  
SW 1/4 SE 1/4, SECTION 29 &  
NW 1/4 NE 1/4, SECTION 32 T8N, R80W, 6th P.M.  
JACKSON COUNTY, COLORADO

SURVEYED BY	JARED CHRISTOPHER., G.W.	04-10-17	SCALE
DRAWN BY	T.B.	04-19-17	1" = 100'
CONSTRUCTION LAYOUT		FIGURE #1	

1" = 40'  
X-Section  
Scale  
1" = 100'



WELL PAD	
APPROXIMATE EARTHWORK QUANTITIES	
(6") TOPSOIL STRIPPING	5,080 Cu. Yds.
REMAINING LOCATION	16,580 Cu. Yds.
<b>TOTAL CUT</b>	<b>21,660 Cu. Yds.</b>
<b>FILL</b>	<b>16,580 Cu. Yds.</b>
EXCESS MATERIAL	5,080 Cu. Yds.
TOPSOIL	5,080 Cu. Yds.
<b>EXCESS UNBALANCE</b> (After Interim Rehabilitation)	<b>0 Cu. Yds.</b>

APPROXIMATE SURFACE DISTURBANCE AREAS		
	DISTANCE	ACRES
WELL PAD SITE DISTURBANCE	NA	±6.700
STAGING AREA SITE DISTURBANCE	NA	±1.154
30' WIDE ACCESS ROAD A R-O-W DISTURBANCE	±935'	±0.644
30' WIDE ACCESS ROAD B R-O-W DISTURBANCE	±43'	±0.030
<b>TOTAL SURFACE USE AREA</b>		<b>±8.528</b>

STAGING AREA	
APPROXIMATE EARTHWORK QUANTITIES	
(6") TOPSOIL STRIPPING	930 Cu. Yds.
REMAINING LOCATION	2,360 Cu. Yds.
<b>TOTAL CUT</b>	<b>3,290 Cu. Yds.</b>
<b>FILL</b>	<b>2,360 Cu. Yds.</b>
EXCESS MATERIAL	930 Cu. Yds.
TOPSOIL	930 Cu. Yds.
<b>EXCESS UNBALANCE</b> (After Interim Rehabilitation)	<b>0 Cu. Yds.</b>

REV: 9 05-29-18 T.L.L. (PAD, SHL & ROAD CHANGES)

- NOTES:**
- Fill quantity includes 5% for compaction.
  - Calculations based on 6" of topsoil stripping.
  - Cut/Fill slopes 1 1/2:1 (Typ).

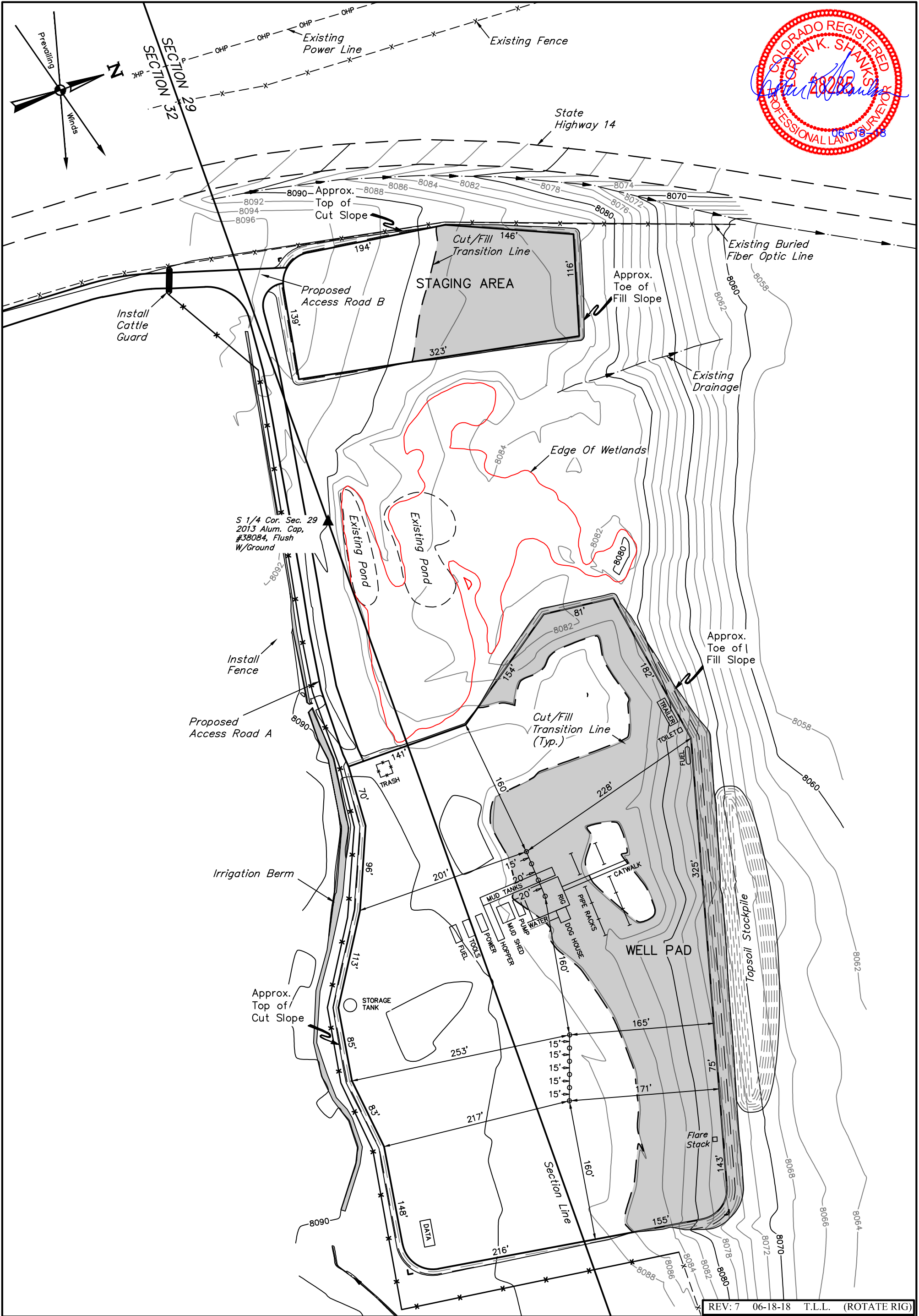
**SandRidge Exploration & Production, LLC**

**OXBOW 0880 S29 PAD**  
**SW 1/4 SE 1/4, SECTION 29 &**  
**NW 1/4 NE 1/4, SECTION 32 T8N, R80W, 6th P.M.**  
**JACKSON COUNTY, COLORADO**

<b>SURVEYED BY</b>	JARED CHRISTOPHER, G.W.	04-10-17	<b>SCALE</b>
<b>DRAWN BY</b>	T.B.	04-19-17	AS SHOWN
<b>CONSTRUCTION LAYOUT CROSS SECTIONS</b>			<b>FIGURE #2</b>



**UELS, LLC**  
Corporate Office \* 85 South 200 East  
Vernal, UT 84078 \* (435) 789-1017



- NOTES:**
- Flare stack is to be located a min. of 100' from the wellhead.
  - Contours shown at 2' intervals.

**SandRidge Exploration & Production, LLC**

**OXBOW 0880 S29 PAD**  
**SW 1/4 SE 1/4, SECTION 29 &**  
**NW 1/4 NE 1/4, SECTION 32 T8N, R80W, 6th P.M.**  
**JACKSON COUNTY, COLORADO**

SURVEYED BY	JARED CHRISTOPHER., G.W.	04-10-17	SCALE
DRAWN BY	T.B.	04-19-17	1" = 100'

**TYPICAL RIG LAYOUT**

**FIGURE #3**



**UELS, LLC**  
Corporate Office \* 85 South 200 East  
Vernal, UT 84078 \* (435) 789-1017