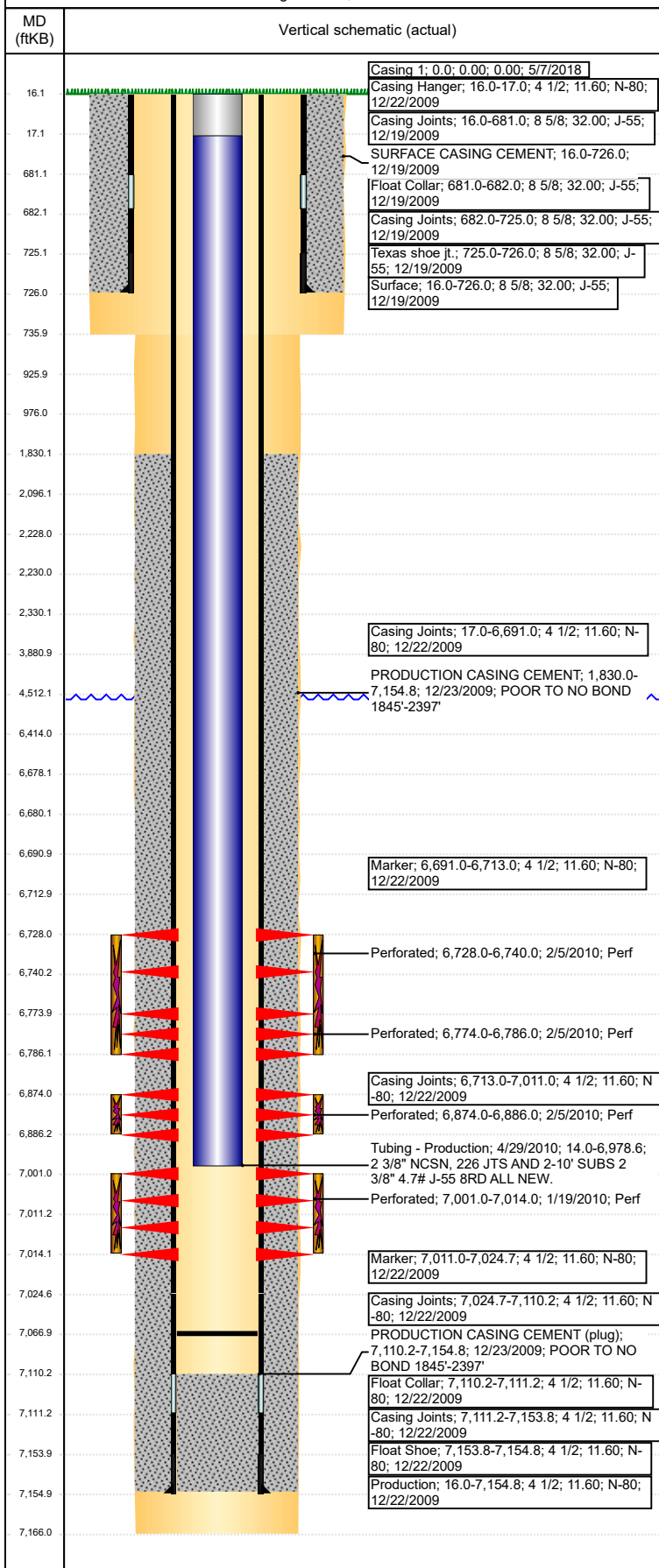


**Well Name: LDS D17-33**

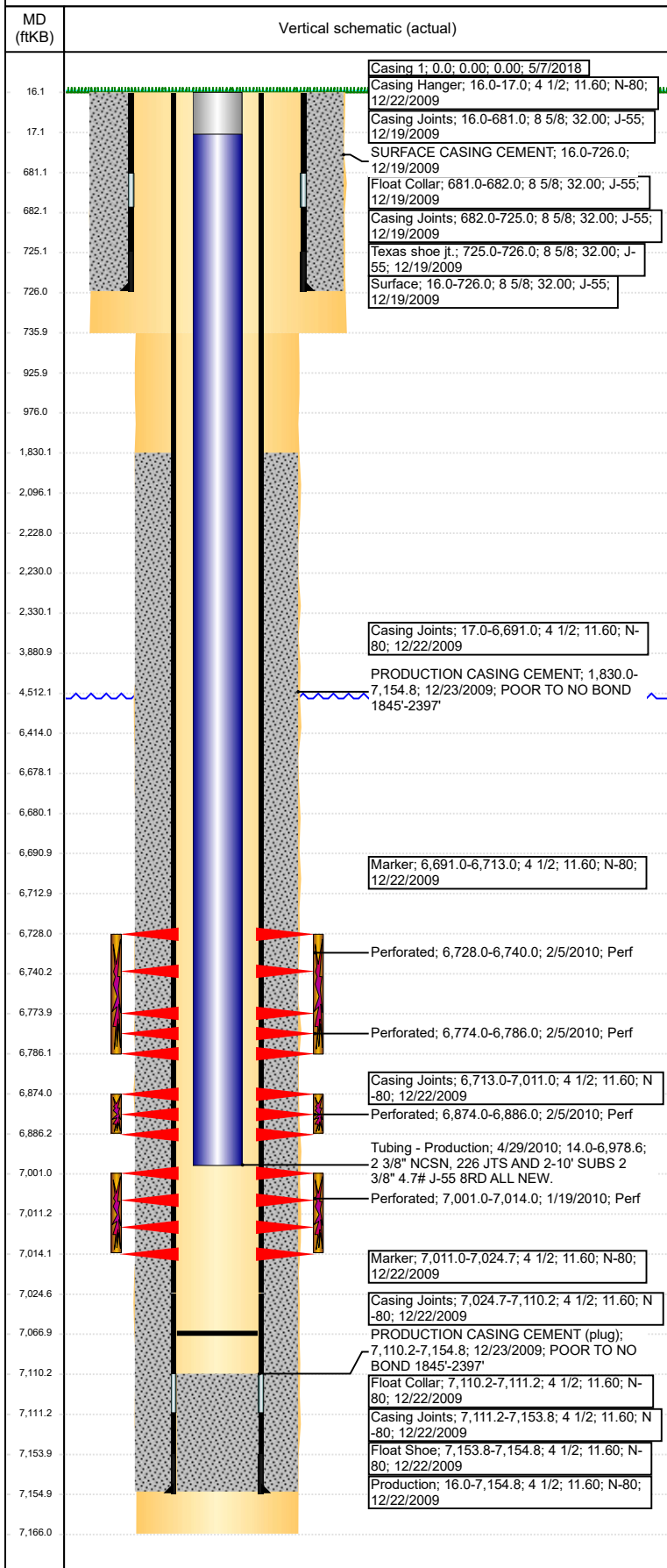
VERTICAL - Original Hole, 8/27/2018 3:03:20 PM



Well Header							
API 05-123-30002		Well Report Center 425743475		Well Configuration Type VERTICAL			
Original KB Elevation (ft) 4,776		KB - GL / MSL (ftKB) 16.00		Spud Date 12/18/2009		P & A Date	
Production Route C1-03			Well Production Status PR				SoRT Ignore No
Directions To Well WCR 49 & WCR 32, 1 MILE EAST, 0.25 MILE NORTH, EAST INTO LOCATION				Actual Latitude (°) 40.22196003		Actual Longitude (°) -104.58373677	
Comment NOTE: 318A.e LOCATION. SPECIAL LOGGING INSTRUCTIONS!!							
Congressional Location							
Quarter 3 NW	Quarter 4 SW	Section 17	Township 3	Twntshp N/S Dir N	Range 64	Range E/W Dir W	
Rig Operator							
Rig Operator							
Plug Back Total Depths							
Date	Depth (ftKB)	Method			Com		
4/28/2010	7,067.0	TBG TALLY					
Wellbore Sections							
Section Des		Size (in)		Act Top, MD (ftKB)		Act Btm, MD (ftKB)	
SURFACE		12 1/4		16		736	
PRODUCTION		7 7/8		736		7,166	
Zone Statuses							
Zone Name		Status Date			Status		
NIOBRARA		2/6/2010			PR		
CODELL		2/6/2010			PR		
Casing Strings							
<des>, <depth>ftKB							
Casing Description	Run Date	OD (in)	Wt/Len (l...	Grade	Top, MD (ft...	MD (ftKB)	
	5/7/2018						
Surface, 726.0ftKB							
Casing Description	Run Date	OD (in)	Wt/Len (l...	Grade	Top, MD (ft...	MD (ftKB)	
Surface	12/19/2009	8 5/8	32.00	J-55	16.0	726.0	
Production, 7,154.8ftKB							
Casing Description	Run Date	OD (in)	Wt/Len (l...	Grade	Top, MD (ft...	MD (ftKB)	
Production	12/22/2009	4 1/2	11.60	N-80	16.0	7,154.8	
Cement							
Des			Start Date		Top (ftKB)	Btm (ftKB)	
SURFACE CASING CEMENT			12/19/2009		16.0	726.0	
PRODUCTION CASING CEMENT			12/23/2009		1,830.0	7,154.8	
Proposed Cement							
Des					Top (ftKB)	Btm (ftKB)	
Balance Plug					926.0	976.0	
Balance Plug					3,881.0	4,512.0	
Balance Plug					6,414.0	6,678.0	
Balance Plug					2,230.0	2,330.0	
					2,096.0	2,228.0	
					1,830.0	2,330.0	
Balance Plug					16.0	926.0	
Tubing Strings							
Tubing Description	Run Date	String...	ID (in)	Wt (lb/ft)	Grade	Len (ft)	Set De...
Tubing - Production	4/29/2010	2 3/8	2.00	4.70	J-55	6,964.61	
Tubing Components							
Item Des	OD (in)	Wt (lb/ft)	Grade	Jts	Len (ft)	Btm (ftKB)	Btm (TVD) (ftKB)
Tubing Pup Joint	2 3/8	4.70	J-55	2	20.00	34.0	
Tubing	2 3/8	4.70	J-55	226	6,942.96	6,977.0	
Seating Nipple	2 3/8	5.40	J-55	1	1.20	6,978.2	
Notched collar	2 3/8		J-55	1	0.45	6,978.6	
Other In Hole							
Run Date	Des			OD (in)	Top (ftKB)	Btm (ftKB)	
Proposed Other In Hole							
Des				OD (in)	Top (ftKB)	Btm (ftKB)	
Cast Iron Bridge Plug				4	6,678.0	6,680.0	

**Well Name: LDS D17-33**

VERTICAL - Original Hole, 8/27/2018 3:03:21 PM



Proposed Other In Hole						
Des	OD (in)	Top (ftKB)	Btm (ftKB)			
Cement Retainer	4	2,228.0	2,230.0			
Logs						
Date	Type	Top, MD (ftKB)	Btm, MD (ftKB)			
12/22/2009	SPECTRAL DENSITY/Pe/DSN NEUTRON/SP/ARRAY COMPENSATED TRUE RESISTIVITY/6 ARM CALIPER	727.0	7,167.0			
12/22/2009	SPECTRAL GAMMA RAY	6,022.0	7,167.0			
12/31/2009	CBL/CCL/GR	1,480.0	7,091.0			
3/2/2017	GYRO	0.0	6,900.0			
Perforation Data						
Linked Zone	Sum of Entered Shot Total	Top (ftKB)	Btm (ftKB)	Date		
NIOBRARA, Original Hole	24	6,728.00	6,740.00	2/5/2010		
NIOBRARA, Original Hole	24	6,774.00	6,786.00	2/5/2010		
NIOBRARA, Original Hole	24	6,874.00	6,886.00	2/5/2010		
CODELL, Original Hole	52	7,001.00	7,014.00	1/19/2010		
Total (Sum)	124					
Proposed Perforations						
Linked Zone	Sum of En...	Top Depth (ftKB)	Btm (ftKB)	Date		
	0	2,330.00	2,330.00	5/7/2018		
Total (Sum)	0					
Job Supply Amounts						
Supply Item Des	Type	Uni...	Job Category	Total...	Total...	Total...