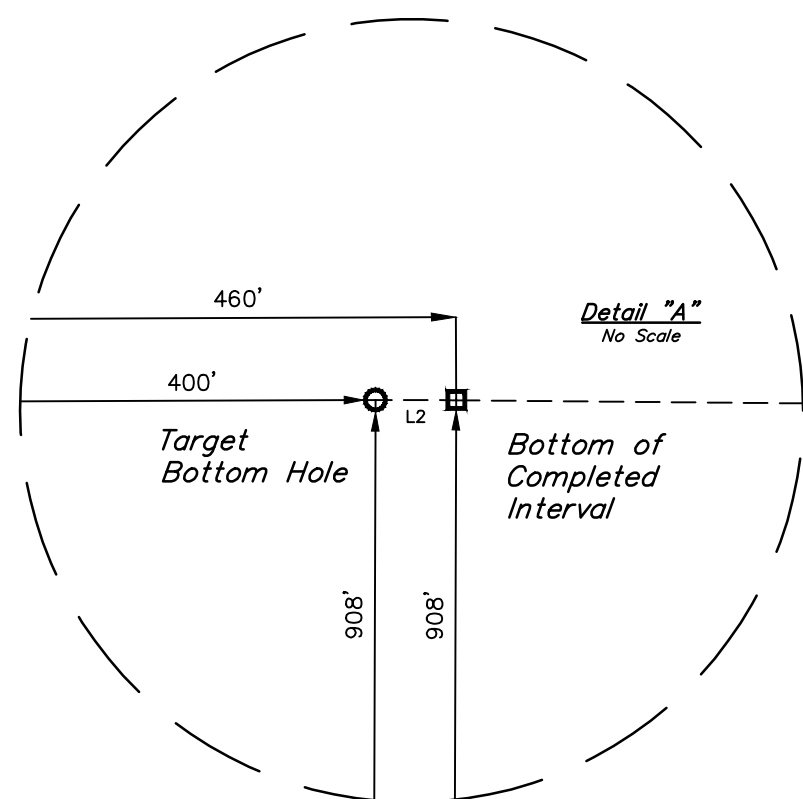
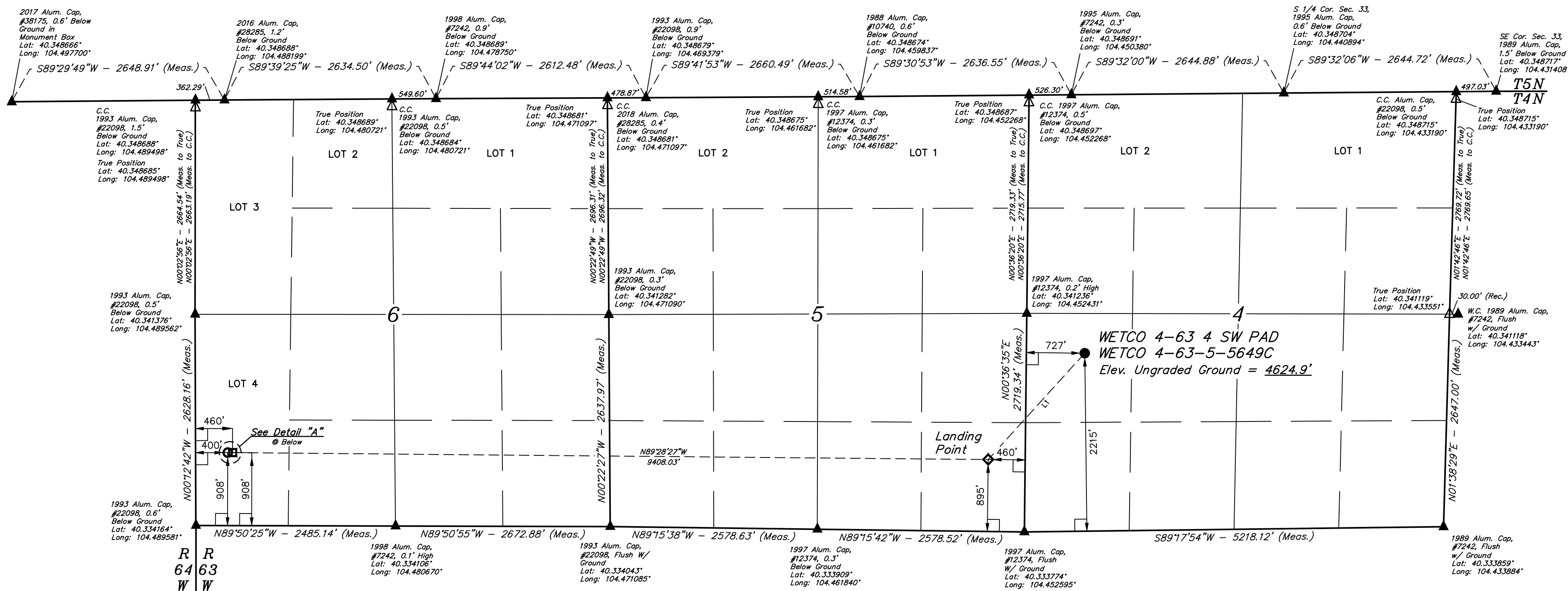
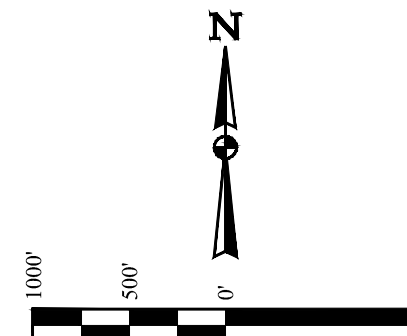


WETCO 4-63 4 SW PAD  
WETCO 4-63-5-5649C  
NW 1/4 SW 1/4, SECTION 4, T4N, R63W, 6th P.M.  
WELD COUNTY, COLORADO

BASIS OF BEARINGS  
TRANSVERSE MERCATOR PROJECTION WITH  
A CENTRAL MERIDIAN OF W105°00'00".

BASIS OF ELEVATION  
OPUS SOLUTION GENERATED NAVD 88



## LEGEND:

- = 90° SYMBOL
- = PROPOSED WELLHEAD.
- ◆ = LANDING POINT.
- = BOTTOM OF COMPLETED INTERVAL.
- = TARGET BOTTOM HOLE.
- ▲ = SECTION CORNERS LOCATED. (NAD 83)
- △ = SECTION CORNERS RE-ESTABLISHED. (Not Set on Ground.) (NAD 83)

LINE TABLE		
LINE	DIRECTION	LENGTH
L1	S42°13'56\"W	1787.00'
L2	N89°50'25\"W	60.00'

PDOP = 1.2		
NAD 83 (SURFACE LOCATION)	NAD 83 (LANDING POINT)	NAD 83 (TARGET BOTTOM HOLE)
LATITUDE = 40°20'23.51\" (40.339865°)	LATITUDE = 40°20'10.51\" (40.336254°)	LATITUDE = 40°20'11.93\" (40.336647°)
LONGITUDE = 104°26'59.47\" (104.449854°)	LONGITUDE = 104°27'15.09\" (104.454190°)	LONGITUDE = 104°29'17.30\" (104.488140°)
NAD 27 (SURFACE LOCATION)	NAD 27 (LANDING POINT)	NAD 27 (TARGET BOTTOM HOLE)
LATITUDE = 40°20'23.58\" (40.339883°)	LATITUDE = 40°20'10.58\" (40.336273°)	LATITUDE = 40°20'12.00\" (40.336666°)
LONGITUDE = 104°26'57.63\" (104.449343°)	LONGITUDE = 104°27'13.25\" (104.453680°)	LONGITUDE = 104°29'15.46\" (104.487628°)
STATE PLANE NAD 83 (CO. NORTH)	STATE PLANE NAD 83 (CO. NORTH)	STATE PLANE NAD 83 (CO. NORTH)
N: 1368386.72' E: 3292729.19'	N: 1367057.24' E: 3291535.90'	N: 1367090.46' E: 3282070.74'
STATE PLANE NAD 27 (CO. NORTH)	STATE PLANE NAD 27 (CO. NORTH)	STATE PLANE NAD 27 (CO. NORTH)
N: 368388.75' E: 2292879.26'	N: 367059.28' E: 2291685.98'	N: 367092.47' E: 2282220.81'

CERTIFICATE OF REGISTRATION  
THIS IS TO CERTIFY THAT THE ABOVE DESCRIBED SURVEY WAS MADE BY ME OR UNDER MY SUPERVISION AND THAT THE SAME ARE TRUE AND CORRECT TO THE BEST OF MY KNOWLEDGE AND BELIEF.

REGISTERED LAND SURVEYOR  
REGISTRATION NO. 28285  
STATE OF COLORADO



SURVEYED BY RYAN WILLIAMS, C.M. 07-24-18 SCALE  
DRAWN BY C.C. 07-25-18 1\" = 1000'

WELL LOCATION PLAT

REV: 01 07-30-18 J.U. (BCI ADDITION)

UELS, LLC  
Corporate Office \* 85 South 200 East  
Vernal, UT 84078 \* (435) 789-1017