

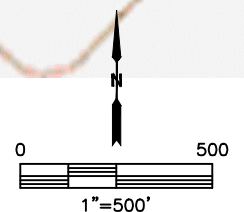
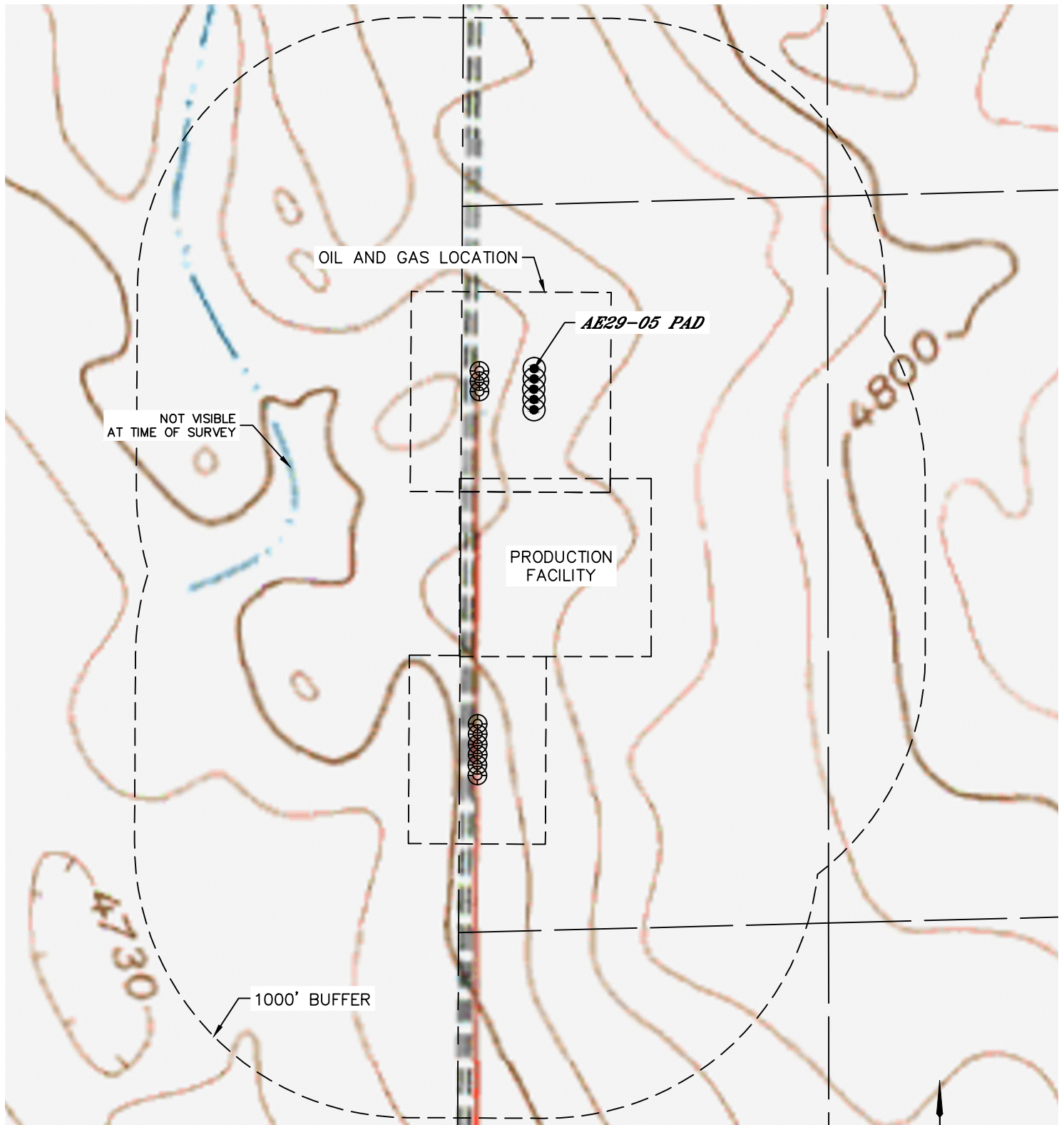


Lat40°, Inc. 6250 W. 10th Street, Unit 2, Greeley, CO 970-515-5294

# HYDROLOGY MAP

AE29-05 PAD

SECTION: 29  
TOWNSHIP: 6N  
RANGE: 62W  
6TH. P.M.  
WELD COUNTY, CO



NO VISIBLE SURFACE WATER WITHIN 1000'

DATE: 11/20/2017  
PROJECT#: 2017064