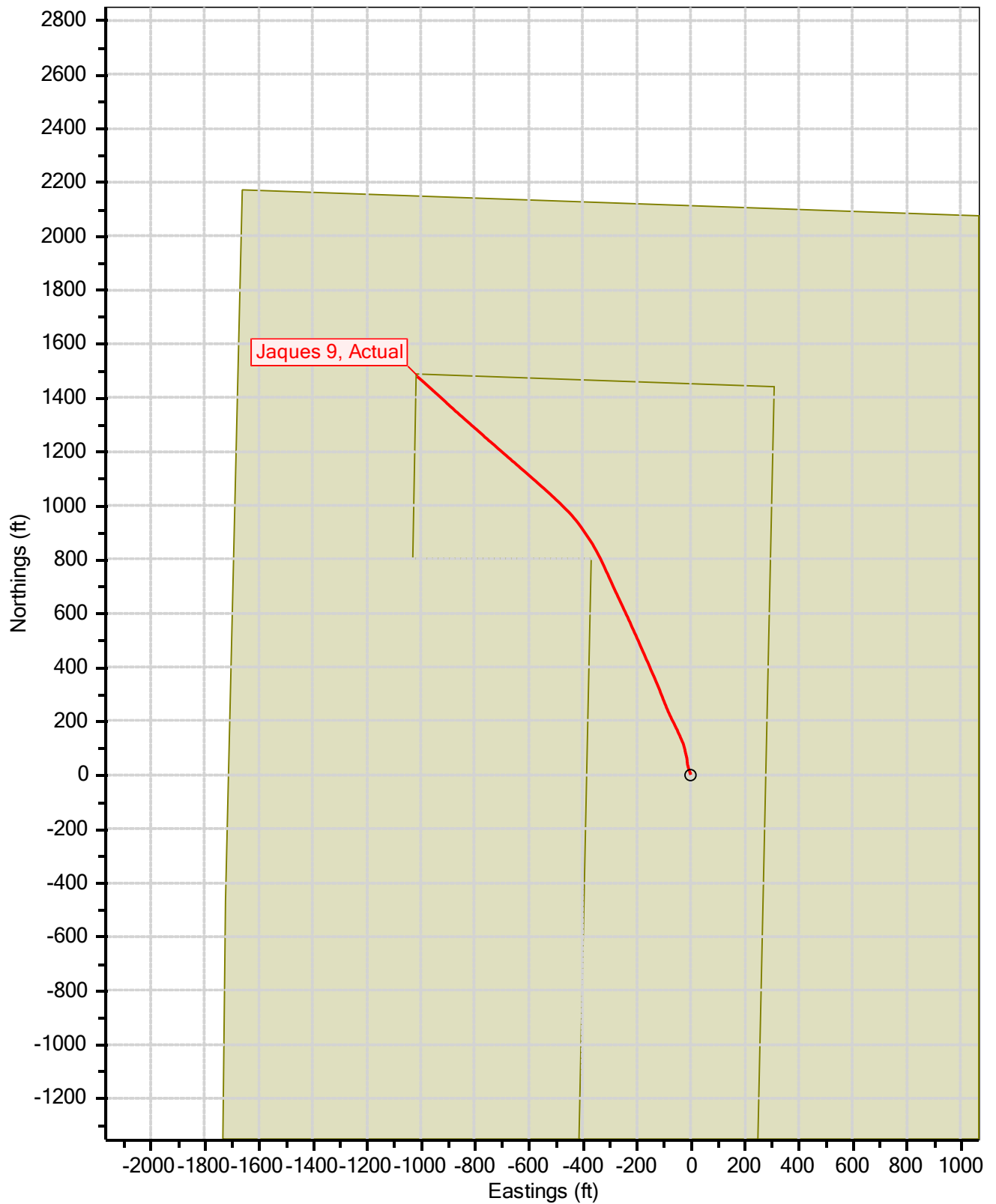


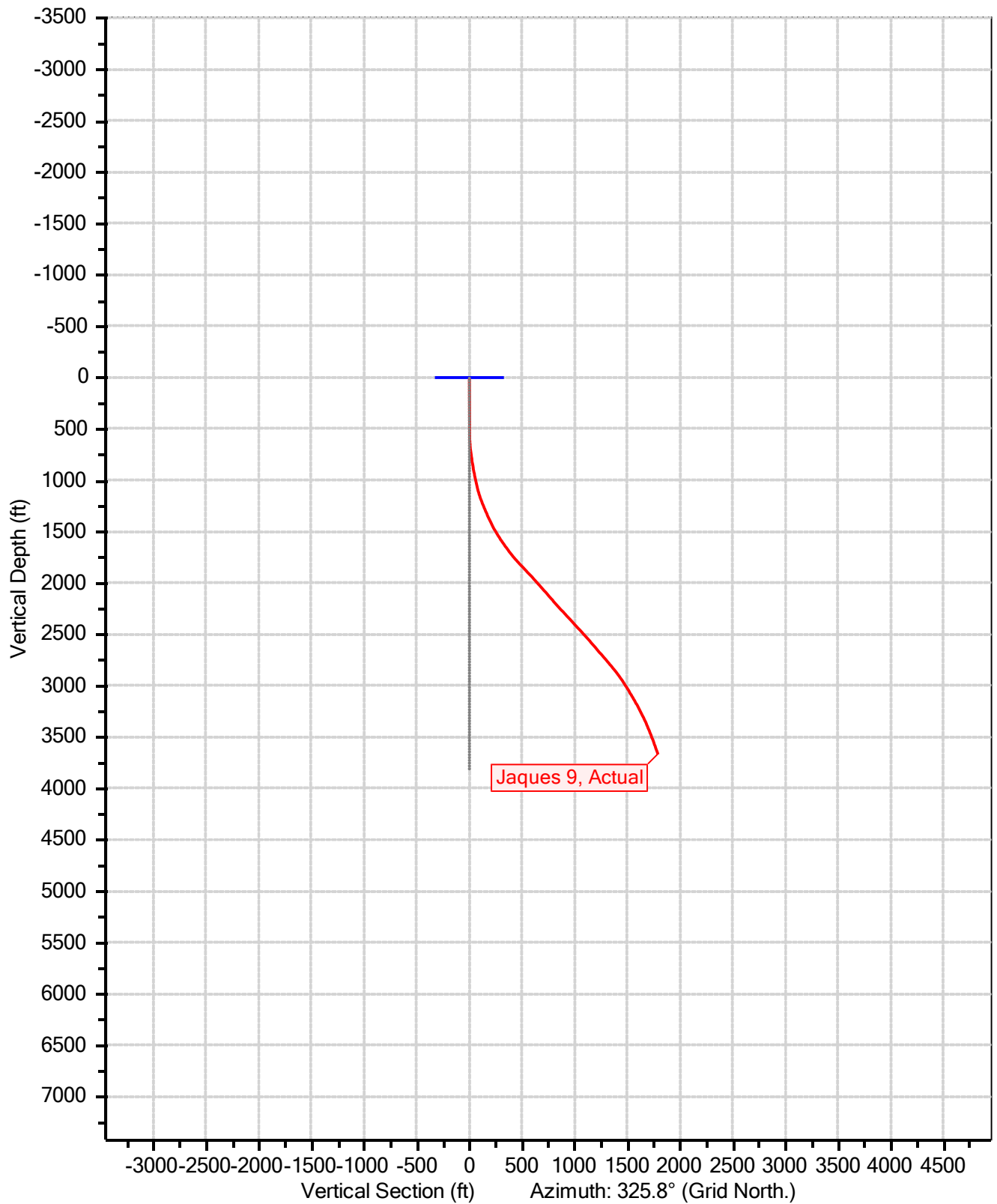
**Ignacio Blanco, Jaques Sec 27  
Fruitland Coal  
Jaques 9  
Actual  
Survey Date: Sunday, July 22, 2018**

## **Catamount Energy Partners Survey Report**

Fruitland Coal, Jaques 9



Fruitland Coal, Jaques 9



# Catamount Energy Partners

## Survey Report



<b>Database:</b>	San Juan Basin	<b>Local Coordinate Reference:</b>	Jaques 9
<b>Company:</b>		<b>TVD Reference:</b>	Jaques 9
<b>Project:</b>	Jaques Sec 27	<b>MD Reference:</b>	Jaques 9
<b>Site:</b>	Fruitland Coal	<b>North reference:</b>	Grid North
<b>Well:</b>	Jaques 9	<b>Survey Calculation Method:</b>	Minimum Curvature
<b>Wellbore:</b>			
<b>Survey:</b>	Actual		

<b>Project</b>	Jaques Sec 27		
<b>Map System:</b>	NAD83 Colorado State Planes	<b>System Datum:</b>	Mean Sea Level
<b>Geo Datum:</b>	NAD 1983		
<b>Map Zone:</b>	Southern Zone		

<b>Site</b>	Fruitland Coal		
<b>Site Position:</b>		<b>Northing:</b>	0 N
<b>From:</b>	Map	<b>Easting:</b>	0 E
<b>Position Uncertainty:</b>	0ft	<b>Slot Radius:</b>	0in
		<b>Latitude:</b>	33.48902771° N
		<b>Longitude:</b>	115.33027986° W
		<b>Grid Convergence:</b>	-6.0°

<b>Well</b>	Jaques 9		
<b>Well Position:</b>	<b>+N/-S</b>	1156837ft	<b>Northing:</b> 1156837 N
	<b>+E/-W</b>	2355918ft	<b>Easting:</b> 2355918 E
<b>Position Uncertainty:</b>		1ft	<b>Wellhead Elevation:</b> 7042ft
			<b>Latitude:</b> 37.07648569° N
			<b>Longitude:</b> 107.70786272° W
			<b>Ground Level:</b> 7031ft

Magnetics	Model Name	Sample Date	Declination (°)	Dip Angle (°)	Field Strength (nT)
	User Defined	7/19/2018	0.0	0.0	0.0

<b>Survey</b>	Actual		
<b>Audit Notes:</b>			
<b>Version:</b>		<b>Phase:</b>	<b>Tie On Depth:</b> 0ft

Vertical Section:	Depth from TVD (ft)	+N/-S (ft)	+E/-W (ft)	Direction (°)
	0	0	0	325.8

Survey Program		7/23/2018		
From (ft)	To (ft)	Survey (Wellbore)	Tool Name	Description
0	4248	Actual	MWD	MWD

Survey	Measured Depth (ft)	Incl. (°)	Az. (°)	Vertical Depth (ft)	Sub Sea Depth (ft)	+N/-S (ft)	+E/-W (ft)	Vertical Section (ft)	Closure Distance (ft)	Closure Azimuth (°)	Dogleg Rate (°/100ft)	Comments/ Formations
	0	0.0	0.0	0	-7042	0	0	0	0	0.0	0.0	MWD
	542	0.8	348.6	542	-6500	4	-1	3	4	348.6	0.1	
	574	0.7	348.8	574	-6468	4	-1	4	4	348.6	0.3	
	603	1.9	344.0	603	-6439	5	-1	4	5	348.1	4.3	
	635	3.5	342.3	635	-6407	6	-1	6	6	346.9	4.8	
	664	4.8	340.0	664	-6378	8	-2	8	8	345.4	4.7	
	694	6.0	336.6	694	-6348	11	-3	11	11	343.6	4.1	
	726	7.2	337.7	726	-6316	14	-5	14	15	342.0	3.6	
	758	7.3	338.5	757	-6285	18	-6	18	19	341.2	0.5	
	788	8.7	342.8	787	-6255	22	-7	22	23	341.1	5.0	
	819	9.8	345.8	818	-6224	27	-9	27	28	341.7	4.0	
	851	9.9	346.6	849	-6193	32	-10	32	34	342.4	0.4	
	881	9.7	347.5	879	-6163	37	-11	37	39	343.0	0.9	
	912	10.8	352.2	909	-6133	42	-12	42	44	343.9	4.5	
	942	12.4	354.1	939	-6103	48	-13	47	50	345.0	5.6	

# Catamount Energy Partners

## Survey Report



<b>Database:</b>	San Juan Basin	<b>Local Coordinate Reference:</b>	Jaques 9
<b>Company:</b>		<b>TVD Reference:</b>	Jaques 9
<b>Project:</b>	Jaques Sec 27	<b>MD Reference:</b>	Jaques 9
<b>Site:</b>	Fruitland Coal	<b>North reference:</b>	Grid North
<b>Well:</b>	Jaques 9	<b>Survey Calculation Method:</b>	Minimum Curvature
<b>Wellbore:</b>			
<b>Survey:</b>	Actual		

Survey	Measured Depth (ft)	Incl. (°)	Az. (°)	Vertical Depth (ft)	Sub Sea Depth (ft)	+N/-S (ft)	+E/-W (ft)	Vertical Section (ft)	Closure Distance (ft)	Closure Azimuth (°)	Dogleg Rate (°/100ft)	Comments/ Formations
	973	13.2	353.7	969	-6073	55	-14	53	57	346.1	2.7	
	1004	13.4	349.1	999	-6043	62	-15	60	64	346.7	3.5	
	1036	13.3	346.3	1030	-6012	69	-16	67	71	346.8	2.1	
	1068	13.9	347.6	1061	-5981	77	-18	74	79	346.8	2.1	
	1099	14.6	346.6	1091	-5951	84	-20	81	86	346.8	2.6	
	1131	16.8	346.4	1122	-5920	93	-22	89	95	346.8	6.7	
	1163	19.0	346.1	1152	-5890	102	-24	98	105	346.7	7.1	
	1194	20.5	342.5	1182	-5860	112	-27	108	115	346.5	6.2	
	1226	21.7	336.7	1212	-5830	123	-31	119	127	345.9	7.4	
	1257	22.3	336.1	1240	-5802	134	-36	131	138	345.1	2.1	
	1289	21.9	336.3	1270	-5772	145	-40	142	150	344.4	1.1	
	1320	22.3	336.4	1299	-5743	155	-45	154	162	343.8	1.1	
	1352	23.1	334.7	1328	-5714	167	-50	166	174	343.2	3.4	
	1384	23.9	333.3	1358	-5684	178	-56	179	187	342.6	3.0	
	1415	24.9	333.2	1386	-5656	189	-62	191	199	342.0	3.1	
	1447	26.1	333.5	1415	-5627	202	-68	205	213	341.4	4.0	
	1479	27.3	334.4	1443	-5599	215	-74	219	227	341.0	3.9	
	1510	28.4	335.8	1471	-5571	228	-80	233	241	340.6	4.0	
	1542	29.6	337.0	1499	-5543	242	-86	249	257	340.4	4.3	
	1574	31.7	337.8	1526	-5516	257	-93	265	273	340.2	6.5	
	1605	32.8	338.5	1552	-5490	272	-99	281	290	340.1	3.9	
	1637	33.9	339.1	1579	-5463	289	-105	298	307	340.0	3.5	
	1669	34.6	338.7	1606	-5436	306	-112	316	325	339.9	2.3	
	1700	35.4	337.8	1631	-5411	322	-118	333	343	339.8	3.2	
	1732	36.3	336.8	1657	-5385	339	-125	351	362	339.7	3.2	
	1763	36.7	336.5	1682	-5360	356	-133	369	380	339.6	1.6	
	1795	37.3	336.7	1707	-5335	374	-140	388	400	339.4	2.0	
	1826	38.1	336.7	1732	-5310	391	-148	407	418	339.3	2.3	
	1858	39.0	336.7	1757	-5285	410	-156	427	438	339.2	3.0	
	1889	41.2	336.2	1781	-5261	428	-164	446	458	339.1	7.2	
	1921	43.1	336.3	1804	-5238	448	-172	467	480	338.9	5.7	
	1952	43.7	336.3	1827	-5215	467	-181	488	501	338.8	2.1	
	1984	43.7	336.3	1850	-5192	487	-190	510	523	338.7	0.2	
	2016	43.2	336.2	1873	-5169	508	-199	532	545	338.6	1.4	
	2047	42.8	335.8	1896	-5146	527	-207	552	566	338.5	1.5	
	2079	42.6	335.5	1919	-5123	547	-216	574	588	338.4	0.8	
	2110	42.4	335.6	1942	-5100	566	-225	594	609	338.3	0.8	
	2142	42.1	335.2	1966	-5076	585	-234	616	630	338.2	1.1	
	2173	41.7	335.2	1989	-5053	604	-243	636	651	338.1	1.4	
	2205	41.4	335.1	2013	-5029	623	-252	657	672	338.0	0.9	
	2236	41.2	334.9	2036	-5006	642	-260	677	693	337.9	0.9	
	2268	41.0	335.0	2060	-4982	661	-269	698	714	337.8	0.5	
	2299	40.8	335.2	2084	-4958	679	-278	718	734	337.8	0.8	
	2331	40.7	335.2	2108	-4934	698	-286	739	755	337.7	0.4	
	2394	40.8	335.6	2156	-4886	736	-304	779	796	337.6	0.4	
	2426	40.8	335.6	2180	-4862	755	-312	800	817	337.5	0.0	
	2489	41.5	334.6	2227	-4815	792	-330	841	858	337.4	1.5	
	2521	42.2	332.3	2251	-4791	811	-339	862	880	337.3	5.2	
	2552	42.8	332.1	2274	-4768	830	-349	883	900	337.2	1.9	
	2584	42.8	330.1	2298	-4744	849	-360	904	922	337.0	4.1	

# Catamount Energy Partners

## Survey Report



<b>Database:</b>	San Juan Basin	<b>Local Coordinate Reference:</b>	Jaques 9
<b>Company:</b>		<b>TVD Reference:</b>	Jaques 9
<b>Project:</b>	Jaques Sec 27	<b>MD Reference:</b>	Jaques 9
<b>Site:</b>	Fruitland Coal	<b>North reference:</b>	Grid North
<b>Well:</b>	Jaques 9	<b>Survey Calculation Method:</b>	Minimum Curvature
<b>Wellbore:</b>			
<b>Survey:</b>	Actual		

Survey	Measured Depth (ft)	Incl. (°)	Az. (°)	Vertical Depth (ft)	Sub Sea Depth (ft)	+N/-S (ft)	+E/-W (ft)	Vertical Section (ft)	Closure Distance (ft)	Closure Azimuth (°)	Dogleg Rate (°/100ft)	Comments/ Formations
	2615	42.1	327.7	2320	-4722	867	-370	925	943	336.9	5.9	
	2710	41.7	324.0	2391	-4651	919	-406	989	1005	336.2	2.6	
	2742	41.8	322.5	2415	-4627	936	-419	1010	1026	335.9	3.3	
	2773	42.2	320.1	2438	-4604	953	-432	1031	1046	335.6	5.2	
	2805	42.7	317.4	2462	-4580	969	-446	1052	1067	335.3	6.0	
	2837	42.6	315.4	2485	-4557	985	-461	1073	1087	334.9	4.2	
	2868	42.2	314.3	2508	-4534	999	-476	1094	1107	334.5	2.6	
	2900	41.6	313.3	2532	-4510	1014	-491	1115	1127	334.2	3.1	
	2932	40.9	313.8	2556	-4486	1029	-506	1135	1146	333.8	2.4	
	2963	40.3	313.5	2580	-4462	1043	-521	1155	1165	333.4	1.9	
	2995	41.0	311.8	2604	-4438	1057	-536	1175	1185	333.1	3.9	
	3026	40.8	310.8	2627	-4415	1070	-552	1195	1204	332.7	2.2	
	3058	40.4	311.0	2652	-4390	1084	-567	1215	1223	332.4	1.4	
	3089	41.4	311.3	2675	-4367	1097	-583	1235	1242	332.0	3.5	
	3120	41.6	311.9	2698	-4344	1111	-598	1255	1261	331.7	1.3	
	3152	41.4	311.2	2722	-4320	1125	-614	1275	1281	331.4	1.6	
	3184	41.1	311.4	2746	-4296	1139	-630	1296	1301	331.1	1.1	
	3215	40.6	310.7	2770	-4272	1152	-645	1315	1320	330.8	2.2	
	3247	40.0	310.7	2794	-4248	1165	-661	1335	1340	330.5	1.8	
	3278	39.6	310.9	2818	-4224	1178	-676	1354	1358	330.2	1.4	
	3310	39.4	311.2	2843	-4199	1192	-691	1374	1378	329.9	1.1	
	3342	38.5	310.6	2868	-4174	1205	-706	1394	1397	329.6	2.9	
	3373	37.1	311.5	2892	-4150	1217	-721	1412	1415	329.4	4.9	
	3405	35.7	310.7	2918	-4124	1230	-735	1430	1433	329.1	4.9	
	3436	34.4	312.0	2943	-4099	1242	-748	1448	1450	328.9	4.7	
	3468	33.1	311.0	2970	-4072	1253	-761	1465	1467	328.7	4.5	
	3499	32.5	312.1	2996	-4046	1265	-774	1481	1483	328.5	2.7	
	3531	31.9	310.7	3023	-4019	1276	-787	1497	1499	328.3	2.9	
	3562	31.4	311.6	3049	-3993	1286	-799	1513	1514	328.2	2.2	
	3594	31.1	311.9	3077	-3965	1298	-811	1529	1530	328.0	1.0	
	3625	30.8	311.5	3103	-3939	1308	-823	1545	1546	327.8	1.2	
	3657	30.4	310.9	3131	-3911	1319	-836	1561	1561	327.6	1.5	
	3689	29.6	311.8	3159	-3883	1329	-848	1576	1577	327.5	2.9	
	3720	29.3	311.4	3186	-3856	1340	-859	1591	1591	327.3	1.3	
	3751	28.7	312.2	3213	-3829	1350	-870	1605	1606	327.2	2.3	
	3783	27.7	311.3	3241	-3801	1360	-881	1620	1620	327.0	3.4	
	3814	26.5	313.3	3269	-3773	1369	-892	1634	1634	326.9	4.7	
	3846	25.9	312.9	3297	-3745	1379	-902	1648	1648	326.8	2.0	
	3878	25.2	313.5	3326	-3716	1388	-912	1661	1661	326.7	2.4	
	3909	24.4	311.6	3354	-3688	1397	-922	1674	1674	326.6	3.7	
	3941	23.7	312.0	3383	-3659	1406	-932	1686	1686	326.5	2.3	
	3972	22.7	312.0	3412	-3630	1414	-941	1698	1698	326.4	2.9	
	4004	22.0	312.9	3442	-3600	1422	-950	1710	1710	326.3	2.7	
	4036	21.2	312.3	3471	-3571	1430	-958	1721	1721	326.2	2.4	
	4067	20.8	312.1	3500	-3542	1437	-967	1732	1732	326.1	1.4	
	4099	20.6	311.9	3530	-3512	1445	-975	1743	1743	326.0	0.7	
	4130	20.5	310.9	3559	-3483	1452	-983	1754	1754	325.9	1.2	
	4162	20.1	311.9	3589	-3453	1460	-991	1764	1764	325.8	1.7	
	4193	19.5	310.8	3618	-3424	1467	-999	1775	1775	325.7	2.2	
	4248	19.5	310.8	3670	-3372	1479	-1013	1792	1792	325.6	0.0	

# Catamount Energy Partners

## Survey Report



<b>Database:</b>	San Juan Basin	<b>Local Coordinate Reference:</b>	Jaques 9
<b>Company:</b>		<b>TVD Reference:</b>	Jaques 9
<b>Project:</b>	Jaques Sec 27	<b>MD Reference:</b>	Jaques 9
<b>Site:</b>	Fruitland Coal	<b>North reference:</b>	Grid North
<b>Well:</b>	Jaques 9	<b>Survey Calculation Method:</b>	Minimum Curvature
<b>Wellbore:</b>			
<b>Survey:</b>	Actual		

Checked By:	Approved By:	Date:
-------------	--------------	-------

### Disclaimer Notice

Catamount Energy Partners makes no warranty of any kind with respect to the subject matter included herein or the completeness or accuracy of this document.

Catamount Energy Partners are not responsible for any actions (or lack thereof) taken as a result of relying on or in any way using information contained in this document and in no event shall be liable for any damages resulting from reliance on or use of this information.