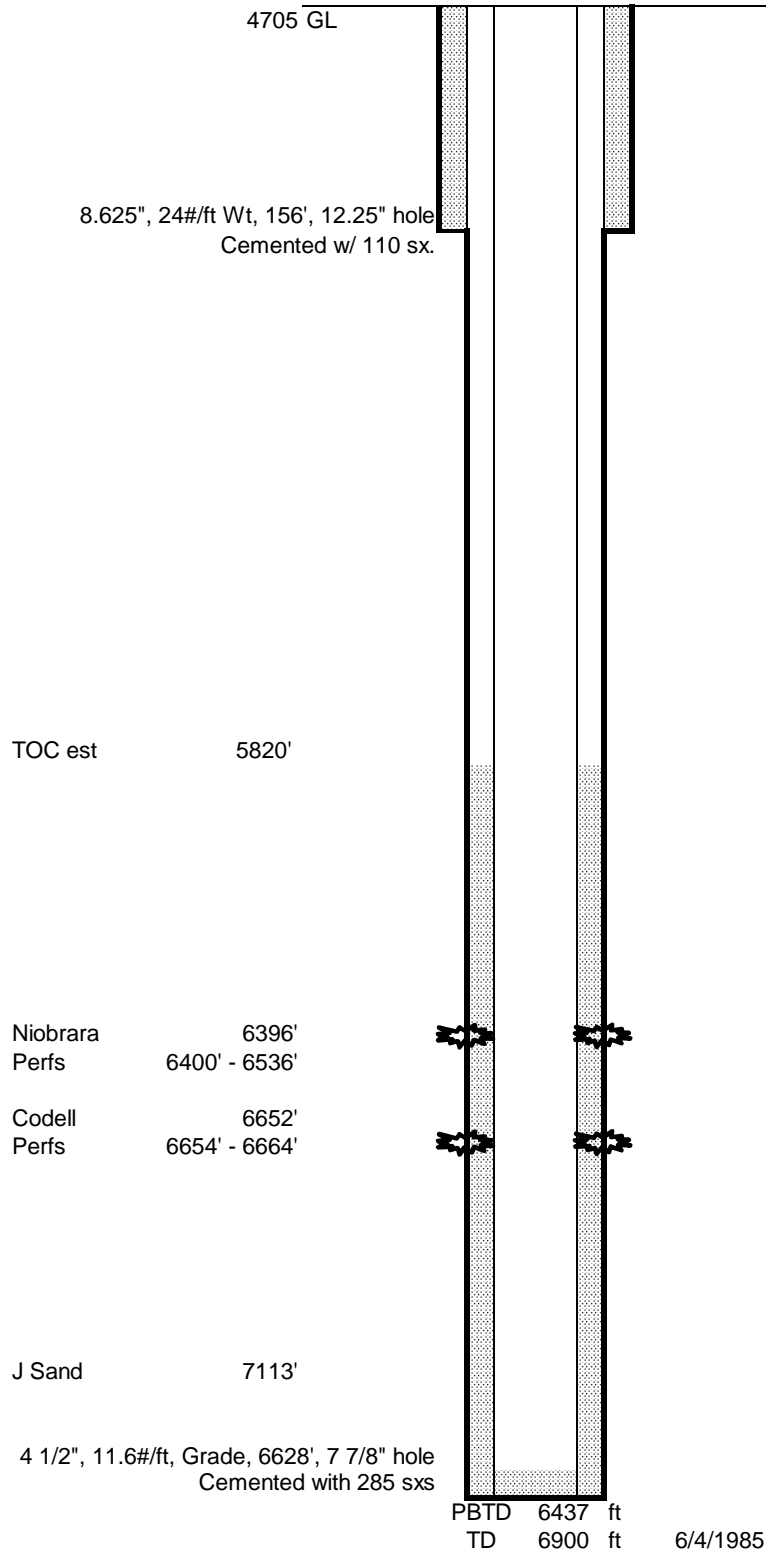


Champlin 1
Current WBD

660' FSL660' FEL SESE 9 4N 63W 6th PM
Lat 40.32122 Long -104.43614
Weld County, Colorado
API #05-123-10877

Spud date 11/1/1982

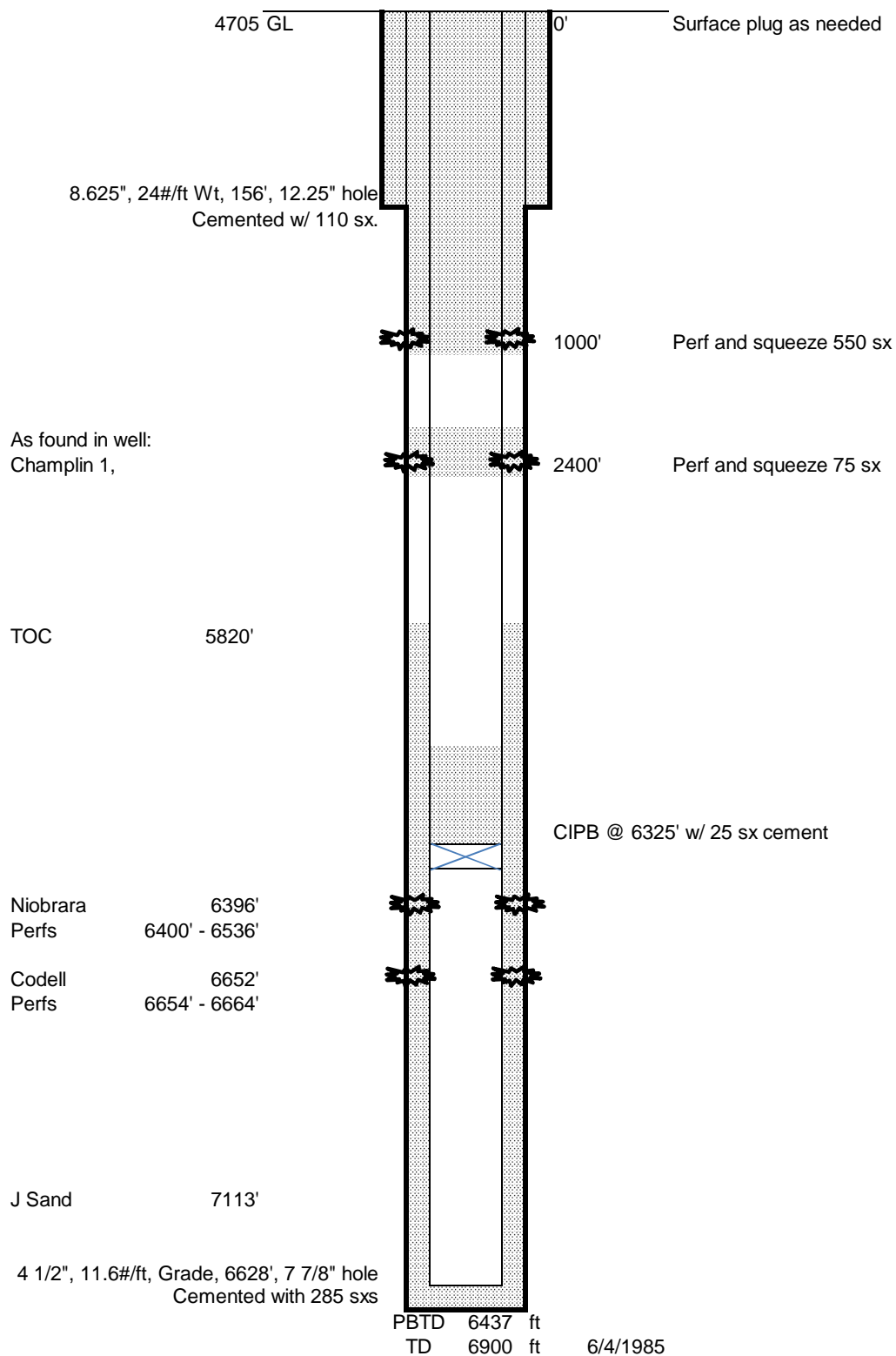


Updated 8/13/2018 rcs

Champlin 1 Proposed WBD

660' FSL660' FEL SESE 9 4N 63W 6th PM
Lat 40.32122 Long -104.43614
Weld County, Colorado
API #05-123-10877

Spud date 11/1/1982



Updated 8/13/2018 rcs