

HALLIBURTON

iCem[®] Service

TERRA ENERGY PARTNERS-EBUS

Date: Saturday, May 19, 2018

PA 331-26

API# 05-045-23717-00

Terra PA 331-26 Surface

Job Date: Monday, May 14, 2018

Sincerely,

Grand Junction Cement Engineering

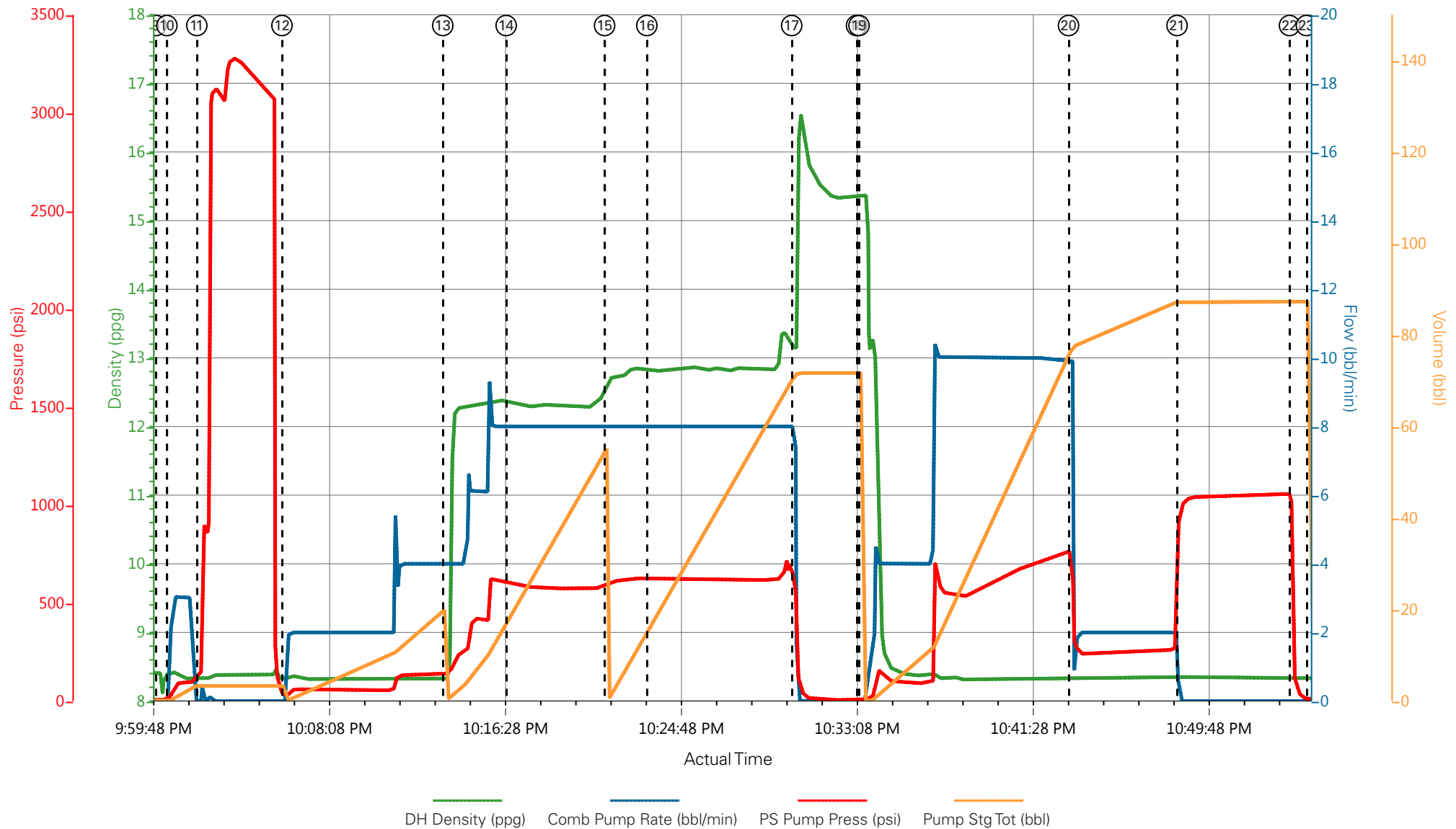
1.0 Real-Time Job Summary

1.1 Job Event Log

Type	Seq. No.	Graph Label	Date	Time	Source	DH Density (ppg)	Comb Pump Rate (bbl/min)	PS Pump Press (psi)	Pump Stg Tot (bbl)	Comments
Event	1	Call Out	5/14/2018	12:30:00	USER					REQUESTED ON LOCATION @ 18:30
Event	2	Pre-Convoy Safety Meeting	5/14/2018	13:45:00	USER					ALL HES PRESENT
Event	3	Crew Leave Yard	5/14/2018	14:00:00	USER					1 HT 400 PUMP TRUCK E8, 1 660 BULK TRUCKS, 1 450 SERVICE PICKUP
Event	4	Arrive At Loc	5/14/2018	17:00:00	USER					ARRIVED 1 HOUR EARLY. RIG GETTING READY TO START RUNNING CASING
Event	5	Assessment Of Location Safety Meeting	5/14/2018	17:15:00	USER					MET WITH COMP REP, AND WENT OVER NUMBERS AND JOB PROCEDURE. WALKED AROUND LOCATION AND COLLECTED WATER SAMPLE (PH- 7.0, CHLORIDES- 500, TEMP- 65F). COMP REP WAS OFFERED SDS FOR ALL CHEMICLES USED BY HES.
Event	6	Pre-Rig Up Safety Meeting	5/14/2018	17:20:00	USER					ALL HES PRESENT
Event	7	Rig-Up Equipment	5/14/2018	17:30:00	USER					HES RIGGED UP EQUIPMENT WITHOUT ENTERING RED ZONE.
Event	8	Pre-Job Safety Meeting	5/14/2018	21:45:00	USER					ALL HES EMPLOYEES AND RIG CREW PRESENT, RIG CIRCULATED @ 11 BPM PRIOR TO JOB, PRESSURE @130 PSI
Event	9	Start Job	5/14/2018	22:00:04	COM6					TD 1134', TP 1127' OF 9 5/8" 36# SURFACE CSG, FC @ 1085', OH 13.5", MUD 9.5 PPG
Event	10	Prime Lines	5/14/2018	22:00:35	USER	8.33	2	98	3	8.33 PPG FRESH WATER

Event	11	Test Lines	5/14/2018	22:02:00	COM6			3280		ALL LINES HELD PRESSURE AT 3280 PSI
Event	12	Pump H2O Spacer	5/14/2018	22:06:02	COM6	8.33	4	150	20	8.33 PPG FRESH WATER
Event	13	Pump Lead Cement	5/14/2018	22:13:39	COM6	12.3	8	630	53	125 SKS VARICEM CMT 12.3 PPG, 2.38 FT3/SK, 13.77 GAL/SK
Event	14	Check Weight	5/14/2018	22:16:40	USER					WEIGHT VERIFIED VIA PRESSUREIZED MUD SCALES
Event	15	Pump Tail Cement	5/14/2018	22:21:19	COM6	12.8	8	620	65.8	175 SKS VARICEM CMT 12.8 PPG, 2.11 FT3/SK, 11.78 GAL/SK
Event	16	Check weight	5/14/2018	22:23:19	COM6					WEIGHT VERIFIED VIA PRESSUREIZED MUD SCALES
Event	17	Shutdown	5/14/2018	22:30:11	USER					END OF CEMENT, WASH UP ON TOP OF PLUG
Event	18	Drop Top Plug	5/14/2018	22:33:15	COM6					VERIFIED BY FLAG INDICATOR
Event	19	Pump Displacement	5/14/2018	22:33:22	COM6	8.33	10	740	83.9	FRESH WATER
Event	20	Slow Rate	5/14/2018	22:43:18	USER	8.33	2	250	73.9	SLOW RATE TO 2 BPM TO BUMP PLUG
Event	21	Bump Plug	5/14/2018	22:48:26	COM6	8.33	2	265	83.9	LAND PLUG AT 265 PSI, BROUGHT UP TO 1040 PSI
Event	22	Check Floats	5/14/2018	22:53:46	USER					FLOATS HELD, .5 BBL BACK TO TRUCK
Event	23	End Job	5/14/2018	22:54:34	COM6					RETURNS THROUGHOUT JOB, 15 BBLS CMT TO SURFACE, 40# OF SUGAR USED.
Event	24	Post-Job Safety Meeting (Pre Rig-Down)	5/14/2018	23:00:00	USER					ALL HES PRESENT
Event	25	Rig-Down Equipment	5/14/2018	23:10:00	USER					ALL HES PRESENT
Event	26	Pre-Convoy Safety Meeting	5/14/2018	23:45:00	USER					ALL HES PRESENT
Event	27	Crew Leave Location	5/15/2018	00:00:00	USER					THANK YOU FOR CHOOSING HALLIBURTON CEMENT, SHAWN BLOSSOM AND CREW

TERRA PA 331-26, 9 5/8" SURFACE



- | | | | | |
|---|--------------------------|--------------------|---|------------------------------|
| ① Call Out | ⑦ Rig-Up Equipment | ⑬ Pump Lead Cement | ⑲ Pump Displacement | 25 Rig-Down Equipment |
| ② Pre-Convoy Safety Meeting | ⑧ Pre-Job Safety Meeting | ⑭ Check Weight | 20 Slow Rate | 26 Pre-Convoy Safety Meeting |
| ③ Crew Leave Yard | ⑨ Start Job | ⑮ Pump Tail Cement | 21 Bump Plug | 27 Crew Leave Location |
| ④ Arrive At Loc | ⑩ Prime Lines | ⑯ Check weight | 22 Check Floats | |
| ⑤ Assessment Of Location Safety Meeting | ⑪ Test Lines | ⑰ Shutdown | 23 End Job | |
| ⑥ Pre-Rig Up Safety Meeting | ⑫ Pump H2O Spacer | ⑱ Drop Top Plug | 24 Post-Job Safety Meeting (Pre Rig-Down) | |

▼ HALLIBURTON | iCem® Service

Created: 2018-05-14 12:50:14, Version: 4.2.393

Edit

Customer: TERRA ENERGY PARTNERS-EBUS

Job Date: 5/14/2018

Well: PA 331-26

Representative: JOSH PHILLIPS

Sales Order #: 904839300

ELITE 8: PAUL SALAZAR/ SHAWN BLOSSOM

TERRA PA 331-26, 9 5/8" SURFACE

