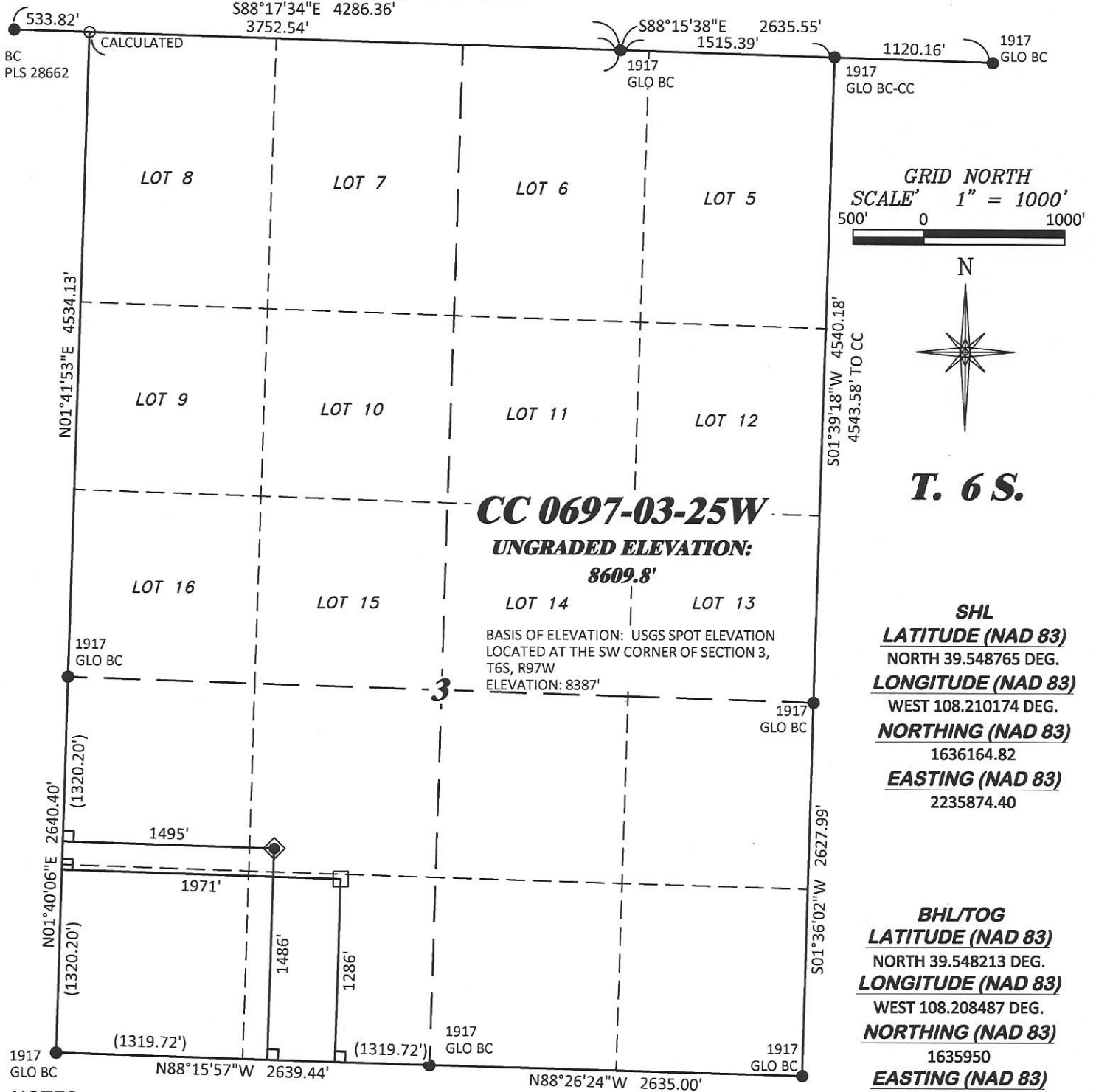


R. 97 W.



NOTES

- GPS OPERATOR T. SHERRILL OBSERVED A PDOP OF 1.2.
- ALL GPS OBSERVATIONS ARE IN COMPLIANCE WITH COGCC RULE No.215.
- EXISTING IMPROVEMENTS WITHIN 500' OF LOCATION. SEE EXHIBIT 2D.
- SURROUNDING SURFACE USE IS NATIVE BRUSH, NON CROP RANGELAND.

BASIS OF BEARING/DATUM

SPCS COLORADO CENTRAL NAD 27 BASED ON GPS OBSERVATIONS AND OPUS SOLUTION ON DRG CONTROL POINT "WILLIAMS" HAVING A POSITION OF:
NAD83(2011)
LAT 39° 31' 35.18" NORTH
LONG 108° 12' 16.79" WEST
NAVD88 ELEVATION: 8618.14'

THE SOUTH LINE OF THE SW¼ OF SECTION 3, MONUMENTED BY GLO BC'S AND BEARING N 88°15'57" W.

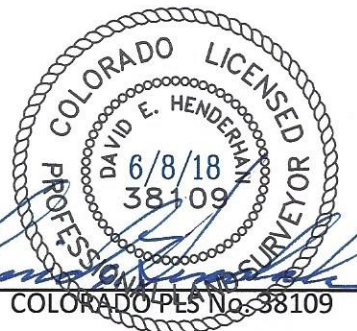
SURVEYOR'S STATEMENT

I, DAVID E. HENDERHAN, AN EMPLOYEE AND AGENT ON BEHALF OF D.R. GRIFFIN & ASSOCIATES, INC. STATE THE PLAT HEREON IS A CORRECT REPRESENTATION OF A SURVEY MADE UNDER MY SUPERVISION ON THE 25th DAY OF MAY, 2018 OF THE SHOWN CC 0697-03-25W AND THAT THE LOCATION HAS BEEN STAKED ON THE GROUND.

Notice: In accordance with Colorado State Law, any legal action based upon any defect in this survey plat must commence within three (3) years after first discovery of such defect. In no event, may any action based upon any defect in this survey plat be commenced more than ten (10) years from the date of certification shown hereon.

LEGEND

- WELL LOCATION
- APPROX. BHL
- 90° TIE
- FOUND MONUMENT
- CALCULATED CORNER



CC 603-23-32 PAD

DRG RIFFIN & ASSOCIATES, INC.

(307) 362-5028 1414 ELK ST., ROCK SPRINGS, WY 82901

DRAWN: 6/21/2017 - TCM

SCALE: 1" = 1000'

REVISED: 5/29/2018 - TCM

DRG JOB No. 21294

REVISE PAD

B7 03-25W

PLAT OF DRILLING LOCATION IN
NESW, SECTION 3, FOR
LARAMIE ENERGY, LLC.

1486' F/SL, & 1495' F/WL, SECTION 3,
T. 6 S., R. 97 W., 6TH P.M.,
GARFIELD COUNTY, COLORADO